





Legend

Study area

Heytesbury alignment

Heytesbury alternative alignment

Habitat Zones

Lowland Forest (HZ4)

Damp Heath Scrub (HZ5)

Sedgy Riparian Woodland (HZ6)

Sedgy Riparian Woodland (HZ7)

Sedgy Riparian Woodland (HZ8)

Swamp Scrub (HZ9)

Tree data

Large old tree in a patch

Small scattered tree

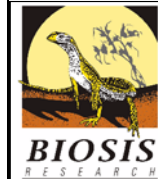
Significant flora

Amphibromus sinuatus

Hibbertia truncata

Planted vegetation

Watercourse



Biosis Research Pty. Ltd.
38 Bertie Street
(PO Box 489)
Port Melbourne
VICTORIA 3207

Offices also in:
Sydney, Ballarat, Wollongong,
Canberra, & Wangaratta

Figure 4h: Ecological Vegetation Classes and Habitat Zones, Heytesbury site, Newfield, Victoria

Date: 12 January 2011

Checked by: NMG

Drawn by: EJS

File number: 12242

Location: P:\12200s\12242\Mapping\12242 Figure 4 update.wor

Scale:

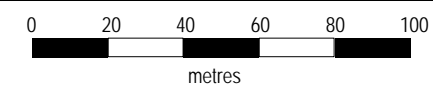


Figure 4h: Ecological Vegetation Classes and Habitat Zones, Heytesbury site, Newfield, Victoria

MGA94
Zone 54





Legend

- Study area
- Heytesbury alignment
- Heytesbury alternative alignment

Habitat Zones

- Lowland Forest (HZ4)
- Damp Heath Scrub (HZ5)
- Sedgy Riparian Woodland (HZ6)
- Sedgy Riparian Woodland (HZ7)
- Sedgy Riparian Woodland (HZ8)
- Swamp Scrub (HZ9)

Tree data

- Large old tree in a patch
- Small scattered tree

Significant flora

- Amphibromus sinuatus
- Hibbertia truncata

- Planted vegetation

- Watercourse

Figure 4i: Ecological Vegetation Classes and Habitat Zones, Heytesbury site, Newfield, Victoria

Date: 12 January 2011

Checked by: NMG

Drawn by: EJS

File number: 12242

Location: P:\12200s\12242\Mapping\12242 Figure 4 update.wor

Scale:

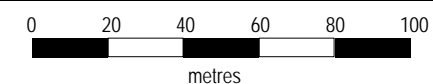


Figure 4i: Ecological Vegetation Classes and Habitat Zones, Heytesbury site, Newfield, Victoria

MGA94
Zone 54

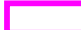


Biosis Research Pty. Ltd.
38 Bertie Street
(PO Box 489)
Port Melbourne
VICTORIA 3207


Offices also in:
Sydney, Ballarat, Wollongong,
Canberra, & Wangaratta



Legend

 Study area

 Heytesbury alignment

 Heytesbury alternative alignment


Habitat Zones

 Lowland Forest (HZ4)

 Damp Heath Scrub (HZ5)

 Sedgy Riparian Woodland (HZ6)


 Sedgy Riparian Woodland (HZ7)

 Sedgy Riparian Woodland (HZ8)

 Swamp Scrub (HZ9)

Tree data


 Large old tree in a patch


 Small scattered tree

Significant flora

 *Amphibromus sinuatus*

 *Hibbertia truncata*

 Planted vegetation

 Watercourse



Legend

Study area

Heytesbury alignment

Heytesbury alternative alignment

Habitat Zones

Lowland Forest (HZ4)

Damp Heath Scrub (HZ5)

Sedgy Riparian Woodland (HZ6)

Sedgy Riparian Woodland (HZ7)

Sedgy Riparian Woodland (HZ8)

Swamp Scrub (HZ9)

Tree data

Large old tree in a patch

Small scattered tree

Significant flora

Amphibromus sinuatus

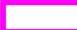
Hibbertia truncata


Planted vegetation


Watercourse




Legend


 Study area


 Heytesbury alignment


 Heytesbury alternative alignment


Habitat Zones


 Lowland Forest (HZ4)

 Damp Heath Scrub (HZ5)


 Sedgy Riparian Woodland (HZ6)


 Sedgy Riparian Woodland (HZ7)

 Sedgy Riparian Woodland (HZ8)


 Swamp Scrub (HZ9)


Tree data


 Large old tree in a patch


 Small scattered tree

Significant flora

 *Amphibromus sinuatus*

 *Hibbertia truncata*

 Planted vegetation

 Watercourse



Legend

Study area

Heytesbury alignment

Heytesbury alternative alignment

Habitat Zones

Lowland Forest (HZ4)

Damp Heath Scrub (HZ5)

Sedgy Riparian Woodland (HZ6)

Sedgy Riparian Woodland (HZ7)

Sedgy Riparian Woodland (HZ8)

Swamp Scrub (HZ9)

Tree data

Large old tree in a patch

Small scattered tree

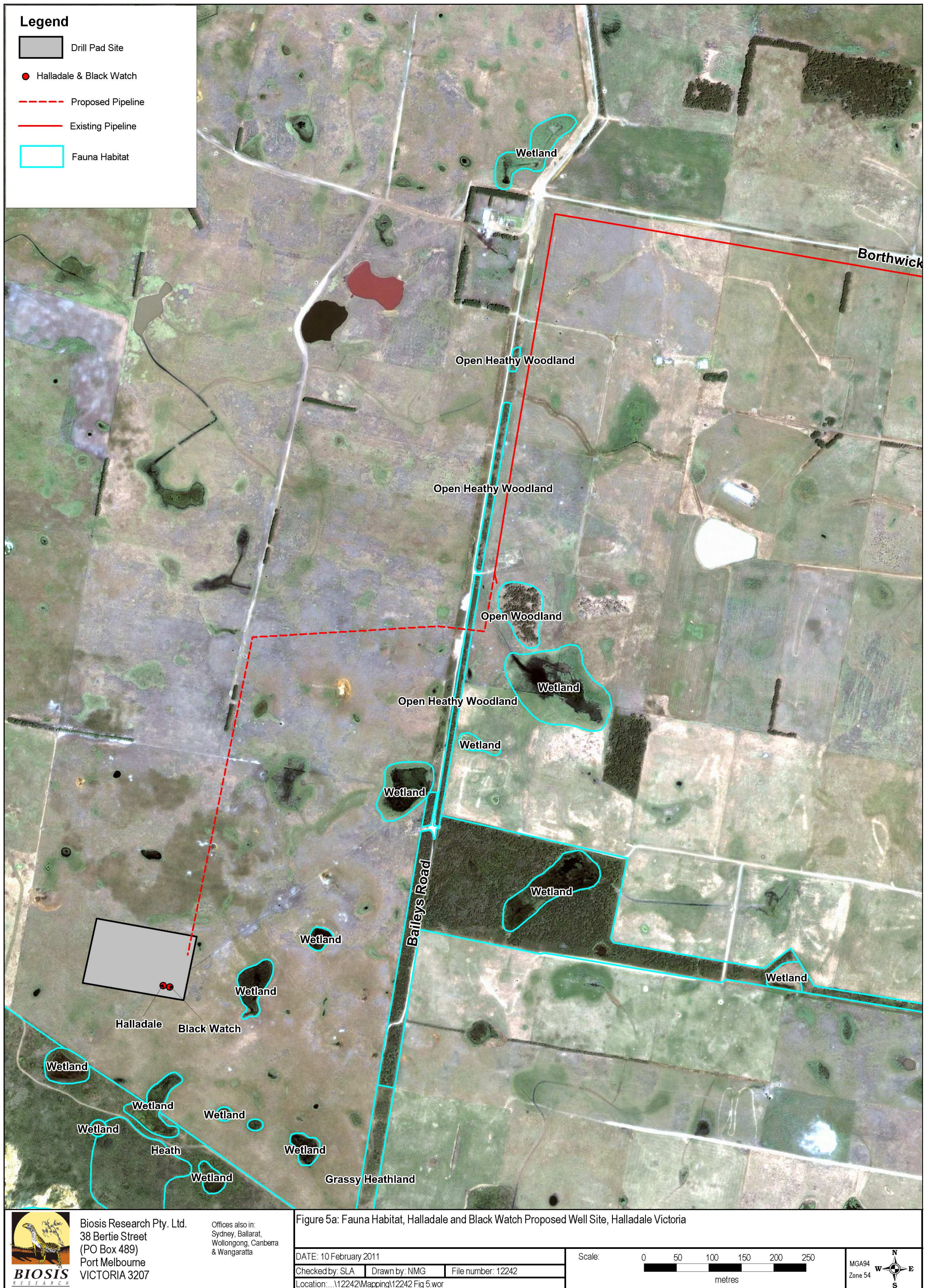
Significant flora

Amphibromus sinuatus

Hibbertia truncata

Planted vegetation

Watercourse







- Legend**
- Study area
 - Heytesbury alignment
 - Heytesbury alternative alignment
 - Fauna habitat

Figure 6a: Fauna habitat, Heytesbury site, Newfield, Victoria

Figure 6a: Fauna habitat, Heytesbury site, Newfield, Victoria

Date: 16 December 2010

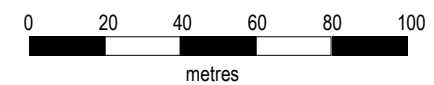
Checked by: NMG

Drawn by: PJY

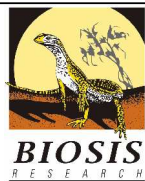
File number: 12242

Location: P:\12200s\12242\Mapping\12242 Figure 6.wor

Scale:



MGA94
Zone 54



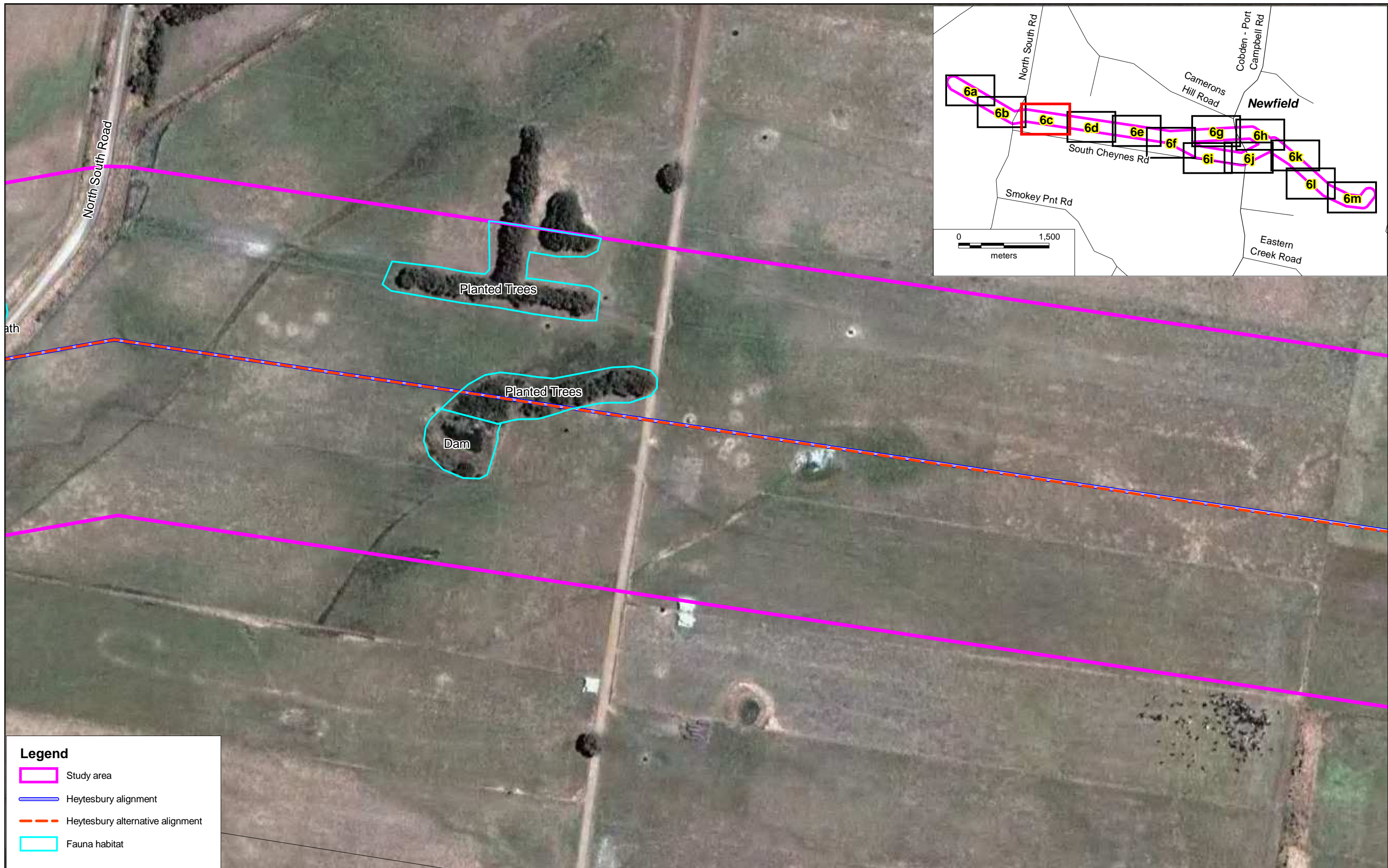
Biosis Research Pty. Ltd.
38 Bertie Street
(PO Box 489)
Port Melbourne
VICTORIA 3207

Offices also in:
Sydney, Ballarat, Wollongong,
Canberra, & Wangaratta



Legend

- Study area
- Heytesbury alignment
- Heytesbury alternative alignment
- Fauna habitat



Legend

- Study area
- Heytesbury alignment
- Heytesbury alternative alignment
- Fauna habitat



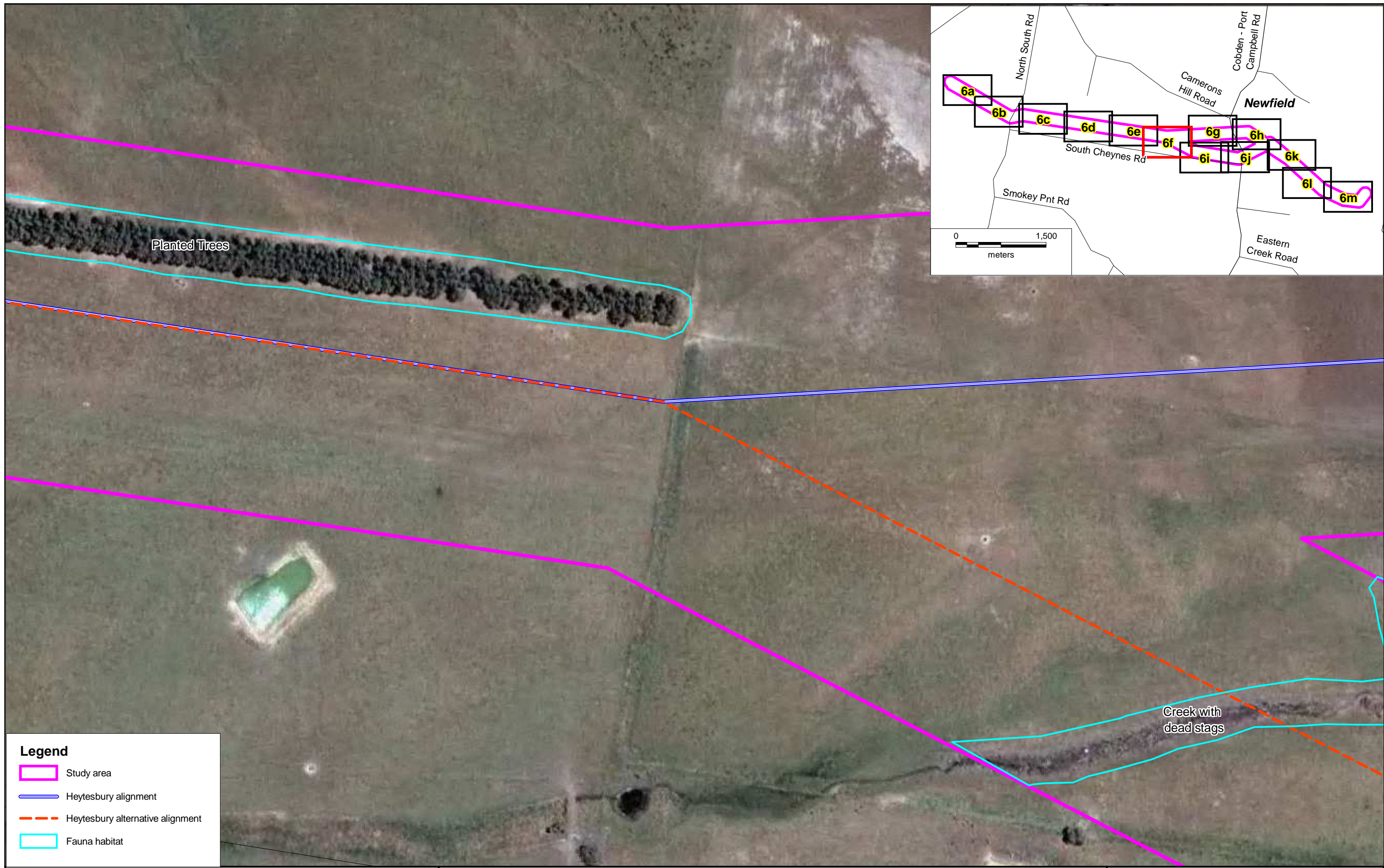
Legend

- Study area
- Heytesbury alignment
- Heytesbury alternative alignment
- Fauna habitat



Legend

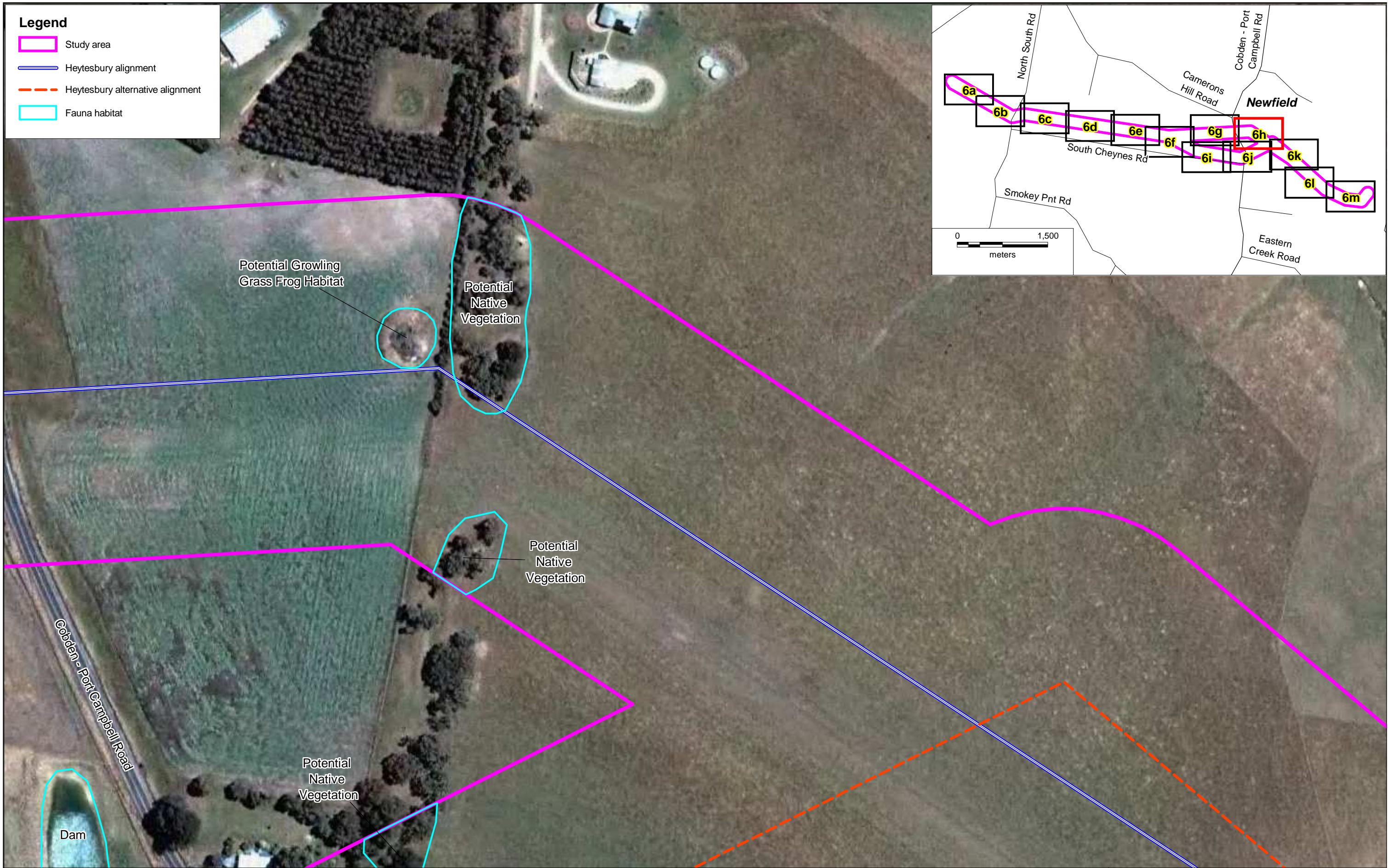
- Study area
- Heytesbury alignment
- Heytesbury alternative alignment
- Fauna habitat

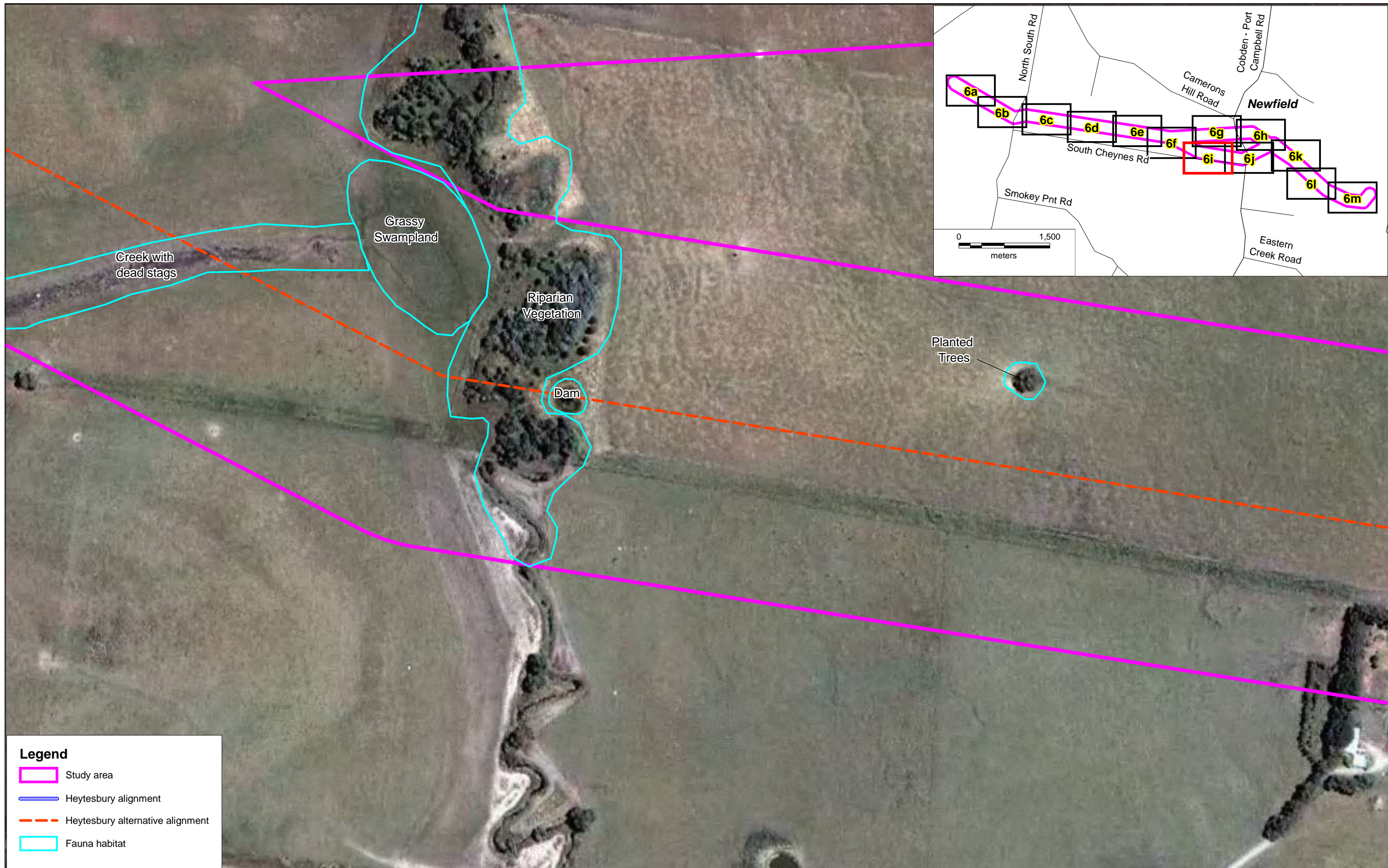


Legend

- Study area
- Heytesbury alignment
- Heytesbury alternative alignment
- Fauna habitat

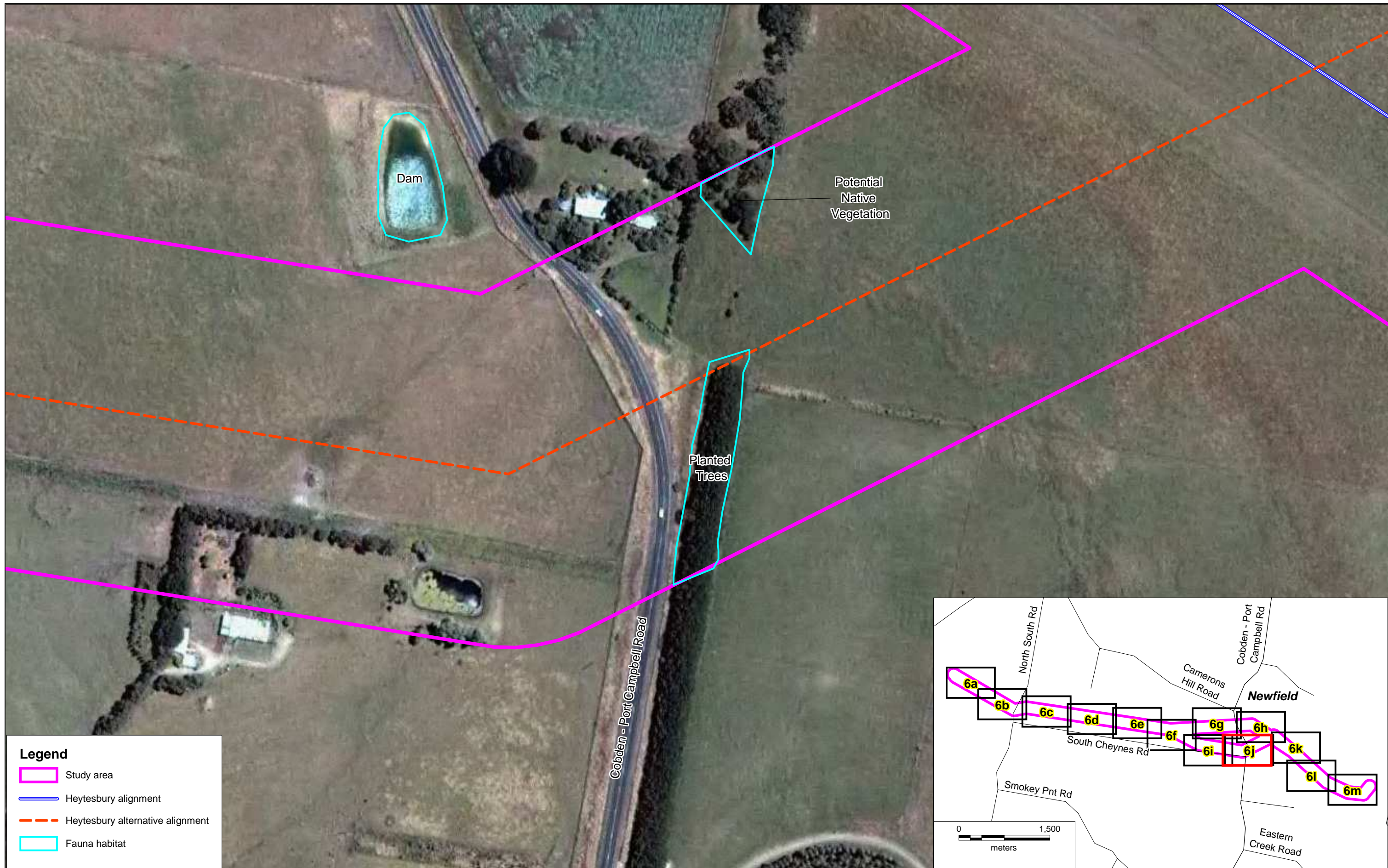






Legend

- Study area
- Heytesbury alignment
- Heytesbury alternative alignment
- Fauna habitat







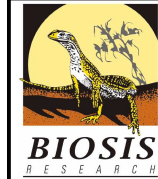
Legend

- Study area
- Heytesbury alignment
- Heytesbury alternative alignment
- Fauna habitat



Legend

-  Study area
-  Heytesbury alignment
-  Heytesbury alternative alignment
-  Fauna habitat



Biosis Research Pty. Ltd.
38 Bertie Street
(PO Box 489)
Port Melbourne
VICTORIA 3207

Offices also in:
Sydney, Ballarat, Wollongong,
Canberra, & Wangaratta

Figure 6k: Fauna habitat, Heytesbury site, Newfield, Victoria

Date: 16 December 2010

Checked by: NMG

Drawn by: PJY

File number: 12242

Location: P:\12200s\12242\Mapping\12242 Figure 6.wor

Scale:

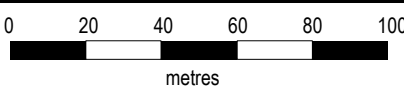


Figure 6k: Fauna habitat, Heytesbury site, Newfield, Victoria

MGA94
Zone 54





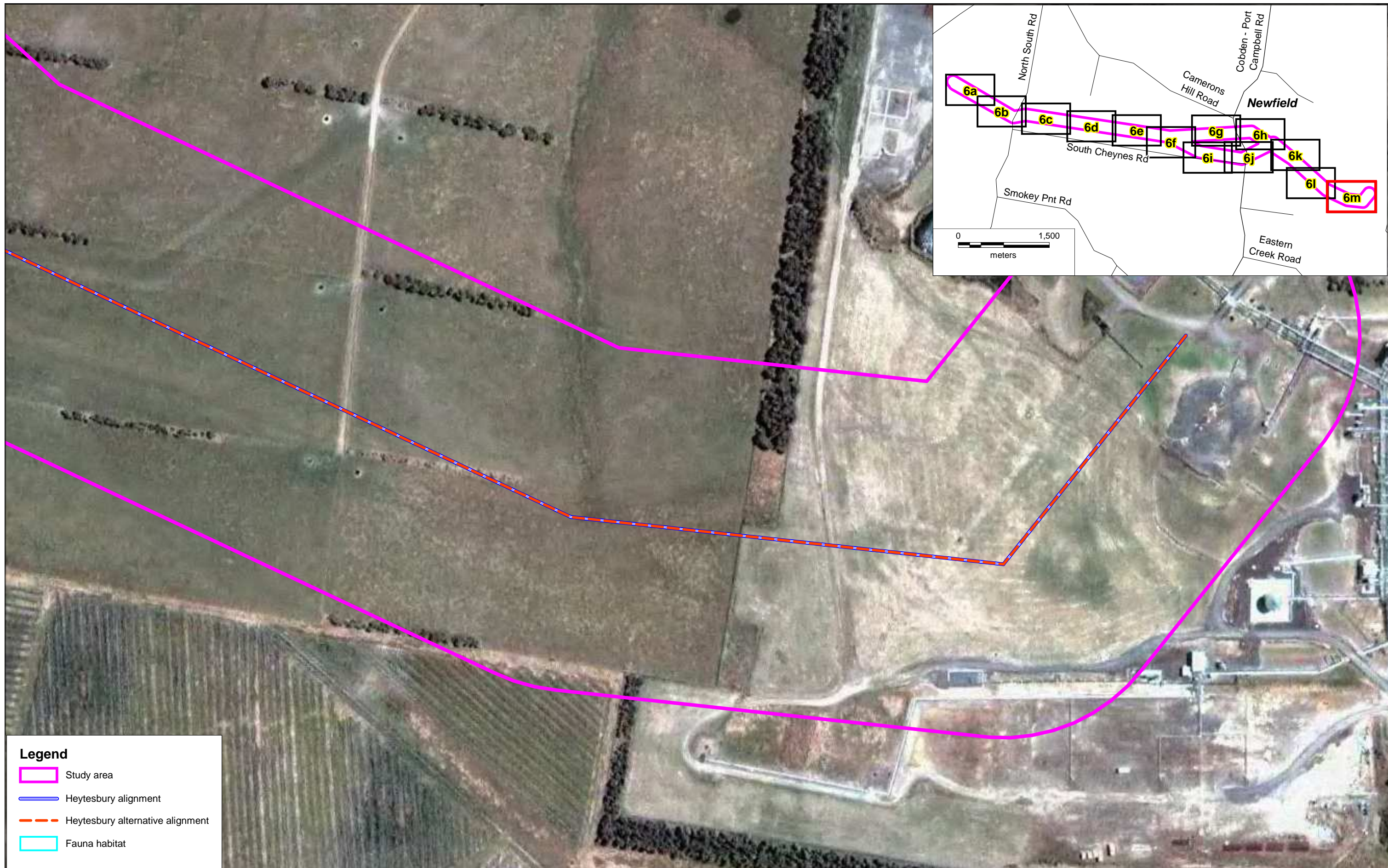
Legend

Study area

Heytesbury alignment

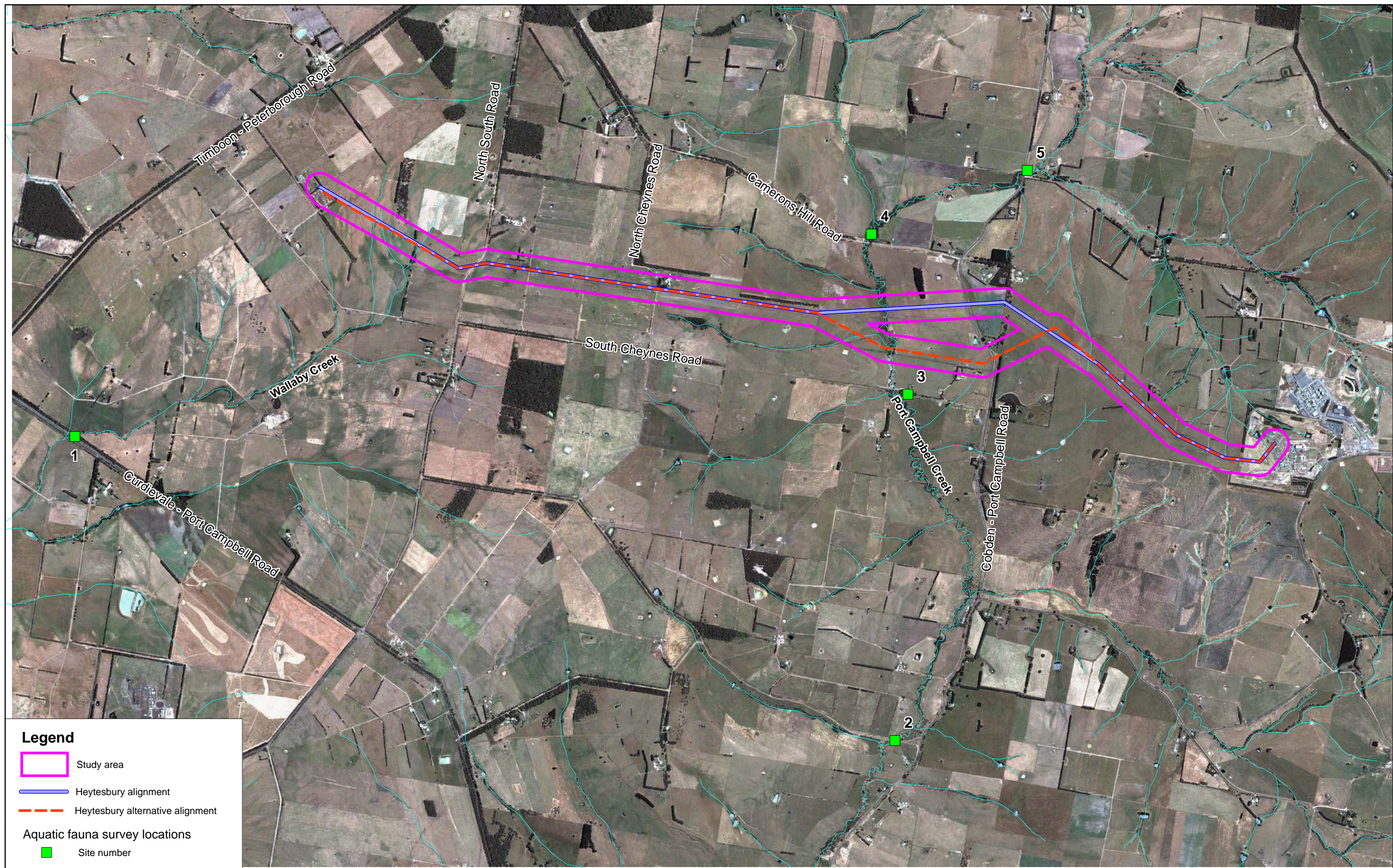
Heytesbury alternative alignment

Fauna habitat



Legend

- Study area
- Heytesbury alignment
- Heytesbury alternative alignment
- Fauna habitat



Legend

- Study area
- Heytesbury alignment
- Heytesbury alternative alignment
- Aquatic fauna survey locations**
- Site number

Figure 7: Aquatic survey locations, Heytesbury site, Newfield, Victoria

DATE: 12 January 2011

Checked by: DJM

Location: P:\12200s\12242\Mapping\12242 Figure 7.wor

Drawn by: EJS

File number: 12242

Scale:

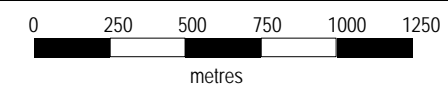
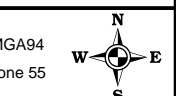


Figure 7: Aquatic survey locations, Heytesbury site, Newfield, Victoria



Biosis Research Pty. Ltd.
38 Bertie Street
(PO Box 489)
Port Melbourne
VICTORIA 3207

Offices also in:
Sydney, Ballarat, Wollongong,
Canberra, & Wangaratta

MGA94
Zone 55