

**Legend**

Proposed MEG Pipeline

- Current alignment
- Field assessed 2014
- Alignment 100m buffer

Scattered trees

- Eucalyptus ovata*
- Eucalyptus viminalis*
- Tree retention zone
- Aquatic assessment
- Proposed Burrowing Crayfish buffer

Construction Impact

- Temp construction ROW
- AWS area

Figure 2.18: Ecological features of the study area

0 25 50 75 100 125

Metres

Scale: 1:2,500 @ A3

Coordinate System: GDA 1994 MGA Zone 54

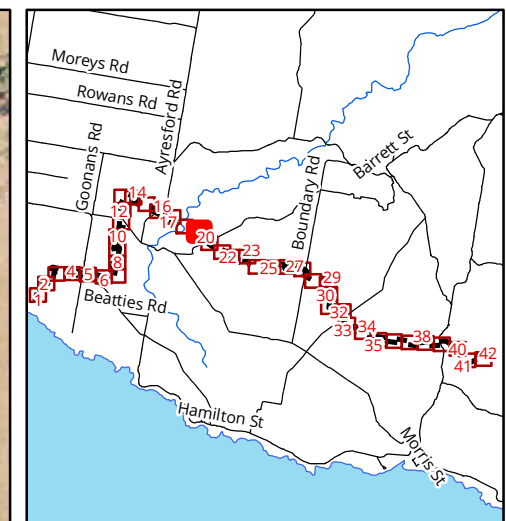
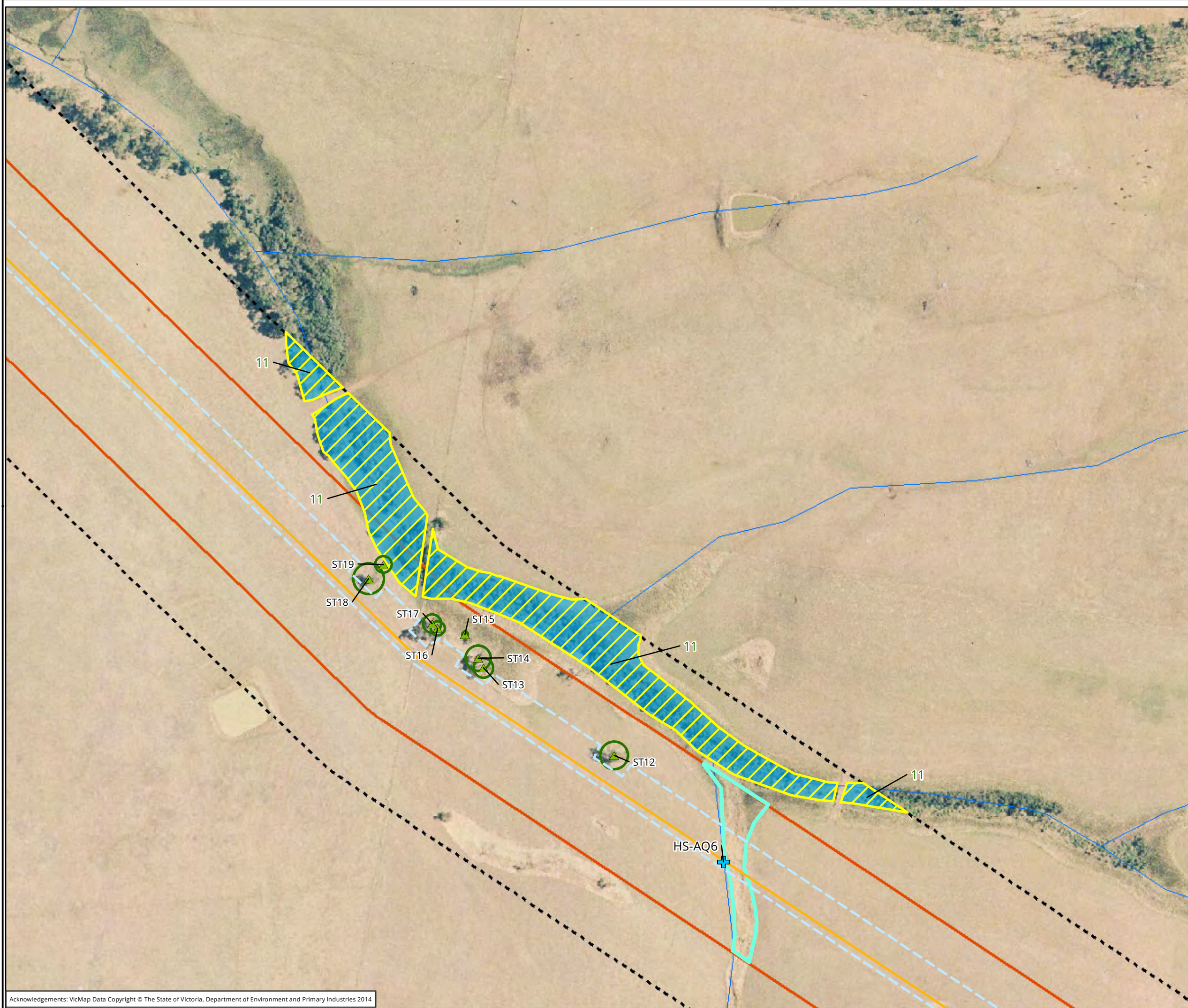
**biosis**

Biosis Pty Ltd

Ballarat, Brisbane, Canberra, Melbourne, Sydney, Wangaratta & Wollongong

Matter: 17973,  
Date: 29 September 2014,  
Checked by: RDS, Drawn by: JMS, Last edited by: jshepherd  
Location: P:\17900s\17973\Mapping\17973\_F2\_EcoFeatures





- Legend**
- Proposed MEG Pipeline
- Current alignment
  - Field assessed 2014
  - Alignment 100m buffer
- Scattered trees
- ▲ *Eucalyptus ovata*
  - Tree retention zone
- Ecological Vegetation Class
- Swamp Scrub
- Aquatic assessment
- +
- Potential fauna habitat (EPBC)
- Southern Brown Bandicoot
- Proposed
- Burrowing Crayfish buffer
- Construction Impact
- Temp construction ROW

Figure 2.19: Ecological features of the study area

0 25 50 75 100 125

Metres

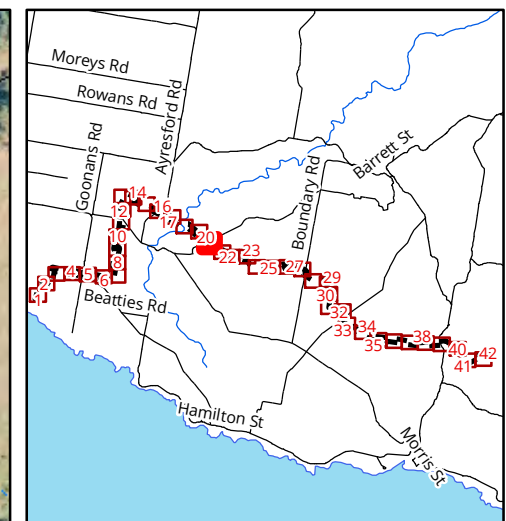
Scale: 1:2,500 @ A3  
Coordinate System: GDA 1994 MGA Zone 54



Ballarat, Brisbane, Canberra, Melbourne,  
Sydney, Wangaratta & Wollongong

Matter: 17973,  
Date: 29 September 2014,  
Checked by: RDS, Drawn by: JMS, Last edited by: jshepherd  
Location: P:\17900s\17973\Mapping\17973\_F2\_EcoFeatures





- Legend**
- Proposed MEG Pipeline
    - Current alignment
    - Field assessed 2014
    - Alignment 100m buffer
  - Ecological Vegetation Class
    - Damp Heathy Woodland
    - Planted Natives
  - Potential fauna habitat (EPBC)
    - Southern Brown Bandicoot and Long-nosed Potoroo
  - Construction Impact
    - Temp construction ROW
    - AWS area

Figure 2.20: Ecological features of the study area

0 25 50 75 100 125

Metres

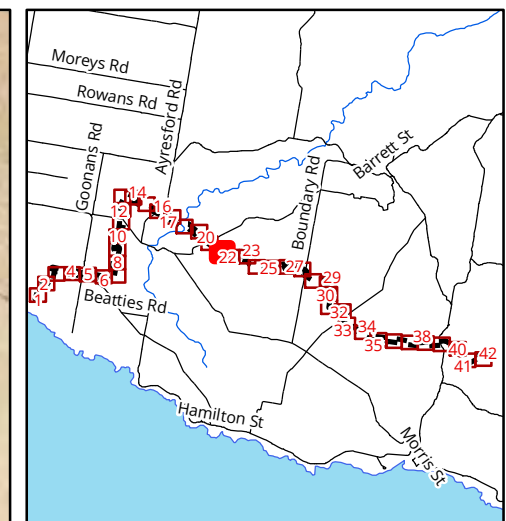
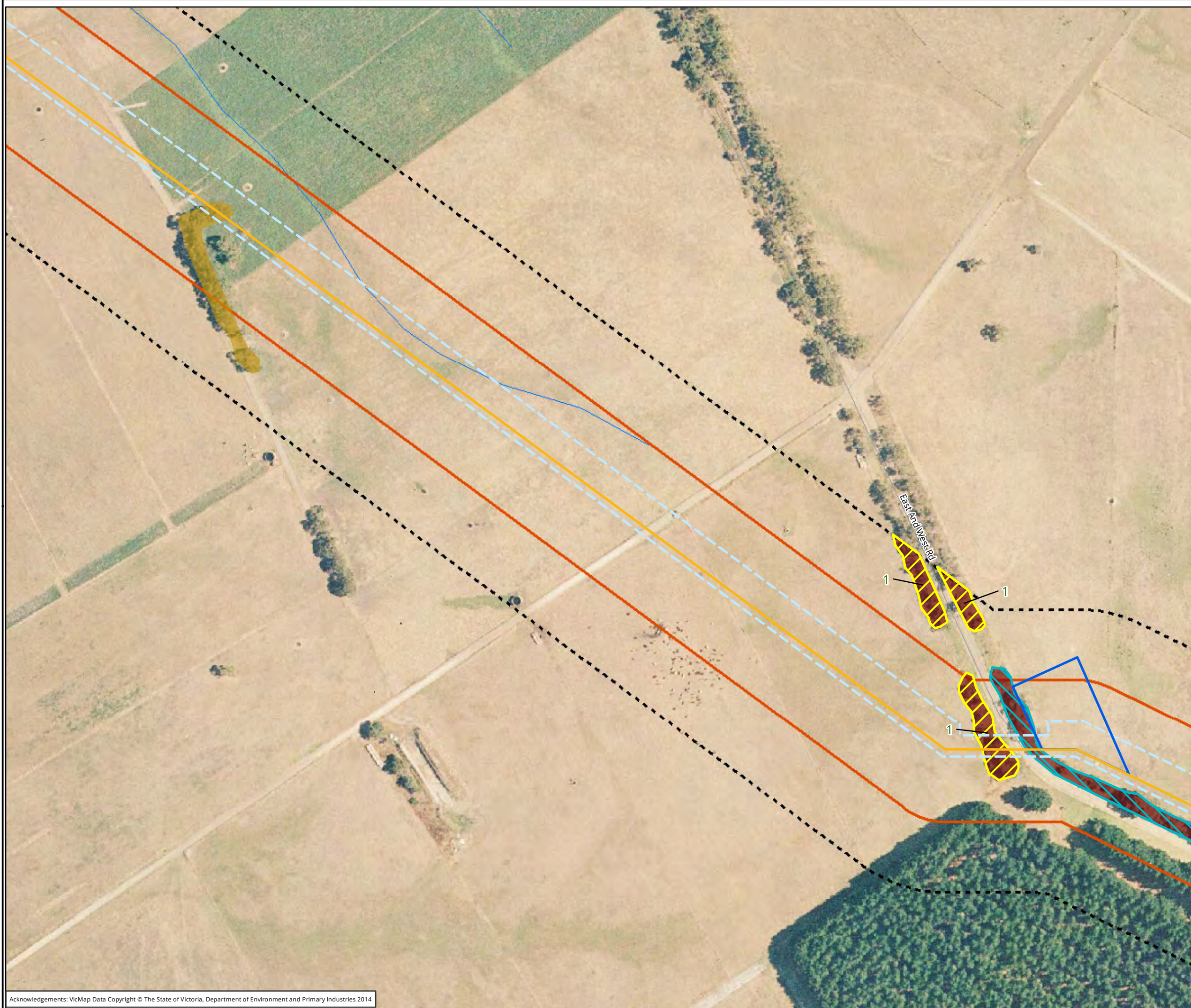
Scale: 1:2,500 @ A3  
Coordinate System: GDA 1994 MGA Zone 54



Ballarat, Brisbane, Canberra, Melbourne,  
Sydney, Wangaratta & Wollongong

Matter: 17973,  
Date: 29 September 2014,  
Checked by: RDS, Drawn by: JMS, Last edited by: jshepherd  
Location: P:\17900s\17973\Mapping\17973\_F2\_EcoFeatures





### Legend

Proposed MEG Pipeline

— Current alignment

▭ Field assessed 2014

--- Alignment 100m buffer

Ecological Vegetation Class

■ Damp Heathy Woodland

■ Planted Natives

Potential fauna habitat (EPBC)

▨ Southern Brown Bandicoot

▨ Southern Brown Bandicoot  
and Long-nosed Potoroo

Construction Impact

--- Temp construction ROW

▭ AWS area

Figure 2.21: Ecological features of the study area

0 25 50 75 100 125

Metres

Scale: 1:2,500 @ A3

Coordinate System: GDA 1994 MGA Zone 54



Ballarat, Brisbane, Canberra, Melbourne,  
Sydney, Wangaratta & Wollongong

Matter: 17973,  
Date: 29 September 2014,  
Checked by: RDS, Drawn by: JMS, Last edited by: jshepherd  
Location: P:\17900s\17973\Mapping\17973\_F2\_EcoFeatures



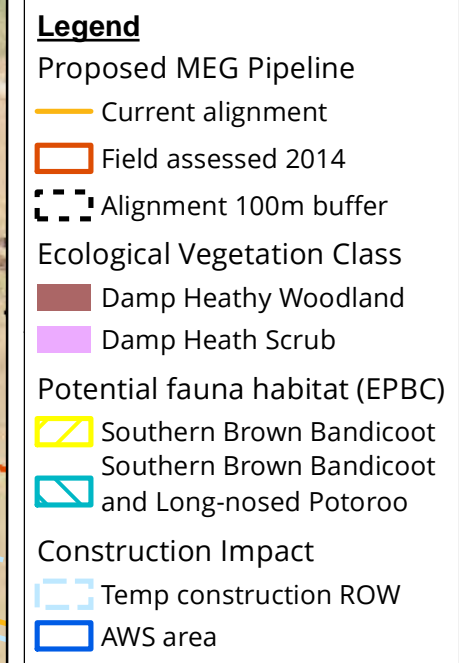
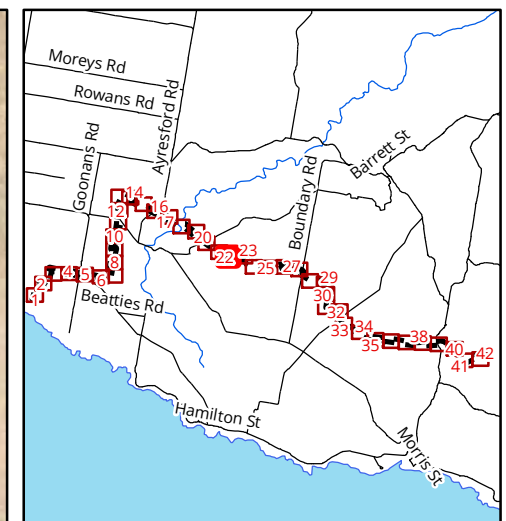
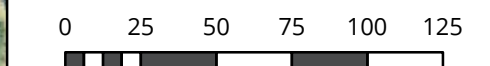


Figure 2.22: Ecological features of the study area

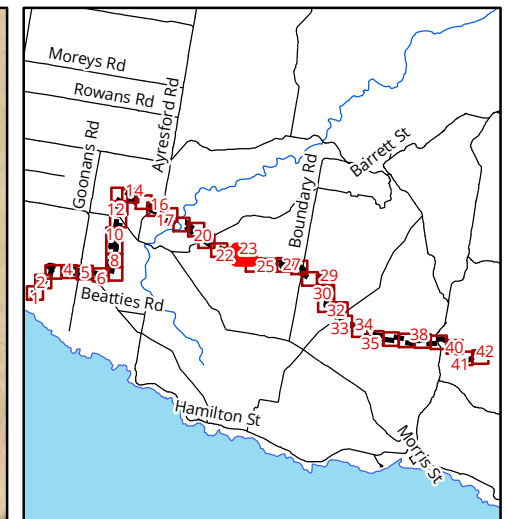
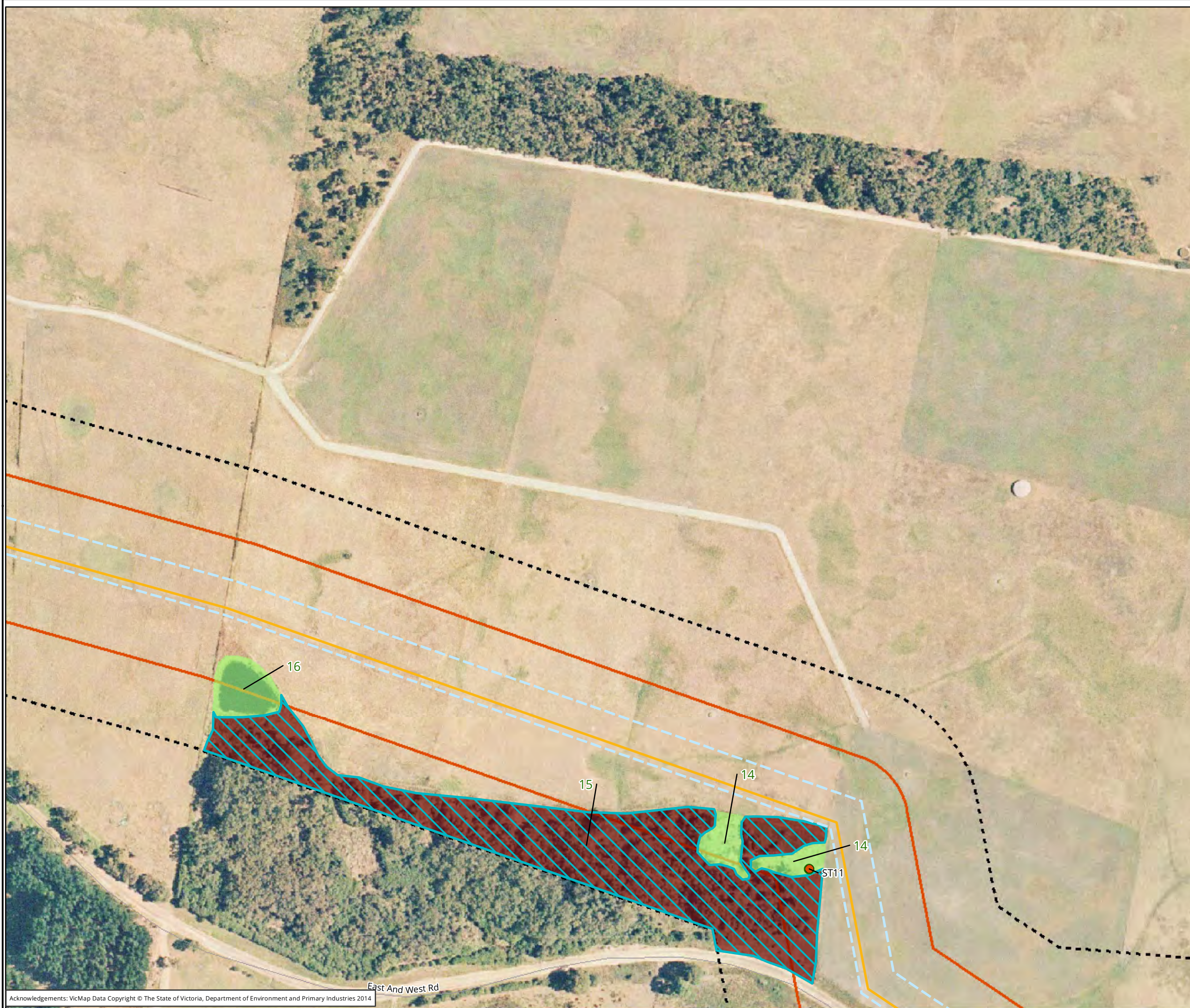


Metres  
Scale: 1:2,500 @ A3  
Coordinate System: GDA 1994 MGA Zone 54



Matter: 17973,  
Date: 29 September 2014,  
Checked by: RDS, Drawn by: JMS, Last edited by: jshepherd  
Location: P:\17900s\17973\Mapping\17973\_F2\_EcoFeatures





**Legend**

Proposed MEG Pipeline

- Current alignment
- ▭ Field assessed 2014
- - - Alignment 100m buffer

Scattered trees

- *Eucalyptus falciformis*
- ▭ Tree retention zone

Ecological Vegetation Class

- ▭ Plains Grassy Wetland
- ▭ Damp Heathy Woodland

Potential fauna habitat (EPBC)

- ▭ Southern Brown Bandicoot and Long-nosed Potoroo

Construction Impact

- - - Temp construction ROW

Figure 2.23: Ecological features of the study area

0 25 50 75 100 125

Metres

Scale: 1:2,500 @ A3

Coordinate System: GDA 1994 MGA Zone 54

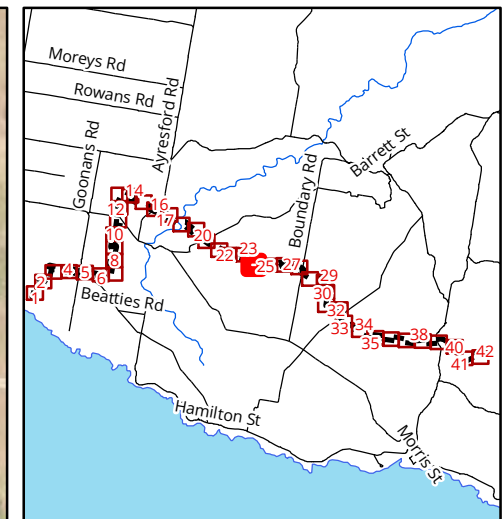
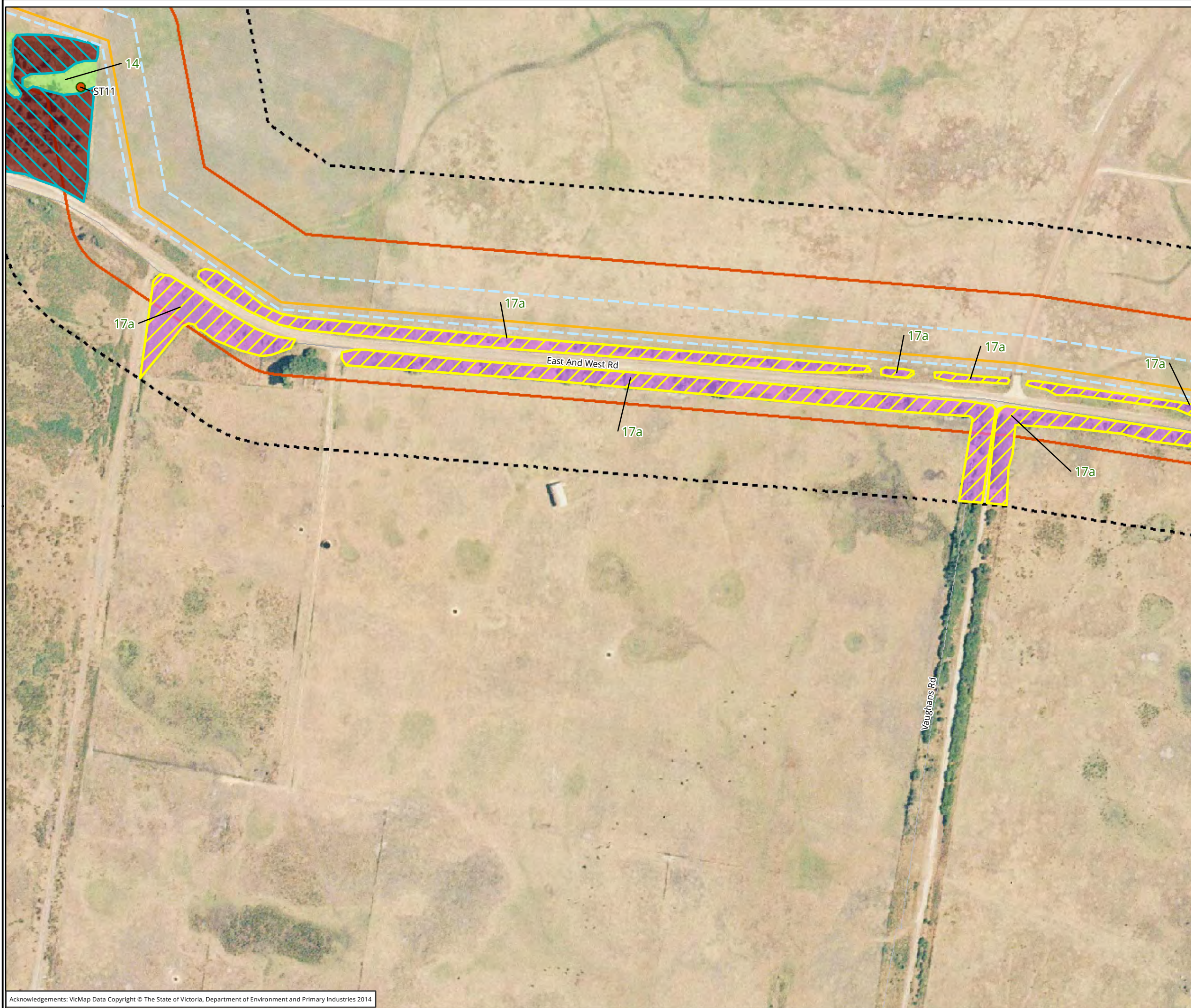
**biosis**

Biosis Pty Ltd

Ballarat, Brisbane, Canberra, Melbourne, Sydney, Wangaratta & Wollongong

Matter: 17973,  
Date: 29 September 2014,  
Checked by: RDS, Drawn by: JMS, Last edited by: jshepherd  
Location: P:\17900s\17973\Mapping\17973\_F2\_EcoFeatures





**Legend**

Proposed MEG Pipeline

- Current alignment
- Field assessed 2014
- - - Alignment 100m buffer

Scattered trees

- *Eucalyptus falciformis*
- ▭ Tree retention zone

Ecological Vegetation Class

- ▭ Plains Grassy Wetland
- ▭ Damp Heathy Woodland
- ▭ Damp Heath Scrub

Potential fauna habitat (EPBC)

- ▭ Southern Brown Bandicoot
- ▭ Southern Brown Bandicoot and Long-nosed Potoroo

Construction Impact

- ▭ Temp construction ROW

Figure 2.24: Ecological features of the study area

0 25 50 75 100 125

Metres

Scale: 1:2,500 @ A3

Coordinate System: GDA 1994 MGA Zone 54

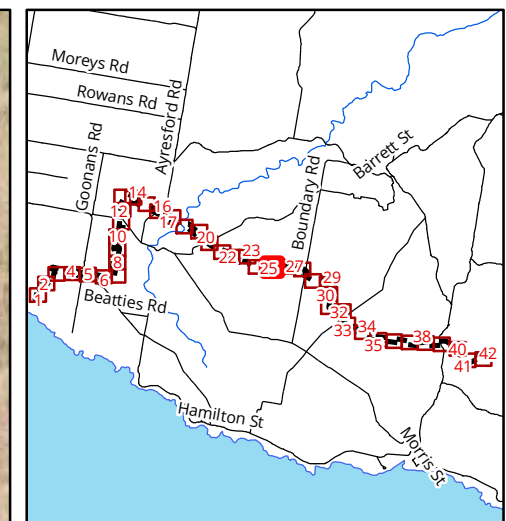
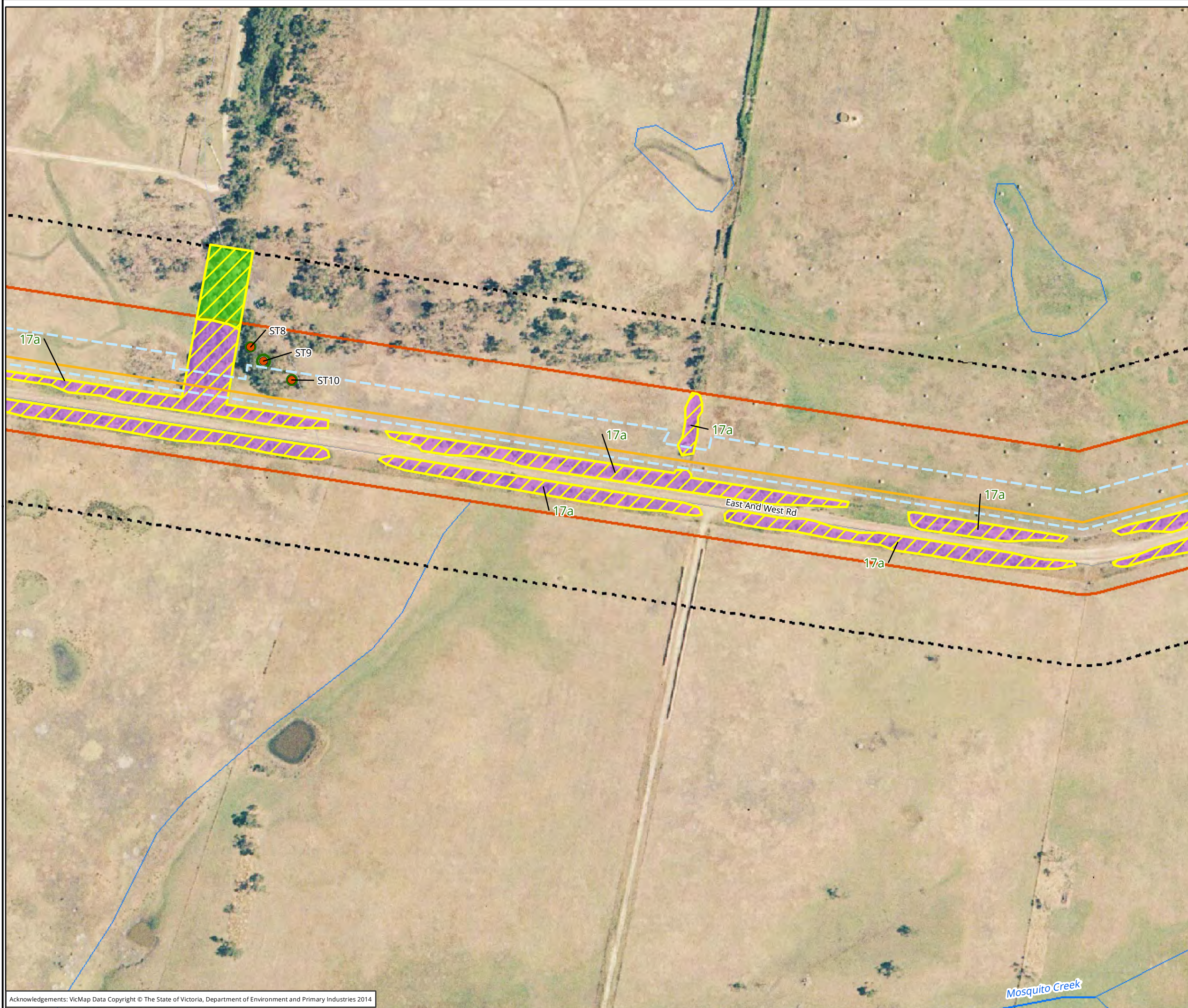
**biosis**

Biosis Pty Ltd

Ballarat, Brisbane, Canberra, Melbourne, Sydney, Wangaratta & Wollongong

Matter: 17973,  
Date: 29 September 2014,  
Checked by: RDS, Drawn by: JMS, Last edited by: jshepherd  
Location: P:\17900s\17973\Mapping\17973\_F2\_EcoFeatures





- Legend**
- Proposed MEG Pipeline
    - Current alignment
  - Field assessed 2014
  - Alignment 100m buffer
  - Scattered trees
    - Eucalyptus falciformis*
  - Tree retention zone
  - Ecological Vegetation Class
    - Heathy Woodland
    - Damp Heath Scrub
  - Potential fauna habitat (EPBC)
    - Southern Brown Bandicoot
  - Construction Impact
    - Temp construction ROW

Figure 2.25: Ecological features of the study area

0 25 50 75 100 125

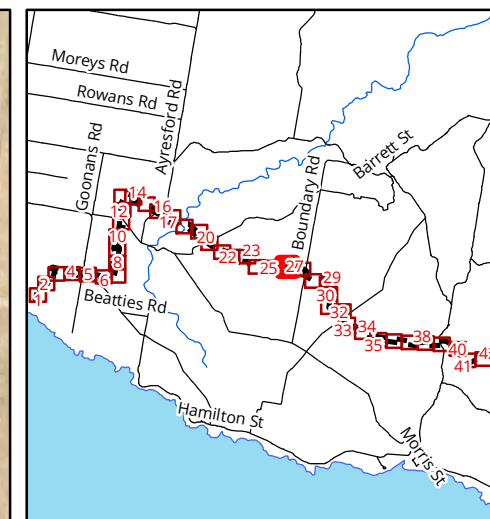
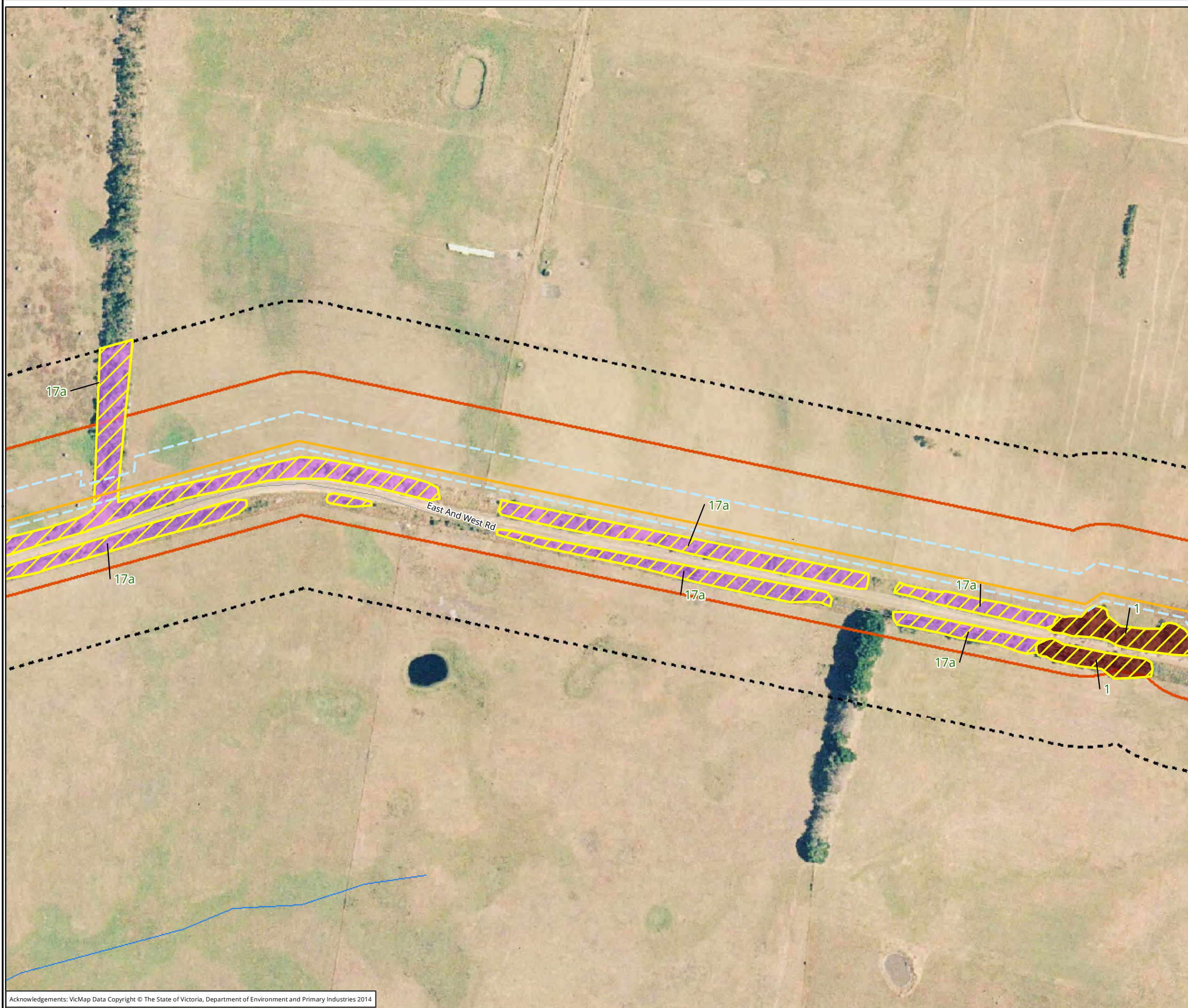
Metres  
Scale: 1:2,500 @ A3  
Coordinate System: GDA 1994 MGA Zone 54



Ballarat, Brisbane, Canberra, Melbourne,  
Sydney, Wangaratta & Wollongong

Matter: 17973,  
Date: 29 September 2014,  
Checked by: RDS, Drawn by: JMS, Last edited by: jshepherd  
Location: P:\17900s\17973\Mapping\17973\_F2\_EcoFeatures





**Legend**

Proposed MEG Pipeline

- Current alignment
- Field assessed 2014
- - - Alignment 100m buffer

Ecological Vegetation Class

- Damp Heathy Woodland
- Damp Heath Scrub

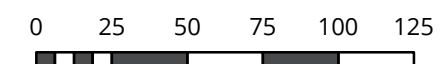
Potential fauna habitat (EPBC)

- ▨ Southern Brown Bandicoot

Construction Impact

- - - Temp construction ROW

Figure 2.26: Ecological features of the study area



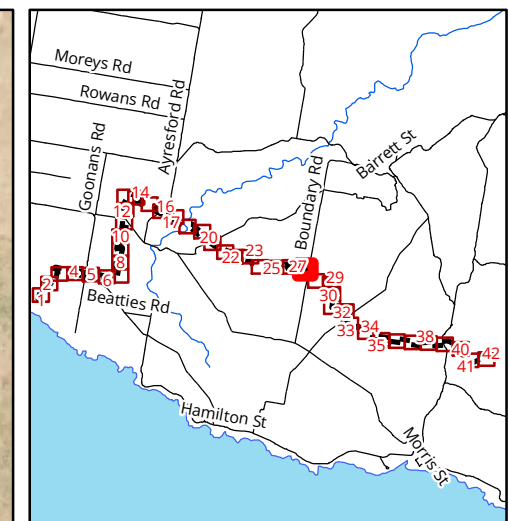
Metres  
Scale: 1:2,500 @ A3  
Coordinate System: GDA 1994 MGA Zone 54



Ballarat, Brisbane, Canberra, Melbourne,  
Sydney, Wangaratta & Wollongong

Matter: 17973,  
Date: 29 September 2014,  
Checked by: RDS, Drawn by: JMS, Last edited by: jshepherd  
Location: P:\17900s\17973\Mapping\17973\_F2\_EcoFeatures





### Legend

Proposed MEG Pipeline

— Current alignment

Field assessed 2014

Alignment 100m buffer

Scattered trees

▲ *Eucalyptus ovata*

Tree retention zone

Ecological Vegetation Class

Damp Heathy Woodland

Potential fauna habitat (EPBC)

Southern Brown Bandicoot

Construction Impact

Temp construction ROW

AWS area

Figure 2.27: Ecological features of the study area

0 25 50 75 100 125

Metres

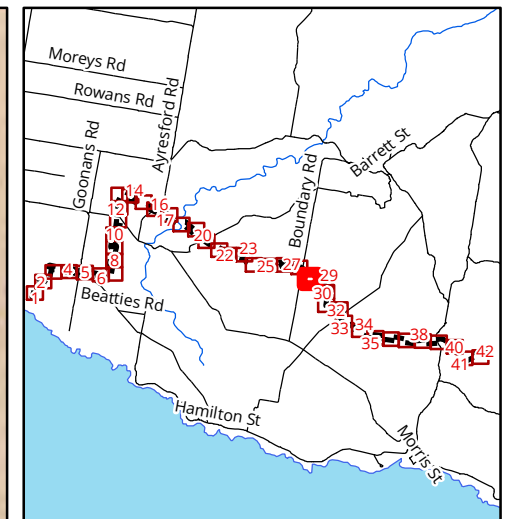
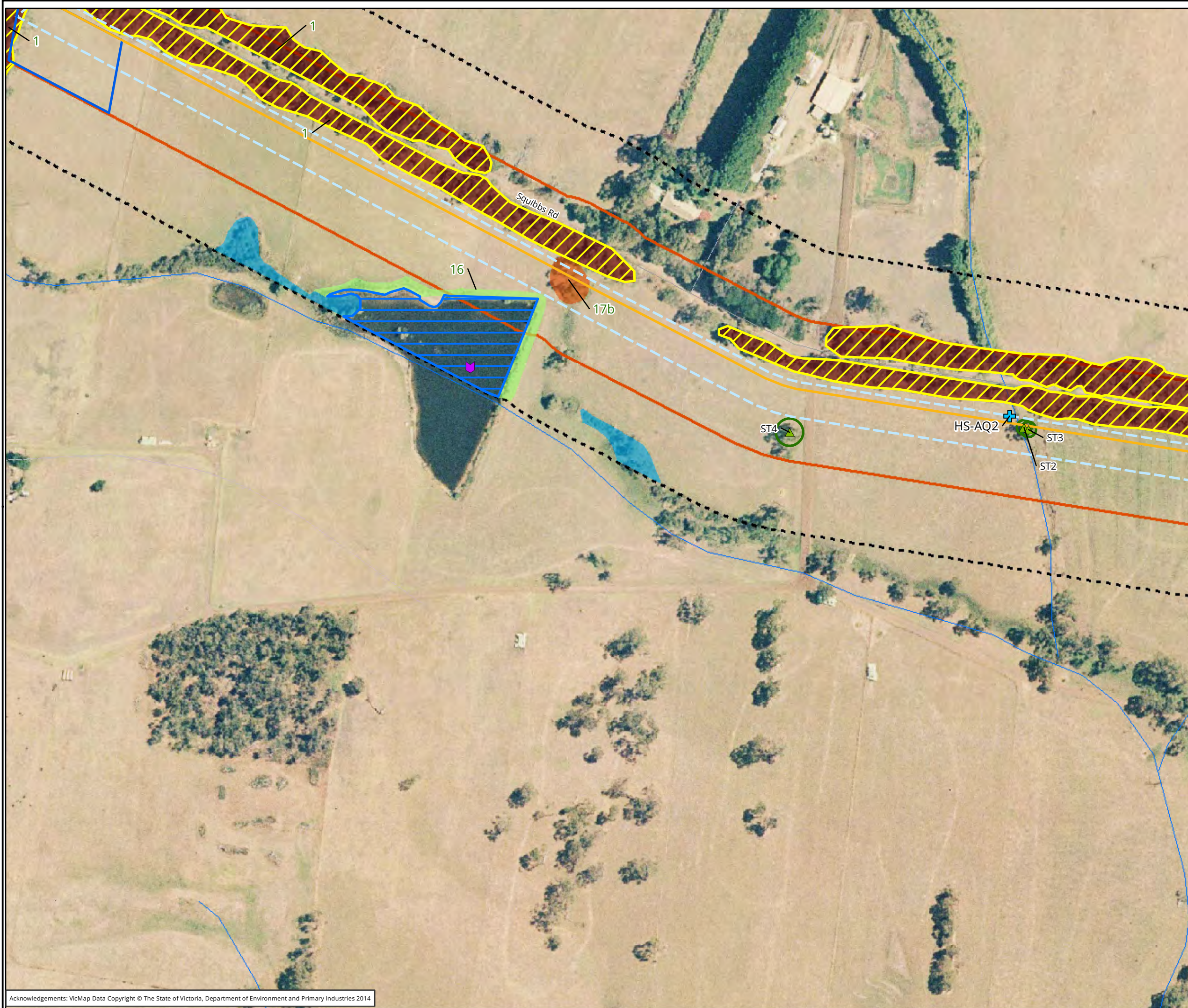
Scale: 1:2,500 @ A3  
Coordinate System: GDA 1994 MGA Zone 54



Ballarat, Brisbane, Canberra, Melbourne,  
Sydney, Wangaratta & Wollongong

Matter: 17973,  
Date: 29 September 2014,  
Checked by: RDS, Drawn by: JMS, Last edited by: jshepherd  
Location: P:\17900s\17973\Mapping\17973\_F2\_EcoFeatures





- Legend**
- Proposed MEG Pipeline
- Current alignment
  - Field assessed 2014
  - - - Alignment 100m buffer
- Scattered trees
- ▲ *Eucalyptus ovata*
  - Tree retention zone
- Ecological Vegetation Class
- Swampy Riparian Woodland
  - Swamp Scrub
  - Plains Grassy Wetland
  - Damp Heathy Woodland
- Aquatic assessment
- +
- Potential fauna habitat (EPBC)
- ▨ Southern Brown Bandicoot
  - ▨ Growling Grass Frog
- Threatened fauna observed
- ◆ Hardhead
- Construction Impact
- Temp construction ROW
  - AWS area

Figure 2.28: Ecological features of the study area

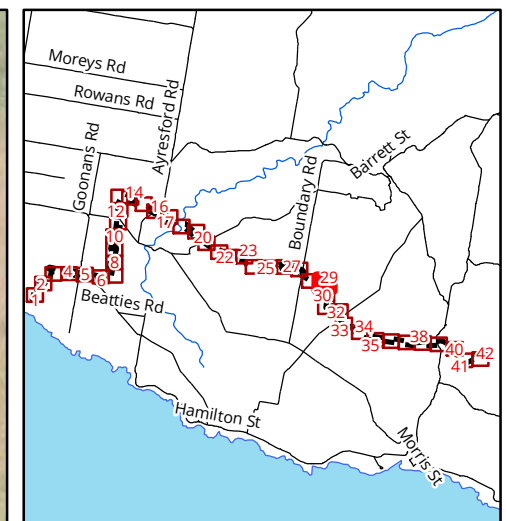
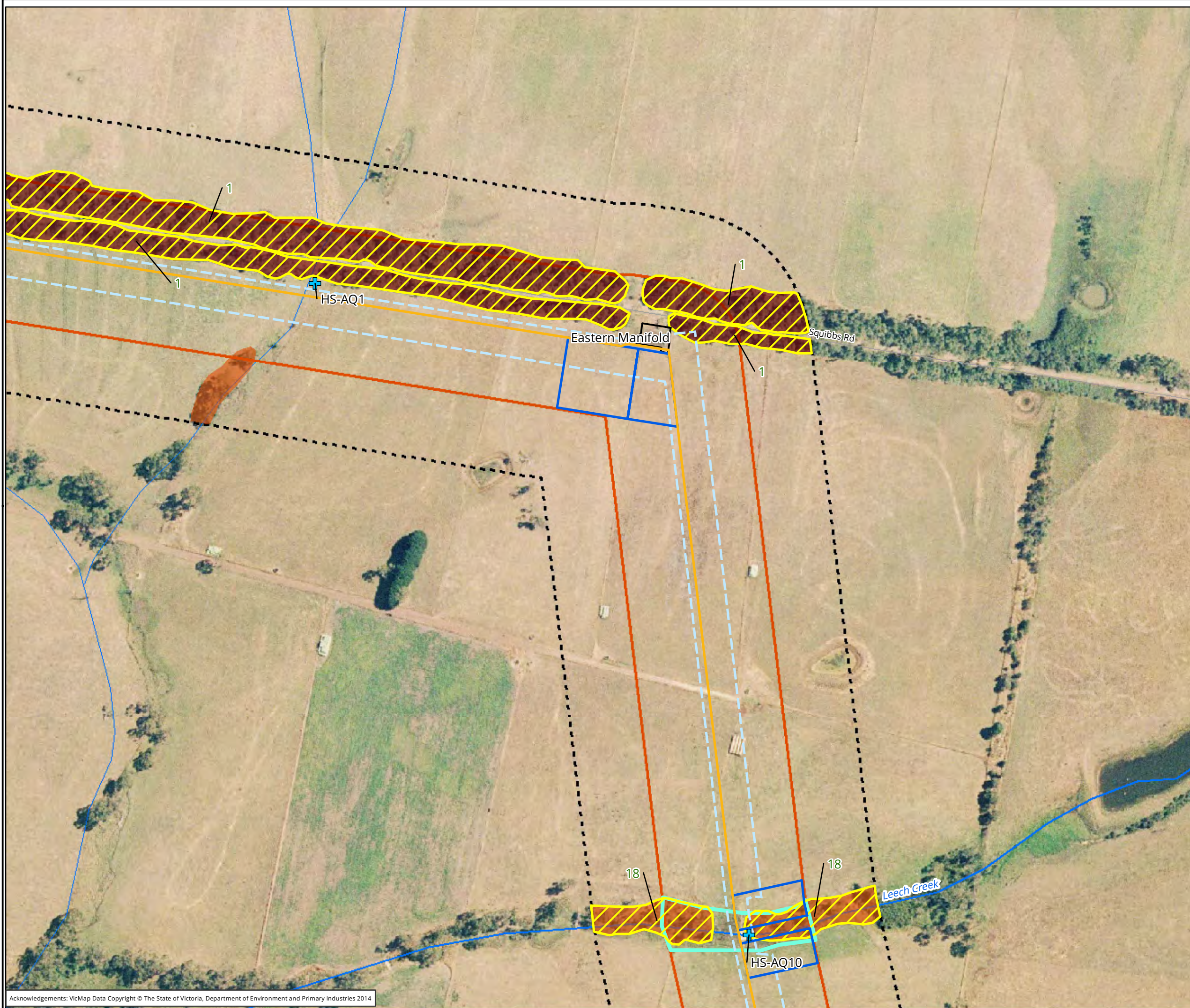
0 25 50 75 100 125

Metres  
Scale: 1:2,500 @ A3  
Coordinate System: GDA 1994 MGA Zone 54

**biosis**  
Biosis Pty Ltd  
Ballarat, Brisbane, Canberra, Melbourne,  
Sydney, Wangaratta & Wollongong

Matter: 17973,  
Date: 29 September 2014,  
Checked by: RDS, Drawn by: JMS, Last edited by: jshepherd  
Location: P:\17900s\17973\Mapping\17973\_F2\_EcoFeatures





**Legend**

Proposed MEG Pipeline

- Current alignment
- ▭ Field assessed 2014
- - - Alignment 100m buffer

Ecological Vegetation Class

- ▨ Swampy Riparian Woodland
- ▨ Damp Heathy Woodland

Aquatic assessment

- ⊕

Potential fauna habitat (EPBC)

- ▨ Southern Brown Bandicoot

Proposed

- ▨ Burrowing Crayfish buffer

Construction Impact

- - - Temp construction ROW
- ▭ AWS area

Figure 2.29: Ecological features of the study area

0 25 50 75 100 125

Metres

Scale: 1:2,500 @ A3

Coordinate System: GDA 1994 MGA Zone 54

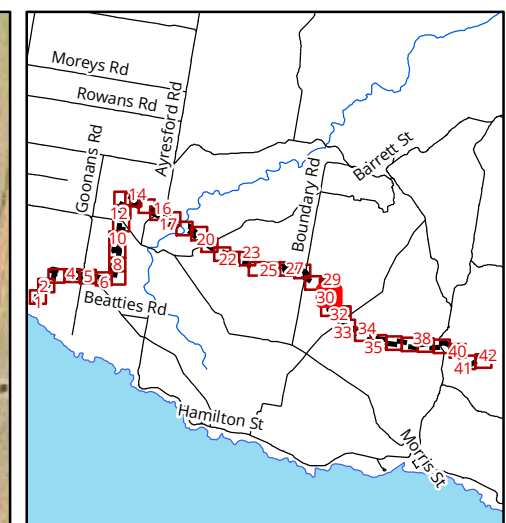
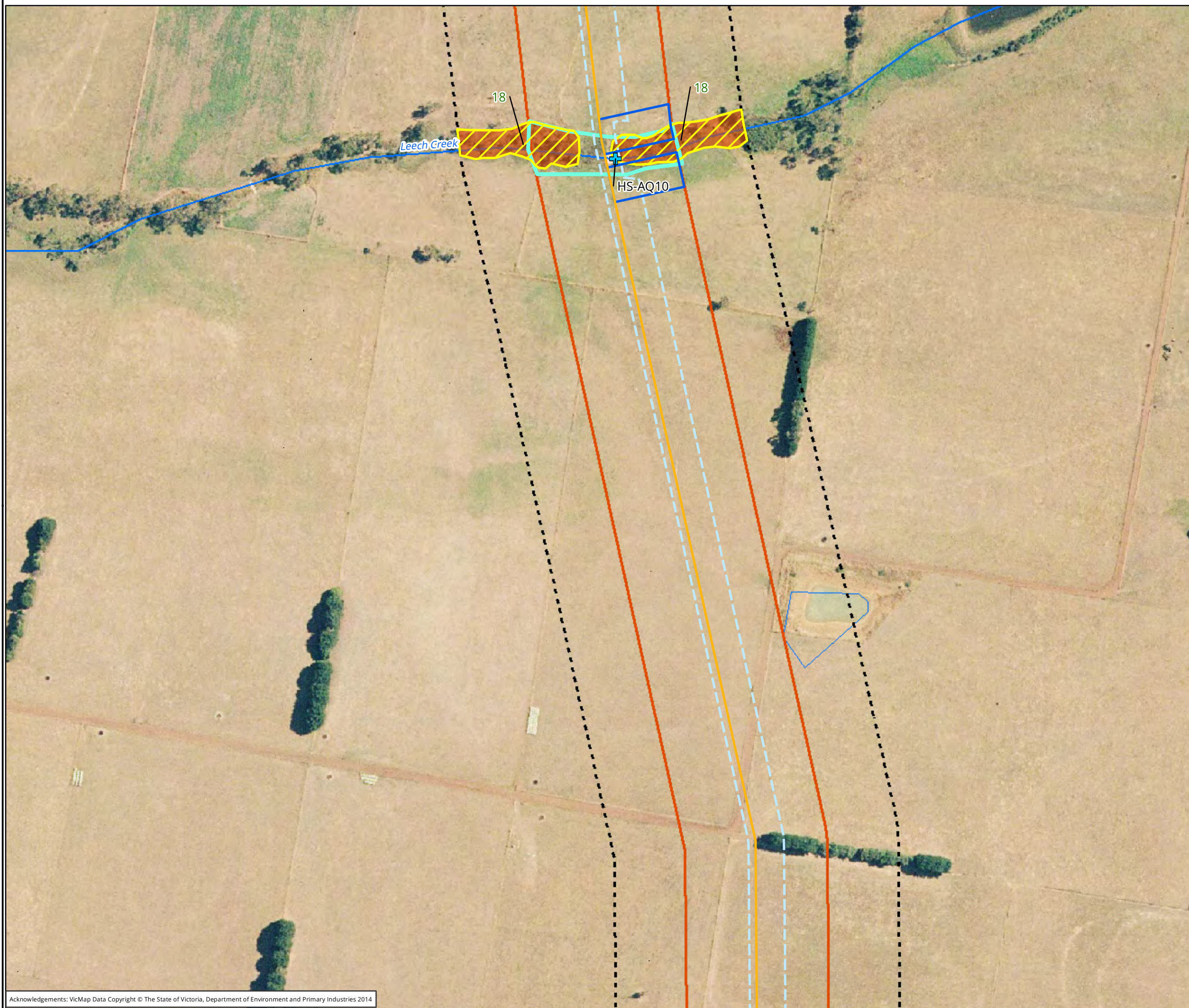
**biosis**

Biosis Pty Ltd

Ballarat, Brisbane, Canberra, Melbourne, Sydney, Wangaratta & Wollongong

Matter: 17973,  
Date: 29 September 2014,  
Checked by: RDS, Drawn by: JMS, Last edited by: jshepherd  
Location: P:\17900s\17973\Mapping\17973\_F2\_EcoFeatures





### Legend

#### Proposed MEG Pipeline

— Current alignment

Field assessed 2014

Alignment 100m buffer

#### Ecological Vegetation Class

Swampy Riparian Woodland

Aquatic assessment

#### Potential fauna habitat (EPBC)

Southern Brown Bandicoot

Proposed  
Burrowing Crayfish buffer

#### Construction Impact

Temp construction ROW

AWS area

Figure 2.30: Ecological features of the study area

0 25 50 75 100 125

Metres

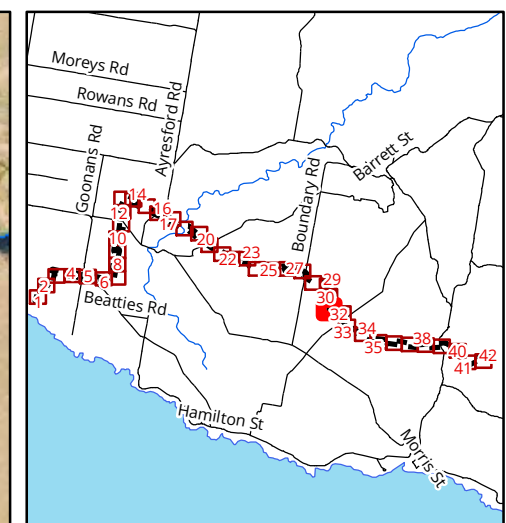
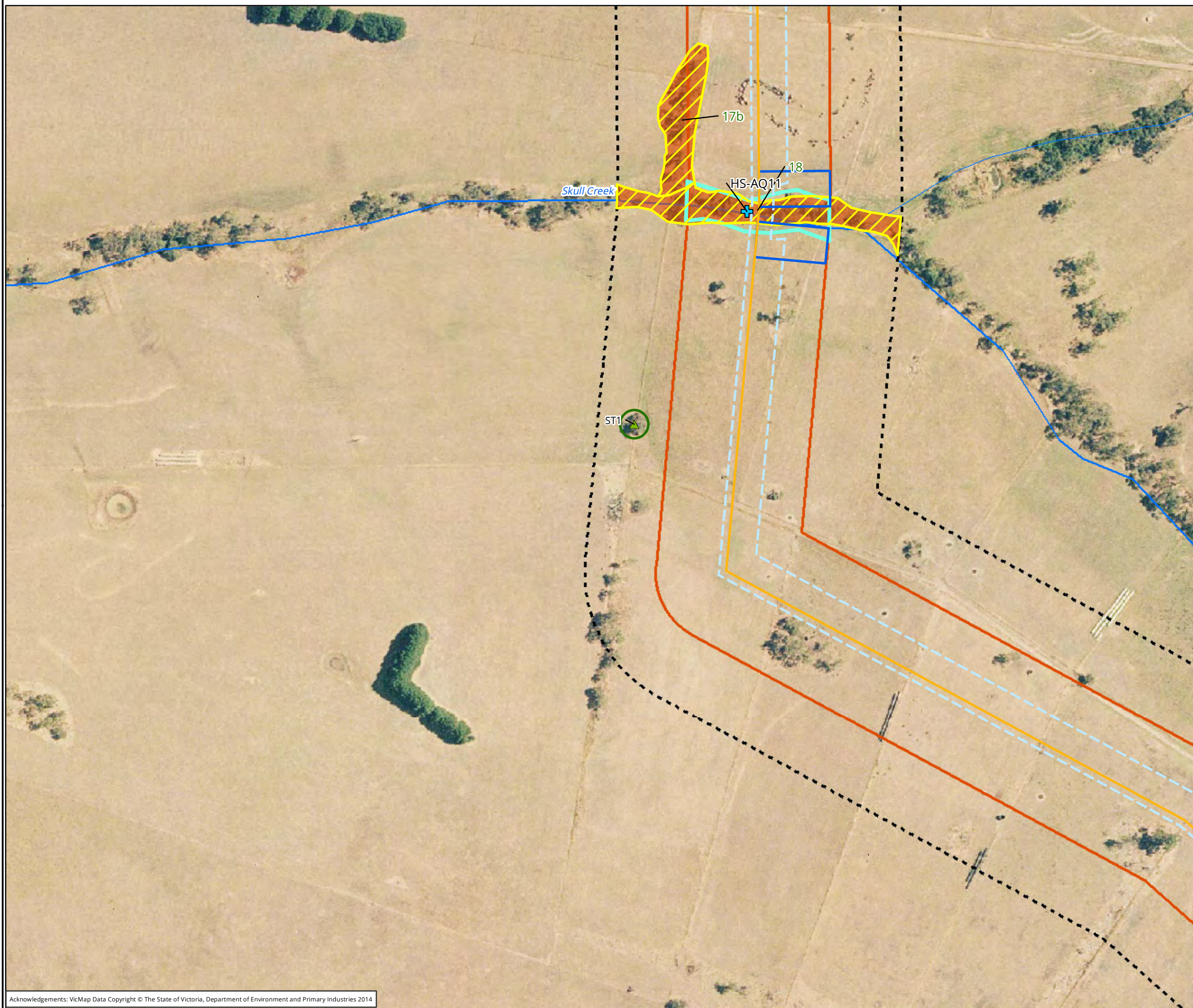
Scale: 1:2,500 @ A3  
Coordinate System: GDA 1994 MGA Zone 54



Ballarat, Brisbane, Canberra, Melbourne,  
Sydney, Wangaratta & Wollongong

Matter: 17973,  
Date: 29 September 2014,  
Checked by: RDS, Drawn by: JMS, Last edited by: jshepherd  
Location: P:\17900s\17973\Mapping\17973\_F2\_EcoFeatures





- Legend**
- Proposed MEG Pipeline
- Current alignment
  - Field assessed 2014
  - Alignment 100m buffer
- Scattered trees
- ▲ *Eucalyptus ovata*
  - Tree retention zone
- Ecological Vegetation Class
- Swampy Riparian Woodland
  - Aquatic assessment
- Potential fauna habitat (EPBC)
- Southern Brown Bandicoot
  - Proposed Burrowing Crayfish buffer
- Construction Impact
- Temp construction ROW
  - AWS area

Figure 2.31: Ecological features of the study area

0 25 50 75 100 125

Metres

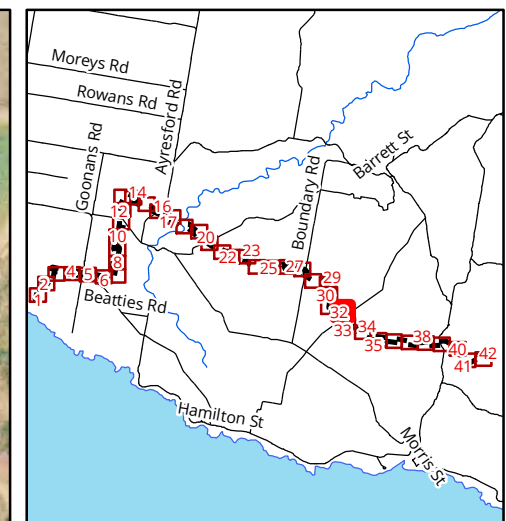
Scale: 1:2,500 @ A3  
Coordinate System: GDA 1994 MGA Zone 54



Ballarat, Brisbane, Canberra, Melbourne,  
Sydney, Wangaratta & Wollongong

Matter: 17973,  
Date: 29 September 2014,  
Checked by: RDS, Drawn by: JMS, Last edited by: jshepherd  
Location: P:\17900s\17973\Mapping\17973\_F2\_EcoFeatures





**Legend**

Proposed MEG Pipeline

- Current alignment
- Field assessed 2014
- - - Alignment 100m buffer

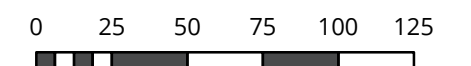
Ecological Vegetation Class

- Damp Heathy Woodland
- Potential fauna habitat (EPBC)
- Southern Brown Bandicoot

Construction Impact

- - - Temp construction ROW
- AWS area

Figure 2.32: Ecological features of the study area



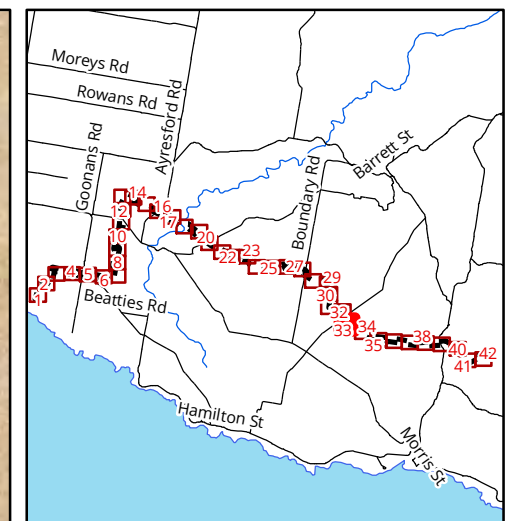
Metres  
Scale: 1:2,500 @ A3  
Coordinate System: GDA 1994 MGA Zone 54



Ballarat, Brisbane, Canberra, Melbourne,  
Sydney, Wangaratta & Wollongong

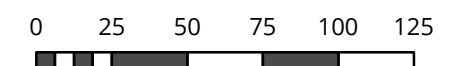
Matter: 17973,  
Date: 29 September 2014,  
Checked by: RDS, Drawn by: JMS, Last edited by: jshepherd  
Location: P:\17900s\17973\Mapping\17973\_F2\_EcoFeatures





- Legend**
- Proposed MEG Pipeline**
- Current alignment
  - Desktop assessment
  - Field assessed 2014
  - Field assessed 2009/2010
  - Alignment 100m buffer
  - Field assessed 2010
  - Alternate alignment 2010
- Ecological Vegetation Class**
- Damp Heathy Woodland
- Potential fauna habitat (EPBC)**
- Southern Brown Bandicoot
- Construction Impact**
- Temp construction ROW
  - AWS area

Figure 2.33: Ecological features of the study area



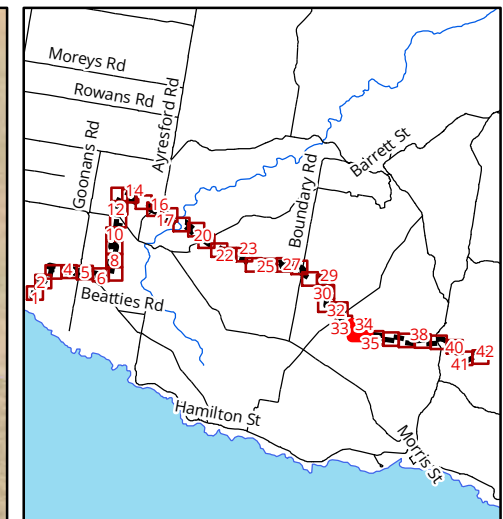
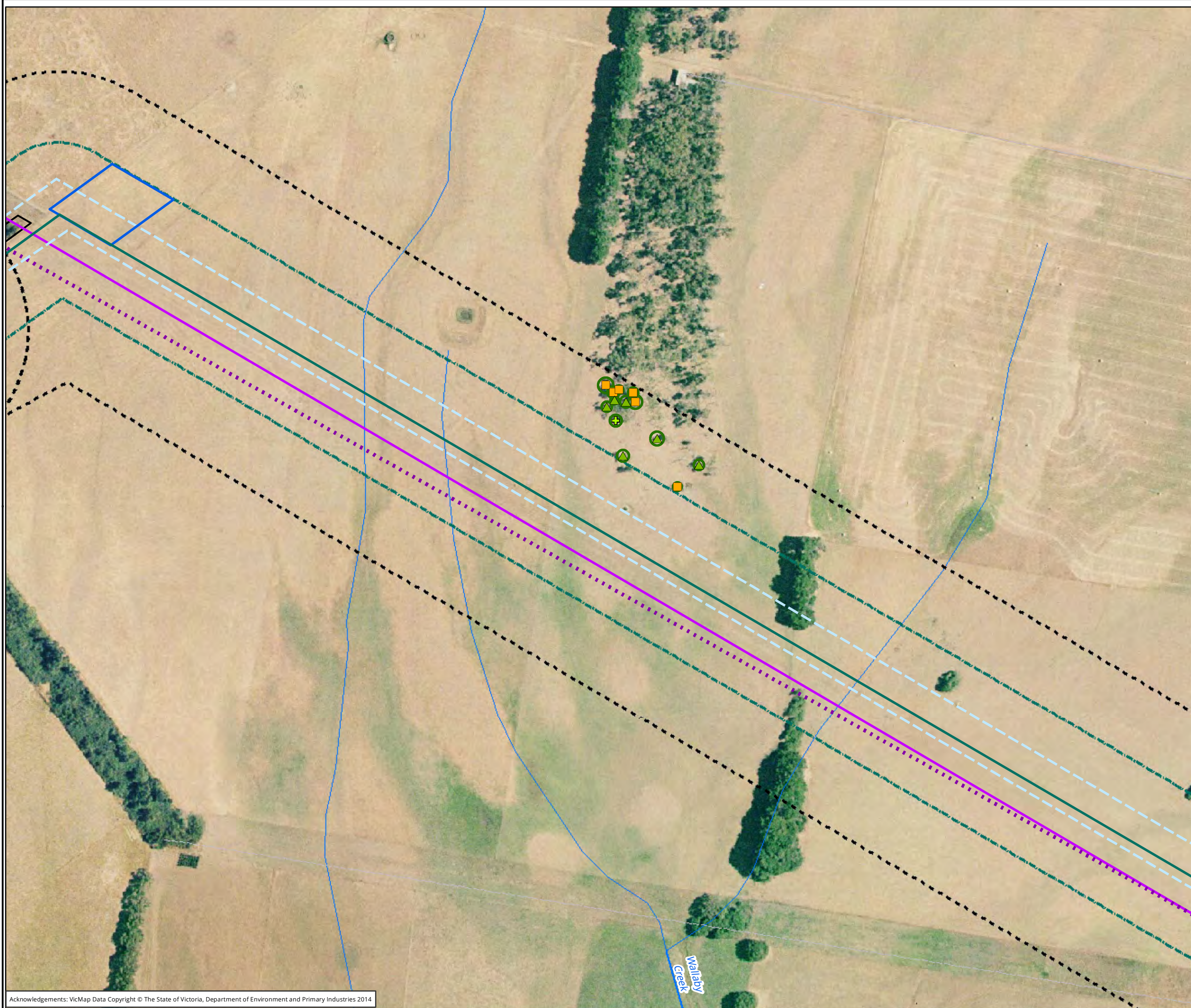
Metres  
Scale: 1:2,500 @ A3  
Coordinate System: GDA 1994 MGA Zone 54



Ballarat, Brisbane, Canberra, Melbourne,  
Sydney, Wangaratta & Wollongong

Matter: 17973,  
Date: 29 September 2014,  
Checked by: RDS, Drawn by: JMS, Last edited by: jshepherd  
Location: P:\17900s\17973\Mapping\17973\_F2\_EcoFeatures





**Legend**

Proposed MEG Pipeline

- Desktop assessment
- Field assessed 2009/2010
- - - Alignment 100m buffer
- Field assessed 2010
- - - Alternate alignment 2010

Scattered trees

- + *Eucalyptus aff. willisii*
- *Eucalyptus obliqua*
- ▲ *Eucalyptus ovata*

Tree retention zone

- Tree retention zone

Construction Impact

- Temp construction ROW
- AWS area

Figure 2.34: Ecological features of the study area

0 25 50 75 100 125

Metres

Scale: 1:2,500 @ A3

Coordinate System: GDA 1994 MGA Zone 54

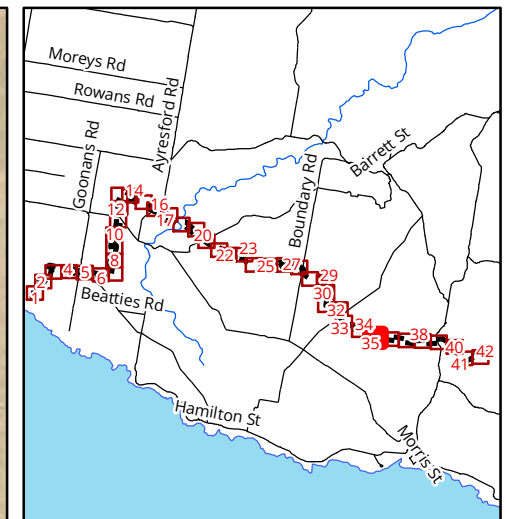
**biosis**

Biosis Pty Ltd

Ballarat, Brisbane, Canberra, Melbourne, Sydney, Wangaratta & Wollongong

Matter: 17973,  
Date: 29 September 2014,  
Checked by: RDS, Drawn by: JMS, Last edited by: jshepherd  
Location: P:\17900s\17973\Mapping\17973\_F2\_EcoFeatures





**Legend**

Proposed MEG Pipeline

- Desktop assessment
- Field assessed 2009/2010
- Alignment 100m buffer
- Field assessed 2010
- Alternate alignment 2010

Scattered trees

- Eucalyptus ovata*
- Tree retention zone

Ecological Vegetation Class

- Swamp Scrub
- Damp Heath Scrub
- Lowland Forest

Construction Impact

- Temp construction ROW

Figure 2.35: Ecological features of the study area

0 25 50 75 100 125

Metres

Scale: 1:2,500 @ A3

Coordinate System: GDA 1994 MGA Zone 54

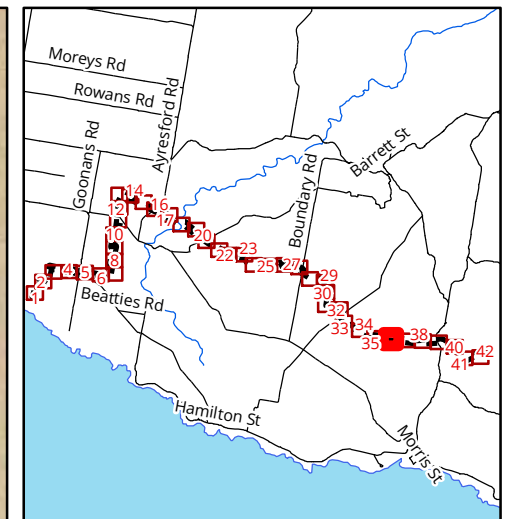
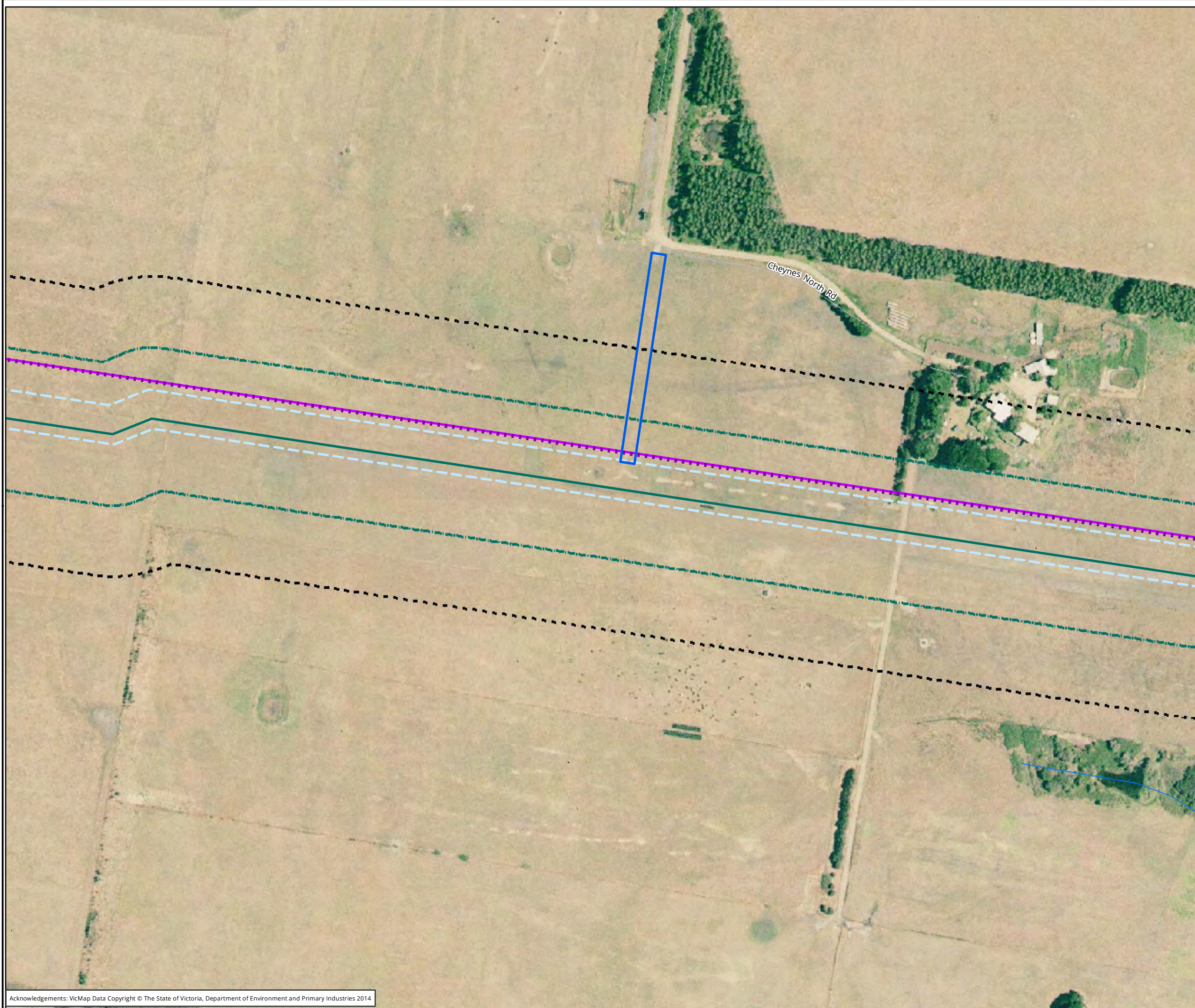
**biosis**

Biosis Pty Ltd

Ballarat, Brisbane, Canberra, Melbourne, Sydney, Wangaratta & Wollongong

Matter: 17973,  
Date: 29 September 2014,  
Checked by: RDS, Drawn by: JMS, Last edited by: jshepherd  
Location: P:\17900s\17973\Mapping\17973\_F2\_EcoFeatures





**Legend**

Proposed MEG Pipeline

- Desktop assessment
- Field assessed 2009/2010
- Alignment 100m buffer
- Field assessed 2010
- Alternate alignment 2010

Construction Impact

- Temp construction ROW
- AWS area

Figure 2.36: Ecological features of the study area

0 25 50 75 100 125

Metres

Scale: 1:2,500 @ A3

Coordinate System: GDA 1994 MGA Zone 54

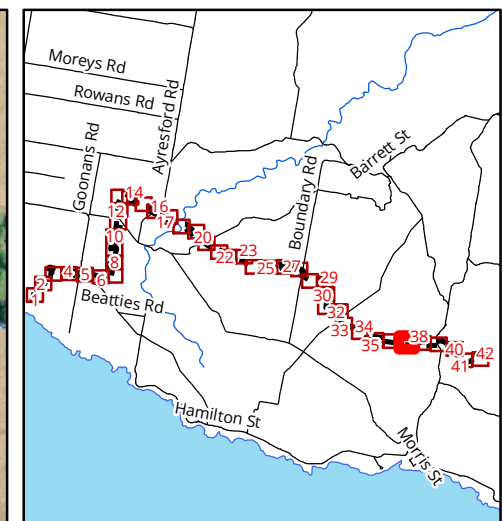
**biosis**

Biosis Pty Ltd

Ballarat, Brisbane, Canberra, Melbourne, Sydney, Wangaratta & Wollongong

Matter: 17973,  
Date: 29 September 2014,  
Checked by: RDS, Drawn by: JMS, Last edited by: jshepherd  
Location: P:\17900s\17973\Mapping\17973\_F2\_EcoFeatures





**Legend**

Proposed MEG Pipeline

- Desktop assessment
- Field assessed 2009/2010
- Alignment 100m buffer
- Field assessed 2010
- Alternate alignment 2010

Construction Impact

- Temp construction ROW


Figure 2.37: Ecological features of the study area

0 25 50 75 100 125

Metres

Scale: 1:2,500 @ A3

Coordinate System: GDA 1994 MGA Zone 54

 **biosis**

Biosis Pty Ltd

Ballarat, Brisbane, Canberra, Melbourne, Sydney, Wangaratta & Wollongong

Matter: 17973,  
Date: 29 September 2014,  
Checked by: RDS, Drawn by: JMS, Last edited by: jshepherd  
Location: P:\17900s\17973\Mapping\17973\_F2\_EcoFeatures