

V-1401
TEG CONTACTOR 1

E-1402
GAS/ GLYCOL
EXCHANGER 1

A-1403
TEG REGENERATION
PACKAGE 1

V-1501
SALES GAS
FILTER COALESCER

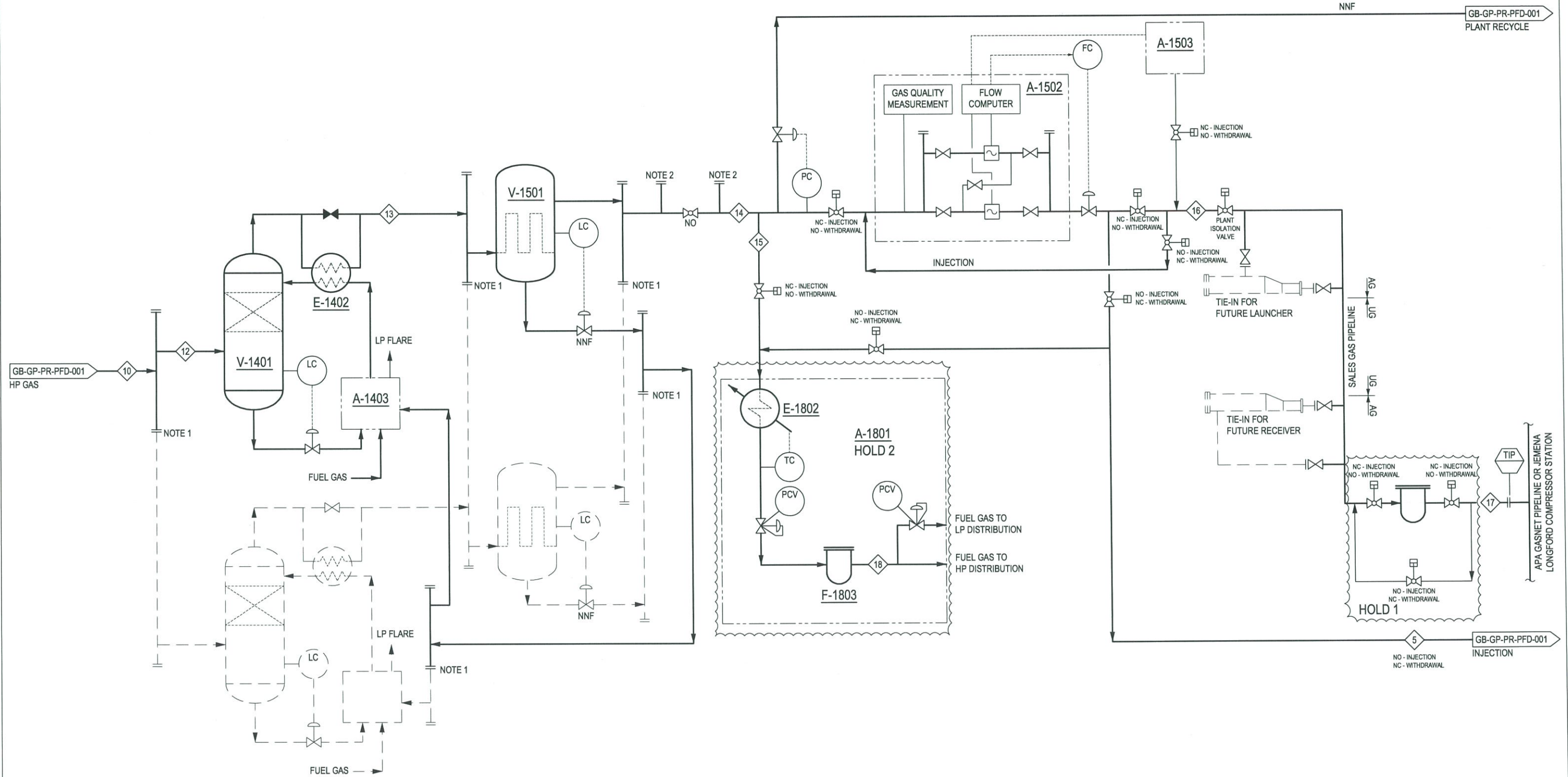
A-1801
FUEL GAS SKID

E-1802
FUEL GAS HEATER

F-1803
FUEL GAS FILTER

A-1502
SALES/ INJECTION
GAS METERING SKID

A-1503
ODOURANT INJECTION
PACKAGE



NOTES:

- EQUIPMENT CONFIGURATION SHOWN IS FOR BLOWDOWN PHASE. ADDITIONAL PARALLEL EQUIPMENT FOR STORAGE PHASE (INJECTION/ WITHDRAWAL) SHOWN DASHED.
- CONNECTIONS FOR FUTURE HYDROGEN SULPHIDE REMOVAL OR DEW POINT CONTROL UNIT.

HOLDS:

- REQUIREMENT FOR DUST FILTER ON SALES GAS PIPELINE IS ON HOLD UNTIL THE INTERFACE CONDITIONS ARE DEFINED.
- FUEL GAS SKID MAY FORM PART OF GLYCOL REGENERATION SKID.

REVIEWED
By James McMahon at 8:57 pm, Jun 05, 2019

PRELIMINARY

No	Revision	Note: * indicates signatures on original issue of drawing or last revision of drawing	Drawn	Job Manager	Project Director	Date
A	ISSUED FOR REVIEW - PREVIOUSLY GB-GP-PR-PD-002		SOB	PM/PM		16.05.19



145 Ann St Brisbane QLD 4000 Australia
GPO Box 668 Brisbane QLD 4001
T 61 7 3316 3000 F 61 7 3316 3333
E bne@mail@ghd.com W www.ghd.com

DO NOT SCALE

Conditions of Use.
This document may only be used by GHD's client (and any other person who GHD has agreed can use this document) for the purpose for which it was prepared and must not be used by any other person or for any other purpose.

Drafting Check	SOBREN	Designer	James McMahon
Design Check		Design Check	
Approved (Project Director)	PM/PM	Date	21/5/19
Scale	NTS	This Drawing must not be used for Construction unless signed as Approved	

Client	GOLDEN BEACH ENERGY		
Project	GOLDEN BEACH DEVELOPMENT		
Title	GOLDEN BEACH PLANT PROCESS FLOW DIAGRAM (SHEET 2)		
Original Size	A1	Drawing No:	GB-GP-PR-PFD-002
Rev:	A		