

# Appendix A

Investigation Area  
Maps







## Tottenham TO Albury

## Study Areas

MAP 1 OF 34

0 130 260 m

Coordinate System: GDA 1994 MGA Zone 55

ARTC makes no representation or warranty and assumes no duty of care or other responsibility to any party as to the completeness, accuracy or suitability of the information contained in this GIS map. The GIS map has been prepared from material provided to ARTC by an external source and ARTC has not taken any steps to verify the completeness, accuracy or suitability of that material. ARTC will not be responsible for any loss or damage suffered as a result of any person whatsoever placing reliance upon the information contained within this GIS map.

Date: 19-Nov-19

Paper: A3

Author: JC

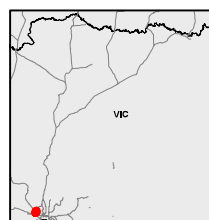
Scale: 1:7,000

Data Sources: ARTC

- Signal Gantry
- VicTrack Reserve
- Not Assessed
- ▨ Private Land

- Investigation Area
- Stage 1 - Concept
- ▨ Investigation Area (2018)
- Stage 2 - Feasibility
- ▨ Investigation Area 2019

- Project Area
- ▨ Project Area



**INLAND RAIL** **ARTC**

The Australian Government is delivering Inland Rail through the Australian Rail Track Corporation (ARTC), in partnership with the private sector.





## Tottanhan TO Albury

## Study Areas

MAP 2 OF 34

0 30 60  
m

Coordinate System: GDA 1994 MGA Zone 55

ARTC makes no representation or warranty and assumes no duty of care or other responsibility to any party as to the completeness, accuracy or suitability of the information contained in this GIS map. The GIS map has been prepared from material provided to ARTC by an external source and ARTC has not taken any steps to verify the completeness, accuracy or suitability of that material. ARTC will not be responsible for any loss or damage suffered as a result of any person whatsoever placing reliance upon the information contained within this GIS map.

Date: 19-Nov-19  
Author: JC  
Data Sources: ARTC

Paper: A3  
Scale: 1:2,000

- Signal Gantry
- VicTrack Reserve

### Investigation Area

Stage 1 - Concept

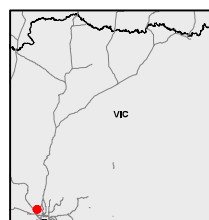
Investigation Area (2018)

Stage 2 - Feasibility

Investigation Area 2019

### Project Area

Project Area



**INLAND RAIL** **ARTC**

The Australian Government is delivering Inland Rail through the Australian Rail Track Corporation (ARTC), in partnership with the private sector.





## Tottenham TO Albury

## Study Areas

MAP 3 OF 34

0 25 50 m  
Coordinate System: GDA 1994 MGA Zone 55

ARTC makes no representation or warranty and assumes no duty of care or other responsibility to any party as to the completeness, accuracy or suitability of the information contained in this GIS map. The GIS map has been prepared from material provided to ARTC by an external source and ARTC has not taken any steps to verify the completeness, accuracy or suitability of that material. ARTC will not be responsible for any loss or damage suffered as a result of any person whatsoever placing reliance upon the information contained within this GIS map.

Date: 19-Nov-19  
Author: JC  
Data Sources: ARTC  
Paper: A3  
Scale: 1:1,300

● Signal Gantry  
--- VicTrack Reserve

### Investigation Area

Stage 1 - Concept

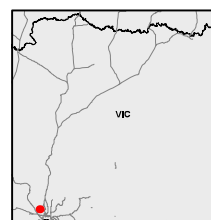
Investigation Area (2018)

Stage 2 - Feasibility

Investigation Area 2019

### Project Area

Project Area



**INLAND RAIL** **ARTC**

The Australian Government is delivering Inland Rail through the Australian Rail Track Corporation (ARTC), in partnership with the private sector.





## Tottenham TO Albury

## Study Areas

MAP 4 OF 34

0 75 150 m

Coordinate System: GDA 1994 MGA Zone 55

ARTC makes no representation or warranty and assumes no duty of care or other responsibility to any party as to the completeness, accuracy or suitability of the information contained in this GIS map. The GIS map has been prepared from material provided to ARTC by an external source and ARTC has not taken any steps to verify the completeness, accuracy or suitability of that material. ARTC will not be responsible for any loss or damage suffered as a result of any person whatsoever placing reliance upon the information contained within this GIS map.

Date: 19-Nov-19

Author: JC

Data Sources: ARTC

Paper: A3

Scale: 1:4,000

Signal Gantry

VicTrack Reserve

NoGo Zone

Not Assessed

Addition to Project Area

Private Land

Investigation Area

Stage 1 - Concept

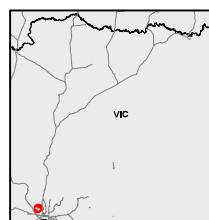
Investigation Area (2018)

Stage 2 - Feasibility

Investigation Area 2019

Project Area

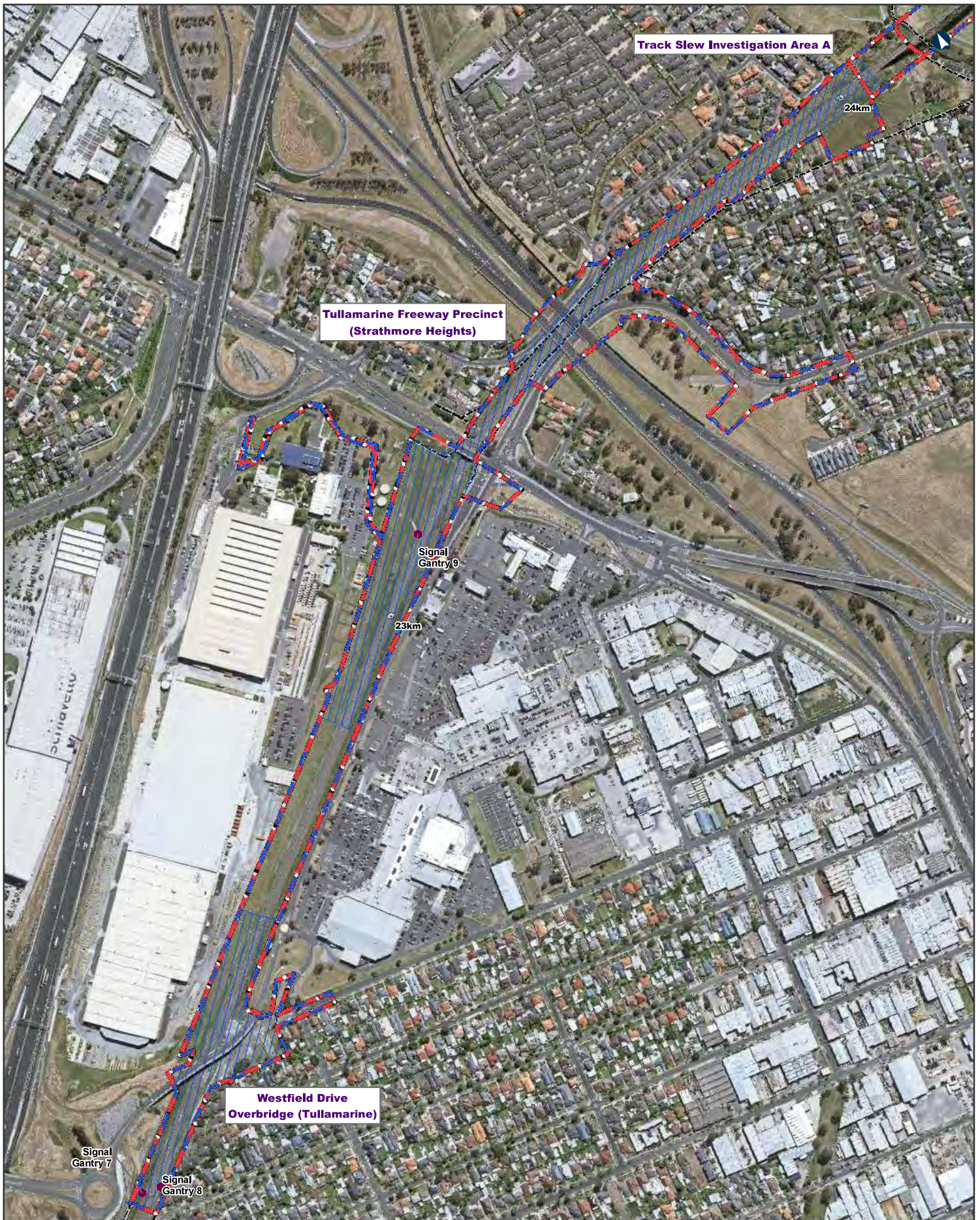
Project Area



**INLAND RAIL** **ARTC**

The Australian Government is delivering Inland Rail through the Australian Rail Track Corporation (ARTC), in partnership with the private sector.





## Tottenham TO Albury

## Study Areas

MAP 5 OF 34

0 90 180 m

Coordinate System: GDA 1994 MGA Zone 55

ARTC makes no representation or warranty and assumes no duty of care or other responsibility to any party as to the completeness, accuracy or suitability of the information contained in this GIS map. The GIS map has been prepared from material provided to ARTC by an external source and ARTC has not taken any steps to verify the completeness, accuracy or suitability of that material. ARTC will not be responsible for any loss or damage suffered as a result of any person whatsoever placing reliance upon the information contained within this GIS map.

Date: 19-Nov-19  
Author: JC  
Data Sources: ARTC

Paper: A3  
Scale: 1:5,000

Signal Gantry  
VicTrack Reserve

### Investigation Area

Stage 1 - Concept

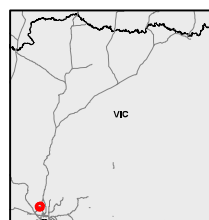
Investigation Area (2018)

Stage 2 - Feasibility

Investigation Area 2019

### Project Area

Project Area



**INLAND RAIL** **ARTC**

The Australian Government is delivering Inland Rail through the Australian Rail Track Corporation (ARTC), in partnership with the private sector.





## Tottenham TO Albury

## Study Areas

MAP 6 OF 34

0 80 160  
m

Coordinate System: GDA 1994 MGA Zone 55

ARTC makes no representation or warranty and assumes no duty of care or other responsibility to any party as to the completeness, accuracy or suitability of the information contained in this GIS map. The GIS map has been prepared from material provided to ARTC by an external source and ARTC has not taken any steps to verify the completeness, accuracy or suitability of that material. ARTC will not be responsible for any loss or damage suffered as a result of any person whatsoever placing reliance upon the information contained within this GIS map.

Date: 19-Nov-19

Paper: A3

Author: JC

Scale: 1:4,500

Data Sources: ARTC

Signal Gantry

VicTrack Reserve

Investigation Area

Stage 1 - Concept

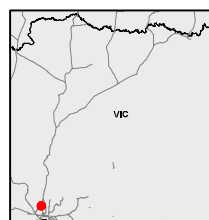
Investigation Area (2018)

Stage 2 - Feasibility

Investigation Area 2019

Project Area

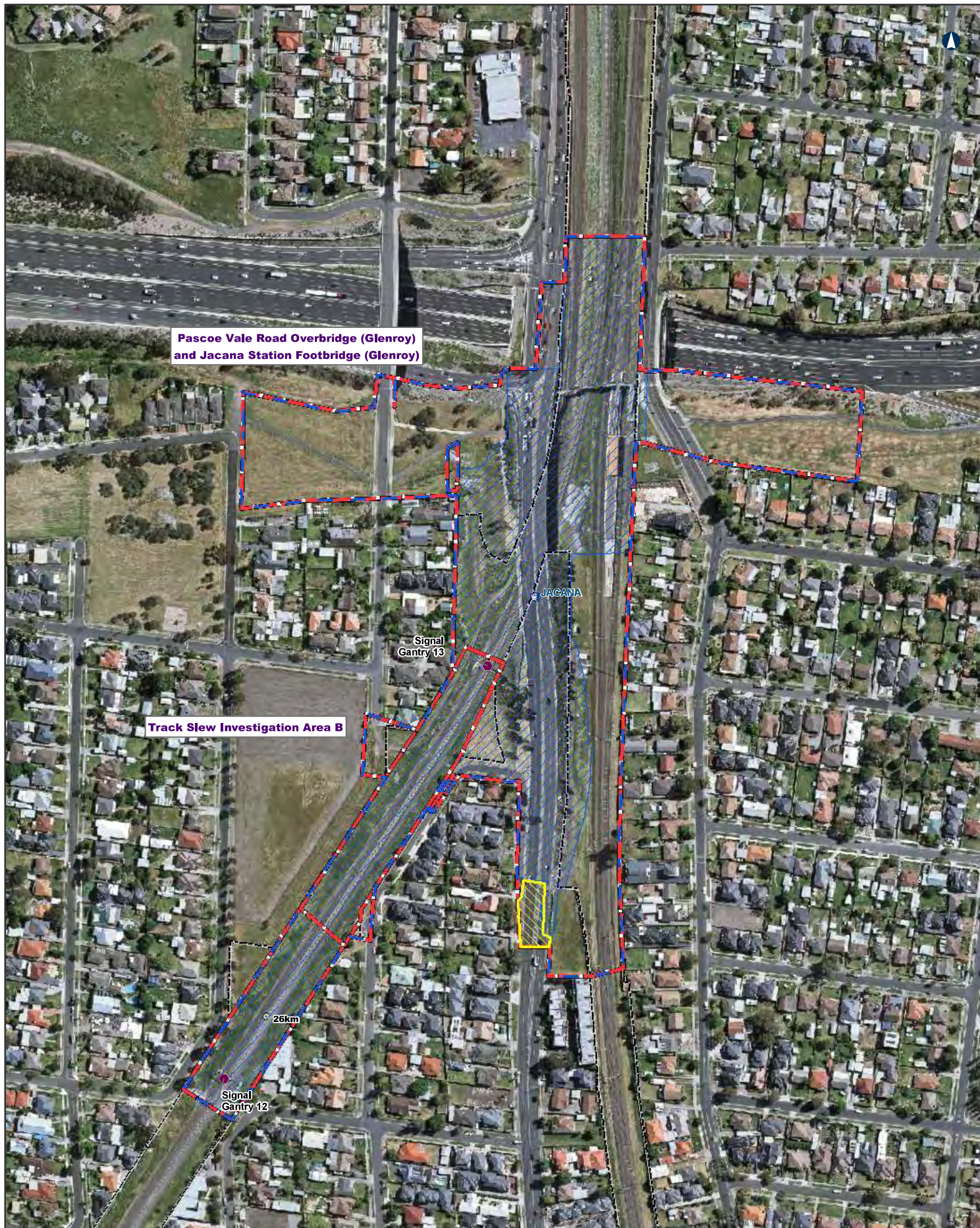
Project Area



**INLAND RAIL** **ARTC**

The Australian Government is delivering Inland Rail through the Australian Rail Track Corporation (ARTC), in partnership with the private sector.





## Tottenham TO Albury

## Study Areas

MAP 7 OF 34

0 40 80  
m

Coordinate System: GDA 1994 MGA Zone 55

ARTC makes no representation or warranty and assumes no duty of care or other responsibility to any party as to the completeness, accuracy or suitability of the information contained in this GIS map. The GIS map has been prepared from material provided to ARTC by an external source and ARTC has not taken any steps to verify the completeness, accuracy or suitability of that material. ARTC will not be responsible for any loss or damage suffered as a result of any person whatsoever placing reliance upon the information contained within this GIS map.

Date: 19-Nov-19

Paper: A3

Author: JC

Scale: 1:2,500

Data Sources: ARTC

● Signal Gantry

--- VicTrack Reserve

Not Assessed

▨ Addition to Project Area

Investigation Area

Stage 1 - Concept

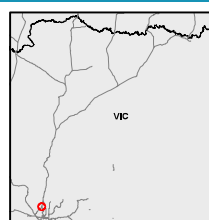
▨ Investigation Area (2018)

Stage 2 - Feasibility

▨ Investigation Area 2019

Project Area

▨ Project Area



**INLAND RAIL** **ARTC**

The Australian Government is delivering Inland Rail through the Australian Rail Track Corporation (ARTC), in partnership with the private sector.





## Tottenham TO Albury

## Study Areas

MAP 8 OF 34

0 50 100  
m

Coordinate System: GDA 1994 MGA Zone 55

ARTC makes no representation or warranty and assumes no duty of care or other responsibility to any party as to the completeness, accuracy or suitability of the information contained in this GIS map. The GIS map has been prepared from material provided to ARTC by an external source and ARTC has not taken any steps to verify the completeness, accuracy or suitability of that material. ARTC will not be responsible for any loss or damage suffered as a result of any person whatsoever placing reliance upon the information contained within this GIS map.

Date: 19-Nov-19

Paper: A3

Author: JC

Scale: 1:3,000

Data Sources: ARTC

- Signal Gantry
- VicTrack Reserve
- Not Assessed**
- ▨ Private Land

### Investigation Area

Stage 1 - Concept

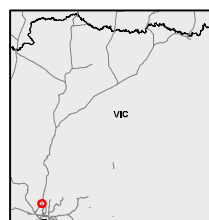
▨ Investigation Area (2018)

Stage 2 - Feasibility

▨ Investigation Area 2019

### Project Area

▨ Project Area



**INLAND RAIL** **ARTC**

The Australian Government is delivering Inland Rail through the Australian Rail Track Corporation (ARTC), in partnership with the private sector.





## Tottenham TO Albury

## Study Areas

MAP 9 OF 34

0 60 120  
m

Coordinate System: GDA 1994 MGA Zone 55

ARTC makes no representation or warranty and assumes no duty of care or other responsibility to any party as to the completeness, accuracy or suitability of the information contained in this GIS map. The GIS map has been prepared from material provided to ARTC by an external source and ARTC has not taken any steps to verify the completeness, accuracy or suitability of that material.

ARTC will not be responsible for any loss or damage suffered as a result of any person whatsoever placing reliance upon the information contained within this GIS map.

Date: 19-Nov-19

Author: JC

Data Sources: ARTC

Paper: A3

Scale: 1:3,500

Signal Gantry

VicTrack Reserve

Not Assessed

Addition to Project Area

Private Land

Investigation Area

Stage 1 - Concept

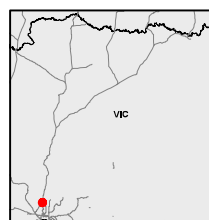
Investigation Area (2018)

Stage 2 - Feasibility

Investigation Area 2019

Project Area

Project Area



**INLAND RAIL** **ARTC**

The Australian Government is delivering Inland Rail through the Australian Rail Track Corporation (ARTC), in partnership with the private sector.





### Tottenham TO Albury

0 50 100 m

Coordinate System: GDA 1994 MGA Zone 55

ARTC makes no representation or warranty and assumes no duty of care or other responsibility to any party as to the completeness, accuracy or suitability of the information contained in this GIS map. The GIS map has been prepared from material provided to ARTC by an external source and ARTC has not taken any steps to verify the completeness, accuracy or suitability of that material. ARTC will not be responsible for any loss or damage suffered as a result of any person whatsoever placing reliance upon the information contained within this GIS map.

Date: 19-Nov-19  
Author: JC  
Data Sources: ARTC

### Study Areas

- Signal Gantry
- VicTrack Reserve
- Not Assessed**
- Private Land

### Investigation Area

Stage 1 - Concept

  Investigation Area (2018)

Stage 2 - Feasibility

  Investigation Area 2019

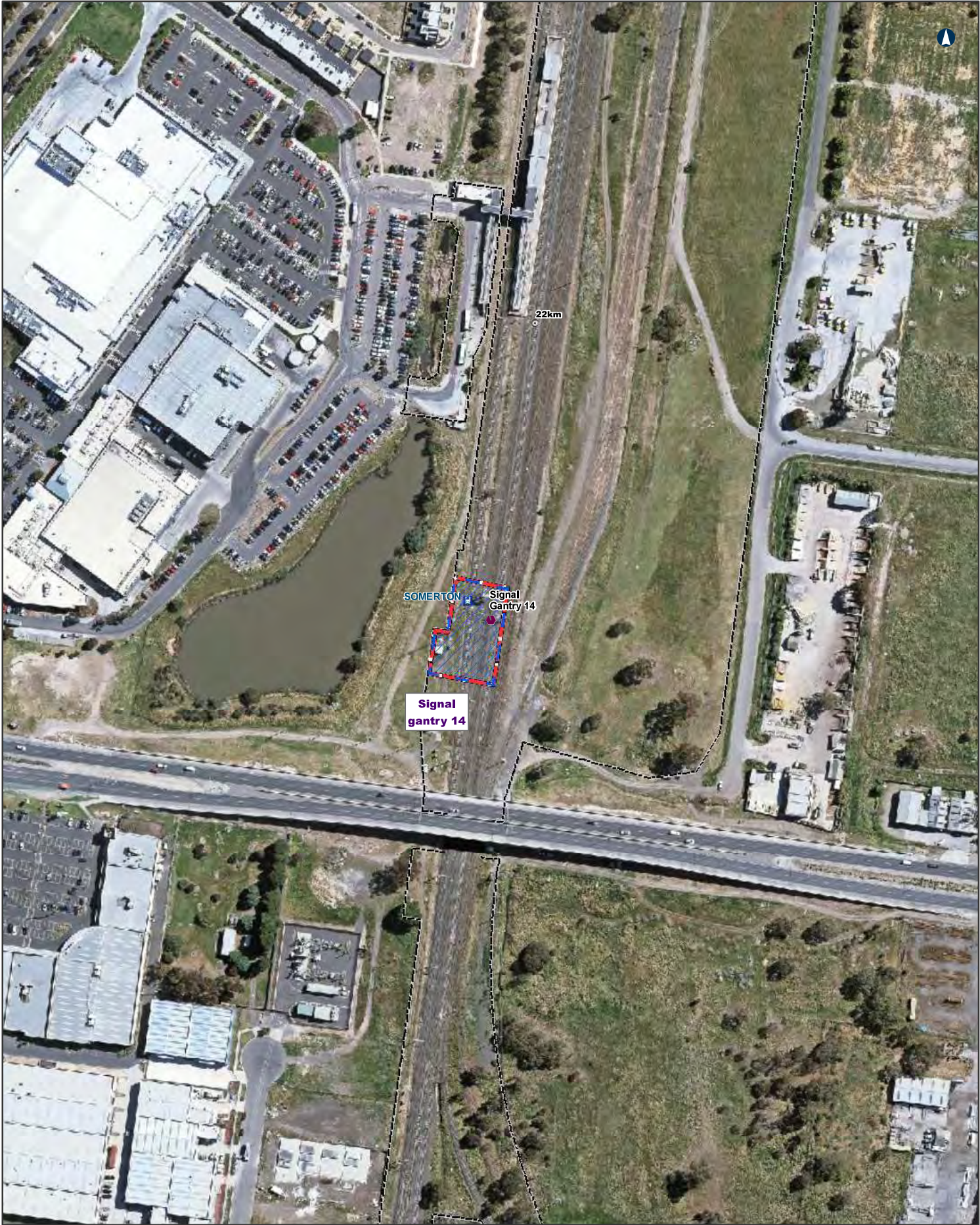
### Project Area

  Project Area

The Australian Government is delivering Inland Rail through the Australian Rail Track Corporation (ARTC), in partnership with the private sector.

MAP 10 OF 34





Tottenham TO Albury

Study Areas

0 30 60  
m

Coordinate System: GDA 1994 MGA Zone 55

ARTC makes no representation or warranty and assumes no duty of care or other responsibility to any party as to the completeness, accuracy or suitability of the information contained in this GIS map. The GIS map has been prepared from material provided to ARTC by an external source and ARTC has not taken any steps to verify the completeness, accuracy or suitability of that material.

ARTC will not be responsible for any loss or damage suffered as a result of any person whatsoever placing reliance upon the information contained within this GIS map.

Date: 19-Nov-19  
Author: JC  
Data Sources: ARTC

Paper: A3  
Scale: 1:2,000

- Signal Gantry
- VicTrack Reserve
- Investigation Area
- Stage 1 - Concept
- Investigation Area (2018)
- Stage 2 - Feasibility
- Investigation Area 2019

Project Area

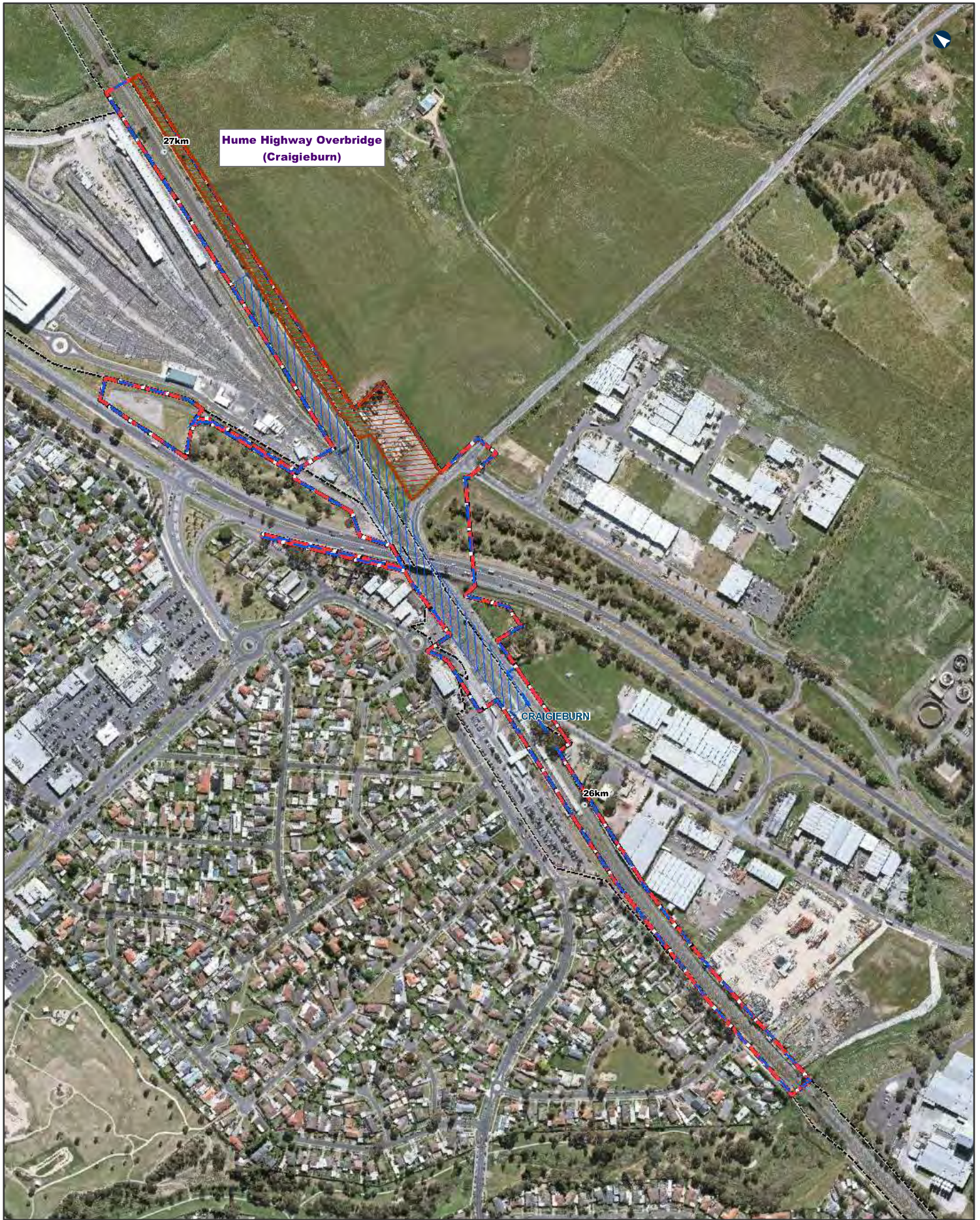
Project Area



INLAND RAIL ARTC

The Australian Government is delivering Inland Rail through the Australian Rail Track Corporation (ARTC), in partnership with the private sector.





## Tottenham TO Albury

## Study Areas

MAP 12 OF 34

0 80 160  
m

Coordinate System: GDA 1994 MGA Zone 55

ARTC makes no representation or warranty and assumes no duty of care or other responsibility to any party as to the completeness, accuracy or suitability of the information contained in this GIS map. The GIS map has been prepared from material provided to ARTC by an external source and ARTC has not taken any steps to verify the completeness, accuracy or suitability of that material. ARTC will not be responsible for any loss or damage suffered as a result of any person whatsoever placing reliance upon the information contained within this GIS map.

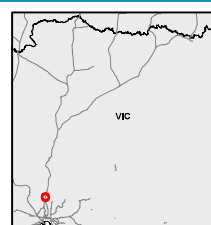
Date: 19-Nov-19  
Author: JC  
Data Sources: ARTC

Paper: A3  
Scale: 1:4,500

- Signal Gantry
- VicTrack Reserve
- Not Assessed
- Private Land
- Investigation Area Stage 1 - Concept
- Investigation Area (2018)
- Stage 2 - Feasibility
- Investigation Area 2019

Project Area

Project Area



**INLAND RAIL** **ARTC**

The Australian Government is delivering Inland Rail through the Australian Rail Track Corporation (ARTC), in partnership with the private sector.





## Tottenham TO Albury

## Study Areas

MAP 13 OF 34

0 30 60  
m

Coordinate System: GDA 1994 MGA Zone 55

ARTC makes no representation or warranty and assumes no duty of care or other responsibility to any party as to the completeness, accuracy or suitability of the information contained in this GIS map. The GIS map has been prepared from material provided to ARTC by an external source and ARTC has not taken any steps to verify the completeness, accuracy or suitability of that material. ARTC will not be responsible for any loss or damage suffered as a result of any person whatsoever placing reliance upon the information contained within this GIS map.

Date: 19-Nov-19

Paper: A3

Author: JC

Scale: 1:2,000

Data Sources: ARTC

Signal Gantry

VicTrack Reserve

Not Assessed

Addition to Project Area

Private Land

Investigation Area

Stage 1 - Concept

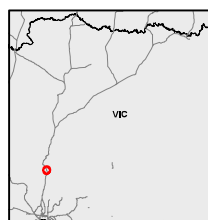
Investigation Area (2018)

Stage 2 - Feasibility

Investigation Area 2019

Project Area

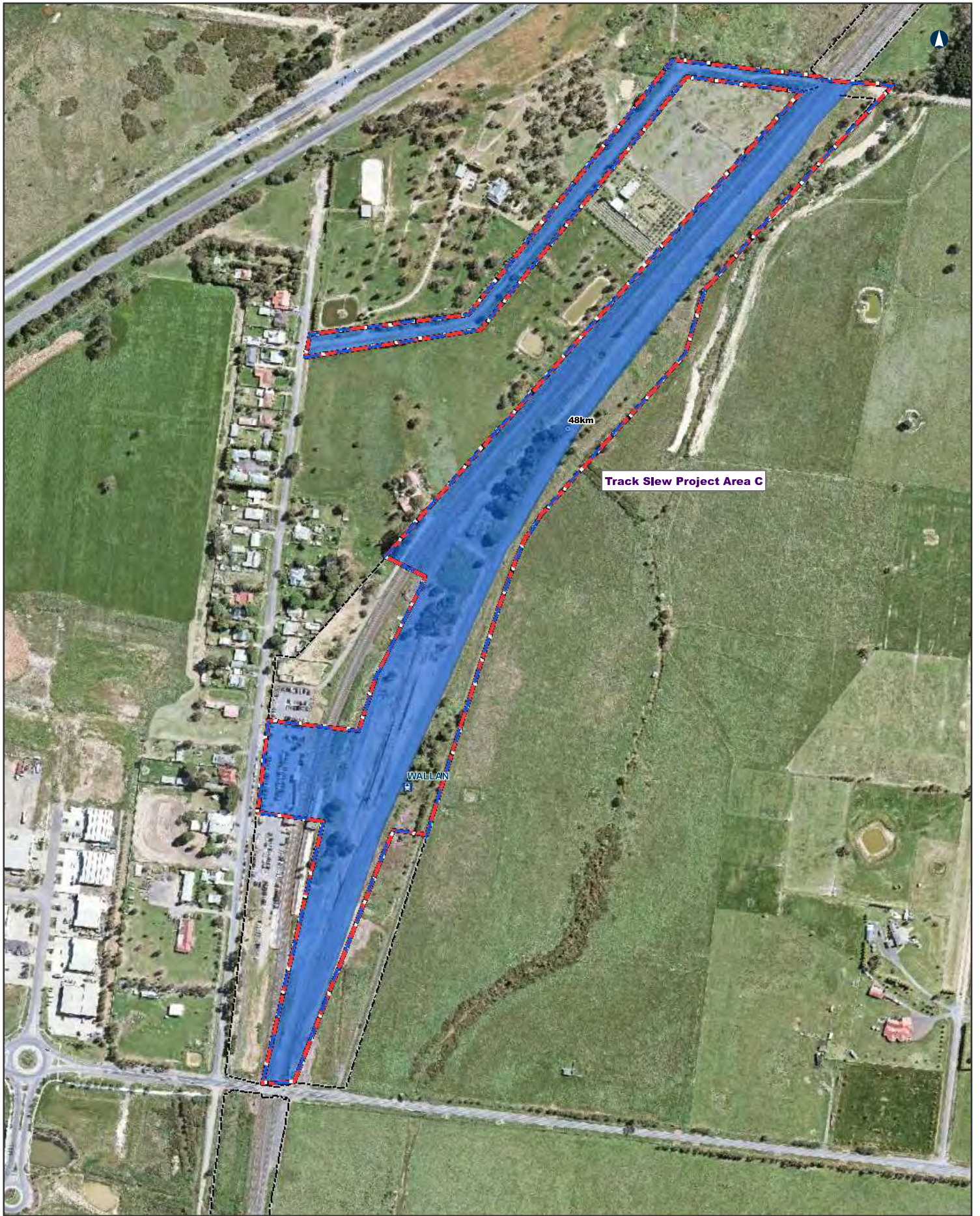
Project Area



**INLAND RAIL** **ARTC**

The Australian Government is delivering Inland Rail through the Australian Rail Track Corporation (ARTC), in partnership with the private sector.





## Tottenham TO Albury

## Study Areas

MAP 14 OF 34

0 60 120  
m

Coordinate System: GDA 1994 MGA Zone 55

ARTC makes no representation or warranty and assumes no duty of care or other responsibility to any party as to the completeness, accuracy or suitability of the information contained in this GIS map. The GIS map has been prepared from material provided to ARTC by an external source and ARTC has not taken any steps to verify the completeness, accuracy or suitability of that material. ARTC will not be responsible for any loss or damage suffered as a result of any person whatsoever placing reliance upon the information contained within this GIS map.

Date: 19-Nov-19

Paper: A3

Author: JC

Scale: 1:3,500

Data Sources: ARTC

Signal Gantry

VicTrack Reserve

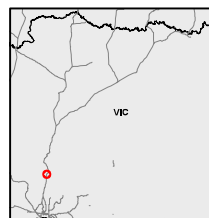
Investigation Area

Stage 1 - Concept

Stage 2 - Feasibility

Investigation Area  
2019

Project Area



**INLAND RAIL** **ARTC**

The Australian Government is delivering Inland Rail through the Australian Rail Track Corporation (ARTC), in partnership with the private sector.





Tottenham TO Albury
Study Areas
MAP 15 OF 34

0 10 20 m

Coordinate System: GDA 1994 MGA Zone 55

ARTC makes no representation or warranty and assumes no duty of care or other responsibility to any party as to the completeness, accuracy or suitability of the information contained in this GIS map. The GIS map has been prepared from material provided to ARTC by an external source and ARTC has not taken any steps to verify the completeness, accuracy or suitability of that material. ARTC will not be responsible for any loss or damage suffered as a result of any person whatsoever placing reliance upon the information contained within this GIS map.

Date: 19-Nov-19  
Author: JC  
Data Sources: ARTC

● Signal Gantry

VicTrack Reserve

Investigation Area (2018)

Investigation Area 2019

**Project Area**

Project Area

Stage 1 - Concept

Stage 2 - Feasibility

**Project Area**

Project Area

**INLAND RAIL**

The Australian Government is delivering Inland Rail through the Australian Rail Track Corporation (ARTC), in partnership with the private sector.

**ARTC**





Tottenham TO Albury

Study Areas

0 10 20 m

Coordinate System: GDA 1994 MGA Zone 55

ARTC makes no representation or warranty and assumes no duty of care or other responsibility to any party as to the completeness, accuracy or suitability of the information contained in this GIS map. The GIS map has been prepared from material provided to ARTC by an external source and ARTC has not taken any steps to verify the completeness, accuracy or suitability of that material.

ARTC will not be responsible for any loss or damage suffered as a result of any person whatsoever placing reliance upon the information contained within this GIS map.

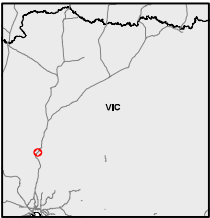
Date: 19-Nov-19  
Author: JC  
Data Sources: ARTC

Paper: A3  
Scale: 1:1,000

- Signal Gantry
- VicTrack Reserve
- Investigation Area
- Stage 1 - Concept
- Investigation Area (2018)
- Stage 2 - Feasibility
- Investigation Area 2019

Project Area

Project Area



INLAND RAIL

ARTC

The Australian Government is delivering Inland Rail through the Australian Rail Track Corporation (ARTC), in partnership with the private sector.





**Tottenham TO Albury**

0 10 20 m

Coordinate System: GDA 1994 MGA Zone 55

ARTC makes no representation or warranty and assumes no duty of care or other responsibility to any party as to the completeness, accuracy or suitability of the information contained in this GIS map. The GIS map has been prepared from material provided to ARTC by an external source and ARTC has not taken any steps to verify the completeness, accuracy or suitability of that material. ARTC will not be responsible for any loss or damage suffered as a result of any person whatsoever placing reliance upon the information contained within this GIS map.

Date: 19-Nov-19  
Author: JC  
Data Sources: ARTC

**Study Areas**

- Signal Gantry
- VicTrack Reserve
- Investigation Area (2018)
- Investigation Area 2019

**Investigation Area**

Stage 1 - Concept

Stage 2 - Feasibility

**Project Area**

Project Area

MAP 17 OF 34

**INLAND RAIL**

**ARTC**

The Australian Government is delivering Inland Rail through the Australian Rail Track Corporation (ARTC), in partnership with the private sector.





## Tottanhan TO Albury

## Study Areas

MAP 18 OF 34

0 40 80  
m

Coordinate System: GDA 1994 MGA Zone 55

ARTC makes no representation or warranty and assumes no duty of care or other responsibility to any party as to the completeness, accuracy or suitability of the information contained in this GIS map. The GIS map has been prepared from material provided to ARTC by an external source and ARTC has not taken any steps to verify the completeness, accuracy or suitability of that material.

ARTC will not be responsible for any loss or damage suffered as a result of any person whatsoever placing reliance upon the information contained within this GIS map.

Date: 19-Nov-19

Paper: A3

Author: JC

Scale: 1:2,500

Data Sources: ARTC

Signal Gantry

VicTrack Reserve

Not Assessed

Addition to Project Area

Private Land

Investigation Area

Stage 1 - Concept

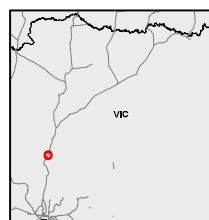
Investigation Area (2018)

Stage 2 - Feasibility

Investigation Area 2019

Project Area

Project Area



**INLAND RAIL** **ARTC**

The Australian Government is delivering Inland Rail through the Australian Rail Track Corporation (ARTC), in partnership with the private sector.





## Tottenham TO Albury

## Study Areas

MAP 19 OF 34

0 50 100  
m

Coordinate System: GDA 1994 MGA Zone 55

ARTC makes no representation or warranty and assumes no duty of care or other responsibility to any party as to the completeness, accuracy or suitability of the information contained in this GIS map. The GIS map has been prepared from material provided to ARTC by an external source and ARTC has not taken any steps to verify the completeness, accuracy or suitability of that material. ARTC will not be responsible for any loss or damage suffered as a result of any person whatsoever placing reliance upon the information contained within this GIS map.

Date: 19-Nov-19

Paper: A3

Author: JC

Scale: 1:3,000

Data Sources: ARTC

Signal Gantry

VicTrack Reserve

Not Assessed

Addition to Project Area

Private Land

Investigation Area

Stage 1 - Concept

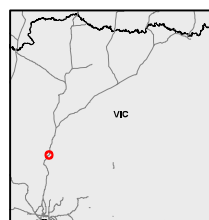
Investigation Area (2018)

Stage 2 - Feasibility

Investigation Area 2019

Project Area

Project Area



**INLAND RAIL** **ARTC**

The Australian Government is delivering Inland Rail through the Australian Rail Track Corporation (ARTC), in partnership with the private sector.





### Tottanhan TO Albury

0 40 80  
m

Coordinate System: GDA 1994 MGA Zone 55

ARTC makes no representation or warranty and assumes no duty of care or other responsibility to any party as to the completeness, accuracy or suitability of the information contained in this GIS map. The GIS map has been prepared from material provided to ARTC by an external source and ARTC has not taken any steps to verify the completeness, accuracy or suitability of that material. ARTC will not be responsible for any loss or damage suffered as a result of any person whatsoever placing reliance upon the information contained within this GIS map.

Date: 19-Nov-19  
Author: JC  
Data Sources: ARTC

### Study Areas

- Signal Gantry
- VicTrack Reserve
- Not Assessed**
- Private Land

### Investigation Area

Stage 1 - Concept

  Investigation Area (2018)

Stage 2 - Feasibility

  Investigation Area 2019

### Project Area

  Project Area

The Australian Government is delivering Inland Rail through the Australian Rail Track Corporation (ARTC), in partnership with the private sector.





## Tottenham TO Albury

## Study Areas

MAP 21 OF 34

0 10 20  
m

Coordinate System: GDA 1994 MGA Zone 55

ARTC makes no representation or warranty and assumes no duty of care or other responsibility to any party as to the completeness, accuracy or suitability of the information contained in this GIS map. The GIS map has been prepared from material provided to ARTC by an external source and ARTC has not taken any steps to verify the completeness, accuracy or suitability of that material. ARTC will not be responsible for any loss or damage suffered as a result of any person whatsoever placing reliance upon the information contained within this GIS map.

Date: 19-Nov-19

Paper: A3

Author: JC

Scale: 1:1,000

Data Sources: ARTC

● Signal Gantry

--- VicTrack Reserve

Investigation Area

Stage 1 - Concept

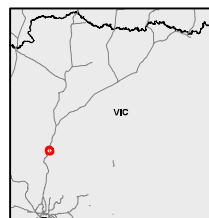
Investigation Area (2018)

Stage 2 - Feasibility

Investigation Area 2019

Project Area

Project Area



**INLAND RAIL** **ARTC**

The Australian Government is delivering Inland Rail through the Australian Rail Track Corporation (ARTC), in partnership with the private sector.





Tottenham TO Albury
Study Areas
MAP 22 OF 34

0 10 20 m

Coordinate System: GDA 1994 MGA Zone 55

ARTC makes no representation or warranty and assumes no duty of care or other responsibility to any party as to the completeness, accuracy or suitability of the information contained in this GIS map. The GIS map has been prepared from material provided to ARTC by an external source and ARTC has not taken any steps to verify the completeness, accuracy or suitability of that material. ARTC will not be responsible for any loss or damage suffered as a result of any person whatsoever placing reliance upon the information contained within this GIS map.

Date: 19-Nov-19  
Author: JC

Paper: A3  
Scale: 1:1,000

Data Sources: ARTC

● Signal Gantry

--- VicTrack Reserve

  Investigation Area (2018)

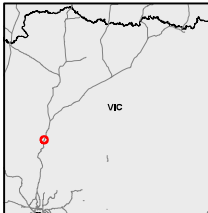
  Investigation Area 2019

Stage 1 - Concept

Stage 2 - Feasibility

Project Area

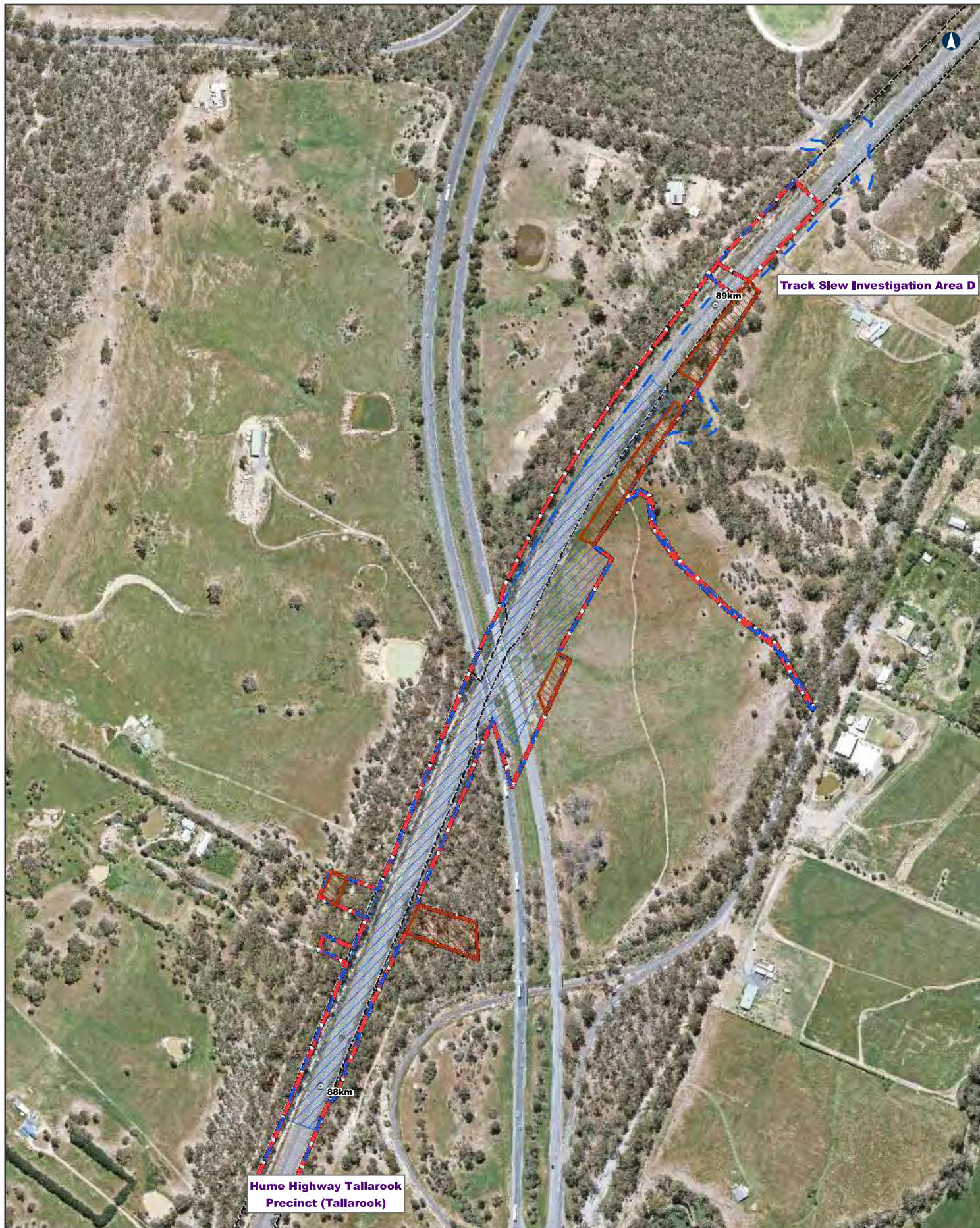
  Project Area



**INLAND RAIL** **ARTC**

The Australian Government is delivering Inland Rail through the Australian Rail Track Corporation (ARTC), in partnership with the private sector.





## Tottenham TO Albury

## Study Areas

MAP 23 OF 34

0 75 150  
m

Coordinate System: GDA 1994 MGA Zone 55

ARTC makes no representation or warranty and assumes no duty of care or other responsibility to any party as to the completeness, accuracy or suitability of the information contained in this GIS map. The GIS map has been prepared from material provided to ARTC by an external source and ARTC has not taken any steps to verify the completeness, accuracy or suitability of that material. ARTC will not be responsible for any loss or damage suffered as a result of any person whatsoever placing reliance upon the information contained within this GIS map.

Date: 19-Nov-19

Paper: A3

Author: JC

Scale: 1:4,000

Data Sources: ARTC

Signal Gantry

VicTrack Reserve

Not Assessed

Private Land

Investigation Area

Stage 1 - Concept

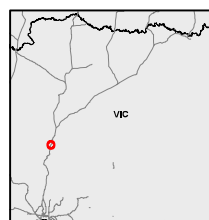
Investigation Area (2018)

Stage 2 - Feasibility

Investigation Area 2019

Project Area

Project Area



**INLAND RAIL** **ARTC**

The Australian Government is delivering Inland Rail through the Australian Rail Track Corporation (ARTC), in partnership with the private sector.





## Tottenham TO Albury

## Study Areas

MAP 24 OF 34

0 70 140 m

Coordinate System: GDA 1994 MGA Zone 55

ARTC makes no representation or warranty and assumes no duty of care or other responsibility to any party as to the completeness, accuracy or suitability of the information contained in this GIS map. The GIS map has been prepared from material provided to ARTC by an external source and ARTC has not taken any steps to verify the completeness, accuracy or suitability of that material. ARTC will not be responsible for any loss or damage suffered as a result of any person whatsoever placing reliance upon the information contained within this GIS map.

Date: 19-Nov-19

Paper: A3

Author: JC

Scale: 1:3,800

Data Sources: ARTC

Signal Gantry

VicTrack Reserve

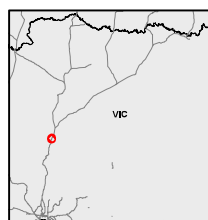
Investigation Area

Stage 1 - Concept

Stage 2 - Feasibility

Investigation Area 2019

Project Area



**INLAND RAIL** **ARTC**

The Australian Government is delivering Inland Rail through the Australian Rail Track Corporation (ARTC), in partnership with the private sector.





## Tottenham TO Albury

## Study Areas

MAP 25 OF 34

0 30 60 m

Coordinate System: GDA 1994 MGA Zone 55

ARTC makes no representation or warranty and assumes no duty of care or other responsibility to any party as to the completeness, accuracy or suitability of the information contained in this GIS map. The GIS map has been prepared from material provided to ARTC by an external source and ARTC has not taken any steps to verify the completeness, accuracy or suitability of that material. ARTC will not be responsible for any loss or damage suffered as a result of any person whatsoever placing reliance upon the information contained within this GIS map.

Date: 19-Nov-19

Author: JC

Data Sources: ARTC

Paper: A3

Scale: 1:2,000

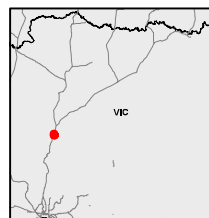
● Signal Gantry  
--- VicTrack Reserve

### Investigation Area

Stage 1 - Concept  
Stage 2 - Feasibility

Investigation Area  
2019

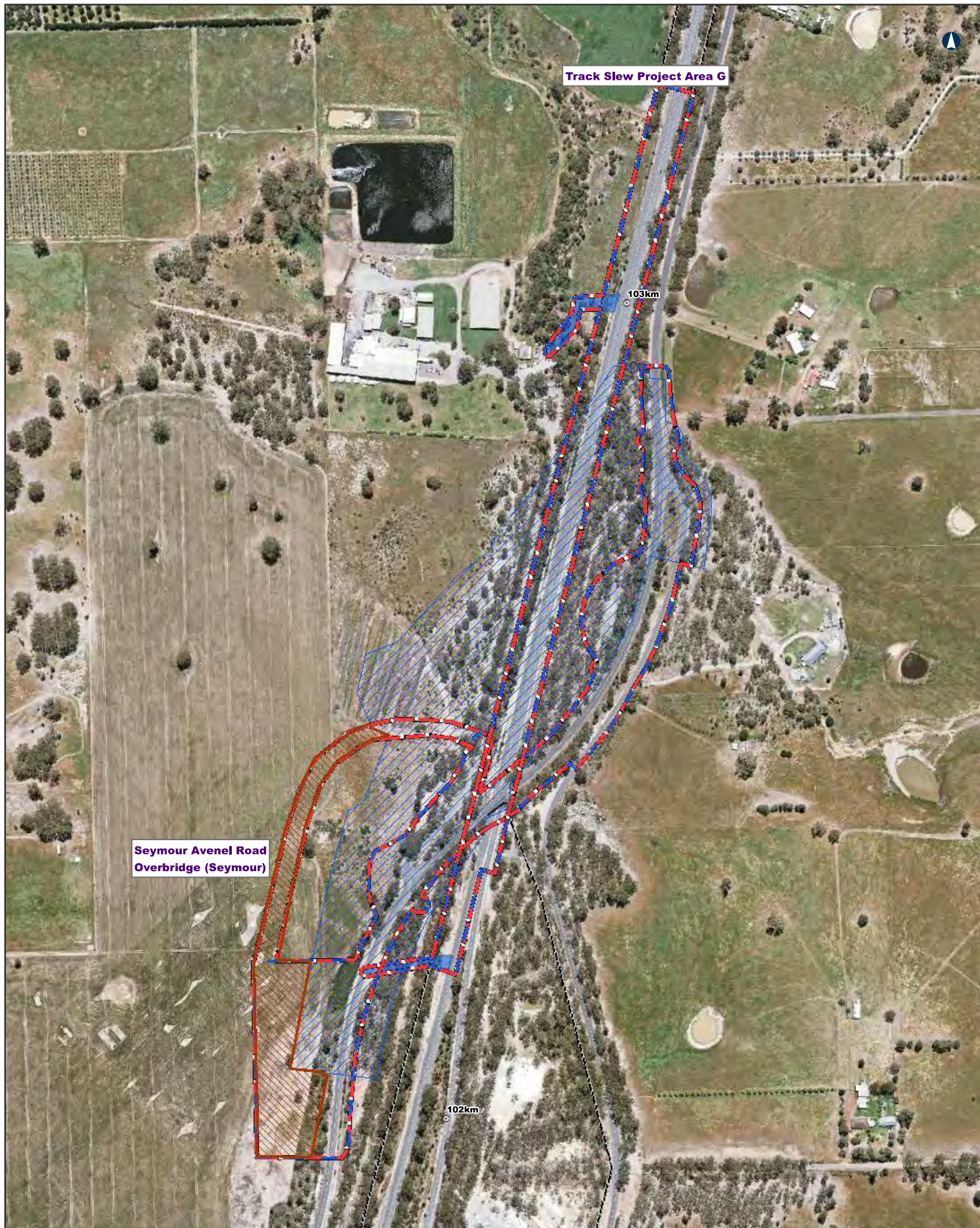
### Project Area



**INLAND RAIL** **ARTC**

The Australian Government is delivering Inland Rail through the Australian Rail Track Corporation (ARTC), in partnership with the private sector.





## Tottenham TO Albury

## Study Areas

MAP 26 OF 34

0 80 160  
m

Coordinate System: GDA 1994 MGA Zone 55

ARTC makes no representation or warranty and assumes no duty of care or other responsibility to any party as to the completeness, accuracy or suitability of the information contained in this GIS map. The GIS map has been prepared from material provided to ARTC by an external source and ARTC has not taken any steps to verify the completeness, accuracy or suitability of that material. ARTC will not be responsible for any loss or damage suffered as a result of any person whatsoever placing reliance upon the information contained within this GIS map.

Date: 19-Nov-19

Paper: A3

Author: JC

Scale: 1:4,200

Data Sources: ARTC

Signal Gantry

VicTrack Reserve

Not Assessed

Private Land

Investigation Area

Stage 1 - Concept

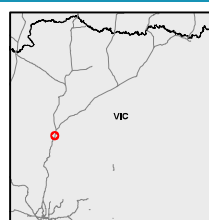
Investigation Area (2018)

Stage 2 - Feasibility

Investigation Area 2019

Project Area

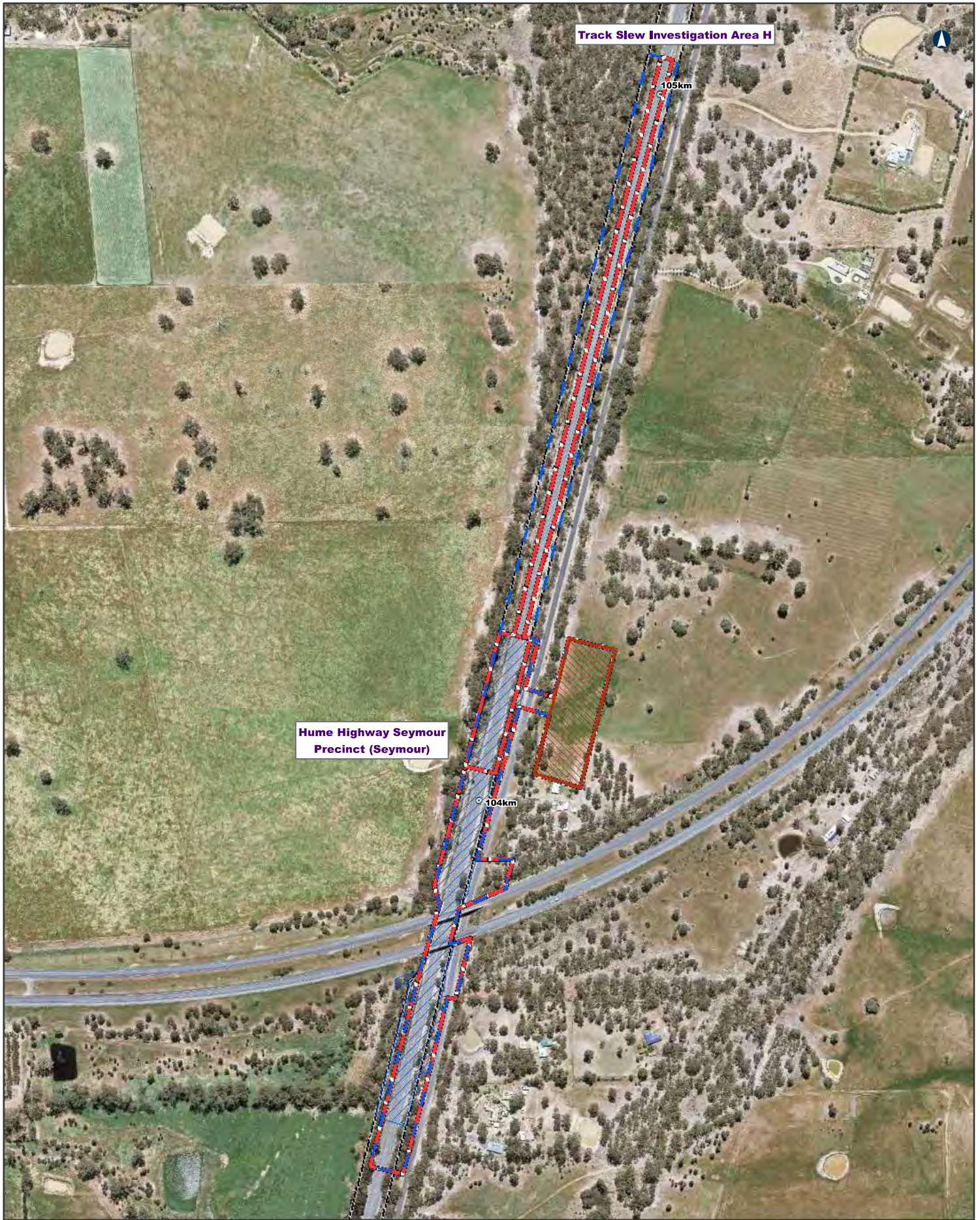
Project Area



**INLAND RAIL** **ARTC**

The Australian Government is delivering Inland Rail through the Australian Rail Track Corporation (ARTC), in partnership with the private sector.





**Tottenham TO Albury**

0 90 180 m

Coordinate System: GDA 1994 MGA Zone 55

ARTC makes no representation or warranty and assumes no duty of care or other responsibility to any party as to the completeness, accuracy or suitability of the information contained in this GIS map. The GIS map has been prepared from material provided to ARTC by an external source and ARTC has not taken any steps to verify the completeness, accuracy or suitability of that material. ARTC will not be responsible for any loss or damage suffered as a result of any person whatsoever placing reliance upon the information contained within this GIS map.

Date: 19-Nov-19  
Author: JC  
Data Sources: ARTC

**Study Areas**

- Signal Gantry
- VicTrack Reserve
- Not Assessed**
- Private Land

**Investigation Area**

Stage 1 - Concept

Investigation Area (2018)

Stage 2 - Feasibility

Investigation Area 2019

**Project Area**

Project Area

MAP 27 OF 34

**INLAND RAIL**

**ARTC**

The Australian Government is delivering Inland Rail through the Australian Rail Track Corporation (ARTC), in partnership with the private sector.





**Track Slew Investigation Area I**

**Tottenham TO Albury**

**Study Areas**

MAP 28 OF 34

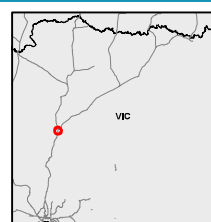
0 75 150 m

Coordinate System: GDA 1994 MGA Zone 55

ARTC makes no representation or warranty and assumes no duty of care or other responsibility to any party as to the completeness, accuracy or suitability of the information contained in this GIS map. The GIS map has been prepared from material provided to ARTC by an external source and ARTC has not taken any steps to verify the completeness, accuracy or suitability of that material. ARTC will not be responsible for any loss or damage suffered as a result of any person whatsoever placing reliance upon the information contained within this GIS map.

Date: 19-Nov-19      Paper: A3  
 Author: JC              Scale: 1:4,000  
 Data Sources: ARTC

- Signal Gantry
- VicTrack Reserve
- Investigation Area
- Stage 1 - Concept
- Stage 2 - Feasibility
- Investigation Area 2019
- Project Area



**INLAND RAIL** **ARTC**

The Australian Government is delivering Inland Rail through the Australian Rail Track Corporation (ARTC), in partnership with the private sector.





## Tottenham TO Albury

## Study Areas

MAP 29 OF 34

0 40 80  
m

Coordinate System: GDA 1994 MGA Zone 55

ARTC makes no representation or warranty and assumes no duty of care or other responsibility to any party as to the completeness, accuracy or suitability of the information contained in this GIS map. The GIS map has been prepared from material provided to ARTC by an external source and ARTC has not taken any steps to verify the completeness, accuracy or suitability of that material. ARTC will not be responsible for any loss or damage suffered as a result of any person whatsoever placing reliance upon the information contained within this GIS map.

Date: 19-Nov-19

Paper: A3

Author: JC

Scale: 1:2,500

Data Sources: ARTC

Signal Gantry

VicTrack Reserve

Not Assessed

Private Land

Investigation Area

Stage 1 - Concept

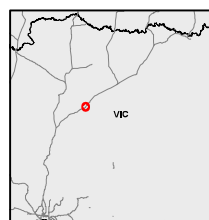
Investigation Area (2018)

Stage 2 - Feasibility

Investigation Area 2019

Project Area

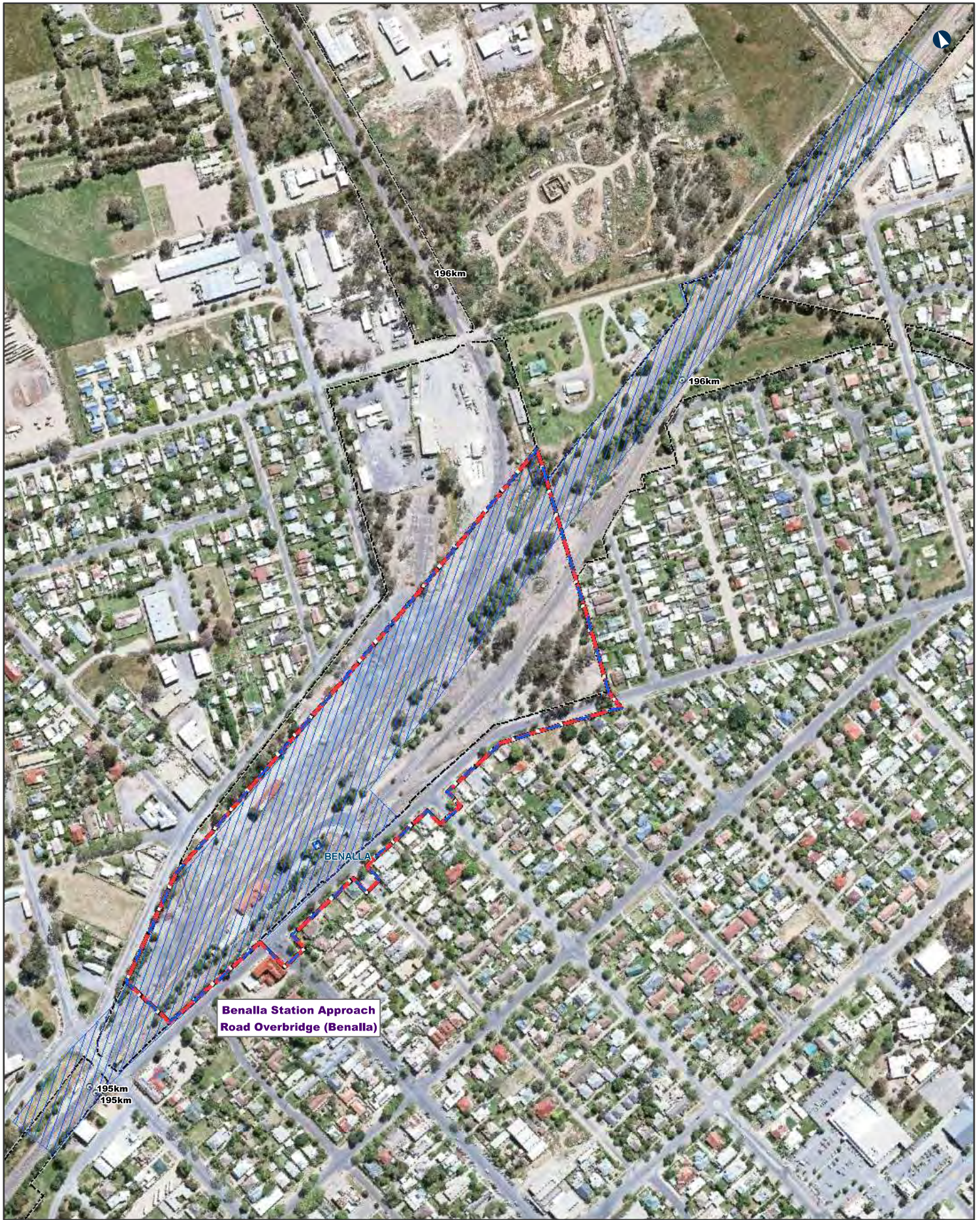
Project Area



**INLAND RAIL** **ARTC**

The Australian Government is delivering Inland Rail through the Australian Rail Track Corporation (ARTC), in partnership with the private sector.





## Tottenham TO Albury

## Study Areas

MAP 30 OF 34

0 70 140 m

Coordinate System: GDA 1994 MGA Zone 55

ARTC makes no representation or warranty and assumes no duty of care or other responsibility to any party as to the completeness, accuracy or suitability of the information contained in this GIS map. The GIS map has been prepared from material provided to ARTC by an external source and ARTC has not taken any steps to verify the completeness, accuracy or suitability of that material. ARTC will not be responsible for any loss or damage suffered as a result of any person whatsoever placing reliance upon the information contained within this GIS map.

Date: 19-Nov-19

Paper: A3

Author: JC

Scale: 1:3,800

Data Sources: ARTC

Signal Gantry

VicTrack Reserve

Investigation Area

Stage 1 - Concept

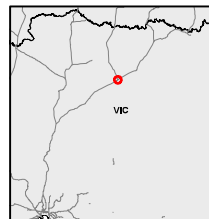
Investigation Area (2018)

Stage 2 - Feasibility

Investigation Area 2019

Project Area

Project Area



**INLAND RAIL** **ARTC**

The Australian Government is delivering Inland Rail through the Australian Rail Track Corporation (ARTC), in partnership with the private sector.





## Tottenham TO Albury

## Study Areas

MAP 31 OF 34

0 75 150  
m

Coordinate System: GDA 1994 MGA Zone 55

ARTC makes no representation or warranty and assumes no duty of care or other responsibility to any party as to the completeness, accuracy or suitability of the information contained in this GIS map. The GIS map has been prepared from material provided to ARTC by an external source and ARTC has not taken any steps to verify the completeness, accuracy or suitability of that material. ARTC will not be responsible for any loss or damage suffered as a result of any person whatsoever placing reliance upon the information contained within this GIS map.

Date: 19-Nov-19

Author: JC

Data Sources: ARTC

Paper: A3

Scale: 1:4,000

Signal Gantry

VicTrack Reserve

Not Assessed

Addition to Project Area

Investigation Area

Stage 1 - Concept

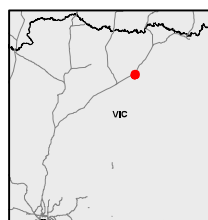
Investigation Area (2018)

Stage 2 - Feasibility

Investigation Area 2019

Project Area

Project Area



**INLAND RAIL** **ARTC**

The Australian Government is delivering Inland Rail through the Australian Rail Track Corporation (ARTC), in partnership with the private sector.





## Tottenham TO Albury

## Study Areas

MAP 32 OF 34

0 60 120 m

Coordinate System: GDA 1994 MGA Zone 55

ARTC makes no representation or warranty and assumes no duty of care or other responsibility to any party as to the completeness, accuracy or suitability of the information contained in this GIS map. The GIS map has been prepared from material provided to ARTC by an external source and ARTC has not taken any steps to verify the completeness, accuracy or suitability of that material. ARTC will not be responsible for any loss or damage suffered as a result of any person whatsoever placing reliance upon the information contained within this GIS map.

Date: 19-Nov-19

Paper: A3

Author: JC

Scale: 1:3,500

Data Sources: ARTC

- Signal Gantry
- VicTrack Reserve
- Not Assessed**
- ▨ Private Land

### Investigation Area

Stage 1 - Concept

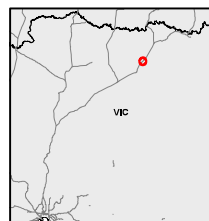
▨ Investigation Area (2018)

Stage 2 - Feasibility

▨ Investigation Area 2019

### Project Area

▨ Project Area



**INLAND RAIL** **ARTC**

The Australian Government is delivering Inland Rail through the Australian Rail Track Corporation (ARTC), in partnership with the private sector.





**Murray Valley Highway  
Overbridge (Barnawartha North)**

## Tottenham TO Albury

## Study Areas

MAP 33 OF 34

0 90 180  
m

Coordinate System: GDA 1994 MGA Zone 55

ARTC makes no representation or warranty and assumes no duty of care or other responsibility to any party as to the completeness, accuracy or suitability of the information contained in this GIS map. The GIS map has been prepared from material provided to ARTC by an external source and ARTC has not taken any steps to verify the completeness, accuracy or suitability of that material. ARTC will not be responsible for any loss or damage suffered as a result of any person whatsoever placing reliance upon the information contained within this GIS map.

Date: 19-Nov-19

Author: JC

Data Sources: ARTC

Paper: A3

Scale: 1:5,000

● Signal Gantry

--- VicTrack Reserve

**Not Assessed**

■ Addition to Project Area

■ Private Land

**Investigation Area**

Stage 1 - Concept

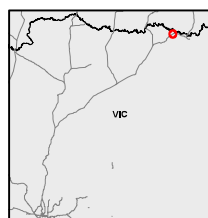
■ Investigation Area (2018)

Stage 2 - Feasibility

■ Investigation Area 2019

**Project Area**

■ Project Area



**INLAND  
RAIL** **ARTC**

The Australian Government is delivering Inland Rail through the Australian Rail Track Corporation (ARTC), in partnership with the private sector.





## Tottenham TO Albury

## Study Areas

MAP 34 OF 34

0 50 100  
m

Coordinate System: GDA 1994 MGA Zone 55

ARTC makes no representation or warranty and assumes no duty of care or other responsibility to any party as to the completeness, accuracy or suitability of the information contained in this GIS map. The GIS map has been prepared from material provided to ARTC by an external source and ARTC has not taken any steps to verify the completeness, accuracy or suitability of that material. ARTC will not be responsible for any loss or damage suffered as a result of any person whatsoever placing reliance upon the information contained within this GIS map.

Date: 19-Nov-19

Paper: A3

Author: JC

Scale: 1:3,000

Data Sources: ARTC

Signal Gantry

VicTrack Reserve

Investigation Area

Stage 1 - Concept

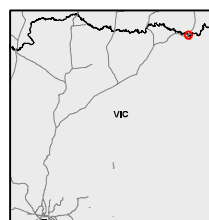
Investigation Area (2018)

Stage 2 - Feasibility

Investigation Area 2019

Project Area

Project Area



**INLAND RAIL** **ARTC**

The Australian Government is delivering Inland Rail through the Australian Rail Track Corporation (ARTC), in partnership with the private sector.



# Appendix B

Desktop Assessment  
Results





Investigation area name	NatureKit modelled vegetation community	Threatened flora species	Number of flora records (date of latest record)	Threatened fauna species	Number of fauna records (date of latest record)	Sites of biological significance
McIntyre Road (Sunshine)	Box Ironbark Forest Creekline Grassy Woodland Floodplain Riparian Woodland Plains Grassy Woodland	Austral Toadflax <sup>L, VU</sup> Basalt Sun-orchid <sup>L</sup> Brittle Greenhood <sup>L</sup> Button Winklewort <sup>L, EN</sup> Cut-leaf Burr-daisy <sup>L</sup> Fragrant Leek-orchid <sup>L, EN</sup> Large-flower Crane's-bill <sup>L</sup> Large-fruit Yellow-gum <sup>L</sup> Large-headed Fireweed <sup>L, VU</sup> Matted Flax-lily <sup>L, EN</sup> Purple Diuris <sup>L</sup> Small Golden Moths <sup>L, EN</sup> Small Milkwort <sup>L</sup> Spiny Rice-flower <sup>L, CR</sup> Sunshine Diuris <sup>L, EN</sup> Swamp Diuris <sup>L</sup> Tough Scurf-pea <sup>L</sup>	1 (1904) 8 (1953) 7 (1939) 28 (2015) 1 (1991) 13 (1962) 1 (2009) 1 (1996) 7 (2015) 24 (2011) 1 (1971) 14 (1996) 15 (2014) 410 (2017) 22 (2009) 6 (1934) 15 (2014)	Australian Grayling <sup>L, VU</sup> Australian Little Bittern <sup>L</sup> Australian Mudfish <sup>L</sup> Baillon's Crake <sup>L</sup> Brown Toadlet <sup>L</sup> Caspian Tern <sup>L</sup> Eastern Great Egret <sup>L</sup> Eltham Copper Butterfly <sup>L, EN</sup> Golden Sun Moth <sup>L, CR</sup> Grey Goshawk <sup>L</sup> Growling Grass Frog <sup>L, VU</sup> Lewin's Rail <sup>L</sup> Macquarie Perch <sup>L, EN</sup> Plains Wanderer <sup>L, CR</sup> Striped Legless Lizard <sup>L, VU</sup> Swift Parrot <sup>L, CR</sup> Trout Cod <sup>L, EN</sup> Yellow-bellied Shearwater Bat <sup>L</sup>	6 (2011) 1 (1980) 1 (2008) 3 (2003) 1 (1988) 3 (1986) 2 (1981) 1 (1920) 8 (2010) 1 (2000) 22 (2013) 2 (1988) 3 (1970) 2 (1956) 368 (2017) 1 (2000) 1 (1908) 1 (2000)	3546 St Albans Rail Reserve (Grass PPKE006) (N) 5272 Kororoit Creek Central - Deer Park (R) 5104 Maribymong River Environs - Calder Fwy to Sydenham Park (R) 3598 Sunshine Rail Reserve (Grass PPSU009) (N) 4193 Mobil Service Station (Grass VPME07) (S) 5267 Brimbank Park (R) 3597 St Albans Road Reserve (Grass PPSU008) (R) 3591 Braybrook Rail Reserve (Grass PPSU002) (S) 3554 Taylors Creek Shrubland Private (Grass PPKE014) (R) 3547 Steele Creek Grassland (Grass PPKE007) (R) 3286 Iramoo Grassland Reserve - Former Albion Explosives Factory (Grass AMBN01) (N) 5273 Jones Creek Grasslands (S) 4613 Reid Street Grassland, Ardeer (S) 5269 Kororoit escarpments - Deer Park (R) 5268 Taylors Creek - Keilor (R) 3596 O'Brien Park (Grass PPSU007) (L) 5103 Maribymong River Edge - Steele Creek to Western Ring Road (R) 5267 Brimbank Park (R)



Investigation area name	NatureKit modelled vegetation community	Threatened flora species	Number of flora records (date of latest record)	Threatened fauna species	Number of fauna records (date of latest record)	Sites of biological significance
						3543 Keilor Cemetery (Grass PPKE003) (R) 3599 Sunshine Tip Grassland (Grass PPSU010) (S)
Keilor Park Drive	None	Austral Toadflax <sup>L, VU</sup> Basalt Sun-orchid <sup>L</sup> Brittle Greenhood <sup>L</sup> Button Winklewort <sup>L, EN</sup> Fragrant Leek-orchid <sup>L, EN</sup> Large-fruit Yellow-gum <sup>L</sup> Large-headed Fireweed <sup>L, VU</sup> Matted Flax-lily <sup>L, EN</sup> Small Golden Moths <sup>L, EN</sup> Small Milkwort <sup>L</sup>	1 (1904) 8 (1953) 2 (1931) 27 (2015) 9 (1962) 1 (1996) 6 (2015) 23 (2001) 13 (1962) 7 (1962)	Australian Grayling <sup>L, VU</sup> Australian Mudfish <sup>L</sup> Baillon's Crake <sup>L</sup> Brown Toadlet <sup>L</sup> Caspian Tern <sup>L</sup> Eastern Great Egret <sup>L</sup> Eltham Copper Butterfly <sup>L, EN</sup> Golden Sun Moth <sup>L, CR</sup> Grey Goshawk <sup>L</sup> Growling Grass Frog <sup>L, VU</sup>	7 (2015) 1 (2008) 1 (1982) 1 (1988) 5 (1988) 2 (1980) 1 (1920) 1 (1906) 1 (2000) 6 (2013)	3546 St Albans Rail Reserve (Grass PPKE006) (N) 5104 Maribymong River Environs - Calder Fwy to Sydenham Park (R) 5267 Brimbank Park (R) 3597 St Albans Road Reserve (Grass PPSU008) (R) 5088 Dry Creek Shrubland (S)



Investigation area name	NatureKit modelled vegetation community	Threatened flora species	Number of flora records (date of latest record)	Threatened fauna species	Number of fauna records (date of latest record)	Sites of biological significance
Signal gantry at 19,232 km	None	Spiny Rice-flower <sup>L, OR</sup> Sunshine Diuris <sup>L, EN</sup> Swamp Diuris <sup>L</sup> Tough Scurf-pea <sup>L</sup>	384 (2015) 7 (1974) 5 (1934) 5 (2010)	Lewin's Rail <sup>L</sup> Australian Little Bittern <sup>L</sup> Macquarie Perch <sup>L, EN</sup> Murray Cod <sup>L, VU</sup> Plains Wanderer <sup>L, OR</sup> Silver Perch <sup>L, OR</sup> Striped Legless Lizard <sup>L, VU</sup> Swift Parrot <sup>L, OR</sup> Trout Cod <sup>L, EN</sup>	2 (1988) 1 (1980) 1 (1908) 2 (1981) 3 (1948) 1 (1981) 65 (2017) 1 (2000) 1 (1908)	3554 Taylors Creek Shrubland Private (Grass PPKE014) (R) 3547 Steele Creek Grassland (Grass PPKE007) (R) 3286 Iramoo Grassland Reserve - Former Albion Explosives Factory (Grass AMBN01) (N) 5273 Jones Creek Grasslands (S) 4613 Reid Street Grassland, Ardeer (S) 5268 Taylors Creek - Keilor (R) 5103 Maribymong River Edge - Steele Creek to Western Ring Road (R) 3543 Keilor Cemetery (Grass PPKE003) (R) 3599 Sunshine Tip Grassland (Grass PPSU010) (S)
		Austral Toadflax <sup>L, VU</sup> Basalt Sun-orchid <sup>L</sup> Button Winkwort <sup>L, EN</sup> Fragrant Leek-orchid <sup>L, EN</sup> Large-fruit Yellow-gum <sup>L</sup> Matted Flax-lily <sup>L, EN</sup> Small Milkwort <sup>L</sup> Spiny Rice-flower <sup>L, OR</sup> Tough Scurf-pea <sup>L</sup>	1 (1904) 2 (1926) 6 (2006) 5 (1939) 1 (1996) 13 (2001) 9 (2014) 327 (2015) 4 (2010)	Australian Grayling <sup>L, VU</sup> Australian Mudfish <sup>L</sup> Baillon's Crake <sup>L</sup> Brown Toadlet <sup>L</sup> Caspien Tern <sup>L</sup> Eastern Great Egret <sup>L</sup> Eltham Copper Butterfly <sup>L, EN</sup> Golden Sun Moth <sup>L, OR</sup> Grey Goshawk <sup>L</sup> Growling Grass Frog <sup>L, VU</sup> Lewin's Rail <sup>L</sup> Australian Little Bittern <sup>L</sup> Macquarie Perch <sup>L, EN</sup>	7 (2015) 1 (2008) 2 (1982) 1 (1988) 3 (1986) 2 (1980) 1 (1920) 1 (1906) 1 (2000) 7 (2013) 2 (1988) 1 (1980) 1 (1908)	5104 Maribymong River Environs - Calder Fwy to Sydenham Park (R) 5267 Brimbank Park (R) 3597 St Albans Road Reserve (Grass PPSU008) (R) 5088 Dry Creek Shrubland, (S) 3554 Taylors Creek Shrubland Private (Grass PPKE014) (R) 3547 Steele Creek Grassland (Grass PPKE007) (R) 5268 Taylors Creek - Keilor(R)



Investigation area name	NatureKit modelled vegetation community	Threatened flora species	Number of flora records (date of latest record)	Threatened fauna species	Number of fauna records (date of latest record)	Sites of biological significance
Calder Freeway	Plains Grassland Stream Bank Shrubland	Austral Toadflax <sup>L, VU</sup> Basalt Sun-orchid <sup>L</sup> Large-flower Crane's-bill <sup>L</sup> Large-fruit Yellow-gum <sup>L</sup> Matted Flax-lily <sup>L, EN</sup> Spiny Rice-flower <sup>L, OR</sup> Tough Scurf-pea <sup>L</sup>	1 (1904) 2 (1926) 1 (2011) 1 (1996) 3 (2010) 321 (2013) 5 (2011)	Murray Cod <sup>L, VU</sup> Plains Wanderer <sup>L, OR</sup> Silver Perch <sup>L, OR</sup> Striped Legless Lizard <sup>L, VU</sup> Trout Cod <sup>L, EN</sup>	2 (1981) 3 (1948) 1 (1981) 13 (2017) 1 (1908)	Maribymong River Edge - Steele Creek to Western Ring Road (R) Kellor Cemetery (Grass PPKE003) (R) Sunshine Tip Grassland (Grass PPSU010) (S)
Westfield Drive and Tullamarine Freeway Precinct	Plains Grassland	Large-flower Crane's-bill <sup>L</sup> Large-fruit Yellow-gum <sup>L</sup> Matted Flax-lily <sup>L, EN</sup> Spiny Rice-flower <sup>L, OR</sup> Tough Scurf-pea <sup>L</sup>	4 (2016) 1 (1996) 6 (2012) 25 (2013) 3 (2011)	Australian Grayling <sup>L, VU</sup> Australian Little Bittern <sup>L</sup> Australian Mudfish <sup>L</sup> Baillon's Crake <sup>L</sup> Brown Toadlet <sup>L</sup> Caspian Tern <sup>L</sup>	7 (2015) 1 (1980) 1 (2008) 1 (2008) 2 (2008) 1 (1988) 4 (1986)	Tullamarine Retarding Basin (Wright St), Westmeadows (R) Napier Park (Grass PPES001) (L) Woodlands Historic Park (Gellibrand Hill) (S)



Investigation area name	NatureKit modelled vegetation community	Threatened flora species	Number of flora records (date of latest record)	Threatened fauna species	Number of fauna records (date of latest record)	Sites of biological significance
				Curlew Sandpiper <sup>OR</sup> Eastern Curlew <sup>OR</sup> Eastern Great Egret <sup>L</sup> Eltham Copper Butterfly <sup>L, EN</sup> Fairy Tern <sup>L, VU</sup> Golden Sun Moth <sup>L, CR</sup> Grassland Earless Dragon <sup>L, EN</sup> Grey-headed Flying-fox <sup>L, VU</sup> Growling Grass Frog <sup>L, VU</sup> Intermediate Egret <sup>L</sup> Lesser Sandplover <sup>EN</sup> Lewin's Rail <sup>L</sup> Little Egret <sup>L</sup> Murray Cod <sup>L, VU</sup> Plains Wanderer <sup>L, CR</sup> Silver Perch <sup>L, CR</sup> Striped Legless Lizard <sup>L, VU</sup> Turquoise Parrot <sup>L</sup>	1 (1977) 1 (1977) 29 (2008) 2 (1922) 1 (1977) 1121 (2017) 1 (1884) 4 (2017) 30 (2016) 5 (1980) 1 (1978) 2 (1988) 1 (1977) 2 (1981) 3 (1948) 1 (1981) 5 (2011) 1 (2000)	5198 Broadmeadows Valley Park - Bracken, Glycine, Pimelea & Poa sites (R) 5194 Broadmeadows Valley Park - Stylidium & Themeda sites (S) 5104 Maribymong River Environs - Calder Fwy to Sydenham Park (R) 5267 Brimbank Park (R) 5194 Broadmeadows Valley Park - Stylidium & Themeda sites (S) 5088 Dry Creek Shrubland (S) 3554 Taylors Creek Shrubland Private (Grass PPKE014) (R) 3547 Steele Creek Grassland (Grass PPKE007) (R) 4188 Maygar Army Barracks (Grass VPME02) Yet to be determined 5103 Maribymong River Edge - Steele Creek to Western Ring Road (R) 5179 Attwood Creek, Grey Box Stand, Attwood (R) 5182 Banksia Gardens Grassland (R) 3543 Keilor Cemetery (Grass PPKE003) (R)
Signal gantry at 24,906 km	None	Large-flower Crane's-bill <sup>L</sup> Leafy Greenhood <sup>L</sup>	9 (2016) 1 (1770)	Australian Mudfish <sup>L</sup> Baillon's Crane <sup>L</sup> Bar-tailed Godwit <sup>VU</sup> Brown Toadlet <sup>L</sup>	1 (2008) 1 (2008) 1 (1977) 1 (1994)	5185 Tullamarine Retarding Basin (Wright St), Westmeadows (R) 3537 Napier Park (Grass PPES001) (L)



Investigation area name	NatureKit modelled vegetation community	Threatened flora species	Number of flora records (date of latest record)	Threatened fauna species	Number of fauna records (date of latest record)	Sites of biological significance
Track Slew 1, Investigation Area A	None	Matted Flax-lily <sup>L, EN</sup> Tough Scurf-pea <sup>L</sup>	6 (2012) 2 (2011)	Caspian Tern <sup>L</sup> Curlew Sandpiper <sup>OR</sup> Eastern Curlew <sup>OR</sup> Eastern Great Egret <sup>L</sup> Eastern Quoll <sup>L, EN</sup> Eltham Copper Butterfly <sup>L, EN</sup> Fairy Tern <sup>L, VU</sup> Golden Sun Moth <sup>L, OR</sup> Grassland Earless Dragon <sup>L, EN</sup> Grey-headed Flying-fox <sup>L, VU</sup> Growling Grass Frog <sup>L, VU</sup> Intermediate Egret <sup>L</sup> Lesser Sandplover <sup>EN</sup> Little Egret <sup>L</sup> Plains Wanderer <sup>L, OR</sup> Regent Honeyeater <sup>L, OR</sup> Striped Legless Lizard <sup>L, VU</sup> Swift Parrot <sup>L, OR</sup> Turquoise Parrot <sup>L</sup>	1 (1981) 1 (1977) 1 (1977) 27 (2008) 1 (1902) 1 (1922) 1 (1977) 1952 (2017) 1 (1884) 5 (2017) 16 (2016) 5 (1980) 1 (1978) 1 (1977) 2 (1948) 1 (1971) 3 (2011) 6 (1981) 1 (2000)	5198 Broadmeadows Valley Park - Bracken, Glycine, Pimelea & Poa sites (R)  5194 Broadmeadows Valley Park - Stylidium & Themeda sites (S)  4188 Maygar Army Barracks (Grass VPME02) Yet to be determined  5179 Attwood Creek, Grey Box Stand, Attwood (R)  5183 Maygar Grasslands (R)  5182 Banksia Gardens Grassland (R)  3543 Kellor Cemetery (Grass PPKE003) (R)
		Large-flower Crane's-bill <sup>L</sup> Leafy Greenhood <sup>L</sup> Matted Flax-lily <sup>L, EN</sup> Tough Scurf-pea <sup>L</sup>	9 (2016) 1 (1770) 6 (2012) 2 (2011)	Australian Mudfish <sup>L</sup> Baillon's Crane <sup>L</sup> Bar-tailed Godwit <sup>VU</sup> Brown Toadlet <sup>L</sup> Caspian Tern <sup>L</sup> Curlew Sandpiper <sup>OR</sup> Eastern Curlew <sup>OR</sup> Eastern Great Egret <sup>L</sup> Eastern Quoll <sup>L, EN</sup> Eltham Copper Butterfly <sup>L, EN</sup> Fairy Tern <sup>L, VU</sup> Golden Sun Moth <sup>L, OR</sup>	1 (2008) 1 (2008) 1 (1977) 1 (1994) 1 (1981) 1 (1977) 1 (1977) 27 (2008) 1 (1902) 2 (1922) 1 (1977) 2183 (2017)	5185 Tullamarine Retarding Basin (Wright St), Westmeadows (R)  3537 Napier Park (Grass PPES001) (L)  5198 Broadmeadows Valley Park - Bracken, Glycine, Pimelea & Poa sites (R)  5194 Broadmeadows Valley Park - Stylidium & Themeda sites (S)  5104 Maribymong River Environs - Calder Fwy to Sydenham Park (R)



Investigation area name	NatureKit modelled vegetation community	Threatened flora species	Number of flora records (date of latest record)	Threatened fauna species	Number of fauna records (date of latest record)	Sites of biological significance
				Grassland Earless Dragon <sup>L, EN</sup> Grey-headed Flying-fox <sup>L, VU</sup> Growling Grass Frog <sup>L, VU</sup> Intermediate Egret <sup>L</sup> Lesser Sandplover <sup>EN</sup> Little Egret <sup>L</sup> Plains Wanderer <sup>L, CR</sup> Regent Honeyeater <sup>L, CR</sup> Striped Legless Lizard <sup>L, VU</sup> Swift Parrot <sup>L, CR</sup> Turquoise Parrot <sup>L</sup>	1 (1884) 5 (2017) 23 (2016) 5 (1980) 1 (1978) 1 (1977) 3 (1948) 1 (1971) 4 (2011) 6 (1981) 1 (2000)	5088 Dry Creek Shrubland (S) 4188 Maygar Army Barracks (Grass VPME02) Yet to be determined 5179 Attwood Creek, Grey Box Stand, Attwood (R) 5183 Maygar Grasslands (R) 5182 Banksia Gardens Grassland (R) 5267 Brimbank Park (R) 3543 Kellor Cemetery (Grass PPKE003) (R)
Belair Avenue	Granitic Hills Woodland Grassy Woodland Valley Grassy Forest/Grassy Woodland Complex	Large-flower Crane's-bill <sup>L</sup> Leafy Greenhood <sup>L</sup> Matted Flax-lily <sup>L, EN</sup> Purple Diuris <sup>L</sup> Tough Scurf-pea <sup>L</sup>	9 (2016) 1 (1770) 6 (2012) 1 (1932) 2 (2011)	Bailion's Crane <sup>L</sup> Bar-tailed Godwit <sup>VU</sup> Brown Toadlet <sup>L</sup> Caspian Tern <sup>L</sup> Curlew Sandpiper <sup>CR</sup> Eastern Curlew <sup>CR</sup> Eastern Great Egret <sup>L</sup> Eastern Quoll <sup>L, EN</sup> Eltham Copper Butterfly <sup>L, EN</sup> Fairy Tern <sup>L, VU</sup> Golden Sun Moth <sup>L, CR</sup> Grassland Earless Dragon <sup>L, EN</sup> Grey-headed Flying-fox <sup>L, VU</sup> Growling Grass Frog <sup>L, VU</sup> Intermediate Egret <sup>L</sup> Lesser Sandplover <sup>EN</sup> Little Egret <sup>L</sup> Little Egret <sup>L</sup> Plains Wanderer <sup>L, CR</sup>	1 (2008) 1 (1977) 1 (1994) 1 (1981) 1 (1977) 1 (1977) 27 (2008) 1 (1902) 1 (1922) 1 (1977) 2182 (2017) 1 (1884) 5 (2017) 22 (2016) 5 (1980) 1 (1978) 1 (1977) 1 (1977) 3 (1948)	5185 Tullamarine Retarding Basin (Wright St), Westmeadows (R) 3537 Napier Park (Grass PPES001) (L) 5198 Broadmeadows Valley Park - Bracken, Glycine, Pimelea & Poa sites (R) 5194 Broadmeadows Valley Park - Stylidium & Themeda sites (S) 4188 Maygar Army Barracks (Grass VPME02) Yet to be determined 5179 Attwood Creek, Grey Box Stand, Attwood (R) 5183 Maygar Grasslands (R) 5182 Banksia Gardens Grassland (R)



Investigation area name	NatureKit modelled vegetation community	Threatened flora species	Number of flora records (date of latest record)	Threatened fauna species	Number of fauna records (date of latest record)	Sites of biological significance
				Regent Honeyeater <sup>L, CR</sup> Striped Legless Lizard <sup>L, VU</sup> Swift Parrot <sup>L, CR</sup> Turquoise Parrot <sup>L</sup>	1 (1971) 3 (2011) 6 (1981) 1 (2000)	
Pascoe Vale Road	Creekline Grassy Woodland Grassy Woodland Plains Grassy Woodland	Large-flower Crane's-bill <sup>L</sup> Leafy Greenhood <sup>L</sup> Matted Flax-lily <sup>L, EN</sup> Purple Diuris <sup>L</sup> Tough Scurf-pea <sup>L</sup>	9 (2016) 1 (1770) 6 (2012) 1 (1932) 2 (2011)	Baillon's Crake <sup>L</sup> Brown Toadlet <sup>L</sup> Eastern Great Egret <sup>L</sup> Eastern Quoll <sup>L, EN</sup> Eltham Copper Butterfly <sup>L, EN</sup> Golden Sun Moth <sup>L, CR</sup> Grey-headed Flying-fox <sup>L, VU</sup> Growling Grass Frog <sup>L, VU</sup> Intermediate Egret <sup>L</sup> Plains Wanderer <sup>L, CR</sup> Regent Honeyeater <sup>L, CR</sup> Striped Legless Lizard <sup>L, VU</sup>	1 (2008) 1 (1994) 5 (2008) 1 (1902) 1 (1922) 2182 (2017) 5 (2017) 39 (2016) 1 (1976) 3 (1948) 1 (1971) 2 (2011)	5185 Tullamarine Retarding Basin (Wright St), Westmeadows (R) 3537 Napier Park (Grass PPES001) (L) 4509 Woodlands Historic Park (Gellibrand Hill) (S) 5054 Merri Creek - Barry Road Gorge (S) 5198 Broadmeadows Valley Park - Bracken, Glycine, Pimelea & Poa sites (R) 7137 Merri Creek, Fawkner/Reservoir (S) 5194 Broadmeadows Valley Park - Stylidium & Themeda sites (S) 4188 Maygar Army Barracks (Grass VPME02) Yet to be determined 5179 Attwood Creek, Grey Box Stand, Attwood (R) 5183 Maygar Grasslands (R)



Investigation area name	NatureKit modelled vegetation community	Threatened flora species	Number of flora records (date of latest record)	Threatened fauna species	Number of fauna records (date of latest record)	Sites of biological significance
						5182 Banksia Gardens Grassland (R)
Track Slew 2, Investigation Area A		Large-flower Crane's-bill <sup>L</sup> Leafy Greenhood <sup>L</sup> Matted Flax-lily <sup>L, EN</sup> Purple Diuris <sup>L</sup> Tough Scurf-pea <sup>L</sup>	9 (2016) 1 (1770) 6 (2012) 1 (1932) 2 (2011)	Baillon's Crane <sup>L</sup> Brown Toadlet <sup>L</sup> Eastern Great Egret <sup>L</sup> Eastern Quoll <sup>L, EN</sup> Eltham Copper Butterfly <sup>L, EN</sup> Fairy Tern <sup>L, VU</sup> Golden Sun Moth <sup>L, CR</sup> Grey-headed Flying-fox <sup>L, VU</sup> Growling Grass Frog <sup>L, VU</sup> Intermediate Egret <sup>L</sup> Lesser Sandplover <sup>EN</sup> Plains Wanderer <sup>L, CR</sup> Striped Legless Lizard <sup>L, VU</sup>	1 (2008) 1 (1994) 5 (2008) 1 (1902) 1 (1922) 1 (1977) 2182 (2017) 5 (2017) 25 (2016) 1 (1976) 1 (1978) 3 (1948) 2 (2011)	5185 Tullamarine Retarding Basin (Wright St), Westmeadows (R) 3537 Napier Park (Grass PPES001) (L) 4509 Woodlands Historic Park (Gellibrand Hill) (S) 5198 Broadmeadows Valley Park - Bracken, Glycine, Pinelea & Poa sites (R) 7137 Merri Creek, Fawkner/Reservoir (S) 5194 Broadmeadows Valley Park - Stylidium & Themeda sites (S) 4188 Maygar Army Barracks (Grass VPME02) Yet to be determined 5179 Attwood Creek, Grey Box Stand, Attwood (R) 5183 Maygar Grasslands (R) 5182 Banksia Gardens Grassland (R)
Camp Road & Riggall St	None	Large-flower Crane's-bill <sup>L</sup> Leafy Greenhood <sup>L</sup> Matted Flax-lily <sup>L, EN</sup> Plump Swamp Wallaby-grass Purple Diuris <sup>L</sup> Tough Scurf-pea <sup>L</sup>	10 (2016) 1 (1770) 30 (2014) 2 (1989) 2 (1932) 2 (2011)	Baillon's Crane <sup>L</sup> Brown Toadlet <sup>L</sup> Caspian Tern <sup>L</sup> Eastern Great Egret <sup>L</sup> Eastern Quoll <sup>L, EN</sup> Eltham Copper Butterfly <sup>L, EN</sup> Freckled Duck <sup>L</sup> Golden Sun Moth <sup>L, CR</sup>	3 (2008) 14 (1994) 1 (2007) 6 (2008) 1 (1902) 1 (1922) 1 (2007) 2200 (2017)	5185 Tullamarine Retarding Basin (Wright St), Westmeadows (R) 4509 Woodlands Historic Park (Gellibrand Hill) (S) 5054 Merri Creek - Barry Road Gorge (S)



Investigation area name	NatureKit modelled vegetation community	Threatened flora species	Number of flora records (date of latest record)	Threatened fauna species	Number of fauna records (date of latest record)	Sites of biological significance
				Grey-headed Flying-fox <sup>L, VU</sup> Growling Grass Frog <sup>L, VU</sup> Intermediate Egret <sup>L</sup> Macquarie Perch <sup>L, EN</sup> Plains Wanderer <sup>L, CR</sup> Regent Honeyeater <sup>L, CR</sup> Striped Legless Lizard <sup>L, VU</sup>	5 (2017) 45 (2017) 1 (1976) 1 (1970) 2 (1948) 1 (1971) 1 (1989)	5198 Broadmeadows Valley Park - Bracken, Glycine, Pimelea & Poa sites (R) 7137 Merri Creek, Fawcner/Reservoir (S) 5194 Broadmeadows Valley Park - Stylidium & Themeda sites (S) 3619 Craigieburn Grasslands Flora and Fauna Reserve (N) 5198 Broadmeadows Valley Park - Bracken, Glycine, Pimelea & Poa sites (R) 3514 Cooper Street Grassland Public and Private (Grass PPBR001) (S) 4188 Maygar Army Barracks (Grass VPME02) Yet to be determined 5179 Attwood Creek, Grey Box Stand, Attwood (R) 5183 Maygar Grasslands (R) 5182 Banksia Gardens Grassland (R)
Barry Road Overbridge (Dallas)	None	Basalt Peppergrass <sup>L, EN</sup> Curly Sedge <sup>L</sup> Large-flower Crane's-bill <sup>L</sup> Leafy Greenhood <sup>L</sup> Matted Flax-lily <sup>L, EN</sup> Plump Swamp Wallaby-grass Purple Diuris <sup>L</sup> River Swamp Wallaby-grass <sup>V</sup>	1 (1977) 6 (2001) 10 (2016) 1 (1770) 35 (2014) 2 (1989) 1 (1900) 1 (1989)	Baillon's Crane <sup>L</sup> Blue-billed Duck <sup>L</sup> Brown Toadlet <sup>L</sup> Caspian Tern <sup>L</sup> Eastern Barred Bandicoot <sup>L, EN</sup> Eastern Great Egret <sup>L</sup> Eltham Copper Butterfly <sup>L, EN</sup> Freckled Duck <sup>L</sup> Golden Sun Moth <sup>L, CR</sup>	3 (2008) 3 (200) 16 (1994) 1 (2007) 1 (2003) 7 (2012) 1 (1922) 3 (2013) 2217 (2017)	5185 Tullamarine Retarding Basin (Wright St), Westmeadows (R) 4509 Woodlands Historic Park (Gellibrand Hill) (S) 5054 Merri Creek - Barry Road Gorge (S) 5198 Broadmeadows Valley Park - Bracken, Glycine, Pimelea & Poa sites (R)



Investigation area name	NatureKit modelled vegetation community	Threatened flora species	Number of flora records (date of latest record)	Threatened fauna species	Number of fauna records (date of latest record)	Sites of biological significance
Signal gantry at 21.833 km	None	Swamp Everlasting <sup>L, VU</sup> Tough Scurf-pea <sup>L</sup>	1 (2005) 2 (2011)	Grey-headed Flying-fox <sup>L, VU</sup> Growling Grass Frog <sup>L, VU</sup> Little Egret <sup>L</sup> Macquarie Perch <sup>L, EN</sup> Striped Legless Lizard <sup>L, VU</sup> Swift Parrot <sup>L, CR</sup>	9 (2017) 135 (2017) 1 (1991) 1 (1970) 1 (1989) 1 (1990)	7137 Merri Creek, Fawcner/Reservoir (S) 5194 Broadmeadows Valley Park - Stylidium & Themeda sites (S) 3619 Craigieburn Grasslands Flora and Fauna Reserve (N) 4509 Woodlands Historic Park (Gellibrand Hill) (S) 3514 Cooper Street Grassland Public and Private (Grass PPBR001) (S) 4188 Maygar Army Barracks (Grass VPME02) Yet to be determined 5179 Attwood Creek, Grey Box Stand, Attwood (R) 5183 Maygar Grasslands (R) 5182 Banksia Gardens Grassland (R)
		Curly Sedge <sup>L</sup> Leafy Greenhood <sup>L, VU</sup> Matted Flax-lily <sup>L, EN</sup> Plump Swamp Wallaby-grass <sup>V</sup> River Swamp Wallaby-grass <sup>V</sup> Small Milkwort <sup>L</sup> Swamp Everlasting <sup>L, VU</sup> Tough Scurf-pea <sup>L</sup>	14 (2001) 1 (1770) 10 (2005) 5 (2001) 1 (1989) 2 (2000) 1 (2005) 3 (2000)	Baillon's Crane <sup>L</sup> Blue-billed Duck <sup>L</sup> Brown Toadlet <sup>L</sup> Bush Stone-curlew <sup>L</sup> Caspian Tern <sup>L</sup> Diamond Firetail <sup>L</sup> Eastern Great Egret <sup>L</sup> Eastern Quoll <sup>L, EN</sup> Freckled Duck <sup>L</sup> Golden Sun Moth <sup>L, CR</sup> Growling Grass Frog <sup>L, VU</sup> Little Egret <sup>L</sup> Plains Wanderer <sup>L, CR</sup> Red Chested Button-quail <sup>L</sup>	4 (2006) 3 (2000) 15 (1994) 1 (1940) 1 (2007) 2 (1990) 3 (2005) 2 (1910) 2 (2007) 101 (2008) 80 (2008) 2 (1991) 2 (1991) 1 (1991)	4509 Woodlands Historic Park (Gellibrand Hill) (S) 5054 Merri Creek - Barry Road Gorge (S) 5198 Broadmeadows Valley Park - Bracken, Glycine, Pimelea & Poa sites (R) 5194 Broadmeadows Valley Park - Stylidium & Themeda sites (S) 3619 Craigieburn Grasslands Flora and Fauna Reserve (N) 4855 Merri Creek - Craigieburn to Donnybrook (S)







Investigation area name	NatureKit modelled vegetation community	Threatened flora species	Number of flora records (date of latest record)	Threatened fauna species	Number of fauna records (date of latest record)	Sites of biological significance
				Intermediate Egret <sup>L</sup> Lewin's Rail <sup>L</sup> Little Egret <sup>L</sup> Plains Wanderer <sup>L, CR</sup> Red Chested Button-quail <sup>L</sup> Regent Honeyeater <sup>L, CR</sup> Speckled Warbler <sup>L</sup> Spot-tailed Quoll <sup>L, EN</sup> Striped Legless Lizard <sup>L, VU</sup>	1 (1991) 5 (1991) 3 (1991) 4 (1991) 1 (1986) 3 (1978) 2 (1910) 3 (1991)	
Track Slew 3, Investigation Area B	Swampy Riparian Complex <sup>E</sup>	Basalt Peppercreos <sup>L, EN</sup> Small Scurf-pea <sup>L</sup> Swamp Everlasting <sup>L, VU</sup> Swamp Fireweed <sup>VU</sup>	1 (2010) 1 (2000) 70 (2014) 21 (2002)	Australasian Bittern <sup>L, EN</sup> Brown Toadlet <sup>L</sup> Brush-tailed Phascogale <sup>L</sup> Eastern Great Egret <sup>L</sup> Golden Sun Moth <sup>L, CR</sup> Growling Grass Frog <sup>L, VU</sup> Plains Wanderer <sup>L, CR</sup> Southern Brown Bandicoot <sup>L, CR</sup> Speckled Warbler <sup>L</sup> Striped Legless Lizard <sup>L, VU</sup> Swift Parrot <sup>L, CR</sup>	1 (1990) 150 (1974) 1 (1962) 1 (1989) 12 (2017) 1 (1989) 1 (1905) 1 (1968) 1 (1991) 1 (1991) 1 (1991)	4965 Upper Plenty (R) 4854 Hernes Swamp (N) 5130 Beveridge Rail Reserve - Camoola Swamp (S) 4889 Bruces Creek - Dry Creek (S)
Broadford Road	Riparian Forest Valley Grassy Forest	None	n/a	Brown Toadlet <sup>L</sup> Brush-tailed Phascogale <sup>L</sup> Diamond Firetail <sup>L</sup> Golden Sun Moth <sup>L, CR</sup> Hooded Robin <sup>L</sup> Powerful Owl <sup>L</sup> Regent Honeyeater <sup>L, CR</sup> Speckled Warbler <sup>L</sup>	29 (2005) 2 (2013) 2 (1976) 2 (2016) 2 (1976) 1 (2006) 1 (1971) 1 (1976)	None



Investigation area name	NatureKit modelled vegetation community	Threatened flora species	Number of flora records (date of latest record)	Threatened fauna species	Number of fauna records (date of latest record)	Sites of biological significance
Signal gantry at 66.215 km	Plains Grassy Woodland	Brittle Greenhood <sup>L</sup> Small Milkwort <sup>L</sup>	1 (1904) 1 (2011)	Barking Owl <sup>L</sup> Brown Toadlet <sup>L</sup> Brush-tailed Phascogale <sup>L</sup> Golden Sun Moth <sup>L,CR</sup> Hooded Robin <sup>L</sup> Powerful Owl <sup>L</sup> Speckled Warbler <sup>L</sup>	1 (2013) 4 (1974) 7 (2013) 37 (2013) 1 (1999) 1 (2013) 1 (1999)	None
Signal gantry at 69.801 km	Valley Grassy Forest	None	n/a	Brown Toadlet <sup>L</sup> Brush-tailed Phascogale <sup>L</sup> Common Bent-wing Bat <sup>L</sup> Golden Sun Moth <sup>L,CR</sup> Hooded Robin <sup>L</sup> Large Ant Blue Butterfly <sup>L</sup> Small Ant Blue Butterfly <sup>L</sup> Speckled Warbler <sup>L</sup> Square-tailed Kite <sup>L</sup>	4 (1958) 5 (2011) 1 (2004) 91 (2016) 14 (1999) 3 (1999) 2 (1992) 2 (1999) 1 (2007)	None
Signal gantry at 73.664 km	Grassy Woodland Plains Grassy Woodland	Swamp Diuris <sup>L</sup>	1 (1977)	Brown Toadlet <sup>L</sup> Brush-tailed Phascogale <sup>L</sup> Common Bent-wing Bat <sup>L</sup> Diamond Firetail <sup>L</sup> Golden Sun Moth <sup>L,CR</sup> Hooded Robin <sup>L</sup> Large Ant Blue Butterfly <sup>L</sup> Plains Wanderer <sup>L,CR</sup> Small Ant Blue Butterfly <sup>L</sup> Speckled Warbler <sup>L</sup> Square-tailed Kite <sup>L</sup>	4 (1958) 9 (2011) 1 (2004) 2 (2007) 53 (2016) 8 (1999) 3 (1991) 1 (1983) 4 (1992) 2 (2007) 4 (2007)	None



Investigation area name	NatureKit modelled vegetation community	Threatened flora species	Number of flora records (date of latest record)	Threatened fauna species	Number of fauna records (date of latest record)	Sites of biological significance
Hamilton Street Bridge (Broadford)	None	Swamp Diuris <sup>L</sup>	1 (1977)	Blue-billed Duck <sup>L</sup> Brown Toadlet <sup>L</sup> Brush-tailed Phascogale <sup>L</sup> Bush Stone-curlew <sup>L</sup> Common Bent-wing Bat <sup>L</sup> Diamond Firetail <sup>L</sup> Freckled Duck <sup>L</sup> Golden Sun Moth <sup>L,CR</sup> Hooded Robin <sup>L</sup> Large Ant Blue Butterfly <sup>L</sup> Plains Wanderer <sup>L,CR</sup> Small Ant Blue Butterfly <sup>L</sup> Speckled Warbler <sup>L</sup> Square-tailed Kite <sup>L</sup> Striped Legless Lizard <sup>L,VU</sup>	4 (2001) 4 (1958) 8 (2012) 1 (1884) 1 (2004) 2 (2007) 1 (2005) 50 (2016) 13 (1999) 3 (1991) 1 (1983) 4 (1992) 2 (2007) 4 (2007) 1 (2010)	7437 Mt Piper Sun Moth site, Mt Piper NCR (S) 7436 Mt Piper summit - butterfly community (S) 4374 Broadford Rail Reserve (L)
Short Street Overbridge (Broadford)	Box Ironbark Forest Plains Grassy Woodland	Swamp Diuris <sup>L</sup>	1 (1977)	Blue-billed Duck <sup>L</sup> Brown Toadlet <sup>L</sup> Brush-tailed Phascogale <sup>L</sup> Bush Stone-curlew <sup>L</sup> Common Bent-wing Bat <sup>L</sup> Diamond Firetail <sup>L</sup> Freckled Duck <sup>L</sup> Golden Sun Moth <sup>L,CR</sup> Hooded Robin <sup>L</sup> Large Ant Blue Butterfly <sup>L</sup> Plains Wanderer <sup>L,CR</sup> Small Ant Blue Butterfly <sup>L</sup> Speckled Warbler <sup>L</sup> Square-tailed Kite <sup>L</sup> Striped Legless Lizard <sup>L,VU</sup>	4 (2001) 4 (1958) 8 (2012) 1 (1884) 1 (2004) 2 (2007) 1 (2005) 47 (2016) 2 (1993) 3 (1993) <sup>L</sup> 1 (1983) 5 (1992) 2 (2007) 4 (2007) 2 (2012)	7437 Mt Piper Sun Moth site, Mt Piper NCR (S) 7436 Mt Piper summit - butterfly community (S) 4374 Broadford Rail Reserve (L)



Investigation area name	NatureKit modelled vegetation community	Threatened flora species	Number of flora records (date of latest record)	Threatened fauna species	Number of fauna records (date of latest record)	Sites of biological significance
Marchbanks Road Overbridge (Broadford)	None	Swamp Diuris <sup>L</sup>	1 (1977)	Blue-billed Duck <sup>L</sup> Brown Toadlet <sup>L</sup> Brush-tailed Phascogale <sup>L</sup> Bush Stone-curlew <sup>L</sup> Diamond Firetail <sup>L</sup> Freckled Duck <sup>L</sup> Golden Sun Moth <sup>L,OR</sup> Hooded Robin <sup>L</sup> Large Ant Blue Butterfly <sup>L</sup> Plains Wanderer <sup>L,OR</sup> Small Ant Blue Butterfly <sup>L</sup> Speckled Warbler <sup>L</sup> Square-tailed Kite <sup>L</sup> Striped Legless Lizard <sup>L,VU</sup>	4 (2001) 4 (1958) 7 (2012) 1 (1884) 1 (2007) 1 (2005) 44 (2016) 1 (1987) 3 (1993) 1 (1983) 4 (1992) 1 (2007) 4 (2007) 2 (2012)	4374 Broadford Rail Reserve (L)
Signal Gantry at 79,956 km	Grassy Woodland Plains Grassy Woodland	Swamp Diuris <sup>L</sup>	1 (1977)	Blue-billed Duck <sup>L</sup> Brush-tailed Phascogale <sup>L</sup> Bush Stone-curlew <sup>L</sup> Common Bent-wing Bat <sup>L</sup> Diamond Firetail <sup>L</sup> Freckled Duck <sup>L</sup> Golden Sun Moth <sup>L,OR</sup> Hooded Robin <sup>L</sup> Plains Wanderer <sup>L,OR</sup> Speckled Warbler <sup>L</sup> Square-tailed Kite <sup>L</sup> Striped Legless Lizard <sup>L,VU</sup>	4 (2001) 6 (2012) 1 (1884) 1 (2004) 1 (2007) 1 (2005) 9 (2012) 2 (2004) 1 (1983) 1 (2007) 4 (2007) 2 (2012)	4374 Broadford Rail Reserve (L)
Signal gantry at 86,247 km	Grassy Woodland	None	n/a	Blue-billed Duck <sup>L</sup> Brown Toadlet <sup>L</sup> Brush-tailed Phascogale <sup>L</sup> Diamond Firetail <sup>L</sup>	2 (1980) 17 (1958) 3 (2012) 3 (1980)	None



Investigation area name	NatureKit modelled vegetation community	Threatened flora species	Number of flora records (date of latest record)	Threatened fauna species	Number of fauna records (date of latest record)	Sites of biological significance
				Eastern Great Egret <sup>L</sup> Genoveva Blue <sup>L</sup> Golden Sun Moth <sup>L, OR</sup> Grey-crowned Babbler <sup>L</sup> Hooded Robin <sup>L</sup> Southern Bettong <sup>L, EX</sup> Speckled Warbler <sup>L</sup> Swift Parrot <sup>L, OR</sup>	13 (1980) 2 (1970) 1 (1990) 2 (1980) 4 (2004) 1 (1861) 7 (1992) 2 (1979)	
Hume Highway Tallarook Precinct (Tallarook)	None	None	n/a	Blue-billed Duck <sup>L</sup> Brown Toadlet <sup>L</sup> Brush-tailed Phascogale <sup>L</sup> Diamond Firetail <sup>L</sup> Eastern Great Egret <sup>L</sup> Genoveva Blue <sup>L</sup> Golden Sun Moth <sup>L, OR</sup> Grey-crowned Babbler <sup>L</sup> Hooded Robin <sup>L</sup> Southern Bettong <sup>L, EX</sup> Speckled Warbler <sup>L</sup> Swift Parrot <sup>L, OR</sup>	2 (1980) 17 (1958) 2 (2012) 3 (1980) 13 (1980) 2 (1970) <sup>L</sup> 1 (1990) 2 (1980) 4 (2004) 1 (1861) 8 (1992) 2 (1979)	None
Track Slew 4, Investigation Area C	None	None	n/a	Blue-billed Duck <sup>L</sup> Brown Toadlet <sup>L</sup> Brush-tailed Phascogale <sup>L</sup> Diamond Firetail <sup>L</sup> Eastern Great Egret <sup>L</sup> Genoveva Blue <sup>L</sup> Golden Sun Moth <sup>L, OR</sup> Grey-crowned Babbler <sup>L</sup> Hooded Robin <sup>L</sup> Southern Bettong <sup>L, EX</sup>	2 (1980) 17 (1958) 2 (2012) 3 (1980) 13 (1980) 2 (1970) 1 (1990) 2 (1980) 4 (2004) 1 (1861)	None



Investigation area name	NatureKit modelled vegetation community	Threatened flora species	Number of flora records (date of latest record)	Threatened fauna species	Number of fauna records (date of latest record)	Sites of biological significance
				Speckled Warbler <sup>L</sup> Swift Parrot <sup>L, OR</sup>	8 (1999) 2 (1979)	
Track Slew 5, Investigation Area C		Large-headed Fireweed <sup>L, VU</sup>	1 (1770)	Baillon's Crane <sup>L</sup> Barking Owl <sup>L</sup> Blue-billed Duck <sup>L</sup> Brush-tailed Phascogale <sup>L</sup> Bush Stone-curlew <sup>L</sup> Diamond Firetail <sup>L</sup> Eastern Great Egret <sup>L</sup> Grey-crowned Babbler <sup>L</sup> Growling Grass Frog <sup>L, VU</sup> Hooded Robin <sup>L</sup> Murray Spiny Crayfish <sup>L</sup> Powerful Owl <sup>L</sup> Southern Bettong <sup>L, EX</sup> Speckled Warbler <sup>L</sup> Spot-tailed Quoll <sup>L, EN</sup> Squirrel Glider <sup>L</sup> Striped Legless Lizard <sup>L, VU</sup> Swift Parrot <sup>L, OR</sup>	1 (1987) 1 (1978) 2 (1980) 2 (1978) 1 (1978) 9 (2000) 21 (1989) 2 (1980) 1 (1788) 4 (1980) 1 (1935) 2 (2008) 1 (1861) 10 (2001) 1 (1961) 3 (1994) 1 (2003) 2 (1979)	None
Signal gantry at 95.631 km	Floodplain Riparian Woodland	Large-headed Fireweed <sup>L, VU</sup>	1 (1770)	Baillon's Crane <sup>L</sup> Barking Owl <sup>L</sup> Blue-billed Duck <sup>L</sup> Brush-tailed Phascogale <sup>L</sup> Bush Stone-curlew <sup>L</sup> Diamond Firetail <sup>L</sup>	1 (1987) 1 (1978) 2 (1980) 2 (1978) 1 (1978) 9 (2000)	None



Investigation area name	NatureKit modelled vegetation community	Threatened flora species	Number of flora records (date of latest record)	Threatened fauna species	Number of fauna records (date of latest record)	Sites of biological significance
				Eastern Great Egret <sup>L</sup> Grey-crowned Babbler <sup>L</sup> Growling Grass Frog <sup>L, VU</sup> Hooded Robin <sup>L</sup> Murray Spiny Crayfish <sup>L</sup> Powerful Owl <sup>L</sup> Southern Bellbird <sup>L, EX</sup> Speckled Warbler <sup>L</sup> Spot-tailed Quoll <sup>L, EN</sup> Squirrel Glider <sup>L</sup> Striped Legless Lizard <sup>L, VU</sup> Swift Parrot <sup>L, CR</sup>	21 (1989) 2 (1980) 1 (1788) 4 (1980) 1 (1935) 2 (2008) 1 (1861) 9 (1992) 1 (1961) 1 (1994) 1 (2003) 1 (1979)	
Track Slew 6, Investigation Area D		Large-headed Fireweed <sup>L, VU</sup>	1 (1770)	Baillon's Crane <sup>L</sup> Barking Owl <sup>L</sup> Blue-billed Duck <sup>L</sup> Brush-tailed Phascogale <sup>L</sup> Bush Stone-curlew <sup>L</sup> Diamond Firetail <sup>L</sup> Eastern Great Egret <sup>L</sup> Growling Grass Frog <sup>L, VU</sup> Hooded Robin <sup>L</sup> Murray Spiny Crayfish <sup>L</sup> Painted Honeyeater <sup>L, VU</sup> Powerful Owl <sup>L</sup> Speckled Warbler <sup>L</sup> Spot-tailed Quoll <sup>L, EN</sup> Square-tailed Kite <sup>L</sup> Squirrel Glider <sup>L</sup> Striped Legless Lizard <sup>L, VU</sup>	1 (1987) 2 (1997) 1 (1987) 3 (2013) 4 (1999) 14 (2000) 12 (1992) 1 (1788) 1 (1978) 1 (1935) 1 (2013) 2 (2008) 5 (2001) 1 (1961) 1 (2016) 2 (1978) 1 (2003)	4695 Seymour Bushland Reserve (R)



Investigation area name	NatureKit modelled vegetation community	Threatened flora species	Number of flora records (date of latest record)	Threatened fauna species	Number of fauna records (date of latest record)	Sites of biological significance
Signal gantry at 99.120 km	None	Large-headed Fireweed <sup>L, VU</sup>	1 (1770)	Baillon's Crane <sup>L</sup> Barking Owl <sup>L</sup> Blue-billed Duck <sup>L</sup> Brush-tailed Phascogale <sup>L</sup> Bush Stone-curlew <sup>L</sup> Diamond Firetail <sup>L</sup> Eastern Great Egret <sup>L</sup> Growling Grass Frog <sup>L, VU</sup> Hooded Robin <sup>L</sup> Murray Spiny Crayfish <sup>L</sup> Painted Honeyeater <sup>L, VU</sup> Powerful Owl <sup>L</sup> Speckled Warbler <sup>L</sup> Spot-tailed Quoll <sup>L, EN</sup> Square-tailed Kite <sup>L</sup> Squirrel Glider <sup>L</sup> Striped Legless Lizard <sup>L, VU</sup>	1 (1987) 2 (1997) 1 (1987) 3 (2013) 4 (1999) 14 (2000) 10 (1992) 1 (1788) 1 (1978) 1 (1935) 1 (2013) 2 (2008) 5 (2001) 1 (1961) 2 (2016) 2 (1978) 1 (2003)	4375 Mangalore Rail Reserve (R) 4695 Seymour Bushland Reserve (R)
Seymour-Avenel Road Overbridge (Seymour)	Box Ironbark Forest <sup>v</sup> Plains Grassy Woodland <sup>E</sup>	Large-headed Fireweed <sup>L, VU</sup>	1 (1770)	Baillon's Crane <sup>L</sup> Blue-billed Duck <sup>L</sup> Brush-tailed Phascogale <sup>L</sup> Diamond Firetail <sup>L</sup> Eastern Great Egret <sup>L</sup> Powerful Owl <sup>L</sup> Speckled Warbler <sup>L</sup> Square-tailed Kite <sup>L</sup> Striped Legless Lizard <sup>L, VU</sup>	1 (1987) 1 (1987) 1 (2013) 2 (2000) 14 (1992) 2 (2008) 1 (1976) 1 (2016) 1 (2003)	4375 Mangalore Rail Reserve (R)



Investigation area name	NatureKit modelled vegetation community	Threatened flora species	Number of flora records (date of latest record)	Threatened fauna species	Number of fauna records (date of latest record)	Sites of biological significance
Track Slew 7, Investigation Area E		Large-headed Fireweed <sup>L, VU</sup>	1 (1770)	Baillon's Crane <sup>L</sup> Blue-billed Duck <sup>L</sup> Brown Toadlet <sup>L</sup> Brush-tailed Phascogale <sup>L</sup> Diamond Firetail <sup>L</sup> Eastern Great Egret <sup>L</sup> Hooded Robin <sup>L</sup> Powerful Owl <sup>L</sup> Speckled Warbler <sup>L</sup> Square-tailed Kite <sup>L</sup> Striped Legless Lizard <sup>L, VU</sup>	1 (1987) 1 (1987) 1 (1993) 1 (2013) 2 (2000) 14 (1992) 1 (2006) 2 (2008) 1 (1976) 1 (2016) 1 (2003)	4375 Mangalore Rail Reserve (R)
Hume Highway Seymour Precinct (Seymour)	None	None	n/a	Baillon's Crane <sup>L</sup> Blue-billed Duck <sup>L</sup> Brown Toadlet <sup>L</sup> Brush-tailed Phascogale <sup>L</sup> Bush Stone-curlew <sup>L</sup> Diamond Firetail <sup>L</sup> Eastern Great Egret <sup>L</sup> Hooded Robin <sup>L</sup> Speckled Warbler <sup>L</sup> Square-tailed Kite <sup>L</sup> Striped Legless Lizard <sup>L, VU</sup> Swift Parrot <sup>L, OR</sup>	1 (1987) 2 (1987) 1 (1993) 1 (2013) 1 (1984) 1 (2006) 8 (1992) 4 (2006) 1 (1976) 2 (2016) 1 (2003) 2 (2006)	4735 Mangalore Rail Reserve (R) 2423 Mangalore Road Reservation (L) 2419 O'Connors Road, Mangalore (L) 6007 Red Gum Wetland Sth Gerrards Rd (R) 2424 Mangalore West Road Reservation (L)
Track Slew 8, Investigation Area F	Box Ironbark Forest <sup>tv</sup> Plains Grassy Woodland <sup>E</sup>	None	n/a	Baillon's Crane <sup>L</sup> Blue-billed Duck <sup>L</sup> Brown Toadlet <sup>L</sup> Brush-tailed Phascogale <sup>L</sup> Bush Stone-curlew <sup>L</sup> Diamond Firetail <sup>L</sup> Eastern Great Egret <sup>L</sup>	1 (1987) 2 (1987) 2 (1993) 1 (2013) 6 (1984) 3 (2006) 7 (1992)	4735 Mangalore Rail Reserve (R) 2423 Mangalore Road Reservation (L) 2419 O'Connors Road, Mangalore (L) 6007 Red Gum Wetland Sth Gerrards Rd (R)



Investigation area name	NatureKit modelled vegetation community	Threatened flora species	Number of flora records (date of latest record)	Threatened fauna species	Number of fauna records (date of latest record)	Sites of biological significance
				Hooded Robin <sup>L</sup> Speckled Warbler <sup>L</sup> Square-tailed Kite <sup>L</sup> Swift Parrot <sup>L, CR</sup>	5 (2006) 1 (1976) 2 (2016) 3 (2006)	2424 Mangalore West Road Reservation (L)
Track Slew 9, Investigation Area G	None		n/a	Blue-billed Duck <sup>L</sup> Brown Toadlet <sup>L</sup> Brush-tailed Phascogale <sup>L</sup> Bush Stone-curlew <sup>L</sup> Diamond Firetail <sup>L</sup> Eastern Great Egret <sup>L</sup> Hooded Robin <sup>L</sup> Little Egret <sup>L</sup> Square-tailed Kite <sup>L</sup> Squirrel Glider <sup>L</sup> Swift Parrot <sup>L, CR</sup>	1 (1987) 2 (1993) 3 (2013) 11 (1984) 3 (2006) 8 (1990) 5 (2006) 1 (1987) 2 (2016) 1 (1993) 3 (2006)	2436 South Mangalore west Road (L) 2430 O'Connors Road north (R) 2426 Mangalore west drainage line (L) 2435 Fergusons Road east (R) 2429 Mangalore West continuation (L) 2425 Gerrards Road (R) 4375 Mangalore Rail Reserve 2428 Fergusons Road, Avenel - Red Gum Wetland (R) 6006 Goulburn River west of Gerrards Rd (R) 2427 Gerrards Road continuation (L) 8341 Mangalore Army Base (S) 2423 Mangalore Road reservation (L) 2419 O'Connors Road, Mangalore (L) 6007 Red Gum wetland sth Gerrards Rd (R) 2424 Mangalore west Road reservation (L)
Anderson Street Bridge	None	Buloke <sup>L</sup> Euroa Guinea-flower <sup>L, VU</sup> Narrow Goodenia <sup>L</sup> Ridged Water-milfoil <sup>L, VU</sup>	2 (1992) 43 (2014) 2 (1992) 8 (2011)	Apostlebird <sup>L</sup> Baillon's Crake <sup>L</sup> Bandy <sup>L</sup> Blue-billed Duck <sup>L</sup>	1 (1987) 1 (1942) 1 (1942) 2 (1979)	8509 East side of Euroa/Shepparton Rd, adjacent to Sevens Creek (R)



Investigation area name	NatureKit modelled vegetation community	Threatened flora species	Number of flora records (date of latest record)	Threatened fauna species	Number of fauna records (date of latest record)	Sites of biological significance
				Brush-tailed Phascogale <sup>L</sup> Bush Stone-curlew <sup>L</sup> Diamond Firetail <sup>L</sup> Eastern Great Egret <sup>L</sup> Grey Goshawk <sup>L</sup> Grey-crowned Babbler <sup>L</sup> Ground Cuckoo-shrike <sup>L</sup> Murray Cod <sup>L, W</sup> Regent Honeyeater <sup>L, OR</sup> Squirrel Glider <sup>L</sup> Swift Parrot <sup>L, OR</sup>	14 (2016) 6 (1985) 3 (1977) 6 (1979) 1 (1978) 9 (1998) 1 (1915) 1 (1906) 7 (2005) 20 (1999) 5 (1998)	3760 Castle Creek (Grass RIVMP06) (Yet to be determined) 2500 Castle Creek east (R) 2816 Riggs Creek - Moglonemby - Heals Road corner (L) 2813 Burnview Road East (L) 7690 Euroa Arboretum (N) 2496 Neelands Road (L) 2642 Castle Creek- Sierns Road (R) 3761 Euroa Hill BR (part) (Grass RIVMP07) (Yet to be determined) 2803 Heals Road south (L) 2641 Woods Road south (L) 2493 Road reservation (Hume Highway south 1) (L) 2494 Wilkinson Lane Red Gum Wetland (R) 2814 Railway north, Miepoll south (L) 2805 Seven Creeks, Moglonemby road south (R) 2491 Walters Lane north (R) 3878 Walters Rd., south of Hume Fwy (Grass SB28) 2487 Mansfield Road West (L) 2486 Road Reservation - Seven Creeks corner (L)



Investigation area name	NatureKit modelled vegetation community	Threatened flora species	Number of flora records (date of latest record)	Threatened fauna species	Number of fauna records (date of latest record)	Sites of biological significance
						2806 Seven Creeks, Moglonemby Road west (R) 2497 Castle Creek, Mansfield Road (L) 2891 Strathaird Road south (L) 8059 Balmattum Hill Reserve - Strathbogie Shire (N) 3870 Walters Rd Reserve, south of FWY, west side (Grass SB19) (Yet to be determined) 2499 Creightons Creek Road north (L)
Benalla Station	None	Downy Swainson-pea <sup>L</sup> Narrow Goodenia <sup>L</sup> Purple Diuris <sup>L</sup> Red Swainson-pea <sup>L, VU</sup>	1 (1906) 1 (1989) 1 (1929) 2 (1906)	Blue-billed Duck <sup>L</sup> Brown Toadlet <sup>L</sup> Brush-tailed Phascogale <sup>L</sup> Bush Stone-curlew <sup>L</sup> Carpet Python <sup>L</sup> Diamond Firetail <sup>L</sup> Eastern Great Egret <sup>L</sup> Flat-headed Galaxias <sup>CR</sup> Grey-crowned Babbler <sup>L</sup> Grey-headed Flying-fox <sup>L, VU</sup> Growling Grass Frog <sup>L, VU</sup> Hooded Robin <sup>L</sup> Australian Little Bittern <sup>L</sup> Macquarie Perch <sup>L, EN</sup> Murray Cod <sup>L, VU</sup> Murray River Rainbow Fish <sup>L, CR</sup> Painted Honeyeater <sup>L, VU</sup> Regent Honeyeater <sup>L, CR</sup> Scarlet-chested Parrot <sup>L</sup>	1 (1991) 1 (1992) 41 (2008) 5 (1991) 1 (1992) 9 (2001) 3 (2000) 1 (1979) 6 (2012) 9 (2008) 3 (1965) 6 (2001) 4 (2008) 2 (1915) 6 (2013) 12 (2014) 1 (1991) 2 (1991) 1 (1992)	None



Investigation area name	NatureKit modelled vegetation community	Threatened flora species	Number of flora records (date of latest record)	Threatened fauna species	Number of fauna records (date of latest record)	Sites of biological significance	
				Southern Purple-spotted Gudgeon <sup>L</sup> Speckled Warbler <sup>L</sup> Squirrel Glider <sup>L</sup> Swift Parrot <sup>L, CR</sup> Turquoise Parrot <sup>L</sup>	2 (2014) 2 (1992) 8 (2002) 2 (1995) 1 (1986)		
Beaconsfield Parade (Glenrowan)	Grassy Woodland Granitic Hills Woodland Valley Grassy Forest/Grassy Woodland Complex	Grey Grass-tree <sup>L</sup> Mountain Swainson-pea <sup>L, EN</sup> Narrow Goodenia <sup>L</sup> Northern Sandalwood <sup>L</sup> Purple Diuris <sup>L</sup> Slender Club-sedge <sup>L</sup>	2 (1986) 1 (1995) 8 (2005) 1 (1985) 26 (2008) 1 (1996)	Barking Owl <sup>L</sup> Brown Toadlet <sup>L</sup> Bush Stone-curlew <sup>L</sup> Carpet Python <sup>L</sup> Diamond Firetail <sup>L</sup> Grey-crowned Babbler <sup>L</sup> Growling Grass Frog <sup>L, VU</sup> Hooded Robin <sup>L</sup> Lewin's Rail <sup>L</sup> Regent Honeyeater <sup>L, CR</sup> Rufous-bellied Pademelon <sup>L</sup> Speckled Warbler <sup>L</sup> Squirrel Glider <sup>L</sup> Swift Parrot <sup>L, CR</sup> Turquoise Parrot <sup>L</sup>	1 (1974) 1 (1970) 2 (1995) 1 (1981) 1 (2000) 33 (2016) 1 (1788) 2 (1995) 1 (1998) 13 (1994) 2 (1972) 1 (2001) 2 (2010) 6 (1999) 7 (2017)	1477 1482 3422 (Yet to be determined) 1442 1478 8110 1453 1528 1473 1479 1472 1454 1480 3423  1481 3352	Glenrowan-Moyhu Rd. (L) Futters Range (L) Melbourne-Albury Rail Reserve, Taminick Gap (Grass N) (Yet to be determined) Opposite Hamilton Park- Roads de/Rail Reserve (S) Glenrowan Bushland Reserve (Grass AWGT02) (S) Glenrowan - reserve - Wangaratta Shire (N) Old Hume Highway- Glenrowan (Edge of shire) (S) 15 Mile Creek(At Snow Rd crossing) (L) Old Hume Highway-Upper Taminick Rd (S) Glenrowan Rifle Range (L) Railline Reserve(Melb-Sydney) Opp. Orchard Rd (S) Glenrowan West Rd (S) Thrum's Lane - Mill Rd. (S) Glenrowan Rail Reserve (Grass NEBN003) (Yet to be determined) L.C.C. Bushland Reserve(169) (L) Glenrowan Recreation Reserve (Grass AWGT02) (Yet to be determined)
Wangaratta Station	Riparian Forest Valley Grassy Forest	Mountain Swainson-pea <sup>L, EN</sup> Narrow Goodenia <sup>L</sup> Northern Sandalwood <sup>L</sup> Purple Diuris <sup>L</sup>	6 (1991) 1 (1993) 4 (2009) 1 (1992)	Australasian Bittern <sup>L, EN</sup> Barking Owl <sup>L</sup> Blue-billed Duck <sup>L</sup> Brolga <sup>L</sup> Brown Toadlet <sup>L</sup>	1 (1992) 9 (2008) 20 (2006) 1 (1919) 4 (1964)	Horseshoe Lagoon (S) One Mile Creek (S) Wangaratta Common (AWGT01) (Yet to be determined) Wangaratta Common (Grass AWGT01) (S)	



Investigation area name	NatureKit modelled vegetation community	Threatened flora species	Number of flora records (date of latest record)	Threatened fauna species	Number of fauna records (date of latest record)	Sites of biological significance
				Bush Stone-curlew <sup>L</sup> Carpet Python <sup>L</sup> Diamond Dove <sup>L</sup> Diamond Firetail <sup>L</sup> Eastern Great Egret <sup>L</sup> Freckled Duck <sup>L</sup> Glossy Black-Cockatoo <sup>L</sup> Grey-headed Flying-fox <sup>L, VU</sup> Growling Grass Frog <sup>L, VU</sup> Hooded Robin <sup>L</sup> Intermediate Egret <sup>L</sup> Macquarie Perch <sup>L, EN</sup> Murray Cod <sup>L, VU</sup> Powerful Owl <sup>L</sup> Regent Honeyeater <sup>L, CR</sup> Speckled Warbler <sup>L</sup> Squirrel Glider <sup>L</sup> Superb Parrot <sup>L, VU</sup> Swift Parrot <sup>L, CR</sup> Trout Cod <sup>L, EN</sup> Turquoise Parrot <sup>L</sup> White-bellied Sea-Eagle <sup>L</sup>	1 (1984) 1 (1997) 1 (1985) 2 (1976) 13 (2001) 2 (2004) 1 (1921) 1 (1962) 3 (1964) 1 (1971) 3 (2001) 1 (1950) 31 (2013) 1 (1995) 10 (1994) 1 (1971) 2 (2016) 1 (2000) 1 (1995) 9 (2013) 1 (1986) 1 (2006)	
Murray Valley Highway	Plains Grassy Woodland Plains Grassy Woodland/Grassy Woodland Complex	None	n/a	Blue-billed Duck <sup>L</sup> Brush-tailed Phascogale <sup>L</sup> Bush Stone-curlew <sup>L</sup> Diamond Firetail <sup>L</sup> Eastern Great Egret <sup>L</sup> Hooded Robin <sup>L</sup> Little Egret <sup>L</sup> Murray Cod <sup>L, VU</sup> Murray Spiny Crayfish <sup>L</sup>	1 (2006) 1 (1982) 1 (1984) 12 (2006) 3 (1978) 1 (1984) 1 (1978) 11 (2010) 3 (2008)	2137 Kookaburra Creek, Barnawartha (R) 2142 Indigo Creek (S) 2897 Hermitage Hill (R) Non 2898 Howlong Road/Harkins Road (R) 3137 Lavers - Oats Gap South (N) 3138 Barnawartha Scenic Reserve (N) 3147 Barnawartha Scenic Reserve 1 (R) 3148 Barnawartha Scenic Reserve 2 (R) 3149 Barnawartha Scenic Reserve 3 (R)



Investigation area name	NatureKit modelled vegetation community	Threatened flora species	Number of flora records (date of latest record)	Threatened fauna species	Number of fauna records (date of latest record)	Sites of biological significance
				Speckled Warbler <sup>L</sup> Squirrel Glider <sup>L</sup> Trout Cod <sup>L, EN</sup> Turquoise Parrot <sup>L</sup>	4 (2012) 3 (2002) 3 (2008) 1 (1958)	7227 Wades - Oats Gap North (S) 3147 Barnawartha Scenic Reserve 1 (R) 7228 Weatheralls - Black Range, Wodonga West (N) 3149 Barnawartha Scenic Reserve 3 (R) 2897 Hermitage Hill (R) 3148 Barnawartha Scenic Reserve 2 (R) 2898 Howlong Road/Harkins Road (R) 8491 Black Range Road, Barnawartha (R) 3137 Lavers - Oats Gap South (N)
Murray River Bridge	None	Dookie Daisy <sup>L</sup> Knead Swainson-pea <sup>L</sup> Mountain Swainson-pea <sup>L, EN</sup> Water Shield <sup>L</sup> Yarran Wattle <sup>L</sup>	2 (1886) 2 (1884) 2 (1886) 4 (1994) 1 (1988)	Australasian Bittern <sup>L, EN</sup> Baillon's Crane <sup>L</sup> Barking Owl <sup>L</sup> Blue-billed Duck <sup>L</sup> Brush-tailed Phascogale <sup>L</sup> Bush Stone-curlew <sup>L</sup> Diamond Dove <sup>L</sup> Diamond Firetail <sup>L</sup> Eastern Great Egret <sup>L</sup> Freckled Duck <sup>L</sup> Giant Bullfrog <sup>L</sup> Grey-crowned Babbler <sup>L</sup> Grey-headed Flying-fox <sup>L, VU</sup> Hooded Robin <sup>L</sup> Intermediate Egret <sup>L</sup> Australian Little Bittern <sup>L</sup> Little Egret <sup>L</sup> Maggie Goose <sup>L</sup> Murray Cod <sup>L, VU</sup> Murray River Rainbow Fish <sup>L, CR</sup> Murray Spiny Crayfish <sup>L</sup>	1 (1977) 1 (2006) 13 (2015) 27 (2001) 1 (1949) 1 (1980) 1 (2002) 9 (1999) 47 (2017) 6 (2005) 2 (2011) 1 (1980) 6 (2013) 3 (1981) 15 (2017) 1 (1981) 6 (2009) 1 (1994) 12 (2011) 1 (1961) 2 (2010)	7331 Silky Oat, Defence Forces, Wodonga (not yet rated) 7332 Pearce St, Defence Force, Wodonga (R)



Investigation area name	NatureKit modelled vegetation community	Threatened flora species	Number of flora records (date of latest record)	Threatened fauna species	Number of fauna records (date of latest record)	Sites of biological significance
				Plains Wanderer <sup>L, OR</sup> Speckled Warbler <sup>L</sup> Squirrel Glider <sup>L</sup> Swift Parrot <sup>L, OR</sup> Trout Cod <sup>L, EN</sup> Turquoise Parrot <sup>L</sup> White-bellied Sea-Eagle <sup>L</sup>	1 (1972) 8 (1981) 2 (2002) 2 (2008) 3 (2011) 6 (1981) 4 (1980)	