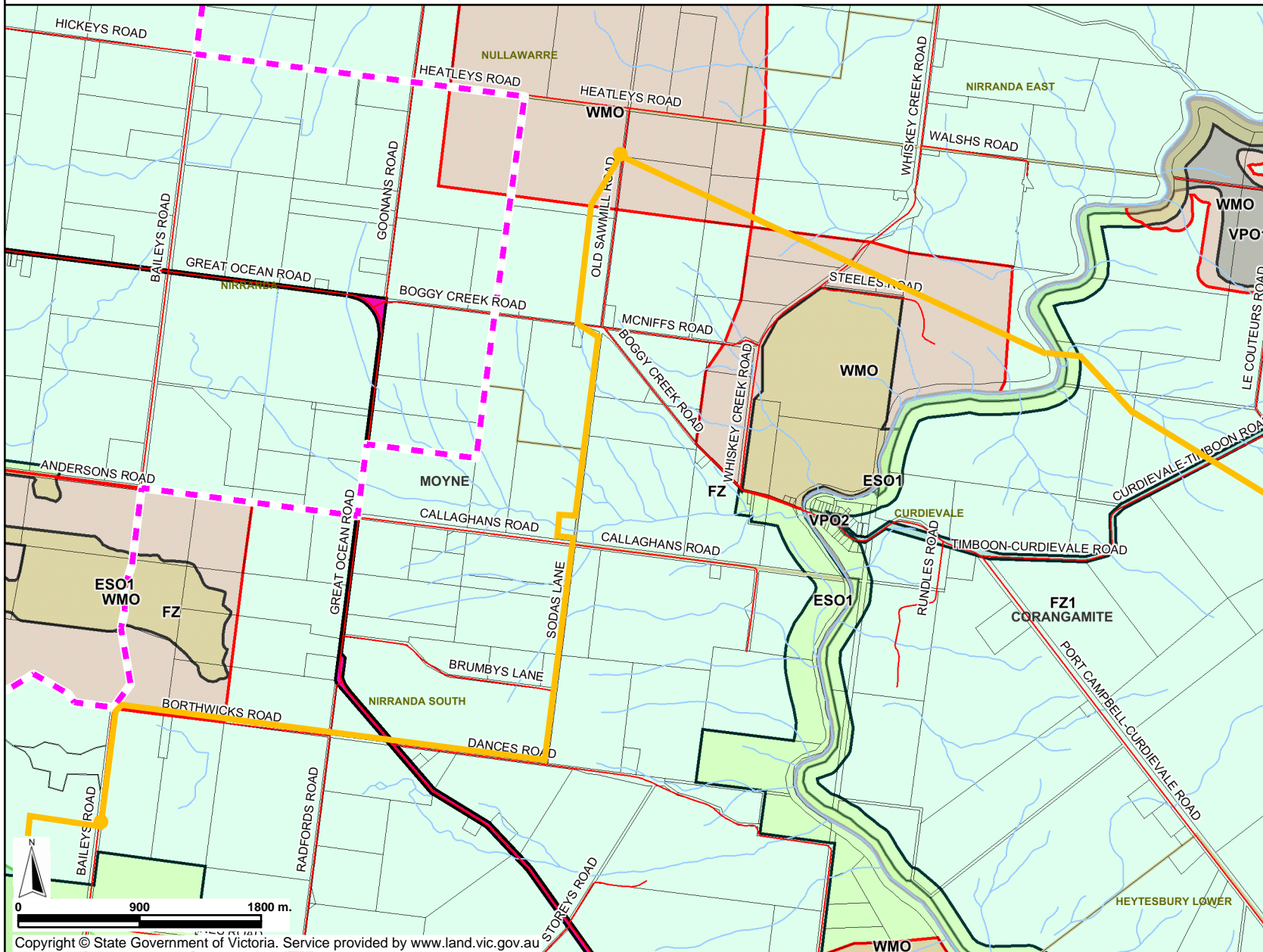


# Planning Map

## Halladale and Blackwatch Project - Map 2



### Legend

**WARRNAMBOOL** Major Town  
Major Road, Road  
Road name  
Railway, Tramway  
Property/Parcel, Selected  
Address, Lot, Crown allotment  
River, Stream, Coastline  
Waterbody  
Locality  
Locality Name  
Local Government Area  
Local Government Name  
Urban Growth Boundary (UGB)  
Area outside the UGB  
Investigation Area  
Land added to UGB since 2005  
Boundary of Searched Suburb

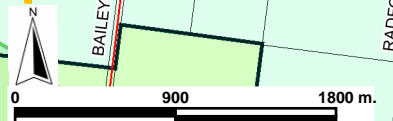
**SEDON** Locality Name  
Local Government Area  
Local Government Name

**BRIMBANK** Urban Growth Boundary (UGB)  
Area outside the UGB  
Investigation Area  
Land added to UGB since 2005  
Boundary of Searched Suburb

### OVERLAYS

ACZ - Activity Centre  
B1Z - Commercial 1  
B2Z - Commercial 1  
B3Z - Commercial 2  
B4Z - Commercial 2  
B5Z - Commercial 1  
C1Z - Commercial 1  
C2Z - Commercial 2  
CA - Commonwealth Land  
CCZ - Capital City  
CDZ - Comprehensive Development  
DZ - Dockland  
ERZ - Environmental Rural  
FZ - Farming  
GRZ - General Residential  
GWAZ - Green Wedge A  
GWZ - Green Wedge  
IN1Z - Industrial 1  
IN2Z - Industrial 2  
IN3Z - Industrial 3  
LDRZ - Low Density Residential  
MUZ - Mixed Use  
MRZ - Neighbourhood Residential  
PCRZ - Public Conservation & Resource  
PDZ - Priority Development  
PPRZ - Public Park & Recreation  
PUZ1 - Public Use - Service & Utility  
PUZ2 - Public Use - Education  
PUZ3 - Public Use - Health Community  
PUZ4 - Public Use - Transport  
PUZ5 - Public Use - Cemetery/Crematorium  
PUZ6 - Public Use - Local Government  
PUZ7 - Public Use - Other Public Use  
R1Z - Residential 1  
R2Z - Residential 2  
R3Z - Residential 3  
RAZ - Rural Activity  
RCZ - Rural Conservation  
RDZ1 - Road - Category 1  
RDZ2 - Road - Category 2  
RGZ - Residential Growth  
RLZ - Rural Living  
RUZ - Rural  
SUZ - Special Use  
TZ - Township  
UFZ - Urban Floodway  
UGZ - Urban Growth

AEO - Airport Environs  
BMD - Bushfire Management (also WMO)  
CLPO - City Link Project  
DCPD - Development Contributions Plan  
DDO - Design & Development  
DDOPT - Design & Development Part  
DPO - Development Plan  
EAO - Environmental Audit  
EMO - Erosion Management  
ESO - Environmental Significance  
FO - Floodway  
HO - Heritage  
IPO - Incorporated Plan  
LSIO - Land Subject to Inundation  
MAE01 - Melbourne Airport Environs 1  
MAE02 - Melbourne Airport Environs 2  
NCD - Neighbourhood Character  
PO - Parking  
PAO - Public Acquisition  
RO - Restructure  
RCD - Road Closure  
SBO - Special Building  
SLO - Significant Landscape  
SMD - Salinity Management  
SRO - State Resource  
VPO - Vegetation Protection



Copyright © State Government of Victoria. Service provided by www.land.vic.gov.au

Disclaimer: This map is a snapshot generated from Victorian Government data. This material may be of assistance to you but the State of Victoria does not guarantee that the publication is without flaw of any kind or is wholly appropriate for your particular purposes and therefore disclaims all liability for error, loss or damage which may arise from reliance upon it. All persons accessing this information should make appropriate enquiries to assess the currency of data.