

**LEGEND**

- Concept layout footprint

Ramsar Wetland

Railway

**Road**

Freeway

Highway
- Watercourse**

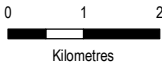
River

Stream

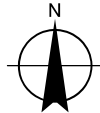
Channel

Drain/Channel/Other

Paper Size ISO A4



Map Projection: Transverse Mercator  
Horizontal Datum: GDA 1994  
Grid: GDA 1994 MGA Zone 55



**GeelongPort**  
GeelongPort Hydrogen Facility EES Referral

**Project location**

Project No. 31-12559567  
Revision No. 0  
Date 26 Apr 2022

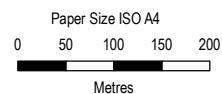
**FIGURE 1**



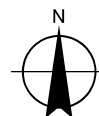


#### LEGEND

- Hydrogen Off Take Route Options
- Ammonia Import Pipeline
- Road and Power Utilities
- Building/area
- Ammonia Ship
- Fence
- Concept layout footprint



Map Projection: Transverse Mercator  
Horizontal Datum: GDA 1994  
Grid: GDA 1994 MGA Zone 55



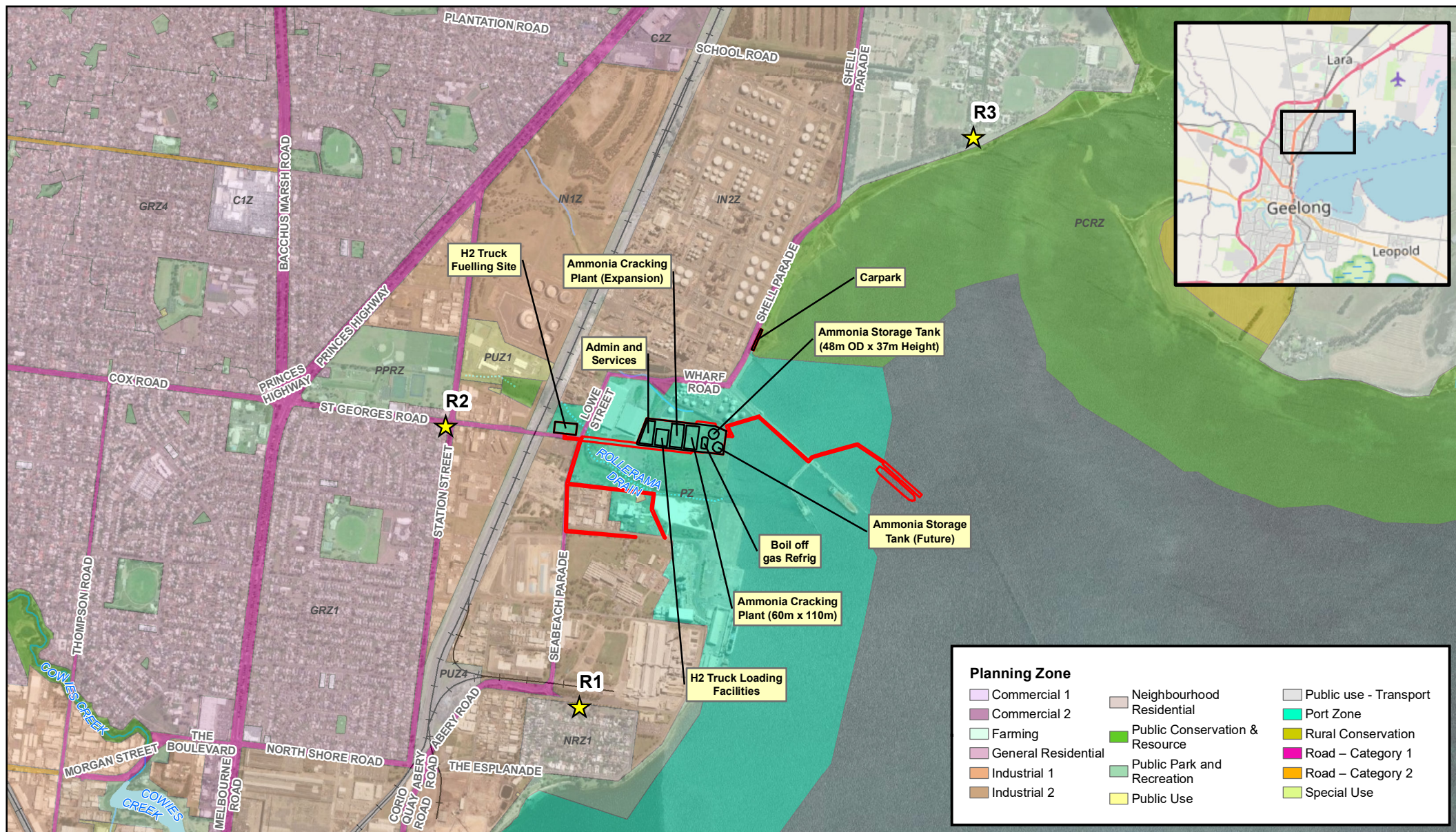
GeelongPort  
GeelongPort Hydrogen Facility EES Referral

Conceptual site layout

Project No. 31-12559567  
Revision No. 0  
Date 26 Apr 2022

FIGURE 2





#### LEGEND

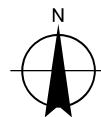
- ★ Sensitive Receptors
- Design - Buildings/areas
- Concept layout footprint

Paper Size ISO A4

0 250 500

Metres

Map Projection: Transverse Mercator  
Horizontal Datum: GDA 1994  
Grid: GDA 1994 MGA Zone 55



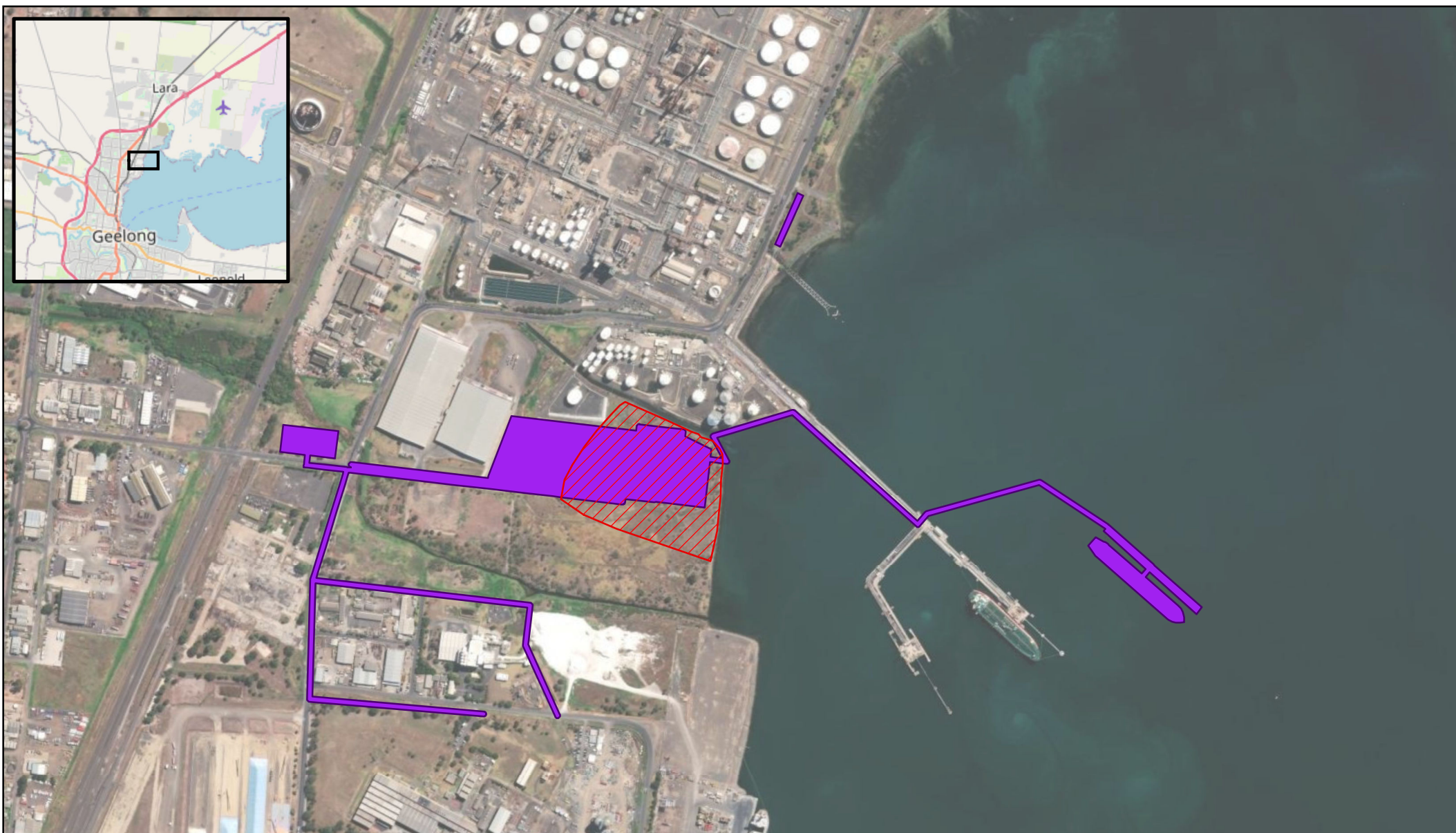
GeelongPort  
GeelongPort Hydrogen Facility EES Referral

Sensitive receptors

Project No. 31-12559567  
Revision No. 0  
Date 26 Apr 2022

FIGURE 3





# LEGEND

- Concept layout footprint
- Approximate extent of former municipal landfill

Paper Size ISO A4

0 100 200

Metres

Map Projection: Transverse Mercator  
Horizontal Datum: GDA 1994  
Grid: GDA 1994 MGA Zone 55



GeelongPort  
GeelongPort Hydrogen Facility EES Referral

Area of previous landfill in relation  
to the proposed works

Project No. 31-12559567  
Revision No. 0  
Date 27 Apr 2022

**FIGURE 4**



**Legend**

- Ramsar Site Boundary
- Freeway
- Other Roads

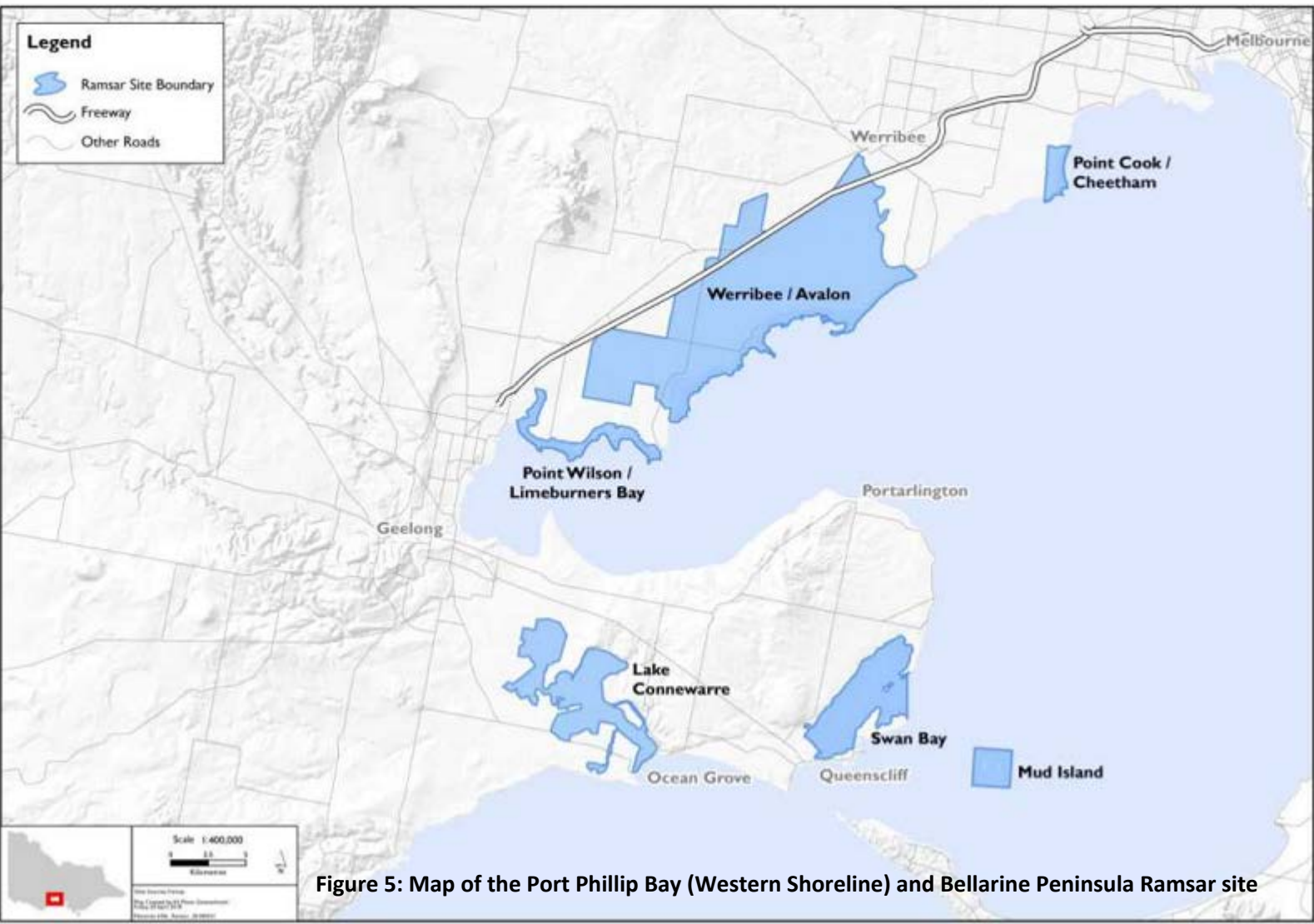


Figure 5: Map of the Port Phillip Bay (Western Shoreline) and Bellarine Peninsula Ramsar site





**LEGEND**

- Concept Layout Footprint
- Not Assessed

**Concept Design**

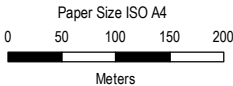
- Buildings/areas
- Ammonia Ship
- Carpark
- Fence

**Design - Pipes/Utilities**

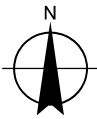
- Hydrogen Off Take Route Options
- Ammonia Import Pipeline
- Road and Power Utilities

**EVCs**

- 821 - Tall Marsh
- 9 - Coastal Saltmarsh
- Shell Parade natural shoreline - Potential native vegetation



Map Projection: Transverse Mercator  
Horizontal Datum: GDA 1994  
Grid: GDA 1994 MGA Zone 55



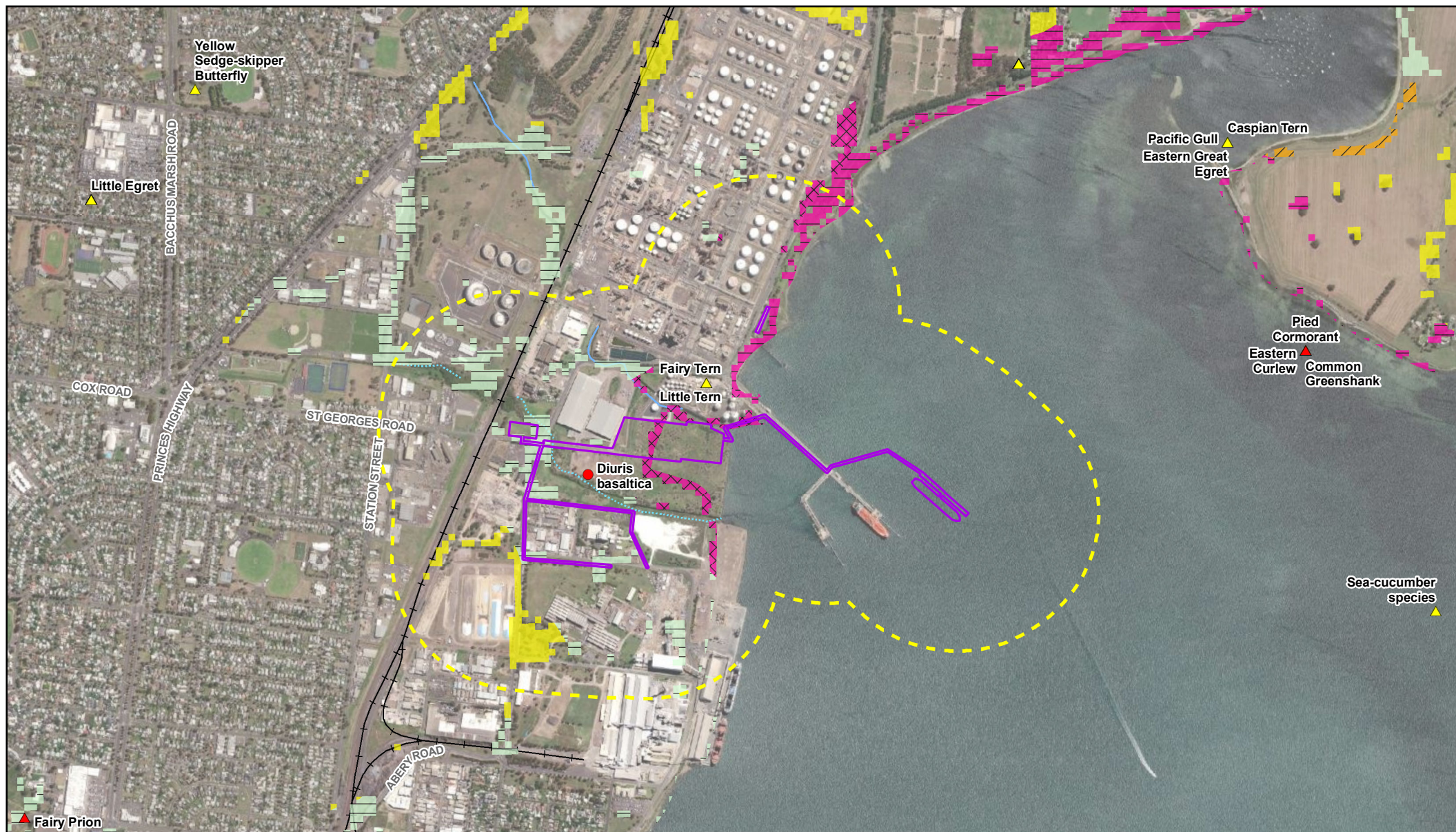
**GeelongPort**  
**GeelongPort Hydrogen Facility EES Referral**

**Native vegetation mapping**

Project No. 31-12559567  
Revision No. 0  
Date 04 Nov 2021

**FIGURE 6**





## LEGEND

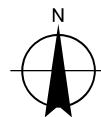
|                          |                      |   |
|--------------------------|----------------------|---|
| Concept layout footprint | <b>VBA Flora</b>     | 163 Coastal Tussock Grassland                   |
| Buffer 500m              | EPBC Listed          | 175 Grassy Woodland                             |
| <b>VBA Fauna</b>         | FFG Listed           | 302 Coastal Saltmarsh/Mangrove Shrubland Mosaic |
| EPBC Listed              | Vic Advisory Listed  | 55 Plains Grassy Woodland                       |
| FFG Listed               | <b>EVC 2005</b>      | 9 Coastal Saltmarsh                             |
| Vic Advisory Listed      | 132 Plains Grassland |   |

Paper Size ISO A4

0 100 200 300 400

Metres

Map Projection: Transverse Mercator  
Horizontal Datum: GDA 1994  
Grid: GDA 1994 MGA Zone 55



GeelongPort  
GeelongPort Hydrogen Facility EES Referral

Ecological Values Map

Project No. 31-12559567  
Revision No. 0  
Date 27 Apr 2022

FIGURE 7





#### LEGEND

- Concept layout footprint
- 1km buffer
- AAV Cultural Sensitivity

Paper Size ISO A4

0 250 500

Metres

Map Projection: Transverse Mercator  
Horizontal Datum: GDA 1994  
Grid: GDA 1994 MGA Zone 55

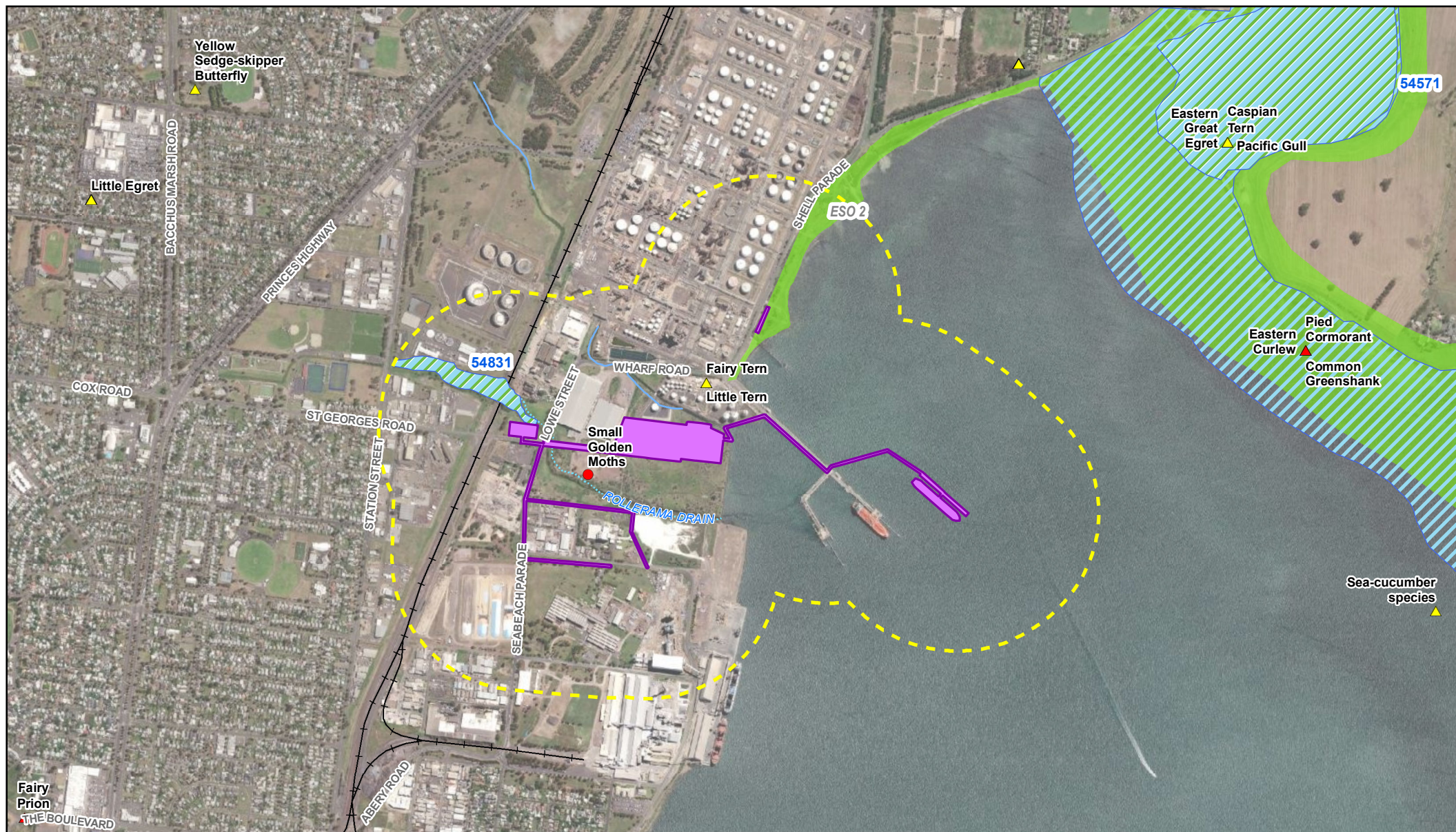


**GeelongPort**  
**GeelongPort Hydrogen Facility EES Referral**  
**Areas of Cultural Heritage Sensitivity**  
**(including registered places) associated**  
**with the proposed works**

Project No. **31-12559567**  
Revision No. **0**  
Date **27 Apr 2022**

**FIGURE 8**





## LEGEND

Concept layout footprint  
Buffer 500m

**VBA Fauna**  
EPBC Listed  
FFG Listed  
Vic Advisory Listed

## VBA Flora

EPBC Listed  
FFG Listed  
Vic Advisory Listed

Victorian Wetland Inventory  
Ramsar Wetland  
Environmental Significance Overlay - Schedule 2

Paper Size ISO A4

0 100 200 300 400  
Metres

Map Projection: Transverse Mercator  
Horizontal Datum: GDA 1994  
Grid: GDA 1994 MGA Zone 55



GeelongPort  
GeelongPort Hydrogen Facility EES Referral

Council overlays and  
DELWP mapped wetlands

Project No. 31-12559567  
Revision No. 0  
Date 27 Apr 2022

FIGURE 9