

Path: L:\Consult\GIS\GIS_WRM\Monarc\CribPtToPakenham\ListedFloraFauna_RevB.mxd

APA Transmission Pty Limited - 31-02984.00

Crib Point Pakenham Pipeline Project

Listed Flora and Fauna

Page 1 of 24

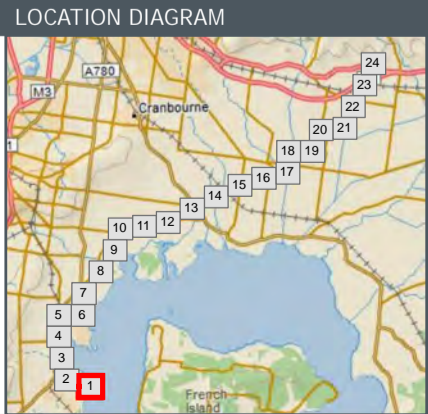
WORK REQUEST NUMBER: 31-02984.00

DATA SOURCES:
 Service Layer Credits: Copyright © 2018 Garmin
 Source: Esri, DigitalGlobe, GeoEye, Earthstar Geographics,
 CNES/Airbus DS, USDA, USGS, AeroGRID, IGN, and the GIS User
 Community

Kilometre Points		Listed Fauna		Water Course		Vegetation Patch	
	Kilometre Points		Listed Avian Fauna		Water Course		Endangered
	Large Scattered Trees		FFG Listed Aquatic Fauna		Crib Point Pakenham Alignment		Vulnerable
	Small Scattered Trees		Glossy Grass Skink		Construction Footprint		Least Concern
	Other Scattered Trees		Growing Grass Frog		Water Body		Planted
	Flora Survey Site		Southern Brown Bandicoot				EPBC Listed Subtropical and Temperate Coastal Saltmarsh
	Fauna Survey Site		Southern Toadlet				

ISSUE DATE	AUTHOR	QA CHECK	APPROVED	MAP REV.	REVISION NOTE
04/09/2018	AB	JH	MV	B	Issued for Review
14/08/2018	AB	JH	CC	A	Issued for Review

0 100 200
Metres
1:8,500
(A3) GDA 1994 MGA Zone 55



Monarc does not guarantee the accuracy or completeness of the map and does not make any warranty about the data.
 Monarc is not under any liability to the user for any loss or damage (including consequential loss or damage) which the user may suffer resulting from the use of this map.



Path: L:\Consult\GIS\GIS_WRM\Monarc\CribPt\ToPakenham\ListedFloraFauna_RevB.mxd

APA Transmission Pty Limited - 31-02984.00

Crib Point Pakenham Pipeline Project Listed Flora and Fauna Page 2 of 24

WORK REQUEST NUMBER: 31-02984.00

DATA SOURCES:
Service Layer Credits: Copyright © 2018 Garmin
Source: Esri, DigitalGlobe, GeoEye, Earthstar Geographics, CNES/Airbus DS, USDA, USGS, AeroGRID, IGN, and the GIS User Community

LEGEND	
	Kilometre Points
	Large Scattered Trees
	Small Scattered Trees
	Other Scattered Trees
	Flora Survey Site
	Fauna Survey Site
	Listed Fauna
	Listed Avian Fauna
	FFG Listed Aquatic Fauna
	Glossy Grass Skink
	Growing Grass Frog
	Southern Brown Bandicoot
	Southern Toadlet
	Water Course
	Crib Point Pakenham Alignment
	Construction Footprint
	Water Body
	Endangered
	Vulnerable
	Least Concern
	Planted
	EPBC Listed Subtropical and Temperate Coastal Saltmarsh

LOCATION DIAGRAM

1:8,500

(A3) GDA 1994 MGA Zone 55

Monarc does not guarantee the accuracy or completeness of the map and does not make any warranty about the data. Monarc is not under any liability to the user for any loss or damage (including consequential loss or damage) which the user may suffer resulting from the use of this map.



APA Transmission Pty Limited - 31-02984.00

Crib Point Pakenham Pipeline Project Listed Flora and Fauna Page 3 of 24

WORK REQUEST NUMBER: 31-02984.00

DATA SOURCES:
Service Layer Credits: Copyright © 2018 Garmin
Source: Esri, DigitalGlobe, GeoEye, Earthstar Geographics, CNES/Airbus DS, USDA, USGS, AeroGRID, IGN, and the GIS User Community

ISSUE DATE	AUTHOR	QA CHECK	APPROVED	MAP REV.	REVISION NOTE
04/09/2018	AB	JH	MV	B	Issued for Review
14/08/2018	AB	JH	CC	A	Issued for Review

LEGEND

- Kilometre Points
- Large Scattered Trees
- Small Scattered Trees
- Other Scattered Trees
- Flora Survey Site
- Fauna Survey Site
- Listed Fauna
- Listed Avian Fauna
- FFG Listed Aquatic Fauna
- Glossy Grass Skink
- Growing Grass Frog
- Southern Brown Bandicoot
- Southern Toadlet
- Water Course
- Crib Point Pakenham Alignment
- Construction Footprint
- Water Body
- Endangered
- Vulnerable
- Least Concern
- Planted
- EPBC Listed Subtropical and Temperate Coastal Saltmarsh

0 100 200
Metres
1:8,500

(A3) GDA 1994 MGA Zone 55

LOCATION DIAGRAM

Path: L:\Consult\GIS\GIS_WRM\Monarc\CribPt\ToPakenham\ListedFloraFauna_RevB.mxd

Monarc does not guarantee the accuracy or completeness of the map and does not make any warranty about the data. Monarc is not under any liability to the user for any loss or damage (including consequential loss or damage) which the user may suffer resulting from the use of this map.



Path: L:\Consult\GIS\GIS_WRM\Monarc\CribPt\ToPakenham\ListedFloraFauna_RevB.mxd

APA Transmission Pty Limited - 31-02984.00

Crib Point Pakenham Pipeline Project Listed Flora and Fauna Page 4 of 24

WORK REQUEST NUMBER: 31-02984.00

DATA SOURCES:
Service Layer Credits: Copyright © 2018 Garmin
Source: Esri, DigitalGlobe, GeoEye, Earthstar Geographics, CNES/Airbus DS, USDA, USGS, AeroGRID, IGN, and the GIS User Community

ISSUE DATE	AUTHOR	QA CHECK	APPROVED	MAP REV.	REVISION NOTE
04/09/2018	AB	JH	MV	B	Issued for Review
14/08/2018	AB	JH	CC	A	Issued for Review

LEGEND

Kilometre Points	Listed Fauna	Water Course
Large Scattered Trees	Listed Avian Fauna	Crib Point Pakenham Alignment
Small Scattered Trees	FFG Listed Aquatic Fauna	Construction Footprint
Other Scattered Trees	Glossy Grass Skink	Water Body
Flora Survey Site	Growing Grass Frog	
Fauna Survey Site	Southern Brown Bandicoot	
	Southern Toadlet	

Endangered	Vulnerable
Least Concern	Planted
EPBC Listed Subtropical and Temperate Coastal Saltmarsh	

LOCATION DIAGRAM

monarc ENVIRONMENTAL
apa

0 100 200
Metres
1:8,500
(A3) GDA 1994 MGA Zone 55

Monarc does not guarantee the accuracy or completeness of the map and does not make any warranty about the data.
Monarc is not under any liability to the user for any loss or damage (including consequential loss or damage) which the user may suffer resulting from the use of this map.



Path: L:\Consult\GIS\GIS_WRM\Monarc\CribPt\ToPakenham\ListedFloraFauna_RevB.mxd

APA Transmission Pty Limited - 31-02984.00

Crib Point Pakenham Pipeline Project Listed Flora and Fauna Page 5 of 24

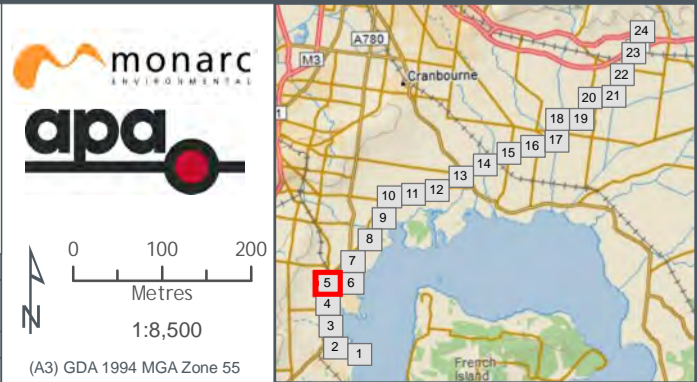
WORK REQUEST NUMBER: 31-02984.00
 DATA SOURCES:
 Service Layer Credits: Copyright © 2018 Garmin
 Source: Esri, DigitalGlobe, GeoEye, Earthstar Geographics, CNES/Airbus DS, USDA, USGS, AeroGRID, IGN, and the GIS User Community

ISSUE DATE	AUTHOR	QA CHECK	APPROVED	MAP REV.	REVISION NOTE
04/09/2018	AB	JH	MV	B	Issued for Review
14/08/2018	AB	JH	CC	A	Issued for Review

LEGEND

- Kilometre Points
- Large Scattered Trees
- Small Scattered Trees
- Other Scattered Trees
- Flora Survey Site
- Fauna Survey Site
- Listed Fauna
- Listed Avian Fauna
- FFG Listed Aquatic Fauna
- Glossy Grass Skink
- Growing Grass Frog
- Southern Brown Bandicoot
- Southern Toadlet
- Water Course
- Crib Point Pakenham Alignment
- Construction Footprint
- Water Body
- Endangered
- Vulnerable
- Least Concern
- Planted
- EPBC Listed Subtropical and Temperate Coastal Saltmarsh

LOCATION DIAGRAM



(A3) GDA 1994 MGA Zone 55

Monarc does not guarantee the accuracy or completeness of the map and does not make any warranty about the data. Monarc is not under any liability to the user for any loss or damage (including consequential loss or damage) which the user may suffer resulting from the use of this map.



Path: L:\Consult\GIS\GIS_WRM\Monarc\CribPt\toPakenham\ListedFloraFauna_RevB.mxd

APA Transmission Pty Limited - 31-02984.00

Crib Point Pakenham Pipeline Project Listed Flora and Fauna Page 6 of 24

WORK REQUEST NUMBER: 31-02984.00

DATA SOURCES:
Service Layer Credits: Copyright:© 2018 Garmin
Source: Esri, DigitalGlobe, GeoEye, Earthstar Geographics, CNES/Airbus DS, USDA, USGS, AeroGRID, IGN, and the GIS User Community

LEGEND	
Kilometre Points	Listed Fauna
Large Scattered Trees	Listed Avian Fauna
Small Scattered Trees	FFG Listed Aquatic Fauna
Other Scattered Trees	Glossy Grass Skink
Flora Survey Site	Growing Grass Frog
Fauna Survey Site	Southern Brown Bandicoot
	Southern Toadlet
Water Course	Crib Point Pakenham Alignment
Construction Footprint	Water Body
Endangered	Vulnerable
Least Concern	Planted
EPBC Listed Subtropical and Temperate Coastal Saltmarsh	

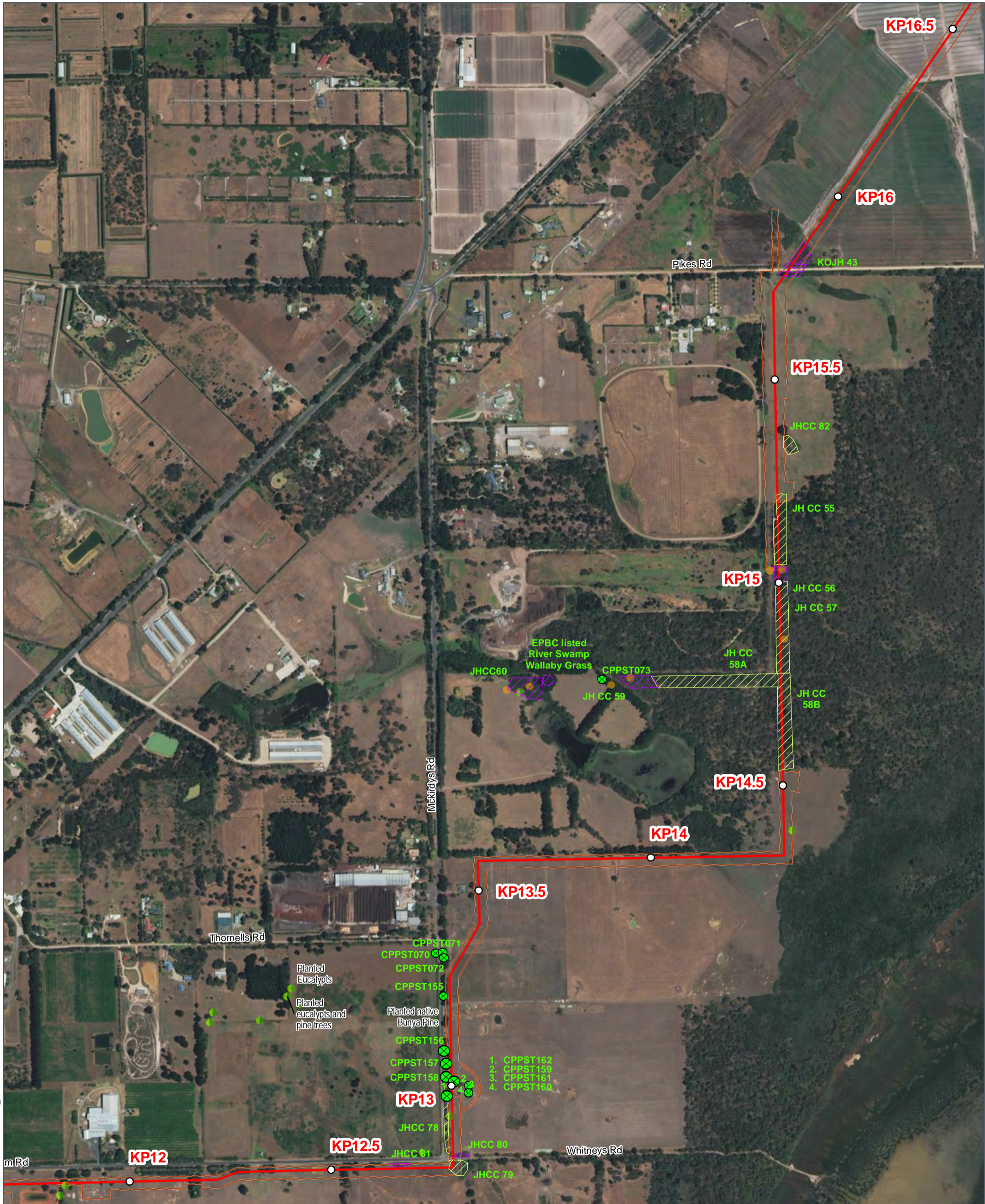
ISSUE DATE	AUTHOR	QA CHECK	APPROVED	MAP REV.	REVISION NOTE
04/09/2018	AB	JH	MV	B	Issued for Review
14/08/2018	AB	JH	CC	A	Issued for Review

LOCATION DIAGRAM

1:8,500

(A3) GDA 1994 MGA Zone 55

Monarc does not guarantee the accuracy or completeness of the map and does not make any warranty about the data. Monarc is not under any liability to the user for any loss or damage (including consequential loss or damage) which the user may suffer resulting from the use of this map.



Path: L:\Consult\GIS\GIS_WRM\Monarc\CribPt\ToPakenham\ListedFloraFauna_RevB.mxd

APA Transmission Pty Limited - 31-02984.00

Crib Point Pakenham Pipeline Project Listed Flora and Fauna Page 7 of 24

WORK REQUEST NUMBER: 31-02984.00

DATA SOURCES:
Service Layer Credits: Copyright © 2018 Garmin
Source: Esri, DigitalGlobe, GeoEye, Earthstar Geographics, CNES/Airbus DS, USDA, USGS, AeroGRID, IGN, and the GIS User Community

ISSUE DATE	AUTHOR	QA CHECK	APPROVED	MAP REV.	REVISION NOTE
04/09/2018	AB	JH	MV	B	Issued for Review
14/08/2018	AB	JH	CC	A	Issued for Review

LEGEND

- Kilometre Points
- Large Scattered Trees
- Small Scattered Trees
- Other Scattered Trees
- Flora Survey Site
- Fauna Survey Site
- Listed Fauna
- Listed Avian Fauna
- FFG Listed Aquatic Fauna
- Glossy Grass Skink
- Growing Grass Frog
- Southern Brown Bandicoot
- Southern Toadlet
- Water Course
- Crib Point Pakenham Alignment
- Construction Footprint
- Water Body
- Endangered
- Vulnerable
- Least Concern
- Planted
- EPBC Listed Subtropical and Temperate Coastal Saltmarsh

LOCATION DIAGRAM

0 100 200 Metres
1:8,500
(A3) GDA 1994 MGA Zone 55

Monarc does not guarantee the accuracy or completeness of the map and does not make any warranty about the data. Monarc is not under any liability to the user for any loss or damage (including consequential loss or damage) which the user may suffer resulting from the use of this map.



Path: L:\Consult\GIS\GIS_WRM\Monarc\CribPtToPakenham\ListedFloraFauna_RevB.mxd

APA Transmission Pty Limited - 31-02984.00

Crib Point Pakenham Pipeline Project Listed Flora and Fauna Page 8 of 24

WORK REQUEST NUMBER: 31-02984.00

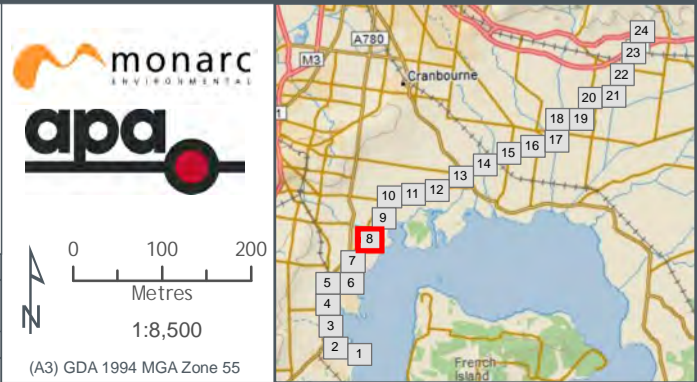
DATA SOURCES:
Service Layer Credits: Copyright © 2018 Garmin
Source: Esri, DigitalGlobe, GeoEye, Earthstar Geographics, CNES/Airbus DS, USDA, USGS, AeroGRID, IGN, and the GIS User Community

ISSUE DATE	AUTHOR	QA CHECK	APPROVED	MAP REV.	REVISION NOTE
04/09/2018	AB	JH	MV	B	Issued for Review
14/08/2018	AB	JH	CC	A	Issued for Review

LEGEND

- | | | | |
|-----------------------|--------------------------|-------------------------------|---|
| Kilometre Points | Listed Fauna | Water Course | Vegetation Patch |
| Large Scattered Trees | Listed Avian Fauna | Crib Point Pakenham Alignment | Endangered |
| Small Scattered Trees | FFG Listed Aquatic Fauna | Construction Footprint | Vulnerable |
| Other Scattered Trees | Glossy Grass Skink | Water Body | Least Concern |
| Flora Survey Site | Growing Grass Frog | | Planted |
| Fauna Survey Site | Southern Brown Bandicoot | | EPBC Listed Subtropical and Temperate Coastal Saltmarsh |
| | Southern Toadlet | | |

LOCATION DIAGRAM



Monarc does not guarantee the accuracy or completeness of the map and does not make any warranty about the data. Monarc is not under any liability to the user for any loss or damage (including consequential loss or damage) which the user may suffer resulting from the use of this map.



APA Transmission Pty Limited - 31-02984.00

Crib Point Pakenham Pipeline Project
Listed Flora and Fauna
Page 9 of 24

WORK REQUEST NUMBER: 31-02984.00

DATA SOURCES:
 Service Layer Credits: Copyright © 2018 Garmin
 Source: Esri, DigitalGlobe, GeoEye, Earthstar Geographics, CNES/Airbus DS, USDA, USGS, AeroGRID, IGN, and the GIS User Community

ISSUE DATE	AUTHOR	QA CHECK	APPROVED	MAP REV.	REVISION NOTE
04/09/2018	AB	JH	MV	B	Issued for Review
14/08/2018	AB	JH	CC	A	Issued for Review

LEGEND

- Kilometre Points
- Large Scattered Trees
- Small Scattered Trees
- Other Scattered Trees
- Flora Survey Site
- Fauna Survey Site
- Listed Fauna
- Listed Avian Fauna
- FFG Listed Aquatic Fauna
- Glossy Grass Skink
- Growing Grass Frog
- Southern Brown Bandicoot
- Southern Toadlet
- Water Course
- Crib Point Pakenham Alignment
- Construction Footprint
- Water Body
- Endangered
- Vulnerable
- Least Concern
- Planted
- EPBC Listed Subtropical and Temperate Coastal Saltmarsh

0 100 200
Metres
1:8,500

(A3) GDA 1994 MGA Zone 55

LOCATION DIAGRAM

Path: L:\Consult\GIS\GIS_WRM\Monarc\CribPt\toPakenham\ListedFloraFauna_RevB.mxd

Monarc does not guarantee the accuracy or completeness of the map and does not make any warranty about the data. Monarc is not under any liability to the user for any loss or damage (including consequential loss or damage) which the user may suffer resulting from the use of this map.



APA Transmission Pty Limited - 31-02984.00

Crib Point Pakenham Pipeline Project Listed Flora and Fauna Page 10 of 24

WORK REQUEST NUMBER: 31-02984.00

DATA SOURCES:
Service Layer Credits: Copyright © 2018 Garmin
Source: Esri, DigitalGlobe, GeoEye, Earthstar Geographics, CNES/Airbus DS, USDA, USGS, AeroGRID, IGN, and the GIS User Community

ISSUE DATE	AUTHOR	QA CHECK	APPROVED	MAP REV.	REVISION NOTE
04/09/2018	AB	JH	MV	B	Issued for Review
14/08/2018	AB	JH	CC	A	Issued for Review

LEGEND

- Kilometre Points
- Large Scattered Trees
- Small Scattered Trees
- Other Scattered Trees
- Flora Survey Site
- Fauna Survey Site
- Listed Fauna
- FFG Listed Aquatic Fauna
- Glossy Grass Skink
- Growing Grass Frog
- Southern Brown Bandicoot
- Southern Toadlet
- Water Course
- Crib Point Pakenham Alignment
- Construction Footprint
- Water Body
- Endangered
- Vulnerable
- Least Concern
- Planted
- EPBC Listed Subtropical and Temperate Coastal Saltmarsh

LOCATION DIAGRAM

monarc ENVIRONMENTAL
apa

0 100 200 Metres
1:8,500
(A3) GDA 1994 MGA Zone 55

Path: L:\Consult\GIS\GIS_WRM\Monarc\CribPt\ToPakenham>ListedFloraFauna_RevB.mxd

Monarc does not guarantee the accuracy or completeness of the map and does not make any warranty about the data. Monarc is not under any liability to the user for any loss or damage (including consequential loss or damage) which the user may suffer resulting from the use of this map.



Path: L:\Consult\GIS\GIS_WRM\Monarc\CribPt\toPakenham\ListedFloraFauna_RevB.mxd

APA Transmission Pty Limited - 31-02984.00

Crib Point Pakenham Pipeline Project Listed Flora and Fauna Page 11 of 24

WORK REQUEST NUMBER: 31-02984.00

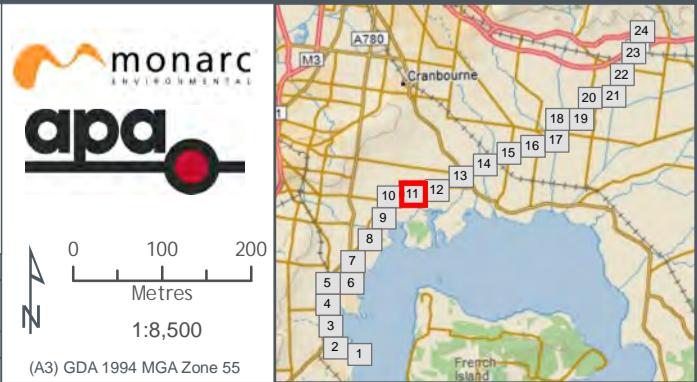
DATA SOURCES:
Service Layer Credits: Copyright © 2018 Garmin
Source: Esri, DigitalGlobe, GeoEye, Earthstar Geographics, CNES/Airbus DS, USDA, USGS, AeroGRID, IGN, and the GIS User Community

ISSUE DATE	AUTHOR	QA CHECK	APPROVED	MAP REV.	REVISION NOTE
04/09/2018	AB	JH	MV	B	Issued for Review
14/08/2018	AB	JH	CC	A	Issued for Review

LEGEND

- | | | | |
|-------------------------|----------------------------|---------------------------------|---|
| ○ Kilometre Points | ● Listed Fauna | — Water Course | ■ Vegetation Patch |
| ● Large Scattered Trees | ● Listed Avian Fauna | — Crib Point Pakenham Alignment | ■ Endangered |
| ● Small Scattered Trees | ● FFG Listed Aquatic Fauna | — Construction Footprint | ■ Vulnerable |
| ● Other Scattered Trees | ● Glossy Grass Skink | — Water Body | ■ Least Concern |
| ● Flora Survey Site | ● Growing Grass Frog | | ■ Planted |
| ● Fauna Survey Site | ● Southern Brown Bandicoot | | ■ EPBC Listed Subtropical and Temperate Coastal Saltmarsh |
| | ● Southern Toadlet | | |

LOCATION DIAGRAM



Monarc does not guarantee the accuracy or completeness of the map and does not make any warranty about the data. Monarc is not under any liability to the user for any loss or damage (including consequential loss or damage) which the user may suffer resulting from the use of this map.



Path: L:\Consult\GIS\GIS_WRM\Monarc\CribPt\toPakenham\ListedFloraFauna_RevB.mxd

APA Transmission Pty Limited - 31-02984.00

Crib Point Pakenham Pipeline Project Listed Flora and Fauna Page 12 of 24

WORK REQUEST NUMBER: 31-02984.00

DATA SOURCES:
Service Layer Credits: Copyright © 2018 Garmin
Source: Esri, DigitalGlobe, GeoEye, Earthstar Geographics, CNES/Airbus DS, USDA, USGS, AeroGRID, IGN, and the GIS User Community

LEGEND	
Kilometre Points	Listed Fauna
Large Scattered Trees	Listed Avian Fauna
Small Scattered Trees	FFG Listed Aquatic Fauna
Other Scattered Trees	Glossy Grass Skink
Flora Survey Site	Growing Grass Frog
Fauna Survey Site	Southern Brown Bandicoot
	Southern Toadlet
Water Course	Crib Point Pakenham Alignment
Construction Footprint	Water Body
Endangered	Vulnerable
Least Concern	Planted
EPBC Listed Subtropical and Temperate Coastal Saltmarsh	

ISSUE DATE	AUTHOR	QA CHECK	APPROVED	MAP REV.	REVISION NOTE
04/09/2018	AB	JH	MV	B	Issued for Review
14/08/2018	AB	JH	CC	A	Issued for Review

0 100 200
Metres
1:8,500

(A3) GDA 1994 MGA Zone 55

LOCATION DIAGRAM

Monarc does not guarantee the accuracy or completeness of the map and does not make any warranty about the data. Monarc is not under any liability to the user for any loss or damage (including consequential loss or damage) which the user may suffer resulting from the use of this map.



Path: L:\Consult\GIS\GIS_WRM\Monarc\CribPt\toPakenham\ListedFloraFauna_RevB.mxd

APA Transmission Pty Limited - 31-02984.00

Crib Point Pakenham Pipeline Project Listed Flora and Fauna Page 13 of 24

WORK REQUEST NUMBER: 31-02984.00

DATA SOURCES:
Service Layer Credits: Copyright © 2018 Garmin
Source: Esri, DigitalGlobe, GeoEye, Earthstar Geographics, CNES/Airbus DS, USDA, USGS, AeroGRID, IGN, and the GIS User Community

LEGEND					
	Kilometre Points		Listed Fauna		Water Course
	Large Scattered Trees		Listed Avian Fauna		Crib Point Pakenham Alignment
	Small Scattered Trees		FFG Listed Aquatic Fauna		Construction Footprint
	Other Scattered Trees		Glossy Grass Skink		Water Body
	Flora Survey Site		Growing Grass Frog		Endangered
	Fauna Survey Site		Southern Brown Bandicoot		Vulnerable
			Southern Toadlet		Least Concern
					Planted
					EPBC Listed Subtropical and Temperate Coastal Saltmarsh

LOCATION DIAGRAM

1:8,500

(A3) GDA 1994 MGA Zone 55

Monarc does not guarantee the accuracy or completeness of the map and does not make any warranty about the data. Monarc is not under any liability to the user for any loss or damage (including consequential loss or damage) which the user may suffer resulting from the use of this map.



APA Transmission Pty Limited - 31-02984.00

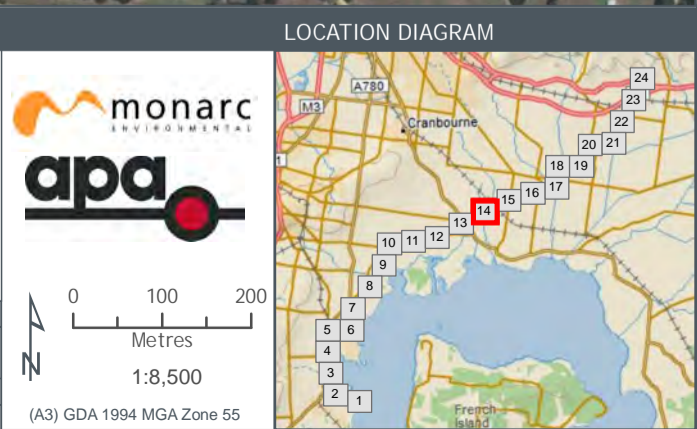
Crib Point Pakenham Pipeline Project Listed Flora and Fauna Page 14 of 24

WORK REQUEST NUMBER: 31-02984.00

DATA SOURCES:
Service Layer Credits: Copyright © 2018 Garmin
Source: Esri, DigitalGlobe, GeoEye, Earthstar Geographics, CNES/Airbus DS, USDA, USGS, AeroGRID, IGN, and the GIS User Community

LEGEND	
	Kilometre Points
	Large Scattered Trees
	Small Scattered Trees
	Other Scattered Trees
	Flora Survey Site
	Fauna Survey Site
	Listed Fauna
	Listed Avian Fauna
	FFG Listed Aquatic Fauna
	Glossy Grass Skink
	Growing Grass Frog
	Southern Brown Bandicoot
	Southern Toadlet
	Water Course
	Crib Point Pakenham Alignment
	Construction Footprint
	Water Body
	Vegetation Patch
	Endangered
	Vulnerable
	Least Concern
	Planted
	EPBC Listed Subtropical and Temperate Coastal Saltmarsh

ISSUE DATE	AUTHOR	QA CHECK	APPROVED	MAP REV.	REVISION NOTE
04/09/2018	AB	JH	MV	B	Issued for Review
14/08/2018	AB	JH	CC	A	Issued for Review



Path: L:\Consult\GIS\GIS_WRM\Monarc\CribPt\toPakenham\ListedFloraFauna_RevB.mxd

Monarc does not guarantee the accuracy or completeness of the map and does not make any warranty about the data. Monarc is not under any liability to the user for any loss or damage (including consequential loss or damage) which the user may suffer resulting from the use of this map.



APA Transmission Pty Limited - 31-02984.00

Crib Point Pakenham Pipeline Project Listed Flora and Fauna Page 15 of 24

WORK REQUEST NUMBER: 31-02984.00

DATA SOURCES:
Service Layer Credits: Copyright © 2018 Garmin
Source: Esri, DigitalGlobe, GeoEye, Earthstar Geographics, CNES/Airbus DS, USDA, USGS, AeroGRID, IGN, and the GIS User Community

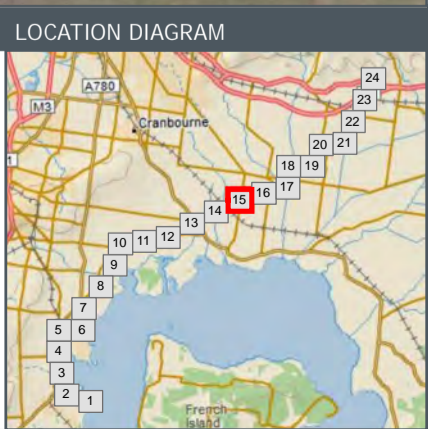
ISSUE DATE	AUTHOR	QA CHECK	APPROVED	MAP REV.	REVISION NOTE
04/09/2018	AB	JH	MV	B	Issued for Review
14/08/2018	AB	JH	CC	A	Issued for Review

monarc
ENVIRONMENTAL

apa

0 100 200
Metres
1:8,500

(A3) GDA 1994 MGA Zone 55



Path: L:\Consult\GIS\GIS_WRM\Monarc\CribPt\toPakenham\ListedFloraFauna_RevB.mxd

Monarc does not guarantee the accuracy or completeness of the map and does not make any warranty about the data.
Monarc is not under any liability to the user for any loss or damage (including consequential loss or damage) which the user may suffer resulting from the use of this map.



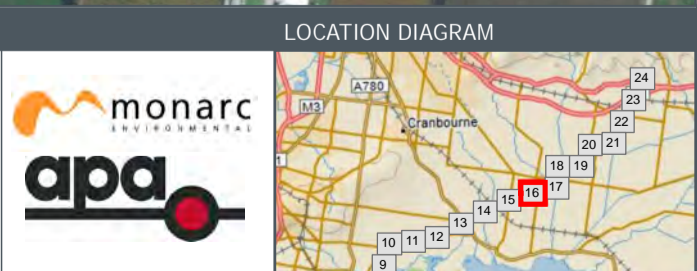
APA Transmission Pty Limited - 31-02984.00

Crib Point Pakenham Pipeline Project

Listed Flora and Fauna

Page 16 of 24

LEGEND	
Kilometre Points	Listed Fauna
Large Scattered Trees	Listed Avian Fauna
Small Scattered Trees	FFG Listed Aquatic Fauna
Other Scattered Trees	Glossy Grass Skink
Flora Survey Site	Growling Grass Frog
Fauna Survey Site	Southern Brown Bandicoot
	Southern Toadlet
Water Course	Crib Point Pakenham Alignment
Construction Footprint	Water Body
Endangered	Vulnerable
Least Concern	Planted
EPBC Listed Subtropical and Temperate Coastal Saltmarsh	



WORK REQUEST NUMBER: 31-02984.00

DATA SOURCES:
 Service Layer Credits: Copyright © 2018 Garmin
 Source: Esri, DigitalGlobe, GeoEye, Earthstar Geographics, CNES/Airbus DS, USDA, USGS, AeroGRID, IGN, and the GIS User Community

ISSUE DATE	AUTHOR	QA CHECK	APPROVED	MAP REV.	REVISION NOTE
04/09/2018	AB	JH	MV	B	Issued for Review
14/08/2018	AB	JH	CC	A	Issued for Review

(A3) GDA 1994 MGA Zone 55

Path: L:\Consult\GIS\GIS_Pakenham\CribPt\toPakenham>ListedFloraFauna_RevB.mxd

Monarc does not guarantee the accuracy or completeness of the map and does not make any warranty about the data. Monarc is not under any liability to the user for any loss or damage (including consequential loss or damage) which the user may suffer resulting from the use of this map.



APA Transmission Pty Limited - 31-02984.00

Crib Point Pakenham Pipeline Project Listed Flora and Fauna Page 17 of 24

WORK REQUEST NUMBER: 31-02984.00

DATA SOURCES:
Service Layer Credits: Copyright © 2018 Garmin
Source: Esri, DigitalGlobe, GeoEye, Earthstar Geographics, CNES/Airbus DS, USDA, USGS, AeroGRID, IGN, and the GIS User Community

ISSUE DATE	AUTHOR	QA CHECK	APPROVED	MAP REV.	REVISION NOTE
04/09/2018	AB	JH	MV	B	Issued for Review
14/08/2018	AB	JH	CC	A	Issued for Review

LEGEND

- Kilometre Points
- Large Scattered Trees
- Small Scattered Trees
- Other Scattered Trees
- Flora Survey Site
- Fauna Survey Site
- Listed Fauna
- FFG Listed Aquatic Fauna
- Glossy Grass Skink
- Growing Grass Frog
- Southern Brown Bandicoot
- Southern Toadlet
- Water Course
- Crib Point Pakenham Alignment
- Construction Footprint
- Water Body
- Endangered
- Vulnerable
- Least Concern
- Planted
- EPBC Listed Subtropical and Temperate Coastal Saltmarsh

0 100 200
Metres
1:8,500

(A3) GDA 1994 MGA Zone 55

LOCATION DIAGRAM

Path: L:\Consult\GIS\GIS_WRM\Monarc\CribPt\toPakenham\ListedFloraFauna_RevB.mxd

Monarc does not guarantee the accuracy or completeness of the map and does not make any warranty about the data. Monarc is not under any liability to the user for any loss or damage (including consequential loss or damage) which the user may suffer resulting from the use of this map.



Path: L:\Consult\GIS\GIS_WRM\Monarc\CribPt\ToPakenham\ListedFloraFauna_RevB.mxd

APA Transmission Pty Limited - 31-02984.00

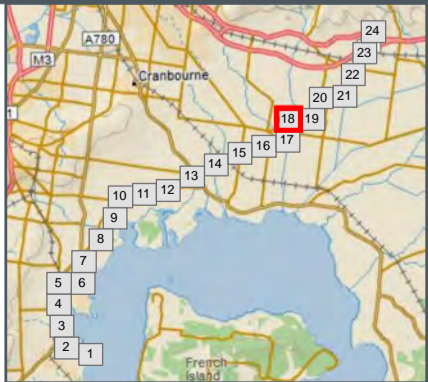
Crib Point Pakenham Pipeline Project Listed Flora and Fauna Page 18 of 24

WORK REQUEST NUMBER: 31-02984.00
 DATA SOURCES:
 Service Layer Credits: Copyright © 2018 Garmin
 Source: Esri, DigitalGlobe, GeoEye, Earthstar Geographics,
 CNES/Airbus DS, USDA, USGS, AeroGRID, IGN, and the GIS User
 Community

Kilometre Points		Listed Fauna		Water Course		Vegetation Patch	
	Kilometre Points		Listed Avian Fauna		Water Course		Endangered
	Large Scattered Trees		FFG Listed Aquatic Fauna		Crib Point Pakenham Alignment		Vulnerable
	Small Scattered Trees		Glossy Grass Skink		Construction Footprint		Least Concern
	Other Scattered Trees		Growing Grass Frog		Water Body		Planted
	Flora Survey Site		Southern Brown Bandicoot				EPBC Listed Subtropical and Temperate Coastal Saltmarsh
	Fauna Survey Site		Southern Toadlet				

LEGEND

LOCATION DIAGRAM



Monarc does not guarantee the accuracy or completeness of the map and does not make any warranty about the data.
 Monarc is not under any liability to the user for any loss or damage (including consequential loss or damage) which the user may suffer resulting from the use of this map.



Path: L:\Consult\GIS\GIS_WRM\Monarc\CribPt\toPakenham\ListedFloraFauna_RevB.mxd

APA Transmission Pty Limited - 31-02984.00

Crib Point Pakenham Pipeline Project

Listed Flora and Fauna

Page 19 of 24

Kilometre Points		Listed Fauna		Water Course		Vegetation Patch	
	Kilometre Points		Listed Avian Fauna		Water Course		Endangered
	Large Scattered Trees		FFG Listed Aquatic Fauna		Crib Point Pakenham Alignment		Vulnerable
	Small Scattered Trees		Glossy Grass Skink		Construction Footprint		Least Concern
	Other Scattered Trees		Growing Grass Frog		Water Body		Planted
	Flora Survey Site		Southern Brown Bandicoot				EPBC Listed Subtropical and Temperate Coastal Saltmarsh
	Fauna Survey Site		Southern Toadlet				



WORK REQUEST NUMBER: 31-02984.00

DATA SOURCES:
 Service Layer Credits: Copyright © 2018 Garmin
 Source: Esri, DigitalGlobe, GeoEye, Earthstar Geographics, CNES/Airbus DS, USDA, USGS, AeroGRID, IGN, and the GIS User Community

ISSUE DATE	AUTHOR	QA CHECK	APPROVED	MAP REV.	REVISION NOTE
04/09/2018	AB	JH	MV	B	Issued for Review
14/08/2018	AB	JH	CC	A	Issued for Review

Monarc does not guarantee the accuracy or completeness of the map and does not make any warranty about the data. Monarc is not under any liability to the user for any loss or damage (including consequential loss or damage) which the user may suffer resulting from the use of this map.



Path: L:\Consult\GIS\GIS_WRM\Monarc\CribPt\toPakenham\ListedFloraFauna_RevB.mxd

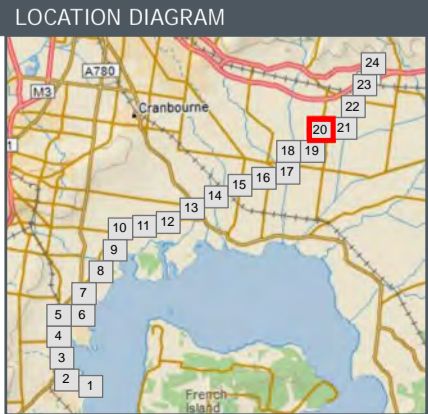
APA Transmission Pty Limited - 31-02984.00

Crib Point Pakenham Pipeline Project Listed Flora and Fauna Page 20 of 24

WORK REQUEST NUMBER: 31-02984.00

DATA SOURCES:
Service Layer Credits: Copyright © 2018 Garmin
Source: Esri, DigitalGlobe, GeoEye, Earthstar Geographics, CNES/Airbus DS, USDA, USGS, AeroGRID, IGN, and the GIS User Community

ISSUE DATE	AUTHOR	QA CHECK	APPROVED	MAP REV.	REVISION NOTE
04/09/2018	AB	JH	MV	B	Issued for Review
14/08/2018	AB	JH	CC	A	Issued for Review



Monarc does not guarantee the accuracy or completeness of the map and does not make any warranty about the data. Monarc is not under any liability to the user for any loss or damage (including consequential loss or damage) which the user may suffer resulting from the use of this map.



APA Transmission Pty Limited - 31-02984.00

Crib Point Pakenham Pipeline Project
Listed Flora and Fauna
 Page 21 of 24

WORK REQUEST NUMBER: 31-02984.00

DATA SOURCES:
 Service Layer Credits: Copyright © 2018 Garmin
 Source: Esri, DigitalGlobe, GeoEye, Earthstar Geographics,
 CNES/Airbus DS, USDA, USGS, AeroGRID, IGN, and the GIS User
 Community

LEGEND					
Kilometre Points	Large Scattered Trees	Listed Fauna	Water Course	Crib Point Pakenham Alignment	Endangered
Small Scattered Trees	FFG Listed Aquatic Fauna	Glossy Grass Skink	Construction Footprint	Vulnerable	Least Concern
Other Scattered Trees	Growing Grass Frog	Southern Brown Bandicoot	Water Body	Planted	EPBC Listed Subtropical and Temperate Coastal Saltmarsh
Flora Survey Site	Southern Toadlet				
Fauna Survey Site					

0 100 200
Metres

1:8,500

(A3) GDA 1994 MGA Zone 55

LOCATION DIAGRAM

Monarc does not guarantee the accuracy or completeness of the map and does not make any warranty about the data.
 Monarc is not under any liability to the user for any loss or damage (including consequential loss or damage) which the user may suffer resulting from the use of this map.

Path: L:\Consult\GIS\GIS_WRM\Monarc\CribPtToPakenham\ListedFloraFauna_RevB.mxd



1. CPPST171
2. CPPST170
3. CPPST169
4. CPPST172
5. CPPST177
6. CPPST174
7. CPPST178
8. CPPST176
9. CPPST180
10. CPPST135

APA Transmission Pty Limited - 31-02984.00

Crib Point Pakenham Pipeline Project Listed Flora and Fauna Page 22 of 24

WORK REQUEST NUMBER: 31-02984.00

DATA SOURCES:
Service Layer Credits: Copyright © 2018 Garmin
Source: Esri, DigitalGlobe, GeoEye, Earthstar Geographics, CNES/Airbus DS, USDA, USGS, AeroGRID, IGN, and the GIS User Community

ISSUE DATE	AUTHOR	QA CHECK	APPROVED	MAP REV.	REVISION NOTE
04/09/2018	AB	JH	MV	B	Issued for Review
14/08/2018	AB	JH	CC	A	Issued for Review

LEGEND

- Kilometre Points
- Large Scattered Trees
- Small Scattered Trees
- Other Scattered Trees
- Flora Survey Site
- Fauna Survey Site
- Listed Fauna
- Listed Avian Fauna
- FFG Listed Aquatic Fauna
- Glossy Grass Skink
- Growling Grass Frog
- Southern Brown Bandicoot
- Southern Toadlet
- Water Course
- Crib Point Pakenham Alignment
- Construction Footprint
- Water Body
- Endangered
- Vulnerable
- Least Concern
- Planted
- EPBC Listed Subtropical and Temperate Coastal Saltmarsh

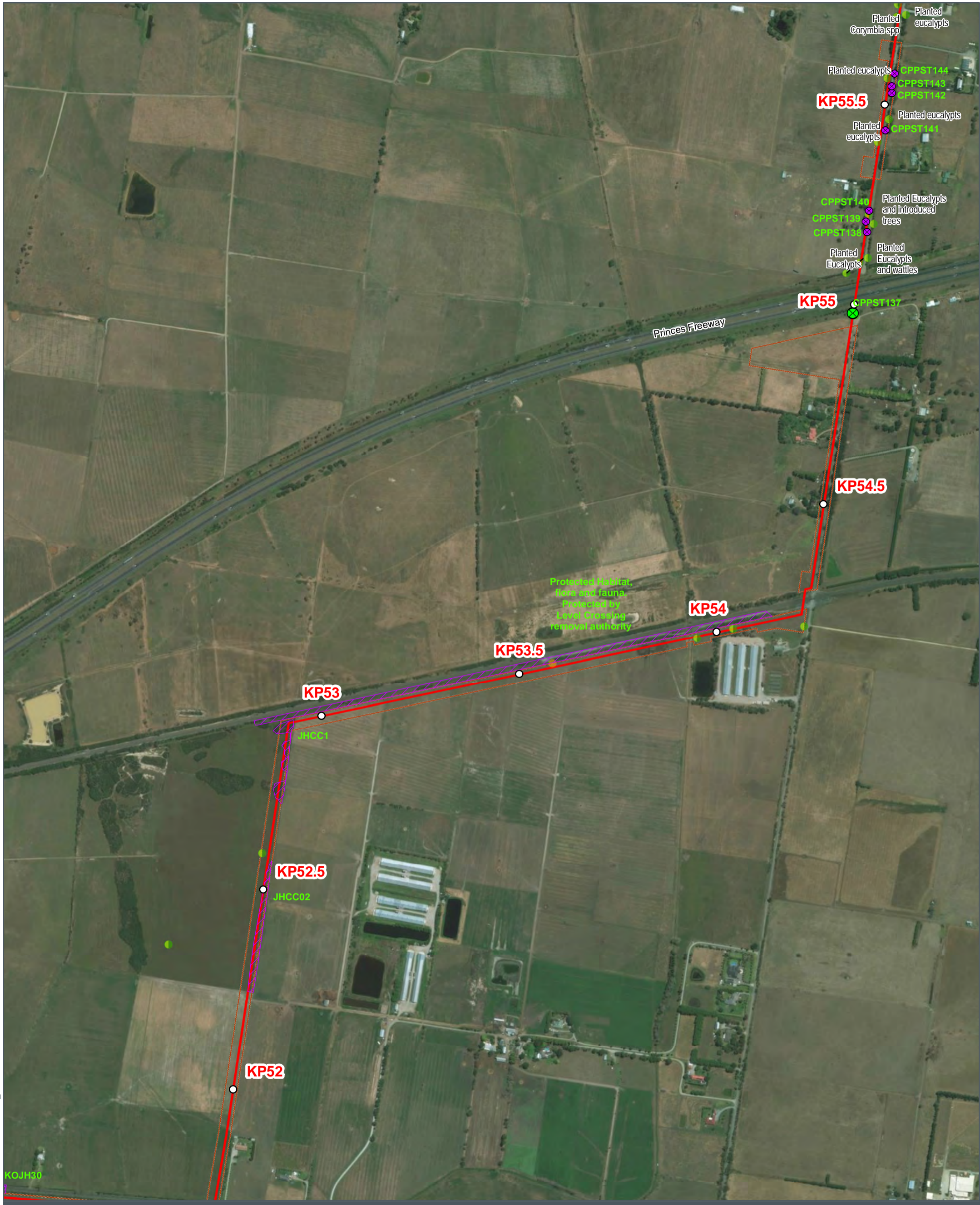
LOCATION DIAGRAM

0 100 200
Metres
1:8,500

(A3) GDA 1994 MGA Zone 55

Path: L:\Consult\GIS\GIS_WRM\Monarc\CribPt\ToPakenham\ListedFloraFauna_RevB.mxd

Monarc does not guarantee the accuracy or completeness of the map and does not make any warranty about the data. Monarc is not under any liability to the user for any loss or damage (including consequential loss or damage) which the user may suffer resulting from the use of this map.



Path: L:\Consult\GIS\GIS_WRM\Monarc\CribPt\ToPakenham\ListedFloraFauna_RevB.mxd

APA Transmission Pty Limited - 31-02984.00

Crib Point Pakenham Pipeline Project Listed Flora and Fauna Page 23 of 24

WORK REQUEST NUMBER: 31-02984.00

DATA SOURCES:
Service Layer Credits: Copyright © 2018 Garmin
Source: Esri, DigitalGlobe, GeoEye, Earthstar Geographics, CNES/Airbus DS, USDA, USGS, AeroGRID, IGN, and the GIS User Community

ISSUE DATE	AUTHOR	QA CHECK	APPROVED	MAP REV.	REVISION NOTE
04/09/2018	AB	JH	MV	B	Issued for Review
14/08/2018	AB	JH	CC	A	Issued for Review

LEGEND

- Kilometre Points
- Large Scattered Trees
- Small Scattered Trees
- Other Scattered Trees
- Flora Survey Site
- Fauna Survey Site
- Listed Fauna
- FFG Listed Aquatic Fauna
- Glossy Grass Skink
- Growling Grass Frog
- Southern Brown Bandicoot
- Southern Toadlet
- Water Course
- Crib Point Pakenham Alignment
- Construction Footprint
- Water Body
- Endangered
- Vulnerable
- Least Concern
- Planted
- EPBC Listed Subtropical and Temperate Coastal Saltmarsh

LOCATION DIAGRAM

0 100 200
Metres
1:8,500

(A3) GDA 1994 MGA Zone 55

Monarc does not guarantee the accuracy or completeness of the map and does not make any warranty about the data. Monarc is not under any liability to the user for any loss or damage (including consequential loss or damage) which the user may suffer resulting from the use of this map.



APA Transmission Pty Limited - 31-02984.00

Crib Point Pakenham Pipeline Project Listed Flora and Fauna Page 24 of 24

WORK REQUEST NUMBER: 31-02984.00

DATA SOURCES:
Service Layer Credits: Copyright © 2018 Garmin
Source: Esri, DigitalGlobe, GeoEye, Earthstar Geographics, CNES/Airbus DS, USDA, USGS, AeroGRID, IGN, and the GIS User Community

ISSUE DATE	AUTHOR	QA CHECK	APPROVED	MAP REV.	REVISION NOTE
04/09/2018	AB	JH	MV	B	Issued for Review
14/08/2018	AB	JH	CC	A	Issued for Review

LEGEND

- Kilometre Points
- Large Scattered Trees
- Small Scattered Trees
- Other Scattered Trees
- Flora Survey Site
- Fauna Survey Site
- Listed Fauna
- FFG Listed Aquatic Fauna
- Glossy Grass Skink
- Growing Grass Frog
- Southern Brown Bandicoot
- Southern Toadlet
- Water Course
- Crib Point Pakenham Alignment
- Construction Footprint
- Water Body
- Endangered
- Vulnerable
- Least Concern
- Planted
- EPBC Listed Subtropical and Temperate Coastal Saltmarsh

0 100 200
Metres
1:8,500

(A3) GDA 1994 MGA Zone 55

LOCATION DIAGRAM

Path: L:\Consult\GIS\GIS_WRM\Monarc\CribPt\ToPakenham\ListedFloraFauna_RevB.mxd

Monarc does not guarantee the accuracy or completeness of the map and does not make any warranty about the data. Monarc is not under any liability to the user for any loss or damage (including consequential loss or damage) which the user may suffer resulting from the use of this map.