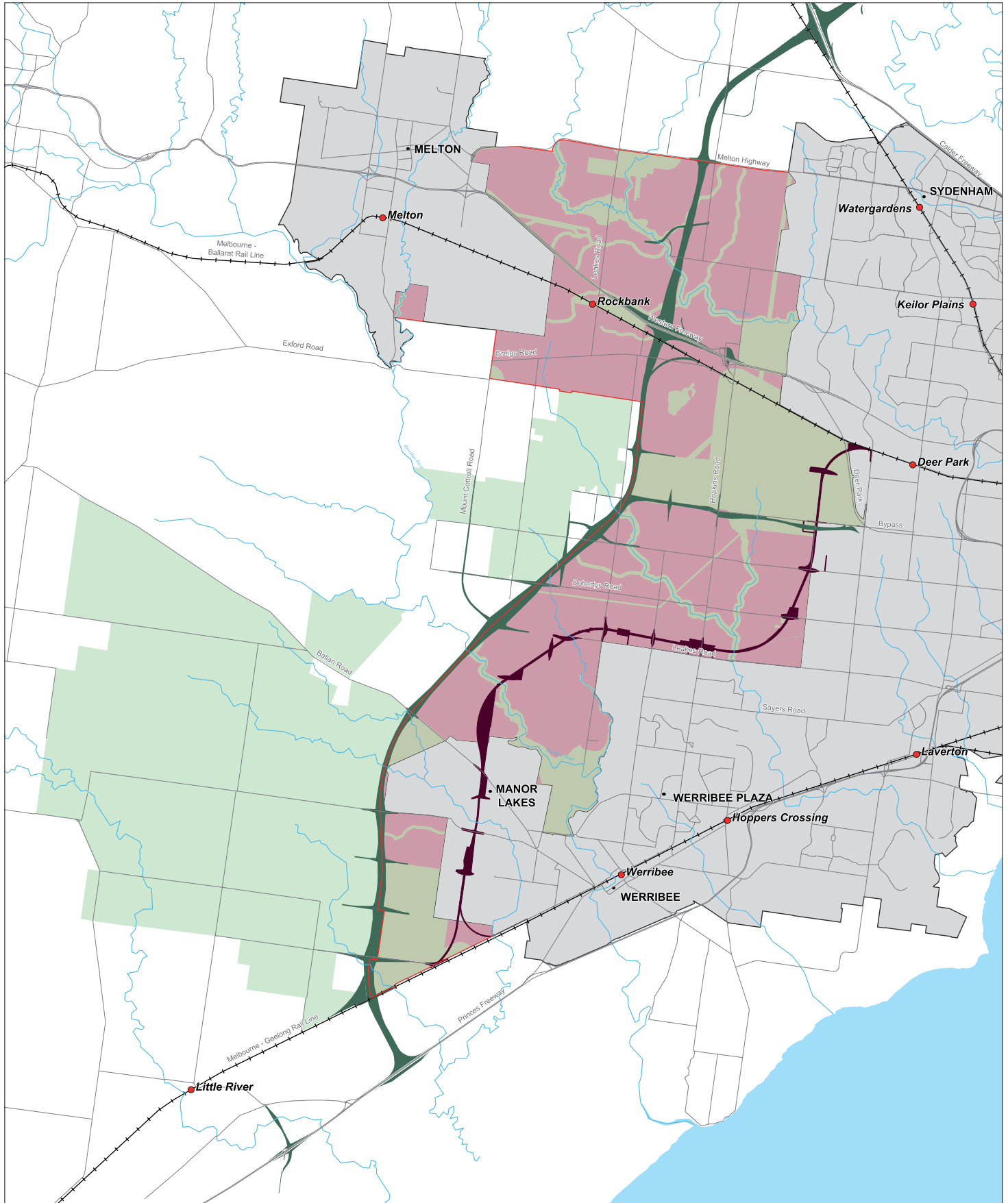
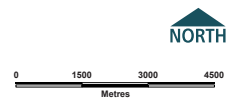


LAND USE AND TRANSPORT INITIATIVES - MELBOURNE'S WEST



- Land within existing Urban Growth Boundary
- Amendment VC68 Urban Growth Boundary
- Non-Urban Land
- Land potentially suitable for urban development
- Grassland Reserve
- Regional Rail Link
- Outer Metropolitan Ring/E6 Transport Corridor
- Roads
- Rivers / Creeks
- Locality
- Rail Line and Stations



This map represents the information contained in Amendment VC68 as approved by the Minister for Planning. This amendment will not become operational until it has been ratified by Parliament and subsequently gazetted. The boundaries of land suitable for urban development will be refined by Precinct Structure Plans.

© The State of Victoria, 2010. The State of Victoria does not warrant the accuracy or completeness of information in this publication and any person using or relying upon such information does so on the basis that the State of Victoria shall bear no responsibility or liability whatsoever for any errors, faults, defects or omissions in the information.

