

Blue Mackerel North Pty Ltd  
Blue Mackerel Offshore Wind Farm EIA and Approvals

Project No. 12656248  
Revision No. 0  
Date 18/12/2025

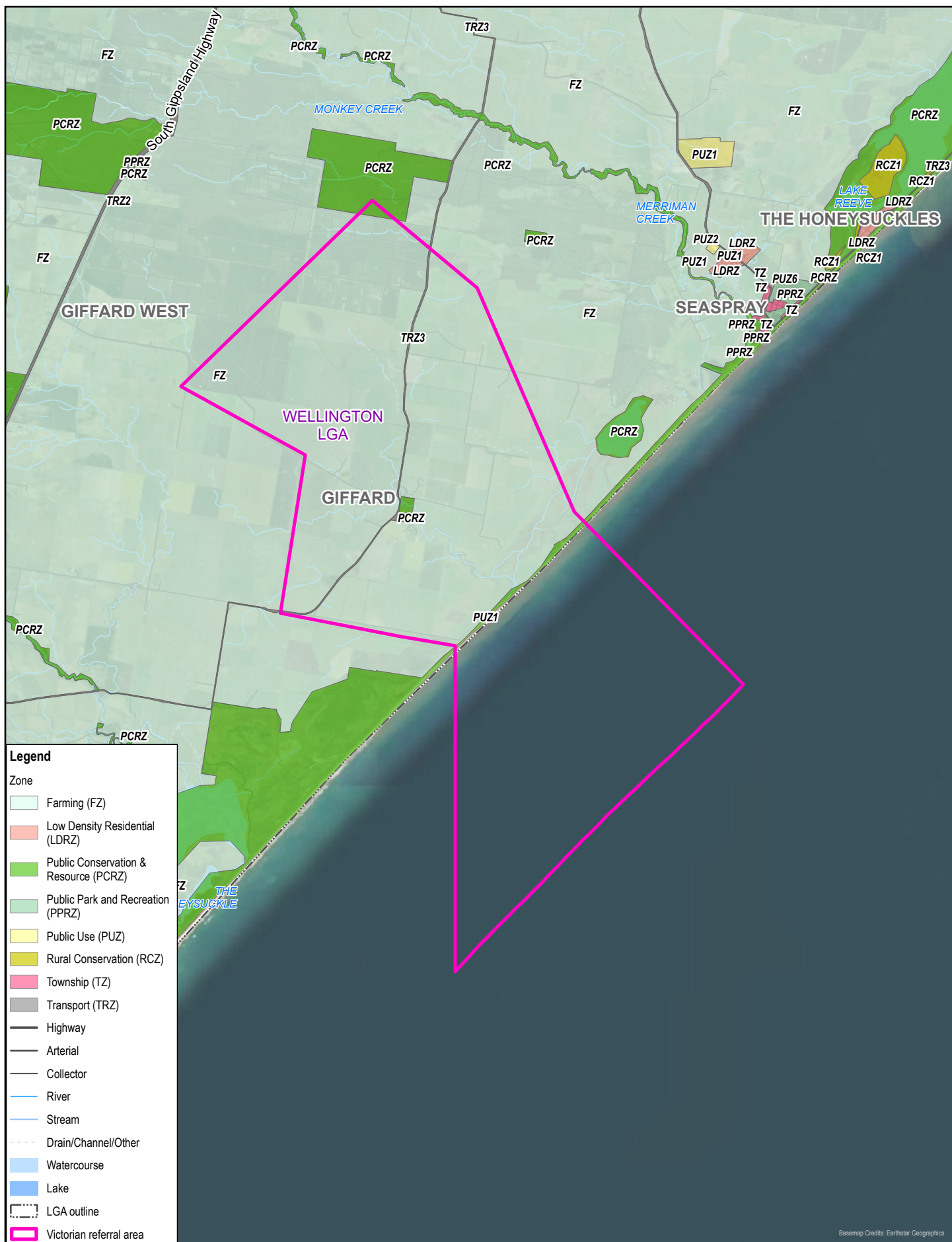
## Project overview

## Figure 1

Whilst every care has been taken to prepare this map, GHD (and DATA CUSTODIAN) make no representations or warranties about its accuracy, reliability, completeness or suitability for any particular purpose and cannot accept liability and responsibility of any kind (whether in contract, tort or otherwise) for any expenses, losses, damages and/or costs (including indirect or consequential damage) which are or may be incurred by any party as a result of the map being inaccurate, incomplete or unsuitable in any way and for any reason.

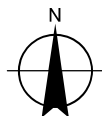
\\ghdnet\ghd\AU\Melbourne\Projects\311\2656248\GIS\Maps\Deliverables\12656248\_Ecology\_Terrestrial\12656248\_Ecology\_Terrestrial.aprx - 12656248\_SM\_Inset\_A4P  
Print date: 18 Dec 2025 - 09:37

Data source: BMN, Project Data, 2025; DEECA, VicMap, 2025; Basemap, see map for credits; Created by: tworth



Paper Size ISO A4  
0 1 2 3 4  
Kilometers

Map Projection: Transverse Mercator  
Horizontal Datum: GDA2020  
Grid: GDA2020 MGA Zone 55



Blue Mackerel North Pty Ltd  
Blue Mackerel Offshore Wind Farm EIA and Approvals

Project No. 12656248  
Revision No. 0  
Date 18/12/2025

Planning zones

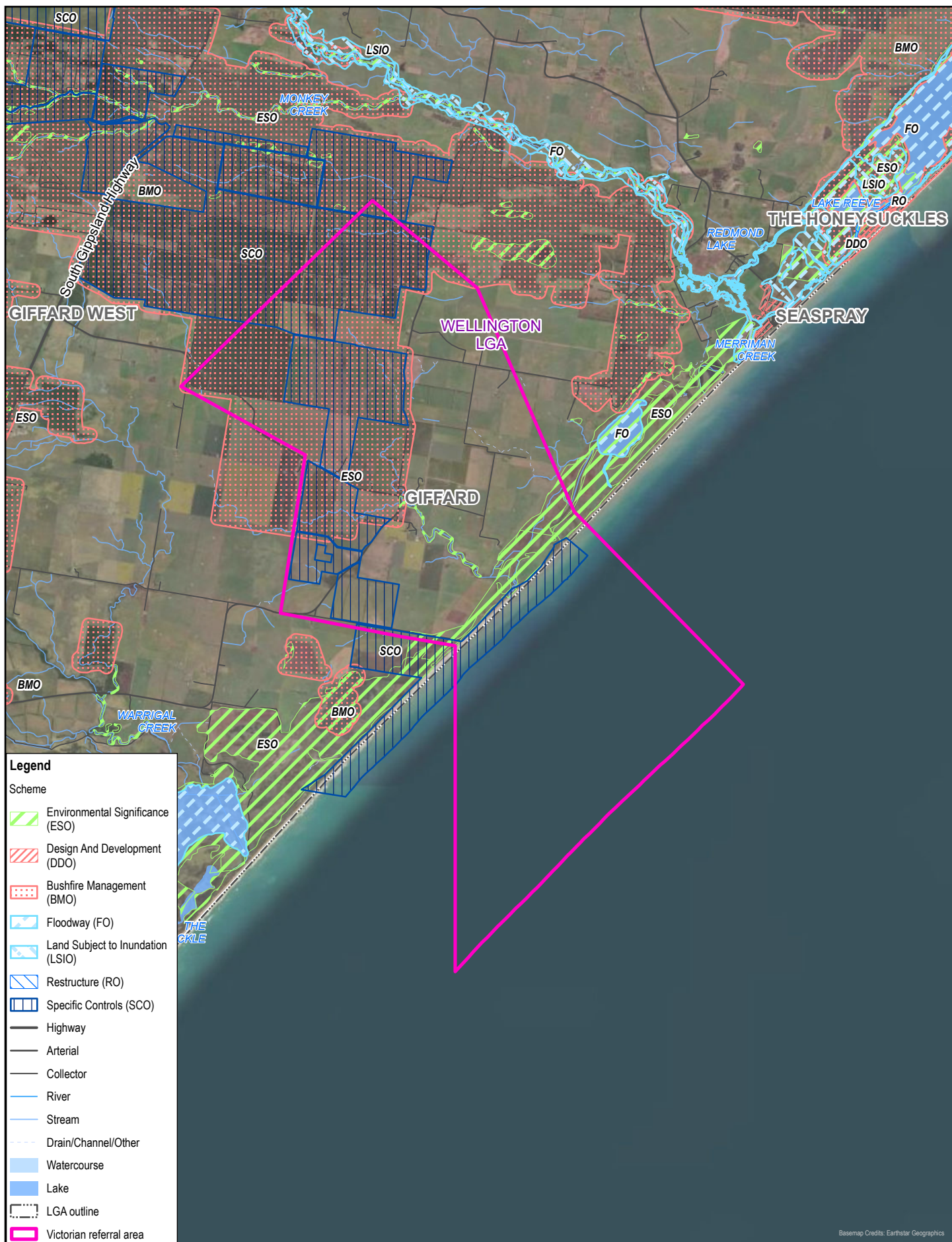
Figure 2

Whilst every care has been taken to prepare this map, GHD (and DATA CUSTODIAN) make no representations or warranties about its accuracy, reliability, completeness or suitability for any particular purpose and cannot accept liability and responsibility of any kind (whether in contract, tort or otherwise) for any expenses, losses, damages and/or costs (including indirect or consequential damage) which are or may be incurred by any party as a result of the map being inaccurate, incomplete or unsuitable in any way and for any reason.

\\ghdnet\ghd\AU\Melbourne\Projects\31112656248\GIS\Maps\Deliverables\12656248\_Ecology\_Terrestrial\12656248\_Ecology\_Terrestrial.aprx - 12656248\_SM\_A4P  
Print date: 18 Dec 2025 - 09:37

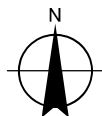
Data source: BMN, Project Data, 2025; DEECA, VicMap, 2025; Basemap, see map for credits; Created by: tworth





Paper Size ISO A4  
0 1 2 3 4  
Kilometers

Map Projection: Transverse Mercator  
Horizontal Datum: GDA2020  
Grid: GDA2020 MGA Zone 55



Blue Mackerel North Pty Ltd  
Blue Mackerel Offshore Wind Farm EIA and Approvals

Project No. 12656248  
Revision No. 0  
Date 18/12/2025

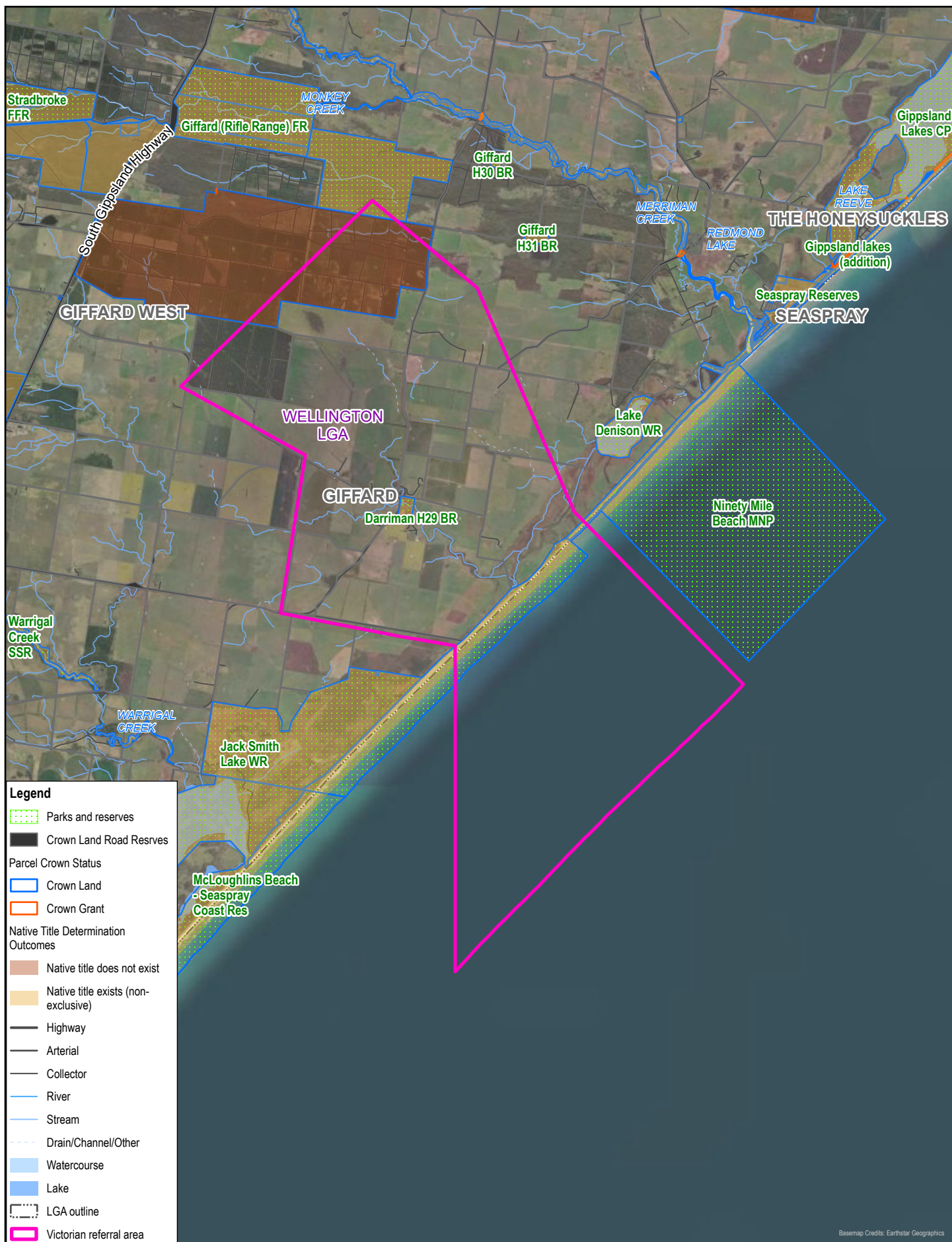
Planning overlays

Figure 3

Whilst every care has been taken to prepare this map, GHD (and DATA CUSTODIAN) make no representations or warranties about its accuracy, reliability, completeness or suitability for any particular purpose and cannot accept liability and responsibility of any kind (whether in contract, tort or otherwise) for any expenses, losses, damages and/or costs (including indirect or consequential damage) which are or may be incurred by any party as a result of the map being inaccurate, incomplete or unsuitable in any way and for any reason.

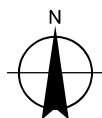
\\ghdnet\ghd\AU\Melbourne\Projects\31112656248\GIS\Maps\Deliverables\12656248\_Ecology\_Terrestrial\12656248\_Ecology\_Terrestrial.aprx - 12656248\_SM\_A4P  
Print date: 18 Dec 2025 - 09:38

Data source: BMN, Project Data, 2025; DEECA, VicMap, 2025; Basemap, see map for credits; Created by: tworth



Paper Size ISO A4  
0 1 2 3 4  
Kilometers

Map Projection: Transverse Mercator  
Horizontal Datum: GDA2020  
Grid: GDA2020 MGA Zone 55



Blue Mackerel North Pty Ltd  
Blue Mackerel Offshore Wind Farm EIA and Approvals

Project No. 12656248  
Revision No. 0  
Date 18/12/2025

Parks, reserves and tenure

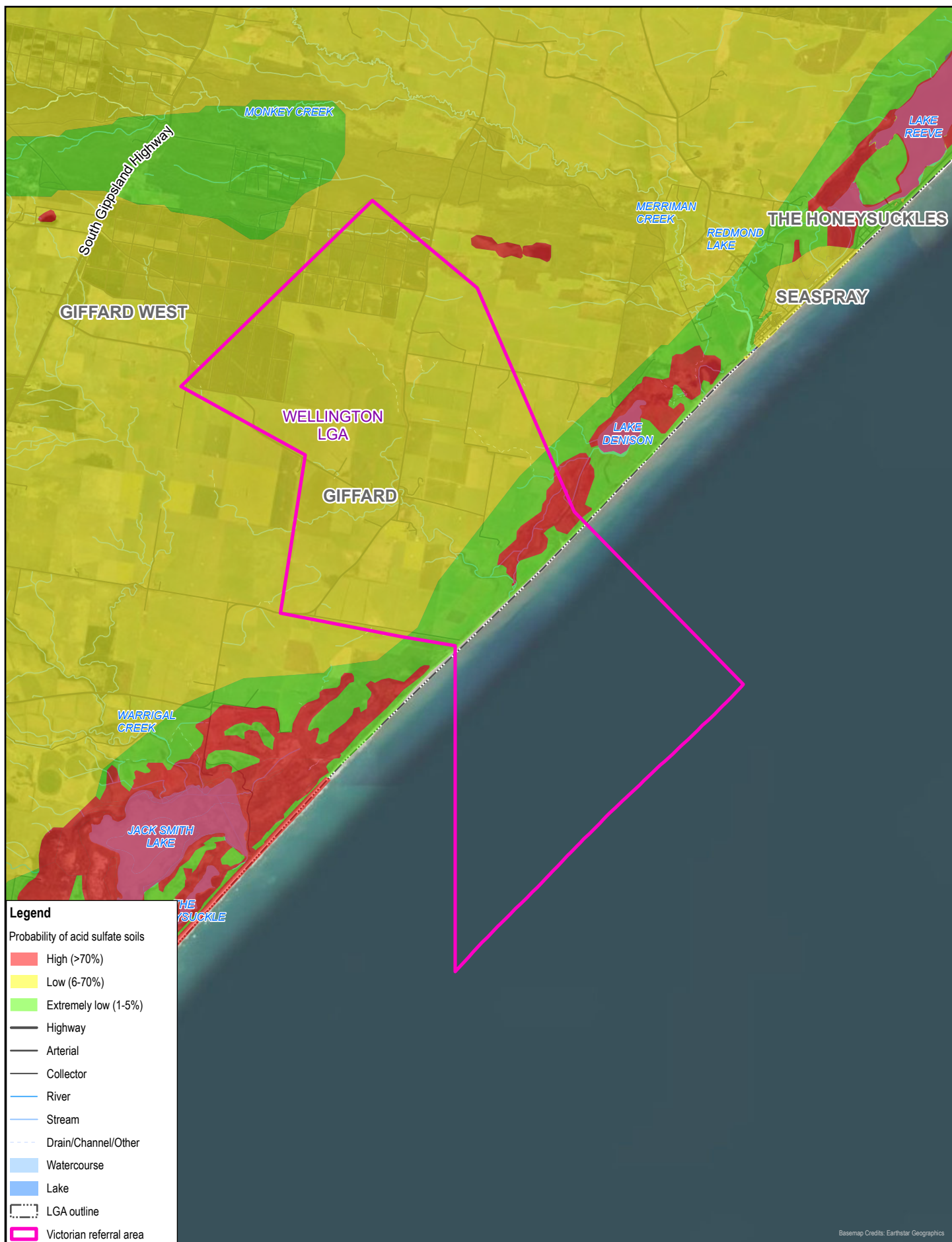
Figure 4

Whilst every care has been taken to prepare this map, GHD (and DATA CUSTODIAN) make no representations or warranties about its accuracy, reliability, completeness or suitability for any particular purpose and cannot accept liability and responsibility of any kind (whether in contract, tort or otherwise) for any expenses, losses, damages and/or costs (including indirect or consequential damage) which are or may be incurred by any party as a result of the map being inaccurate, incomplete or unsuitable in any way and for any reason.

\\ghdnet\ghd\AU\Melbourne\Projects\31112656248\GIS\Maps\Deliverables\12656248\_Ecology\_Terrestrial\12656248\_Ecology\_Terrestrial.aprx - 12656248\_SM\_A4P  
Print date: 18 Dec 2025 - 09:38

Data source: BMN, Project Data, 2025; DEECA, VicMap, 2025; Basemap, see map for credits; Created by: tworth



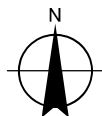


Paper Size ISO A4

0 1 2 3 4

Kilometers

Map Projection: Transverse Mercator  
Horizontal Datum: GDA2020  
Grid: GDA2020 MGA Zone 55



Blue Mackerel North Pty Ltd  
Blue Mackerel Offshore Wind Farm EIA and Approvals

Project No. 12656248  
Revision No. 0  
Date 18/12/2025

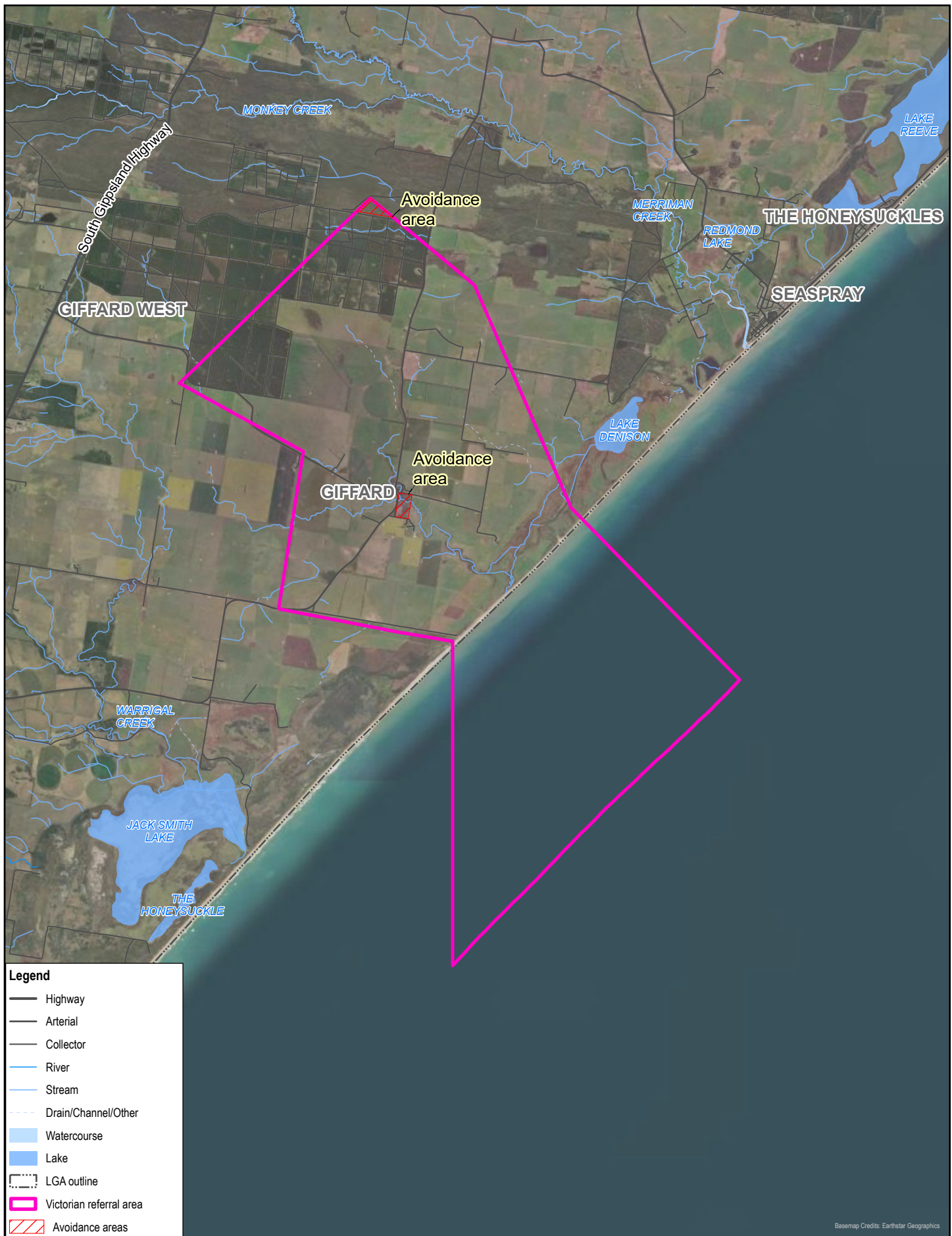
Acid sulfate soils

Figure 5

Whilst every care has been taken to prepare this map, GHD (and DATA CUSTODIAN) make no representations or warranties about its accuracy, reliability, completeness or suitability for any particular purpose and cannot accept liability and responsibility of any kind (whether in contract, tort or otherwise) for any expenses, losses, damages and/or costs (including indirect or consequential damage) which are or may be incurred by any party as a result of the map being inaccurate, incomplete or unsuitable in any way and for any reason.

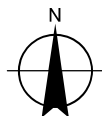
\\ghdnet\ghd\AU\Melbourne\Projects\3112656248\GIS\Maps\Deliverables\12656248\_Ecology\_Terrestrial\12656248\_Ecology\_Terrestrial.aprx - 12656248\_SM\_A4P  
Print date: 18 Dec 2025 - 09:39

Data source: BMN, Project Data, 2025; DEECA, VicMap, 2025; Basemap, see map for credits; Created by: tworth



Paper Size ISO A4  
0 1 2 3 4  
Kilometers

Map Projection: Transverse Mercator  
Horizontal Datum: GDA2020  
Grid: GDA2020 MGA Zone 55



Blue Mackerel North Pty Ltd  
Blue Mackerel Offshore Wind Farm EIA and Approvals

Project No. 12656249  
Revision No. 0  
Date 18/12/2025

Avoidance areas

Figure 6

Whilst every care has been taken to prepare this map, GHD (and DATA CUSTODIAN) make no representations or warranties about its accuracy, reliability, completeness or suitability for any particular purpose and cannot accept liability and responsibility of any kind (whether in contract, tort or otherwise) for any expenses, losses, damages and/or costs (including indirect or consequential damages) which are or may be incurred by any party as a result of the map being inaccurate, incomplete or unsuitable in any way and for any reason.

\\ghdnet\ghd\AU\Melbourne\Projects\31112656248\GIS\Maps\Deliverables\12656248\_Ecology\_Terrestrial\12656248\_Ecology\_Terrestrial.aprx - 12656248\_SM\_A4P  
Print date: 18 Dec 2025 - 10:22

Data source: BMN, Project Data, 2025; DEECA, VicMap, 2025; Basemap, see map for credits; Created by: tworth

**Table 1: Project coordinates in AMG (MGA55GDA2020)**

Area	Easting	Northing
Cable Investigation Area	508683	5729725
Cable Investigation Area	508683	5744390
Cable Investigation Area	504312	5745206
Cable Investigation Area	504933	5749162
Cable Investigation Area	501822	5750873
Cable Investigation Area	506615	5755525
Cable Investigation Area	509236	5753338
Cable Investigation Area	511665	5747741
Cable Investigation Area	516025	5743289
Cable Investigation Area	520188	5741613
Feasibility Licence Area	524739	5736517
Feasibility Licence Area	521606	5722145
Feasibility Licence Area	508683	5729725
Feasibility Licence Area	520188	5741613

Note: Areas represented in this table cover all Project components across both the Victorian and Commonwealth jurisdictions