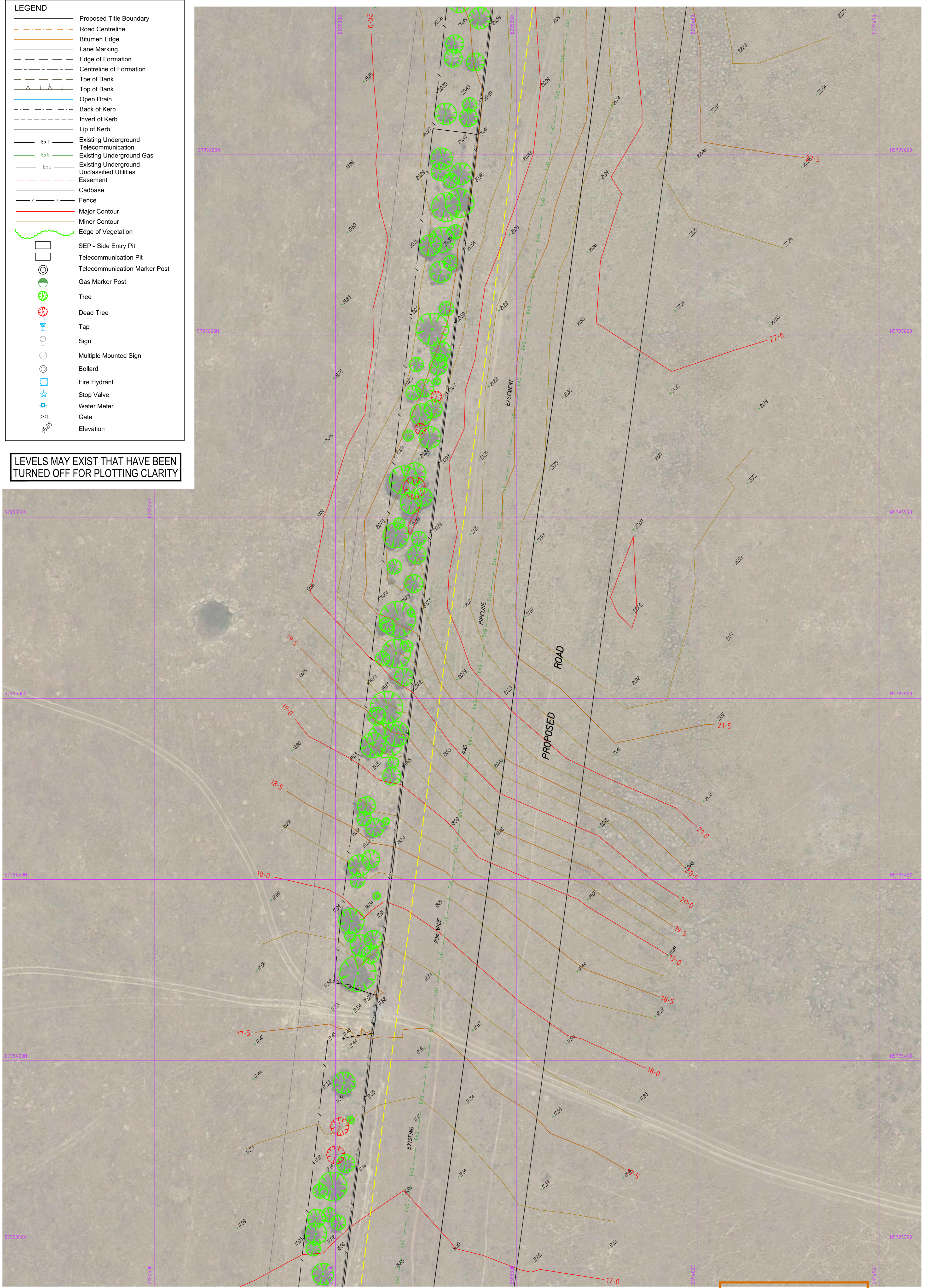


LEGEND

- Proposed Title Boundary
- Road Centreline
- Bitumen Edge
- Lane Marking
- Edge of Formation
- Centreline of Formation
- Toe of Bank
- Top of Bank
- Open Drain
- Back of Kerb
- Invert of Kerb
- Lip of Kerb
- Existing Underground Telecommunication
- Existing Underground Gas
- Existing Underground Unclassified Utilities
- Easement
- Cadbase
- Fence
- Major Contour
- Minor Contour
- Edge of Vegetation
- SEP - Side Entry Pit
- Telecommunication Pit
- Telecommunication Marker Post
- Gas Marker Post
- Tree
- Dead Tree
- Tap
- Sign
- Multiple Mounted Sign
- Bollard
- Fire Hydrant
- Stop Valve
- Water Meter
- Gate
- Elevation

LEVELS MAY EXIST THAT HAVE BEEN TURNED OFF FOR PLOTTING CLARITY



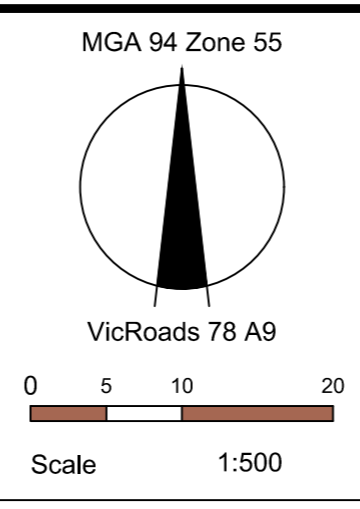
SEE SHEET 2

PRELIMINARY



| REVISION | DATE | APPD |
|------------------------|----------|------|
| - Preliminary drawings | 01/05/17 | BM |

NOTES:
 All parcel boundaries shown grey in this data are derived from Cadastral Map Base and are indicative only.
 All fences are Post & Wire unless otherwise specified.
 Exact location of utilities has not been proven and are based on DBYD information.
 Contour Interval: 0.25m
 Grid interval: 50m



| | | |
|----------|---------------------|-----------------|
| Surveyed | L.Steiger & S.Matti | 11th April 2017 |
| Drawn | A. Auleebux | 24th April 2017 |
| Checked | B. Munari | 1st May 2017 |
| Approved | - | - |

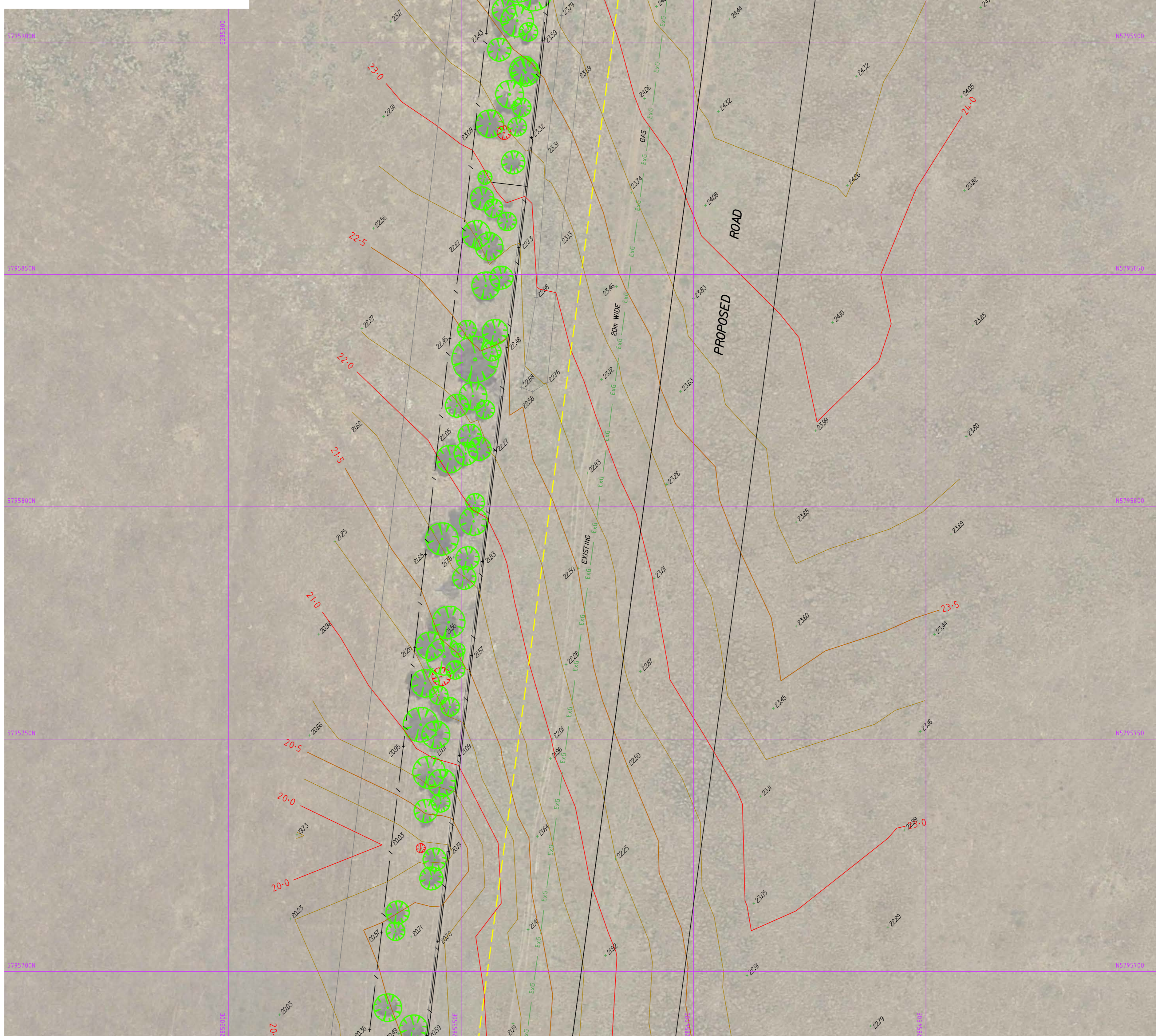
Feature And Level Survey
 Little River Road
 Little River

Melbourne Water Corporation Ref. SVY170022
Drawing No. SVY170022/10 **Rev -**
 Sheet No. 10 of 14 1900s65.dwg
 © SMEC Australia Pty Ltd ABN 47 065 475 149 A1

LEGEND

| | |
|--|---|
| | Proposed Title Boundary |
| | Road Centreline |
| | Bitumen Edge |
| | Lane Marking |
| | Edge of Formation |
| | Centreline of Formation |
| | Toe of Bank |
| | Top of Bank |
| | Open Drain |
| | Back of Kerb |
| | Invert of Kerb |
| | Lip of Kerb |
| | Existing Underground Telecommunication |
| | Existing Underground Gas |
| | Existing Underground Unclassified Utilities |
| | Easement |
| | Cardbase |
| | Fence |
| | Major Contour |
| | Minor Contour |
| | Edge of Vegetation |
| | SEP - Side Entry Pit |
| | Telecommunication Pit |
| | Telecommunication Marker Post |
| | Gas Marker Post |
| | Tree |
| | Dead Tree |
| | Tap |
| | Sign |
| | Multiple Mounted Sign |
| | Bollard |
| | Fire Hydrant |
| | Stop Valve |
| | Water Meter |
| | Gate |
| | Elevation |

LEVELS MAY EXIST THAT HAVE BEEN TURNED OFF FOR PLOTTING CLARITY



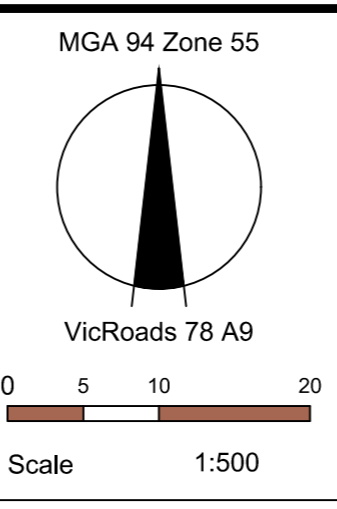
SEE SHEET 3

PRELIMINARY



| REVISION | DATE | APPD |
|------------------------|----------|------|
| - Preliminary drawings | 01/05/17 | BM |

NOTES:
 All parcel boundaries shown grey in this data are derived from Cadastral Map Base and are indicative only.
 All fences are Post & Wire unless otherwise specified.
 Exact location of utilities has not been proven and are based on DBYD information.
 Contour Interval: 0.25m
 Grid Interval: 50m



| | | |
|----------|---------------------|-----------------|
| Surveyed | L.Steiger & S.Matti | 11th April 2017 |
| Drawn | A. Auleebux | 24th April 2017 |
| Checked | B. Munari | 1st May 2017 |
| Approved | - | - |

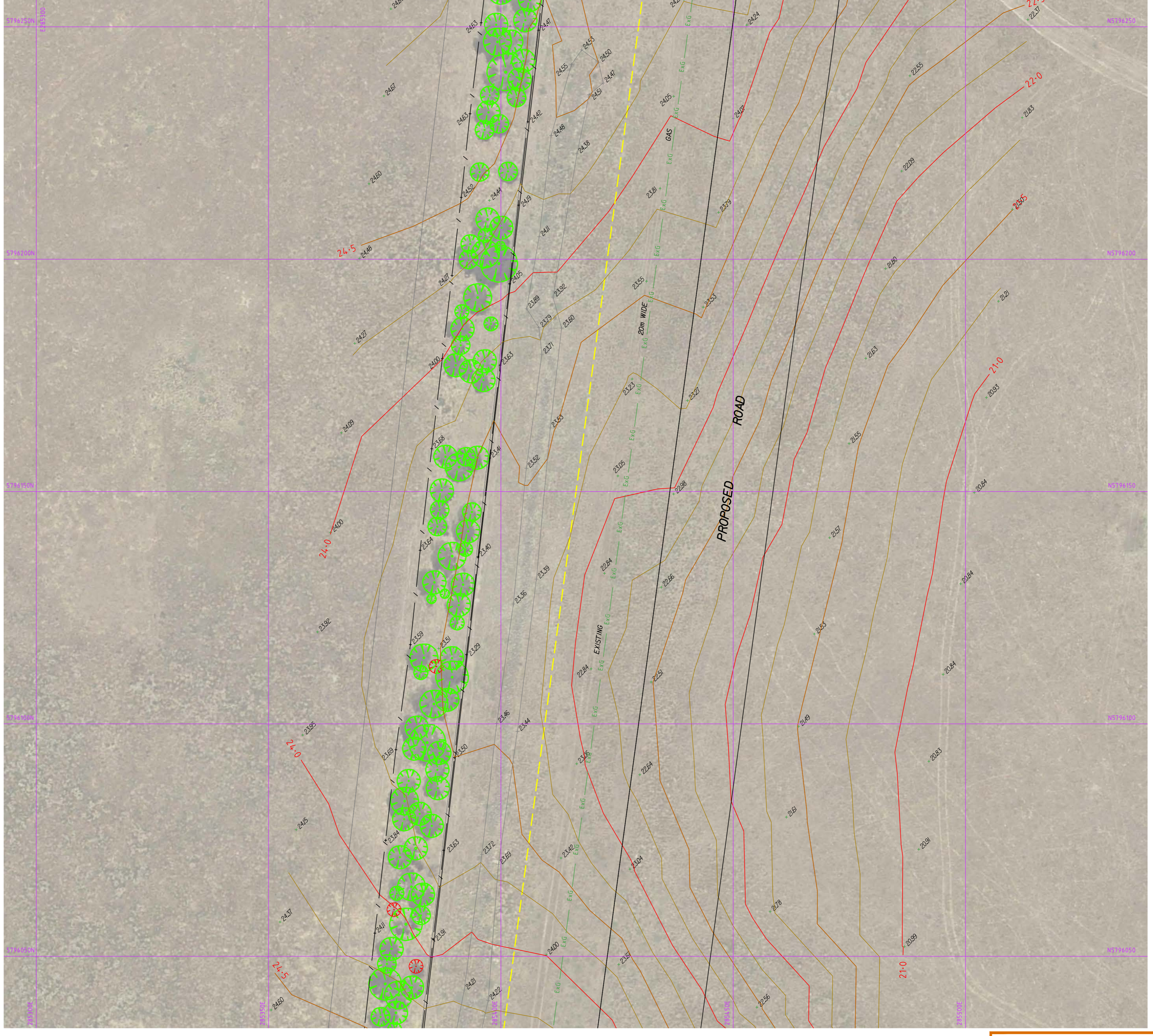
Feature And Level Survey
 Little River Road
 Little River

Melbourne Water Corporation Ref. SVY170022
Drawing No. SVY170022/11 Rev -
 Sheet No. 11 of 14 1900s65.dwg
 © SMEC Australia Pty Ltd ABN 47 065 475 149 A1

LEGEND

- Proposed Title Boundary
- - - Road Centreline
- Bitumen Edge
- Lane Marking
- - - Edge of Formation
- - - Centreline of Formation
- Toe of Bank
- Top of Bank
- Open Drain
- Back of Kerb
- Invert of Kerb
- Lip of Kerb
- ExT Existing Underground Telecommunication
- ExG Existing Underground Gas
- ExU Existing Underground Unclassified Utilities
- - - Easement
- Cadbase
- Fence
- Major Contour
- Minor Contour
- Edge of Vegetation
- SEP - Side Entry Pit
- Telecommunication Pit
- Telecommunication Marker Post
- Gas Marker Post
- Tree
- Dead Tree
- Tap
- Sign
- Multiple Mounted Sign
- Bollard
- Fire Hydrant
- Stop Valve
- Water Meter
- Gate
- Elevation

LEVELS MAY EXIST THAT HAVE BEEN TURNED OFF FOR PLOTTING CLARITY



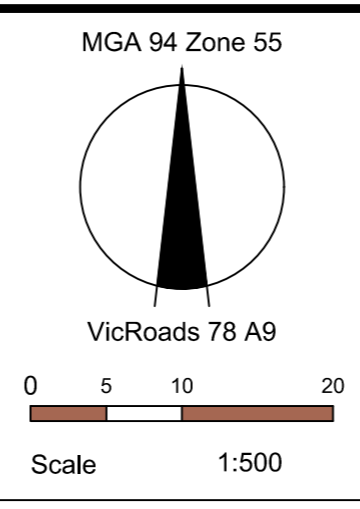
SEE SHEET 4

PRELIMINARY



| REVISION | DATE | APPD |
|------------------------|----------|------|
| - Preliminary drawings | 01/05/17 | BM |

NOTES:
 All parcel boundaries shown grey in this data are derived from Cadastral Map Base and are indicative only.
 All fences are Post & Wire unless otherwise specified.
 Exact location of utilities has not been proven and are based on DBYD information.
 Contour Interval: 0.25m
 Grid interval: 50m



| | | |
|----------|---------------------|-----------------|
| Surveyed | L.Steiger & S.Matti | 11th April 2017 |
| Drawn | A. Auleebux | 24th April 2017 |
| Checked | B. Munari | 1st May 2017 |
| Approved | - | - |

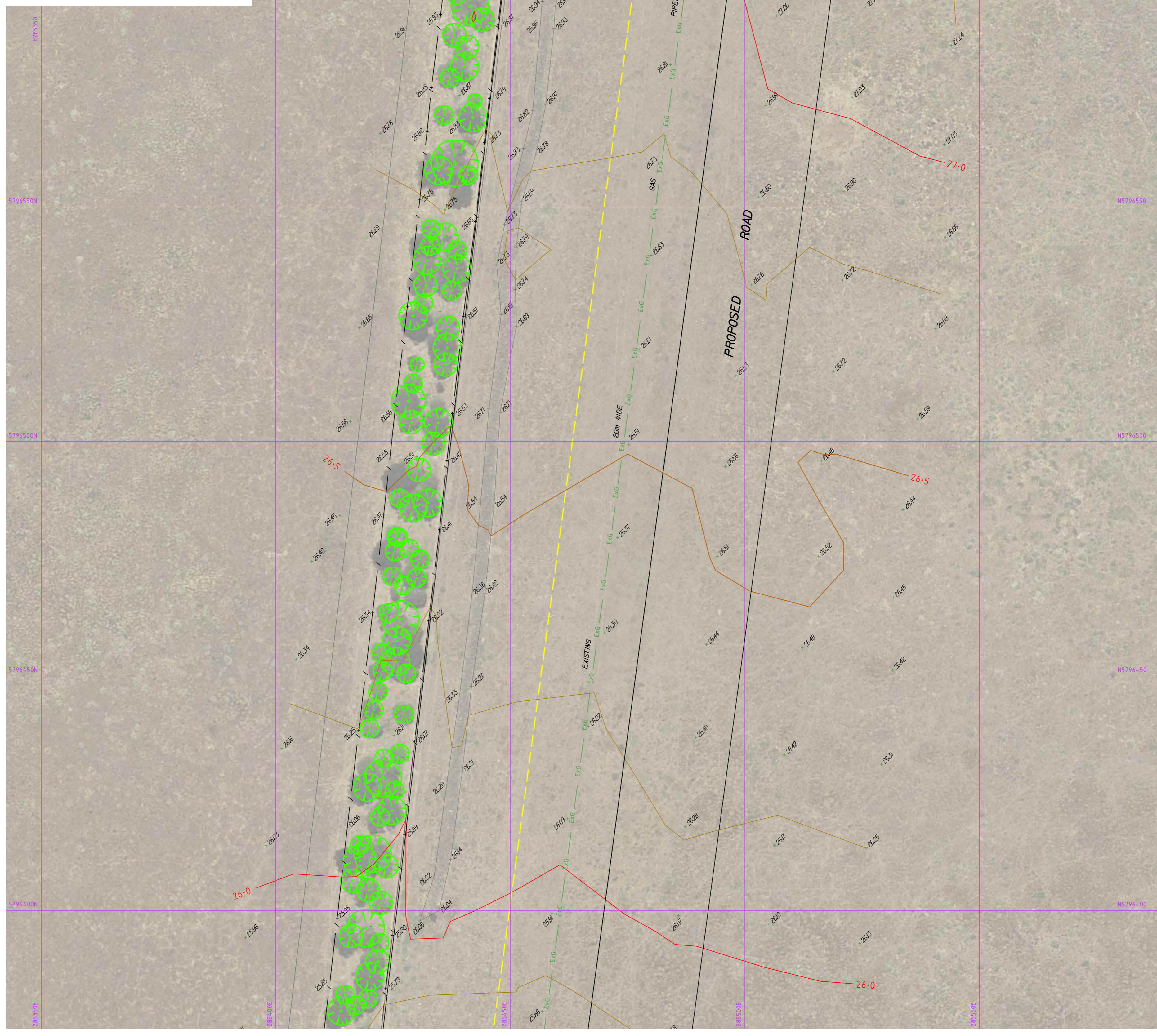
Feature And Level Survey
 Little River Road
 Little River

Melbourne Water Corporation Ref. SVY170022
Drawing No. SVY170022/12 **Rev -**
 Sheet No. 12 of 14 1900s65.dwg
 © SMEC Australia Pty Ltd ABN 47 065 475 149 A1

LEGEND

- Proposed Title Boundary
- Road Centreline
- Bitumen Edge
- Lane Marking
- Edge of Formation
- Centreline of Formation
- Toe of Bank
- Top of Bank
- Open Drain
- Back of Kerb
- Invert of Kerb
- Lip of Kerb
- Existing Underground Telecommunication
- Existing Underground Gas
- Existing Underground Unclassified Utilities
- Easement
- Cadbase
- Fence
- Major Contour
- Minor Contour
- Edge of Vegetation
- SEP - Side Entry Pit
- Telecommunication Pit
- Telecommunication Marker Post
- Gas Marker Post
- Tree
- Dead Tree
- Tap
- Sign
- Multiple Mounted Sign
- Bollard
- Fire Hydrant
- Stop Valve
- Water Meter
- Gate
- Elevation

LEVELS MAY EXIST THAT HAVE BEEN TURNED OFF FOR PLOTTING CLARITY



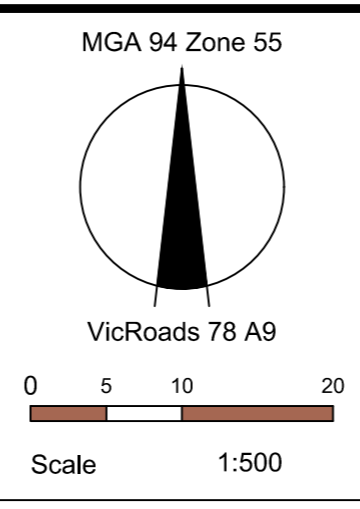
SEE SHEET 5

PRELIMINARY



| REVISION | DATE | APPD |
|------------------------|----------|------|
| - Preliminary drawings | 01/05/17 | BM |

NOTES:
 All parcel boundaries shown grey in this data are derived from Cadastral Map Base and are indicative only.
 All fences are Post & Wire unless otherwise specified.
 Exact location of utilities has not been proven and are based on DBYD information.
 Contour Interval: 0.25m
 Grid Interval: 50m



| | | |
|----------|---------------------|-----------------|
| Surveyed | L.Steiger & S.Matti | 11th April 2017 |
| Drawn | A. Auleebux | 24th April 2017 |
| Checked | B. Munari | 1st May 2017 |
| Approved | - | - |

Feature And Level Survey
 Little River Road
 Little River

Melbourne Water Corporation Ref. SVY170022
Drawing No. SVY170022/13 **Rev -**
 Sheet No. 13 of 14 1900s65.dwg
 © SMEC Australia Pty Ltd ABN 47 065 475 149 A1