



Viva Energy Gas Terminal Project

Consultation Plan

(Environment Effects Act 1978 & Pipelines Act 2005)

July 2021

Acknowledgement

Viva Energy acknowledges and pays respect to the past, present and future Traditional Custodians and Elders of this nation and the continuation of cultural, spiritual and educational practices of Aboriginal and Torres Strait Islander peoples. We particularly pay respects to the Traditional Custodians of the land, across the nation where we conduct business.

We also acknowledge our gratitude that we share this land today, our sorrow for the costs of that sharing and our hope and belief that we can move to a place of equity, justice and partnership together.

Purpose of this plan

This Consultation Plan for the Viva Energy Gas Terminal Project has been developed in response to the requirements of the *Environment Effects Act 1978* and *Pipelines Act 2005*. The Consultation Plan will apply up until public exhibition of the EES and approvals documentation including the application for a pipeline licence.

The Consultation Plan aims to outline how Viva Energy will inform and consult with the public and stakeholders during the preparation of the EES and show how the proponent will consult with owners and occupiers of land about the proposed pipeline.

Consultation during the EES process will encompass both:

- Informal consultation by the proponent with stakeholders during technical investigations to assist the development of a sound EES; and
- Formal opportunities for public input into both the EES scoping requirements and review of the exhibited EES.

The Consultation Plan sets out the information Viva Energy, as the pipeline proponent, will provide to owners and occupiers of land in accordance with section 17 of the *Pipelines Act 2005*.

Specifically, Viva Energy's pre-licence consultation with potentially affected landowners and occupiers is outlined on pages 16 - 18. Sample notices as required under sections 19 and 27 of the *Pipelines Act 2005* are provided in Appendix C. Appendix D contains consultation information, in the form of fact sheets which comply with the *Pipelines Act 2005* and describe the proposed activities, management of potential adverse impacts and statutory procedures which will be followed.

Table of contents

Introduction	1
Legislative Context	1
About the Project.....	4
Background.....	4
About Viva Energy	6
Project Description	8
Stakeholders.....	11
Stakeholder identification	11
Issues identification and consultation	12
Landowners and occupiers.....	16
Engagement and consultation approach	19
Consultation principles	19
Consultation methods.....	21
COVID-19 Restrictions	22
Project timeline and consultation program.....	23
Information and records management	25
Privacy and use of confidential information.....	25
Monitoring and reporting.....	25
Communications – feedback and updates	26
Communications feedback and issues management.....	26
Feedback process.....	26
Feedback timing.....	27
Issues management.....	27
Further information.....	28
Abbreviations	29
Appendices	31
Appendix A: Illustrative stakeholder list - May 2021	
Appendix B: Details of Pre EES consultation	
Appendix C: Sample Notices	
Appendix D: Fact Sheets	

Introduction

Legislative Context

On 28 December 2020, the Victorian Minister for Planning announced that an Environment Effects Statement (EES) is required for the Viva Energy Gas Terminal Project (the Project) under the *Environment Effects Act 1978*, listing the following reasons:

- Primarily:
 - The project has the potential for significant adverse effects on the marine environment of Corio Bay including marine water quality. Sediment mobilisation and water discharges may impact on the marine ecosystem, including seagrass and other habitat for listed fauna species, some of which are listed under the *Flora and Fauna Guarantee Act 1995* and *Environment Protection and Biodiversity Conservation Act 1999*. The potentially significant effects from construction and operation of the Floating Gas Terminal will occur within Corio Bay and potentially the Port Phillip Bay (Western Shoreline) and Bellarine Peninsular Ramsar site.
 - The project has the potential for contributing to greenhouse gas emissions which warrant further investigation of the nature and extent.
- Secondly:
 - Other potential effects of the project on air quality, noise, land use, Aboriginal and historic heritage, native vegetation, groundwater, traffic and transport, as well as visual amenity should be addressed through integrated assessments.
- An environment effects statement is warranted to provide an integrated, robust and transparent process to assess the project's potentially significant effects and associated uncertainties, and to evaluate the effectiveness of the proposed avoidance, minimisation, mitigation and offsetting measures, prior to any statutory approval decisions.
- An EES would also enable a transparent and rigorous process for consideration of potentially significant adverse effects of the project to inform relevant statutory decision-making, including under the *Planning and Environment Act 1987*, *Flora and Fauna Guarantee Act 1995*, *Environment Protection Act 2017*, *Marine and Coastal Act 2018* and *Pipelines Act 2005*.

The EES is an assessment of the potential environmental, economic and social impacts or effects of a proposed development. It is prepared to inform the Minister for Planning's assessment on the level of environmental effects a project may have, which is considered by statutory decision-makers in deciding whether to approve a project.

The EES includes detailed technical investigations into potential impacts or effects which are undertaken by qualified specialists. The matters to be investigated in the EES are set out in scoping requirements issued by the Minister for Planning. Draft EES scoping requirements will be placed on public exhibition prior to final EES scoping requirements being issued.

At the completion of these studies the proposed final EES documentation will be submitted to the Minister for Planning for advice on whether it is adequate prior to being placed on public exhibition. An inquiry may be appointed under the *Environment Effects Act 1978* to consider public submissions and provide recommendations to the Minister for Planning.

In addition to detailed technical investigations, the *Environment Effects Act 1978* requires 'the proponent to prepare and implement a public consultation plan for informing the public and consulting with stakeholders during the preparation of the EES'.

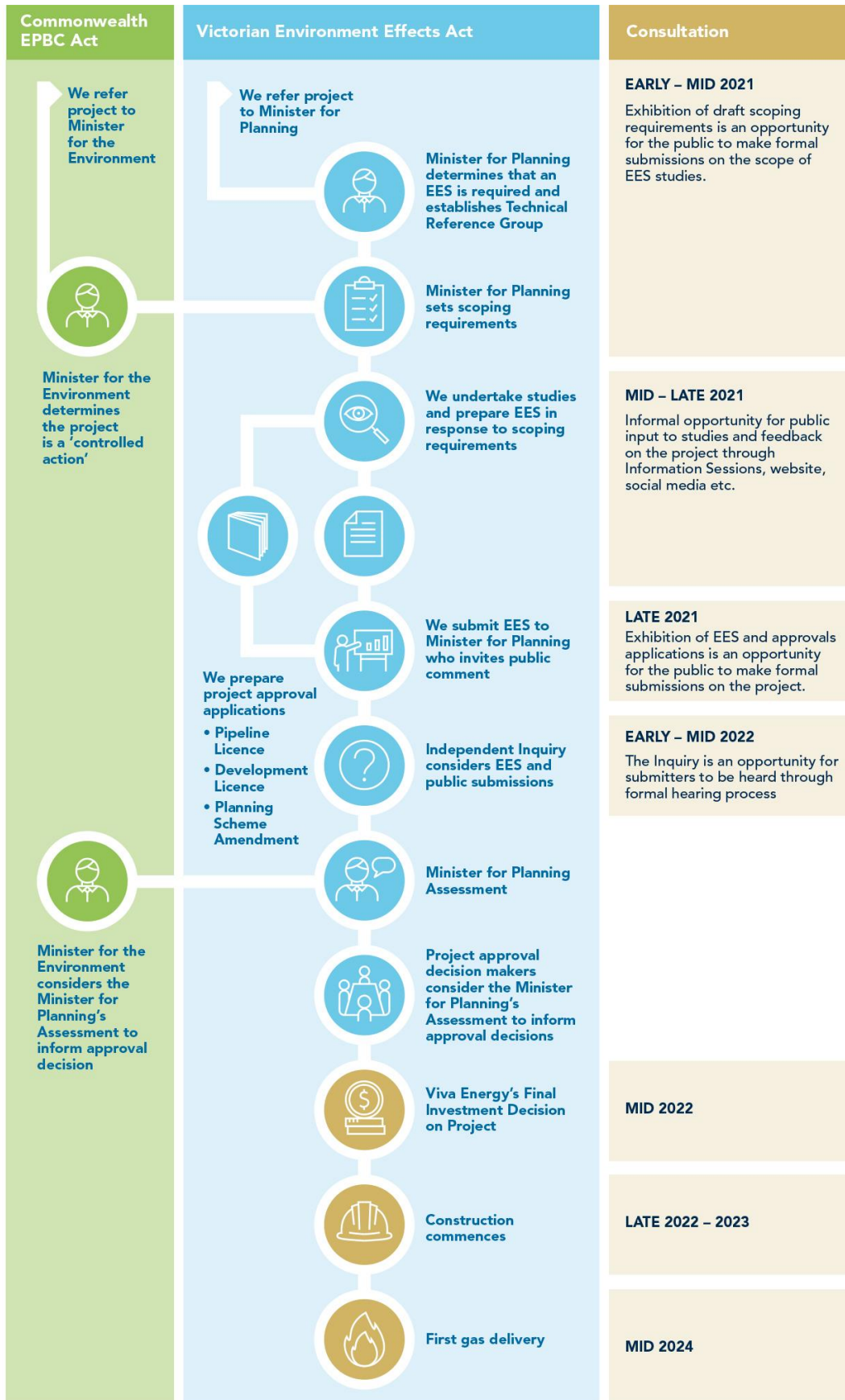
Further information on the EES process is available at: planning.vic.gov.au/environment-assessment/what-is-the-ees-process-in-victoria

On 21 January 2021 a delegate of the Commonwealth Minister for the Environment decided that the Project is a 'controlled action' (due to potential significant impact on the Port Phillip Bay (Western Shoreline) Ramsar site, listed migratory species and listed threatened species and ecological communities) and as such requires assessment and approval under the *Environment Protection and Biodiversity Conservation Act 1999*. The Project will be assessed in accordance with the bilateral agreement between the Victorian and Commonwealth Governments under the *Environment Effects Act 1978*.

There are a number of approvals required for the Project which will be sought concurrently with the EES process including under the *Pipelines Act 2005*, *Environment Protection Act 2017* and *Planning and Environment Act 1987*. The period of public exhibition of the approvals applications will coincide with the period during which public comments are sought for the final EES documentation.

The regulatory framework requires that this Consultation Plan be submitted for approval under both the *Environmental Effects Act 1978* and the *Pipelines Act 2005*. Progression of the EES process and pipeline licensing is contingent upon such approval.

Gas Terminal Project Timeline



About the Project

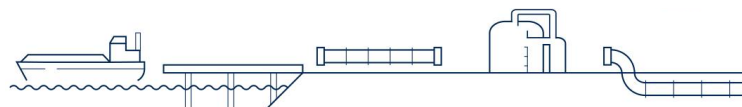
Background

In June 2020 Viva Energy announced its vision to transform its Geelong Refinery into an Energy Hub. The Geelong Energy Hub could support the energy transformation currently underway while helping to underpin the future viability of our refinery.

Having been part of the Geelong community since 1954, the refinery already supplies around half of Victoria’s liquid fuel energy needs – so is in effect already an energy hub. The broader Energy Hub vision could see the facility taking a leading role in supplying liquid fuels and gas as well as supporting the development of other alternative energy solutions. Importantly, diversification of the Geelong refinery site would protect local jobs, generate new jobs and skills and support economic development for the region.

The Geelong Energy Hub comprises a number of potential projects. The first project to be developed, and for which we are currently seeking approval, is the Gas Terminal Project.

Gas Terminal Project Approvals



Legislation	Floating Gas Terminal	Refinery Pier Extension	Aboveground Pipeline	Treatment Facility	Underground Pipeline
★ Environment Protection and Biodiversity Conservation Act 1999	Approval of Controlled Action 2020/8838				
Marine and Coastal Act 2018	Consent				
★ Environment Protection Act 2017	Development Licence and Operating Licence				
★ Planning and Environment Act 1987	Planning Scheme Amendment and Incorporated Document				
★ Pipelines Act 2005			Pipeline Licence		Pipeline Licence
Aboriginal Heritage Act 2006			CHMP		
Gas Safety Act 1997			Gas Safety Case		Gas Safety Case
Occupational Health and Safety Act 2004	Safety Case for a MHF			Amendment to the Current Refinery MHF Safety Case	

★ Approvals applications exhibited together with the EES.

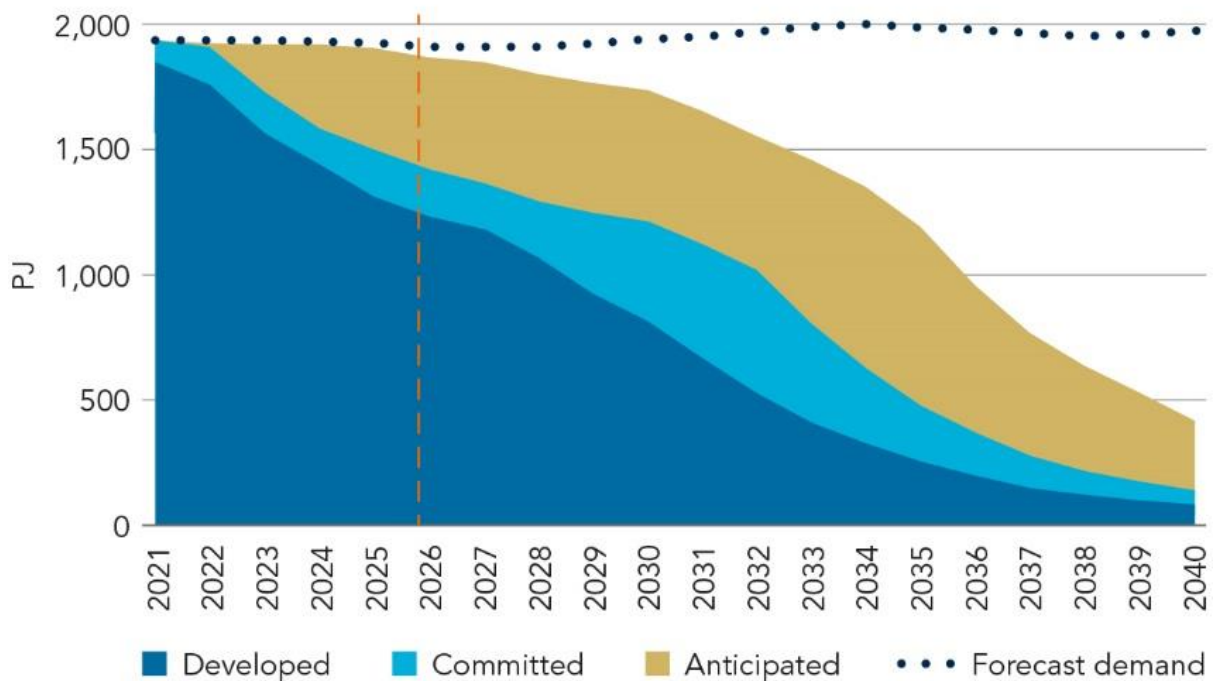
The key objective of the Gas Terminal Project is to facilitate supply of a new source of gas for the south-east Australian gas market.

Victorian households, businesses and manufacturing currently consume approximately 30 percent of gas demand in south-eastern Australia. Having a secure and competitive supply of gas is critical to our economy and our livelihoods.

Several market experts (AEMO and ACCC) have advised that a gas shortage could emerge in the south-east of Australia by 2023, with further shortfalls anticipated from 2026, and that a range of measures such as the development of liquefied natural gas (LNG) terminals will be needed to fill this supply gap.

Securing Victoria’s energy future

Projected eastern and south-eastern Australia gas production highlighting growing shortfalls from 2026



Existing, committed and anticipated developments 2021–2040 (PJ), including export LNG. Based on AEMO Gas Statement of Opportunity 2021 (central scenario).

The proposed gas terminal would allow us to bring gas from where it is produced in Australia or further afield to where it is needed. Depending on demand, a facility such as this could deliver up to 140 Petajoules per annum – which represents over half of Victoria’s gas demand.

About Viva Energy

The proponent for the Project is Viva Energy Gas Australia Pty Ltd, a wholly owned subsidiary of Viva Energy Group Limited (Viva Energy).

Viva Energy is one of Australia's leading energy companies with more than 110 years of operations in Australia.

Our Geelong Refinery is Viva Energy's largest operation, employing more than 700 people. Our refinery and associated operations have been part of the local Geelong community since 1954 and proudly supplies more than half of Victoria's fuel needs and injects more than \$200M each year into the local economy through wages and services.

For many years we have provided operational updates to the community via newspaper updates, Refinery Update newsletters, letter drops, social media, stakeholder and community meetings and briefings, as well as participation in Geelong events.

We are very proud of our Community Program. In addition to our national Community Partners, such as the Cathy Freeman Foundation, the Koorie Heritage Trust and the National Aboriginal Sporting Chance Academy, we also have partnerships with a range of local Geelong community organisations. These include Northern Futures and the Geelong Football Club – sponsoring their inaugural AFLW team and their NextGeneration Academy. We also engage social enterprise genU to manage the refinery cafeteria and provide gardening services. Sport plays a big role in the Geelong region, with AFL, soccer, netball and cricket being the highest participation sports, and we support ten local clubs to assist people, particularly children, to participate. We further support the local sporting community through our Club Legends Award, which rewards and celebrates unsung sporting volunteers in the Geelong region.

Supporting Victoria's economy

Each year over **\$550M** is invested in local wages and services into the Victorian local economy



2/3
of our workforce is in Victoria



331
retail sites in Victoria



400M litres of storage capacity across Victoria



Community Program

Our efforts are directed at programs that help our local communities reach their destinations

Docklands Head Office ●
Newport Terminal ●
Geelong Refinery ●



Viva Energy supplies

Around **50%** of the State's fuel needs

50% of jet fuel & **100%** of avgas to the Victorian market

50% of Victorian's bitumen requirements (100K tonnes), and has the capacity to supply more (180K tonnes)

and manufactures **Low Aromatic Fuel** for supply into NT, QLD & WA.

Every week, on average, we re-fuel:

490K

Cars, trucks, motorcycles, and buses.



18 SHIPS and **1,700** planes in Victoria



Geelong Refinery

1 of 4 refineries in Australia

700 people work at the refinery

Manufacturer in Australia of:



avgas



solvents



bitumen

Supplies **90%** of marine fuels for Victorian commercial shipping & Spirit of Tasmania



Accounts for more than **50%** of the Port of Geelong's trade, equalling **6.5M tonnes** per annum

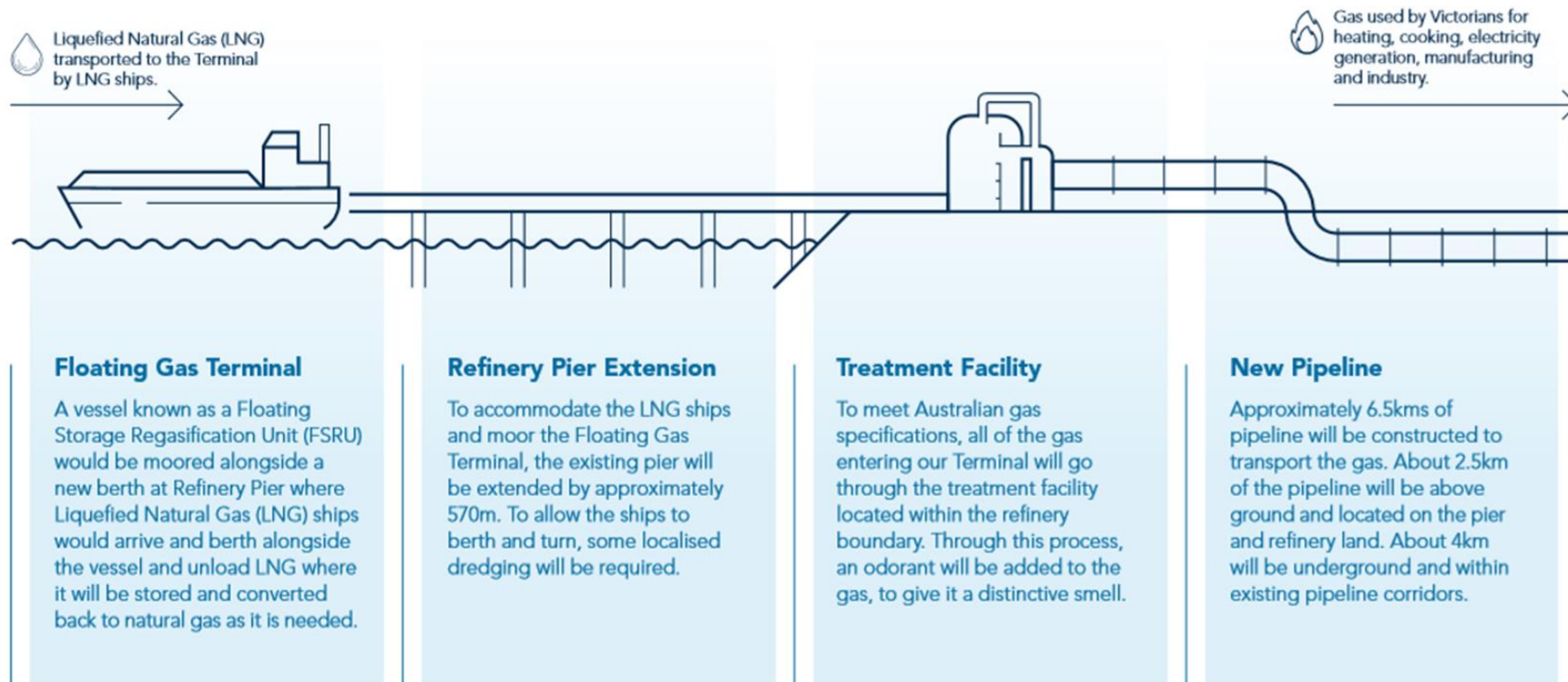
Project Description

The Gas Terminal Project is located in the City of Greater Geelong, 75 km south-west of Melbourne. The Project site is within and adjacent to a heavily developed port and industrial area on the western shores of Corio Bay between the Geelong suburbs of Corio and North Shore. The Port of Geelong has been in operation for over 150 years and is the largest industrial bulk cargo port in Victoria with over 600 ship visits and handling more than 14 million tonnes of product annually.

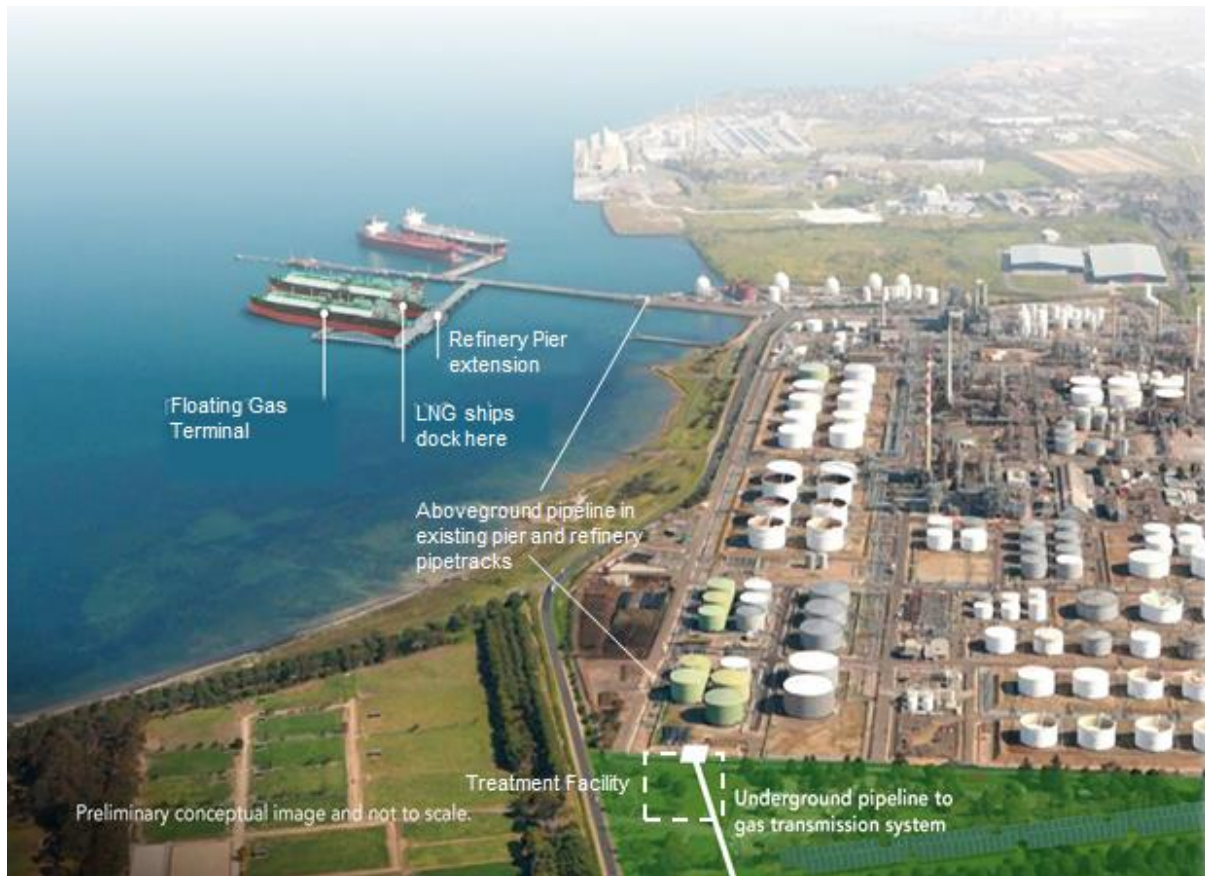


To the north of the Geelong Refinery along the proposed pipeline corridor, the area is predominantly rural. There are several other existing Viva Energy-owned underground pipelines running between the refinery and the connection point to the Victorian Transmission System at Lara.

Gas Terminal Project



The proposed gas terminal would be located adjacent to Geelong Refinery and would leverage our capability as an existing Major Hazard Facility operator and potential synergies between the two operations.



Subject to regulatory approvals and a Final Investment Decision by Viva Energy, construction and commissioning is expected to commence in late 2022 and take 1 – 2 years to complete. The gas terminal is expected to receive first gas delivery during winter 2024. The Project life is anticipated to be a minimum of 20 years.

When the Project is complete the Floating Gas Terminal, which continues to be an ocean-going vessel throughout the Project, would leave Corio Bay.

Stakeholders

Stakeholder identification

Accurate identification of stakeholders has been important in the development of this Consultation Plan. Viva Energy has maintained a list of stakeholders for this Project since October 2019 which comprises individuals and groups that may be impacted, have a role in any approvals needed or have expressed an interest in the Project. The list will be reviewed and updated as the Project progresses and recorded in Viva Energy’s stakeholder management database.

Stakeholders for this Project come from a wide cross-section of the community including:

Commonwealth government	Victorian government	Local government
Agencies, authorities and regulators	Neighbours, local residents	Local business and industry
Port users / commercial shipping	Landowners and occupiers	Community and environment interest groups
Culturally and linguistically diverse (CALD) communities	Utilities providers	Recreational users of Corio Bay
Traditional Owner and Indigenous groups	Employees and representatives	Media

Appendix A contains an illustrative stakeholder list. The section below on landowners and occupiers provides further detail on potentially affected owners and occupiers of land and the *Pipelines Act 2005* pre-licence consultation process.

Issues identification and consultation

Appendix B provides details of pre-EES consultation conducted. Below is a summary of the key interests and issues that we have been hearing about from stakeholders during consultation to date, as well as proposed future consultation.

What we've heard	Actions to Respond
Safety and security	<ul style="list-style-type: none"> • Technical study report on Safety, Hazard and Risk to be prepared as part of EES study program to assess safety risks. • Results of safety studies and assessments will be presented to the community for comment during the EES process. • Safety subject matter experts available at community sessions to discuss the process of Quantitative Risk Assessment (QRA) and LNG safety. • Measures implemented to ensure security of facilities presented at community sessions.
National energy policy and future use of gas	<ul style="list-style-type: none"> • Provision of an objective assessment on the economic benefits of the Project. • Assessment of the impact of the 'with Project' and 'no Project' scenarios othe Victorian and east coast gas markets, including in relation to gas price, supply, the composition of energy generation and greenhouse gas emissions. • Utilisation of industry groups and energy authorities at community meetings.
Geelong Energy Hub	<ul style="list-style-type: none"> • Provision of information on the broader Energy Hub. • Early and ongoing engagement with elected representatives (Ministers and Local Councillors) • Media releases
Job opportunities	<ul style="list-style-type: none"> • Businesses and individuals expressing interest in supplier or employment opportunities are provided with Project website and email details. Records of expressions of interest are kept on file and will be reviewed when the appropriate project phase commences. • Details of how to register an Expression of Interest as a Project supplier shared with local businesses and business associations. • Early and ongoing involvement of local Chamber of Commerce / other business and industry associations. • Targeted networking events. • Existing Viva Energy indigenous employment program.
Geelong Refinery viability	<ul style="list-style-type: none"> • Early and ongoing engagement with elected representatives (Ministers and Local Councillors) • Recently appointed Refinery Manager has undertaken 'roadshow' of introductory presentations • Viva Energy Town Hall events • Media releases
Environmental impacts – local land environment	<ul style="list-style-type: none"> • Proposed pipeline to be located within already disturbed, existing pipeline corridor as far as practicable and any encroachment onto 'Corio Native Grassland Reserve' minimised.

	<ul style="list-style-type: none"> As recommended by specialist ecologists preliminary ecological surveys were followed by Spring surveys of areas of potential threatened species habitat. Surveys confirmed no threatened species habitat present and no native vegetation clearance required within the proposed pipeline corridor. The findings of the technical assessments on terrestrial ecology will be presented to the community for comment during the EES process. Availability of subject matter experts at community sessions and/or technical workshops.
<p>Environmental impacts – Corio Bay marine environment and water quality (including Port Phillip Bay (Western Shoreline) and Bellarine Peninsula Ramsar site)</p>	<ul style="list-style-type: none"> Potential impacts on the marine environment and water quality will be investigated by technical specialists through the EES integrated study program. Early and ongoing engagement with regulators on dredging and spoil disposal methodology. Results of technical studies will be presented to the community for comment during the EES process. Availability of subject matter experts at community sessions and/or technical workshops.
<p>Greenhouse gas emissions</p>	<ul style="list-style-type: none"> Viva Energy is a founding member of the Climate Leaders Coalition, an initiative of The B Team Australasia. We will continue to work together with other businesses to develop our respective strategies to reduce emissions, share learnings, collaborate on opportunities, and have a stronger public voice on the need for change. Calculation of direct and indirect greenhouse gas emissions for construction and operation phases of the Project which will include transportation of the LNG, the Floating Gas Terminal, treatment facility, transmission pipeline and pipeline connection infrastructure. Results of technical studies will be presented to the community for comment during the EES process.
<p>Local amenity</p>	<ul style="list-style-type: none"> Ongoing engagement with potentially affected residents and businesses. Provision of visual ‘mock-ups’ of Project infrastructure to demonstrate scale / visibility Noise and air quality monitoring will inform design / mitigation measures, operating parameters and selection of construction methodologies. Results of technical studies on noise (during construction and operation including port and maritime operations) and air quality will be presented to the community for comment. Focused engagement with residents within or immediately adjacent to the pipeline corridor during route refinement. Traffic study will inform any impacts on traffic and management practices
<p>Cultural awareness and protection of cultural heritage</p>	<ul style="list-style-type: none"> Regular engagement with WTOAC Experienced Heritage Advisor engaged to assess the potential impact of the Project on Aboriginal cultural heritage and determine, in consultation with WTOAC, the measures required for management and protection. Existing Viva Energy Reconciliation Action Plan

The table below lists the interests and issues identified as relevant to each stakeholder group.

Stakeholder Group	Issues
Local government	Geelong Refinery viability Economic development and jobs Geelong Energy Hub Safety and security Greenhouse gas emissions Local amenity: noise, air quality, odour, visual, traffic
Victorian and Commonwealth governments	National energy policy and the use of gas Geelong Refinery viability Economic development and jobs Geelong Energy Hub Environmental impacts – local land environment Environmental impacts – Corio Bay marine environment and water quality Safety and security
Regulatory agencies / authorities	Geelong Refinery viability Safety and security Environmental impacts – local land environment Environmental impacts – Corio Bay marine environment and water quality Greenhouse gas emissions Geelong Energy Hub
Business and industry	Economic development and jobs Safety and security Environmental impacts
Port users / commercial shipping	Economic development and jobs Safety and security Local amenity: visual
Neighbours and local residents	Safety and security Local amenity: noise, air quality, odour, visual, traffic Environmental impacts – local land environment Environmental impacts – Corio Bay marine environment and water quality Economic development and jobs Geelong Refinery viability

<p>Landowners and occupiers</p>	<p>Land access</p> <p>Safety and security</p> <p>Local amenity: construction and operational noise, construction traffic</p> <p>Environmental impacts – local land environment</p>
<p>CALD communities</p>	<p>Economic development and jobs</p> <p>Local amenity: noise, odour, visual, traffic</p> <p>Safety and security</p>
<p>Community and environment interest groups</p>	<p>National energy policy and the use of gas</p> <p>Greenhouse gas emissions</p> <p>Environmental impacts – local land environment</p> <p>Environmental impacts – Corio Bay marine environment and water quality</p> <p>Safety and security</p> <p>Local amenity: noise, air quality, odour, visual, traffic</p>
<p>Utilities and infrastructure providers</p>	<p>Safety and security</p>
<p>Recreational users of Corio Bay</p>	<p>Local amenity: noise, visual</p> <p>Environmental impacts – Corio Bay marine environment and water quality</p> <p>Safety and security</p>
<p>Traditional Owners and Indigenous groups</p>	<p>Cultural awareness and protection of cultural heritage</p> <p>Economic development and jobs; opportunities for indigenous people</p>
<p>Employees and representatives</p>	<p>Safety and security</p> <p>Economic development and jobs</p> <p>Geelong Refinery viability</p> <p>Local amenity: noise, odour, air quality</p>
<p>Media</p>	<p>National energy policy and the use of gas</p> <p>Geelong Refinery viability</p> <p>Economic development and jobs</p> <p>Safety and security</p> <p>Environmental impacts – local land environment</p> <p>Environmental impacts – Corio Bay marine environment and water quality</p>

Landowners and occupiers

Title and other searches have been completed along the proposed pipeline corridor to identify owners and occupiers of land to whom notice must be given as required by the *Pipelines Act 2005*.

The search results indicated that there are approximately 10 private landowners other than Viva Energy. These private landowners include Ports Pty Ltd, Geelong Grammar School, the Baptist Union of Victorian and several other individual landowners. Preliminary identification of occupiers has been undertaken, and there will be further clarification of occupier status once communication has taken place with all landowners.

It should be noted that the majority of the private individual landowners hold small parcels of land in a former subdivision now within the protected 'Corio Native Grasslands Reserve' which is managed by City of Greater Geelong. Our preliminary consultation with Council indicated that these subdivisions are historical and remain physically vacant, and are subject to a voluntary Council buy-back scheme.

'Near-neighbours' who may also be impacted by the construction and operation of the pipeline have been identified as predominantly private landowners and occupiers, including Geelong Grammar School and the residential properties on the east side of Macgregor Court, Lara. This will be also be clarified further through consultation activities.

As described above, the proposed pipeline corridor follows existing pipeline corridors. The private landowners and occupiers of the residential properties potentially affected by either the construction or operation of the proposed pipeline are considered to be familiar with such activities as there are already Viva Energy-owned licensed hydrocarbon pipelines situated on or adjacent to their land. Viva Energy maintains communication with landowners and occupiers affected by their existing pipelines to ensure they are adequately informed about planned activities and will continue to provide information for the proposed pipeline in a way that is appropriate and able to be easily understood.

The proposed pipeline route would also traverse a number of land parcels that are owned and managed by statutory authorities and local government, including VicRoads and City of Greater Geelong. Where the proposed pipeline traverses Crown land Viva Energy will engage with relevant managers of Crown land and Crown land Ministers.

Viva Energy will prepare and provide formal notices to landowners and occupiers as prescribed by sections 19, 27, and 32 of the *Pipelines Act 2005*. A sample Notice of Intention to Access Land for Survey and Notice of Pipeline Corridor, under sections 19 and 27 respectively, are provided in Appendix C. Appendix D contains consultation information, in the form of fact sheets which comply with the *Pipelines Act 2005* and describe the proposed activities (Pipeline and Pipeline Construction Fact Sheets), management of potential adverse impacts (Pipeline Fact Sheet) and statutory procedures which will be followed (Pipeline Regulatory Approvals Fact Sheet).

Landowners and occupiers affected by the pipeline may seek independent legal advice on any concerns they may have with regard to legal implications of the activities which could include potential impacts on their land. Pre-defined and agreed reasonable costs incurred in seeking legal advice in relation to the pipeline will be reimbursed by Viva Energy. Advice may also be obtained from DELWP Pipeline Regulation (contact details on page 28).

The following table provides an overview of the *Pipelines Act 2005* pre-licence and licence application process which Viva Energy will follow.

Item	Event	Timing
Notice of Intent to Enter Land – (access to land for purposes of pipeline survey)		
1.	Victorian Minister for Energy, Environment and Climate Change (the Minister) advises proponent of decision in relation to the Consultation Plan submitted for approval (i.e. this document).	Determination to be made 21 days from submission date
2.	If approval is granted in accordance with section 18(2) of the <i>Pipelines Act 2005</i> : <ul style="list-style-type: none"> ➔ Notice of Intention to Enter Land for Survey issued to landowners and occupiers (and Crown land Minister if applicable) ➔ Initial discussion held with landowners and occupiers regarding land access required for survey 	Notice of Intention to Enter Land for Survey may be issued (pending approval as part of the Consultation Plan)
3.	Pipeline proponent establishes agreements with landowners and occupiers to enter land and conduct pipeline survey activities (and seek consent from the Crown land Minister if applicable)	Proponent seeks agreements for access after Notice of Intention to Enter Land for Survey has been issued
If an access agreement with a landowner or occupier has NOT been obtained (assuming proponent has taken all reasonable steps)		
3(a)	If an agreement has NOT been reached with landowners or occupiers, after all reasonable steps have been taken (as per section 20 of the <i>Pipelines Act 2005</i>), the proponent may apply to the Minister for consent to enter the land	Application to the Minister may occur 14 days after the issue of Notice of Intention to Enter Land for Survey
3(b)	The proponent advises the landowner and occupier if proceeding with an application to the Minister for land access	Advice to be provided to landowner and occupier upon application to the Minister
3(c)	Landowners and occupiers may advise the Minister of their reasons for refusing land access to the proponent	Advice to be provided to the Minister within 7 days of receiving notification of the application from the proponent
3(d)	Minister provides a decision regarding the application for consent to enter land	Minister provides a decision within 28 days of receiving the application
Notice of Pipeline Corridor – (including agreements for land access)		
4.	Pipeline proponent provides a Notice of Pipeline Corridor to landowners and occupiers	Notice of Corridor may be issued (pending approval as part of this Consultation Plan)
5.	Pipeline proponent enters into agreements with landowners to purchase an easement over pipeline corridor (or easement/licence/lease for Crown or Public Authority land as per Part 6 of the <i>Pipelines Act 2005</i>)	Proponent seeks agreements after the Notice of Corridor has been issued
If an agreement to purchase an easement is NOT reached		
5(a)	The proponent may submit an application to the Minister for consent to compulsorily acquire an easement (and give notice to the landowner and occupier of the application)	At least 6 months after issue of the Notice of Pipeline Corridor (but may be sooner with agreement of the Minister)
5(b)	If an application is made, the proponent must notify the Registrar of Titles of the application (along with prescribed information as per section 91 of the <i>Pipelines Act 2005</i>)	Without delay after application to the Minister to compulsorily acquire the easement

Item	Event	Timing
	5(c) The landowner and/or occupier has the option to make a submission to Minister regarding the proponent's application	The submission is to be made on or before the 'submission date' as determined by the Minister
	5(d) The Minister provides a decision regarding compulsory acquisition of the easement. (Note: any consented acquisition would follow the framework of the <i>Land Acquisition and Compensation Act 1986</i>)	Decision to be made within 28 days of either (whichever is later): → Submission date of the application; or → Determination of the associated application to construct and operate the pipeline
Notice of Application – (notification of an application for a 'Licence to construct and operate a pipeline')		
6.	Pipeline proponent may apply to the Minister for a Licence to construct and operate a pipeline	Readiness of proponent in relation to the requirements of the application (as prescribed by the <i>Pipelines Act 2005</i>).
7.	Following application for a Licence, the pipeline proponent must provide a Notice of Application to: → All landowners and occupiers of land directly affected by the proposed pipeline; and → The Victorian Minister for Planning; and → The Victorian Minister for Water; and → Any relevant Crown land Minister for Crown land affected by the pipeline; and → Each responsible authority for an area affected by the pipeline; and → Any Department Head of a Government department, public authority, person or body specified by the Minister. Additionally, the proponent must publish a notification in a generally circulated newspaper in Victoria.	The Minister determines the applicable 'submission date' for the proponent to include in the Notice – the provision of the Notice follows this determination. Minister determines 'submission date' once satisfied the application is complete.
8.	Any affected person may make a written submission to the Minister regarding the licence application.	The submission in writing is to be made on or before the 'submission date' as determined by the Minister.
9.	The Minister provides a determination regarding the licence application.	After the 'submission date' the applicant may request a determination. The Minister may request the applicant to provide details of how submissions have been addressed. The Minister provides a determination within 28 days after the last of the following: → The applicant's request for a determination → Receipt of the details requested by the Minister → Receipt of the panel report (if submissions referred to a panel) → Receipt of a EES effects Assessment → Completion of relevant procedures under the Native Title Act This timing is subject to the Minister's direction as per section 48 of Part 5 of the <i>Pipelines Act 2005</i> .

Engagement and consultation approach

Viva Energy's core business values – integrity, responsibility, curiosity, commitment and respect – are the foundation of how the Company approaches its business endeavours. Viva Energy's commitment to sustainable development requires balancing short and long term interests, as well as integrating economic, environmental and social considerations into business decision-making. Viva Energy's Business Principles and Code of Conduct can be located on the website: www.vivaenergy.com.au in the 'About Us' section.

Viva Energy recognises the importance of stakeholder engagement and consultation, and the value it brings to the planning, design, construction and operational phases of infrastructure projects, including the management of community expectations and considerations of various stakeholders.

We are committed to proactively engaging with those stakeholders who may be affected, throughout the life of proposed projects, providing detailed information to ensure a thorough understanding of the project scope, any potential impacts and to ensure there is a transparent feedback process.

Viva Energy intends to implement:

- A process where stakeholders will be informed about the Project and associated investigations and technical studies;
- A program which will encourage participation and allow stakeholders the opportunity for input; and
- A process which gives stakeholders the opportunity to provide feedback on the EES.

The Consultation Plan is not intended to follow a highly prescriptive format or approach, or to limit the consultation that is undertaken. Consultation will evolve, and the plan will be modified throughout the process to respond to changing stakeholder needs and any issues raised. The Consultation Plan has been prepared to align with the planned technical study program to assist in identifying issues warranting investigation and/or framing study methodologies including opportunities for targeted stakeholder input where appropriate.

Consultation would take place taking into account any COVID-19 restrictions applicable at the time of the required consultative aspect. This is outlined further below.

Consultation principles

Viva Energy recognises that regular dialogue and engagement with stakeholders is essential to project success and maintaining its social licence to operate. Consultation and engagement will be undertaken in accordance with Viva Energy's Business Principles and Code of Conduct and the principles as outlined in the International Association for Public Participation (IAP2) spectrum. Under this framework stakeholder engagement will operate under five overarching principles of effective consultation, as outlined below.

**Communication:
Objective and Principles**

- Right information, right time
- Clear, accurate and consistent
- Two-way (both sharing and understanding)

**Communication:
Consultative Approach**

- Timely distribution of clear, accurate and relevant information
- Adapting communications to meet needs of different stakeholders
- Project to involve trained staff with strong communication skills

**Transparency:
Objective and Principles**

- Clear consultative process
- Easy to comprehend information
- Respectful (reporting and privacy)

**Transparency:
Consultative Approach**

- Clearly outline the consultation process (e.g. this plan)
- Focused communication materials supplemented with discussions
- Use of records management systems to appropriately reflect communications

**Collaboration:
Objective and Principles**

- Cooperative behaviours
- Focus on mutual benefit

**Collaboration:
Consultative Approach**

- Listening and responding with integrity
- Responsiveness to issues raised by stakeholders and the community

**Inclusiveness:
Objective and Principles**

- Stakeholder recognition
- Early and sustained involvement
- Consideration of all views

**Inclusiveness:
Consultative Approach**

- Early identification of stakeholders
- Seek input and give appropriate consideration to all feedback
- Process for following up on all items raised through consultation

**Integrity:
Objective and Principles**

- Foster mutual respect and trust
- Strive to exceed expectations

**Integrity:
Consultative Approach**

- Project governance to ensure quality of consultation process
- Full compliance with regulatory requirements
- Commitment to timeframes for response to feedback

Consultation methods

Viva Energy will engage and consult with stakeholders through channels best suited to the particular communications or stage of the Project, in accordance with stakeholder preferences and utilising any COVID-19 safe channels where restrictions are in place. A broad range of engagement activities and communication tools will be used as summarised below.

Print & digital	
Webpage	<ul style="list-style-type: none"> - A dedicated page on the Viva Energy website has been established to provide information regarding the Project including details of the proposed activities, communication collateral and contact details. - Relevant documents will be placed on public exhibition on the webpage where required by statutory processes or as directed by the regulator(s). - The webpage will be updated as new information becomes available - This webpage is www.vivaenergy.com.au/gas-terminal
Video	<ul style="list-style-type: none"> - Videos to explain the project, for example a video infographic has been created with visuals explaining the Geelong Energy Hub and the Project
'Refinery Update' newsletters	<ul style="list-style-type: none"> - A newsletter distributed via letter box drop to neighbouring industry/businesses, Norlane, Corio, North Geelong and North Shore residents
E-news updates	<ul style="list-style-type: none"> - E-news updates would be sent to registered 'subscribers' and stakeholders - Provide information about the Project (such as status updates and key milestones) and highlight opportunities for engagement and consultation - Encourage stakeholders to sign-up to receive e-news updates when they visit the Project website or attend an information session or forum
Social Media	<ul style="list-style-type: none"> - Information about key milestones to be posted on the Viva Energy social media platforms including LinkedIn, Facebook and Twitter feeds
Letters and emails	<ul style="list-style-type: none"> - Letters and emails may be used as an initial consultation tool to introduce the Project and provide contact details to stakeholders (or landowners and occupiers). - Written communications used throughout the Project may include formal correspondence (such as those which fulfil requirements under the <i>Pipelines Act 2005</i>), Project updates regarding developments or upcoming activities, and specific responses to issues, concerns or requests.
Factsheets	<ul style="list-style-type: none"> - Online and printed collateral. Topics could include: Gas Terminal Project, LNG Safety, Managing Floating Gas Terminal seawater discharge. This collateral would cover Frequently Asked Questions. - Available in hard copy at community information sessions, meetings etc and published on the Project website. - The Pipeline, Pipeline Regulatory Approvals and Pipeline Construction fact sheets (Appendix D) have been prepared to comply with the <i>Pipelines Act 2005</i> and will be provided to all landowners and occupiers, and made available to other stakeholders through the Project website. - A dedicated email address - energyhub@vivaenergy.com.au - is provided in the Project and pipeline specific fact sheets and displayed on the Project webpage.

Maps and other visual aids	<ul style="list-style-type: none"> - Clear maps displaying project scope and options and other aspects - Posted online and available at information sessions.
Media & advertising	<ul style="list-style-type: none"> - Radio, print and digital media releases/advertising will help inform people about the Project and feedback opportunities. - Public notices to be placed in local and state newspapers to promote upcoming engagement activities. - Adverts placed in local newspapers and newsletters
CALD communication	<ul style="list-style-type: none"> - We will consult with CALD communities on how they want to be engaged.
Engagement	
Meetings	<ul style="list-style-type: none"> - Meetings with potentially affected landowners and occupiers (or 'near neighbours') in the proposed pipeline corridor. A consultation focal point will be designated for each landowner and occupier. - Meetings with Government, regulators, Registered Aboriginal Party (WTOAC), stakeholders and community representatives individually or in small groups. - Provide updated Project information, seek understanding of stakeholder and community issues or concerns and potential opportunities for future engagement - Foster honest, direct feedback on the Project
Online	<ul style="list-style-type: none"> - Web presence to provide information and collect feedback. Feedback methods include: surveys, feedback form and dedicated email address: energyhub@vivaenergy.com.au
Community information sessions and events	<ul style="list-style-type: none"> - An opportunity for community and stakeholders to meet the Project team and ask questions and/or express concerns. - Sessions to be advertised broadly and held in accessible venues to allow a wide cross section of the community to attend. - We will consider formal events, displays in public areas, drop-in sessions and online events.
Business and industry forums	<ul style="list-style-type: none"> - Events and forums that brings together groups of businesses and associations in the Geelong region to promote awareness of the Project, understand perceptions and any issues and discuss potential opportunities for local businesses
Utility and infrastructure provider workshops	<ul style="list-style-type: none"> - To be conducted during pipeline development (such as involvement in safety management studies)
Government briefings	<ul style="list-style-type: none"> - Provide updates either verbally or in written form to elected representatives on the progress of the Project as part of normal engagement schedule or as a result of key milestones being reached
1800 number	<ul style="list-style-type: none"> - The Project has established a toll free phone number – 1800 515 093 - which is provided in the Project and pipeline specific fact sheets and displayed on the Project webpage. - Phone communications are particularly useful as a method for managing more urgent or out-of-hours communications. - All contact received through this channel will be logged and responded to.

COVID-19 Restrictions

Viva Energy’s stakeholder consultation and engagement strategy is based on communicating through a range of channels. The strategy will be reviewed and adapted in line with directions and advice from Government and authorities on restrictions to manage COVID-19. Viva Energy is committed to safely meeting with our stakeholders in order to enable transparent, direct feedback on the proposed Project and will conduct all consultation and engagement activities in accordance with COVID-19 restrictions.

Project timeline and consultation program

Communications and engagement is a key component of the Gas Terminal Project. As part of this work, the team are constantly communicating with Government, regulators, business and industry, our neighbours and the community through standing channels including the Viva Energy website, LinkedIn, Twitter, 1800 phone number, energyhub@vivaenergy.com.au, meetings and briefings, and letters and emails. An outline of when and how the proposed engagement activities and communication tools will be used to support consultation during the EES and approvals application process is provided below. Timeframes shown are indicative only.

Indicative Timing	Project Activity	Proposed Engagement Activities	Proposed Communication Activities
<p>End 2020</p> <p>Submission of referral / Minister's decision</p> <p>- complete</p>	<ul style="list-style-type: none"> - Further site assessments and technical studies to support EES referral - Submit EES referral for Minister's decision 	<ul style="list-style-type: none"> - Meet with Government and regulatory agencies / authorities - Meet with neighbours - Presentations to Geelong business and industry groups - Meet with WTOAC - Online engagement - Respond to email and phone queries 	<ul style="list-style-type: none"> - Webpage information - Factsheets - 'Geelong Refinery Update' in local paper and letterbox drop (residents of Corio, Norlane & North Shore) - Introductory letters to Corio Bay recreational user / community and environment interest groups - Introductory letters to residences within, or adjacent to (i.e. 'near neighbours'), pipeline corridor - Announcements in print and digital media
<p>Early 2021</p> <p>Submission of draft EES Study Program / EES Scoping Requirements</p>	<ul style="list-style-type: none"> - Submit draft Study Program (to inform draft scoping requirements) and this consultation plan for approval - First Technical Reference Group (TRG) meeting (TRG convened by DELWP) - Finalise scoping requirements (following public exhibition of draft scoping requirements by DELWP) - Further detailed site assessments and technical studies 	<ul style="list-style-type: none"> - Landowner and occupier engagement (to discuss arrangements for survey activities, development constraints and other considerations) - Stakeholder meetings - Community information session - Government briefings - Business and industry forums - Online engagement - Respond to email and phone queries 	<ul style="list-style-type: none"> - Provision of approved consultation materials including Project and pipeline-specific fact sheets and an individualised 'Notice of Intent to Enter Land for Survey' - Webpage Information - Factsheets - Letters and email - Announcements as required - Media and advertising

<p>Mid - late 2021</p> <p>Undertake studies and preparation of the EES</p>	<ul style="list-style-type: none"> - Continue with technical studies and impact assessments - TRG meetings to be conducted - Prepare approval application documentation for exhibition (pipeline licence, works approval and draft Planning Scheme Amendment) - Prepare EES documentation for public exhibition in line with Minister’s scoping requirements - Submit EES documentation for adequacy review 	<ul style="list-style-type: none"> - Landowner and occupier engagement (to discuss the proposed pipeline corridor, construction right-of-way (ROW) and laydown areas, as well as associated contractual arrangements) - Community and stakeholder meetings - Community information sessions - Online engagement - Technical information sessions (as required) - Government briefings - Business and industry forums - Respond to email and phone queries 	<ul style="list-style-type: none"> - Provision of ‘Notice of Pipeline Corridor’ along with supplementary information as required - Webpage information - Fact sheets - Video - Maps - E-news updates - ‘Geelong Refinery Update’ - Social media - Letters and email - Media and advertising
<p>End 2021</p> <p>EES Public Exhibition and formal submission period</p>	<ul style="list-style-type: none"> - Exhibit EES documents (for public comment) - Exhibit approval application documentation (for public comment) - Liaise with local council to promote the EES and other exhibited documents 	<ul style="list-style-type: none"> - Landowner and occupier engagement - Community information sessions - Key stakeholder meetings and briefings - Respond to email and phone queries - Online engagement 	<ul style="list-style-type: none"> - Provision of ‘Notice of Application for a Licence’ along with supplementary information as required - Broad communication regarding the exhibition including: <ul style="list-style-type: none"> Webpage information E-news update Media and advertising Email Letterbox drop
<p>Early – mid 2022</p> <p>Minister’s Assessment and informing decisions</p>	<ul style="list-style-type: none"> - Continued consultation with the community and affected landowners about the status of the EES and regulatory applications 	<ul style="list-style-type: none"> - Landowner and occupier engagement - Key stakeholder meetings and briefings - Respond to email and phone queries 	<ul style="list-style-type: none"> - Ongoing broad communication about the Project including: <ul style="list-style-type: none"> Webpage information E-news updates Media and advertising Emails Letterbox drops

It should be noted that the statutory consultation process following completion of the EES is governed by DELWP. However, Viva Energy will maintain a number of Project communication channels to ensure a high level of engagement with the community during this phase.

An outline of the engagement activities on the Project over the coming months is available in a rolling plan on the Viva Energy website at www.vivaenergy.com.au/gas-terminal. The plan will be updated every three months.

Information and records management

Viva Energy will continue to use a dedicated stakeholder management database, Mipela GeoSolutions X-Info suite to record engagement and consultation activities and manage communications in an efficient and timely manner with stakeholders during the Project.

Information collected will include correspondence, agreements and records of direct contact regarding the proposed Project. All concerns and issues raised through consultation will be documented, along with details of their resolution (where applicable), to ensure feedback and learnings are incorporated into Project development and execution.

Furthermore, the database will be updated regularly as additional information becomes available. Access to this information will be restricted to only relevant Project personnel.

Privacy and use of confidential information

Information collected by Project personnel involving stakeholders will only be used for Project purposes and be managed in accordance with the *Commonwealth Privacy Act 1988*. The collection of personal information will be undertaken according to Viva Energy's Privacy Policy and will not be disclosed without consent except, if necessary, to prevent a threat to life or health, required or authorised by law, or reasonably necessary to enforce a law. Viva Energy's Privacy Policy is available at www.vivaenergy.com.au/contact-us/privacy-policy

Monitoring and reporting

Tools, activities and the program outlined in the Consultation Plan will be regularly assessed and revised as necessary to ensure that communication and engagement objectives are met. This will ensure that consultation is tailored to deal with any emerging issues, engagement opportunities or community preferences.

The effectiveness of the Consultation Plan will be determined through several measures including participation levels, community feedback, responses to engagement opportunities, webpage visits and sentiment captured through media monitoring. Participation levels and feedback received on the consultation process will be recorded, collected and considered as part of ongoing evaluation and continuous improvement of the program.

Reports on issues raised during consultation and how these have been addressed will be prepared and presented to the Technical Reference Group to ensure these are responded to, and to demonstrate how this feedback has been used to inform the EES.

In addition, reports will be generated from the stakeholder management database and will be provided to DELWP within five business days at the end of each calendar month. The monthly reporting will be undertaken until completion of the regulatory approval processes under the *Pipelines Act 2005*, by way of acceptance of the Construction Environmental Management Plan (CEMP) and Construction Safety Management Plan (CSMP). Following this, regulatory reporting will then be in accordance with the approved management documentation.

Communications – feedback and updates

Viva Energy will proactively consult and engage with the community and stakeholders throughout the EES process. These groups may also wish to contact Viva Energy throughout the EES process to seek/contribute additional information, and share their perspectives and positions regarding the proposed Project. Viva Energy commits to responding to all communications, whether enquiries, complaints or general feedback, in a clear, respectful and timely manner, and may utilise channels such as the internet to provide regular updates which address common queries or concerns.

Stakeholder feedback will be collected, recorded and considered as part of the ongoing development and refinement of the Project design and implementation, following the privacy considerations outlined previously. Through EES reporting to the Technical Reference Group (see above) Viva Energy will document how stakeholder input or feedback has informed the EES, and how and why Project changes were made in response.

Communications feedback and issues management

Stakeholders will have the opportunity to contact the Project team to share their views and seek further information in meetings or through the email address and phone number provided on the Project webpage and in the communications materials.

Feedback process

Upon receipt of an inquiry, complaint, suggestion or comment, Viva Energy will:

- Where relevant, seek to clarify and understand the request or comment
- Acknowledge the communication and provide the estimated timeframe for a response (or immediate feedback where possible)
- Record the communication in the stakeholder management database (and subsequently update with the resolution)
- Review the request or comment (including investigation if relevant) and provide feedback to the stakeholder within the committed timeframe

Depending on the particulars of the request or comment, feedback to the stakeholder will include:

- Provision of requested information where appropriate, or advice if information is not yet available, or is unable to be shared (i.e. unrelated/commercially sensitive queries)
- Advice regarding consideration of the suggestion/comment and how/if it has been incorporated into the Project (design and/or execution). This may include discussion of alternate solutions to address the stakeholder's concerns.
- Outcome of complaints review process, associated investigations and any follow-up actions
- Agreement/confirmation with the stakeholder as to whether further action is required, and any future commitments (such as deferring a particular action to a later stage in Project development/execution, where appropriate).

A summary of the inquiry, complaint, suggestion or comment and the feedback provided will be included in the monthly consultation report to DELWP.

Feedback timing

Throughout the EES Process:

- An initial acknowledgement of the stakeholder's communication will be provided within one (1) business day.
- Feedback will be provided to the stakeholder within three (3) business days of the original communication.

A stakeholder would be notified at the time of the request if feedback is not possible within the committed timeframe and an updated timing would be agreed.

Issues management

Stakeholders may raise issues or submit complaints about the proposed Project. Viva Energy takes concerns and complaints seriously and seeks to:

- Clarify and understand any concerns or complaints raised
- Consider and investigate (where required) concerns or complaints in a timely manner
- Communicate the outcome of reviews and investigations
- Commit to learnings from concerns or complaints

It is expected that the Project team will be able to resolve most issues directly; however, issues may be escalated for direction if required.

Further information

For further information contact	
Viva Energy Gas Australia Pty Ltd	<p>Level 16, 720 Bourke Street, Docklands VIC 3008</p> <p>1800 515 093</p> <p>www.vivaenergy.com.au</p> <p>energyhub@vivaenergy.com.au</p>
Department of Environment, Land, Water and Planning	<p>Information about the EES process for the proposed Gas Terminal Project will be available on the DELWP website</p> <p>https://www.planning.vic.gov.au/environment-assessment/referrals-and-decisions#Ref-2020-R18-Resources</p> <p>or via email to the Senior Impact Assessor, Impact Assessment Unit at</p> <p>environment.assessment@delwp.vic.gov.au</p> <p>Information about the pipeline licensing process is available from Pipeline Regulation on</p> <p>0439 799 598</p> <p>www.energy.vic.gov.au</p> <p>pipeline.regulation@delwp.vic.gov.au</p>

Abbreviations

Abbreviation	Description
AEMO	Australian Energy Market Operator
AER	Australian Energy Regulator
ACCC	Australian Competition & Consumer Commission
AMSA	Australian Maritime Safety Authority
APGA	Australian Pipelines and Gas Association
BOPL	Black Oil Pipeline
CALD	Culturally and Linguistically Diverse
CoGC	City of Greater Geelong
DAWE	Department of Agriculture, Water and Environment
DELWP	Department of Environment, Land, Water and Planning
DJPR	Department of Jobs, Precincts and Regions
DOT	Department of Transport
DPC	Department of Premier and Cabinet
DTF	Department of Treasury and Finance
EES	Environmental Effects Statement
EPA	Environment Protection Authority
ESV	Energy Safe Victoria
FID	Final Investment Decision
FSRU	Floating Storage and Regasification Unit analso known as a Floating Gas Terminal
ha	hectare
IAP2	International Association for Public Participation
km	kilometre
km ²	square kilometre
LNG	Liquefied Natural Gas
LNGC	LNG Carrier
LPG	Liquefied Petroleum Gas
m	metre
NBN	National Broadband Network (Company)

NM	Nautical Mile
PCP	Pipeline Consultation Plan
PJ	Petajoules
QRA	Quantitative Risk Assessment
RAP	Registered Aboriginal Party
ROW	Right of Way
SMS	Safety Management Study
SWP	South West Pipeline
TRG	Technical Reference Group
VFA	Victorian Fisheries Authority
VRCA	Victorian Regional Channels Authority
VTS	Victorian Transmission System
WAG	Westernport-Altona-Geelong Pipeline
WOPL	White Oil Pipeline
WTOAC	Wadawurrung Traditional Owners Aboriginal Corporation

Appendices

Appendix A: Illustrative stakeholder list - July 2021

Group	Stakeholders
Local government	City of Greater Geelong CEO and directorates/departments City of Greater Geelong Mayor and councillors
Victorian and Commonwealth government	Department of Environment, Land, Water and Planning (DELWP) <ul style="list-style-type: none"> - Minister for Planning - Minister for Energy, Environment and Climate Change Department of Premier and Cabinet Department of Treasury and Finance <ul style="list-style-type: none"> - Invest Victoria Department of Jobs, Precincts and Regions <ul style="list-style-type: none"> - Regional Development Victoria Department of Transport <ul style="list-style-type: none"> - Minister for Ports and Freight - Minister for Fisheries and Boating Commonwealth Department of Agriculture, Water and Environment (DAWE) <ul style="list-style-type: none"> - Minister for the Environment Commonwealth Department of Industry, Science, Energy and Resources (DISER) <ul style="list-style-type: none"> - Minister for Energy and Emissions Reduction Commonwealth Department of Home Affairs <ul style="list-style-type: none"> - Aviation and Maritime Security Division (formerly Office of Transport Security) Australian Energy Market Operator (AEMO) Australian Competition and Consumer Council (ACCC)
Regulatory agencies / authorities	Victorian Department of Environment, Land, Water and Planning (DELWP) <ul style="list-style-type: none"> - Pipeline Regulation Unit - Heritage Victoria - Impact Assessment Unit - Barwon South West Region Victorian Environment Protection Authority (EPA) Energy Safe Victoria (ESV) WorkSafe Victoria Victorian Regional Channels Authority (VRCA) Aboriginal Victoria VicRoads Transport Safety Victoria - Maritime Safety Fire Rescue Victoria (FRV) Parks Victoria

	<p>Victorian Fisheries Authority (VFA)</p> <p>Corangamite Catchment Management Authority (CCMA)</p> <p>Commonwealth Department of Agriculture, Water and Environment (DAWE) - Environmental Approvals Division</p> <p>Australian Maritime Safety Authority (AMSA)</p> <p>Australian Energy Regulator (AER)</p> <p>Sustainability Victoria</p>
Neighbours and local residents	<p>Neighbouring business and industry</p> <p>Residents of North Shore, Corio and Norlane</p> <p>Residents of Greater Geelong</p>
Landowners and occupiers	<p>Pipeline corridor: landowners and occupiers</p> <p>Pipeline corridor 'near-neighbours': landowners and occupiers</p>
Local business and industry	<p>Quantem</p> <p>Barwon Water</p> <p>Midway</p> <p>GrainCorp</p> <p>Lyondell Bassell</p> <p>GeelongPort</p> <p>AMOSC</p> <p>Port Phillip Sea Pilots</p> <p>Committee for Geelong</p> <p>Geelong Chamber of Commerce</p> <p>Geelong Manufacturing Council</p> <p>Geelong Region Alliance (G21)</p> <p>Geelong Business Club</p>
Community and environment interest groups	<p>Environment Victoria</p> <p>Gas Free Geelong</p> <p>Geelong Environment Council</p> <p>Geelong Sustainability</p> <p>Doctors for the Environment</p> <p>Bayside Climate Crisis Action Group</p> <p>Lighter Footprints</p> <p>Victorian National Parks Association</p> <p>Geelong Field Naturalists Club</p> <p>BirdLife Bellarine Peninsula</p> <p>North Shore Residents Group</p>
Traditional Owners and Indigenous groups	<p>Registered Aboriginal Party: Wadawurrung Traditional Owners Aboriginal Corporation (WTOAC)</p> <p>Wathaurong Aboriginal Cooperative</p>
Recreational users of Corio Bay	<p>VRFish</p> <p>Corio Bay Anglers Club</p> <p>Lagoon Boat Club</p> <p>Royal Geelong Yacht Club</p>
Utility and infrastructure providers	<p>APA</p> <p>Electricity – Ausnet, Powercor</p> <p>Water - Barwon Water</p> <p>Telecommunications – NBN, Nextgen, Optus, Telstra</p> <p>City of Greater Geelong</p> <p>VicRoads</p>
Employees and representatives	<p>Geelong Refinery personnel</p> <p>Viva Energy personnel</p> <p>Unions</p>
Media	<p>News organisations – print, television, digital</p>

Appendix B: Details of Pre EES consultation

In October 2019, Viva Energy commenced preliminary engagement to socialise the Gas Terminal Project as part of the Geelong Energy Hub with individuals and stakeholders that would be directly involved in or impacted if it proceeded. This initial engagement primarily involved Commonwealth, State and local governments as well as key regulators. Subsequent engagement then expanded to include the refinery's closest neighbours, local Geelong associations and businesses and the broader community primarily through announcements in the media, with information material about the Gas Terminal Project available on the Viva Energy website.

Further communications and consultation activities have taken place as follows:

- October 2020 – ongoing: Meetings with Traditional Owners and Indigenous groups
- October 2020 – ongoing: Meetings with City of Greater Geelong Council
- October 2020 – ongoing: Meetings with regulatory agencies / authorities
- October 2020 – ongoing: Commonwealth and State Government briefings and meetings
- October 2020 – ongoing: Meetings with business and industry groups
- October 2020 – ongoing: Meetings with Geelong Refinery neighbours
- November 2020: Gas Terminal Project webpage 'go live'
- November 2020: Publication of Gas Terminal Pipeline Consultation Plan on the webpage
- November 2020: Publication of Project factsheets on the webpage
- November 2020 – ongoing: Meetings with utility providers
- December 2020 - ongoing: Online registration for Project updates and survey
- December 2020: Notification of February Community Information Session on webpage
- December 2020: Distribution of Geelong Refinery Update leaflet, including Project overview and notification of February Community Information Session, via letterbox drop to 1394 residences in Corio, Norlane and North Shore
- December 2020: Introductory letters and Geelong Refinery Update leaflet posted to all 14 residences within, or adjacent to, the pipeline corridor
- December 2020: Introductory letters and Geelong Refinery Update leaflet posted to 6 Corio Bay recreational user / community and environment interest groups
- December 2020: Advertorial, providing Project overview and notification of February Community Information Session published in the Geelong Independent (reach approx. 30,000 people)
- December 2020: Wide coverage of the Project in local, national and international press and social media regarding the announcement of corporate partners.

Appendix C: Sample Notices

C.1 Sample Notice of Intention to Enter Land for Survey and Attachment 1: Survey Activities

C.2 Sample Notice of Pipeline Corridor

C.1 Sample Notice of Intention to Enter Land for Survey

Pursuant to *Pipelines Act 2005* – Section 19 and *Pipelines Regulations 2017* – Regulation 6

<<For Private Land>> – To: [Name and address of the owner and occupier of the land]

<<For Crown Land>> – To: [Name and address of Crown Land Minister or name and address of the occupier]

Land: INSERT SPI Certificate of Title: Volume INSERT , Folio INSERT

Parish: INSERT Municipality: INSERT

Address: INSERT PROPERTY ADDRESS

In accordance with Section 19(1) of *the Pipelines Act 2005 (the Act)*, Viva Energy Gas Australia Pty Ltd (**Viva Energy**) (ACN 645 450 059) of Level 16, 720 Bourke Street, Docklands, 3008 hereby gives you Notice of its intention to enter your Land for the purpose of a survey.

In accordance with Section 19 of the Act and Regulation 6 of the *Pipelines Regulations 2017 (the Regulations)*, this Notice also contains the following information, and is accompanied by the “approved consultation information”:

Intended use of the proposed Pipeline

Viva Energy is proposing to construct and operate a new natural gas pipeline as part of its Gas Terminal Project. The key objective of the Project is to facilitate supply of a new source of gas for the south-east Australian gas market. The proposed pipeline would convey high pressure gas from a proposed Floating Storage and Regasification Unit, to be continuously moored at a proposed extension to the existing Refinery Pier adjacent to Geelong Refinery, to the existing Victorian gas transmission network at Lara.

Details of proposed survey

Survey activities may include engineering, environmental, cultural heritage and cadastral surveys. Details of the proposed surveys that may be carried out are shown in **Attachment 1**.

Name and address of the person or body engaged to carry out the survey for the proposed pipeline

Viva Energy will be coordinating and managing all surveys, which will be conducted by consultants authorised by Viva Energy. Should consultants not included on the list of authorised consultants be engaged to carry out the surveys further Notice pursuant to Section 19 of the Act will be given.

List of Authorised Consultants

Name	Address

Map of the proposed pipeline corridor or route

A map is attached of the proposed pipeline corridor or route over your land showing:

- The relevant part of the land over which the survey is proposed to be made; and
- The location of that land including the allotment and selection numbers, parish and municipal names and the boundaries of adjacent lands relating to the proposed survey.
- <<for Crown land map to show sufficient detail to identify the land>>

<<Map of the proposed pipeline corridor or route to be included with notice – A4 size and complying with the requirements above>>

Note to owners/occupiers of land

Under Section 20 of the Act, Viva Energy must take all reasonable steps to reach agreement with you in relation to the entry onto your land for the purpose of conducting the surveys for the proposed pipeline.

If Viva Energy is unable to obtain your agreement within 14 days after this notice has been given to you, Viva Energy may apply to the Minister for consent to enter your land under Section 22 of the Act.

Signed by Proponent:

Dated:

Attachment 1 - Survey Activities

Name of survey	Description of survey activities
Flora and fauna	<p>Assessment of discrete areas by a small team (2–3 people) by foot or in a light vehicle to identify any significant flora and fauna and manage any environmental impacts of the construction and operation of the pipeline.</p> <p>Flora surveys occur during daylight hours, the duration of the surveys will vary and it may be necessary to conduct some surveys at certain times of the year when certain species are more easily detected.</p> <p>Fauna surveys may occur at any time during the day or night and it may be necessary to conduct these studies at certain times of the year when certain species are more easily detected such as breeding or migration seasons. The survey method will depend on the species of interest but may involve a walk using spotlights, using specialist call back and recording equipment, and placing nets or traps.</p> <p>The survey will occur within the mapped targeted survey area shown in the <i>Notice of Intention to Enter Land for Survey</i> provided to you.</p>
Cultural heritage	<p>Assessment of areas by a small team (4-5 people) by foot or in a light vehicle to manage any impacts of the construction and operation of the pipeline to land and artefacts of cultural significance. Hand digging of shallow holes may be required at discrete locations. The survey will occur within the mapped targeted survey area shown in the <i>Notice of Intention to Enter Land for Survey</i> provided to you.</p>
Feature survey	<p>Assessment of areas by a small team (2-3 people) by foot or in a light vehicle, using surveying equipment to create a digital three dimensional image of physical features that the pipeline may effect (terrain, trees, building outlines, dams, water courses etc.). These measurements and images may be taken from anywhere on the Land within a distance of 100m of the proposed pipeline route (shown in the <i>Notice of Intention to Enter Land for Survey</i> provided to you). Pegs may be placed in the ground at fence-lines and at other discrete locations (which will be removed at the end of construction or beforehand on request).</p>
Cadastral survey	<p>A registered land surveyor travelling by foot or using a light vehicle to record the Property boundaries of the Land using surveying equipment.</p>
Soil conductivity	<p>Assessment of areas by a small team (2-3 people) travelling by foot or in a light vehicle, moving to discrete locations of the Property to measure electrical conductivity of soil. This data will inform the pipeline design. The measurement is made using a small hand-held probe inserted approximately 20cm into the ground.</p> <p>The survey will occur within the mapped targeted survey area shown in the <i>Notice of Intention to Enter Land for Survey</i> provided to you.</p>
Hydrology survey	<p>A small team (2-3 people) travelling by foot or in a light vehicle to locations on the Property, if a river or stream crosses the proposed pipeline route, to observe and record river or stream conditions. Where rivers or streams are present on the Land, the area to be inspected will extend up to 50m upstream and 50m downstream of the 'proposed pipeline route' shown in the <i>Notice of Intention to Enter Land for Survey</i> provided to you.</p>
Land condition survey	<p>A small team of 2-3 people will use a drill, typically mounted on the tray of a 4wd utility vehicle, to collect soil samples and test for chemical characteristics to inform the pipeline design and construction approach. The drill samples are less than 20cm diameter, however can reach a maximum depth of 2m. Because of this maximum depth, a metal detector and water jet may be used to confirm the location of any other underground utilities to avoid causing damage to existing infrastructure. Waste water created during the use of the water jet is collected in a wastewater tank through a vacuum system. Both the drill holes and water jet holes will be backfilled and surface restored. The survey will occur within the mapped targeted survey area shown in the <i>Notice of Intention to Enter Land for Survey</i> provided to you.</p>

Name of survey	Description of survey activities
Service location	<p>The purpose of this Survey is to confirm the location of underground service utilities (<i>underground infrastructure</i>). This information is required to inform the design of the pipeline such that underground infrastructure is not damaged during construction.</p> <p>A small team of 2-3 people travelling by foot or in a light vehicle will use a metal detector and a water jet to confirm the location of the underground infrastructure. Wastewater created during the use of the water jet is collected in a wastewater tank through a vacuum system. Areas disturbed during this Survey will be restored at the completion of the Survey. The Survey will occur within the mapped Survey Area shown in the map attached to the <i>Notice of Intention to Enter Land for Survey</i> provided to you.</p>
Pipeline location	<p>Laser scanning will be used to survey existing pipetracks to facilitate positioning of the new pipeline relative to existing pipelines. The information obtained from the laser scanning surveys is used to provide high precision three dimensional as-built plans and documentation. A small team (2-3 people) travelling by foot or in a light vehicle will undertake the survey. Laser scanners are non-contact devices that incorporate two components for data capture: a laser and a camera. This non-contact method is particularly useful for accurate surveying of hard to reach areas and areas restricted for reasons of safety.</p> <p>The Survey will occur within the mapped Survey Area shown in the map attached to the <i>Notice of Intention to Enter Land for Survey</i> provided to you.</p>
Geotechnical	<p>This Survey informs pipeline design relative to existing railways, rivers and major roads. It involves the use of a vehicle mounted drill rig (4WD or truck) and personnel (up to 10 people) to establish boreholes measuring 10 to 15cm in diameter and up to 20m in depth and/or the use of a narrow probe to test soil layers and confirm soil stability at discrete locations. At some locations a PVC pipe will be placed into the hole to keep the hole open and allow for the soil permeability to be assessed. Wherever a PVC pipe is installed, approximately 1m of the pipe will rise above the ground and flagging tape may be tied to the top of the pipe so that it can be easily located. The PVC pipe will be removed at the end of the survey period unless consent is granted for it remaining for use in the construction period. Samples of the drill cuttings will be taken for laboratory analysis and the remaining cuttings will be placed back into bore holes during back-filling and restoration. Survey vehicles may vary in size. The geotechnical Survey will occur within the Survey Area shown on the map attached to the <i>Notice of Intention to Enter for Survey</i> provided to you.</p>

C.2 Sample Notice of Pipeline Corridor

Notice under section 27 of the Pipelines Act 2005 to owners and occupiers of land in a pipeline corridor

To: [insert name and address of person(s) who owns or occupies land in the pipeline corridor]

I Viva Energy Gas Australia Pty Ltd (ACN 645 450 059) am considering applying for a licence to construct and operate a pipeline over the following land:

[insert a description of the land (including, if appropriate, a sketch showing the relevant part of the land) and title particulars].

A copy of a plan showing the pipeline corridor is attached to this Notice. [attach copy of a plan drawn to an appropriate scale showing the pipeline corridor]

The proposed pipeline is to convey high pressure gas between a proposed Floating Storage and Regasification Unit, to be continuously moored at a proposed extension to the existing Refinery Pier adjacent to Geelong Refinery, and the existing Victorian gas transmission network at Lara.

Information regarding the proposed pipeline, including the processes that will be followed for obtaining required approvals and details of how Viva Energy Gas Australia Pty Ltd proposes to consult with you is also attached. / was given to you with the Notice of intention to enter land for survey issued on: [insert date issued].

Signature of the Proponent:

Date:

Note 1

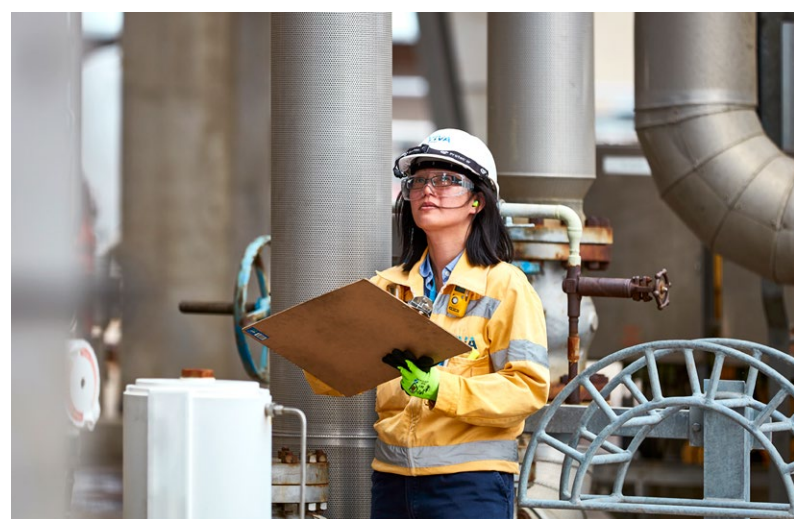
A pipeline corridor is a corridor of land within which a pipeline is proposed to be constructed under the **Pipelines Act 2005**. The final route of the proposed pipeline within the corridor is subject to consultation and approval under the **Pipelines Act 2005**.

Note 2

Under section 27(3) of the **Pipelines Act 2005** this Notice lapses after 12 months from the date of this Notice, unless the Minister administering that Act, extends that period in writing.

Appendix D: Fact Sheets

- D.1 Gas Terminal Project Fact Sheet
- D.2 Gas Terminal Pipeline Fact Sheet
- D.3 Pipeline Regulatory Approvals Fact Sheet
- D.4 Pipeline Construction Fact Sheet



Fact Sheet

Viva Energy Gas Terminal



Viva Energy Gas Terminal



Viva Energy is a leading Australian company which supplies about a quarter of our country's fuel needs. We have a proven track record in making, importing, blending and delivering fuels, lubricants, solvents and bitumen using our extensive national and international supply chains. For motorists and truck drivers, we supply Shell and Liberty branded service stations with millions of litres of fuel every year to keep them on the road.

We are a vital part of our country's current and future energy security. The Australian economy relies on the products we supply, our experience in operating supply chains safely and reliably, and our commitment to helping Australian motorists, businesses and industries. In Victoria, our refinery at Geelong manufactures and supplies more than half of the state's fuel needs and employs more than 700 people.

To support Australia's energy future, in June 2020 we shared our vision to create the Geelong Energy Hub at our refinery. Key to this vision is the plan to develop a gas terminal using a Floating Storage and Regasification Unit (FSRU) and a pipeline to get the gas to market.

The Gas Terminal being adjacent to the Geelong Refinery would leverage our capability as an existing Major Hazard Facility (MHF) operator and offer potential synergies between the two facilities such as the ability to reuse the FSRU seawater discharge in the refinery's existing operations.

Liquefied Natural Gas (LNG) would be sourced from local and worldwide suppliers and be transported by LNG carriers to the Gas Terminal in Geelong to help meet the projected gas shortage in south-east Australia.

LNG carriers would berth alongside the FSRU and unload the LNG where it will be stored and regasified as required, before being transported via a new Pipeline connecting to the Victorian Transmission System (VTS) to meet south-eastern Australian gas market demand.

Why do we need a gas terminal?

Victorian manufacturing, businesses and households currently consume over a third of gas demand in south-eastern Australia so having secure and competitive supply of gas is critical to our economy and our livelihoods.

A range of market experts (AEMO and ACCC) and commentators have advised that a gas shortfall could emerge in the south-east of Australia by 2023 and that a range of measures will be needed to fill this gap. This could include more exploration and development of gas reserves in southern Australia, pipeline expansions and/or the development of LNG terminals.

Details

The Viva Energy Gas Terminal Project (the Project) includes:

- 1 Extension of the existing Refinery Pier.
- 2 Localised dredging to accommodate new berth and ship turning (indicative area only).
- 3 Gas terminal using a Floating Storage and Regasification Unit (FSRU).
- 4 Aboveground section (~2.5km) of new pipeline from FSRU to new treatment facilities within refinery boundary.
- 5 Underground section (~4km) of new pipeline to the Victorian Transmission System (VTS) at Lara.

The project is subject to relevant regulatory and Viva Energy Board approvals.



Benefits

Gas supply	Location	Environment	Geelong Refinery
<p>New source of gas for south-east Australian Gas market to fill projected gas shortages</p> <p>Short gas Pipeline length (~6.5km) from gas terminal to VTS at Lara</p> <p>Majority of the Pipeline (~4.5km) will be underground</p> <p>Proposed Pipeline corridor impacts a small number of landholders</p>	<p>Strategic location in major bulk port</p> <p>Access to Port of Geelong shipping channel</p> <p>LNG carrier visits represent a small increase (~5%) in total ship traffic to Port of Geelong</p>	<p>Environmental impacts potentially minimised through proposed reuse of FSRU seawater discharge in existing refinery operations</p> <p>Limited number of sensitive receptors</p>	<p>Long history working with our neighbours and investing in our local community</p> <p>Existing industrial complex – operated by an experienced MHF operator</p> <p>Potential for FSRU seawater discharge to be managed within existing refinery licence</p>



Quick Facts

~200PJ

The approximate amount of gas Victoria uses each year (in Petajoules)

140PJ

The amount of gas each year our terminal could supply (in Petajoules)

60%

Of Victoria's gas used for household and business needs in 2019

3x

Victoria's gas demand in winter increases threefold compared with summer

20 to 45

The typical number of LNG carriers that would visit Geelong each year

1.5 days

The typical time it would take to discharge an LNG carrier

Reuse

The seawater discharge from the FSRU in existing refinery operations

~6.5km

The total length of the Pipeline from the FSRU to the Victorian Transmission System

~570m

The approximate length of the new pier

300m

The approximate length of an FSRU (in metres)

Timeline

We are about to commence more detailed environmental assessments and scoping works ahead of the relevant approvals processes. Community engagement and consultation is an important part of these processes and will be undertaken throughout the life of the Project.

The Project timeline is dependant on the regulatory approvals process, third party agreements, construction techniques, and Project execution.

Following regulatory approvals and any Final Investment Decision, we are targeting construction commencing in 2023, with the facility operational in 2024.

Consultation

Initial consultations have commenced and we will continue to engage with the community and other stakeholders throughout the Project.

For the gas Pipeline, engagement with any potentially affected landowners and occupiers will be required to conduct survey works and to finalise the proposed Pipeline alignment.

Details of any upcoming community consultation will be provided on the Project website.

Viva Energy will adhere to any Government imposed restrictions on public gatherings and consultation may be conducted virtually or via other COVID-safe methods such as, newsletters, letterbox drops, website updates etc.



If you have any questions about the Project, please contact Viva Energy's Project Team

1800 515 093
energyhub@vivaenergy.com.au
vivaenergy.com.au

VIVA
EnergyAustralia



Fact Sheet

Gas Terminal Pipeline

Gas Terminal Pipeline

Viva Energy is a leading Australian company which supplies about a quarter of our country's fuel needs. We have a proven track record in making, importing, blending and delivering fuels, lubricants, solvents and bitumen using our extensive national and international supply chains. For motorists and truck drivers, we supply Shell and Liberty branded service stations with millions of litres of fuel every year to keep them on the road.

We are a vital part of our country's current and future energy security. The Australian economy relies on the products we supply, our experience in operating supply chains safely and reliably, and our commitment to helping Australian motorists, businesses and industries. In Victoria, our refinery at Geelong manufactures and supplies more than half of the state's fuel needs and employs more than 700 people.

To support Australia's energy future, in June 2020 we shared our vision to create the Geelong Energy Hub at our refinery. Key to this vision is the plan to develop a gas terminal using a Floating Storage and Regasification Unit (FSRU) and a pipeline to get the gas to market.

The Gas Terminal being adjacent to the Geelong Refinery would leverage our capability as an existing Major Hazard Facility (MHF) operator and offer potential synergies between the two facilities such as the ability to reuse the FSRU seawater discharge in the refinery's existing operations.

The Gas Terminal would bring natural gas from various locations in Australia and overseas, to meet the projected gas shortage in south-east Australia.

More information about Viva Energy's proposed Gas Terminal is in the Project Factsheet on the Project website.

The Project is subject to relevant regulatory and Viva Energy Board approvals.

Gas Terminal Pipeline – proposed corridor

A new pipeline, approximately 6.5km in length and up to 600mm in diameter is proposed to take gas from the FSRU terminal to the existing Victoria Transmission System (VTS).

The Pipeline would be in two sections:

- An aboveground pipeline approximately 2.5km in length, connecting the FSRU to the new nitrogen and odorant injection facilities on refinery land; and
- An underground pipeline, approximately 4km in length, which will connect to the VTS at Lara.

The proposed Pipeline corridor is shown on the map. Further assessments will be undertaken as part of the consultation and approval process to inform the final pipeline route.

Stakeholder impact, environmental, cultural heritage and other surveys would be conducted to verify the land conditions and any potential constraints. These assessments will influence and inform the detailed design and final pipeline route. Potentially affected landowners, occupiers and stakeholders will be engaged throughout the process.



Project Benefits

New source of gas for south-east Australian Gas market to fill projected gas shortages

Short gas pipeline length (~6.5km) from gas terminal to VTS at Lara

Majority of the Pipeline (~4.5km) will be underground

Proposed Pipeline corridor impacts a small number of landholders

Consultation and Landowner Engagement

Viva Energy recognises the importance of engagement and consultation and the value it brings to the planning, development, construction and ongoing operation of infrastructure projects such as the proposed Gas Terminal Project.

Viva Energy will proactively engage and communicate with potentially affected landowners, occupiers and stakeholders during all phases of the proposed Project.

Engagement and consultation will be key to providing relevant information to landowners, occupiers and stakeholders about the Project and how they can provide feedback. The feedback will help to inform project management plans, land access agreements (where relevant) and address any potential concerns.

Viva Energy recognises and acknowledges the traditional custodians of the land on which the project is proposed. Relevant representative bodies for the traditional owners will be actively engaged in the native title and cultural heritage assessment process, including the project's Cultural Heritage Management Plan (CHMP).

Engagement with any potentially affected landowners and occupiers will be required to conduct survey works and to finalise the proposed Pipeline alignment. These engagements are planned for late 2020.

Viva Energy will adhere to any Government imposed restrictions on public gatherings and consultation may be conducted virtually or via other COVID-safe methods such as, newsletters, letterbox drops, website updates etc.





Managing Impacts

To manage our work and minimise any impact to landowners, occupiers, the surrounding community and environment, a number of project management plans will be developed for the different project phases. Pipeline construction may only proceed following regulatory approval of these plans.

Specific methods to manage potential impacts on the environment will be documented in an Environment Management Plan (EMP). This plan will specifically identify potential impacts to the environment arising from construction and operation of the pipeline and outline measures to avoid or minimise those impacts.

A Safety Management Plan (SMP) will also be prepared to identify any risks associated with the Pipeline construction and operation as well as measures to address those risks.

These management plans are subject to approval by the Minister administering the *Pipelines Act 2005 (Vic)* and Energy Safe Victoria respectively.

Potential impacts on private and public land will be minimised by undertaking pre-disturbance surveys of the land, consultation with landowners and occupiers and reaching appropriate access and construction agreements.

On-the-ground survey activities, further desktop assessments and consultation with stakeholders will identify any potential adverse impacts on land, health, safety and the environment.

Viva Energy has robust Health Safety and Environment management practices and will comply with all relevant industry standards and government regulations.

Project Timeline

We are about to commence more detailed environmental assessments and scoping works ahead of the relevant approvals processes.

Community engagement and consultation is an important part of these processes and will be undertaken throughout the life of the Project.

The Project timeline is dependant on the regulatory approvals process, third party agreements, construction techniques, and Project execution.

Following regulatory approvals and any Final Investment Decision, we are targeting construction commencing in 2023, with the Gas Terminal and Gas Pipeline operational in 2024.



If you have any questions about the proposed Pipeline or the Project, please contact Viva Energy's Project Team

1800 515 093
energyhub@vivaenergy.com.au
vivaenergy.com.au

Alternate sources of information

Department of Environment, Land, Water, and Planning
0439 799 598
pipeline.regulation@delwp.vic.gov.au
www.energy.vic.gov.au

Energy Safe Victoria
1800 800 158
info@energysafe.vic.gov.au
www.esv.vic.gov.au





Fact Sheet

Gas Terminal Pipeline Regulatory Approvals



Pipeline Regulatory Approvals

To support Australia's energy future, in June 2020 we shared our vision to create the Geelong Energy Hub at our refinery. Key to this vision is the plan to develop a gas terminal using a Floating Storage and Regasification Unit (FSRU) and a Pipeline to get the gas to market.

The Gas Terminal being adjacent to the Geelong Refinery would leverage our capability as an existing Major Hazard Facility (MHF) operator and offer potential synergies between the two facilities such as the ability to reuse the FSRU seawater discharge in the refinery's existing operations.

The Gas Terminal would bring natural gas from various locations in Australia and overseas, to meet the projected gas shortage in south-east Australia.

A new Pipeline, approximately 6.5km in length and up to 600mm in diameter is proposed to take gas from the Gas Terminal to the existing Victoria Transmission System (VTS) in Lara.

The Project is subject to regulatory and Viva Energy Board approvals and the Pipeline may only be constructed and operated with the consent of the Minister administering the *Pipelines Act 2005 (Vic)* in the form of a Licence to Construct and Operate a Pipeline.

More information about Viva Energy's proposed Gas Terminal is in the Project Factsheet on the Project website.

Pipelines Approvals

A number of regulatory approvals are required prior to the construction and operation of the Pipeline. The *Pipelines Act 2005 (Vic)* (the Act) and *Pipelines Regulations 2017* (the Regulations), provide a regulatory framework under which the development of a proposed pipeline must follow.

The Act and the Regulations include the manner in which Viva Energy needs to engage with regulatory authorities and potentially affected land owners, occupiers and stakeholders on the proposed Pipeline.

The Pipeline is also subject to a broad range of legislation not specific to pipeline construction and operation including:

- *Aboriginal Heritage Act 2006 (Vic)*
- *Environment Effects Act 1978 (Vic)*
- *Environment Protection and Biodiversity Conversation Act 1999*
- *Gas Safety Act 1997 (Vic)*
- *Heritage Act 2017 (Vic)*
- *Marine and Coastal Act 2018 (Vic)*
- *Native Title Act 1993 (Cth)*
- *Planning and Environment Act 1987*
- *Water Act 1989 (Vic)*

Private and Public Landowners and Occupiers

Viva Energy will explain the scope of the Pipeline and seek feedback from landholders and occupiers regarding the preliminary route. Meeting directly with landowners will help us better understand the nature of the impacted property and address any specific concerns regarding the design and construction of the Pipeline.

All engagements will be conducted with consideration to any Government imposed restrictions on public gatherings and consultation may be conducted virtually or via other COVID-safe methods such as, newsletters, letterbox drops, website updates etc. and in a manner that suits the requirements of landowners.

As part of this engagement process, affected land owners and occupiers will receive the following 'notices':

1. **Notice of Intent to Enter Land:** Advice that the Pipeline proponent seeks access to the land to perform survey activities to inform pipeline development.
2. **Notice of Pipeline Corridor:** Advice of the proposed Pipeline corridor.
3. **Notice of Application:** Advice if a proponent has applied to the Minister to construct and operate a pipeline.

Further information regarding this process may be viewed on the project website: <https://www.vivaenergy.com.au/operations/geelong/geelong-energy-hub>



Land Access

Viva Energy will be seeking landowner and occupier agreement to enter land along the proposed Pipeline route so that more detailed investigations can be undertaken, such as ecological and cultural heritage surveys.

If all reasonable steps to obtain agreement in relation to land access are unsuccessful Viva Energy may apply to the Minister for consent under the Act.

Land access would also be required to develop, construct and operate the Pipeline. The type of access and nature of associated activities would vary throughout the life of the project.

Surveys and Field Studies Phase

Temporary access would be required to perform assessments or surveys, along the proposed pipeline route. These activities may range from visual inspections to physical works, such as establishing temporary bore holes for soil samples.

Environmental field studies which are likely to require access to private land include the following surveys:

- Ecology – flora, fauna and aquatic ecology
- Soils and geology
- Cultural heritage



Construction Phase

Access would be required to prepare the area for construction and undertake the construction itself. The construction area is referred to as the construction 'right of way'.

This would include space for vehicle access, soil stockpiling and pipeline materials.

Operational Phase

Ongoing access would be required to operate and maintain the pipeline.

Land Easement Agreements

Viva Energy would seek to purchase easements from affected landowners following confirmation of the proposed Pipeline route.

An easement is an agreement registered on the title of the land that sets out the rights of a pipeline owner/operator to install, operate and maintain the Pipeline and also defines the restrictions on the landowner in the area of the easement such as restrictions on the planting of vegetation and other developments.

Viva Energy is committed to working with all affected landowners and occupiers in an open and respectful manner to provide fair, adequate and equitable compensation in reaching agreement on a pipeline corridor.

The Act provides the framework for easement establishment, including potential application of the *Land Acquisition and Compensation Act 1986* in the event that reasonable efforts have been unsuccessful with affected landowners.

Landowners would be notified of any request by Viva Energy to the Minister for consent to compulsorily acquire an easement and would then have the opportunity to make submissions to the Minister before a decision is made.

Independent Legal Advice

Landowners and occupiers affected by the Pipeline may seek independent legal advice on any concerns they may have with regard to legal implications of the activities which could include the project's potential impact on their land. Pre-defined and agreed reasonable costs incurred in seeking legal advice in relation to the pipeline will be reimbursed by Viva Energy.

Advice may also be obtained from:

Department of Environment, Land, Water, and Planning

T: 0439 799 598

E: pipeline.regulation@delwp.vic.gov.au

W: www.energy.vic.gov.au



If you have any questions about the proposed Pipeline or the Project, please contact Viva Energy's Project Team

1800 515 093

energyhub@vivaenergy.com.au

vivaenergy.com.au

Alternate sources of information

Department of Environment, Land, Water, and Planning

0439 799 598

pipeline.regulation@delwp.vic.gov.au

www.energy.vic.gov.au

Energy Safe Victoria

1800 800 158

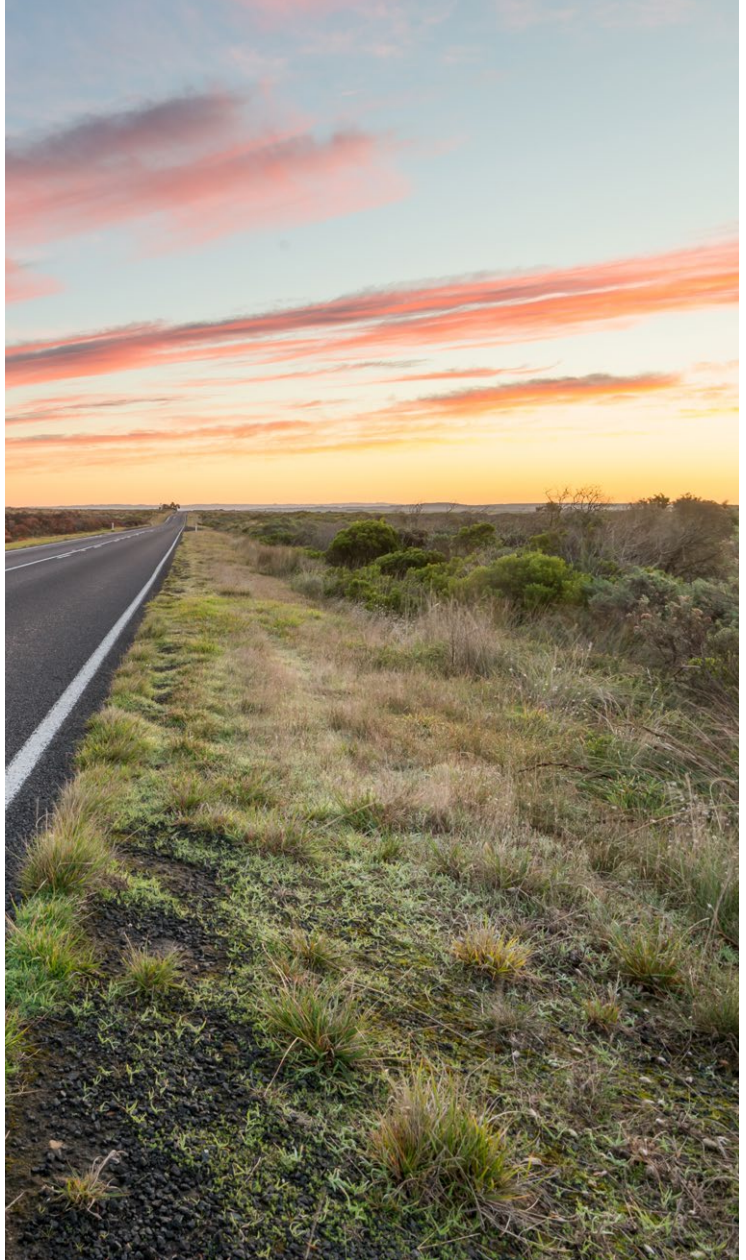
info@energysafe.vic.gov.au

www.esv.vic.gov.au



Fact Sheet

Gas Terminal Pipeline Construction



Gas Terminal Pipeline Construction

Viva Energy is a leading Australian company which supplies about a quarter of our country's fuel needs. We have a proven track record in making, importing, blending and delivering fuels, lubricants, solvents and bitumen using our extensive national and international supply chains. For motorists and truck drivers, we supply Shell and Liberty branded service stations with millions of litres of fuel every year to keep them on the road.

We are a vital part of our country's current and future energy security. The Australian economy relies on the products we supply, our experience in operating supply chains safely and reliably, and our commitment to helping Australian motorists, businesses and industries. In Victoria, our refinery at Geelong manufactures and supplies more than half of the state's fuel needs and employs more than 700 people.

To support Australia's energy future, in June 2020 we shared our vision to create the Geelong Energy Hub at our refinery. Key to this vision is the plan to develop a gas terminal using a Floating Storage and Regasification Unit (FSRU) and a pipeline to get the gas to market.

The Gas Terminal being adjacent to the Geelong Refinery would leverage our capability as an existing Major Hazard Facility (MHF) operator and offer potential synergies between the two facilities such as the ability to reuse the FSRU seawater discharge in the refinery's existing operations.

The Gas Terminal would bring natural gas from various locations in Australia and overseas, to meet the projected gas shortage in south-east Australia.

More information about Viva Energy's proposed Gas Terminal is in the Project Factsheet on the Project website.

The Project is subject to relevant regulatory and Viva Energy Board approvals.

Gas Terminal Pipeline

A new pipeline, approximately 6.5km in length and up to 600mm in diameter is proposed to take gas from the FSRU terminal to the existing Victoria Transmission System (VTS).

The Pipeline would have two sections:

- An aboveground pipeline approximately 2.5km in length, connecting the FSRU to the new nitrogen and odorant injection facilities on refinery land; and
- An underground pipeline, approximately 4km in length, which will connect to the VTS at Lara.

It is intended, as far as practicable, to locate this section of the Pipeline within, or adjacent to, existing easements or licensed road reserve areas held by Viva Energy within existing pipeline corridors.

The construction methodology for the buried section will involve the use of specialised trenching machines and will take into consideration current land uses. Trenchless construction methods will be used in more complex or environmentally sensitive areas.

Key Facts

600mm

Maximum diameter of the pipeline

~6.5km

Length of pipeline

60%+

Proportion of the pipeline buried underground (above-ground sections will be located on refinery jetty and premises)



Pipeline Construction Summary

Viva Energy will engage with landowners, occupiers and stakeholders prior to and throughout construction of the Pipeline.

Property management plans may be produced for each property and will identify aspects such as access, amenity, commercial implications and environmentally sensitive areas to be considered during the pipeline's construction and rehabilitation phases.

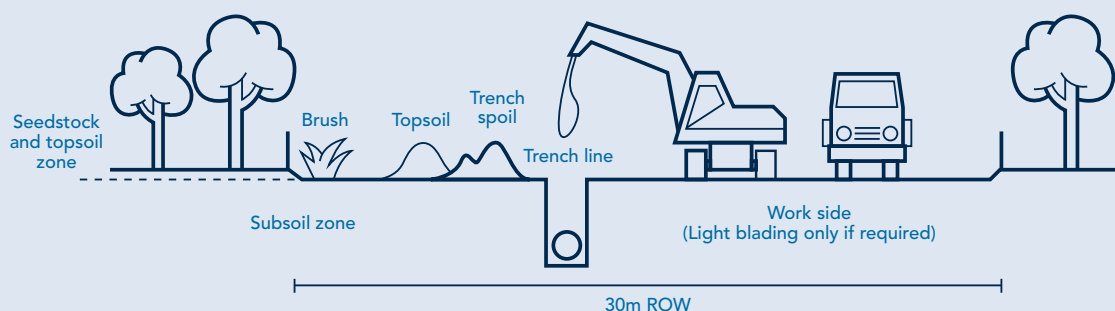
We will seek to minimise interference with activities on the land both during and after the completion of construction work.

We will rehabilitate any land on or under which a pipeline is situated as far as reasonably practicable to conditions consistent with previous use.

Rehabilitation will commence following the backfilling and compaction of the Pipeline trench (buried section).

Construction works are subject to establishing all relevant and necessary agreements with landowners and occupiers.

Construction Activities



Pipeline Construction Summary continued

A step by step summary of a typical pipeline construction process is outlined below.



Survey Activities

Field surveys need to be conducted in conjunction with desk top assessments in order to inform Pipeline design and development. Survey activities may include cultural heritage, flora/fauna, hydrology, cadastre and soil/land assessments, as well as identification of local features and services.

Land owners and occupiers will be consulted regarding these survey activities and associated requirements for land access. The Notice of Intent to Enter Land for Survey will be provided to relevant landowners and occupiers which will include a description of survey activities.



Setting up work areas

Before construction can commence, work areas must be set up appropriately. These include lay down areas for equipment, construction material stockpiles and setup areas. Work areas are established through consultation with the community and other stakeholders.

Clear and grade

Clear and grade involves preparing the pipeline easement for construction and setting aside the extra work space as agreed with landowners and occupiers. The combined easement and extra work space is commonly referred to as the construction right-of-way.

Right-of-way

The construction right-of-way is established and will be clearly identified and fenced off where required. Typically, the right-of-way can be between 25-30m in width.

Trenching

A specialised rotary trenching machine or excavator is used to dig the trenches along the pipeline route. Any material removed is placed on the side of the trench (stockpiled), within the construction set up area.

Potential impacts associated with this activity, such as hours of operation, dust and noise management, will be discussed with affected landowners and occupiers prior to commencement of the works.

Trenchless construction

Trenchless construction is used in more complex or environmentally sensitive areas. Specialist operators drill a hole beneath the surface at a shallow angle and then pull a welded length of pipe through the hole without disturbing the surface.

These operations are carefully planned and highly engineered and are undertaken to minimise disturbance to properties and roads in environmentally sensitive areas, or to address construction issues.

Pipe tracks

Pipe tracks will be used to support the above ground sections of the pipeline located on the jetty and within the refinery. Pipe tracks are a series of unconnected low beams designed to support pipes at grade

Welding

Once the pipe lengths have been laid out or 'strung' along the construction set up area, qualified welders join the lengths of pipes together. Welds are inspected using x-ray or ultrasonic equipment to ensure their quality and are then coated to reduce the likelihood of corrosion.

Lowering in

After final quality assurance checks, each completed pipe section is lowered into the trench using specialist side-boom tractors and excavators.

Backfill (buried section only)

When the buried section of the pipe is in place, trenches are backfilled with suitable material (padding) to protect the pipeline coating from stones or other sharp objects. The topsoil is then re-instated over the disturbed trench area to the contour of the land so that pasture or other groundcover can be rehabilitated.

Quality assurance

Rigorous quality assurance, inspection and testing occurs during and after the installation to confirm that the pipeline integrity meets or exceeds the design criteria. Using water, the pipe is pressure tested (hydrotested) to ensure it is fit for operational service.

Pipeline Operation and Land Rehabilitation

Commissioning and operation

Prior to commissioning and operation of the Pipeline, consent is required from the Minister administering the *Pipelines Act 2005* and as relevant, *ESV*. The pipeline must comply with the requirements of the *Pipelines Act 2005* and *Pipelines Regulations 2017* and the Environmental Management Plan and Safety Management Plan must be approved by the Minister administering the *Pipelines Act 2005* and *Energy Safe Victoria* respectively.

Easement and property rehabilitation

Disturbed land will be reinstated as far as practicable to its previous state and use and this may include re-contouring to match existing landforms. Topsoil conserved during the construction process is re-spread over areas used for construction. Rehabilitation is undertaken in accordance with previously agreed property management plans and in line with established industry practice/standards.

Signs are placed at regular intervals and within line-of-sight to one another to indicate the presence of a buried pipeline.



If you have any questions about the proposed Pipeline or the Project, please contact Viva Energy's Project Team

1800 515 093
energyhub@vivaenergy.com.au
vivaenergy.com.au

Alternate sources of information

Department of Environment, Land, Water, and Planning

0439 799 598

pipeline.regulation@delwp.vic.gov.au

www.energy.vic.gov.au

Energy Safe Victoria

1800 800 158

info@energysafe.vic.gov.au

www.esv.vic.gov.au

