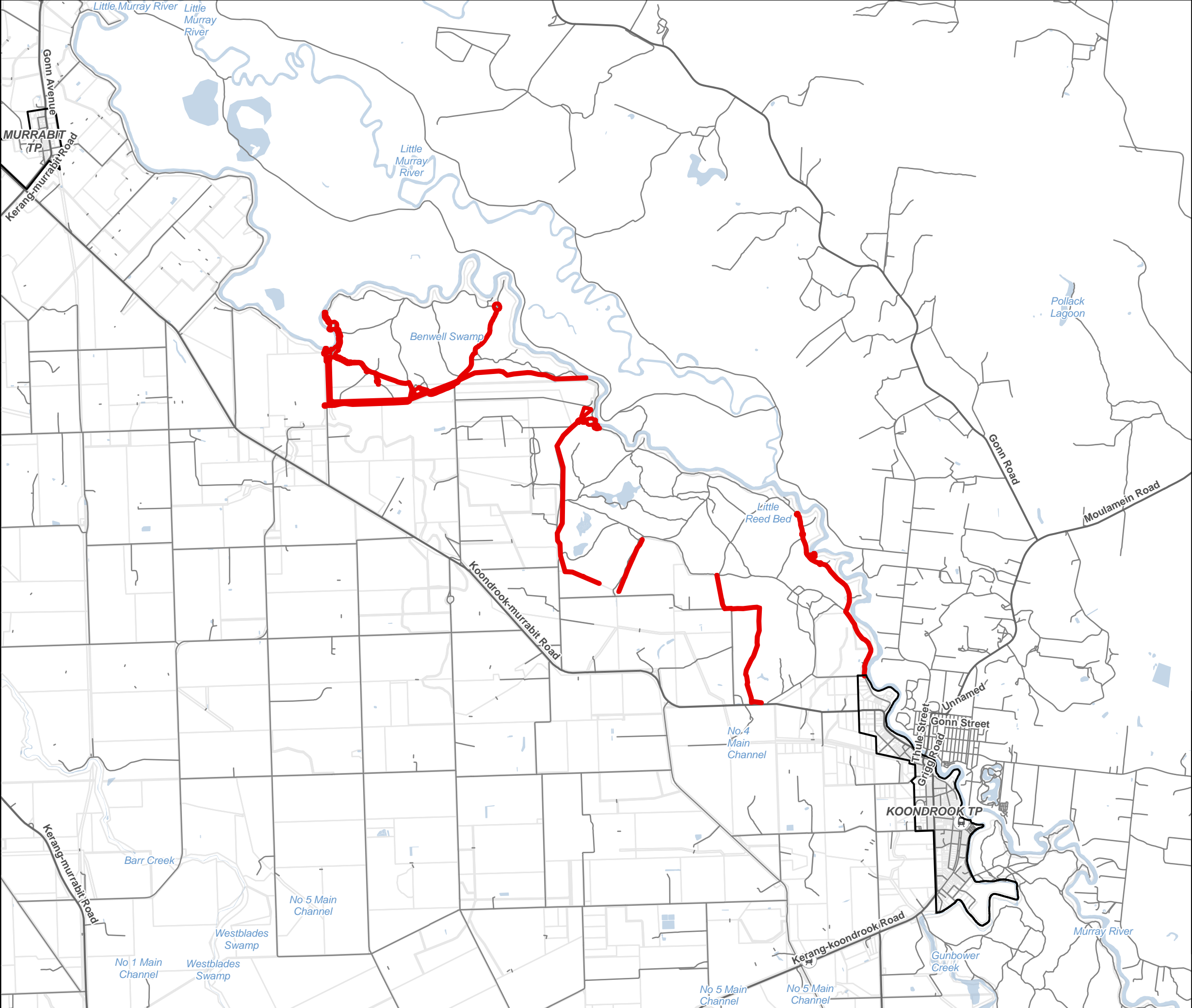


Attachment 1 – Project Overview Maps

Map 1 – Project location map

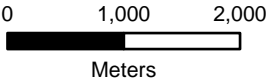
Map 2 – Project structures, construction and access

Map 3 – Managed inundation area



Legend

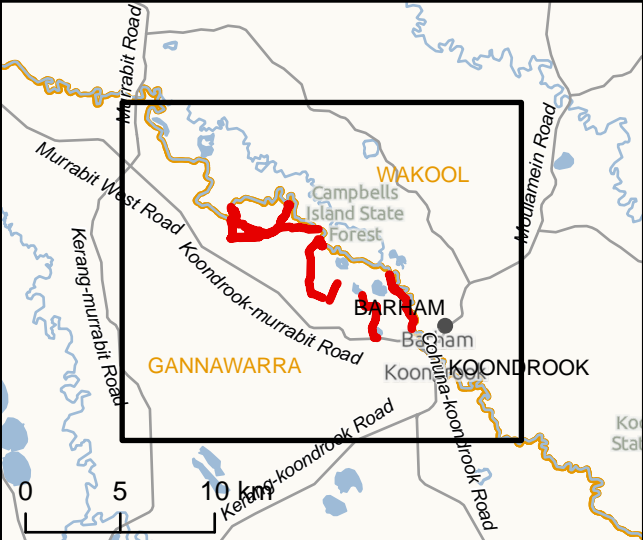
- Area of Investigation
- Rail Station
- Major Road
- Minor Road
- Waterbody
- Cadastre
- Townships



IS297705

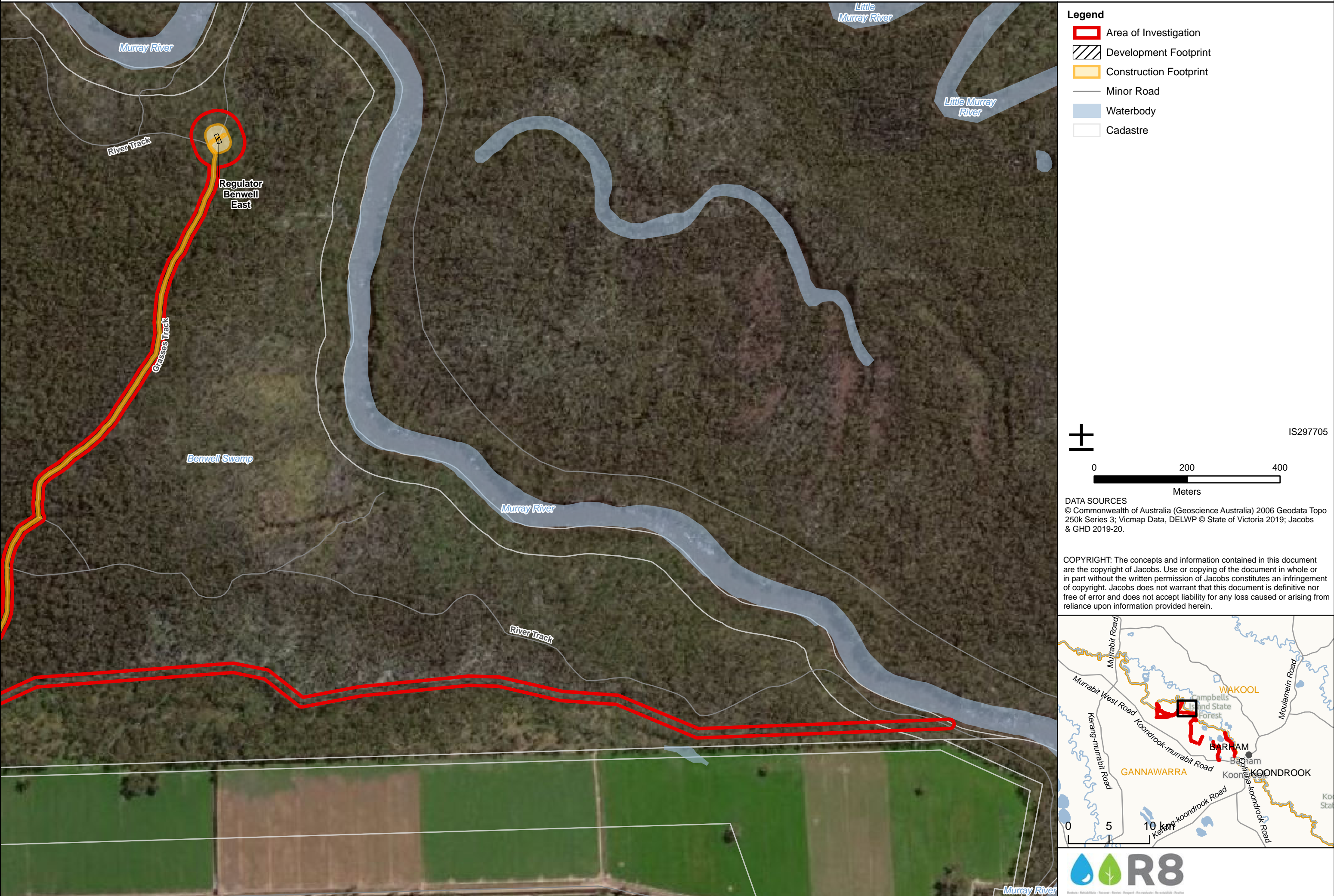
DATA SOURCES
© Commonwealth of Australia (Geoscience Australia) 2006 Geodata Topo 250k Series 3; Vicmap Data, DELWP © State of Victoria 2019; Jacobs & GHD 2019-20.

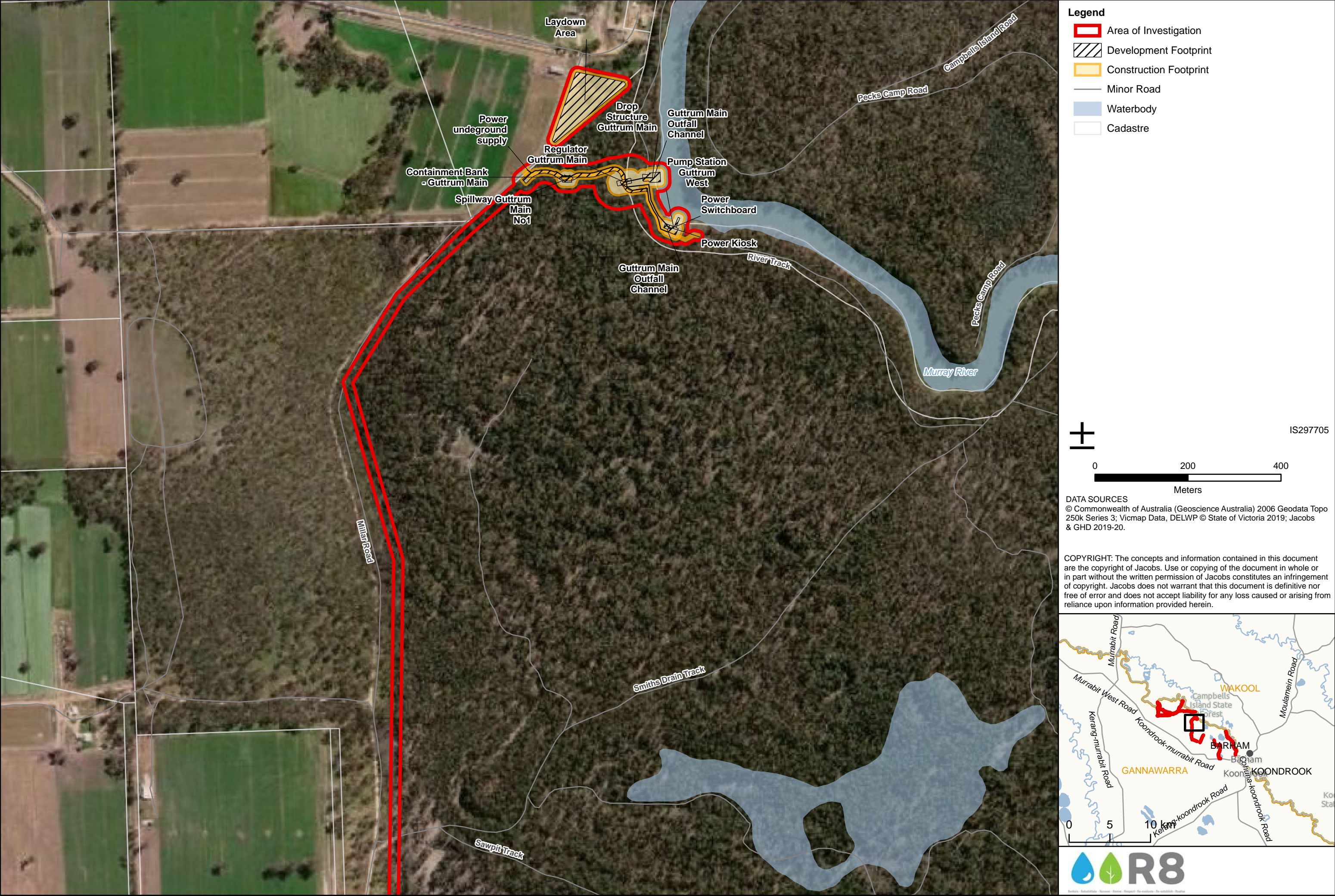
COPYRIGHT: The concepts and information contained in this document are the copyright of Jacobs. Use or copying of the document in whole or in part without the written permission of Jacobs constitutes an infringement of copyright. Jacobs does not warrant that this document is definitive nor free of error and does not accept liability for any loss caused or arising from reliance upon information provided herein.



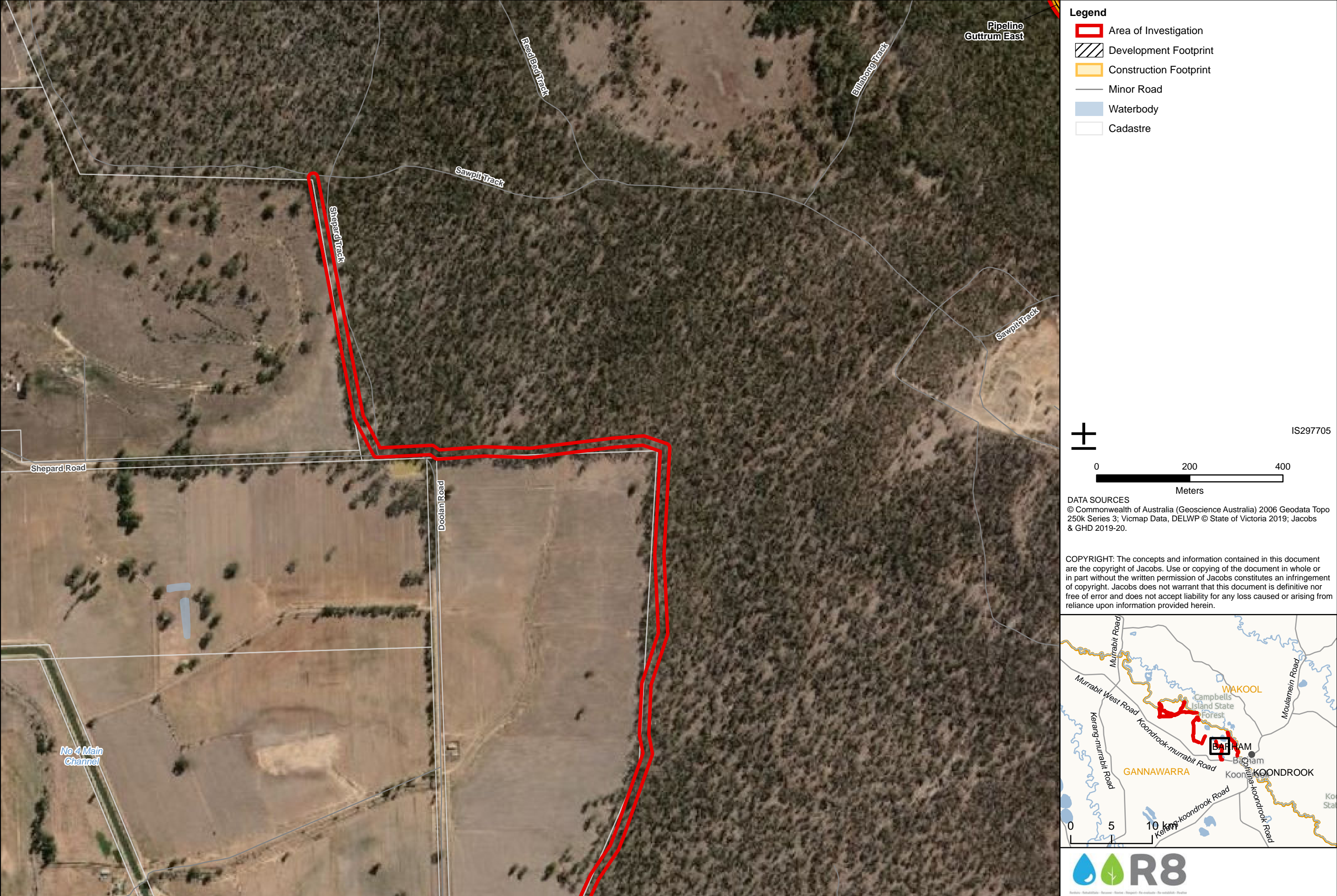


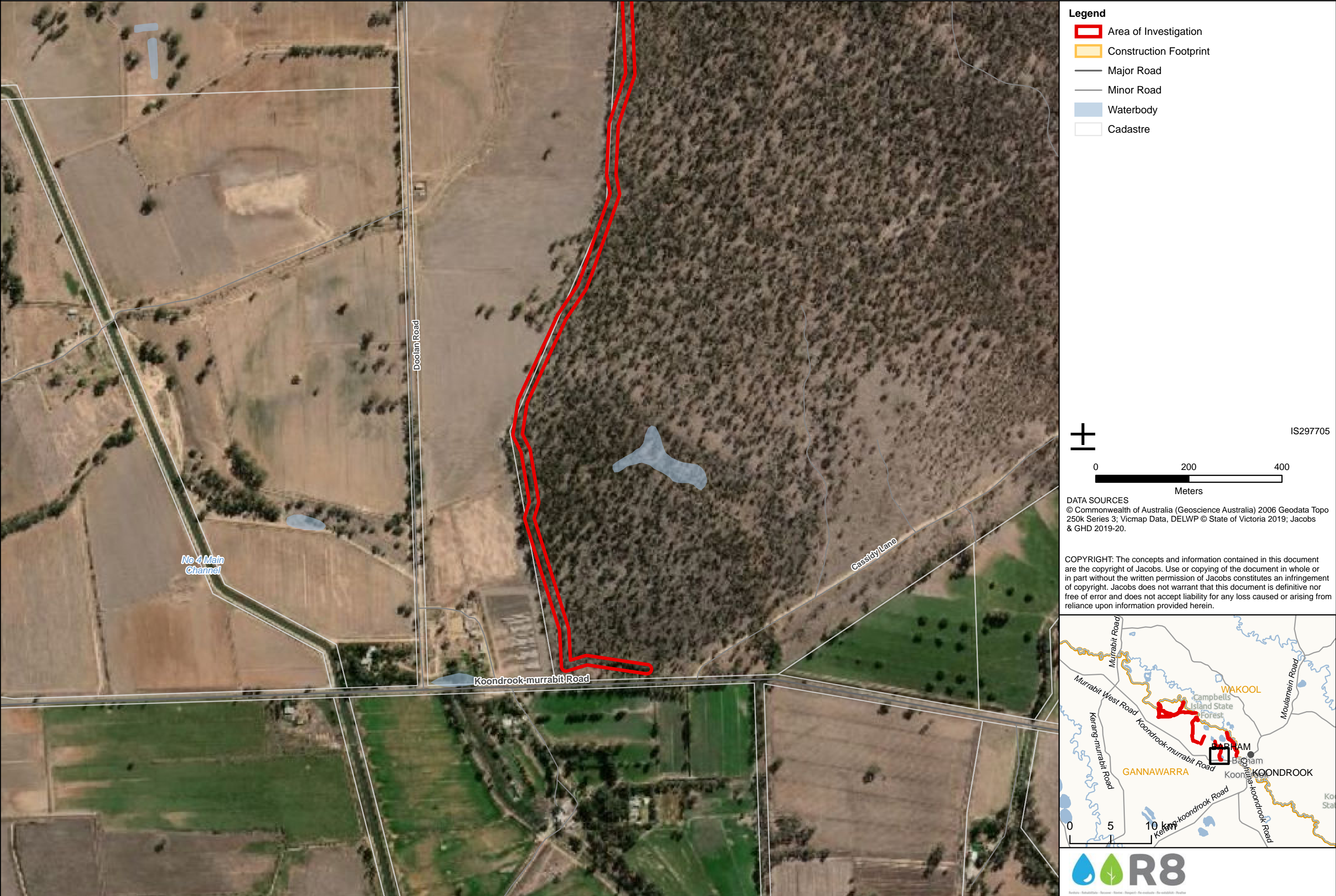


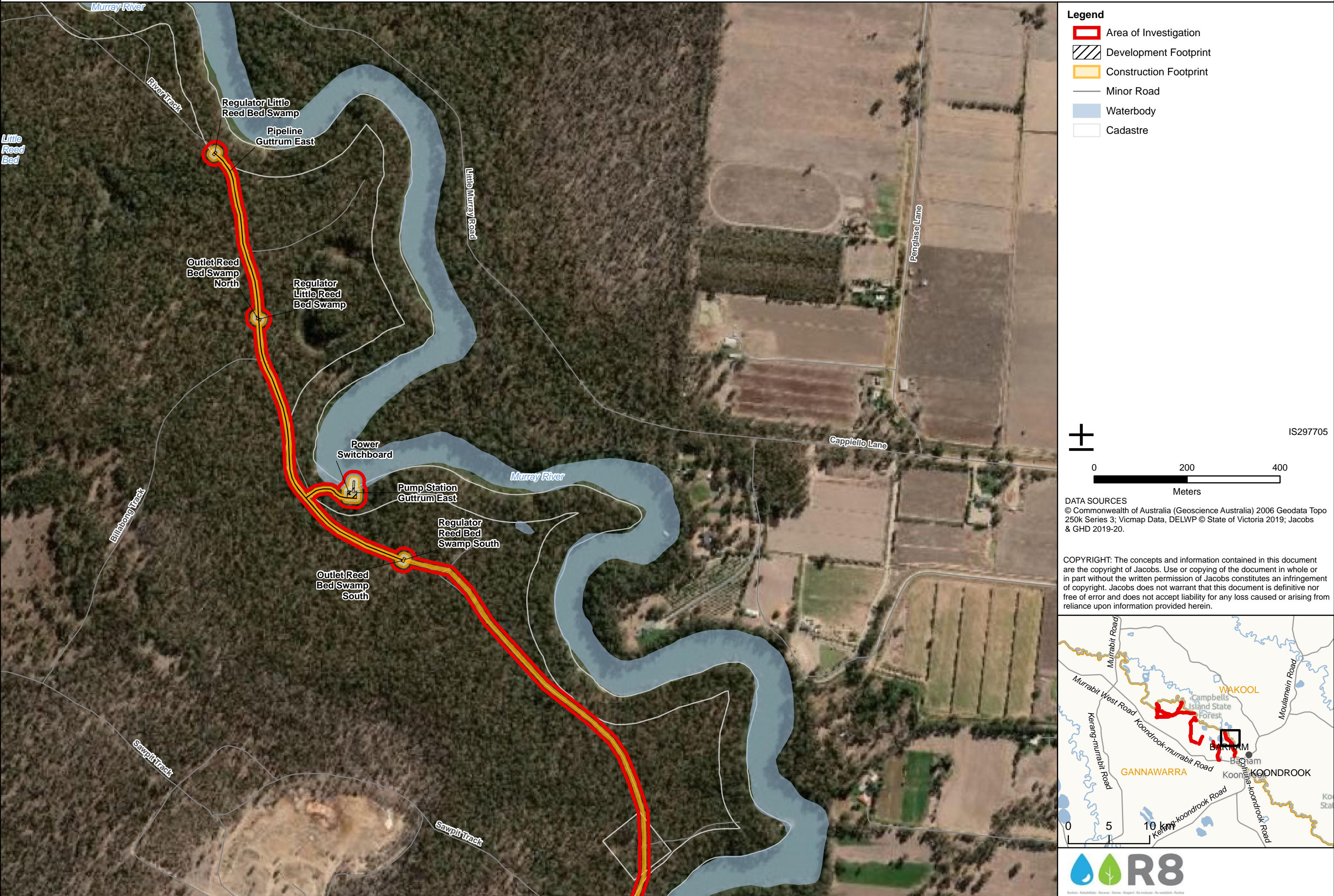


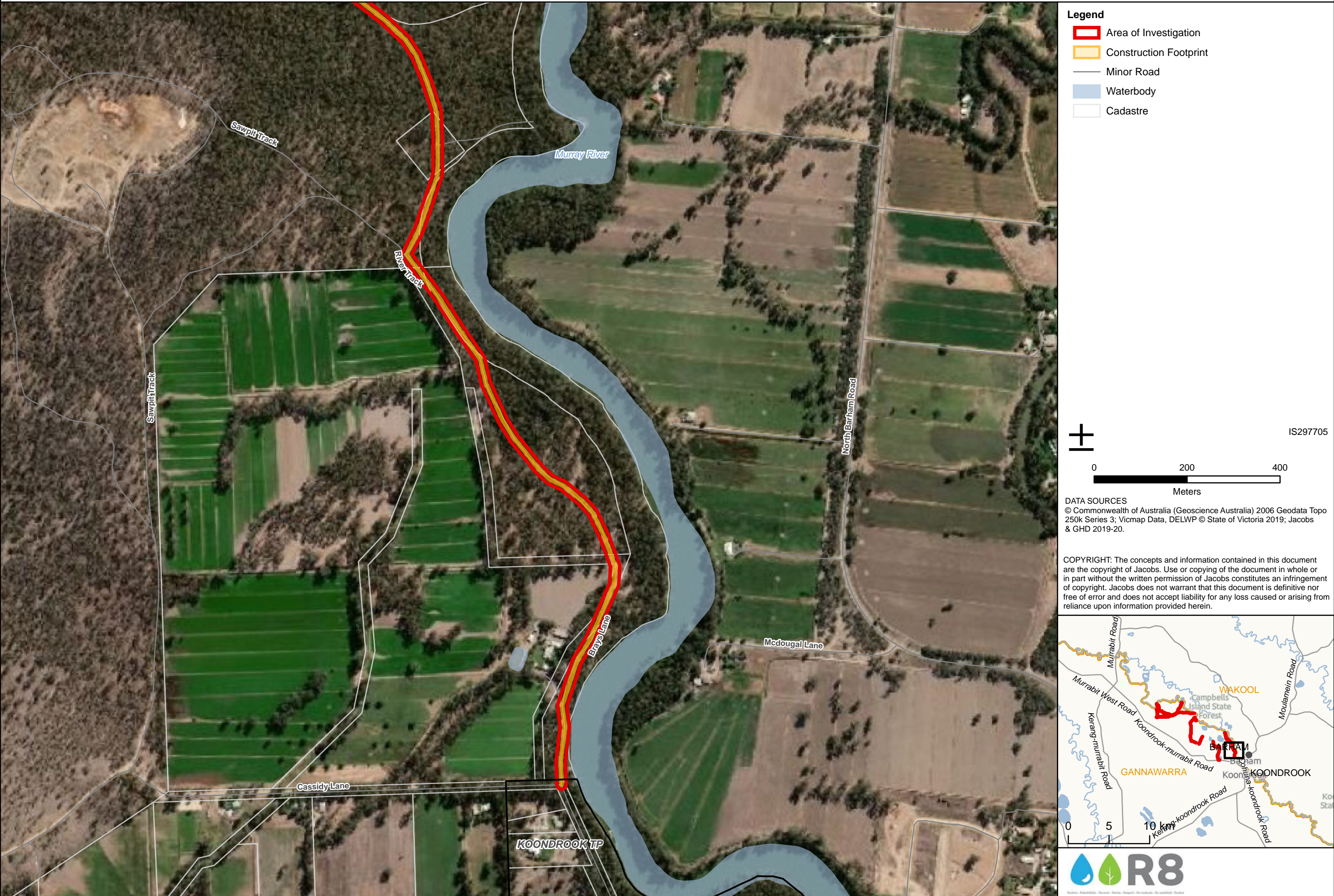


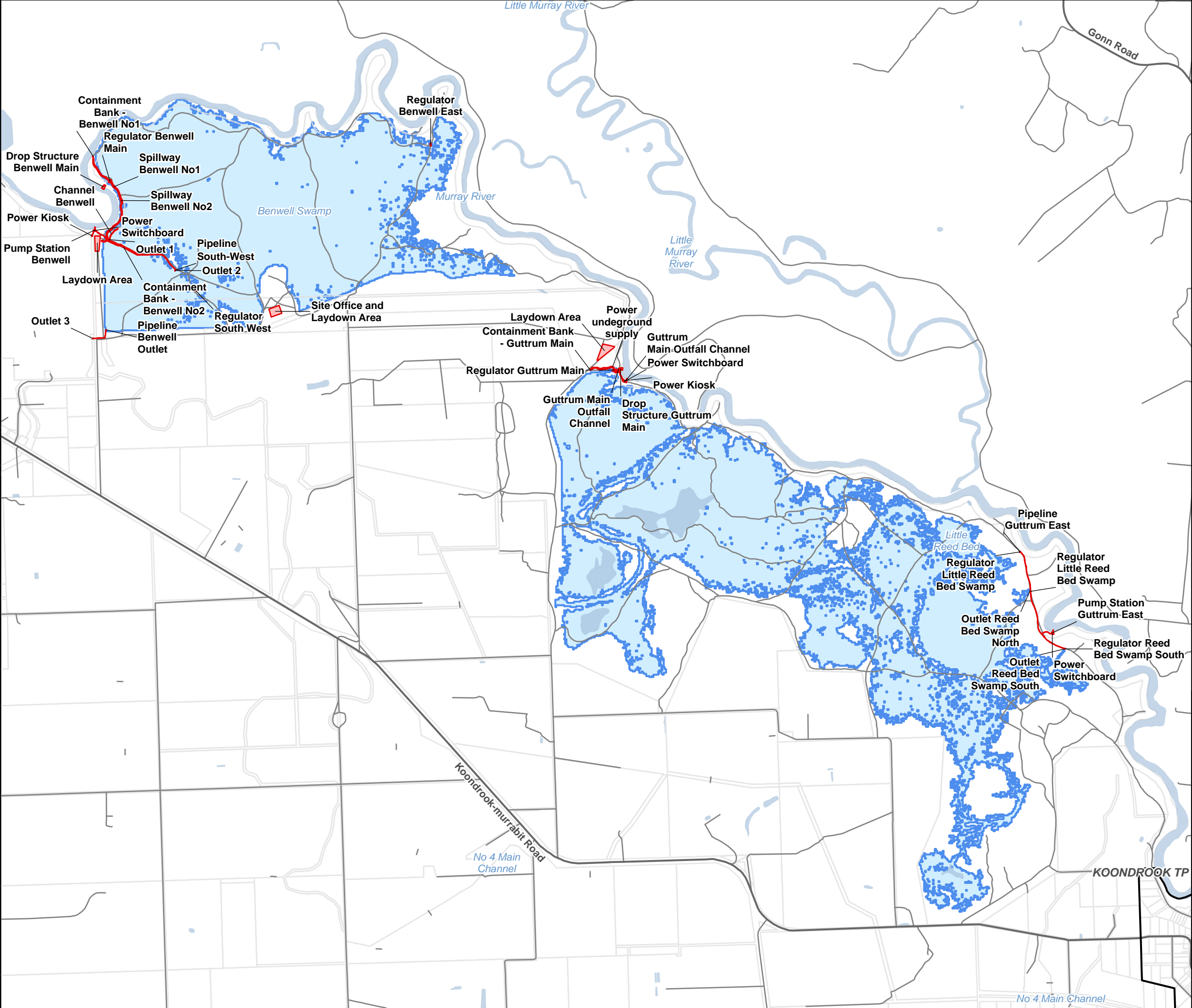




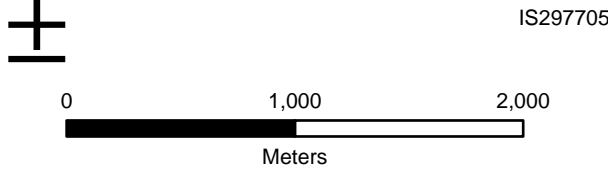








- Legend**
- Proposed Structures
 - Inundation Area
 - Major Road
 - Minor Road
 - Waterbody
 - Cadastrate
 - Townships



DATA SOURCES
© Commonwealth of Australia (Geoscience Australia) 2006 Geodata Topo 250k Series 3; Vicmap Data, DELWP © State of Victoria 2019; Jacobs & GHD 2019-20.

COPYRIGHT: The concepts and information contained in this document are the copyright of Jacobs. Use or copying of the document in whole or in part without the written permission of Jacobs constitutes an infringement of copyright. Jacobs does not warrant that this document is definitive nor free of error and does not accept liability for any loss caused or arising from reliance upon information provided herein.

