



Tottanhan TO Albury

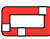

Ecological Habitat Map

0 75 150 m

Coordinate System: GDA 1994 MGA Zone 55

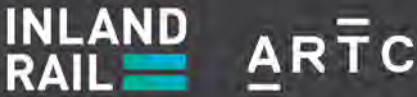
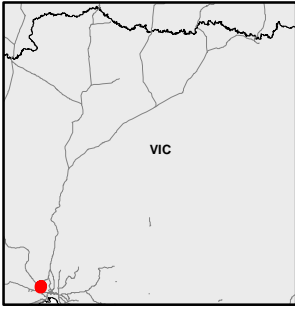
ARTC makes no representation or warranty and assumes no duty of care or other responsibility to any party as to the completeness, accuracy or suitability of the information contained in this GIS map. The GIS map has been prepared from material provided to ARTC by an external source and ARTC has not taken any steps to verify the completeness, accuracy or suitability of that material. ARTC will not be responsible for any loss or damage suffered as a result of any person whatsoever placing reliance upon the information contained within this GIS map.

Date: 16-Sep-19 Paper: A3
Author: JC Scale: 1:4,000
Data Sources: ARTC, VicMap, DataVIC

 Project Area
 Investigation Area (2018, 2019)

Threatened Fauna Habitat
 Golden Sun Moth and Striped Legless Lizard

Threatened Flora Habitat



The Australian Government is delivering Inland Rail through the Australian Rail Track Corporation (ARTC), in partnership with the private sector.



0 60 120 m
Coordinate System: GDA 1994 MGA Zone 55
ARTC makes no representation or warranty and assumes no duty of care or other responsibility to any party as to the completeness, accuracy or suitability of the information contained in this GIS map. The GIS map has been prepared from material provided to ARTC by an external source and ARTC has not taken any steps to verify the completeness, accuracy or suitability of that material. ARTC will not be responsible for any loss or damage suffered as a result of any person whatsoever placing reliance upon the information contained within this GIS map.
Date: 16-Sep-19 Paper: A3
Author: JC Scale: 1:3,200
Data Sources: ARTC, VicMap, DataVIC

Project Area
 Investigation Area (2018, 2019)

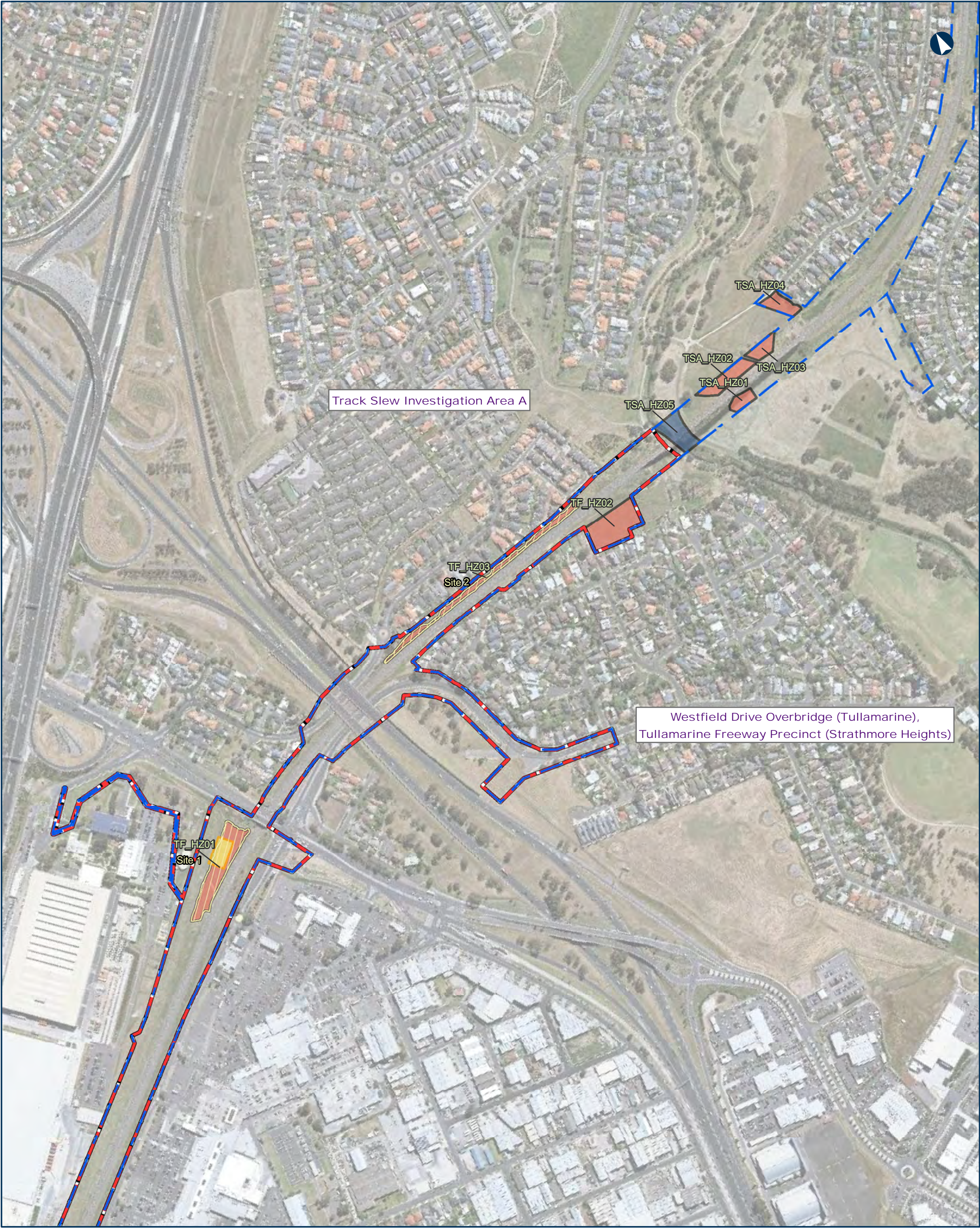
Threatened Fauna Habitat
 Growling Grass Frog
Golden Sun Moth,
Striped Legless Lizard, Growling Grass Frog
 Striped Legless Lizard
Tile Survey (2017)

Threatened Flora Habitat



INLAND RAIL **ARTC**

The Australian Government is delivering Inland Rail through the Australian Rail Track Corporation (ARTC), in partnership with the private sector.



Tottenham TO Albury

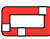

Ecological Habitat Map

0 100 200 m





Coordinate System: GDA 1994 MGA Zone 55

ARTC makes no representation or warranty and assumes no duty of care or other responsibility to any party as to the completeness, accuracy or suitability of the information contained in this GIS map. The GIS map has been prepared from material provided to ARTC by an external source and ARTC has not taken any steps to verify the completeness, accuracy or suitability of that material. ARTC will not be responsible for any loss or damage suffered as a result of any person whatsoever placing reliance upon the information contained within this GIS map.

Date: 16-Sep-19 Paper: A3
Author: JC Scale: 1:5,500
Data Sources: ARTC, VicMap, DataVIC

 Project Area
 Investigation Area (2018, 2019)

Threatened Fauna Habitat

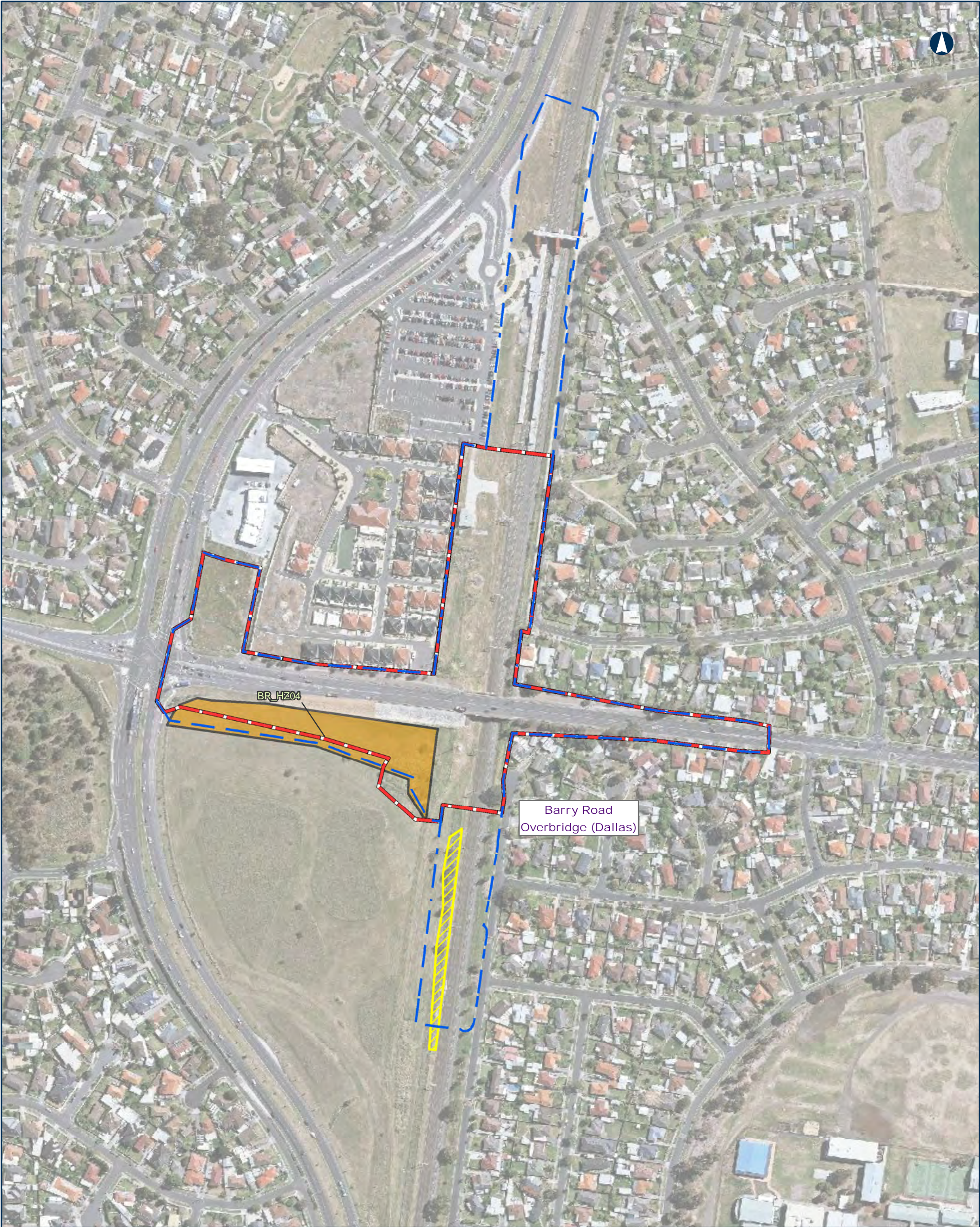
-  Growing Grass Frog
-  Golden Sun Moth
-  Golden Sun Moth Targeted Survey Site
-  Striped Legless Lizard Tile Survey (2017)

Threatened Flora Habitat



INLAND RAIL **ARTC**

The Australian Government is delivering Inland Rail through the Australian Rail Track Corporation (ARTC), in partnership with the private sector.



Tottenhan TO Albury

Ecological Habitat Map

MAP 4 OF 16

0 50 100 m

Coordinate System: GDA 1994 MGA Zone 55

ARTC makes no representation or warranty and assumes no duty of care or other responsibility to any party as to the completeness, accuracy or suitability of the information contained in this GIS map. The GIS map has been prepared from material provided to ARTC by an external source and ARTC has not taken any steps to verify the completeness, accuracy or suitability of that material. ARTC will not be responsible for any loss or damage suffered as a result of any person whatsoever placing reliance upon the information contained within this GIS map.

Date: 16-Sep-19

Author: JC

Data Sources: ARTC, VicMap, DataVIC

Paper: A3

Scale: 1:3,000

Project Area

Investigation Area (2018, 2019)

Threatened Fauna Habitat

Golden Sun Moth and Striped Legless Lizard

Threatened Flora Habitat

Large-flowered crane's-bill

VIC

INLAND RAIL

ARTC

The Australian Government is delivering Inland Rail through the Australian Rail Track Corporation (ARTC), in partnership with the private sector.

O:\G&I\GIS\SET757\70 percent deliverable\T2A_VIC\Documents\Maps\MXD\ARTC_IR_T2A_Ecology\Habitat_MAP2.mxd



Tottenham TO Albury

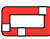

Ecological Habitat Map

0 50 100
m

Coordinate System: GDA 1994 MGA Zone 55

ARTC makes no representation or warranty and assumes no duty of care or other responsibility to any party as to the completeness, accuracy or suitability of the information contained in this GIS map. The GIS map has been prepared from material provided to ARTC by an external source and ARTC has not taken any steps to verify the completeness, accuracy or suitability of that material. ARTC will not be responsible for any loss or damage suffered as a result of any person whatsoever placing reliance upon the information contained within this GIS map.


Date: 16-Sep-19 Paper: A3
Author: JC Scale: 1:3,000
Data Sources: ARTC, VicMap, DataVIC

 Project Area
 Investigation Area
(2018, 2019)

Threatened Fauna Habitat

 Golden Sun Moth, Striped Legless Lizard, Growling Grass Frog

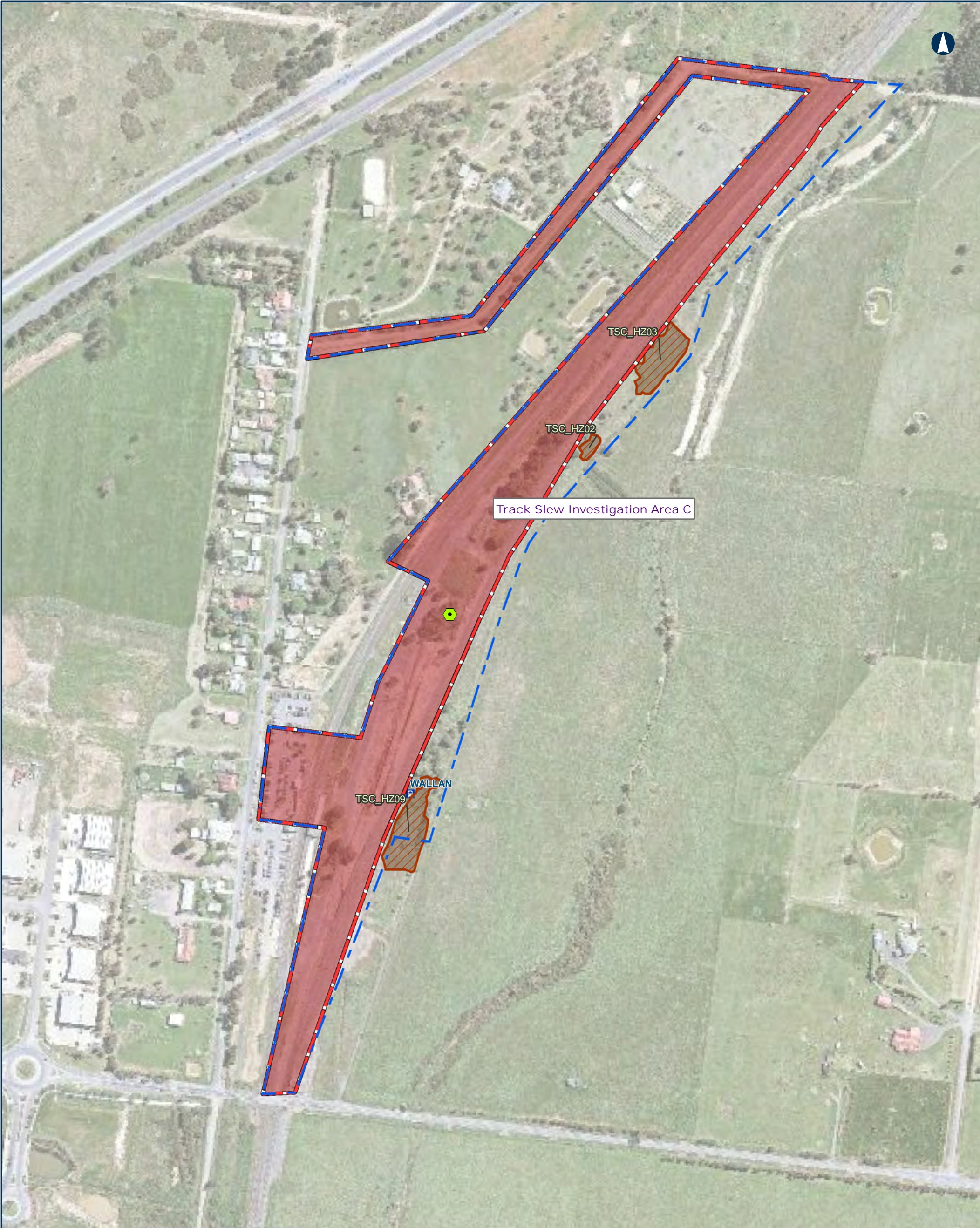
Threatened Flora Habitat

 Matted Flax-lily and Large-flowered crane's-bill



INLAND RAIL **ARTC**

The Australian Government is delivering Inland Rail through the Australian Rail Track Corporation (ARTC), in partnership with the private sector.



0 60 120
m

Coordinate System: GDA 1994 MGA Zone 55

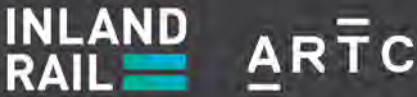
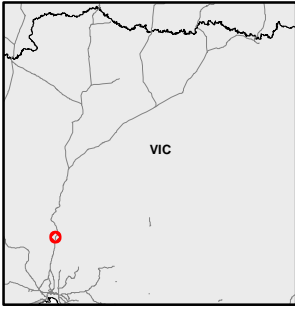
ARTC makes no representation or warranty and assumes no duty of care or other responsibility to any party as to the completeness, accuracy or suitability of the information contained in this GIS map. The GIS map has been prepared from material provided to ARTC by an external source and ARTC has not taken any steps to verify the completeness, accuracy or suitability of that material. ARTC will not be responsible for any loss or damage suffered as a result of any person whatsoever placing reliance upon the information contained within this GIS map.

Date: 16-Sep-19 Paper: A3
Author: JC Scale: 1:3,500
Data Sources: ARTC, VicMap, DataVIC

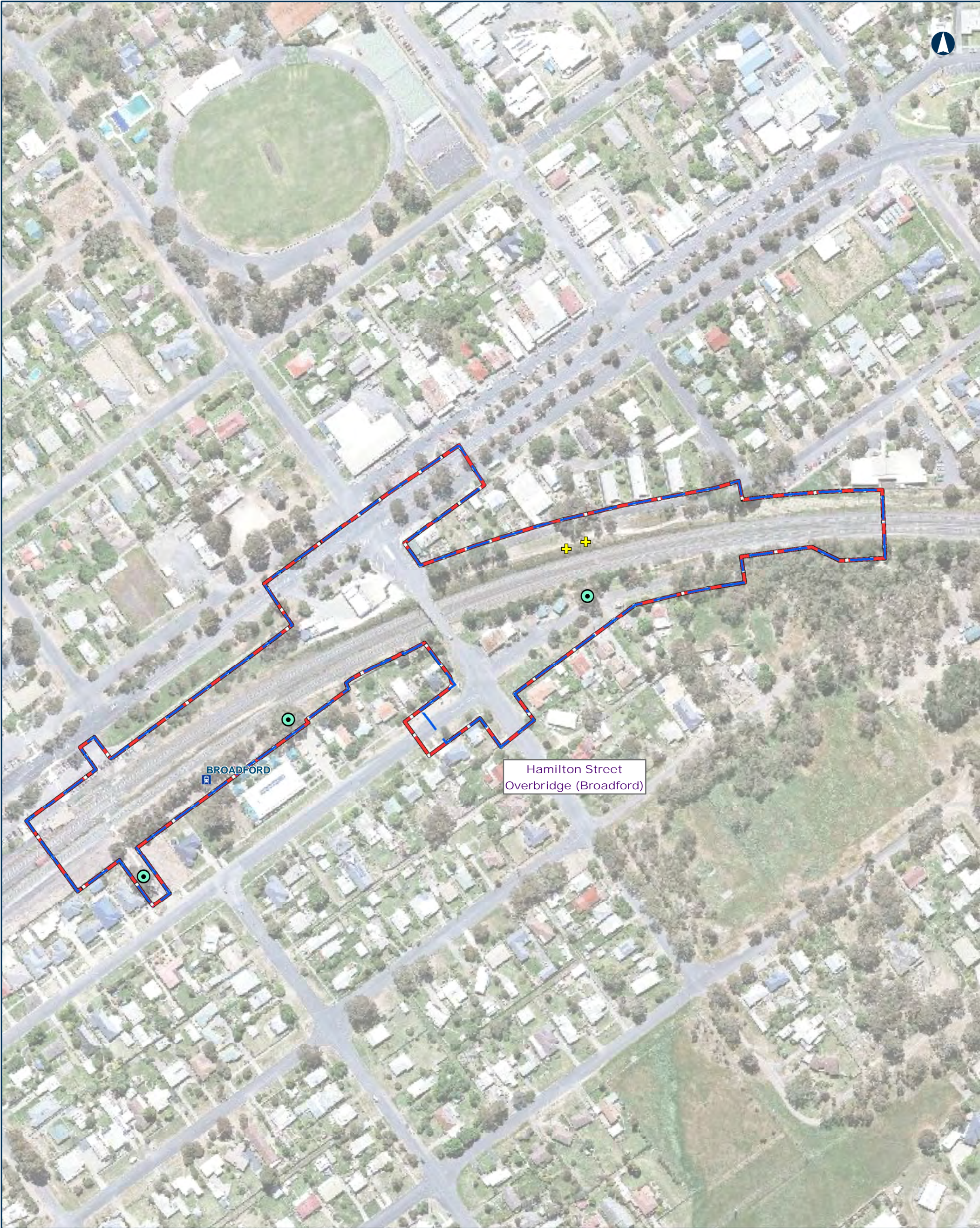
- Project Area
- Investigation Area (2018, 2019)
- Track Slew Impact Area

- Threatened Fauna Habitat**
- Golden Sun Moth, Striped Legless Lizard, Growling Grass Frog
 - Mature Tree and Hollow-Bearing

- Threatened Flora Habitat**
- Matted Flax-lily, Swamp Everlasting and Swamp Fireweed



The Australian Government is delivering Inland Rail through the Australian Rail Track Corporation (ARTC), in partnership with the private sector.



0 40 80
m

Coordinate System: GDA 1994 MGA Zone 55

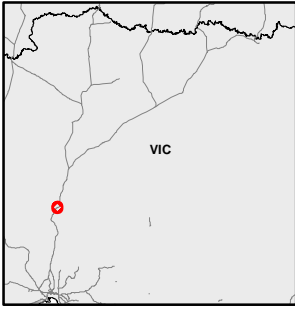
ARTC makes no representation or warranty and assumes no duty of care or other responsibility to any party as to the completeness, accuracy or suitability of the information contained in this GIS map. The GIS map has been prepared from material provided to ARTC by an external source and ARTC has not taken any steps to verify the completeness, accuracy or suitability of that material. ARTC will not be responsible for any loss or damage suffered as a result of any person whatsoever placing reliance upon the information contained within this GIS map.

Date: 16-Sep-19 Paper: A3
Author: JC Scale: 1:2,500
Data Sources: ARTC, VicMap, DataVIC

Project Area
 Investigation Area
(2018, 2019)

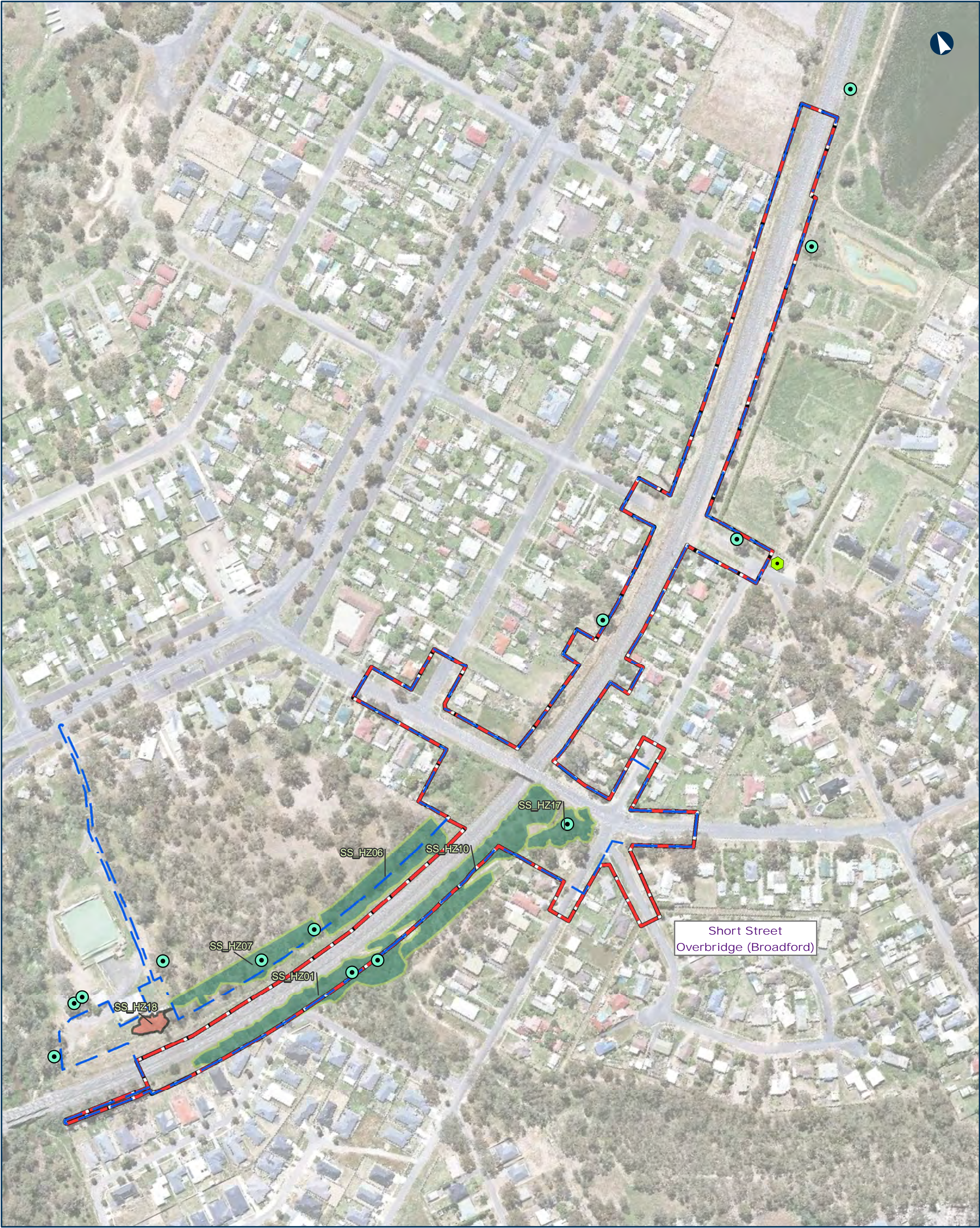
Threatened Fauna
Habitat
 Mature Tree

Threatened Flora
Habitat
 Orchid Species



INLAND RAIL ARTC

The Australian Government is delivering Inland Rail through the Australian Rail Track Corporation (ARTC), in partnership with the private sector.



Tottenhan TO Albury

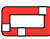

Ecological Habitat Map

0 50 100
m





Coordinate System: GDA 1994 MGA Zone 55

ARTC makes no representation or warranty and assumes no duty of care or other responsibility to any party as to the completeness, accuracy or suitability of the information contained in this GIS map. The GIS map has been prepared from material provided to ARTC by an external source and ARTC has not taken any steps to verify the completeness, accuracy or suitability of that material. ARTC will not be responsible for any loss or damage suffered as a result of any person whatsoever placing reliance upon the information contained within this GIS map.

Date: 16-Sep-19 Paper: A3
Author: JC Scale: 1:3,000
Data Sources: ARTC, VicMap, DataVIC

 Project Area
 Investigation Area
(2018, 2019)

Threatened Fauna Habitat

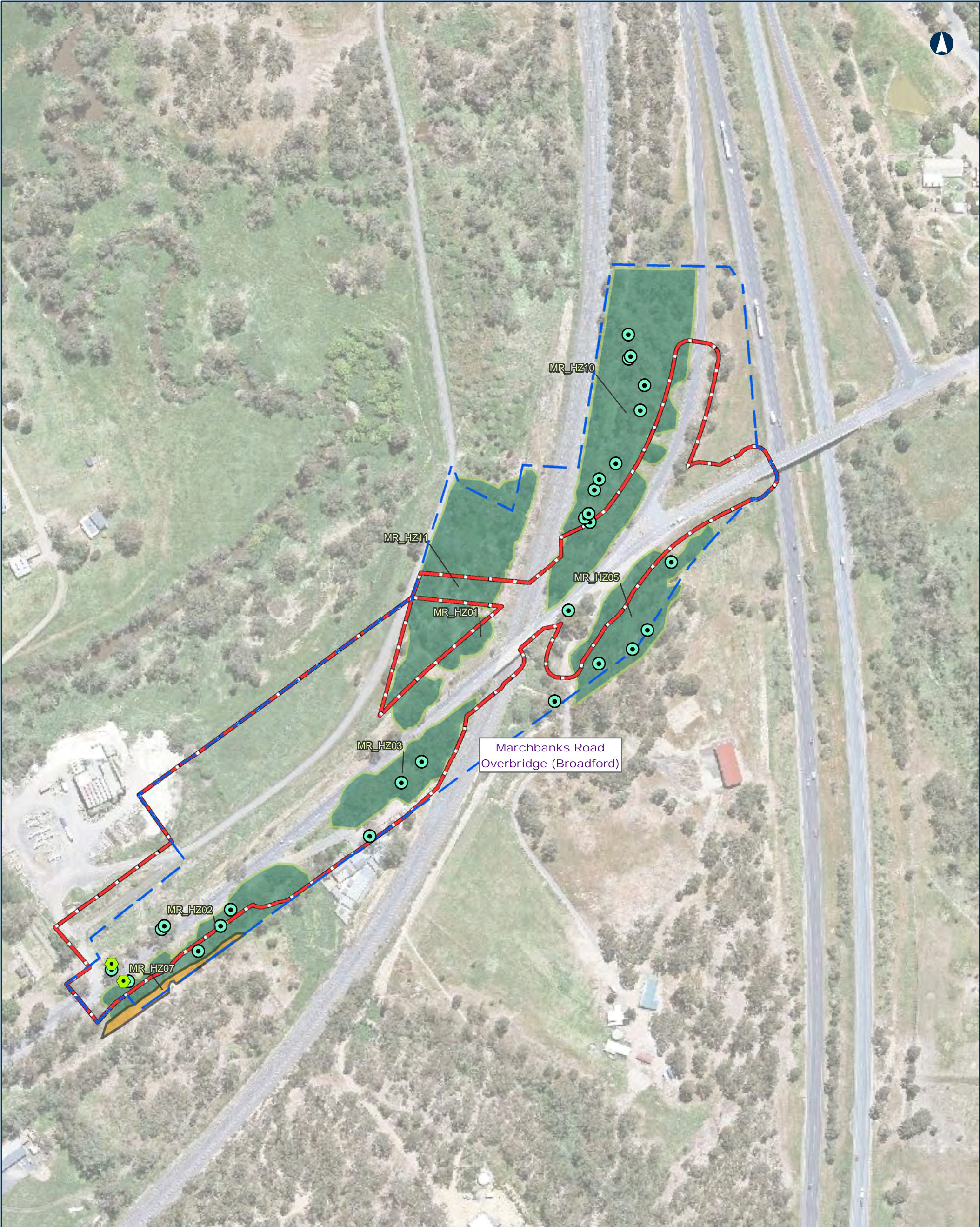
-  Golden Sun Moth
-  Woodland Bird Habitat
-  Mature Tree
-  Mature Tree and Hollow-Bearing

Threatened Flora Habitat



INLAND RAIL **ARTC**

The Australian Government is delivering Inland Rail through the Australian Rail Track Corporation (ARTC), in partnership with the private sector.



0 40 80
m

Coordinate System: GDA 1994 MGA Zone 55

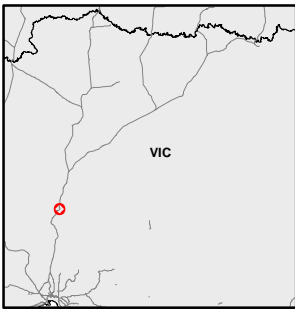
ARTC makes no representation or warranty and assumes no duty of care or other responsibility to any party as to the completeness, accuracy or suitability of the information contained in this GIS map. The GIS map has been prepared from material provided to ARTC by an external source and ARTC has not taken any steps to verify the completeness, accuracy or suitability of that material. ARTC will not be responsible for any loss or damage suffered as a result of any person whatsoever placing reliance upon the information contained within this GIS map.

Date: 16-Sep-19 Paper: A3
Author: JC Scale: 1:2,500
Data Sources: ARTC, VicMap, DataVIC

Project Area
 Investigation Area
(2018, 2019)

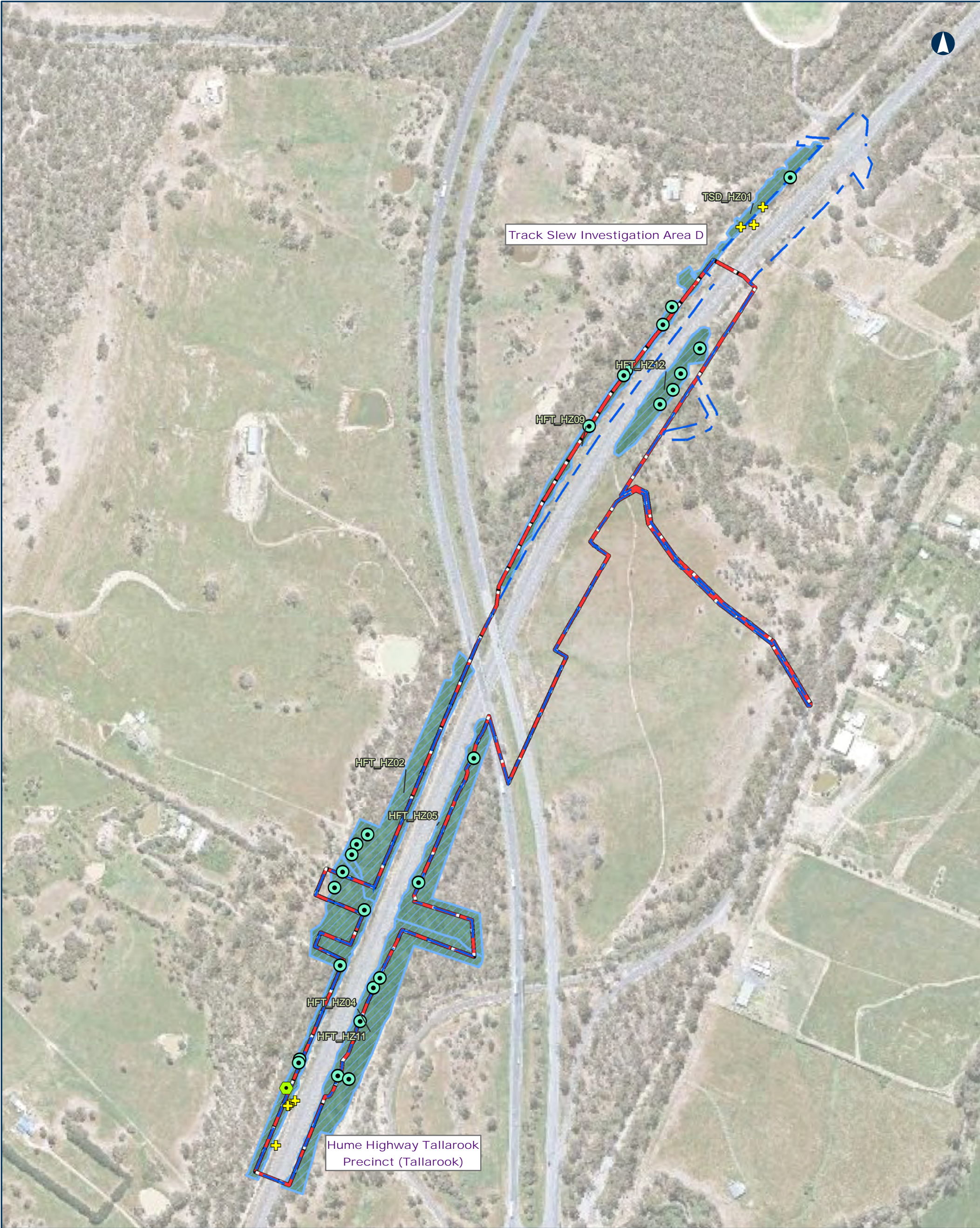
- Threatened Fauna Habitat**
- Golden Sun Moth and Striped Legless Lizard
 - Woodland Bird Habitat
 - Mature Tree
 - Mature Tree and Hollow-Bearing

Threatened Flora Habitat



INLAND RAIL **ARTC**

The Australian Government is delivering Inland Rail through the Australian Rail Track Corporation (ARTC), in partnership with the private sector.



Tottenham TO Albury

Ecological Habitat Map

MAP 10 OF 16

0 75 150
m

Coordinate System: GDA 1994 MGA Zone 55

ARTC makes no representation or warranty and assumes no duty of care or other responsibility to any party as to the completeness, accuracy or suitability of the information contained in this GIS map. The GIS map has been prepared from material provided to ARTC by an external source and ARTC has not taken any steps to verify the completeness, accuracy or suitability of that material. ARTC will not be responsible for any loss or damage suffered as a result of any person whatsoever placing reliance upon the information contained within this GIS map.

Date: 16-Sep-19
Author: JC
Data Sources: ARTC, VicMap, DataVIC

Project Area
 Investigation Area
(2018, 2019)

Threatened Fauna Habitat

- Woodland Bird Habitat
- Brush-tailed phascogale and squirrel glider
- Mature Tree
- Mature Tree and Hollow-Bearing

Threatened Flora Habitat

- Orchid Species



INLAND RAIL **ARTC**

The Australian Government is delivering Inland Rail through the Australian Rail Track Corporation (ARTC), in partnership with the private sector.



Tottenhan TO Albury

Ecological Habitat Map

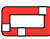

MAP 11 OF 16

0 70 140
m

Coordinate System: GDA 1994 MGA Zone 55

ARTC makes no representation or warranty and assumes no duty of care or other responsibility to any party as to the completeness, accuracy or suitability of the information contained in this GIS map. The GIS map has been prepared from material provided to ARTC by an external source and ARTC has not taken any steps to verify the completeness, accuracy or suitability of that material. ARTC will not be responsible for any loss or damage suffered as a result of any person whatsoever placing reliance upon the information contained within this GIS map.

Date: 16-Sep-19 Paper: A3
Author: JC Scale: 1:3,800
Data Sources: ARTC, VicMap, DataVIC

 Project Area
 Investigation Area (2018, 2019)

Threatened Fauna Habitat

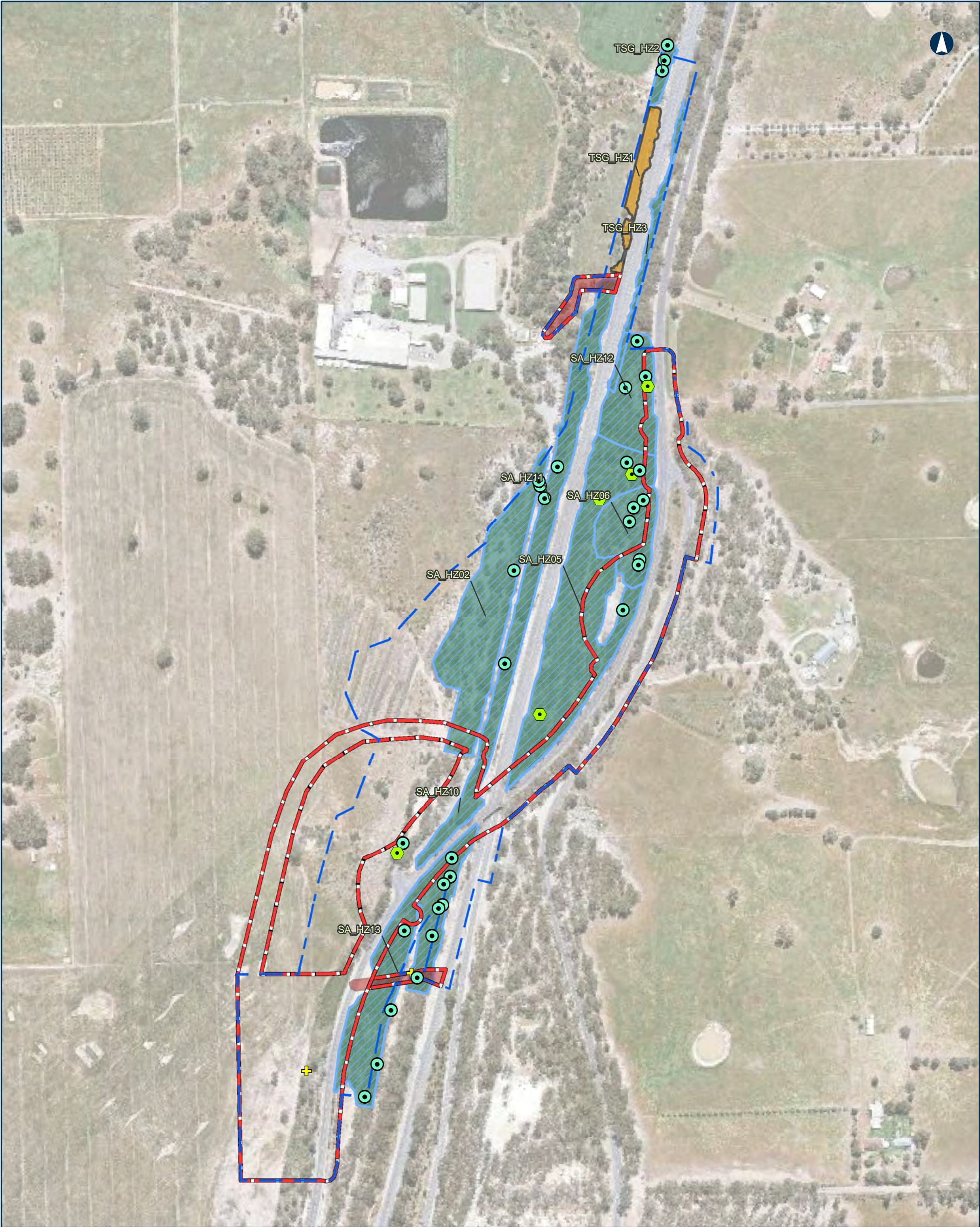
-  Woodland Bird Habitat
-  Brush-tailed phascogale and squirrel glider
-  Sugar Gum Raptor Nest
-  Mature Tree
-  Mature Tree and Hollow-Bearing

Threatened Flora Habitat



INLAND RAIL **ARTC**

The Australian Government is delivering Inland Rail through the Australian Rail Track Corporation (ARTC), in partnership with the private sector.



0 75 150
m

Coordinate System: GDA 1994 MGA Zone 55

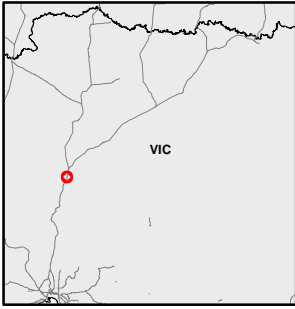
ARTC makes no representation or warranty and assumes no duty of care or other responsibility to any party as to the completeness, accuracy or suitability of the information contained in this GIS map. The GIS map has been prepared from material provided to ARTC by an external source and ARTC has not taken any steps to verify the completeness, accuracy or suitability of that material. ARTC will not be responsible for any loss or damage suffered as a result of any person whatsoever placing reliance upon the information contained within this GIS map.

Date: 16-Sep-19 Paper: A3
Author: JC Scale: 1:4,000
Data Sources: ARTC, VicMap, DataVIC

- Project Area
- Investigation Area (2018, 2019)
- Track Slew Impact Area

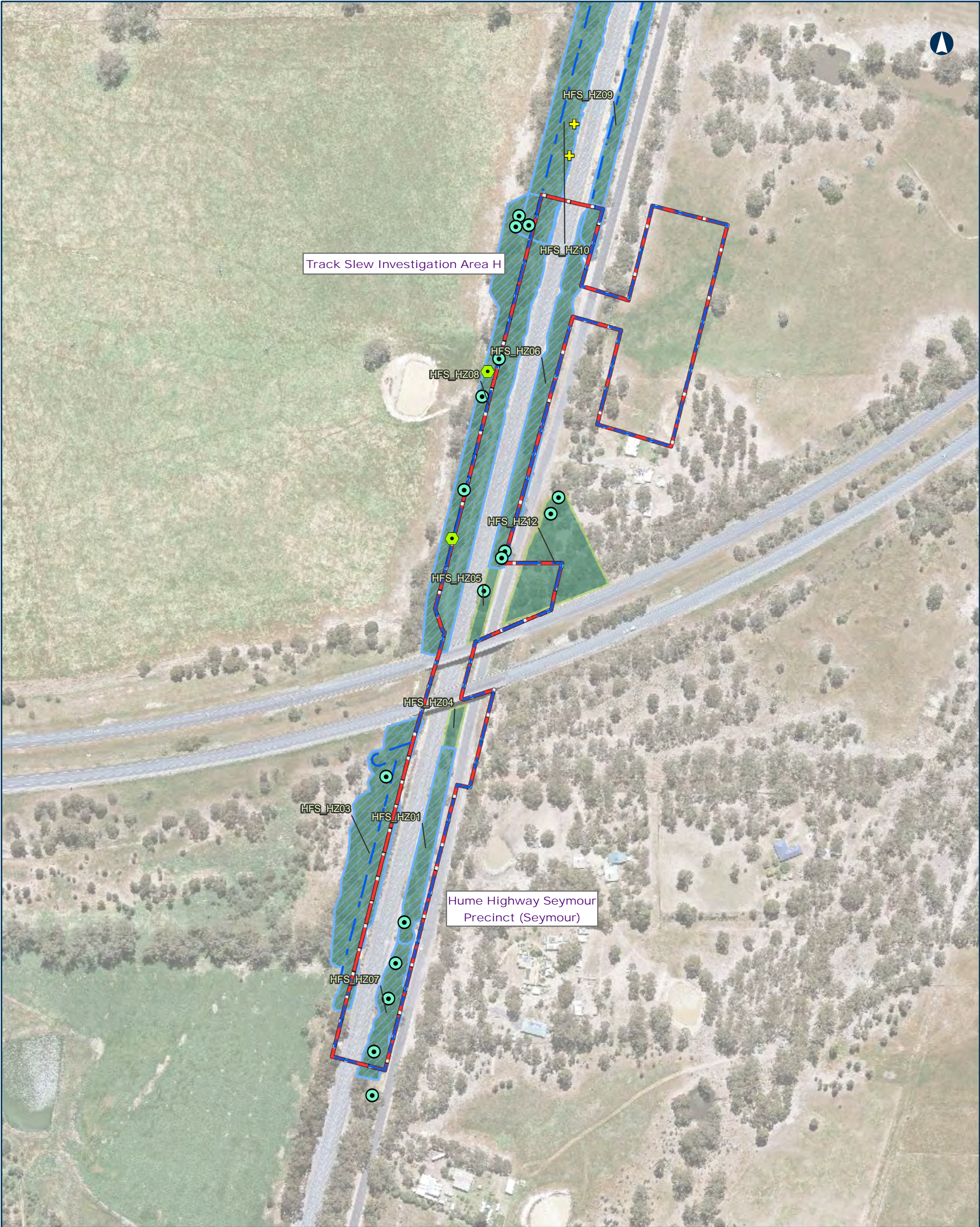
- Threatened Fauna Habitat**
- Golden Sun Moth and Striped Legless Lizard
 - Woodland Bird Habitat
 - Brush-tailed phascogale and squirrel glider
 - Mature Tree
 - Mature Tree and Hollow-Bearing

- Threatened Flora Habitat**
- Orchid Species



INLAND RAIL = ARTC

The Australian Government is delivering Inland Rail through the Australian Rail Track Corporation (ARTC), in partnership with the private sector.



Tottenham TO Albury

Ecological Habitat Map

MAP 13 OF 16

0 50 100
m

Coordinate System: GDA 1994 MGA Zone 55

ARTC makes no representation or warranty and assumes no duty of care or other responsibility to any party as to the completeness, accuracy or suitability of the information contained in this GIS map. The GIS map has been prepared from material provided to ARTC by an external source and ARTC has not taken any steps to verify the completeness, accuracy or suitability of that material. ARTC will not be responsible for any loss or damage suffered as a result of any person whatsoever placing reliance upon the information contained within this GIS map.

Date: 16-Sep-19

Paper: A3

Author: JC

Scale: 1:3,000

Data Sources: ARTC, VicMap, DataVIC



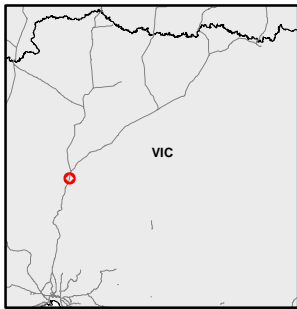
Project Area
Investigation Area
(2018, 2019)

Threatened Fauna Habitat

- Woodland Bird Habitat
- Brush-tailed phascogale and squirrel glider
- Mature Tree
- Mature Tree and Hollow-Bearing

Threatened Flora Habitat

- Orchid Species



INLAND RAIL

ARTC

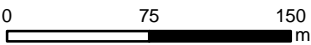
The Australian Government is delivering Inland Rail through the Australian Rail Track Corporation (ARTC), in partnership with the private sector.



Track Slew Investigation Area I

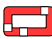

Tottenham TO Albury




Ecological Habitat Map




Coordinate System: GDA 1994 MGA Zone 55
ARTC makes no representation or warranty and assumes no duty of care or other responsibility to any party as to the completeness, accuracy or suitability of the information contained in this GIS map. The GIS map has been prepared from material provided to ARTC by an external source and ARTC has not taken any steps to verify the completeness, accuracy or suitability of that material. ARTC will not be responsible for any loss or damage suffered as a result of any person whatsoever placing reliance upon the information contained within this GIS map.

Date: 16-Sep-19 Paper: A3
Author: JC Scale: 1:4,000
Data Sources: ARTC, VicMap, DataVIC

 Project Area
 Investigation Area (2018, 2019)

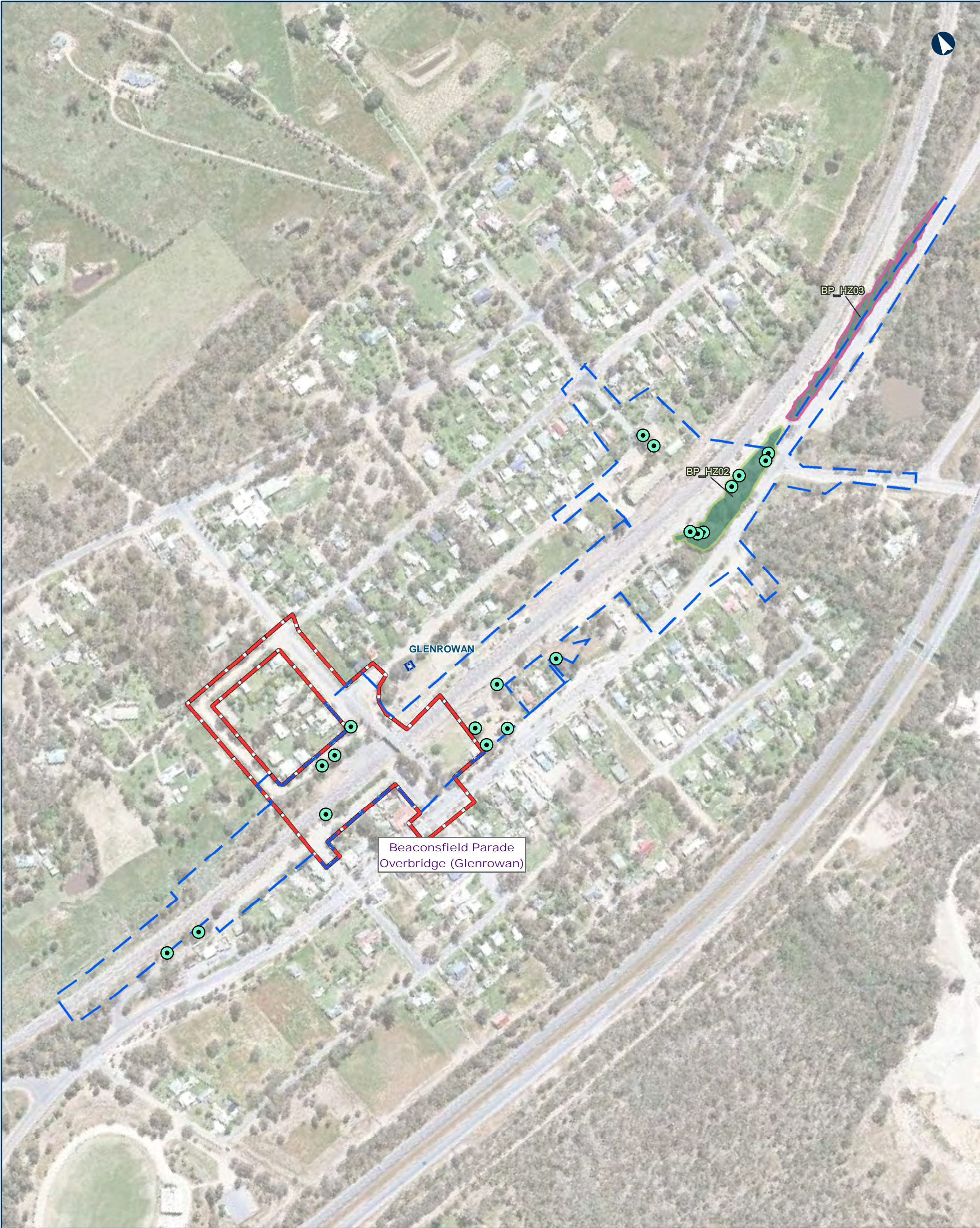
Threatened Fauna Habitat
 Woodland Bird Habitat
 Brush-tailed phascogale and squirrel glider
 Mature Tree

Threatened Flora Habitat
 Orchid Species



INLAND RAIL **ARTC**

The Australian Government is delivering Inland Rail through the Australian Rail Track Corporation (ARTC), in partnership with the private sector.



0 75 150
m

Coordinate System: GDA 1994 MGA Zone 55

ARTC makes no representation or warranty and assumes no duty of care or other responsibility to any party as to the completeness, accuracy or suitability of the information contained in this GIS map. The GIS map has been prepared from material provided to ARTC by an external source and ARTC has not taken any steps to verify the completeness, accuracy or suitability of that material. ARTC will not be responsible for any loss or damage suffered as a result of any person whatsoever placing reliance upon the information contained within this GIS map.

Date: 16-Sep-19 Paper: A3
Author: JC Scale: 1:4,000
Data Sources: ARTC, VicMap, DataVIC

Project Area
 Investigation Area
(2018, 2019)

Threatened Fauna Habitat
 Woodland Bird Habitat
 Mature Tree

Threatened Flora Habitat
 Purple diuris



INLAND RAIL **ARTC**

The Australian Government is delivering Inland Rail through the Australian Rail Track Corporation (ARTC), in partnership with the private sector.








0 50 100
m

Coordinate System: GDA 1994 MGA Zone 55

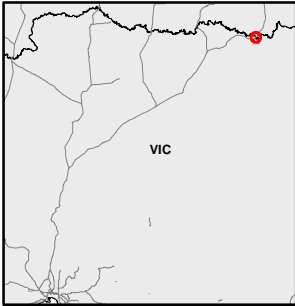
ARTC makes no representation or warranty and assumes no duty of care or other responsibility to any party as to the completeness, accuracy or suitability of the information contained in this GIS map. The GIS map has been prepared from material provided to ARTC by an external source and ARTC has not taken any steps to verify the completeness, accuracy or suitability of that material. ARTC will not be responsible for any loss or damage suffered as a result of any person whatsoever placing reliance upon the information contained within this GIS map.


Date: 16-Sep-19 Paper: A3
Author: JC Scale: 1:3,000
Data Sources: ARTC, VicMap, DataVIC

 Project Area
 Investigation Area (2018, 2019)

Threatened Fauna Habitat
 Woodland Bird Habitat
 Squirrel glider
 Mature Tree

Threatened Flora Habitat



INLAND RAIL  **ARTC**

The Australian Government is delivering Inland Rail through the Australian Rail Track Corporation (ARTC), in partnership with the private sector.