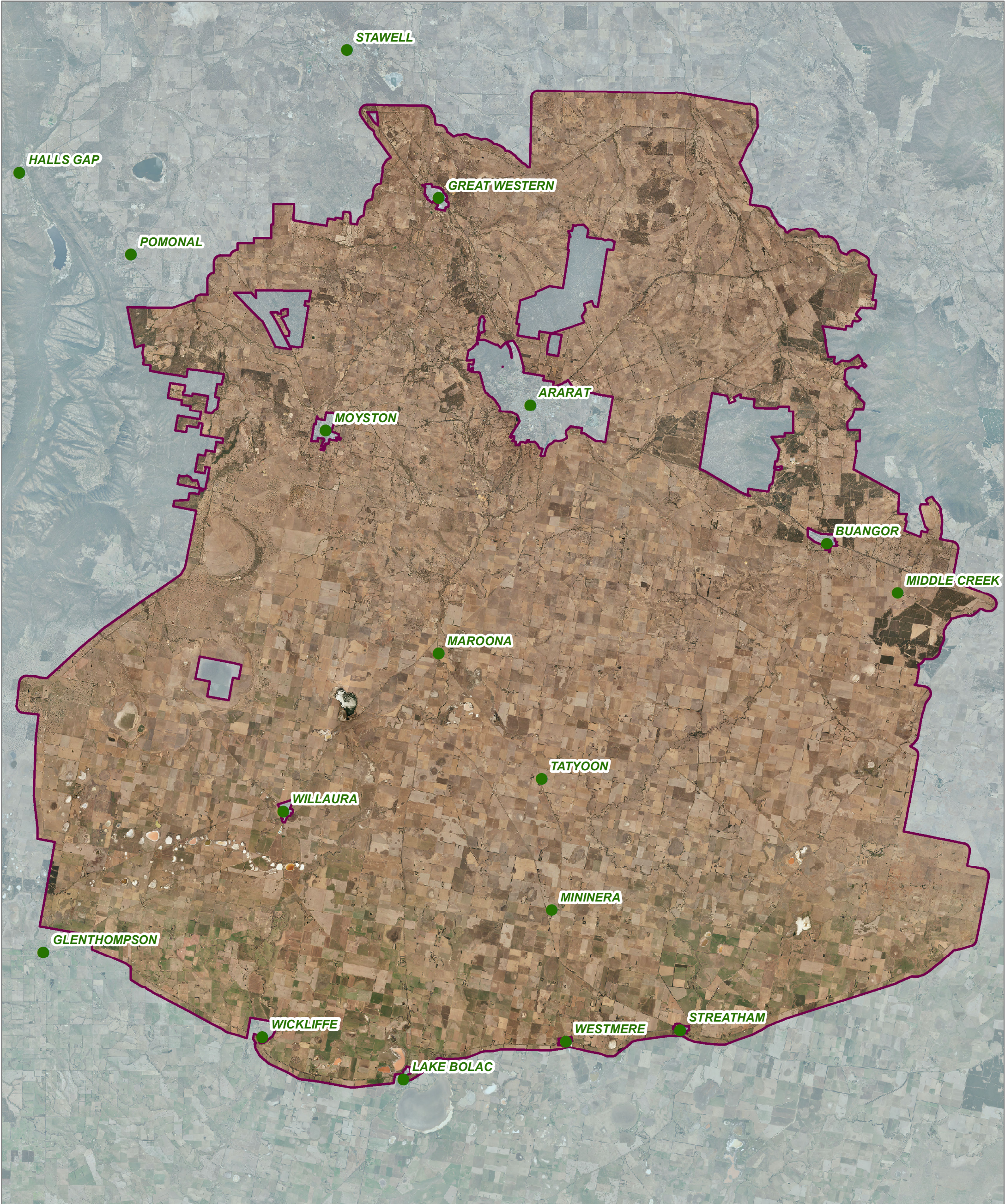



# Project Extent





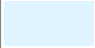
Condition of Use:  
Geographic Information System (GIS) information is provided by GWMWater to external parties on the understanding it will only be used for the project intended. The information provided must not be used in whole or in part for any other use without prior approval from GWMWater. The information is intended to be indicative only. External parties should make their own enquiries to ensure the accuracy of the information. GWMWater takes no responsibility for inaccurate or misleading data.



0 5 10 Kilometres

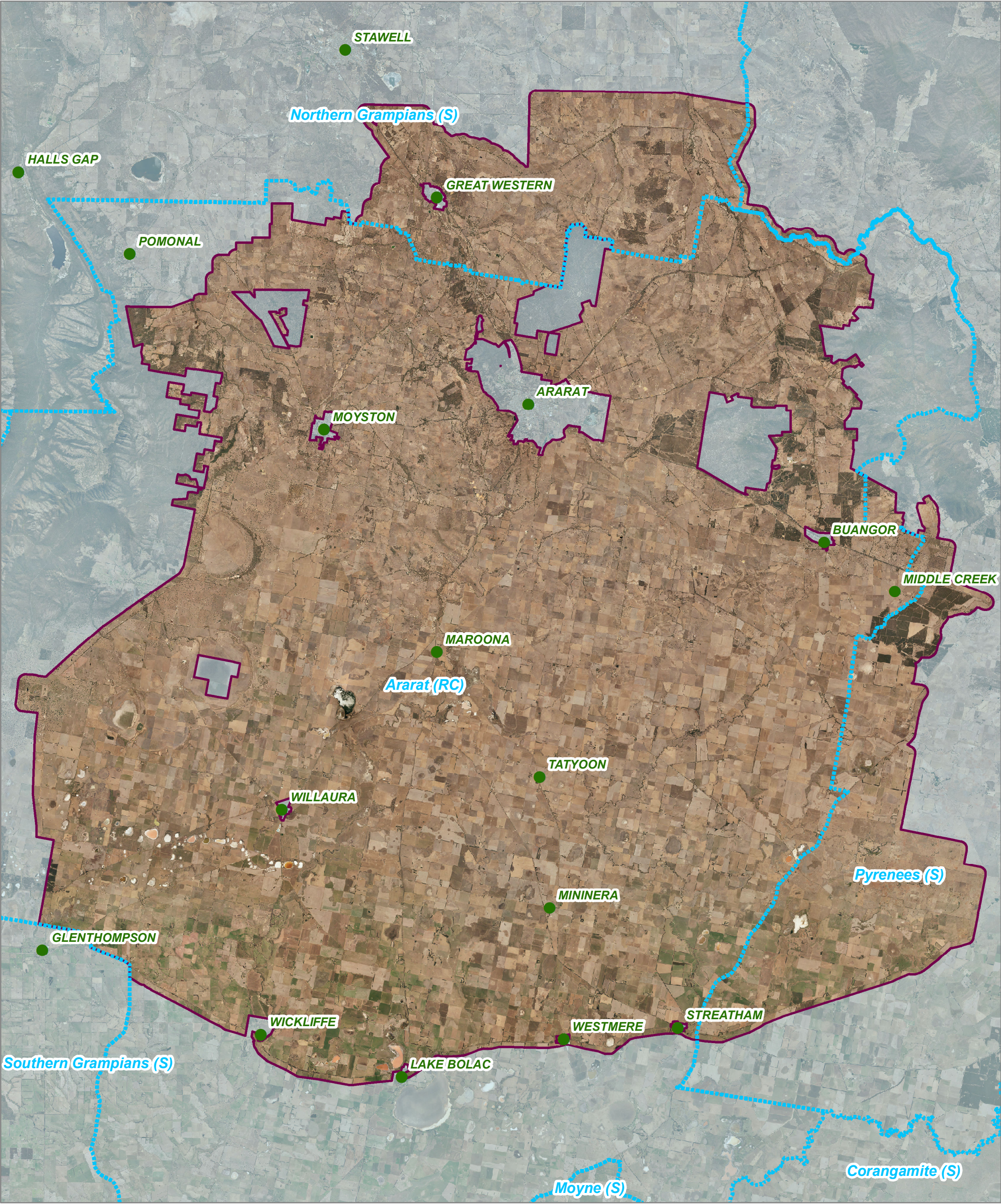
Prepared by: Dean Robertson  
Published date: 5 March 2019

**Legend**


-  Main Towns
-  Project Extent
-  Excluded areas




# Local Government Areas






Condition of Use:  
Geographic Information System (GIS) information is provided by GWMWater to external parties on the understanding it will only be used for the project intended. The information provided must not be used in whole or in part for any other use without prior approval from GWMWater. The information is intended to be indicative only. External parties should make their own enquiries to ensure the accuracy of the information. GWMWater takes no responsibility for inaccurate or misleading data.



Prepared by: Dean Robertson  
Published date: 5 March 2019

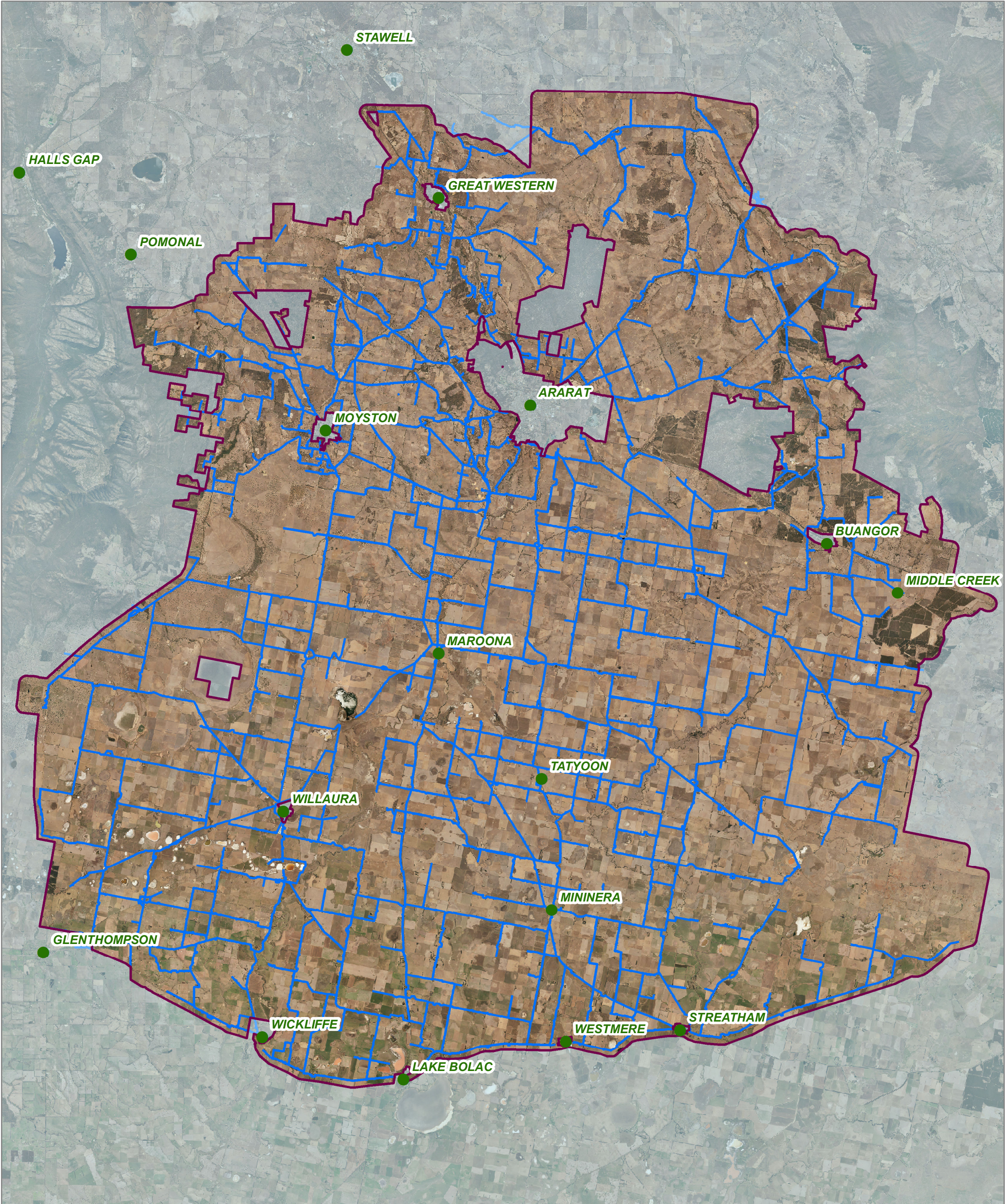


### Legend


-  Local Government
-  Main Towns
-  Project Extent



# Potential Construction Corridors






Condition of Use:  
Geographic Information System (GIS) information is provided by GWMWater to external parties on the understanding it will only be used for the project intended. The information provided must not be used in whole or in part for any other use without prior approval from GWMWater. The information is intended to be indicative only. External parties should make their own enquiries to ensure the accuracy of the information. GWMWater takes no responsibility for inaccurate or misleading data.



0 5 10 Kilometres

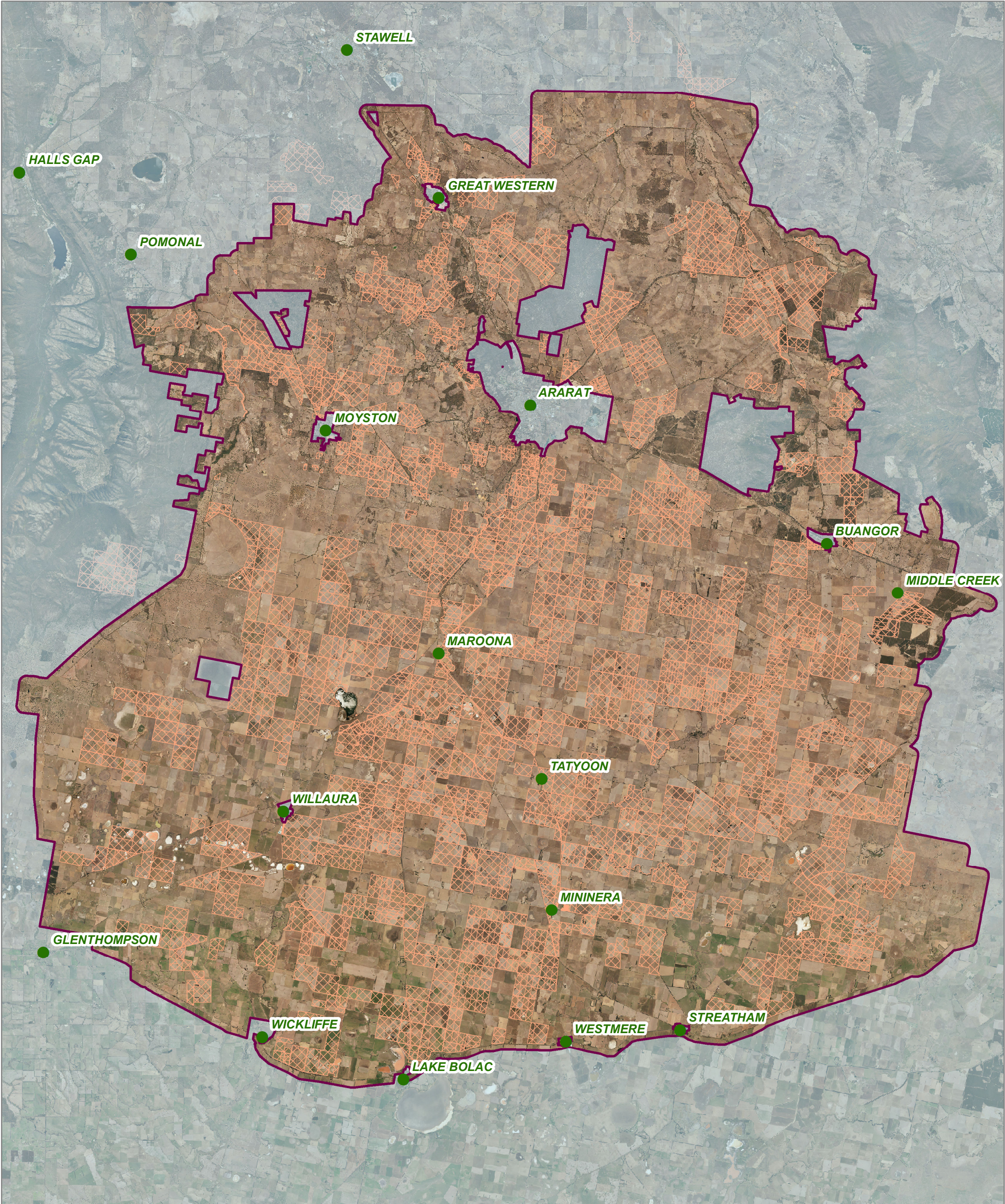
Prepared by: Dean Robertson  
Published date: 5 March 2019

**Legend**


-  Main Towns
-  Project Extent
-  Potential Corridors



# Landholder Expressions of Interest (21 March 2019)




Condition of Use:  
Geographic Information System (GIS) information is provided by GWMWater to external parties on the understanding it will only be used for the project intended. The information provided must not be used in whole or in part for any other use without prior approval from GWMWater. The information is intended to be indicative only. External parties should make their own enquiries to ensure the accuracy of the information. GWMWater takes no responsibility for inaccurate or misleading data.




N

Prepared by: Dean Robertson  
Published date: 5 March 2019



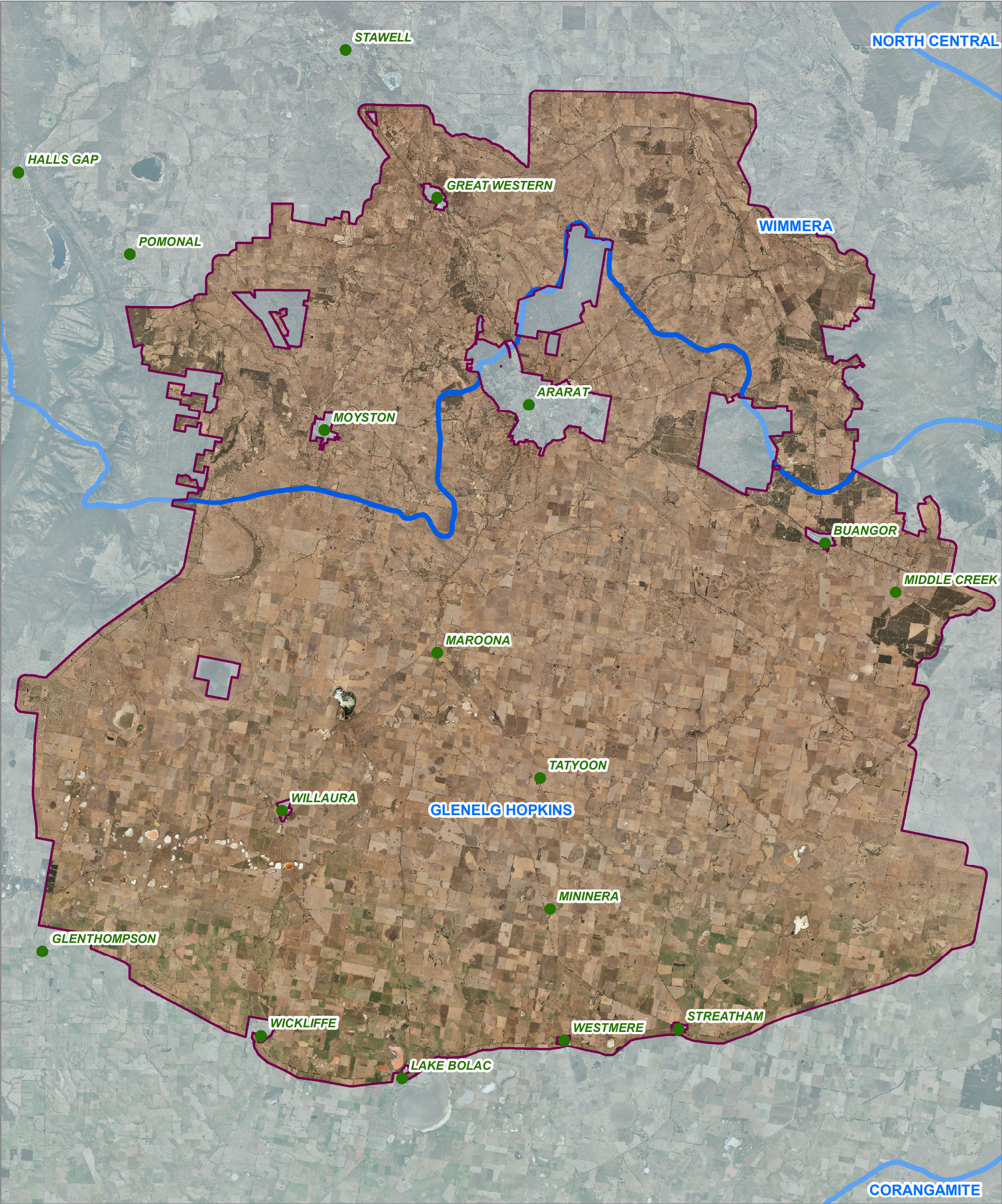
0 5 10 Kilometres

**Legend**


-  Main Towns
-  Project Extent
-  20190321\_EGPP\_EOIs




# Catchment Management Authorities



Condition of Use:  
Geographic Information System (GIS) information is provided by GWMWater to external parties on the understanding it will only be used for the project intended. The information provided must not be used in whole or in part for any other use without prior approval from GWMWater. The information is intended to be indicative only. External parties should make their own enquiries to ensure the accuracy of the information. GWMWater takes no responsibility for inaccurate or misleading data.



Prepared by: Dean Robertson  
Published date: 5 March 2019



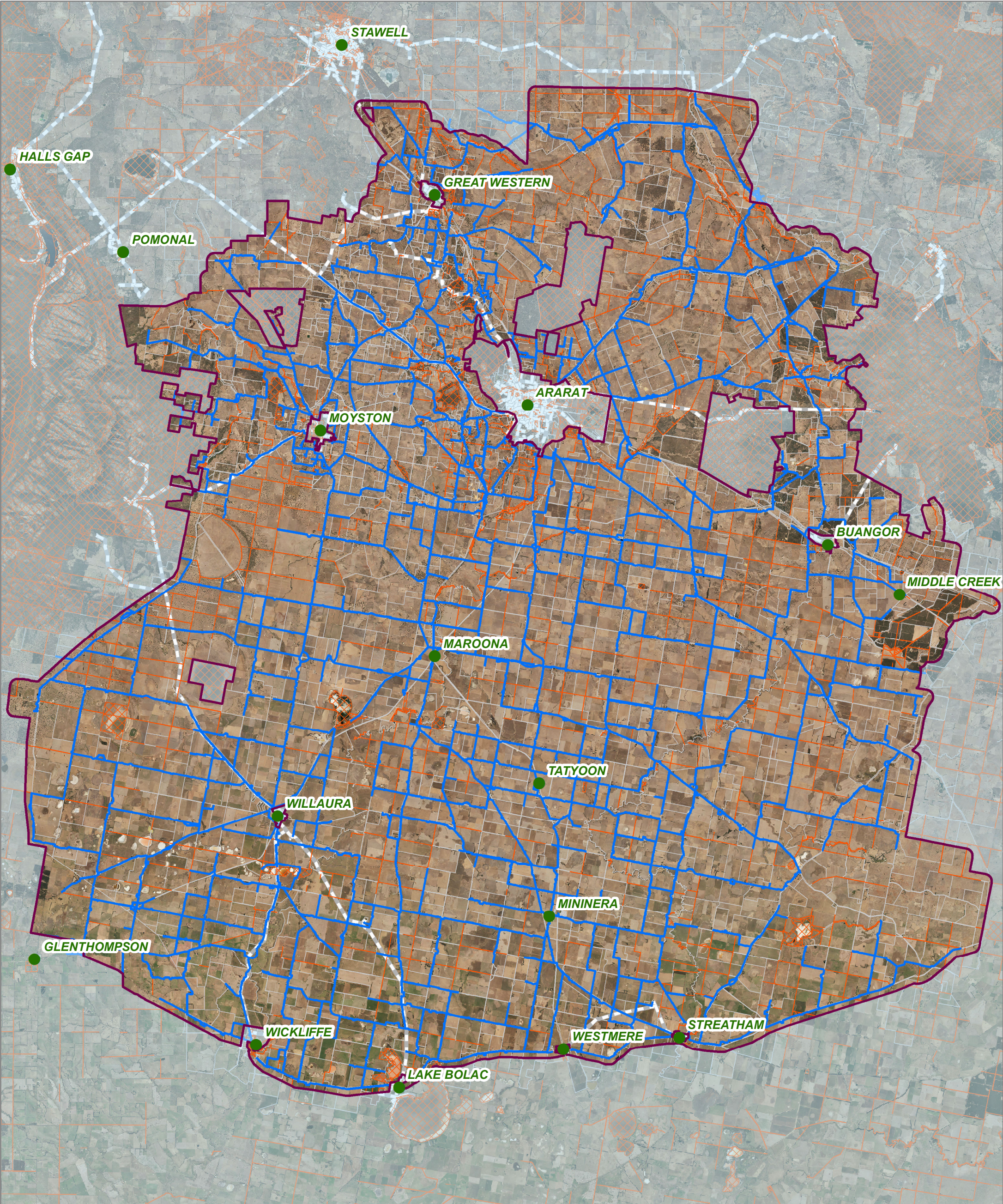
0 5 10 Kilometres

**Legend**


- Main Towns
- Project Extent
- CMA



# Crown Land & Potential Construction Corridors

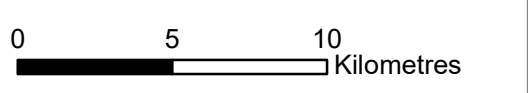


Condition of Use:  
Geographic Information System (GIS) information is provided by GWMWater to external parties on the understanding it will only be used for the project intended. The information provided must not be used in whole or in part for any other use without prior approval from GWMWater. The information is intended to be indicative only. External parties should make their own enquiries to ensure the accuracy of the information. GWMWater takes no responsibility for inaccurate or misleading data.




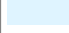


N

Prepared by: Dean Robertson  
Published date: 5 March 2019



0 5 10 Kilometres

**Legend**

-  Project Extent
-  Excluded areas
-  Potential Corridors
-  Crown Land