

Melbourne Metropolitan Region Urban Vegetation Cover: 2018



Environment,
Land, Water
and Planning



Date: 17/6/2019

Project: Metropolitan monitoring and analysis of vegetation cover, heat and land use

Client: Department of Environment, Land, Water and Planning, Victorian Government

Report: Urban Vegetation Cover Analysis, Melbourne Metropolitan Region 2018

Project Team:

Associate Professor Joe Hurley, RMIT University

Mr Alex Saunders, University of Western Australia

Associate Professor Marco Amati, RMIT University

Dr Bryan Boruff, University of Western Australia

Dr Alan Both, RMIT University

Dr Chayn Sun, RMIT University

Dr Peter Caccetta, CSIRO Data 61

Dr John Duncan, University of Western Australia

Reference: Hurley, J., Saunders, A., Amati, M., Boruff, B., Both, A., Sun, C., Caccetta, P., and Duncan, J. (2018) *Urban Vegetation Cover Analysis, Melbourne Metropolitan Region 2018*, (Unpublished Report), Department of Environment, Land, Water and Planning, Melbourne, Australia.



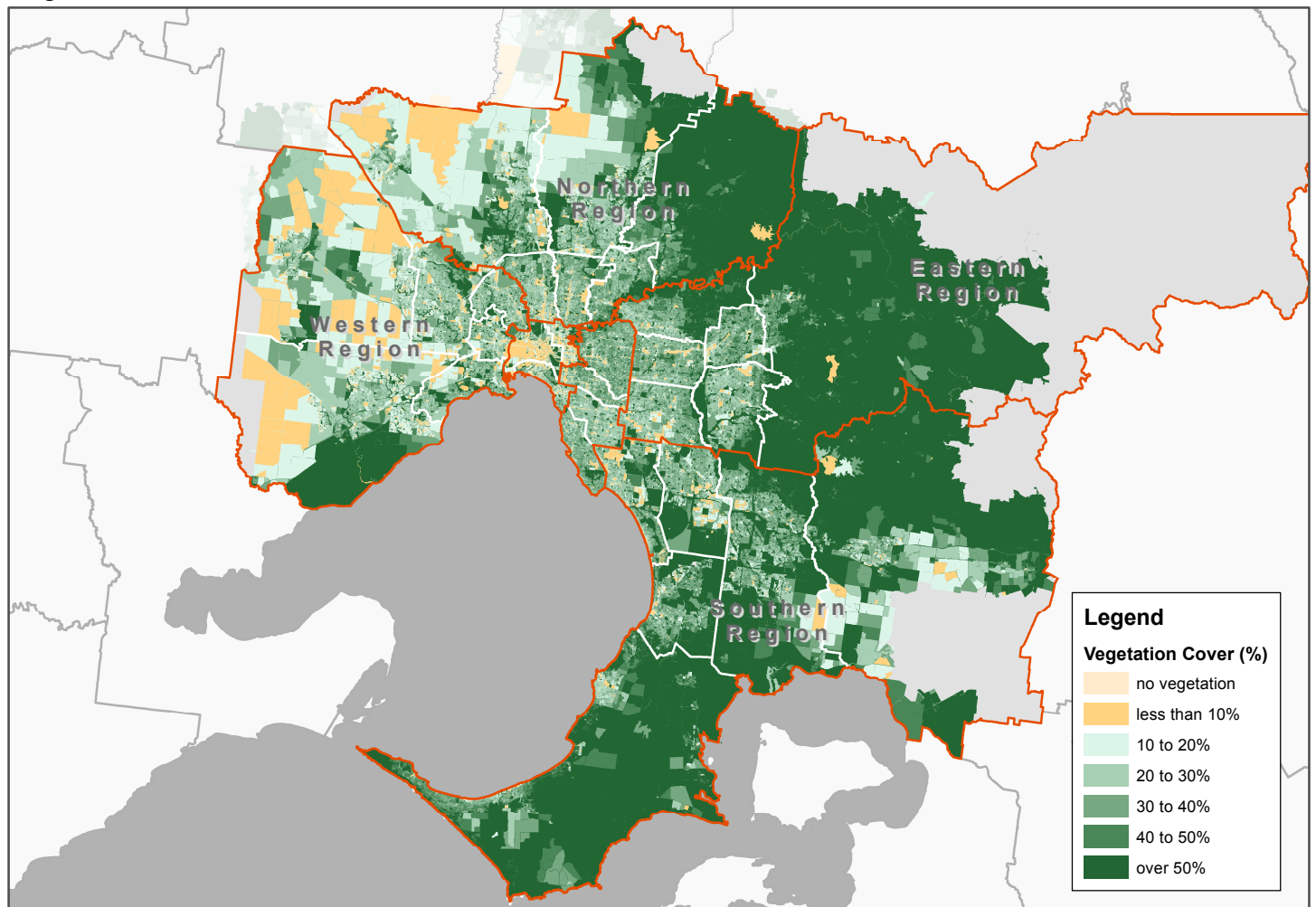
Environment,
Land, Water
and Planning



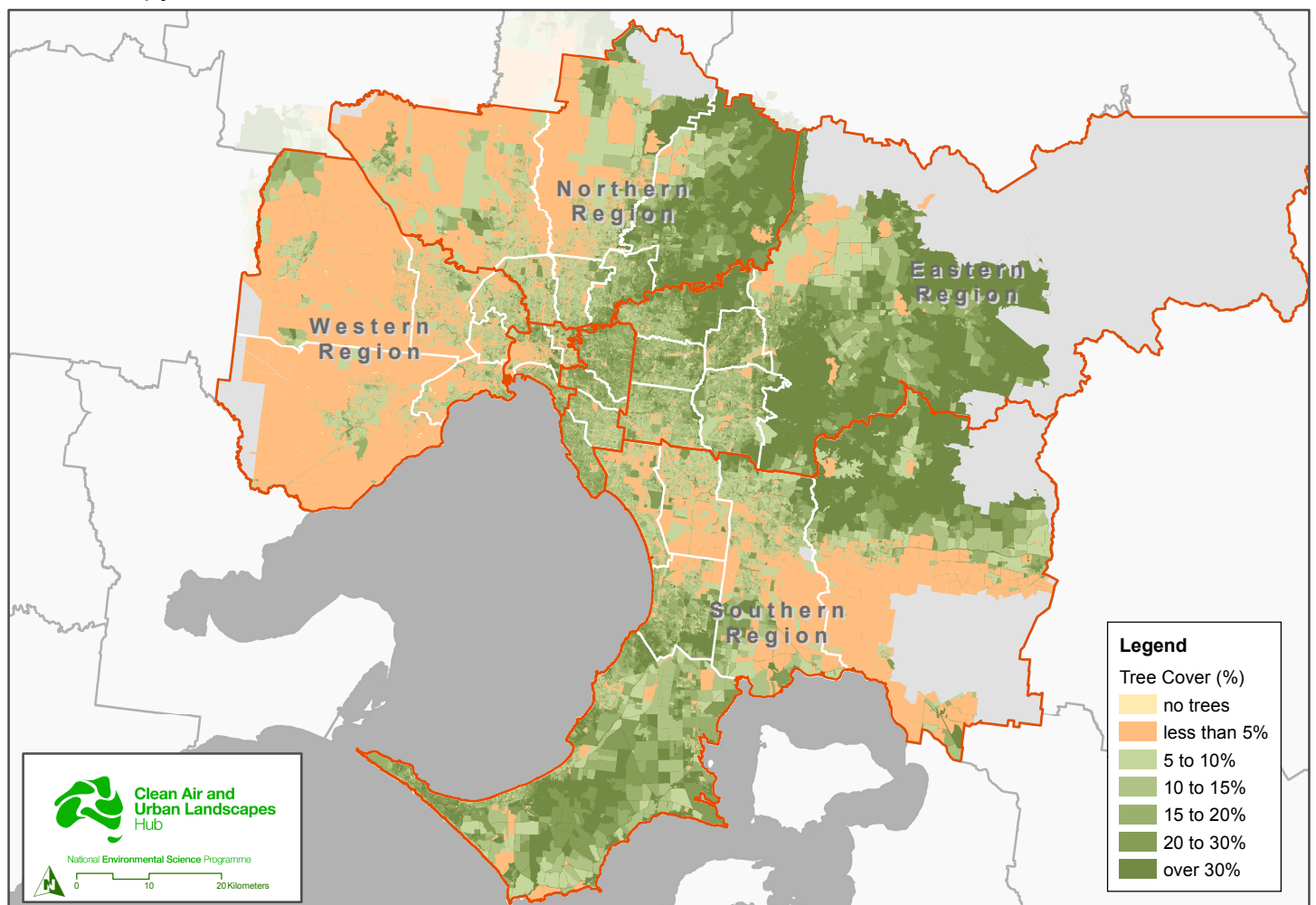
Melbourne Metropolitan Region

Vegetation Cover and Tree Canopy

Vegetation Cover - Modified Mesh Block



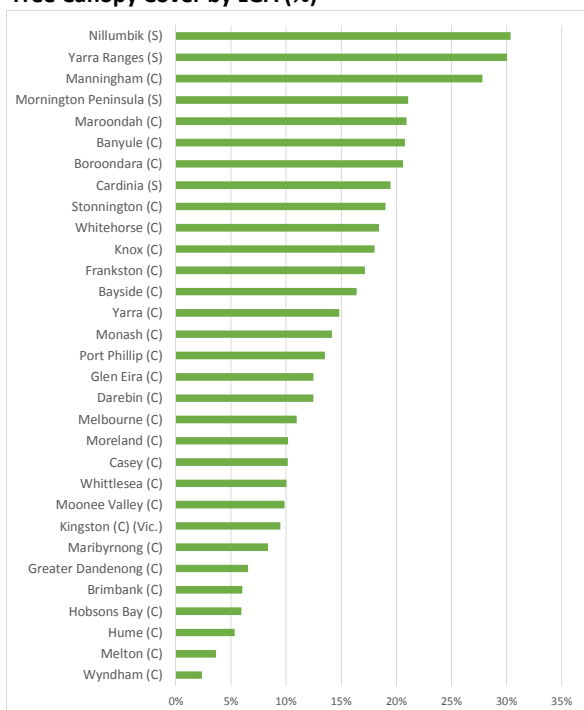
Tree Canopy - Modified Mesh Block



Vegetation Cover and Tree Canopy (2018)

Melbourne Metropolitan Region Urban and Non-urban Areas Collectively

Tree Canopy Cover by LGA (%)



Highlights

Overall the region has 16.2% tree canopy cover and 47.2% total vegetation cover.

Primary Production land provides the highest proportion of total vegetation and tree canopy (41.1% and 31.2% respectively).

Residential land has the second highest levels of total vegetation and tree canopy (17.5% and 20.6% respectively).

Parkland has the third highest levels of total vegetation and tree canopy (16.0% and 20.1% respectively).

Infrastructure (streets) account for 10.0% of all tree canopy and 7.0% of all vegetation.

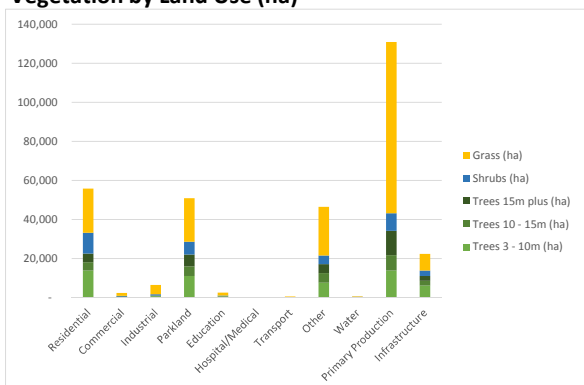
Total vegetation yields are highest on Parkland and "other" land (66.3% and 59.6% respectively).

"Other" land uses are an important contributor to tree canopy both in terms of yield (59.6%) and as a proportion of overall tree canopy (15.6%).

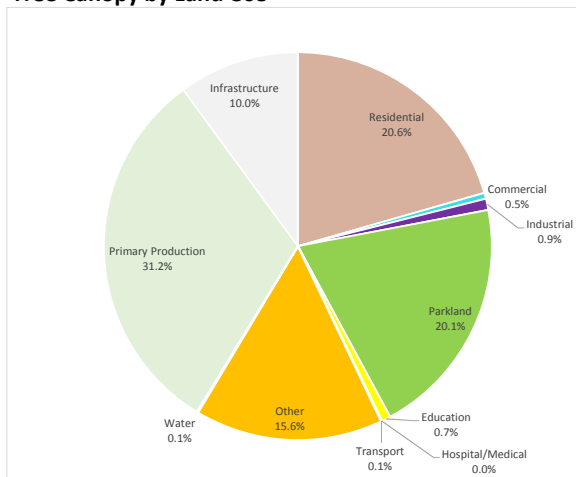
The Eastern Region has the highest vegetation cover and the highest tree canopy cover (61.3% and 27.1% respectively).

The Western Region has the lowest levels of total vegetation cover and tree canopy cover (3.8% and 26.7% respectively).

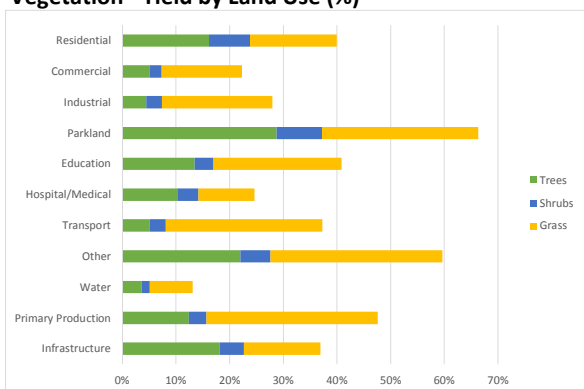
Vegetation by Land Use (ha)



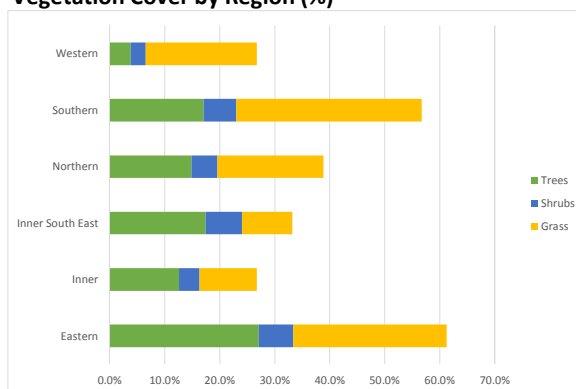
Tree Canopy by Land Use



Vegetation - Yield by Land Use (%)



Vegetation Cover by Region (%)



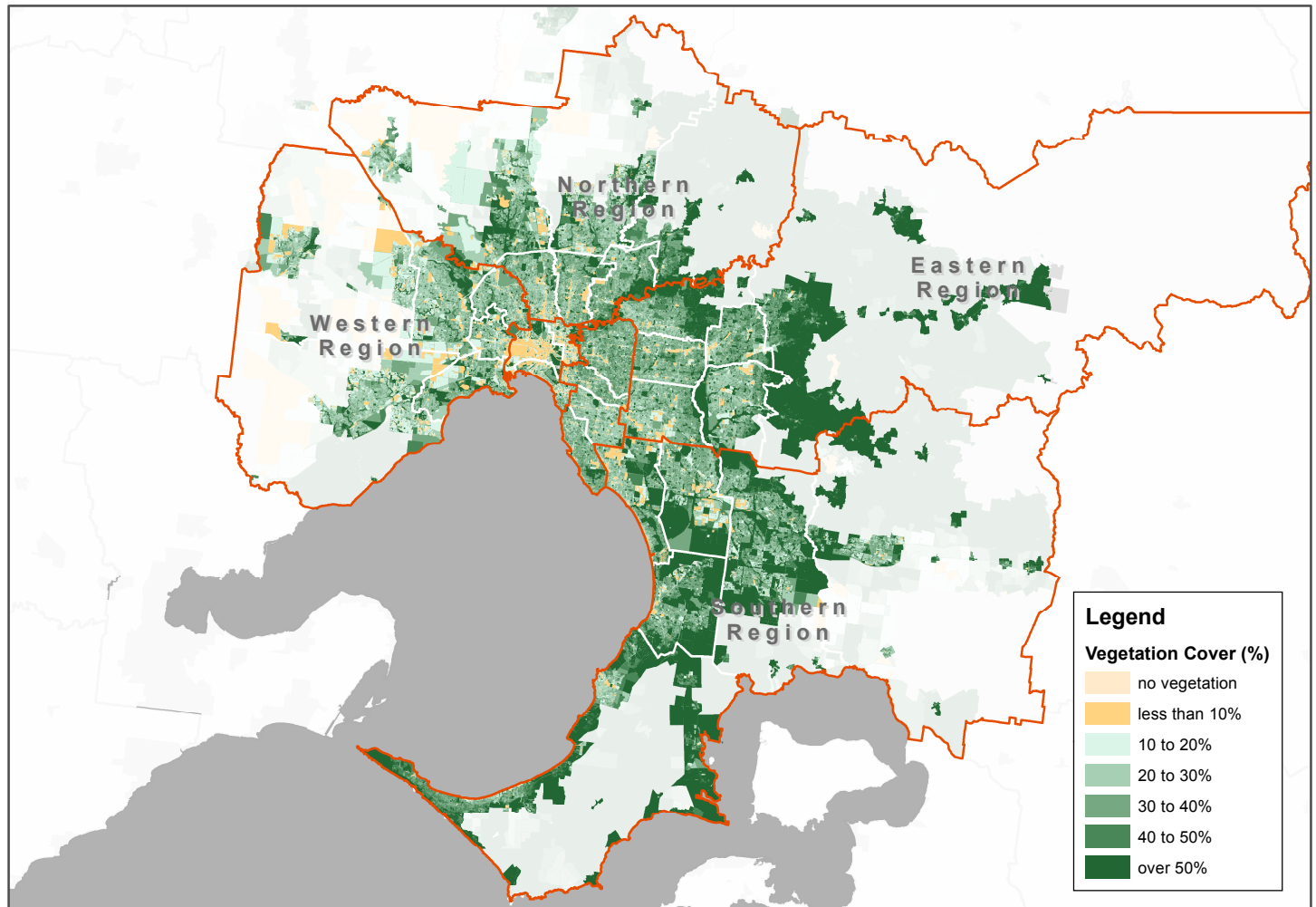
Notes:

- Analysis based on the 2018 data capture (limited to features where data coverage is greater than 90%), combining both urban and non-urban areas.
- Mesh Blocks classified as "other" are representative of land uses which could not be easily placed in one of the other nine categories due to the nature of the land use, or due to evidence of high mixed use.

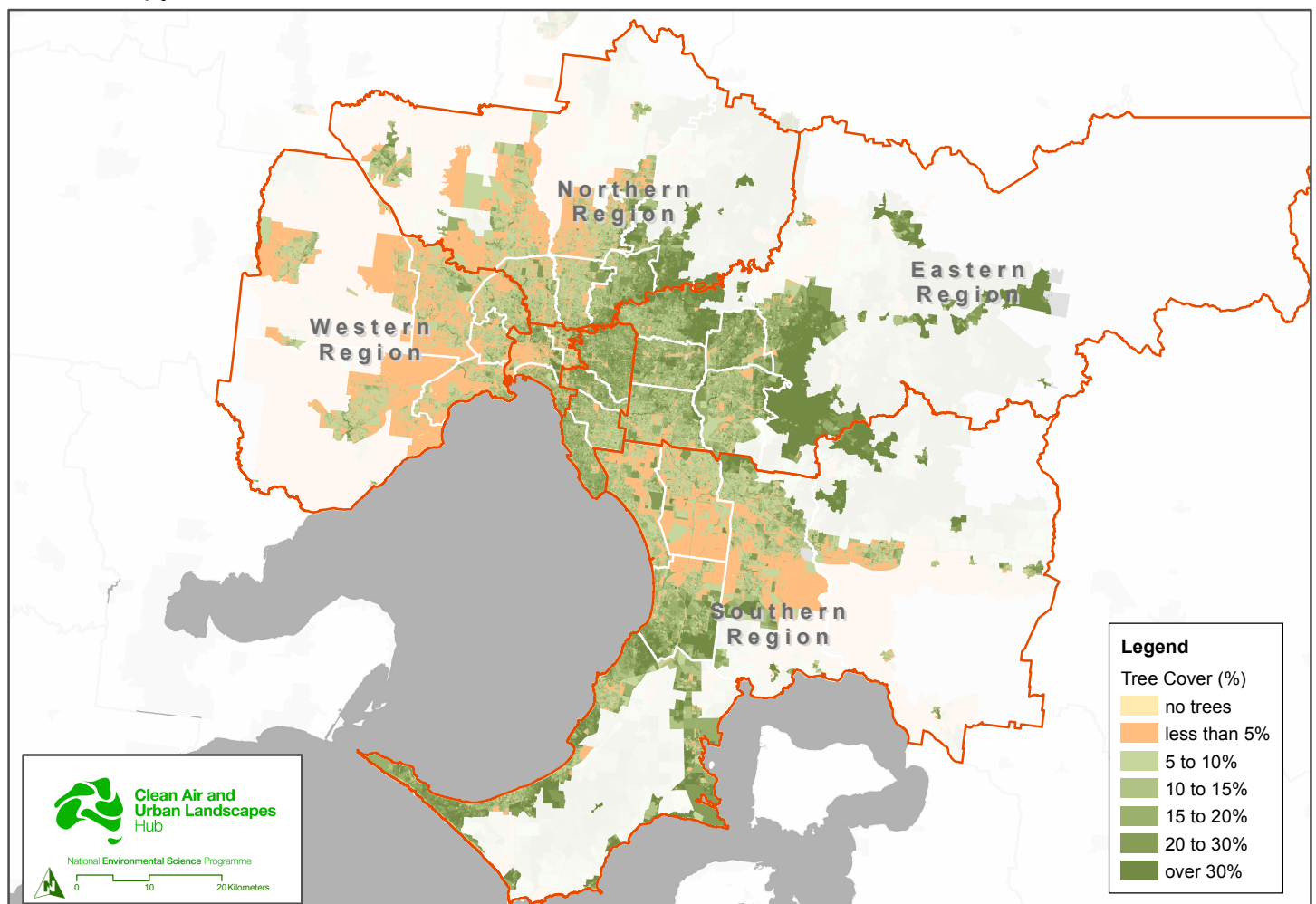
Melbourne Metropolitan Region

Vegetation Cover and Tree Canopy Urban Centres and Localities Only

Vegetation Cover - Modified Mesh Block



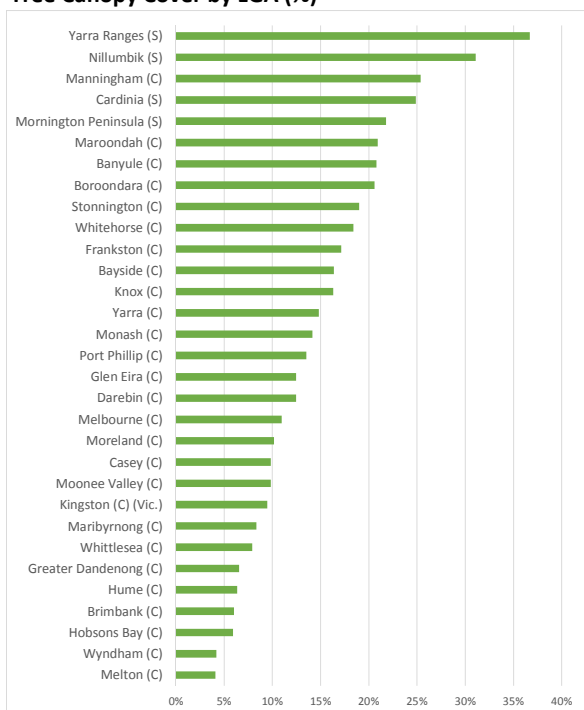
Tree Canopy - Modified Mesh Block



Vegetation Cover and Tree Canopy (2018)

Melbourne Metropolitan Region Urban Centres and Localities Only

Tree Canopy Cover by LGA (%)



Highlights

Overall, in urbanised areas, the region has 15.3% tree canopy cover and 42.0% total vegetation cover.

In urbanised areas, residential Land provides the highest proportion of total vegetation and tree canopy (40.9% and 46.7% respectively).

In urbanised areas, the second most significant land for vegetation is parkland which has 19.5% of total vegetation and 18.5% of trees.

Collectively residential land and parkland account for 60.4% of total vegetation and 65.2% of tree canopy in urbanised areas.

Total vegetation yields are highest on parkland and "other" land (63.7% and 61.0% respectively).

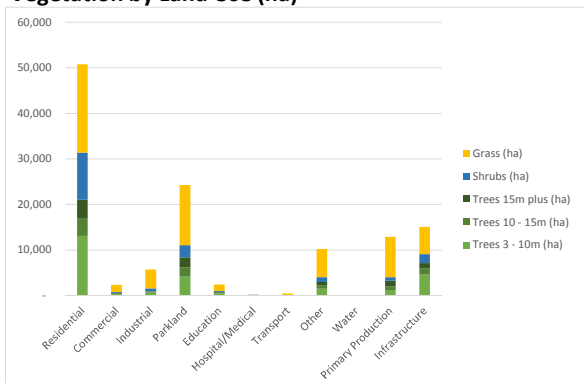
The highest tree canopy yields are found on parkland and "other" land (21.9% and 17.9% respectively).

Infrastructure (streets) is the third most important land-use in terms of both total vegetation cover and tree canopy cover (12.1% and 15.7% respectively).

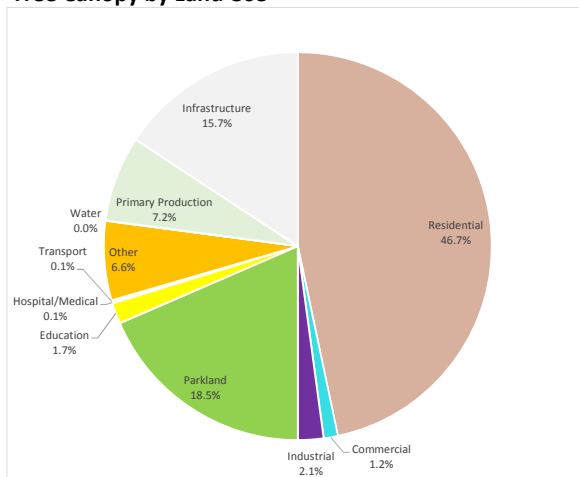
In urbanised areas the Eastern Region has both the highest total vegetation cover and the highest tree canopy cover (49.1% and 25.9% respectively).

In urbanised areas the Western Region has both the lowest total vegetation cover and the lowest tree canopy cover (28.2% and 5.5% respectively).

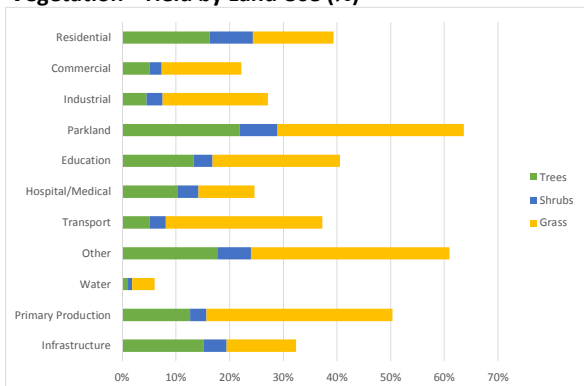
Vegetation by Land Use (ha)



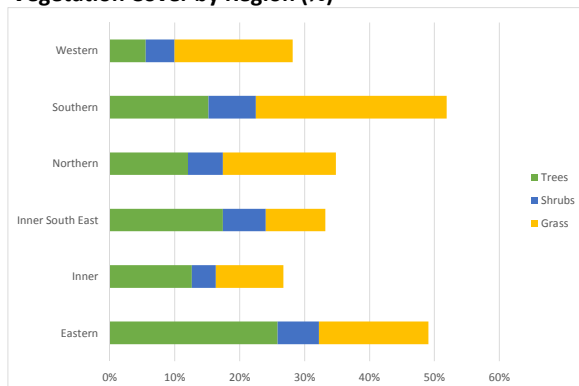
Tree Canopy by Land Use



Vegetation - Yield by Land Use (%)



Vegetation Cover by Region (%)



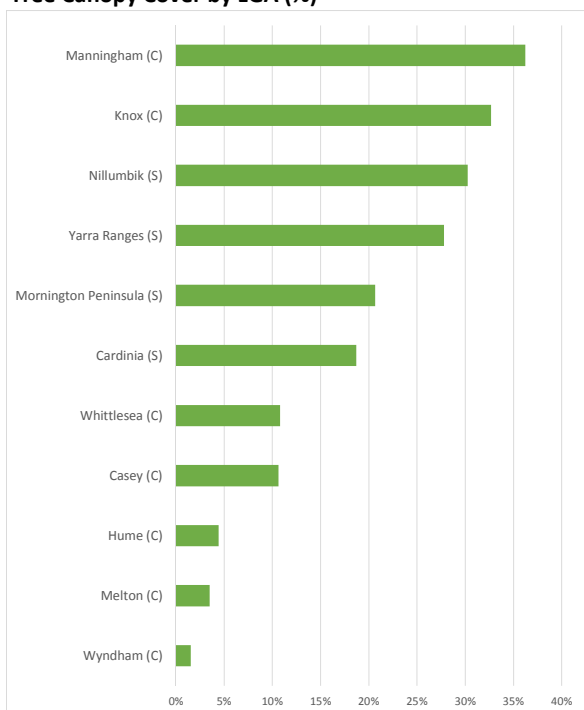
Notes:

1. Analysis based on the 2018 data capture (limited to features where data coverage is greater than 90%), limited to urban areas as defined by ABS Urban Centres and Localities 2016.
2. Mesh Blocks classified as "other" are representative of land uses which could not be easily placed in one of the other nine categories due to the nature of the land use, or due to evidence of high mixed use.

Vegetation Cover and Tree Canopy (2018)

Melbourne Metropolitan Region Non-urban Areas Only

Tree Canopy Cover by LGA (%)



Highlights

Overall, in non-urban areas the region has 17.0% tree canopy cover and 51.3% total vegetation cover.

Primary Production land provides the highest proportion of total vegetation and tree canopy (60.7% and 48.1% respectively).

Parkland accounts for 13.7% of total vegetation and 21.2% of tree canopy in non-urban areas.

Residential land accounts for only 2.6% of total vegetation and 2.3% of tree canopy in non-urban areas.

Linear infrastructure accounts for only 3.8% of total vegetation and 6.1% of tree canopy.

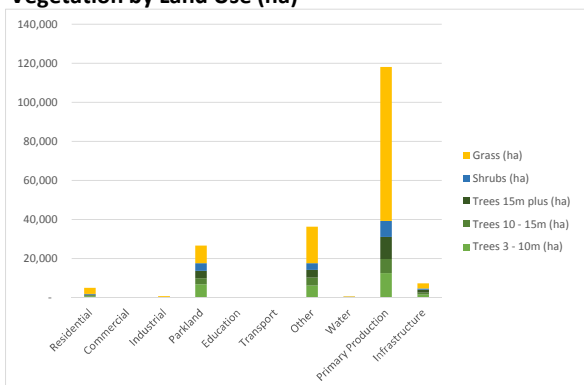
Total vegetation yields are highest on Parkland and "other" land (69.0% and 59.3% respectively).

"Other" land uses are an important contributor to tree canopy both in terms of yield (18.6%) and as a proportion of overall tree canopy (22.0%).

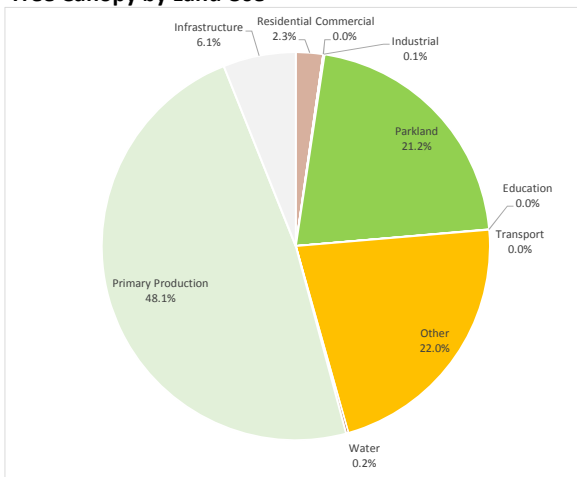
In the non-urbanised area, the Eastern Region has both the highest vegetation cover and the highest tree canopy cover (71.3% and 28.1% respectively).

The lowest levels of both total vegetation and tree canopy cover are in the Western Region (25.7% and 2.6% respectively).

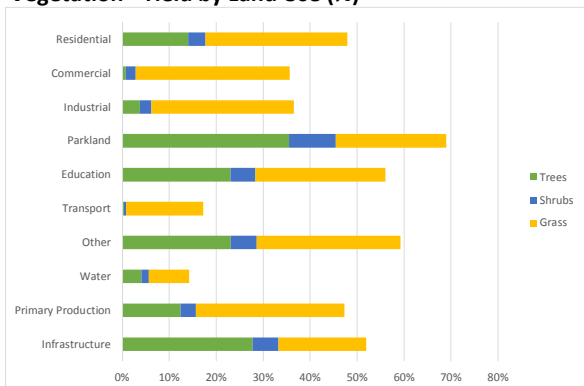
Vegetation by Land Use (ha)



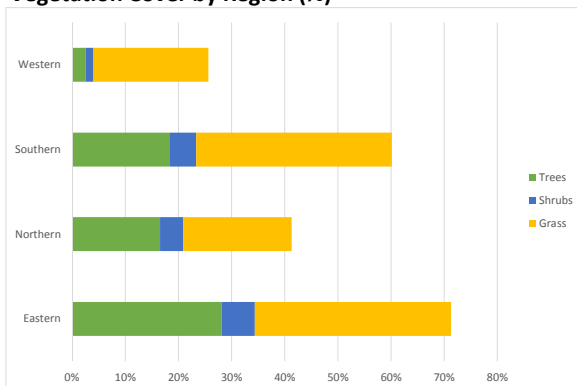
Tree Canopy by Land Use



Vegetation - Yield by Land Use (%)



Vegetation Cover by Region (%)



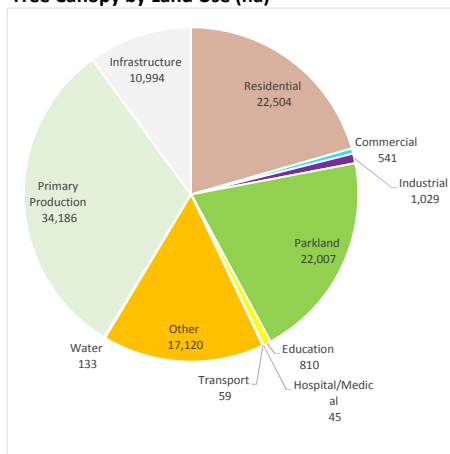
Notes:

1. Analysis based on the 2018 data capture (limited to features where data coverage is greater than 90%), limited to non-urban areas being those areas outside ABS Urban Centres and Localities 2016.
2. Mesh Blocks classified as "other" are representative of land uses which could not be easily placed in one of the other nine categories due to the nature of the land use, or due to evidence of high mixed use.

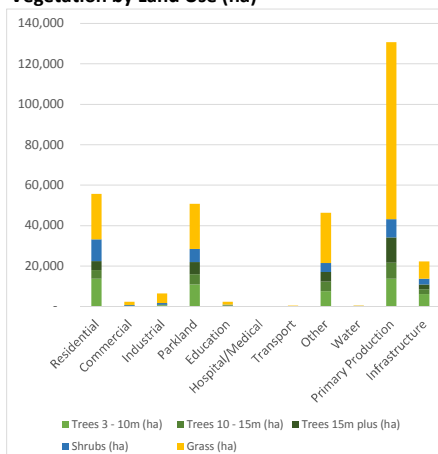
Vegetation Cover and Tree Canopy (2018) Melbourne Metropolitan Region

Data Summary - Whole Region

Tree Canopy by Land Use (ha)



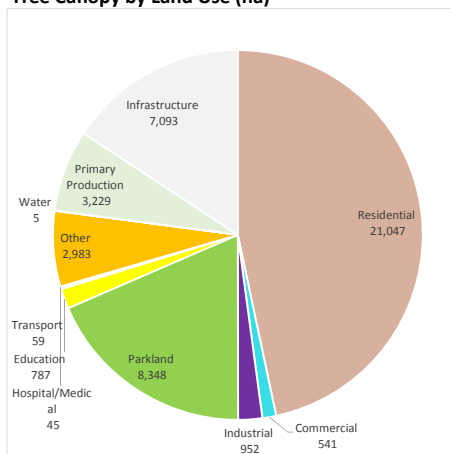
Vegetation by Land Use (ha)



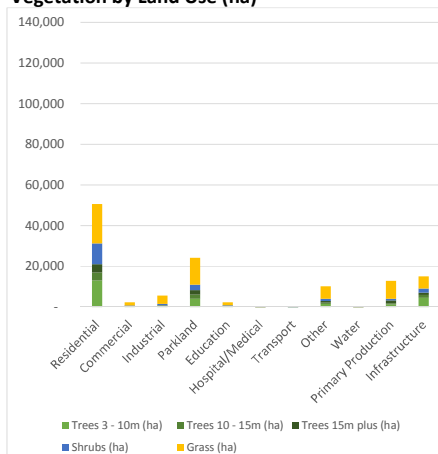
Key Statistics	Melbourne Overall
Tree Canopy Cover (%)	16.2%
Total vegetation Cover (%)	47.2%
Shrub Cover (%)	5.1%
Grass Cover (%)	25.9%
Percentage of tree canopy on residential land	20.6%
Percentage of tree canopy on parkland	20.1%
Percentage of tree canopy on infrastructure	10.0%
Percentage of tree canopy on "other" land	15.6%
Percentage of tree canopy on primary production land	31.2%

Data Summary - Urban Centres and Localities

Tree Canopy by Land Use (ha)



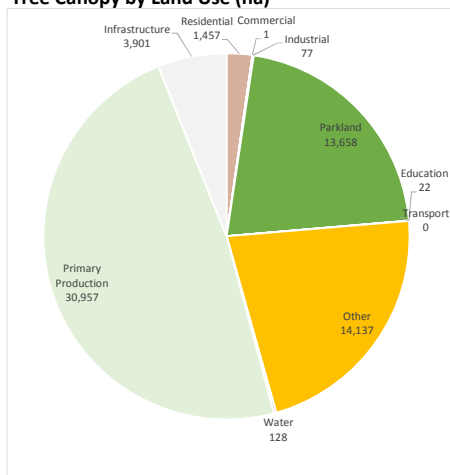
Vegetation by Land Use (ha)



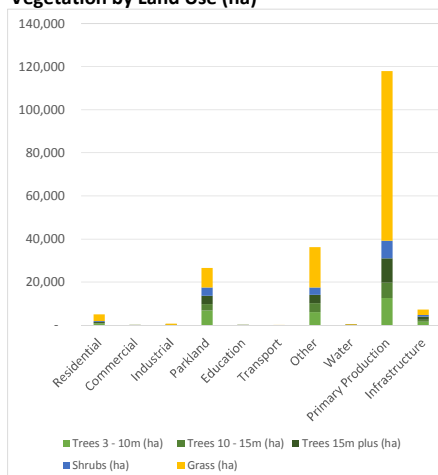
Key Statistics	Melbourne Urban Areas
Tree Canopy Cover (%)	15.3%
Total vegetation Cover (%)	42.0%
Shrub Cover (%)	6.1%
Grass Cover (%)	20.7%
Percentage of tree canopy on residential land	46.7%
Percentage of tree canopy on parkland	18.5%
Percentage of tree canopy on infrastructure	15.7%
Percentage of tree canopy on "other" land	6.6%
Percentage of tree canopy on primary production land	7.2%

Data Summary - Non-urban areas

Tree Canopy by Land Use (ha)



Vegetation by Land Use (ha)



Key Statistics	Melbourne Non-urban Areas
Tree Canopy Cover (%)	17.0%
Total vegetation Cover (%)	51.3%
Shrub Cover (%)	4.4%
Grass Cover (%)	29.9%
Percentage of tree canopy on residential land	2.3%
Percentage of tree canopy on parkland	21.2%
Percentage of tree canopy on infrastructure	6.1%
Percentage of tree canopy on "other" land	22.0%
Percentage of tree canopy on primary production land	48.1%

Notes:

- Mesh Blocks classified as "other" are representative of land uses which could not be easily placed in one of the other nine categories due to the nature of the land use, or due to evidence of high mixed use.
- Analysis uses only features where data coverage is greater than 90%.

Melbourne Metropolitan Region - Data Tables

Land Use and Vegetation - Urban and Non-urban areas

Vegetation Area (ha)

Land Use	Grass (ha)	Shrubs (ha)	Trees 3 to 10m (ha)	Trees 10 to 15m (%)	Trees 15m plus (ha)	Total Trees (ha)	Total Vegetation (%)	Total Land Area within Study (ha)
Residential	22,502	10,698	13,803	4,265	4,436	22,504	55,705	139,248
Commercial	1,590	240	324	137	80	541	2,371	10,621
Industrial	4,736	681	673	240	115	1,029	6,446	23,012
Parkland	22,259	6,521	10,969	5,027	6,011	22,007	50,787	76,566
Education	1,428	213	441	220	148	810	2,451	6,000
Hospital/Medical	46	17	30	11	5	45	108	439
Transport	341	36	39	14	6	59	435	1,167
Other	24,867	4,391	7,559	4,867	4,693	17,120	46,378	77,752
Water	289	52	53	37	44	133	475	3,619
Primary Production	87,659	8,999	13,764	7,962	12,460	34,186	130,843	274,925
Infrastructure	8,630	2,756	6,154	2,375	2,465	10,994	22,379	60,580
Total	174,347	34,604	53,808	25,155	30,465	109,427	318,378	673,928

Vegetation Cover (%)

Land Use	Grass (%)	Shrubs (%)	Trees 3 to 10m (%)	Trees 10 to 15m (%)	Trees 15m plus (%)	Total Trees (%)	Total Vegetation (%)
Residential	16.2%	7.7%	9.9%	3.1%	3.2%	16.2%	40.0%
Commercial	15.0%	2.3%	3.0%	1.3%	0.8%	5.1%	22.3%
Industrial	20.6%	3.0%	2.9%	1.0%	0.5%	4.5%	28.0%
Parkland	29.1%	8.5%	14.3%	6.6%	7.9%	28.7%	66.3%
Education	23.8%	3.6%	7.4%	3.7%	2.5%	13.5%	40.9%
Hospital/Medical	10.4%	3.9%	6.7%	2.4%	1.2%	10.3%	24.6%
Transport	29.2%	3.1%	3.4%	1.2%	0.5%	5.1%	37.3%
Other	32.0%	5.6%	9.7%	6.3%	6.0%	22.0%	59.6%
Water	8.0%	1.4%	1.5%	1.0%	1.2%	3.7%	13.1%
Primary Production	31.9%	3.3%	5.0%	2.9%	4.5%	12.4%	47.6%
Infrastructure	14.2%	4.5%	10.2%	3.9%	4.1%	18.1%	36.9%
Total	25.9%	5.1%	8.0%	3.7%	4.5%	16.2%	47.2%

* Data tables on this page based on the 2018 data capture (limited to features where data coverage is greater than 90%), combining both urban and non-urban areas

Melbourne Metropolitan Region - Data Tables

Urban and Non-urban Areas

Tree Canopy Cover by Local Government

Region	Local Government	Trees 3 to 10m (ha)	Trees 10 to 15m (ha)	Trees 15m plus (ha)	Total Trees (ha)	Trees 3 to 10m (%)	Trees 10 to 15m (%)	Trees 15m plus (%)	Total Trees (%)
Eastern	Yarra Ranges (S)	10,747	6,072	13,448	30,267	10.7%	6.0%	13.4%	30.0%
	Manningham (C)	1,493	914	744	3,151	13.2%	8.1%	6.6%	27.8%
	Maroondah (C)	703	331	252	1,287	11.5%	5.4%	4.1%	20.9%
	Whitehorse (C)	777	261	147	1,185	12.1%	4.1%	2.3%	18.4%
	Knox (C)	1,111	482	460	2,053	9.8%	4.2%	4.0%	18.0%
	Monash (C)	810	225	118	1,153	9.9%	2.8%	1.4%	14.2%
Eastern Total		15,642	8,284	15,169	39,096	10.9%	5.7%	10.5%	27.1%
Inner	Yarra (C)	179	67	44	290	9.1%	3.4%	2.3%	14.8%
	Port Phillip (C)	194	64	22	280	9.4%	3.1%	1.1%	13.5%
	Melbourne (C)	219	113	79	411	5.9%	3.0%	2.1%	11.0%
Inner Total		592	245	145	981	7.6%	3.2%	1.9%	12.6%
Inner South East	Boroondara (C)	851	262	127	1,241	14.1%	4.4%	2.1%	20.6%
	Stonnington (C)	348	102	37	488	13.6%	4.0%	1.5%	19.0%
	Bayside (C)	467	103	40	610	12.6%	2.8%	1.1%	16.4%
	Glen Eira (C)	403	60	20	483	10.4%	1.5%	0.5%	12.5%
Inner South East Total		2,069	527	225	2,821	12.8%	3.3%	1.4%	17.4%
Northern	Nillumbik (S)	6,173	4,072	2,860	13,105	14.3%	9.4%	6.6%	30.4%
	Banyule (C)	740	324	236	1,300	11.8%	5.2%	3.8%	20.8%
	Darebin (C)	488	122	58	667	9.1%	2.3%	1.1%	12.5%
	Moreland (C)	395	89	35	519	7.8%	1.7%	0.7%	10.2%
	Whittlesea (C)	2,289	1,121	749	4,158	5.5%	2.7%	1.8%	10.0%
	Hume (C)	1,731	619	274	2,624	3.5%	1.3%	0.6%	5.3%
Northern Total		11,816	6,346	4,212	22,373	7.9%	4.2%	2.8%	14.9%
Southern	Mornington Peninsula (S)	8,664	3,539	3,073	15,276	12.0%	4.9%	4.2%	21.1%
	Cardinia (S)	5,959	3,577	6,420	15,956	7.3%	4.4%	7.8%	19.5%
	Frankston (C)	1,580	462	180	2,222	12.2%	3.6%	1.4%	17.2%
	Casey (C)	2,757	914	503	4,174	6.7%	2.2%	1.2%	10.2%
	Kingston (C) (Vic.)	643	155	70	868	7.0%	1.7%	0.8%	9.5%
	Greater Dandenong (C)	574	176	102	851	4.4%	1.4%	0.8%	6.6%
Southern Total		20,178	8,822	10,348	39,348	8.8%	3.8%	4.5%	17.1%
Western	Moonee Valley (C)	336	64	26	426	7.8%	1.5%	0.6%	9.9%
	Maribyrnong (C)	210	37	14	261	6.7%	1.2%	0.4%	8.4%
	Brimbank (C)	563	126	56	745	4.6%	1.0%	0.5%	6.0%
	Hobsons Bay (C)	309	57	16	383	4.8%	0.9%	0.3%	6.0%
	Melton (C)	1,254	439	160	1,853	2.5%	0.9%	0.3%	3.7%
	Wyndham (C)	839	207	95	1,141	1.7%	0.4%	0.2%	2.4%
Western Total		3,511	931	366	4,808	2.8%	0.7%	0.3%	3.8%
Total		53,808	25,155	30,465	109,427	8.0%	3.7%	4.5%	16.2%

Note:

* Data tables on this page based on the 2018 data capture (limited to features where data coverage is greater than 90%), combining both urban and non-urban areas.

* Partial data coverage only for some outer LGAs including - Cardinia, Melton, Whittlesea, Wyndham and Yarra Ranges.

Melbourne Metropolitan Region - Data Tables

Land Use and Vegetation - Urban Areas

Vegetation Area (ha)

Land Use	Grass (ha)	Shrubs (ha)	Trees 3 to 10m (ha)	Trees 10 to 15m (ha)	Trees 15m plus (ha)	Total Trees (ha)	Total Vegetation (%)	Total Land Area within Study (ha)
Residential	19,381	10,318	13,104	3,890	4,053	21,047	50,746	128,906
Commercial	1,566	238	323	137	80	541	2,345	10,550
Industrial	4,118	631	623	222	106	952	5,701	20,975
Parkland	13,221	2,691	4,151	2,051	2,147	8,348	24,260	38,114
Education	1,402	208	429	214	144	787	2,397	5,903
Hospital/Medical	46	17	30	11	5	45	108	439
Transport	340	36	39	14	6	59	435	1,166
Other	6,176	1,028	1,492	765	726	2,983	10,186	16,701
Water	21	4	3	1	2	5	31	504
Primary Production	8,845	786	1,233	724	1,272	3,229	12,859	25,520
Infrastructure	6,007	1,974	4,603	1,382	1,107	7,093	15,075	46,522
Total	61,123	17,931	26,030	9,411	9,648	45,089	124,143	295,300

Vegetation Cover (%)

Land Use	Grass (%)	Shrubs (%)	Trees 3 to 10m (%)	Trees 10 to 15m (%)	Trees 15m plus (%)	Total Trees (%)	Total Vegetation (%)
Residential	15.0%	8.0%	10.2%	3.0%	3.1%	16.3%	39.4%
Commercial	14.8%	2.3%	3.1%	1.3%	0.8%	5.1%	22.2%
Industrial	19.6%	3.0%	3.0%	1.1%	0.5%	4.5%	27.2%
Parkland	34.7%	7.1%	10.9%	5.4%	5.6%	21.9%	63.7%
Education	23.7%	3.5%	7.3%	3.6%	2.4%	13.3%	40.6%
Hospital/Medical	10.4%	3.9%	6.7%	2.4%	1.2%	10.3%	24.6%
Transport	29.2%	3.1%	3.4%	1.2%	0.5%	5.1%	37.3%
Other	37.0%	6.2%	8.9%	4.6%	4.3%	17.9%	61.0%
Water	4.2%	0.8%	0.5%	0.2%	0.3%	1.1%	6.1%
Primary Production	34.7%	3.1%	4.8%	2.8%	5.0%	12.7%	50.4%
Infrastructure	12.9%	4.2%	9.9%	3.0%	2.4%	15.2%	32.4%
Total	20.7%	6.1%	8.8%	3.2%	3.3%	15.3%	42.0%

* Data tables on this page based on the 2018 data capture (limited to features where data coverage is greater than 90%), limited to urban areas as defined by ABS Urban Centres and Localities 2016.

Melbourne Metropolitan Region - Data Tables

Urban Areas

Tree Canopy Cover by Local Government

Region	Local Government	Trees 3 to 10m (ha)	Trees 10 to 15m (ha)	Trees 15m plus (ha)	Total Trees (ha)	Trees 3 to 10m (%)	Trees 10 to 15m (%)	Trees 15m plus (%)	Total Trees (%)
Eastern	Yarra Ranges (S)	3,071	1,835	4,431	9,338	12.1%	7.2%	17.4%	36.7%
	Manningham (C)	1,132	603	507	2,241	12.8%	6.8%	5.7%	25.4%
	Maroondah (C)	703	331	252	1,287	11.5%	5.4%	4.1%	20.9%
	Whitehorse (C)	777	261	147	1,185	12.1%	4.1%	2.3%	18.4%
	Knox (C)	970	380	312	1,662	9.5%	3.7%	3.1%	16.3%
	Monash (C)	810	225	118	1,153	9.9%	2.8%	1.4%	14.2%
Eastern Total		7,464	3,635	5,767	16,866	11.5%	5.6%	8.8%	25.9%
Inner	Yarra (C)	179	67	44	290	9.1%	3.4%	2.3%	14.8%
	Port Phillip (C)	194	64	22	280	9.4%	3.1%	1.1%	13.5%
	Melbourne (C)	219	113	79	411	5.9%	3.0%	2.1%	11.0%
Inner Total		592	245	145	981	7.6%	3.2%	1.9%	12.6%
Inner South East	Boroondara (C)	851	262	127	1,241	14.1%	4.4%	2.1%	20.6%
	Stonnington (C)	348	102	37	488	13.6%	4.0%	1.5%	19.0%
	Bayside (C)	467	103	40	610	12.6%	2.8%	1.1%	16.4%
	Glen Eira (C)	403	60	20	483	10.4%	1.5%	0.5%	12.5%
Inner South East Total		2,069	527	225	2,821	12.8%	3.3%	1.4%	17.4%
Northern	Nillumbik (S)	913	681	467	2,061	13.8%	10.3%	7.0%	31.1%
	Banyule (C)	740	324	236	1,300	11.8%	5.2%	3.8%	20.8%
	Darebin (C)	488	122	58	667	9.1%	2.3%	1.1%	12.5%
	Moreland (C)	395	89	35	519	7.8%	1.7%	0.7%	10.2%
	Whittlesea (C)	582	190	122	894	5.2%	1.7%	1.1%	7.9%
	Hume (C)	989	313	123	1,425	4.4%	1.4%	0.6%	6.4%
Northern Total		4,107	1,719	1,040	6,866	7.2%	3.0%	1.8%	12.1%
Southern	Cardinia (S)	874	510	1,163	2,548	8.5%	5.0%	11.4%	24.9%
	Mornington Peninsula (S)	4,082	1,043	554	5,679	15.7%	4.0%	2.1%	21.8%
	Frankston (C)	1,580	462	180	2,222	12.2%	3.6%	1.4%	17.2%
	Casey (C)	1,726	491	232	2,449	7.0%	2.0%	0.9%	9.9%
	Kingston (C) (Vic.)	643	155	70	868	7.0%	1.7%	0.8%	9.5%
	Greater Dandenong (C)	574	176	102	851	4.4%	1.4%	0.8%	6.6%
Southern Total		9,480	2,836	2,300	14,616	9.9%	3.0%	2.4%	15.2%
Western	Moonee Valley (C)	336	64	26	426	7.8%	1.5%	0.6%	9.9%
	Maribyrnong (C)	210	37	14	261	6.7%	1.2%	0.4%	8.4%
	Brimbank (C)	563	126	56	745	4.6%	1.0%	0.5%	6.0%
	Hobsons Bay (C)	309	57	16	383	4.8%	0.9%	0.3%	6.0%
	Wyndham (C)	500	82	28	609	3.5%	0.6%	0.2%	4.2%
	Melton (C)	402	82	31	515	3.2%	0.7%	0.2%	4.1%
Western Total		2,320	448	171	2,939	4.4%	0.8%	0.3%	5.5%
Total		26,030	9,411	9,648	45,089	8.8%	3.2%	3.3%	15.3%

Note:

* Data tables on this page based on the 2018 data capture (limited to features where data coverage is greater than 90%), limited to urban areas as defined by ABS Urban Centres and Localities 2016.

* Partial data coverage only for some outer LGAs including - Cardinia, Melton, Whittlesea, Wyndham and Yarra Ranges.

Melbourne Metropolitan Region - Data Tables

Land Use and Vegetation - Non-urban areas

Vegetation Area (ha)

Land Use	Grass (ha)	Shrubs (ha)	Trees 3 to 10m (ha)	Trees 10 to 15m (ha)	Trees 15m plus (ha)	Total Trees (ha)	Total Vegetation (%)	Total Land Area within Study (ha)
Residential	3,121	380	699	376	383	1,457	4,959	10,342
Commercial	23	2	1	0	0	1	26	72
Industrial	618	50	50	18	9	77	745	2,037
Parkland	9,038	3,830	6,818	2,976	3,865	13,658	26,527	38,452
Education	27	5	12	6	4	22	54	97
Transport	0	0	0	-	-	0	0	1
Other	18,692	3,363	6,067	4,102	3,967	14,137	36,192	61,051
Water	268	48	50	35	42	128	444	3,115
Primary Production	78,814	8,213	12,530	7,238	11,189	30,957	117,984	249,405
Infrastructure	2,622	782	1,550	993	1,358	3,901	7,305	14,058
Total	113,224	16,673	27,778	15,744	20,816	64,338	194,235	378,628

Vegetation Cover (%)

Land Use	Grass (%)	Shrubs (%)	Trees 3 to 10m (%)	Trees 10 to 15m (%)	Trees 15m plus (%)	Total Trees (%)	Total Vegetation (%)
Residential	30.2%	3.7%	6.8%	3.6%	3.7%	14.1%	47.9%
Commercial	32.8%	2.1%	0.7%	0.0%	0.0%	0.8%	35.7%
Industrial	30.4%	2.4%	2.5%	0.9%	0.4%	3.8%	36.6%
Parkland	23.5%	10.0%	17.7%	7.7%	10.1%	35.5%	69.0%
Education	27.7%	5.3%	12.9%	6.1%	4.1%	23.1%	56.1%
Transport	16.5%	0.5%	0.4%	0.0%	0.0%	0.4%	17.3%
Other	30.6%	5.5%	9.9%	6.7%	6.5%	23.2%	59.3%
Water	8.6%	1.5%	1.6%	1.1%	1.4%	4.1%	14.3%
Primary Production	31.6%	3.3%	5.0%	2.9%	4.5%	12.4%	47.3%
Infrastructure	18.7%	5.6%	11.0%	7.1%	9.7%	27.7%	52.0%
Total	29.9%	4.4%	7.3%	4.2%	5.5%	17.0%	51.3%

* Data tables on this page based on the 2018 data capture (limited to features where data coverage is greater than 90%), limited to non-urban areas being those areas outside ABS Urban Centres and Localities 2016.

Melbourne Metropolitan Region - Data Tables

Non-urban Areas

Tree Canopy Cover by Local Government

Region	Local Government	Trees 3 to 10m (ha)	Trees 10 to 15m (ha)	Trees 15m plus (ha)	Total Trees (ha)	Trees 3 to 10m (%)	Trees 10 to 15m (%)	Trees 15m plus (%)	Total Trees (%)
Eastern	Manningham (C)	361	311	237	910	14.4%	12.4%	9.5%	36.3%
	Knox (C)	141	101	148	391	11.8%	8.5%	12.4%	32.7%
	Yarra Ranges (S)	7,676	4,236	9,017	20,930	10.2%	5.6%	12.0%	27.8%
Eastern Total		8,179	4,649	9,402	22,230	10.4%	5.9%	11.9%	28.1%
Northern	Nillumbik (S)	5,260	3,390	2,394	11,044	14.4%	9.3%	6.6%	30.3%
	Whittlesea (C)	1,707	931	627	3,264	5.7%	3.1%	2.1%	10.8%
	Hume (C)	742	305	151	1,199	2.8%	1.1%	0.6%	4.5%
Northern Total		7,709	4,626	3,171	15,507	8.2%	4.9%	3.4%	16.6%
Southern	Mornington Peninsula (S)	4,582	2,496	2,519	9,598	9.9%	5.4%	5.4%	20.7%
	Cardinia (S)	5,085	3,067	5,257	13,409	7.1%	4.3%	7.3%	18.7%
	Casey (C)	1,031	423	271	1,725	6.4%	2.6%	1.7%	10.6%
Southern Total		10,699	5,986	8,047	24,732	8.0%	4.5%	6.0%	18.4%
Western	Melton (C)	852	358	128	1,338	2.2%	0.9%	0.3%	3.5%
	Wyndham (C)	339	125	67	531	1.0%	0.4%	0.2%	1.6%
Western Total		1,191	483	195	1,869	1.7%	0.7%	0.3%	2.6%
Total		27,778	15,744	20,816	64,338	7.3%	4.2%	5.5%	17.0%

Note:

* Data tables on this page based on the 2018 data capture (limited to features where data coverage is greater than 90%), limited to non-urban areas being those areas outside ABS Urban Centres and Localities 2016.

* Partial data coverage only for some outer LGAs including - Cardinia, Melton, Whittlesea, Wyndham and Yarra Ranges.