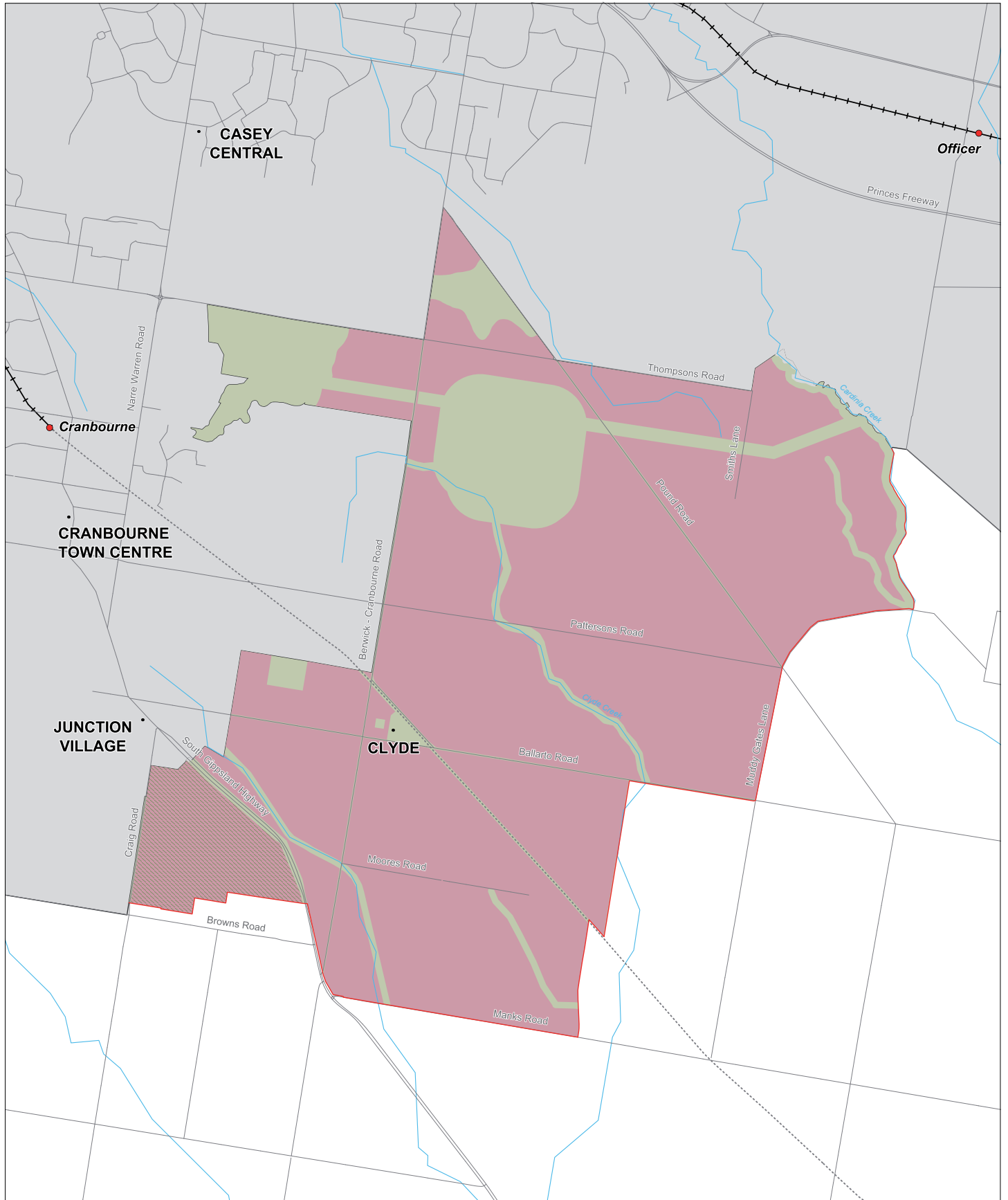


LAND USE INITIATIVE – MELBOURNE'S SOUTH-EAST



- Land within existing Urban Growth Boundary
- Amendment VC68 Urban Growth Boundary
- Non-Urban Land
- Land potentially suitable for urban development
- Development subject to delivery of biodiversity outcomes
- Rail Line and Stations
- Rail Line - disused
- Roads
- Rivers / Creeks
- Locality



0 500 1000 1500
Metres