



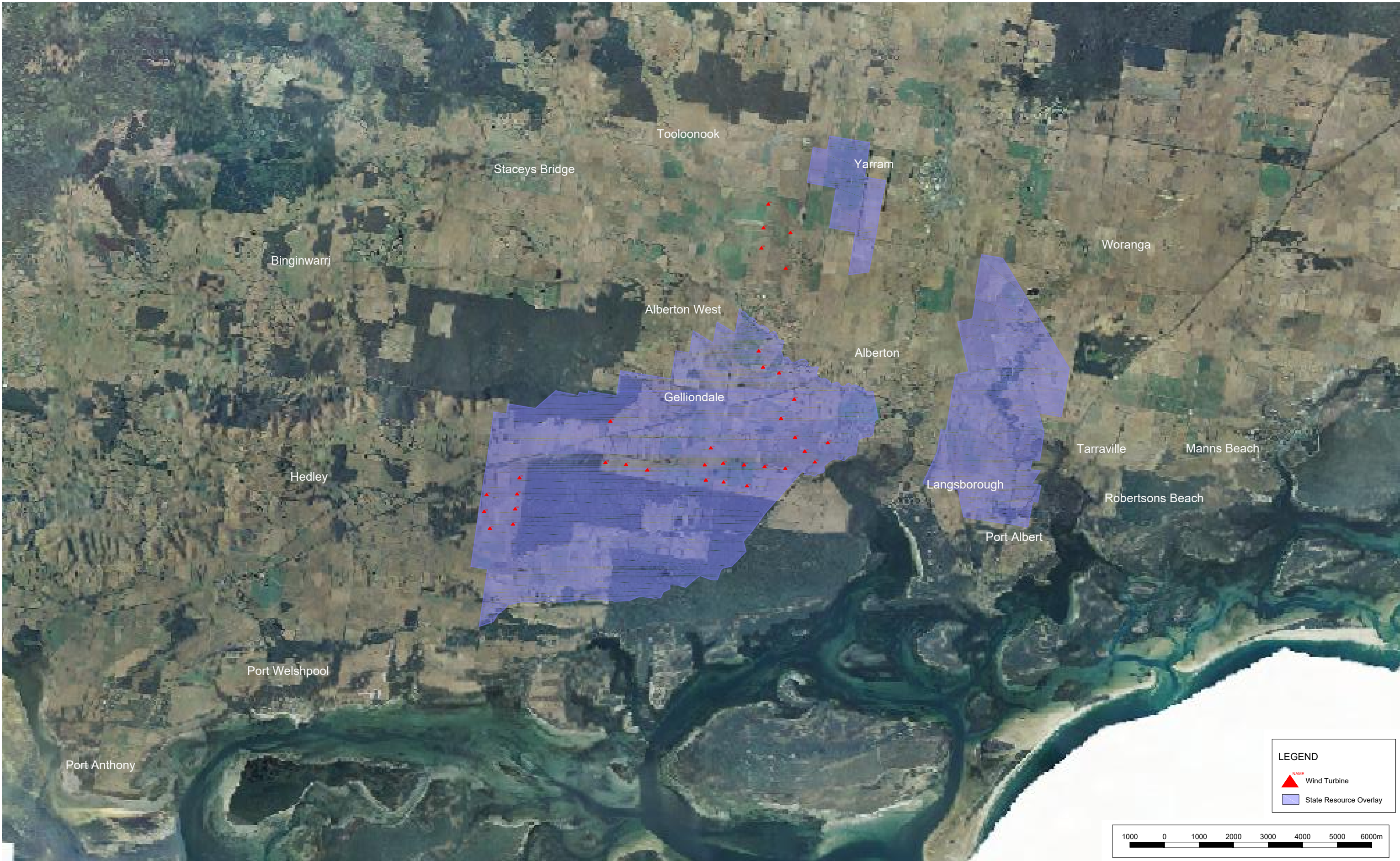
Other Overlay (7 June 2016 Post-Optimised Layout)

Alberton Wind Farm

Synergy Wind

**BW** Beveridge Williams  
development & environment consultants  
Melbourne ph : 03 9524 8888  
www.beveridgewilliams.com.au

01		20.07.17	Initial issue	CK	BS			Date: 26.07.17
02		26.07.17	Title block amended	CK	AB			Version No: 02
Version	Date	Description	Drafted	Approved	Version	Date	Description	Job No: 1600439
							Drafted	Approved
							Scale (A1): 1:50,000 (A3): 1:100,000	



State Resource Overlay (7 June 2016 Post-Optimised Layout)

Alberton Wind Farm

Synergy Wind



**Beveridge Williams**  
development & environment consultants

Melbourne ph : 03 9524 8888  
www.beveridgewilliams.com.au

Version	Date	Description	Drafted	Approved	Version	Date	Description	Drafted	Approved
01	20.07.17	Initial issue	CK	BS					
02	26.07.17	Title block amended	CK	AB					

Date: 26.07.17

Version No:

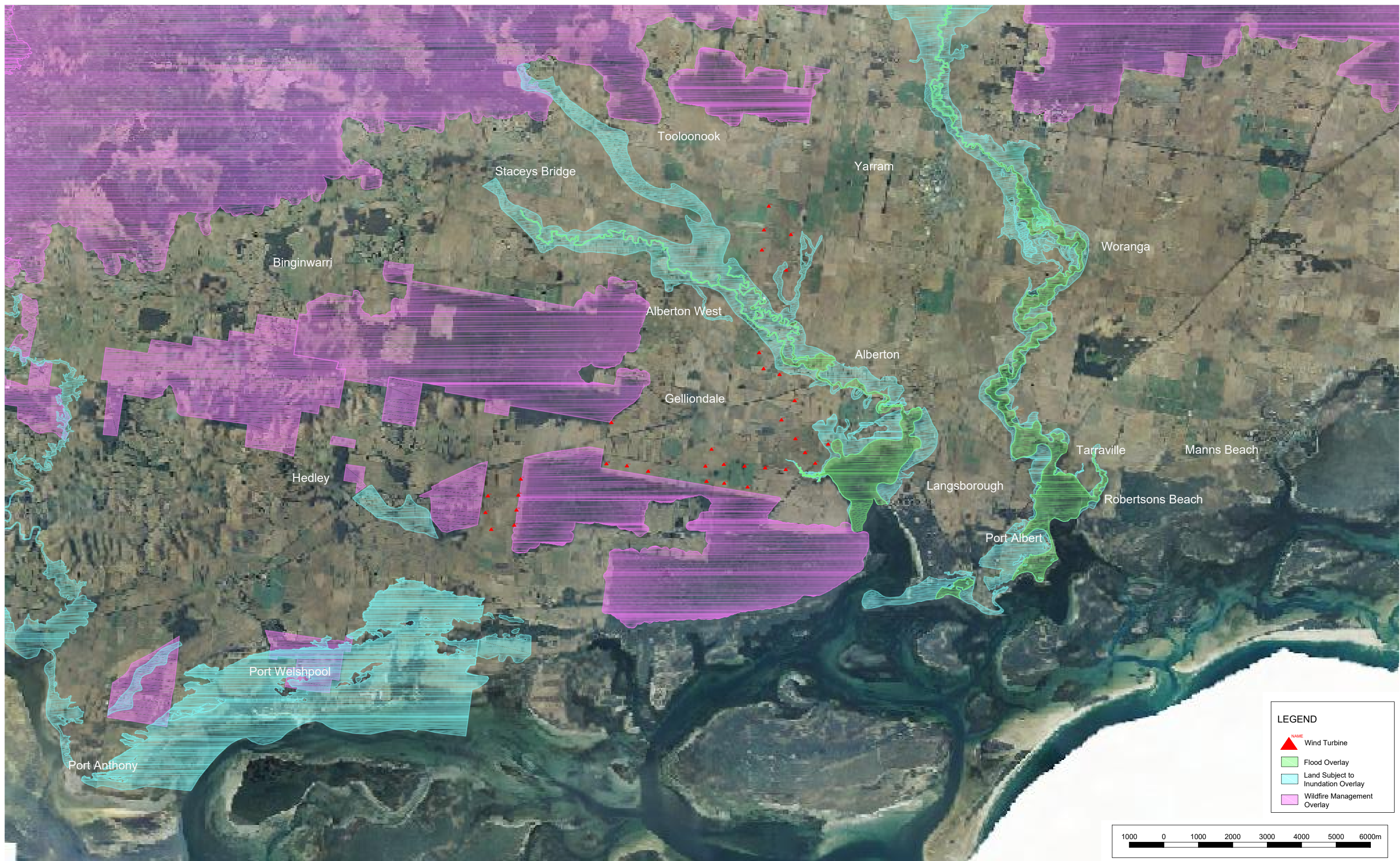
02

Job No: 1600439





Scale (A1): 1:50,000

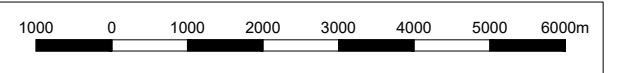
(A3): 1:100,000





**LEGEND**

-  Wind Turbine
-  Flood Overlay
-  Land Subject to Inundation Overlay
-  Wildfire Management Overlay



Land Management Overlay (7 June 2016 Post-Optimised Layout)

Alberton Wind Farm

Synergy Wind

**BW** Beveridge Williams  
development & environment consultants

Melbourne ph : 03 9524 8888  
www.beveridgewilliams.com.au

Version	Date	Description	Drafted	Approved	Version	Date	Description	Drafted	Approved
01	20.07.17	Initial issue	CK	BS					
02	26.07.17	Title block amended	CK	AB					

Date: 26.07.17  
Version No: 02  
Job No: 1600439  
Scale (A1): 1:50,000  
Scale (A3): 1:100,000





Heritage & Built Overlay (7 June 2016 Post-Optimised Layout)

Alberton Wind Farm

Synergy Wind



**Beveridge Williams**  
development & environment consultants

Melbourne ph : 03 9524 8888  
www.beveridgewilliams.com.au

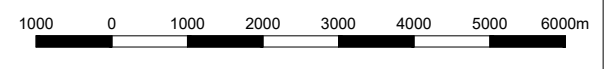
Version	Date	Description	Drafted	Approved	Version	Date	Description	Drafted	Approved
01	20.07.17	Initial issue	CK	BS					
02	26.07.17	Title block amended	CK	AB					

Date: 26.07.17  
Version No: 02  
Job No: 1600439  
Scale (A1): 1:50,000  
Scale (A3): 1:100,000



**LEGEND**

- ▲ NAME Wind Turbine
- Environmental Significance Overlay
- Vegetation Protection Overlay
- Significant Landscape Overlay



Environmental & Landscape Overlay (7 June 2016 Post-Optimised Layout)  
 Alberton Wind Farm  
 Synergy Wind

**BW** Beveridge Williams  
 development & environment consultants  
 Melbourne ph : 03 9524 8888  
 www.beveridgewilliams.com.au

Version	Date	Description	Drafted	Approved
01	20.07.17	Initial issue	CK	BS
02	26.07.17	Title block amended	CK	AB

Version	Date	Description	Drafted	Approved

Date: 26.07.17  
 Version No: 02  
 Job No: 1600439  
 Scale (A1): 1:50,000  
 (A3): 1:100,000

K:\JOBS DATA\1600439 - ALBERTON WIND FARM\_LAN\00\CAD\1600439\_LMP\_MGA55\_CURRENT.DWG



Public Land (7 June 2016 Post-Optimised Layout)

Alberton Wind Farm

Synergy Wind



**Beveridge Williams**  
development & environment consultants

Melbourne ph : 03 9524 8888  
www.beveridgewilliams.com.au

Version	Date	Description
01	20.07.17	Initial issue
02	26.07.17	Title block amended

Drafted	Approved
CK	BS
CK	AB

Version	Date	Description

Drafted	Approved

Date: 26.07.17

Version No:

**02**

Job No: 1600439

Scale (A1): 1:50,000

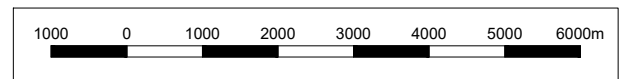
(A3): 1:100,000






**LEGEND**

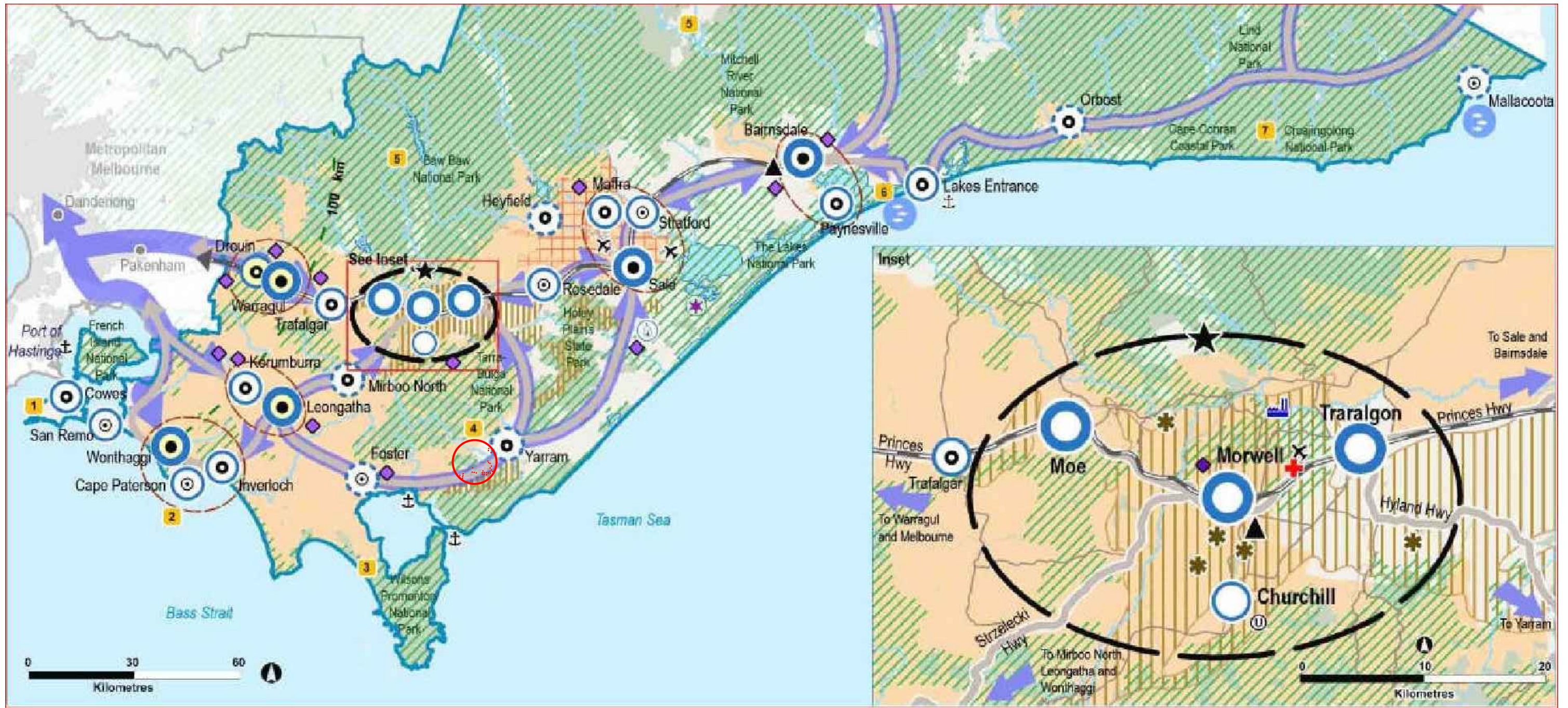
- ▲ NAME Wind Turbine
- Crown managed land



Version	Date	Description	Drafted	Approved	Version	Date	Description	Drafted	Approved
01	20.07.17	Initial issue	CK	BS					
02	26.07.17	Title block amended	CK	AB					

Date: 26.07.17  
 Version No: 02  
 Job No: 1600439  
 Scale (A1): 1:50,000  
 (A3): 1:100,000





SETTLEMENTS	ECONOMIC DEVELOPMENT
<ul style="list-style-type: none"> <li>Regional city - Latrobe City*</li> <li>Regional centre</li> <li>Town</li> <li>Small town</li> </ul> <p>*Latrobe City is the grouping of Traralgon, Morwell, Moe and Churchill</p> <ul style="list-style-type: none"> <li>Promote growth</li> <li>Support growth</li> <li>Sustainable change</li> <li>Designated identified growth centre in Plan Melbourne<sup>(1)</sup></li> <li>Sub regional network</li> <li>Areas within 100 km of central Melbourne</li> <li>Melbourne's urban area</li> </ul> <p>(1) Plan Melbourne (Chapter 6 – State of Cities) identifies Warragul/Drouin, Wonthaggi and Leongatha as peri-urban towns with potential to attract housing and population growth out of Melbourne.</p>	<ul style="list-style-type: none"> <li>Food manufacturing hubs</li> <li>Key agriculture and forestry land</li> <li>Macalister Irrigation District</li> <li>Brown coal reserves</li> <li>Power station</li> <li>Longford gas plant</li> <li>Australian Paper Maryvale</li> <li>Organic recycling facility</li> <li>University</li> <li>Hospital</li> <li>Fishing port</li> </ul>
CONNECTIVITY AND TRANSPORT	STRATEGIC TOURISM INVESTMENT AREAS
<ul style="list-style-type: none"> <li>Networks supporting movement and access</li> <li>Potential freight and logistics precincts</li> <li>Key road corridor</li> <li>Key rail corridor</li> <li>Arterial road (insert map only)</li> <li>Airport</li> <li>Port</li> </ul>	<ul style="list-style-type: none"> <li>Phillip Island</li> <li>Bunurong Coast</li> <li>Wilson's Promontory National Park</li> <li>Tarra-Bulga National Park</li> <li>Australian Alps</li> <li>Gippsland Lakes</li> <li>Croajingolong National Park</li> </ul>
ENVIRONMENT	
<ul style="list-style-type: none"> <li>Areas containing high value terrestrial habitat</li> <li>Public land</li> <li>Lakes</li> <li>Rivers</li> <li>Alberton Wind Farm</li> </ul>	

### Settlement Plans (7 June 2016 Post-Optimised Layout)

Alberton Wind Farm

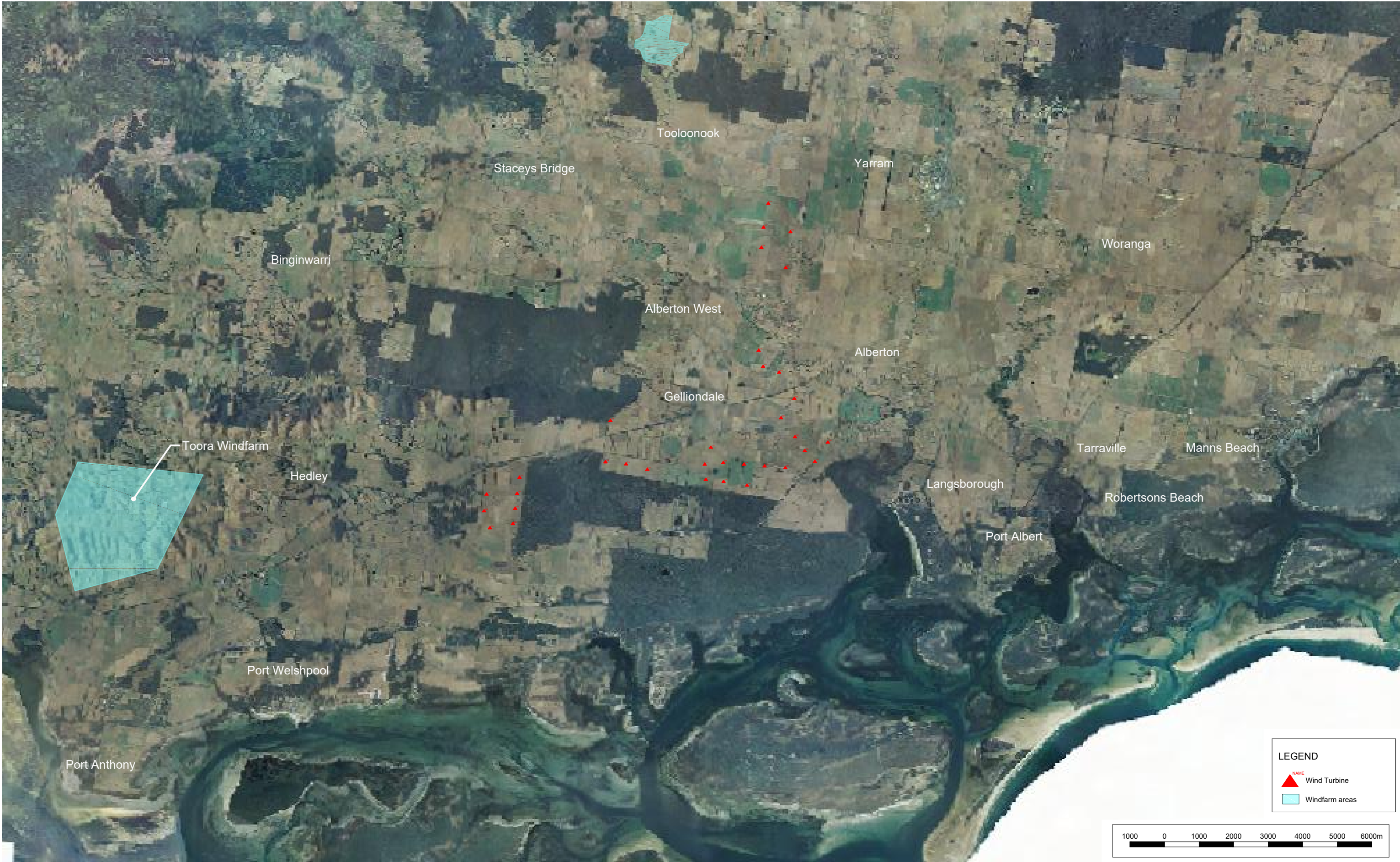
Synergy Wind



Version	Date	Description	Drafted	Approved
01	20.07.17	Initial issue	CK	BS
02	26.07.17	Title block amended	CK	AB

Date: 26.07.17  
Version No: 02  
Job No: 1600439  
Scale (A1): NTS  
Scale (A3): NTS





Regional Context Plan (7 June 2016 Post-Optimised Layout)

Alberton Wind Farm

Synergy Wind

**Beveridge Williams**  
development & environment consultants

Melbourne ph : 03 9524 8888  
www.beveridgewilliams.com.au

Version	Date	Description	Drafted	Approved	Version	Date	Description	Drafted	Approved
01	20.07.17	Initial issue	CK	BS					
02	26.07.17	Title block amended	CK	AB					

Date: 26.07.17  
Version No: **02**  
Job No: 1600439  
Scale (A1): 1:50,000  
Scale (A3): 1:100,000



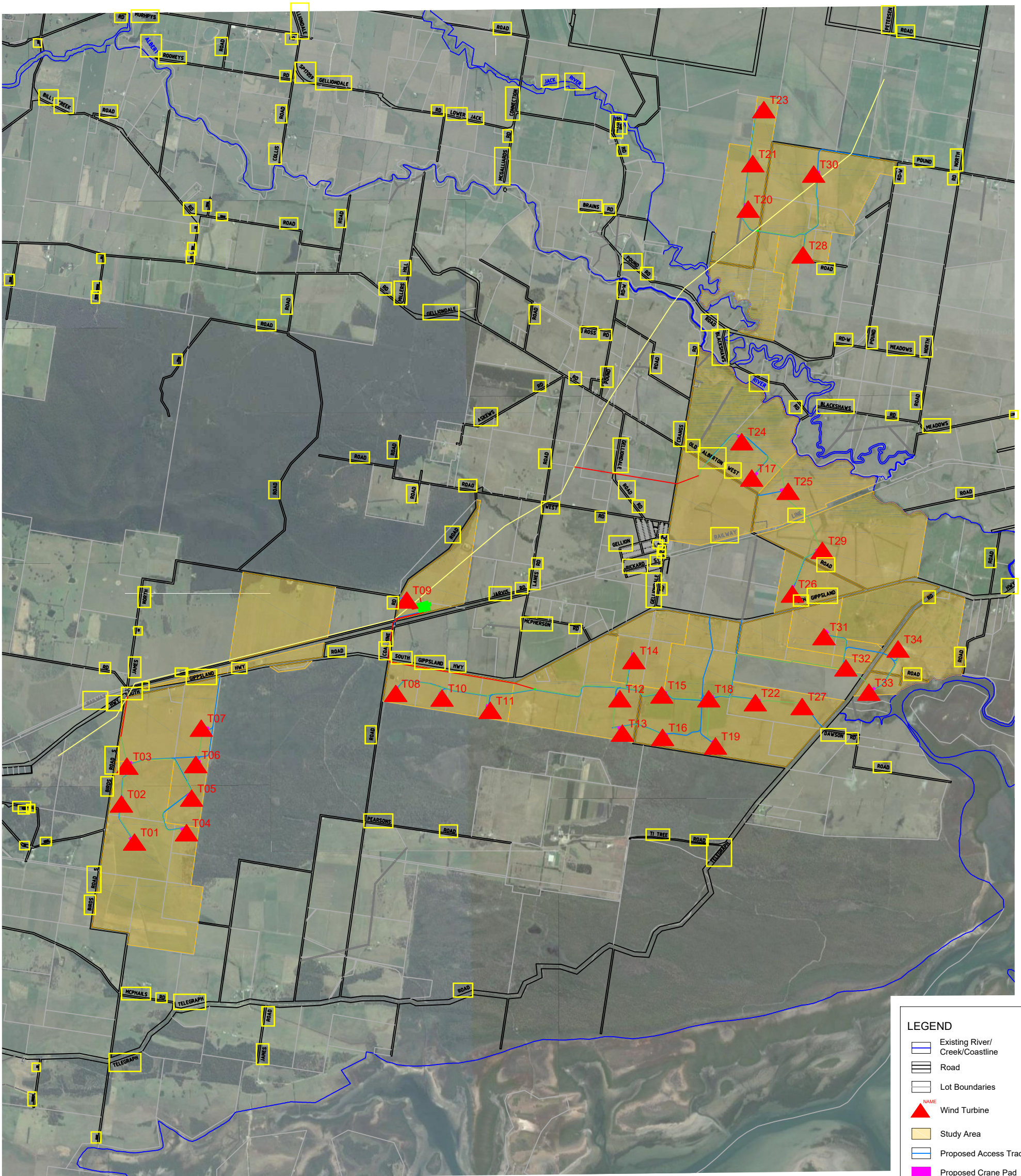
Site Context Plan (7 June 2016 Post-Optimised Layout)

Alberton Wind Farm

Synergy Wind

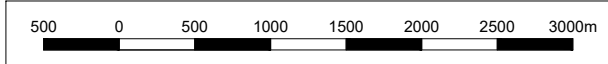


01		20.07.17	Initial issue	CK	BS			Date: 26.07.17	
02		26.07.17	Title block amended	CK	AB			Version No: 02	
Version		Date	Description	Drafted	Approved	Version	Date	Description	Job No: 1600439
									Scale (A1): 1:50,000
									(A3): 1:100,000



**LEGEND**

- Existing River/ Creek/Coastline
- Road
- Lot Boundaries
- Wind Turbine
- Study Area
- Proposed Access Track
- Proposed Crane Pad
- Proposed MV Cable
- Proposed OH Line
- Existing OH Line
- Proposed Substation



Site Plan with Infrastructure (7 June 2017 Post-Optimised Layout)  
 Alberton Wind Farm  
 Synergy Wind

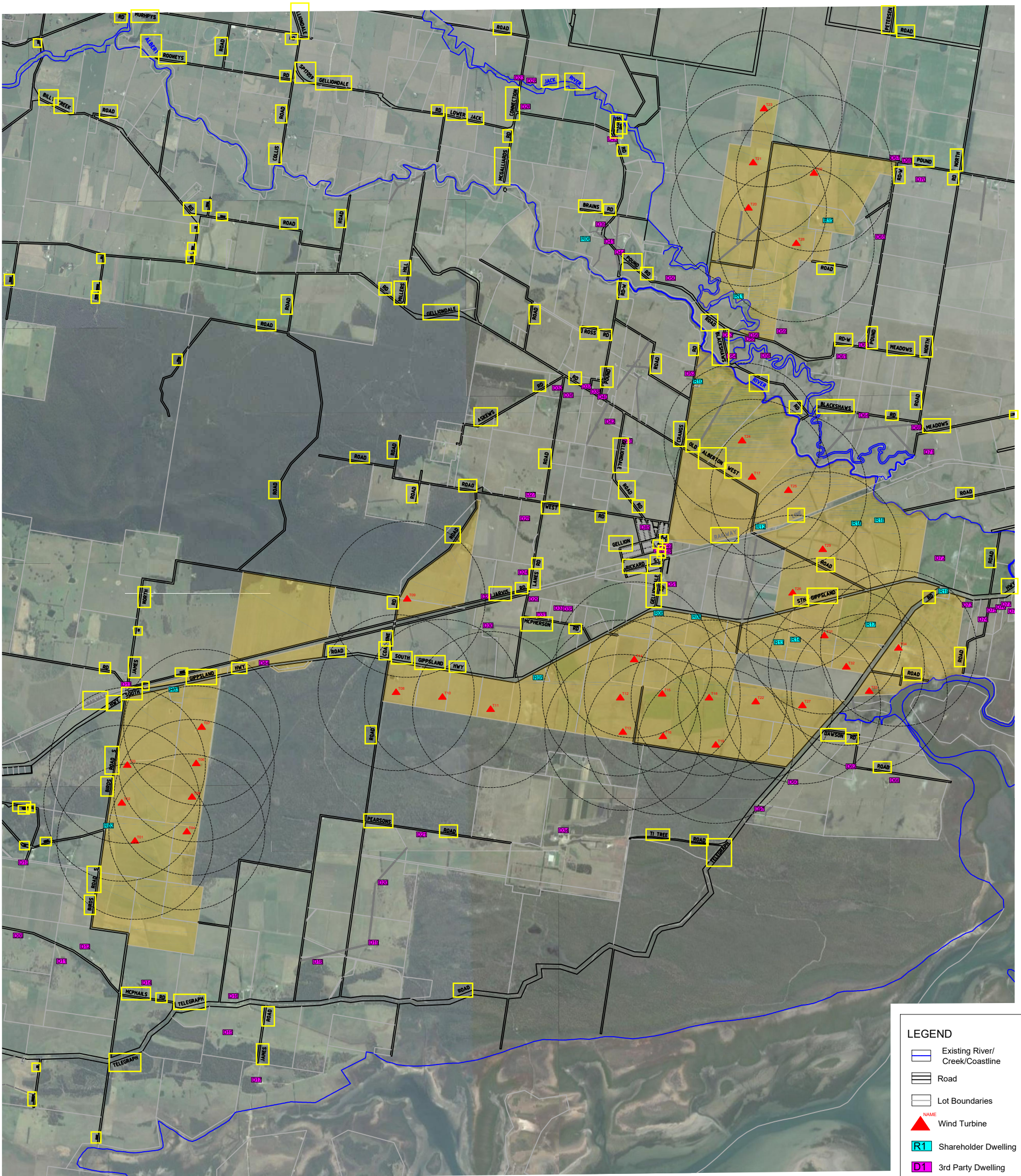
**BW** Beveridge Williams  
 development & environment consultants  
 Melbourne ph : 03 9524 8888  
 www.beveridgewilliams.com.au

Version	Date	Description	Drafted	Approved
01	04.07.17	Initial issue	CK	BS
01a	15.08.17	Aerial images amended	CK	BS

Version	Date	Description	Drafted	Approved

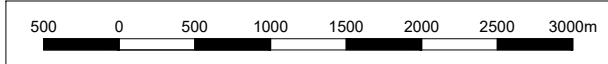
Date: 15.08.17  
 Version No: 01a  
 Job No: 1600439  
 Scale (A1): 1:25,000  
 (A3): 1:50,000

K:\JOBS DATA\1600439 - ALBERTON WIND FARM\_LAN\00\CAD\1600439 LMP MGA55 CURRENT.DWG



**LEGEND**

- Existing River/Creek/Coastline
- Road
- Lot Boundaries
- Wind Turbine
- Shareholder Dwelling
- 3rd Party Dwelling
- Leased Areas
- 1km Radius (from wind turbine)



Dwelling Locations  
 Alberton Wind Farm  
 Synergy Wind

**BW** Beveridge Williams  
 development & environment consultants  
 Melbourne ph : 03 9524 8888  
 www.beveridgewilliams.com.au

Version	Date	Description	Drafted	Approved
01	01.02.17	Initial Issue		
02	24.04.17	Turbine locations updated, dwelling 30 amended		
03	15.06.17	Updated dwelling & turbine locations		
04	16.06.17	Updated turbine names		
05	15.09.17	Updated turbine locations		

Version	Date	Description	Drafted	Approved

Date: 15.09.17  
 Version No: **05**  
 Job No: 1600439  
 Scale (A1): 1:25,000  
 (A3): 1:50,000