

- Legend**
- Study Area
 - Cable route
- Ecological vegetation class**
- 136 Sedge Wetland
 - 16 Lowland Forest
 - 18 Riparian Forest
 - 191 Riparian Scrub
 - 3 Damp Sands Herb-rich Woodland
 - 48 Heathy Woodland

Figure 2.21 Modelled EVCs in the Study Area

0 0.25 0.5 0.75 1 1.25

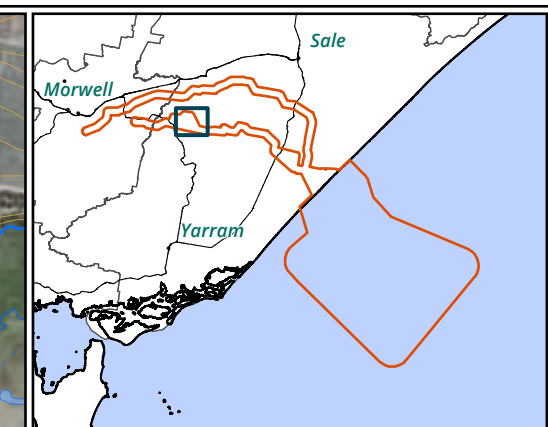
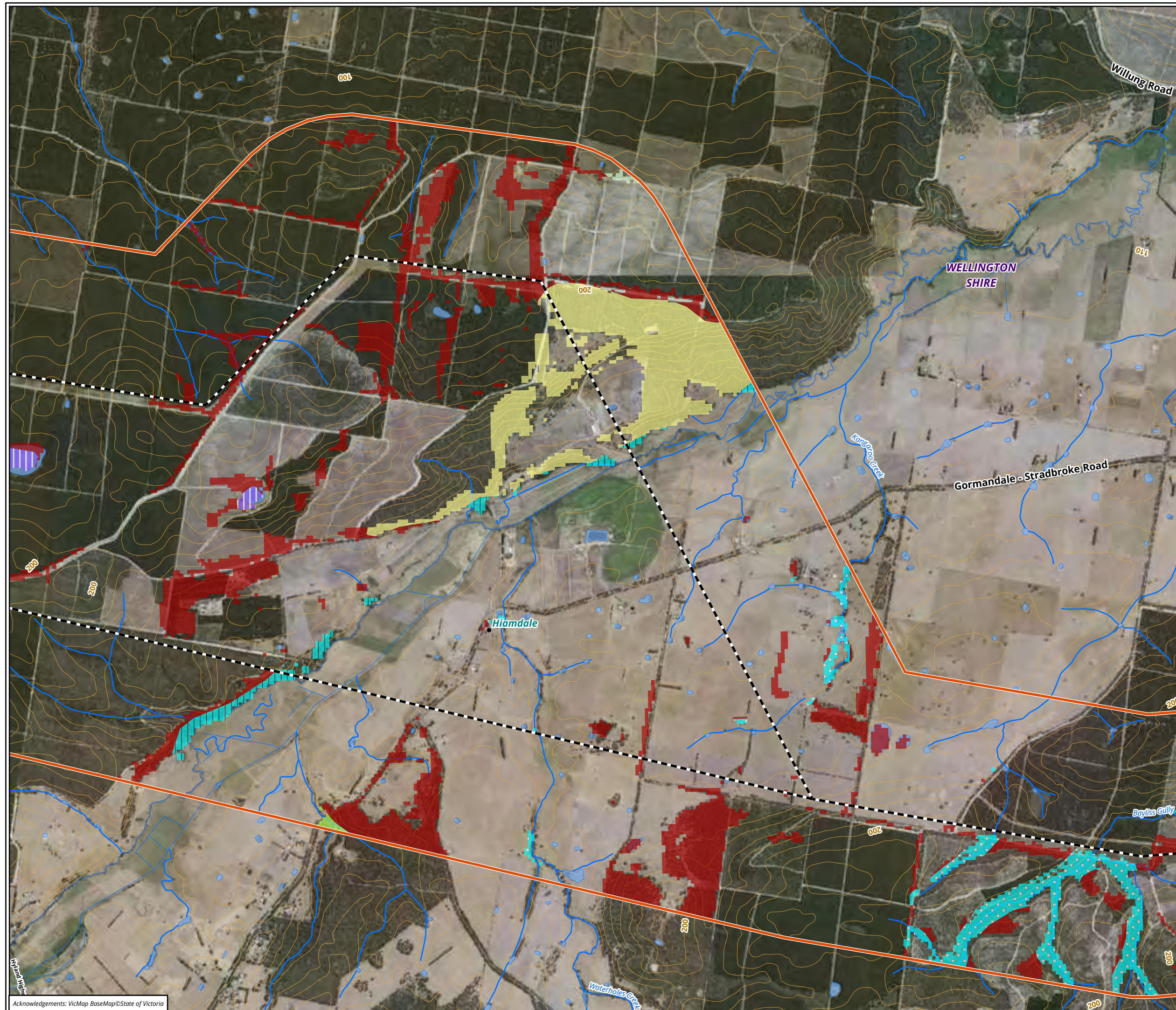
Kilometers

Scale: 1:20,000 @ A3

Coordinate System: GDA 1994 MGA Zone 55



Matter: 37595,
Date: 04 October 2022 ,
Prepared for: JB, Prepared by: MK, Last edited by: sblades
Layout: 37595_F2_EVC
Project: P:\37500s\37595\Mapping\
37595_GG_OffshoreWind.aprx



- Legend**
- Study Area
 - Cable route
- Ecological vegetation class**
- 136 Sedge Wetland
 - 16 Lowland Forest
 - 191 Riparian Scrub
 - 29 Damp Forest
 - 48 Heathy Woodland
 - 55 Plains Grassy Woodland
 - 83 Swampy Riparian Woodland

Figure 2.22 Modelled EVCs in the Study Area

0 0.3 0.6 0.9 1.2 1.5

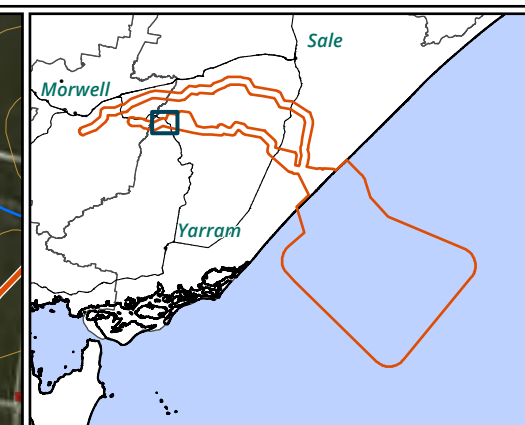
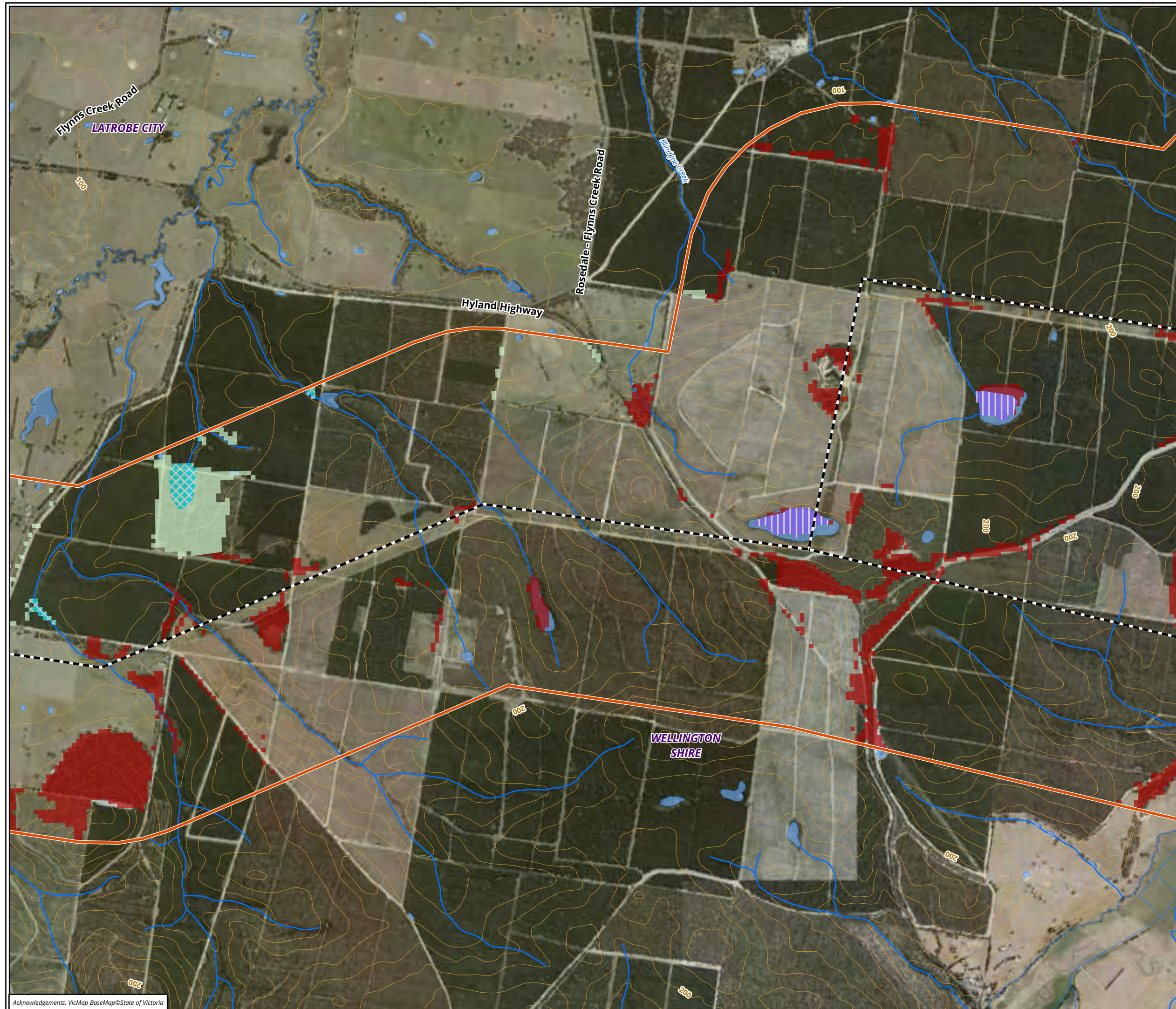
Kilometers

Scale: 1:25,000 @ A3

Coordinate System: GDA 1994 MGA Zone 55



Matter: 37595,
Date: 04 October 2022 ,
Prepared for: JB, Prepared by: MK, Last edited by: sblades
Layout: 37595_F2_EVC
Project: P:\37500s\37595\Mapping\
37595_GG_OffshoreWind.aprx



Legend

- Study Area
- Cable route
- Ecological vegetation class**
 - 136 Sedge Wetland
 - 16 Lowland Forest
 - 53 Swamp Scrub
 - 55 Plains Grassy Woodland
 - 83 Swampy Riparian Woodland

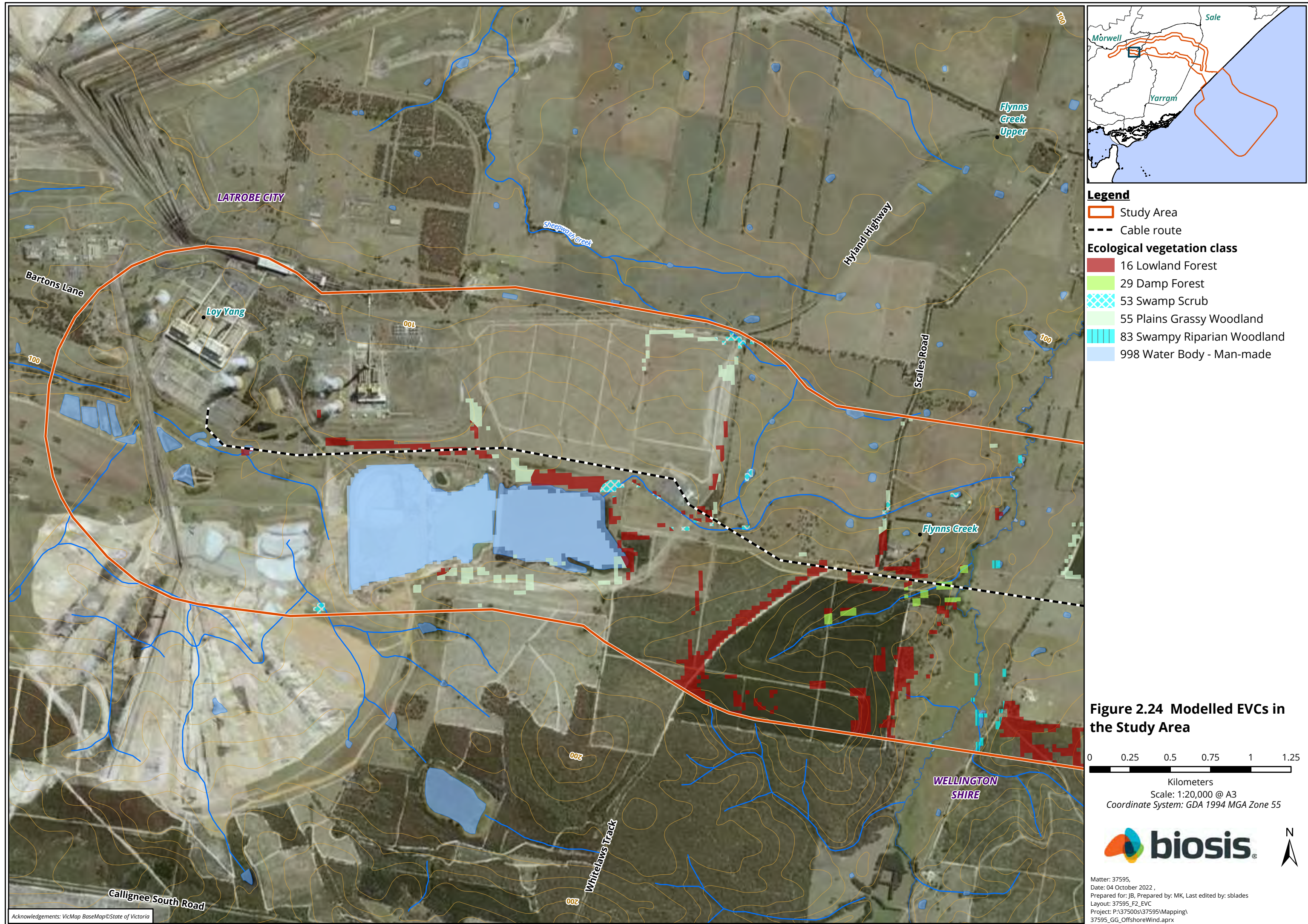
Figure 2.23 Modelled EVCs in the Study Area

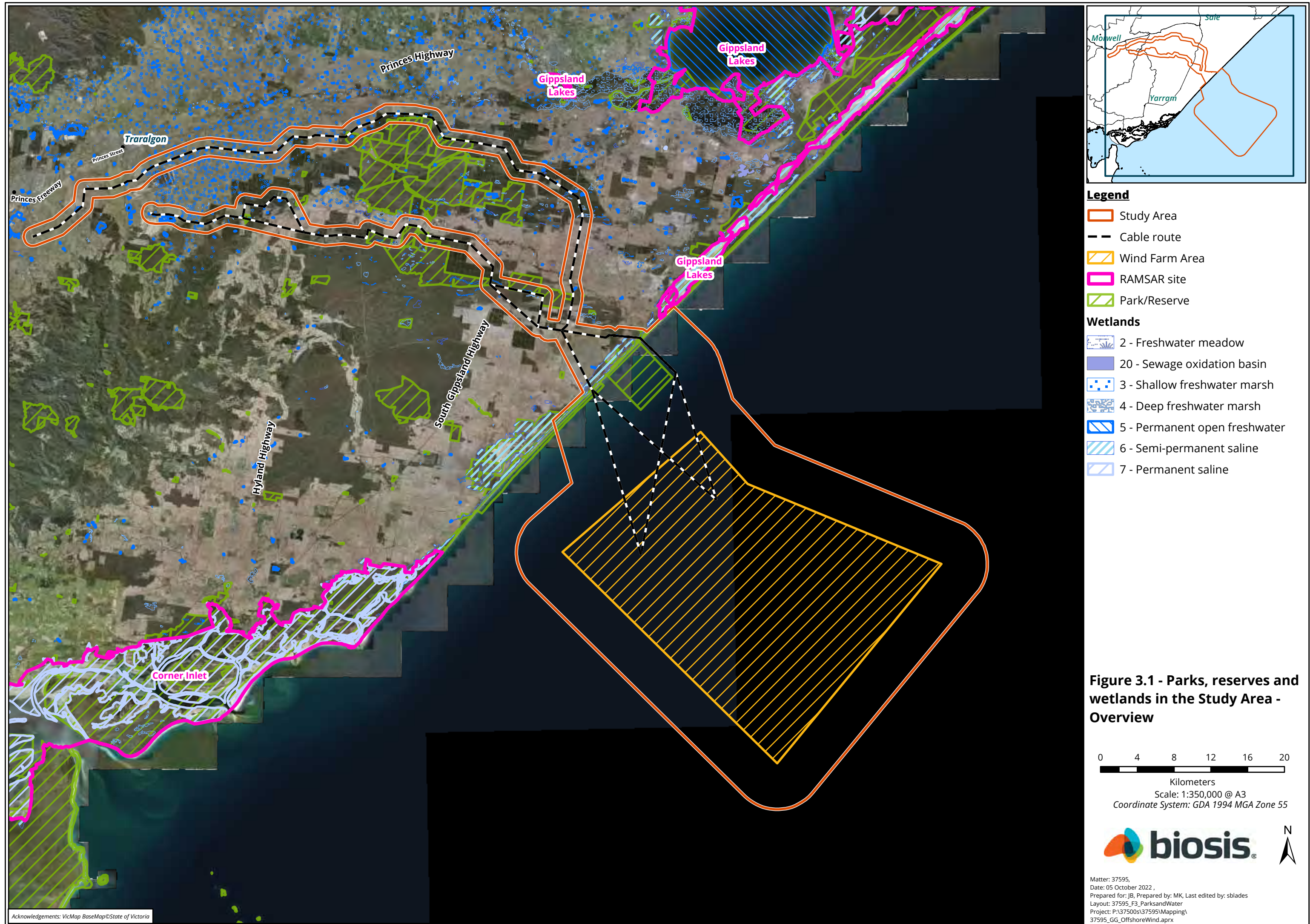
0 0.25 0.5 0.75 1 1.25

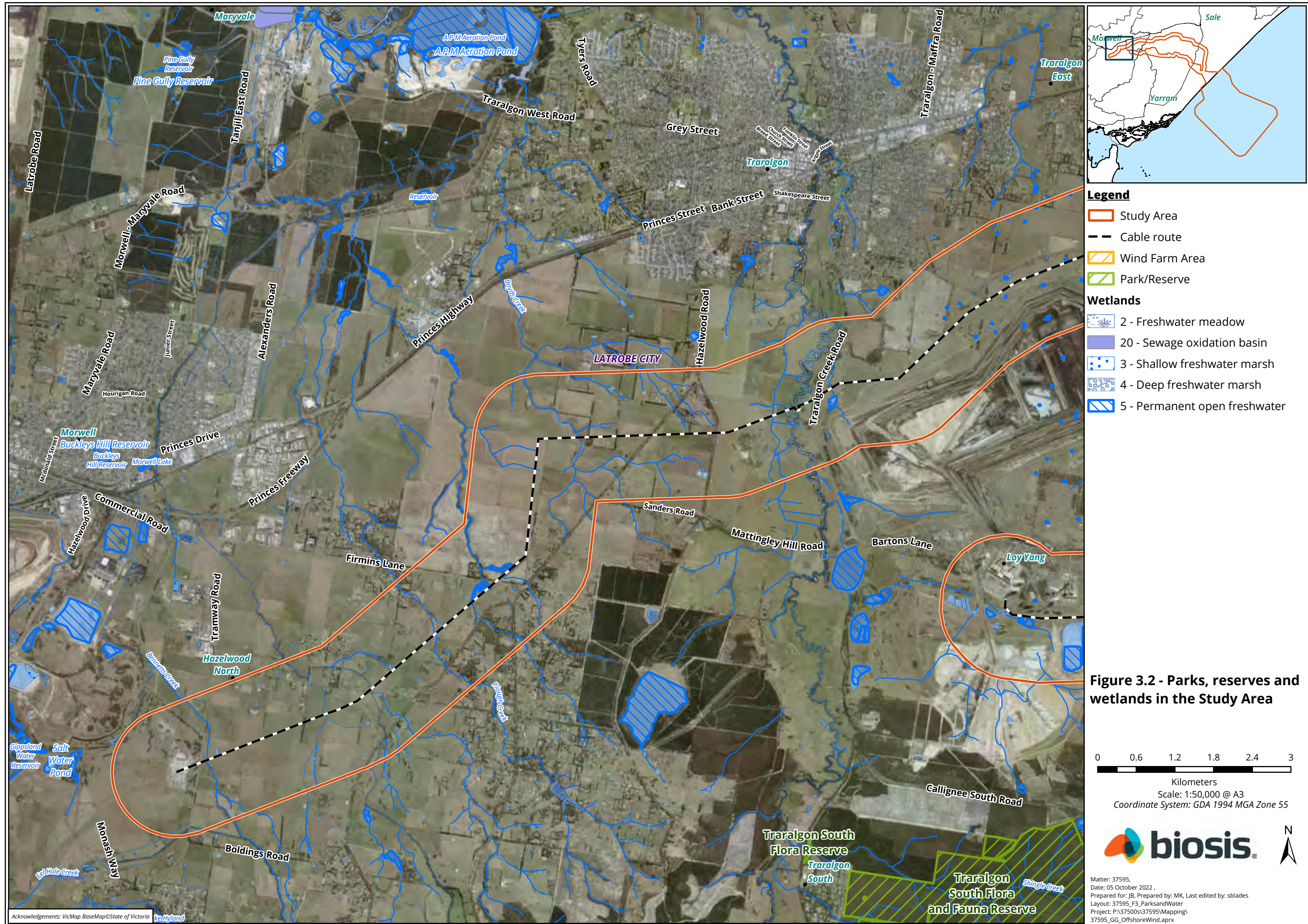
Kilometers
Scale: 1:20,000 @ A3
Coordinate System: GDA 1994 MGA Zone 55

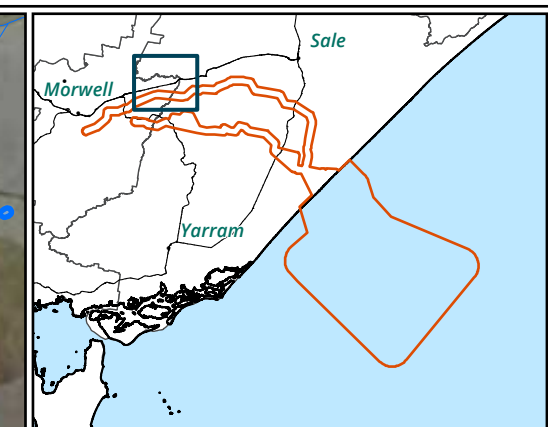
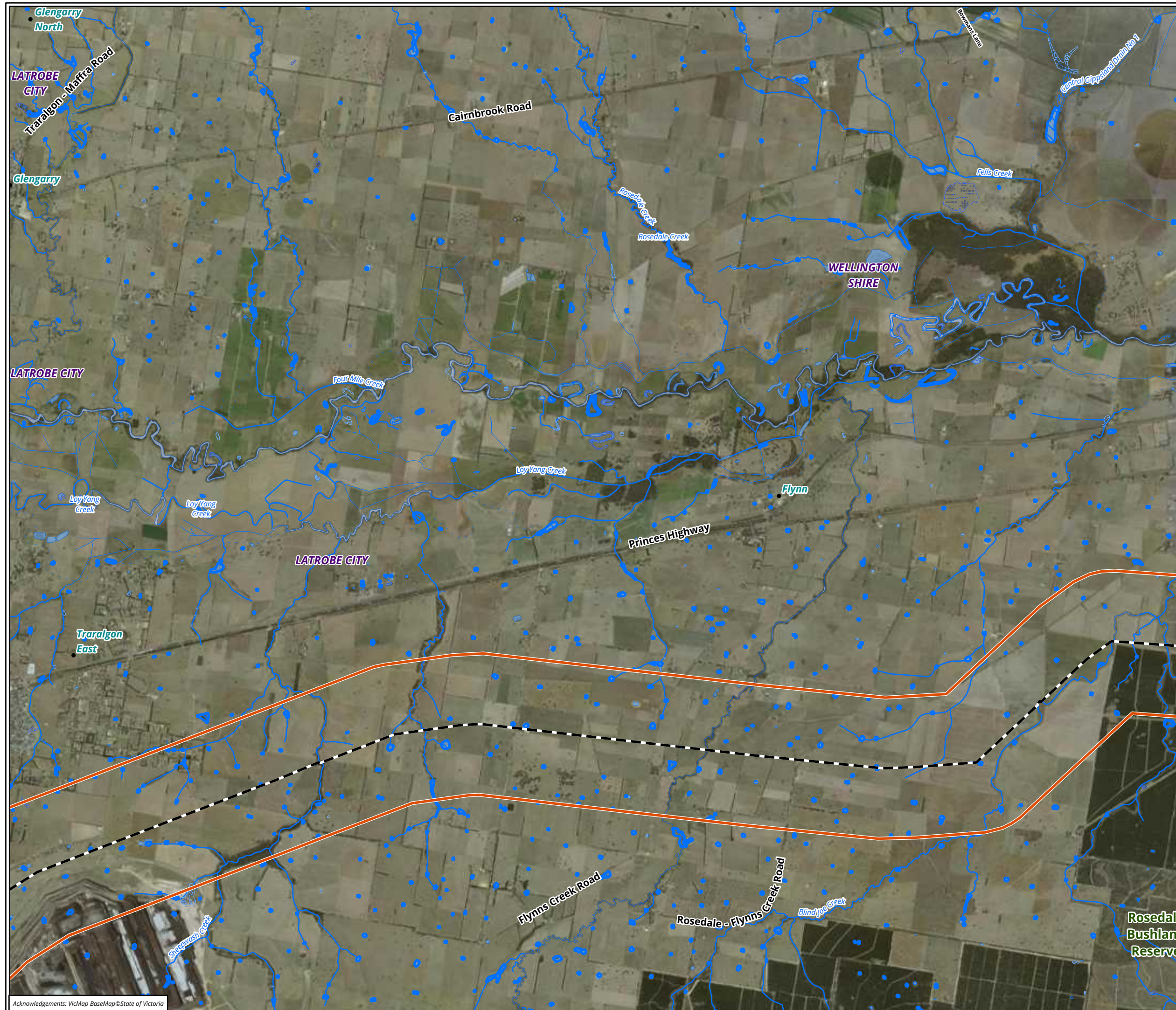


Matter: 37595,
Date: 04 October 2022 ,
Prepared for: JB, Prepared by: MK, Last edited by: sblades
Layout: 37595_F2_EVC
Project: P:\37500s\37595\Mapping\
37595_GG_OffshoreWind.aprx





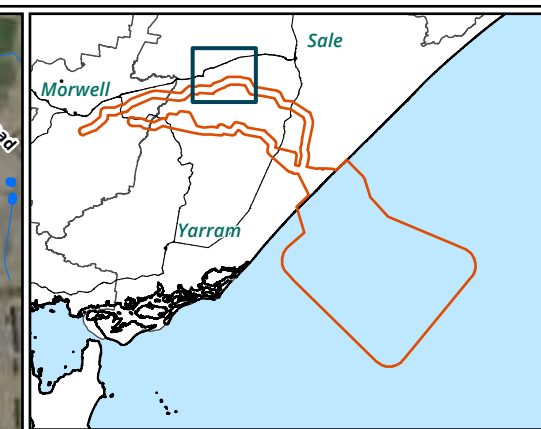




- Legend**
- Study Area
 - Cable route
 - Wind Farm Area
 - Park/Reserve
- Wetlands**
- 2 - Freshwater meadow
 - 20 - Sewage oxidation basin
 - 3 - Shallow freshwater marsh
 - 4 - Deep freshwater marsh
 - 5 - Permanent open freshwater

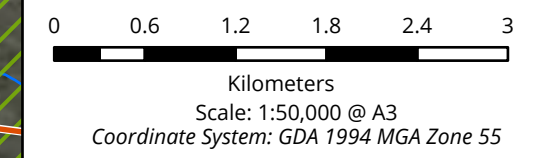
Figure 3.3 - Parks, reserves and wetlands in the Study Area

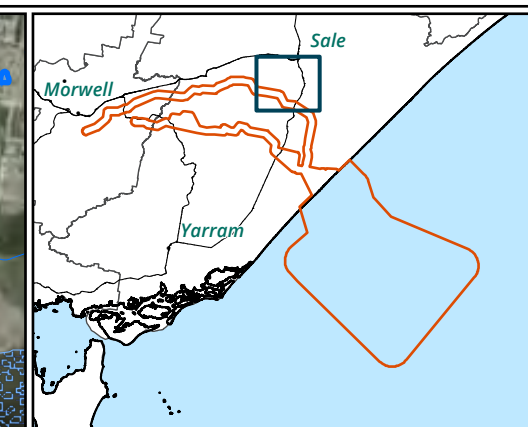
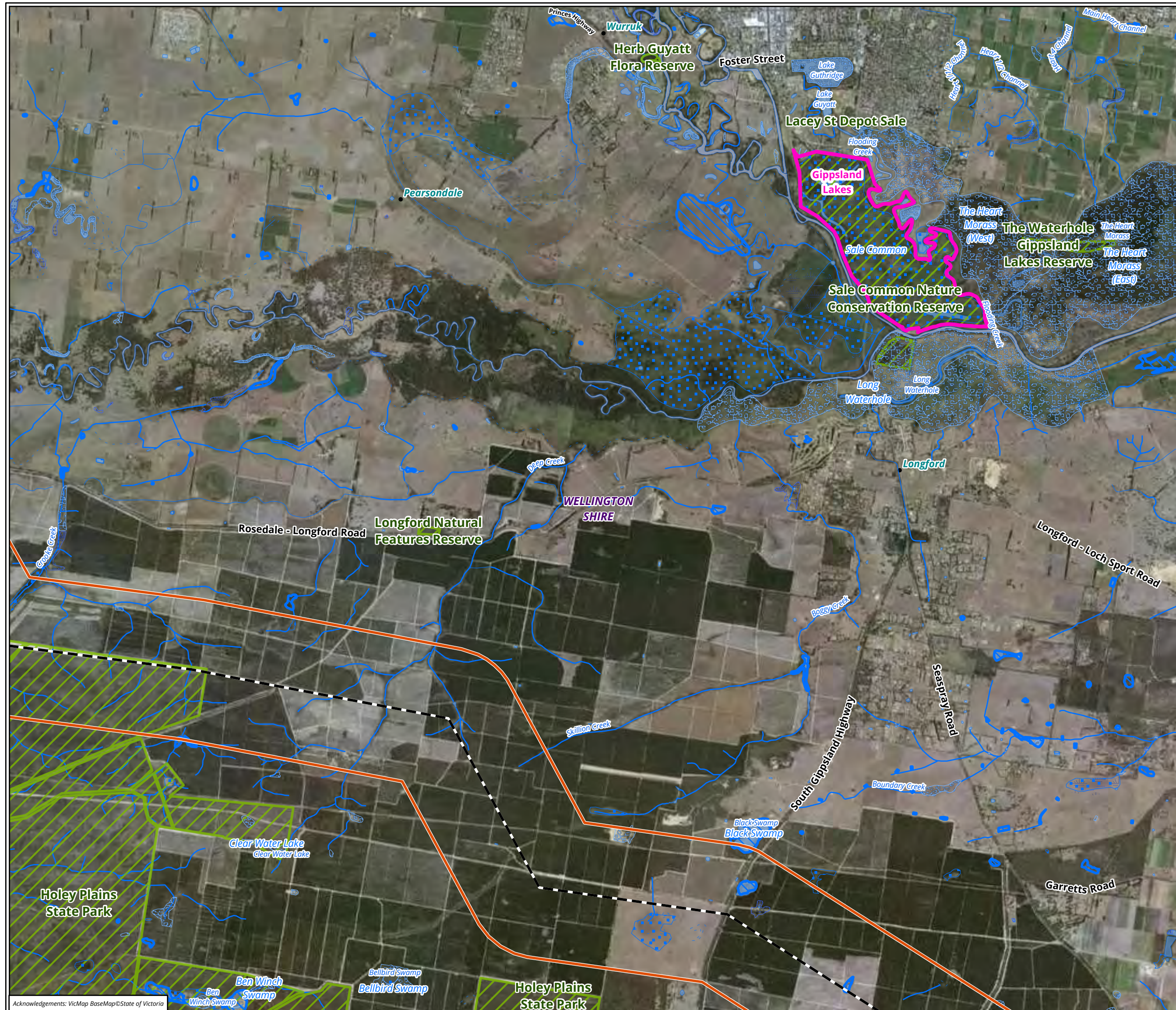
0 0.6 1.2 1.8 2.4 3
Kilometers
Scale: 1:50,000 @ A3
Coordinate System: GDA 1994 MGA Zone 55



- Legend**
- Study Area
 - Cable route
 - Wind Farm Area
 - Park/Reserve
- Wetlands**
- 2 - Freshwater meadow
 - 20 - Sewage oxidation basin
 - 3 - Shallow freshwater marsh
 - 4 - Deep freshwater marsh
 - 5 - Permanent open freshwater

Figure 3.4 - Parks, reserves and wetlands in the Study Area





Legend

- Study Area
 - Cable route
 - Wind Farm Area
 - RAMSAR site
 - Park/Reserve
- #### Wetlands
- 2 - Freshwater meadow
 - 3 - Shallow freshwater marsh
 - 4 - Deep freshwater marsh
 - 5 - Permanent open freshwater

Figure 3.5 - Parks, reserves and wetlands in the Study Area

0 0.6 1.2 1.8 2.4 3

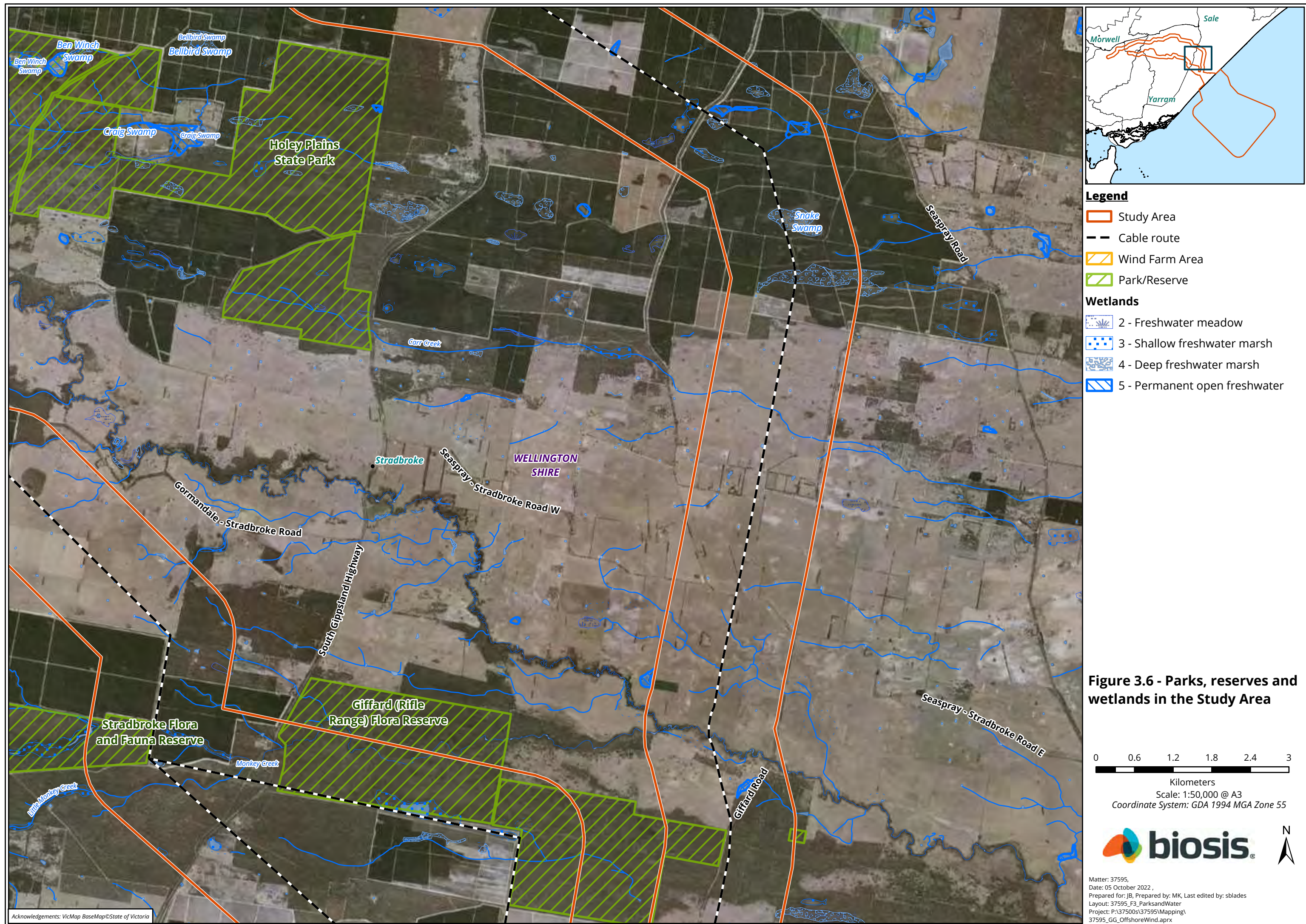
Kilometers

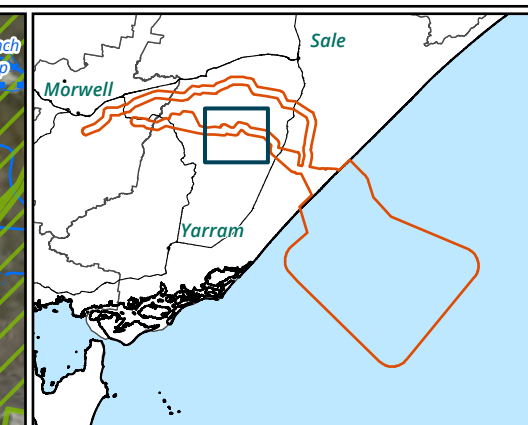
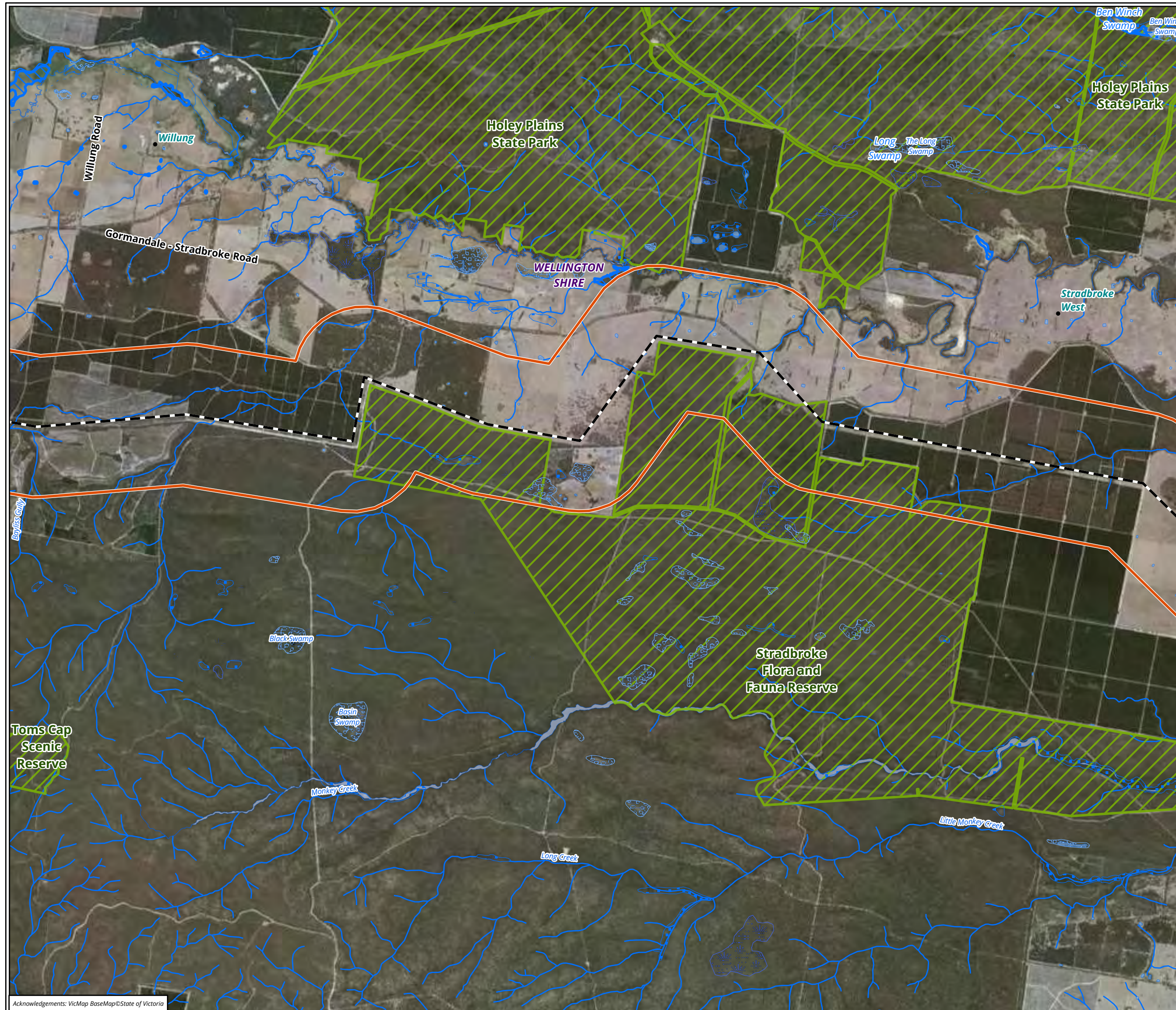
Scale: 1:50,000 @ A3

Coordinate System: GDA 1994 MGA Zone 55



Matter: 37595,
Date: 05 October 2022 ,
Prepared for: JB, Prepared by: MK, Last edited by: sblades
Layout: 37595_F3_ParksandWater
Project: P:\37500s\37595\Mapping\
37595_GG_OffshoreWind.aprx





Legend

- Study Area
 - Cable route
 - Wind Farm Area
 - Park/Reserve
- #### Wetlands
- 2 - Freshwater meadow
 - 3 - Shallow freshwater marsh
 - 4 - Deep freshwater marsh
 - 5 - Permanent open freshwater

Figure 3.7 - Parks, reserves and wetlands in the Study Area

0 0.6 1.2 1.8 2.4 3

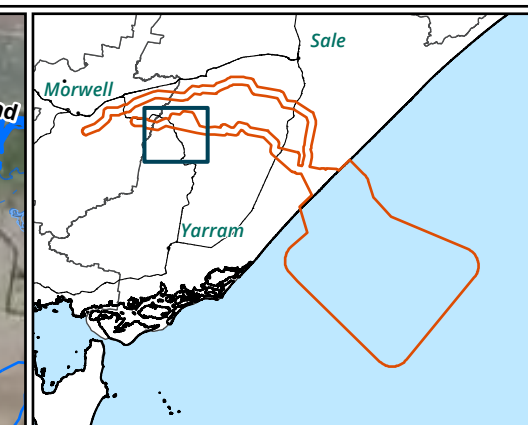
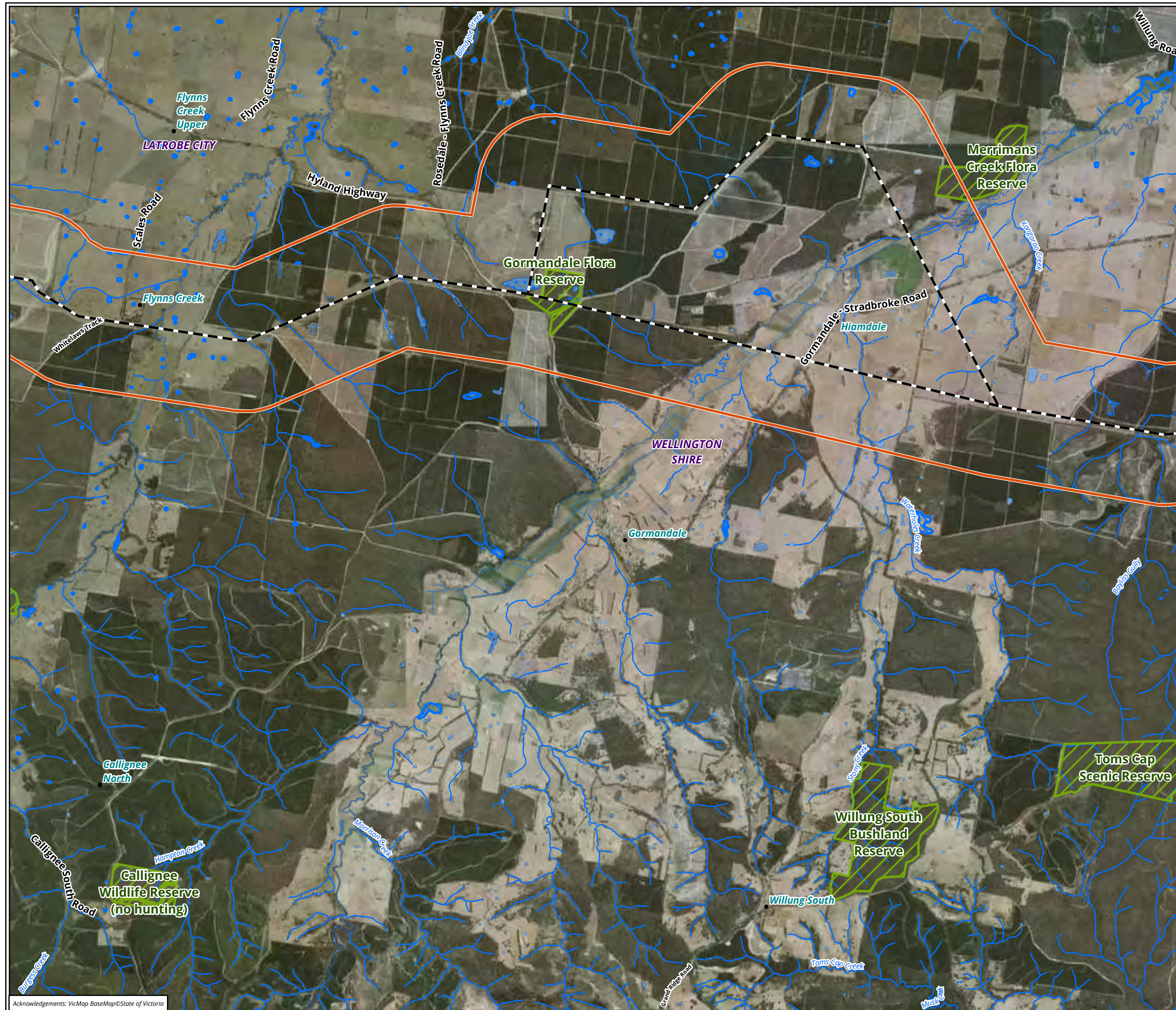
Kilometers

Scale: 1:50,000 @ A3

Coordinate System: GDA 1994 MGA Zone 55



Matter: 37595,
Date: 05 October 2022 ,
Prepared for: JB, Prepared by: MK, Last edited by: sblades
Layout: 37595_F3_ParksandWater
Project: P:\37500s\37595\Mapping\
37595_GG_OffshoreWind.aprx



Legend

- Study Area
 - Cable route
 - Wind Farm Area
 - Park/Reserve
- #### Wetlands
- 2 - Freshwater meadow
 - 3 - Shallow freshwater marsh
 - 4 - Deep freshwater marsh
 - 5 - Permanent open freshwater

Figure 3.8 - Parks, reserves and wetlands in the Study Area

0 0.6 1.2 1.8 2.4 3

Kilometers

Scale: 1:50,000 @ A3

Coordinate System: GDA 1994 MGA Zone 55



Matter: 37595,
Date: 05 October 2022 ,
Prepared for: JB, Prepared by: MK, Last edited by: sblades
Layout: 37595_F3_ParksandWater
Project: P:\37500s\37595\Mapping\
37595_GG_OffshoreWind.aprx

