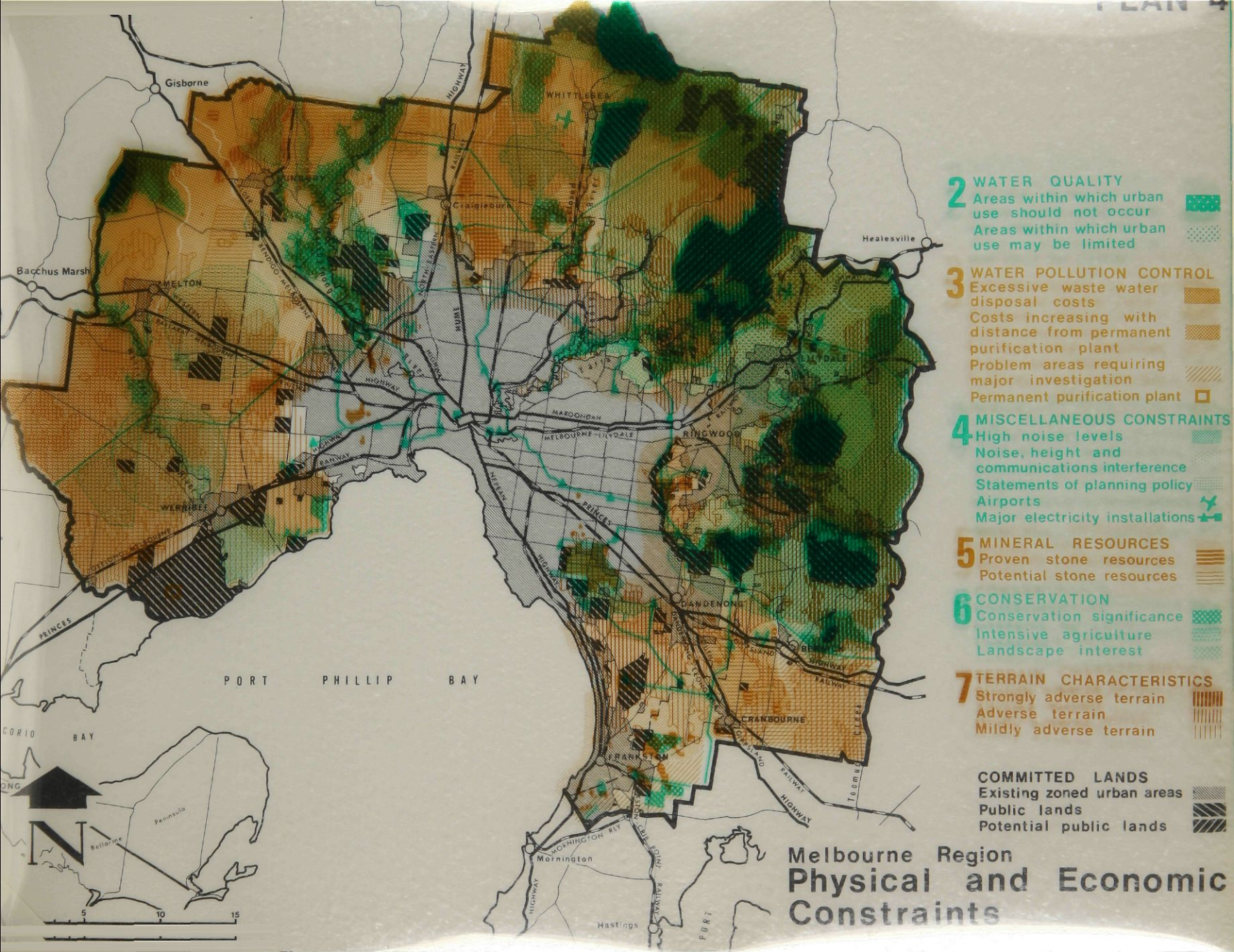
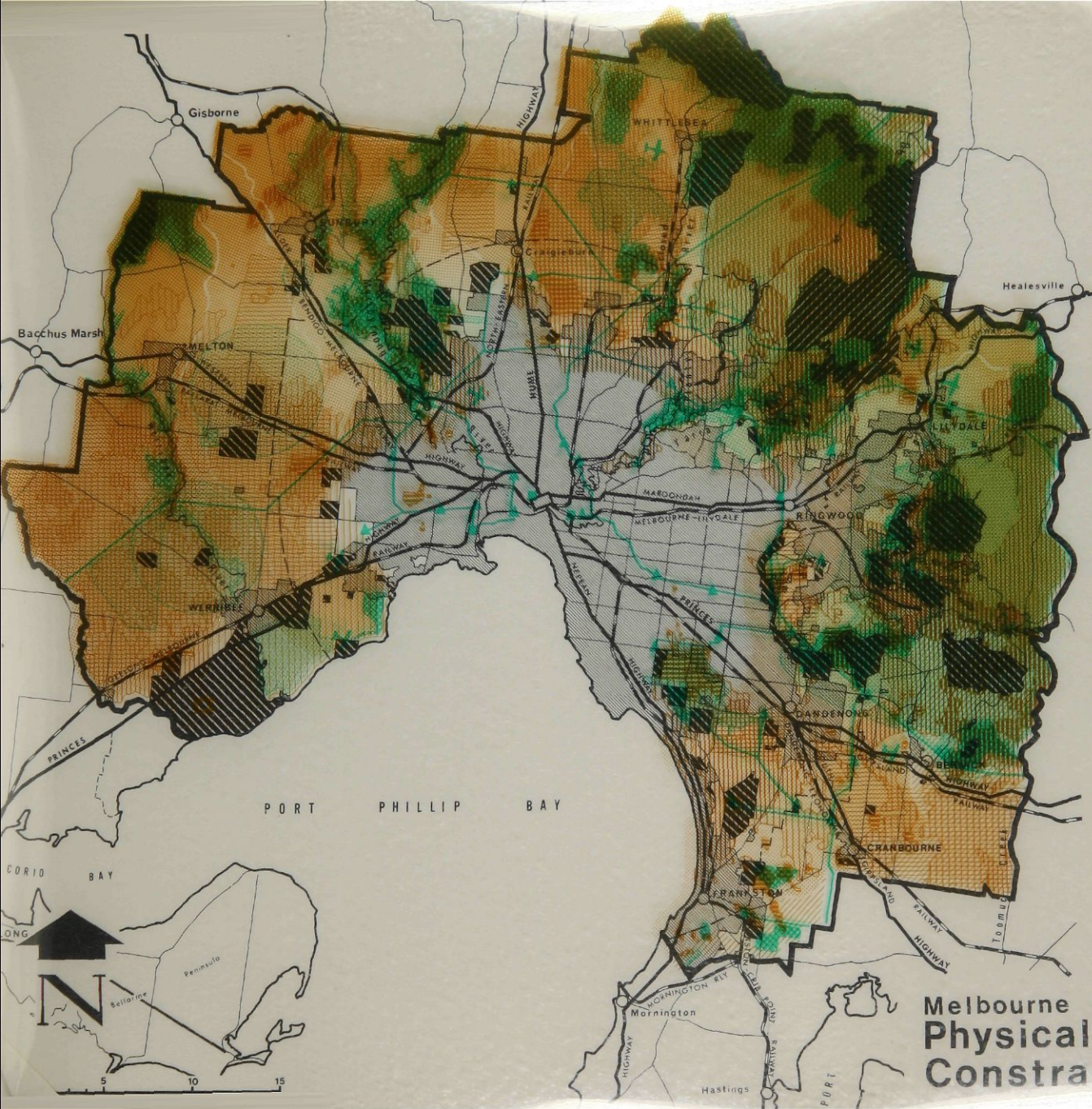


- 1 FLOOD CONTROL**
 Floodways and wetlands
 Very serious flooding problems and/or control costs possibly prohibitive
 Serious flooding problems major control work and costs
 Substantial flood problems high control costs
- 2 WATER QUALITY**
 Areas within which urban use should not occur
 Areas within which urban use may be limited
- 3 WATER POLLUTION CONTROL**
 Excessive waste water disposal costs
 Costs increasing with distance from permanent purification plant
 Problem areas requiring major investigation
 Permanent purification plant
- 4 MISCELLANEOUS CONSTRAINTS**
 High noise levels
 Noise, height and communications interference
 Statements of planning policy
 Airports
 Major electricity installations
- 5 MINERAL RESOURCES**
 Proven stone resources
 Potential stone resources
- 6 CONSERVATION**
 Conservation significance
 Intensive agriculture
 Landscape interest
- 7 TERRAIN CHARACTERISTICS**
 Strongly adverse terrain
 Adverse terrain
 Mildly adverse terrain
- COMMITTED LANDS**
 Existing zoned urban areas
 Public lands
 Potential public lands

Melbourne Region
 Physical and Economic
 Constraints





- 3 WATER POLLUTION CONTROL**
 Excessive waste water disposal costs
 Costs increasing with distance from permanent purification plant
 Problem areas requiring major investigation
 Permanent purification plant

- 4 MISCELLANEOUS CONSTRAINTS**
 High noise levels
 Noise, height and communications interference
 Statements of planning policy
 Airports
 Major electricity installations

- 5 MINERAL RESOURCES**
 Proven stone resources
 Potential stone resources

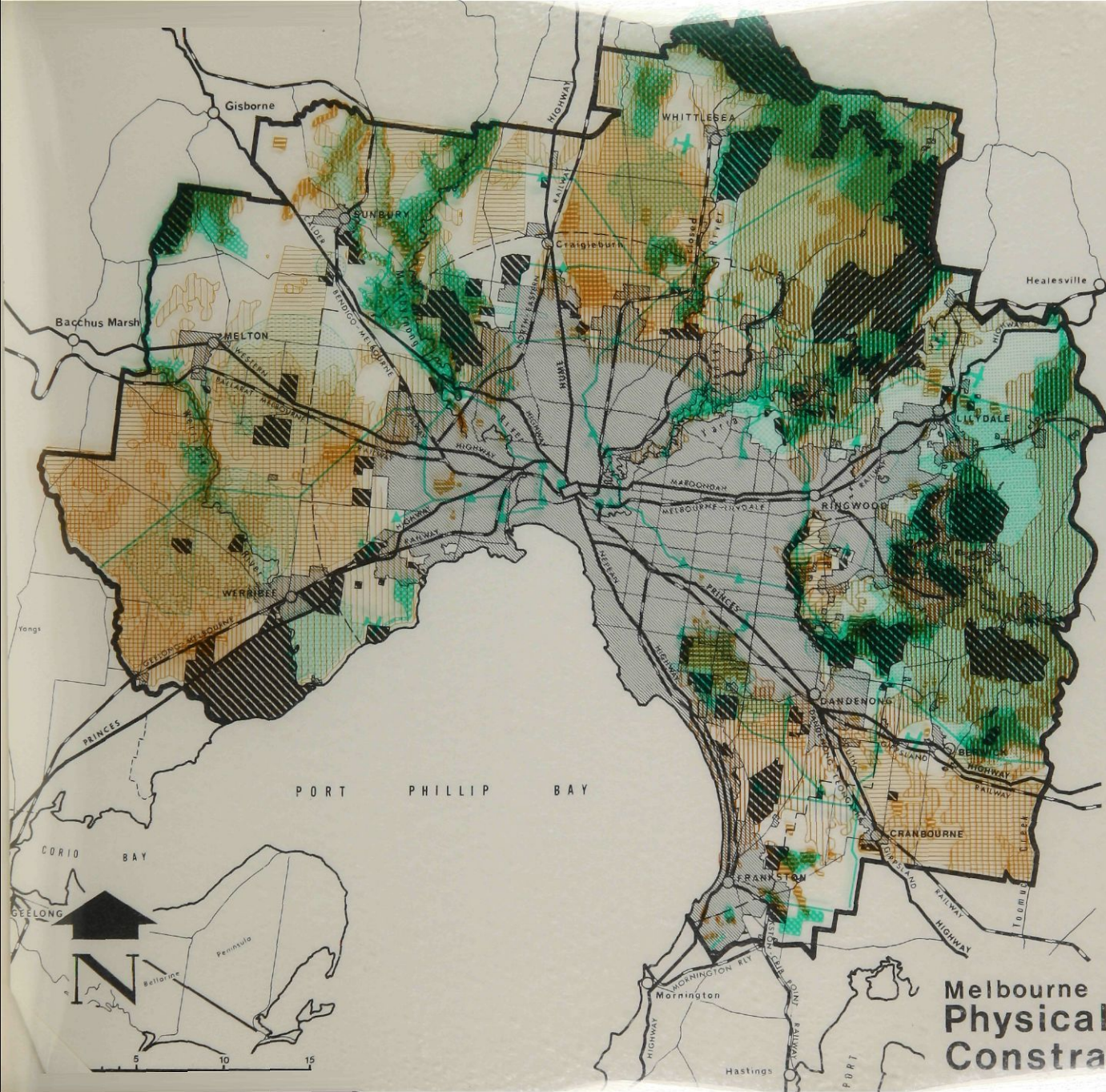
- 6 CONSERVATION**
 Conservation significance
 Intensive agriculture
 Landscape interest

- 7 TERRAIN CHARACTERISTICS**
 Strongly adverse terrain
 Adverse terrain
 Mildly adverse terrain

COMMITTED LANDS

- Existing zoned urban areas
 Public lands
 Potential public lands

**Melbourne Region
 Physical and Economic
 Constraints**



4 MISCELLANEOUS CONSTRAINTS

- High noise levels
- Noise, height and communications interference
- Statements of planning policy
- Airports
- Major electricity installations

5 MINERAL RESOURCES

- Proven stone resources
- Potential stone resources

6 CONSERVATION

- Conservation significance
- Intensive agriculture
- Landscape interest

7 TERRAIN CHARACTERISTICS

- Strongly adverse terrain
- Adverse terrain
- Mildly adverse terrain

COMMITTED LANDS

- Existing zoned urban areas
- Public lands
- Potential public lands

Melbourne Region Physical and Economic Constraints