

Planning and Environment Act 1987

LATROBE PLANNING SCHEME

LOY YANG POWER STATION & COAL MINE

Incorporated Document

April 2020

This document is an incorporated document in the Latrobe Planning Scheme pursuant to Section 6(2)(j) of the *Planning and Environment Act 1987*.

LATROBE PLANNING SCHEME LOY YANG POWER STATION & COAL MINE

1 Introduction

This document is an incorporated document in the Latrobe Planning Scheme, pursuant to section 6(2)(j) of the *Planning and Environment Act 1987*.

Pursuant to Clause 45.12 Specific Controls Overlay of the Latrobe Planning Scheme, the land identified in this Incorporated Document may be developed and used in accordance with the control contained in this document.

2 Purpose

The purpose of the control in this document is to allow the use and development of the land for temporary group accommodation, for use by workers operating the Loy Yang Power Station and Mine.

3 Land to which this Incorporated Document applies

The Loy Yang Power Station & Coal Mine Incorporated Document applies to that part of the land described below that is included within the Specific Controls Overlay:

- Volume 10333 Folio 549, Lot 3 on Plan of Subdivision 340417S (**Power Station Site**) as defined in Map 1 and Map 2 of this Incorporated Document; and
- Volume 10248 Folio 675, Crown Allotment 5V Section A Parish of Loy Yang on Title Plan 004871H (**Mine Site**) as defined in Map 1 and Map 3 of this Incorporated Document.

The Specific Controls Overlay is mapped as SCO4 and applies to the area to be used for temporary group accommodation and on the **Power Station Site** and **Mine Site**.

4 Control

This Incorporated Document allows the use and development of the land for group accommodation on a temporary emergency basis during the COVID-19 pandemic. It also allows for activities ancillary to group accommodation such as the provision of food and cleaning services.

Pursuant to Clause 45.12 of the Latrobe Planning Scheme, the land identified in this Incorporated Document may be used and developed for the purposes described above in accordance with the controls specified below, despite any prohibition or restriction which would otherwise apply under the provisions of the Latrobe Planning Scheme.

Where there is any inconsistency between the specific controls and the general provisions of the Latrobe Planning Scheme, the specific controls in this Incorporated Document will prevail.

5 Specific controls

The use and development of the land for temporary group accommodation must be generally in accordance with the development plans in **Annexure A** to this Incorporated Document.

6 Expiry of this control

This control expires 12 months after the gazettal date.

The Minister for Planning may postpone the expiry of this control if a request is made in writing before this control expires or within three months afterwards.

Map 1



File Ref: L:\work\ENG\30042475E - AGL Land management\2019\160 Other\160.3 Workspaces\2019-2020\200401_AccomPP_Overall.mxd



- Legend**
- Rectangular symbol: AGL Loy Yang Titles
 - Green star symbol: Proposed Location of Accommodation Villages



Datum: GDA94 Latrobe Valley Grid
0 250 500 1,000 1,500 2,000
Metres
Scale 1:42,000

**AGL Loy Yang
Proposed Location of
Accommodation Villages
Location Plan**

Map 2



File Ref: L:\work\ENG\30042479E - AGL Land management 2018\160 Other\160.3 Workspaces\2019-2020\200401_AccomPP_Power Station Site.mxd



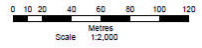
Extract from LYPGIG 1/04/2020

Legend

- Accommodation Site 1
- AGL Loy Yang Titles



Datum: SECV Latrobe Valley Grid

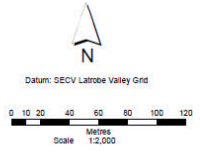


**AGL Loy Yang
Proposed Location of
Accommodation Village
Site 1**

Map 3



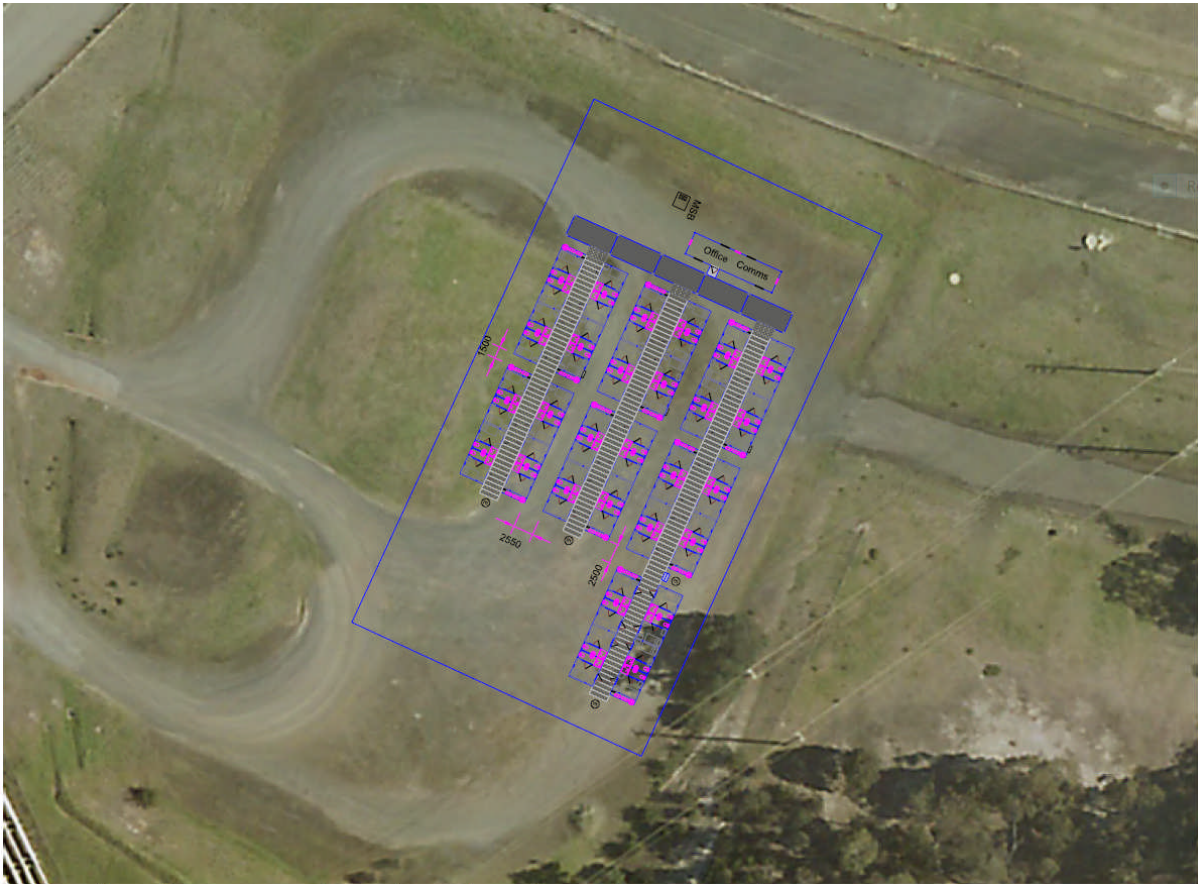
- Legend**
- Accommodation Site 2
 - AGL Loy Yang Titles



**AGL Loy Yang
Proposed Location of
Accommodation Village
Site 2**

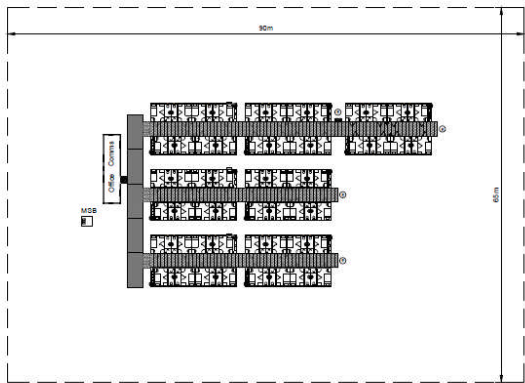
File Ref: L:\work\ENG\30042479E - AGL Land management 2018\160 Other\160.3 Workspaces\2019-2020\200401_AccomPP_Mine Site.mxd

Annexure A



Drawing not to scale. Layout indicative and may be customised to suit client requirements (subject to regulatory requirements).

Rectangular



AGL - Loy Yang Isolation Camp - Heli Pad
Proposed 56 Room Mobile Camp

Rev A 30/03/20

⊙ Egress
■ Walkway



Drawing not to scale. Layout indicative and may be customised to suit client requirements (subject to regulatory requirements).

Rectangul



AGL - Loy Yang Isolation Camp - Mine
Proposed 56 Room Mobile Camp

Rev A 30/03/20

⊙ Egress
■ Walkway