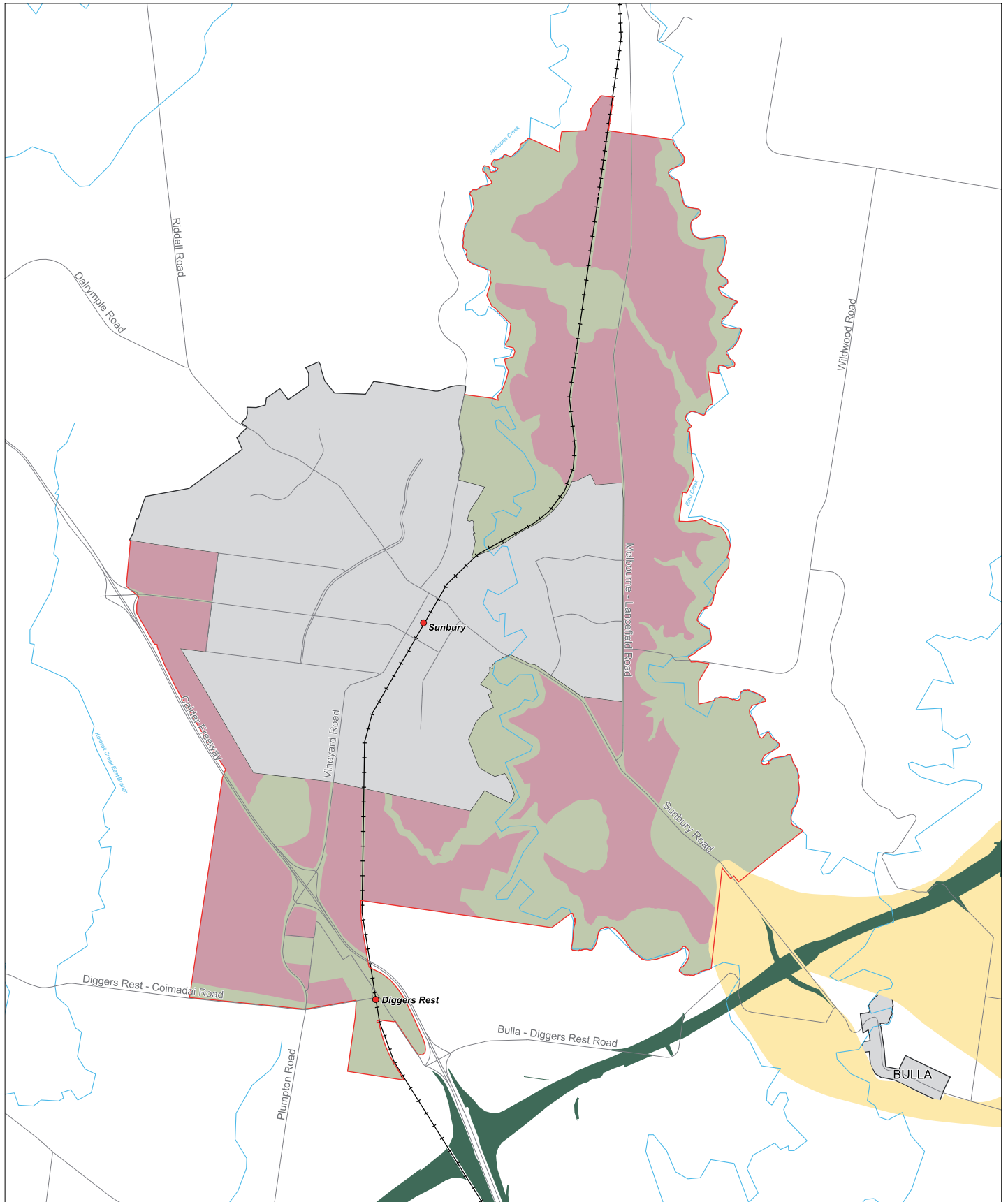


# LAND USE AND TRANSPORT INITIATIVES – SUNBURY



- Land within existing Urban Growth Boundary
- Amendment VC68 Urban Growth Boundary
- Non-Urban Land
- Land potentially suitable for urban development
- Investigation Area: Outer Metropolitan Ring/E6 Transport Corridor Link Road to Airport
- Outer Metropolitan Ring/E6 Transport Corridor
- Rail Line and Stations
- Roads
- Rivers / Creeks
- Locality

