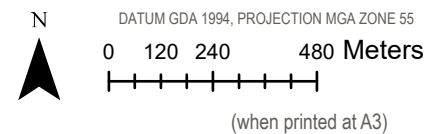


AECOM does not warrant the accuracy or completeness of information displayed in this map and any person using it does so at their own risk. AECOM shall bear no responsibility or liability for any errors, faults, defects, or omissions in the information.



AECOM



Legend

- Sensitive Receptor
- Buildings
- Shipping Containers (2050)
- Site Boundary

Noise Levels

- < 62 dB(A)
- 62 - 67 dB(A)
- > 67 dB(A)

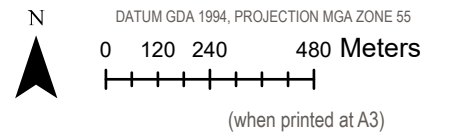
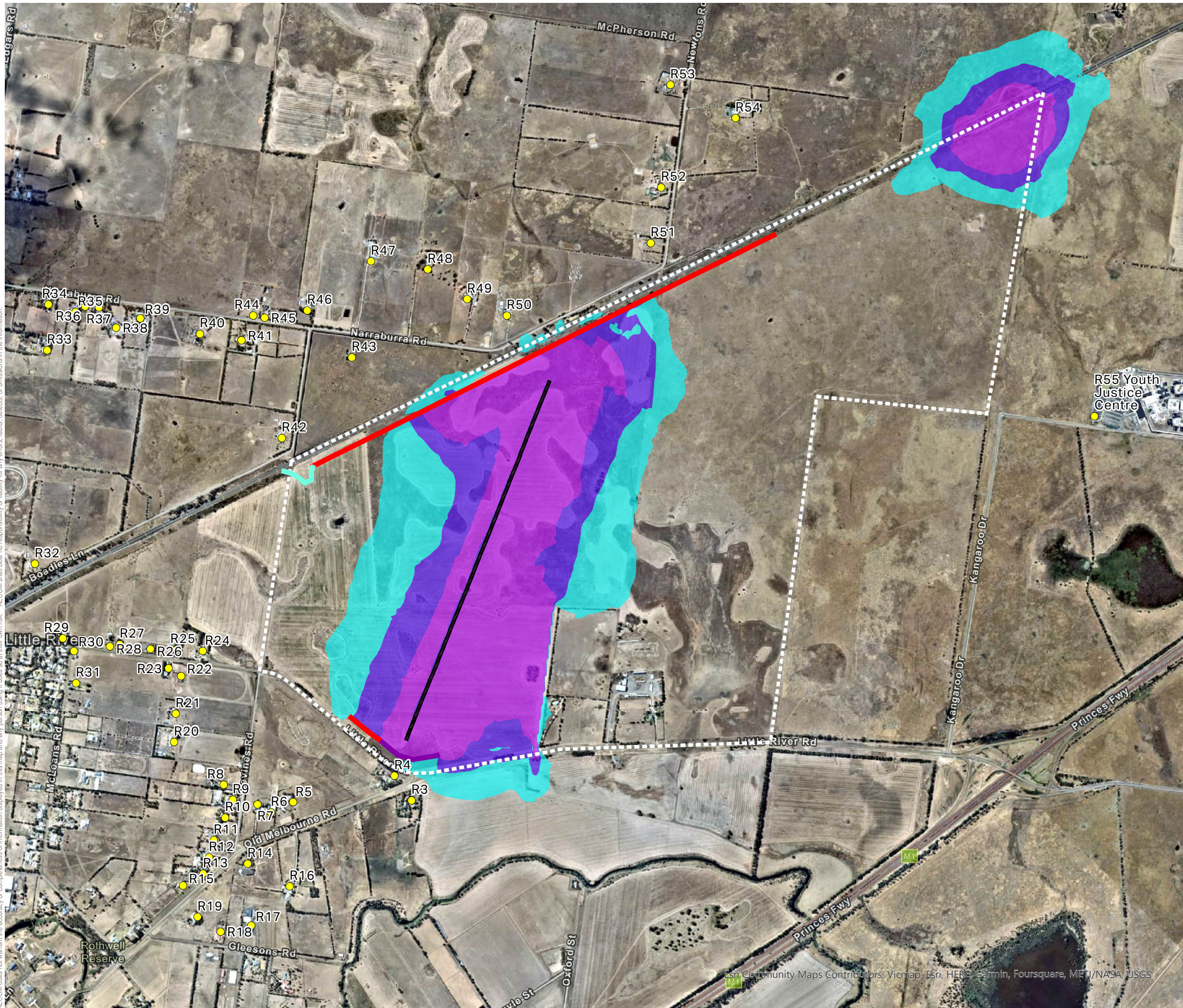
Little River Logistics Precinct

Noise Contour Map - 2050 Traffic L_{10,18hr} Assessment

PROJECT #: 60677282
 CREATED BY: PD
 LAST MODIFIED: 30/05/2023
 VERSION: 3

G-8

AECOM does not warrant the accuracy or completeness of information displayed in this map and any person using it does so at their own risk. AECOM shall bear no responsibility or liability for any errors, faults, defects, or omissions in the information.



Legend

- 12.0 Metre Barrier (2029)
- 8.0 Metre Barrier (2029)
- 6.0 Metre Barrier (2029)
- Sensitive Receptor
- Shipping Containers (2029)
- Site Boundary

Note: Refer to G-14 for rail flyover barriers

Noise Levels

- < 36 dB(A)
- 36 - 40 dB(A)
- 40 - 44 dB(A)
- > 44 dB(A)

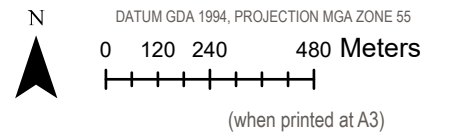
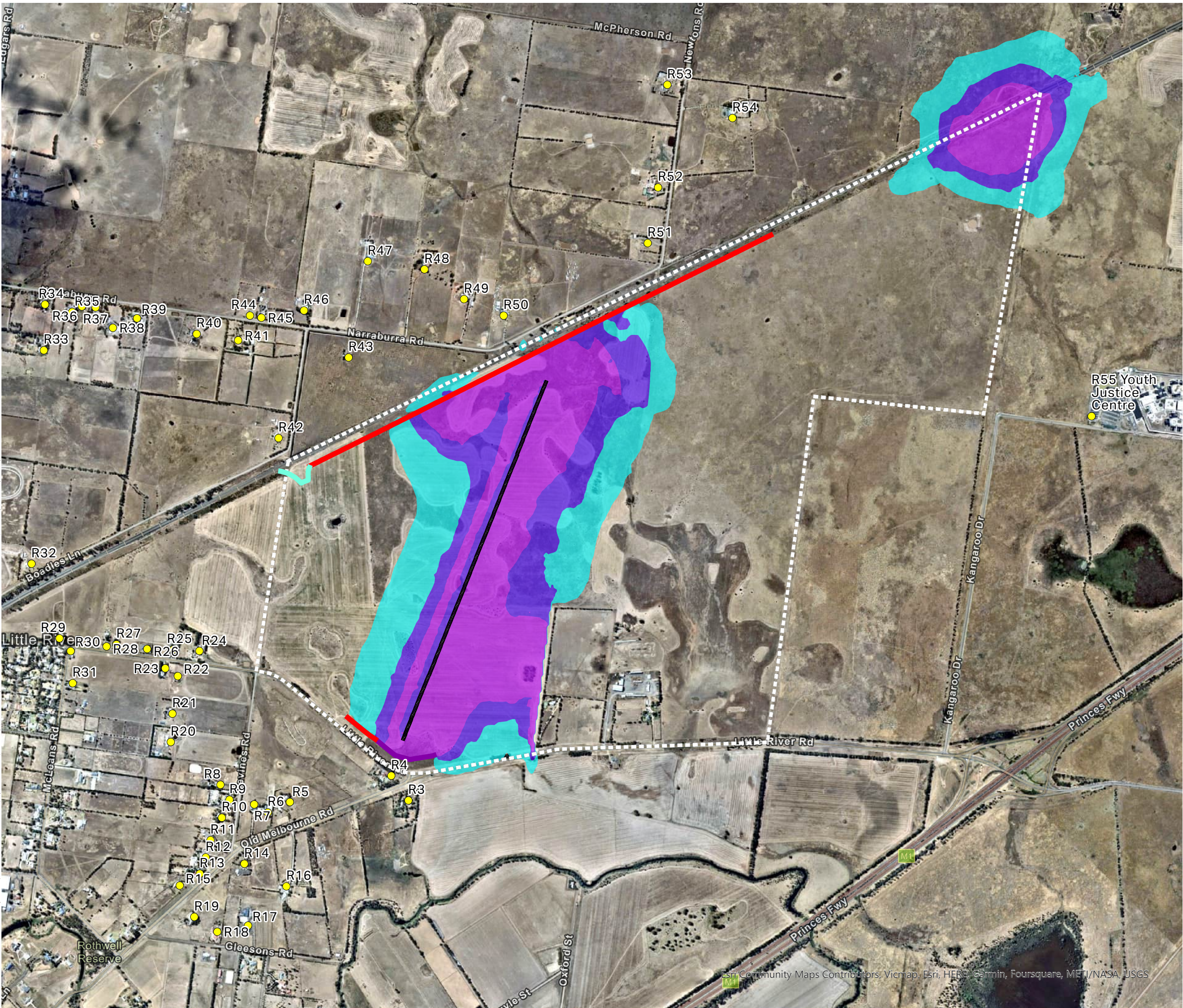
Little River Logistics Precinct

Noise Contour Map - 2029 Operational
L_{eq,30min} Assessment (Day period)







PROJECT #: 60677282
 CREATED BY: PD
 LAST MODIFIED: 30/05/2023
 VERSION: 3

G-9

AECOM does not warrant the accuracy or completeness of information displayed in this map and any person using it does so at their own risk. AECOM shall bear no responsibility or liability for any errors, faults, defects, or omissions in the information.







Legend

-  12.0 Metre Barrier (2029)
-  8.0 Metre Barrier (2029)
-  6.0 Metre Barrier (2029)
-  Sensitive Receptor
-  Shipping Containers (2029)
-  Site Boundary

Note: Refer to G-14 for rail flyover barriers

Noise Levels

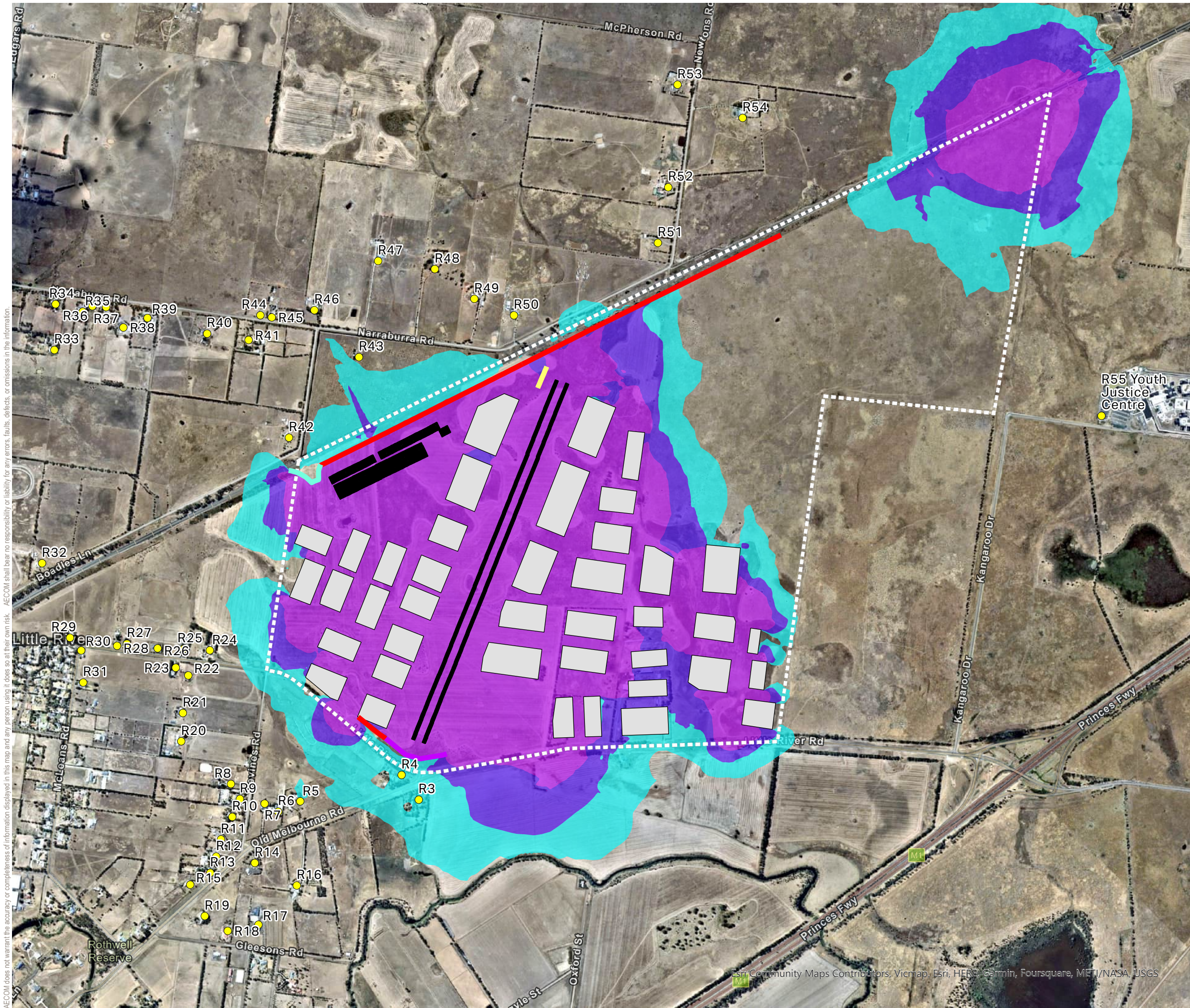
-  < 36 dB(A)
-  36 - 40 dB(A)
-  40 - 44 dB(A)
-  > 44 dB(A)

Little River Logistics Precinct

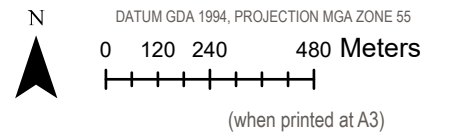
**Noise Contour Map - 2029 Operational
Leq,30min Assessment (Eve / Night period)**

PROJECT #: 60677282
 CREATED BY: PD
 LAST MODIFIED: 30/05/2023
 VERSION: 3

G-10



AECOM does not warrant the accuracy or completeness of information displayed in this map and any person using it does so at their own risk. AECOM shall bear no responsibility or liability for any errors, faults, defects, or omissions in the information.



Legend

- 12.0 Metre Barrier (2029)
- 8.0 Metre Barrier (2029)
- 6.0 Metre Barrier (2050)
- 6.0 Metre Barrier (2029)
- Sensitive Receptor
- Buildings
- Shipping Containers (2050)
- Site Boundary

Note: Refer to G-14 for rail flyover barriers

Noise Levels

- < 36 dB(A)
- 36 - 40 dB(A)
- 40 - 44 dB(A)
- > 44 dB(A)

Little River Logistics Precinct

**Noise Contour Map - 2050 Operational
 Leq,30min Assessment (Day period)**

PROJECT #: 60677282
 CREATED BY: PD
 LAST MODIFIED: 30/05/2023
 VERSION: 3

G-11