

Legend

Project area

Phytophthora Infection

Observed weed species

Weed - High to Very High threat

Weed - Other threat

Weed Infestations

Chrysanthemoides monilifera - Boneseed

Pittosporum undulatum - Sweet Pittosporum

Trail alignment

Beach/Rock Shelf

Existing Informal Trail

Existing MVO Track

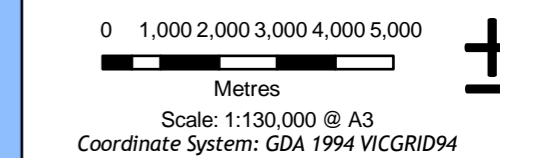
Existing Road/Footpath

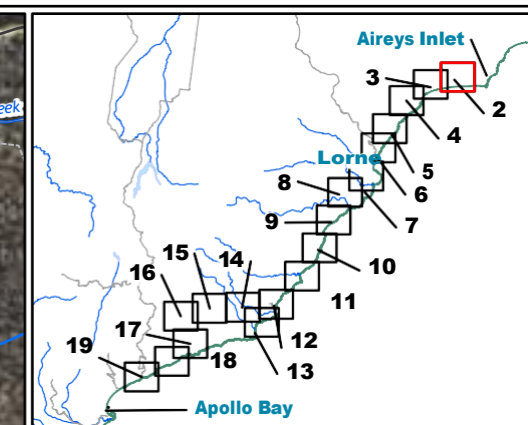
Existing Walking Trail

New Walking Trail

Other

Figure 4.1 Weed and pathogen distribution in the project area





Legend

Assessment corridor - Unassessed

Observed weed species

Weed - High to Very High threat

Weed - Other threat

Trail alignment

Existing Informal Trail

Existing MVO Track

Existing Road/Footpath

Existing Walking Trail

New Walking Trail

Figure 4.2 Weed and pathogen distribution in the project area

0 80 160 240 320 400

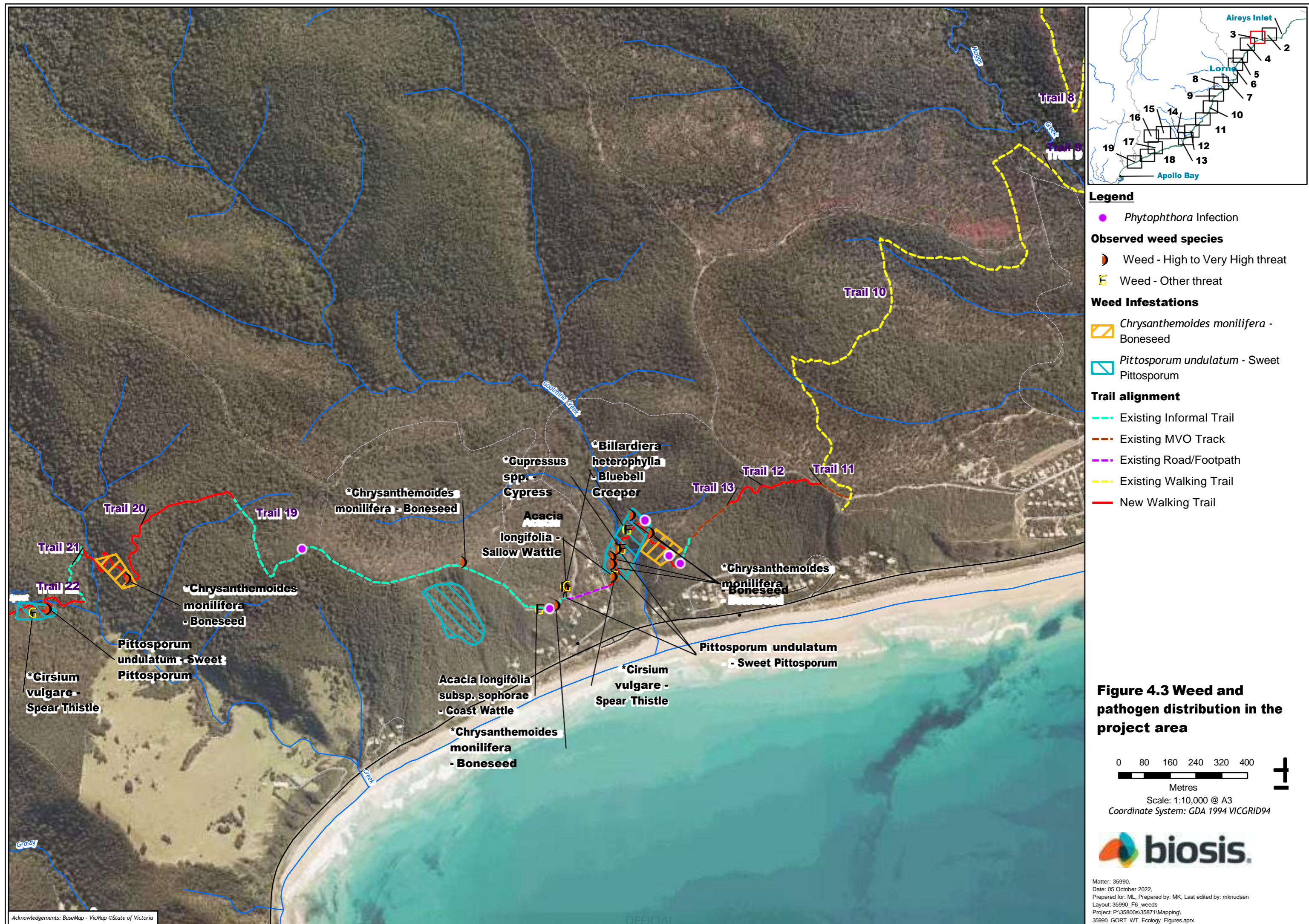
Metres

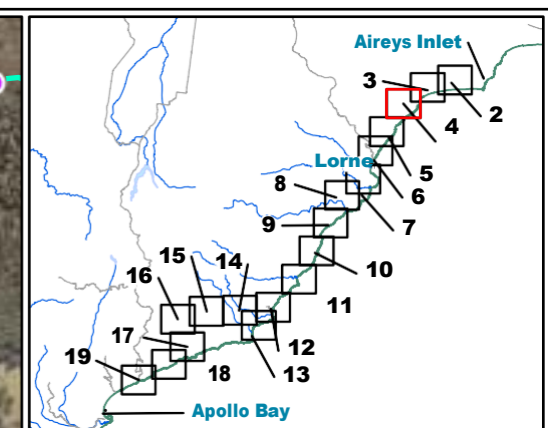
Scale: 1:10,000 @ A3

Coordinate System: GDA 1994 VICGRID94



Matter: 35990,
Date: 05 October 2022,
Prepared for: ML, Prepared by: MK, Last edited by: mknudsen
Layout: 35990_F6_weeds
Project: P:\35800s\35871\Mapping\35990_GORT_WT_Ecology_Figures.aprx

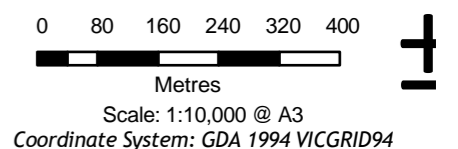




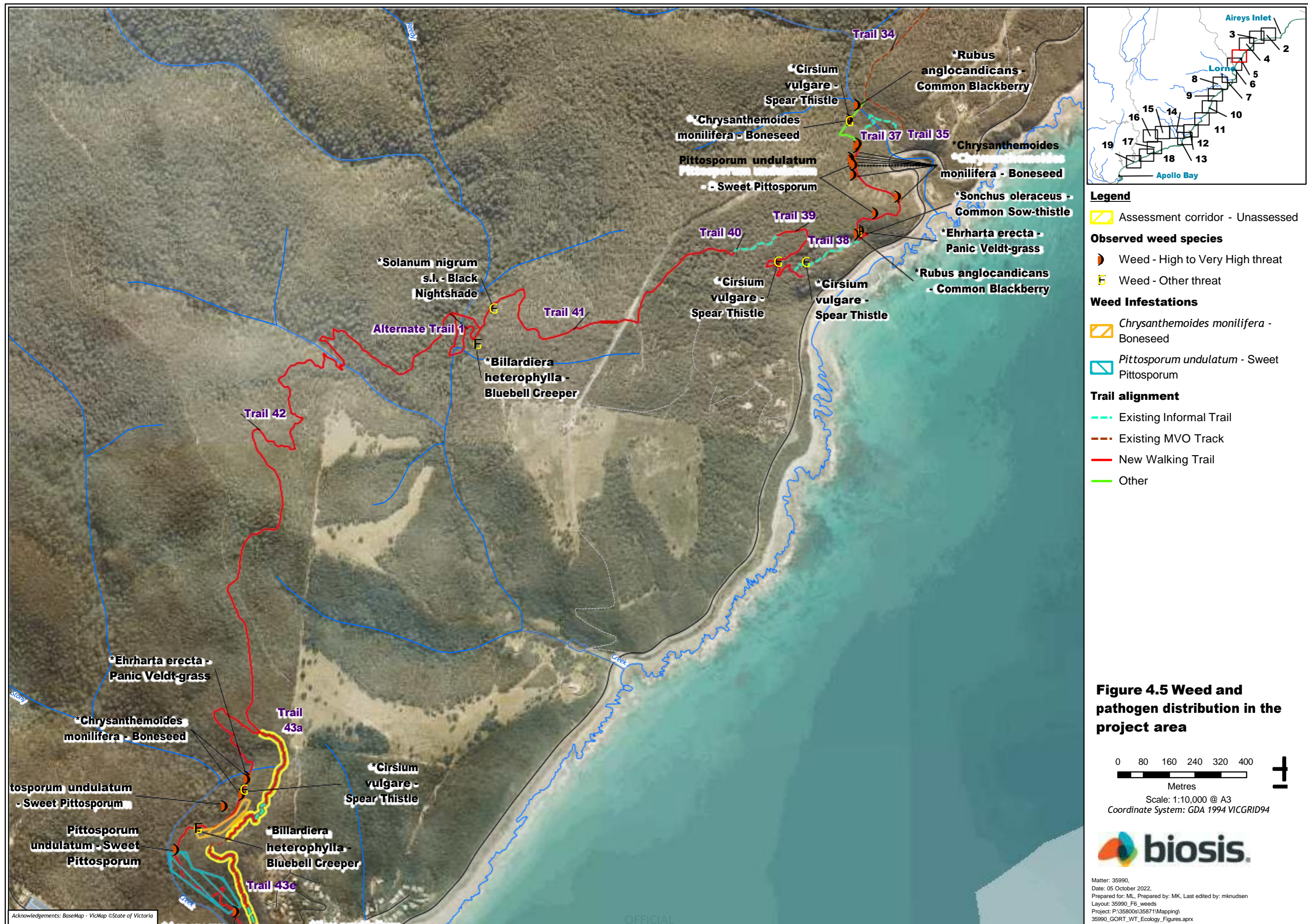
Legend

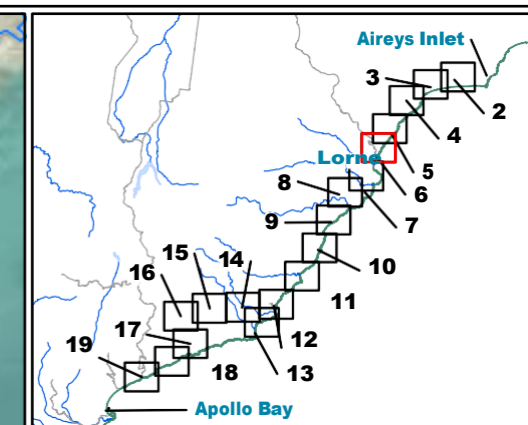
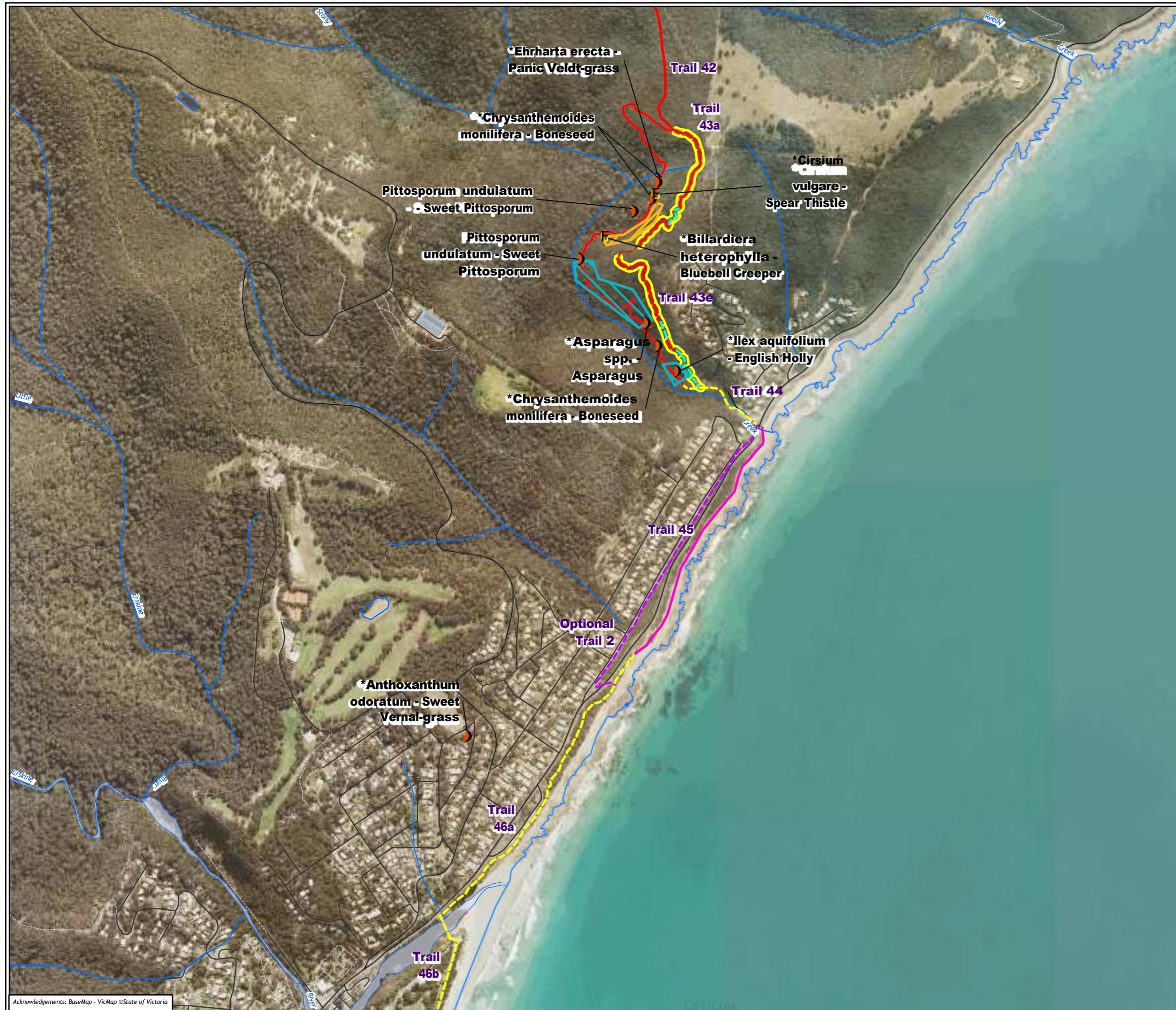
- *Phytophthora* Infection
- Observed weed species**
 - Weed - High to Very High threat
 - Weed - Other threat
- Weed Infestations**
 - Chrysanthemoides monilifera* - Boneseed
 - Pittosporum undulatum* - Sweet Pittosporum
- Trail alignment**
 - Existing Informal Trail
 - Existing MVO Track
 - New Walking Trail
 - Other

Figure 4.4 Weed and pathogen distribution in the project area



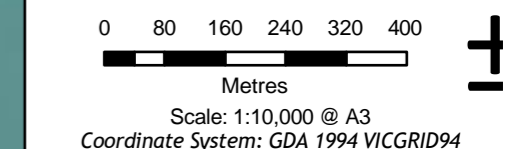
Matter: 35990,
Date: 05 October 2022,
Prepared for: ML, Prepared by: MK, Last edited by: mknudsen
Layout: 35990_F6_weeds
Project: P:\35800s\35871\Mapping\35990_GORT_WT_Ecology_Figures.aprx



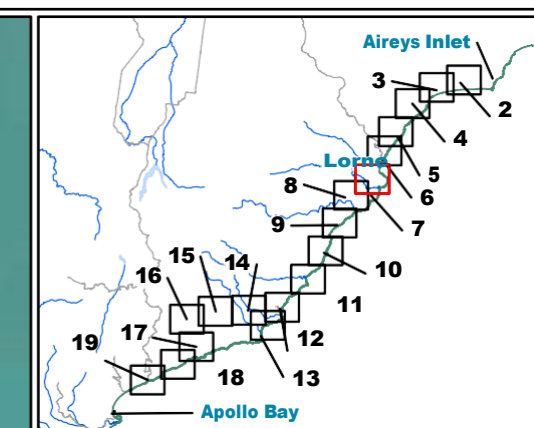


- Legend**
- Assessment corridor - Unassessed
 - Observed weed species**
 - Weed - High to Very High threat
 - Weed - Other threat
 - Weed Infestations**
 - Chrysanthemoides monilifera* - Boneseed
 - Pittosporum undulatum* - Sweet Pittosporum
 - Trail alignment**
 - Beach/Rock Shelf
 - Existing Informal Trail
 - Existing MVO Track
 - Existing Road/Footpath
 - Existing Walking Trail
 - New Walking Trail

Figure 4.6 Weed and pathogen distribution in the project area



Matter: 35990,
Date: 05 October 2022,
Prepared for: ML, Prepared by: MK, Last edited by: mknudsen
Layout: 35990_F6_weeds
Project: P:\35800s\35871\Mapping\35990_GORT_WT_Ecology_Figures.aprx



Legend

Observed weed species

- Weed - High to Very High threat
- Weed - Other threat

Trail alignment

- Existing MVO Track
- Existing Road/Footpath
- Existing Walking Trail
- New Walking Trail

Figure 4.7 Weed and pathogen distribution in the project area

0 80 160 240 320 400

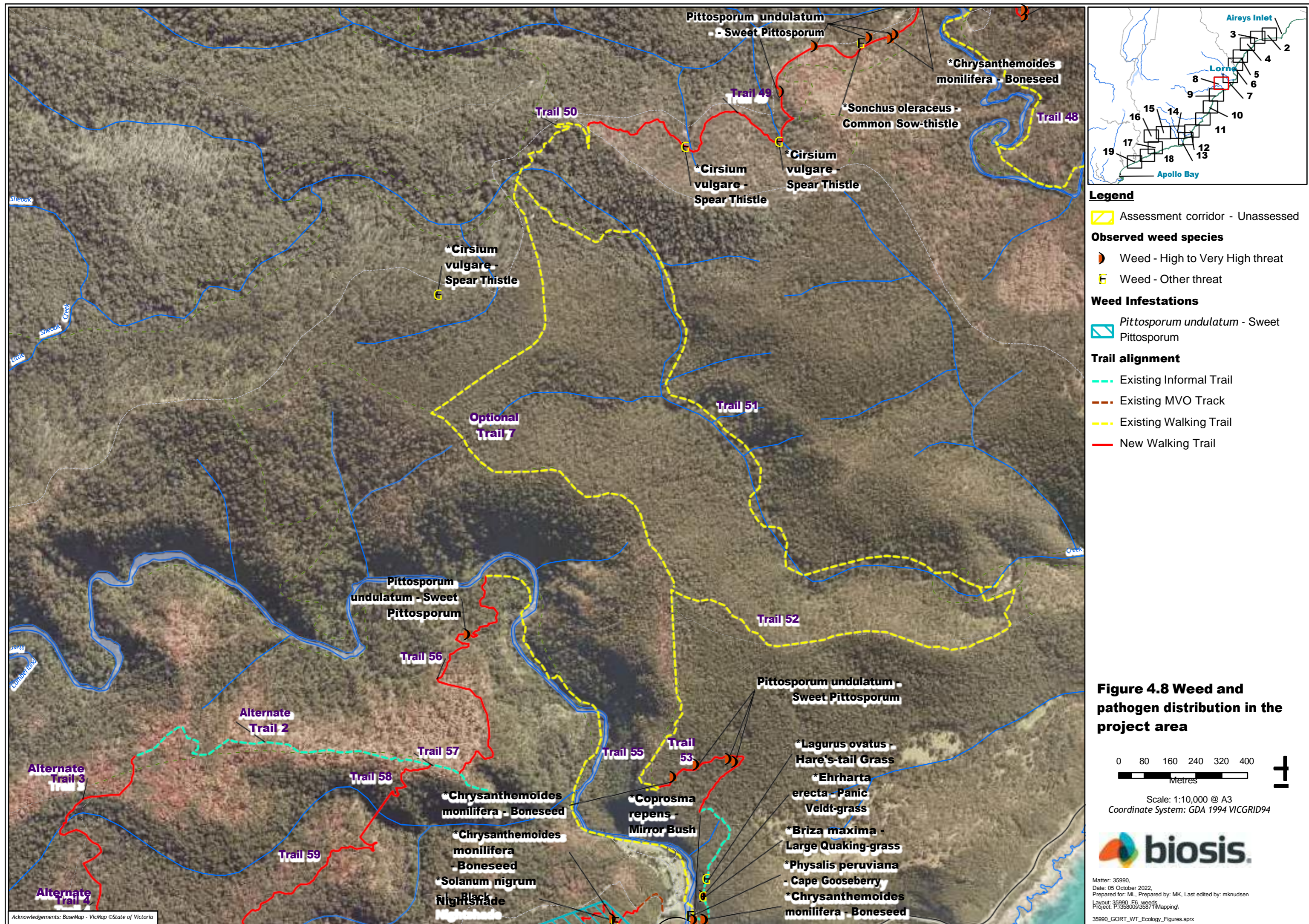
Metres

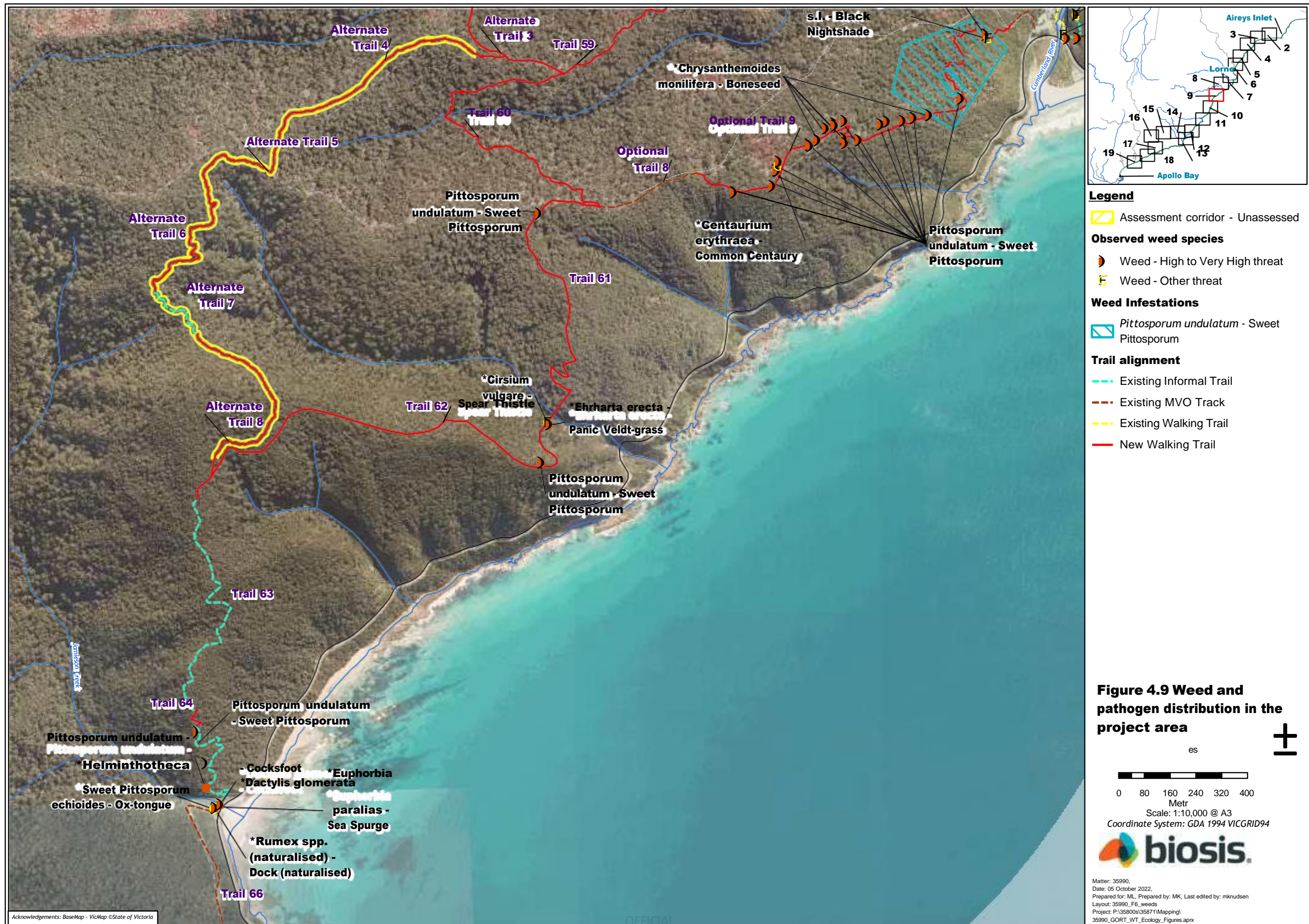
Scale: 1:10,000 @ A3

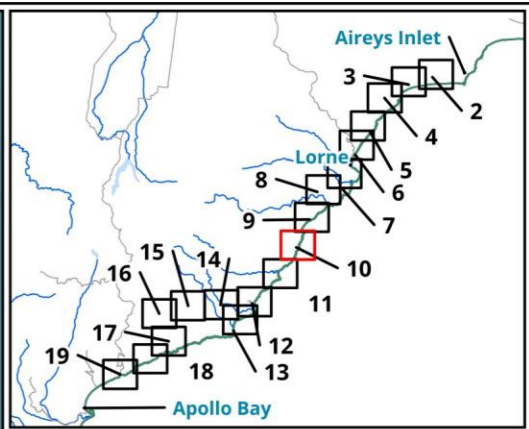
Coordinate System: GDA 1994 VICGRID94



Matter: 35990,
Date: 05 October 2022,
Prepared for: ML, Prepared by: MK, Last edited by: mknudsen
Layout: 35990_F6_weeds
Project: P:\35800s\35871\Mapping\35990_GORT_WT_Ecology_Figures.aprx





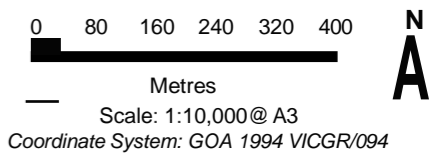


Legend

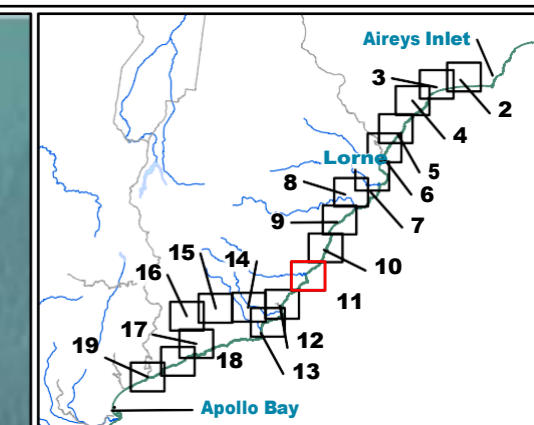
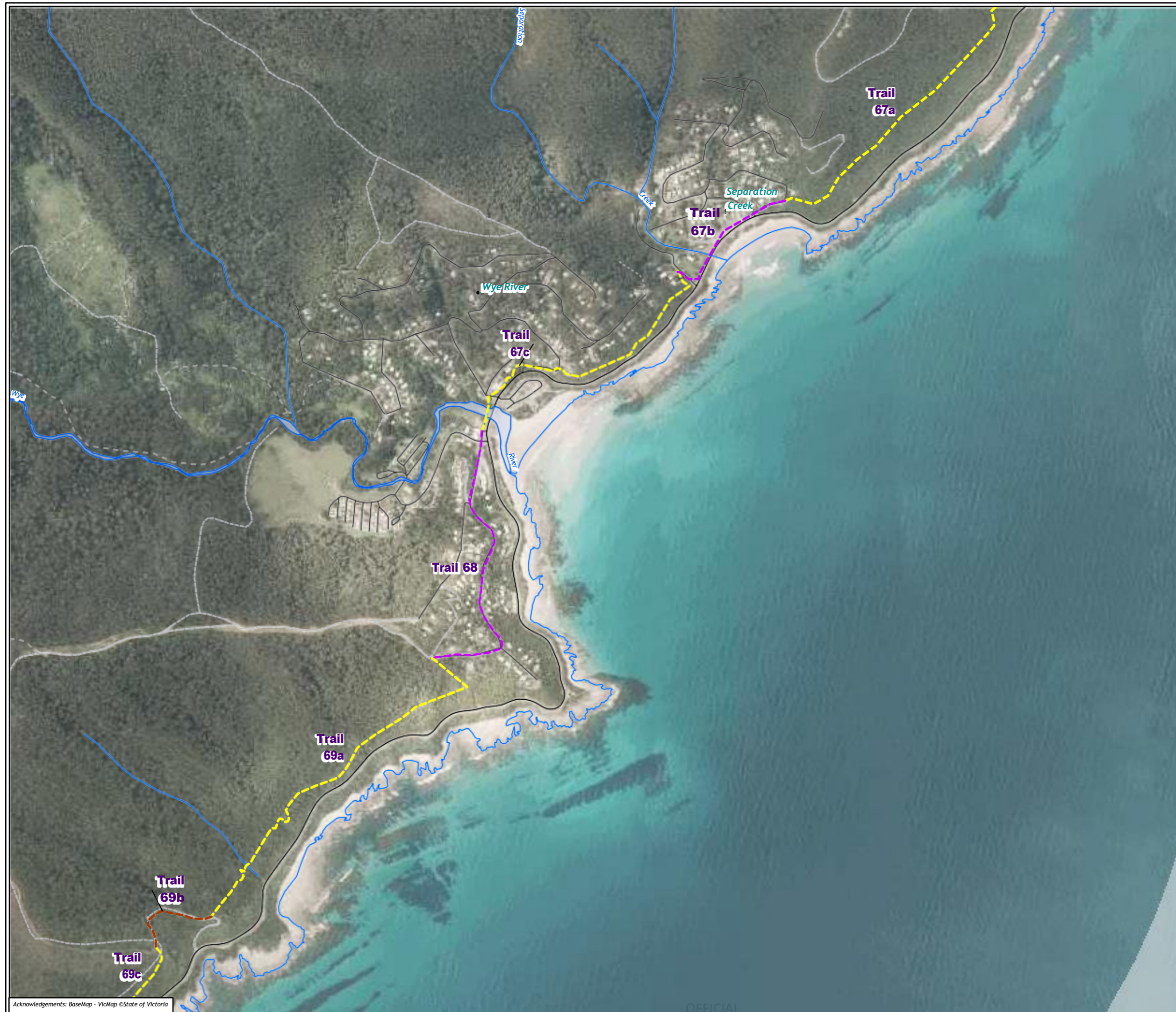
Trail alignment

- Existing MVO Track
- Existing Walking Trail

Figure 4.10 Weed and pathogen distribution in the project area



Matter: 35990,
Date: 05 October 2022,
Prepared for: ML, Prepared by: MK, Last edited by: mknudsen
Layout: 35990_F6_weeds
Project: P:\35800s\35871\Mapping\
35990_GORT_WT_Ecology_Figures.aprx



Legend

Trail alignment

- Existing MVO Track
- Existing Road/Footpath
- Existing Walking Trail

Figure 4.11 Weed and pathogen distribution in the project area

0 80 160 240 320 400

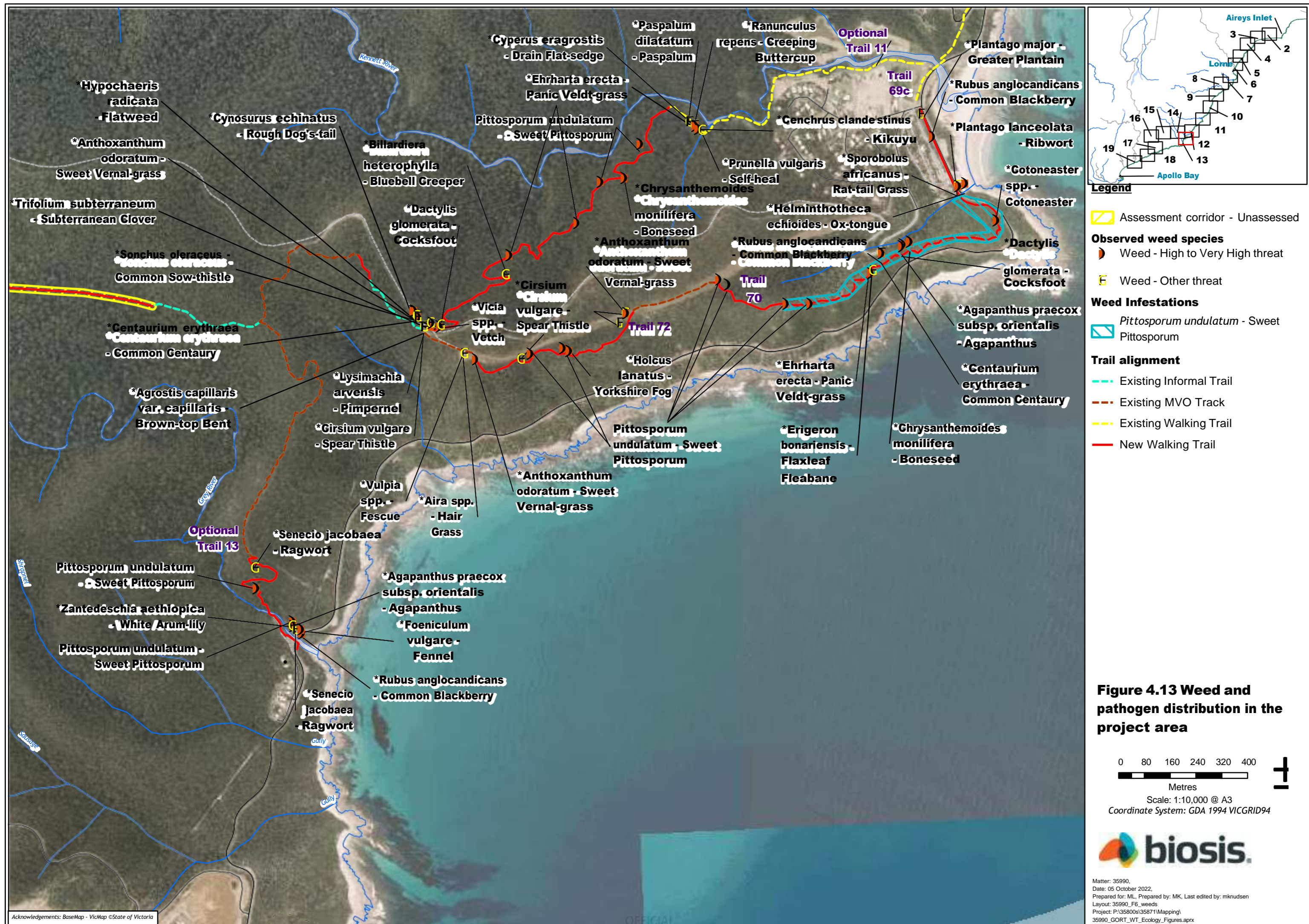
Metres

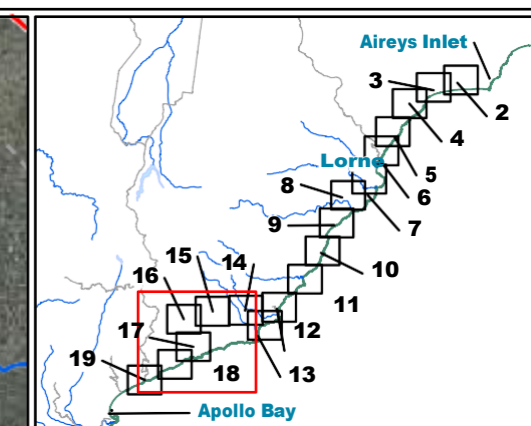
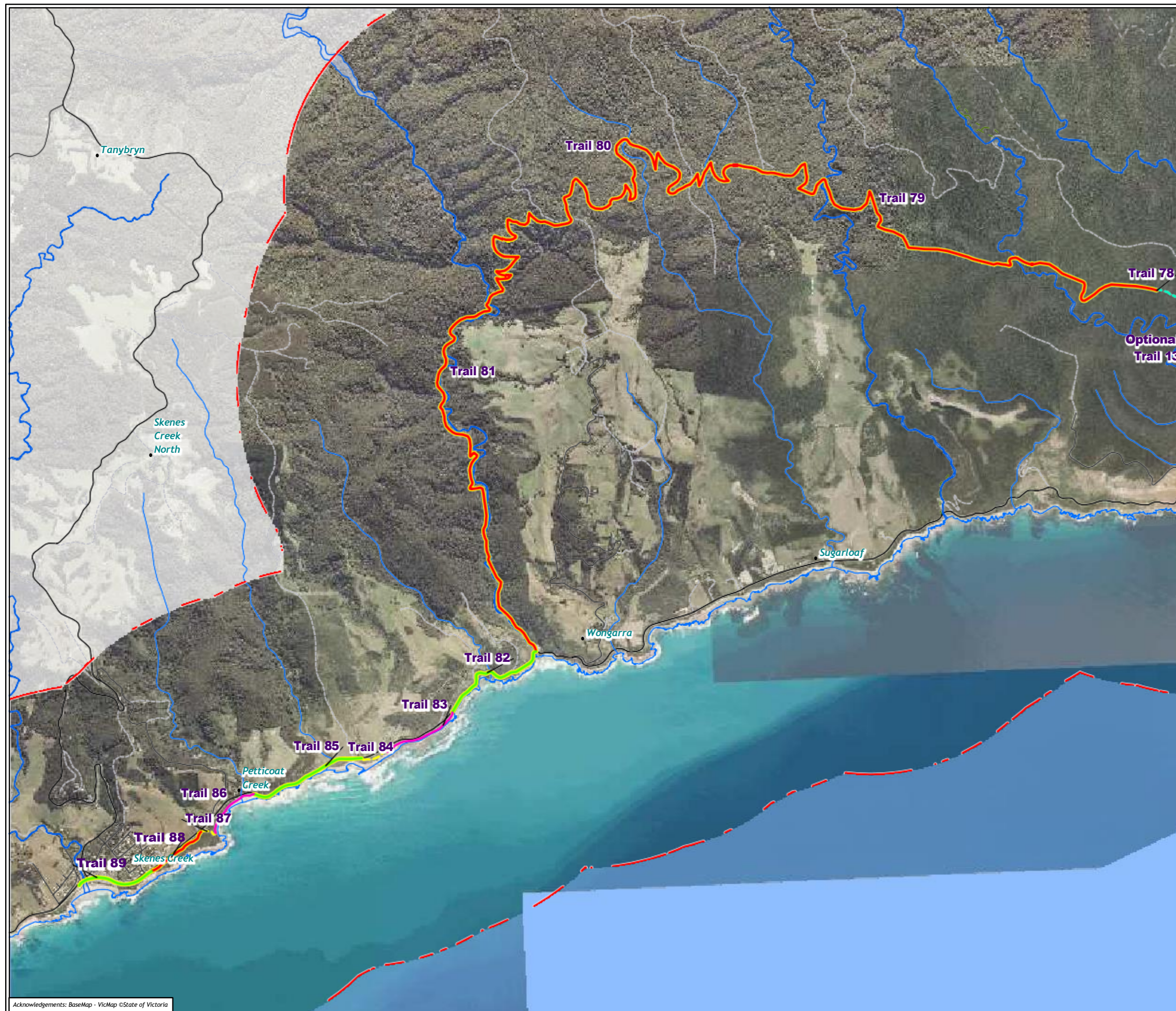
Scale: 1:10,000 @ A3

Coordinate System: GDA 1994 VICGRID94



Matter: 35990,
Date: 05 October 2022,
Prepared for: ML, Prepared by: MK, Last edited by: mknudsen
Layout: 35990_F6_weeds
Project: P:\35800s\35871\Mapping\35990_GORT_WT_Ecology_Figures.aprx





Legend

- Project area
- Assessment corridor - Unassessed
- Trail alignment**
 - Beach/Rock Shelf
 - Existing Informal Trail
 - Existing MVO Track
 - Existing Walking Trail
 - New Walking Trail
 - Other

Figure 4.14 Weed and pathogen distribution in the project area

0 275 550 825 1,100 1,375

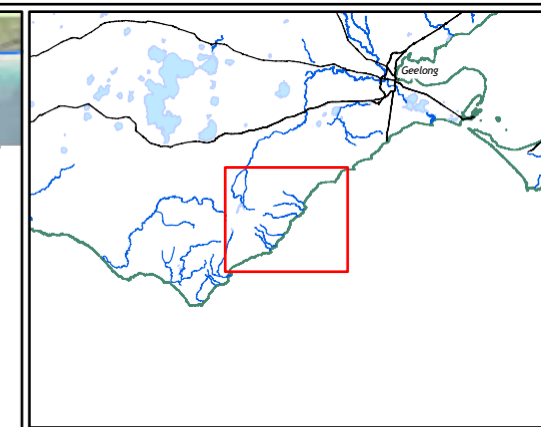
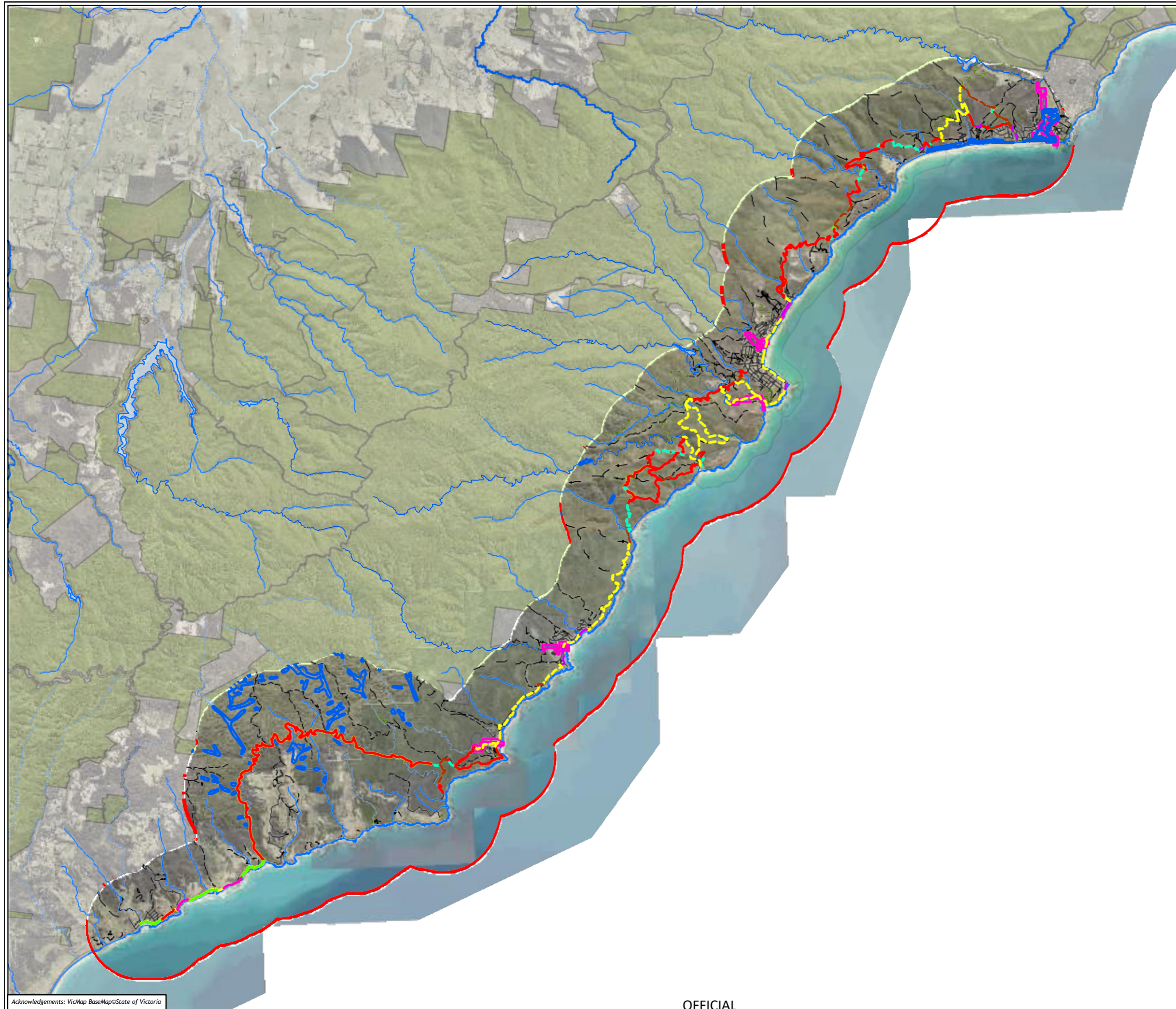
Metres

Scale: 1:35,000 @ A3

Coordinate System: GDA 1994 VICGRID94



Matter: 35990,
Date: 05 October 2022,
Prepared for: ML, Prepared by: MK, Last edited by: mknudsen
Layout: 35990_F6_weeds
Project: P:\35800s\35871\Mapping\35990_GORT_WT_Ecology_Figures.aprx



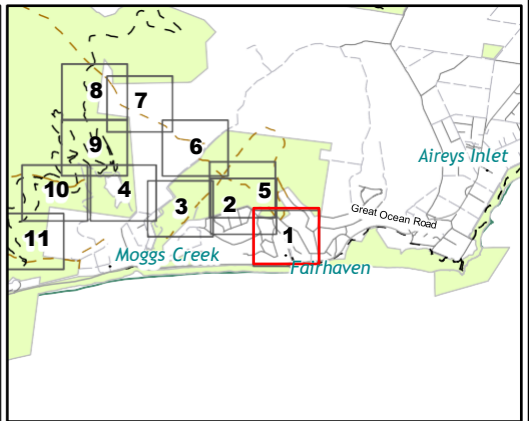
- Legend**
- Project area
 - Assessment corridor - Unassessed
 - Assessed under ground truthed route 1 - Superseded by GTR 2
 - Flora and Fauna Guarantee Act listed communities
 - EPBC Act Ecological Communities of National Environmental Significance
- Trail alignment**
- Beach/Rock Shelf
 - Existing Informal Trail
 - Existing MVO Track
 - Existing Road/Footpath
 - Existing Walking Trail
 - New Walking Trail
 - Other

Figure 5.1 Ecological features of the Assessment area


0 1,000 2,000 3,000 4,000 5,000
Metres
Scale: 1:130,000 @ A3
Coordinate System: GDA 1994 VICGRID94




Matter: 35990,
Date: 13 December 2022 ,
Prepared for: ML, Prepared by: MK, Last edited by: mknudsen
Layout: 35990_F4_Eco
Project: P:\35800s\35871\Mapping\
35990_GORT_WT_Ecology_Figures.aprx





Legend


 Assessed under ground truthed route 1 - Superseded by GTR 2

 Flora and Fauna Guarantee Act listed communities


Trail alignment

 Existing MVO Track

 Existing Road/Footpath

 New Walking Trail

Habitat zone condition/quality

 Moderate

Habitat Zone (EVC)

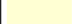
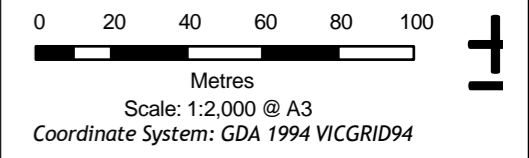
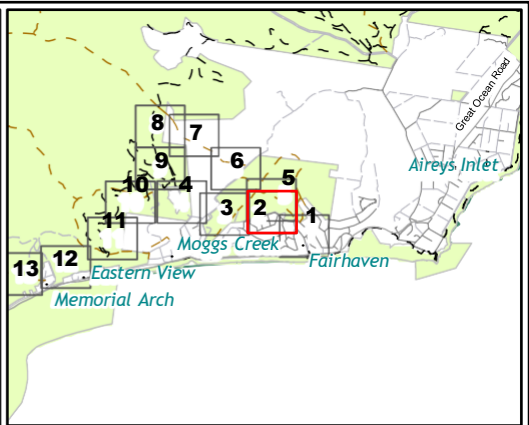
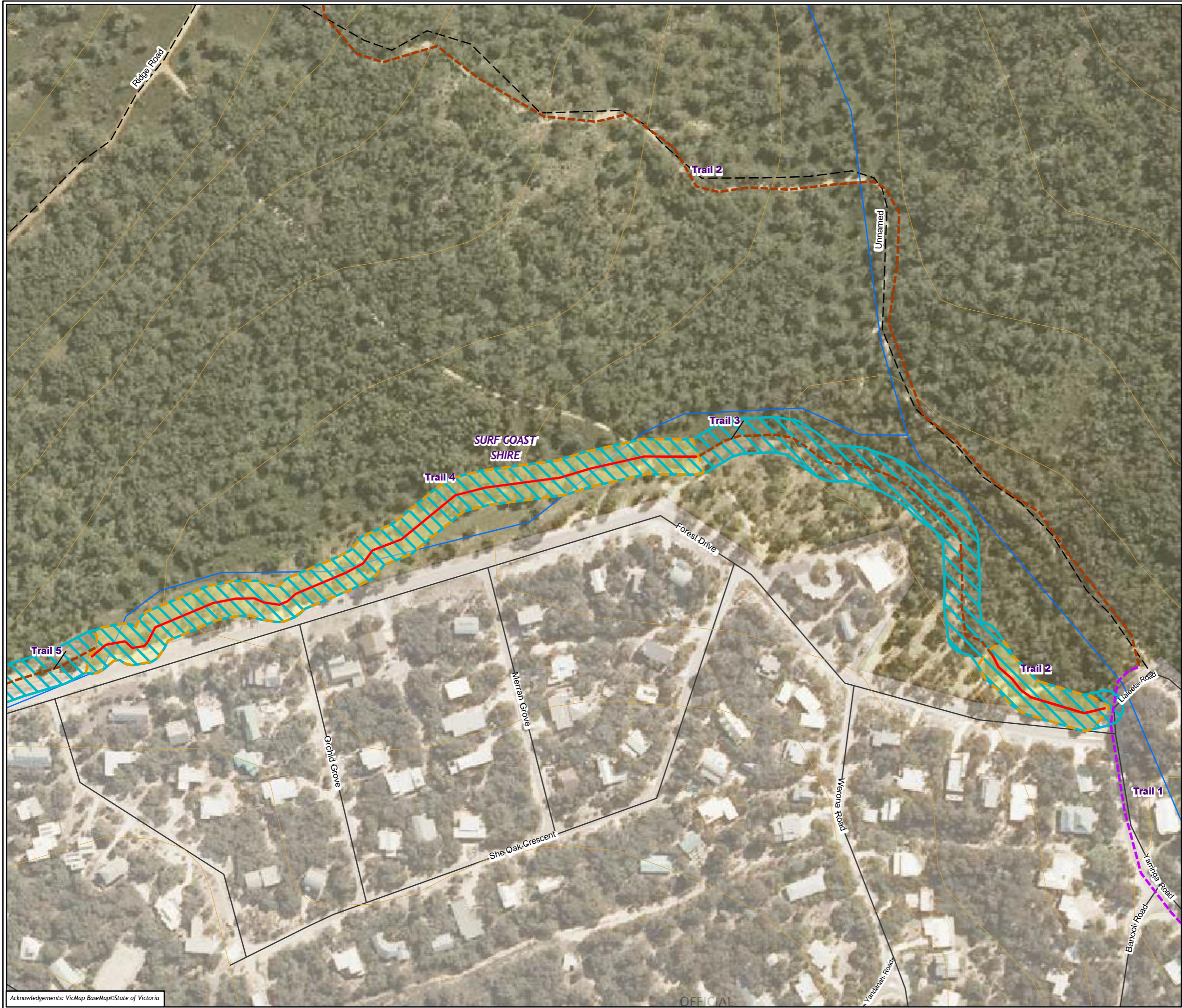
 (OtP_0048) Heathy Woodland

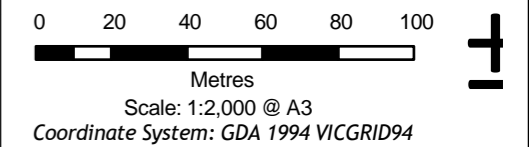
Figure 5.2 Ecological features of the Assessment area



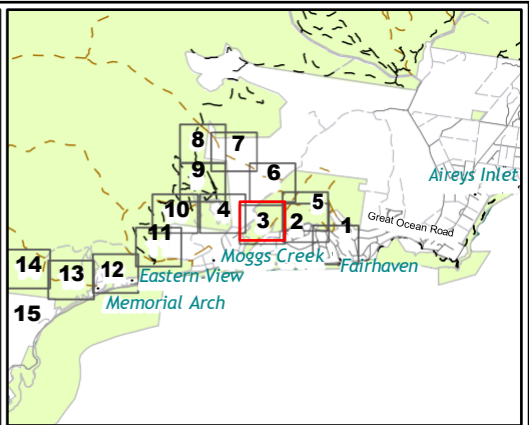
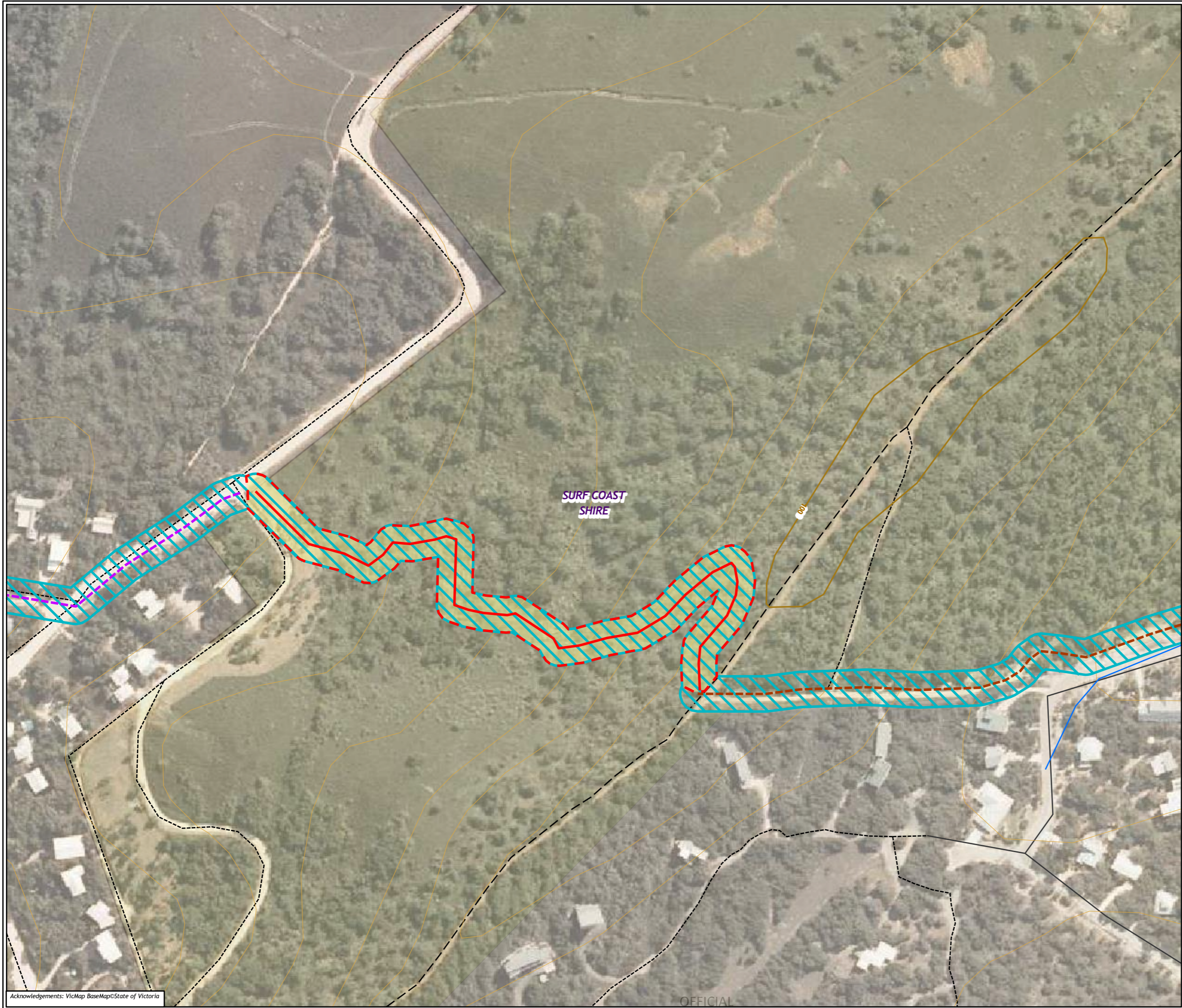


- Legend**
- Assessed under ground truthed route 1 - Superseded by GTR 2
 - Trail alignment**
 - Existing MVO Track
 - Existing Road/Footpath
 - New Walking Trail
 - Habitat zone condition/quality**
 - Moderate
 - Habitat Zone (EVC)**
 - (OtP_0048) Heathy Woodland


Figure 5.3 Ecological features of the Assessment area






Matter: 35990,
Date: 13 December 2022 ,
Prepared for: ML, Prepared by: MK, Last edited by: mknudsen
Layout: 35990_F4_Eco
Project: P:\35800s\35871\Mapping\
35990_GORT_WT_Ecology_Figures.aprx



Legend

 Assessed under ground truthed route 1 - Superseded by GTR 2

Trail alignment

-  Existing MVO Track
-  Existing Road/Footpath
-  New Walking Trail

Habitat zone condition/quality

 High

Habitat Zone (EVC)


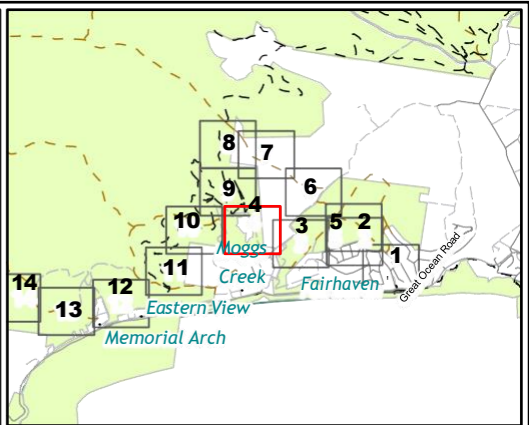
 (OtP_0048) Heathy Woodland

Figure 5.4 Ecological features of the Assessment area

0 20 40 60 80 100
Metres
Scale: 1:2,000 @ A3
Coordinate System: GDA 1994 VICGRID94



Matter: 35990,
Date: 13 December 2022 ,
Prepared for: ML, Prepared by: MK, Last edited by: mknudsen
Layout: 35990_F4_Eco
Project: P:\35800s\35871\Mapping\
35990_GORT_WT_Ecology_Figures.aprx



Legend

Assessed under ground truthed route 1 - Superseded by GTR 2

Trail alignment

- Existing Road/Footpath
- Existing Walking Trail
- New Walking Trail

Large trees in patch

- Dead
- Eucalyptus globulus* - Southern Blue-gum
- Eucalyptus obliqua* - Messmate Stringybark

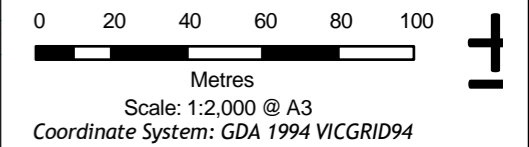
Habitat zone condition/quality

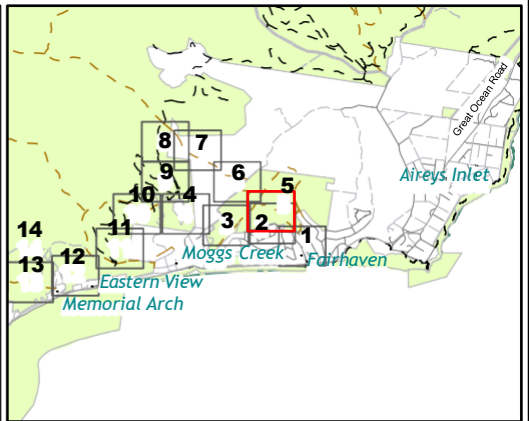
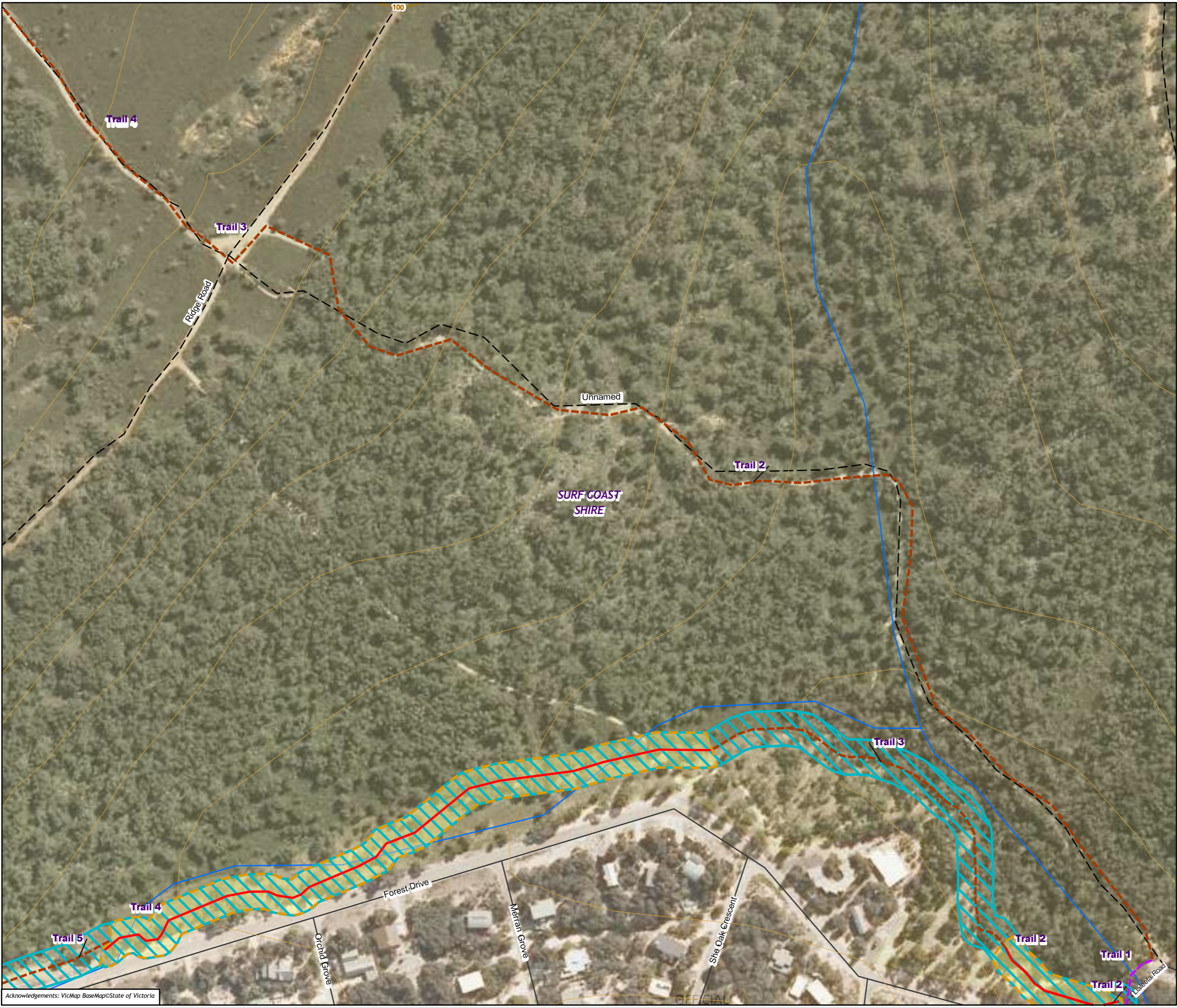
- High

Habitat Zone (EVC)

- (OtP_0021) Shrubby Dry Forest

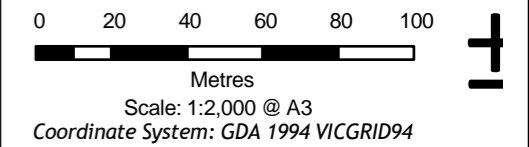
Figure 5.5 Ecological features of the Assessment area

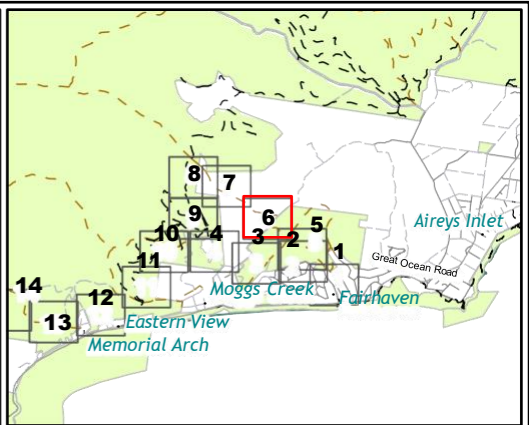




- Legend**
- Assessed under ground truthed route 1 - Superseded by GTR 2
 - Trail alignment**
 - Existing MVO Track
 - Existing Road/Footpath
 - New Walking Trail
 - Habitat zone condition/quality**
 - Moderate
 - Habitat Zone (EVC)**
 - (OtP_0048) Heathy Woodland

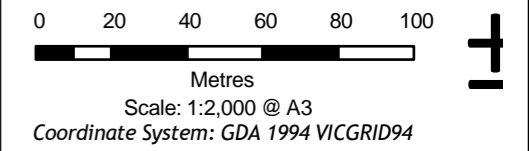
Figure 5.6 Ecological features of the Assessment area

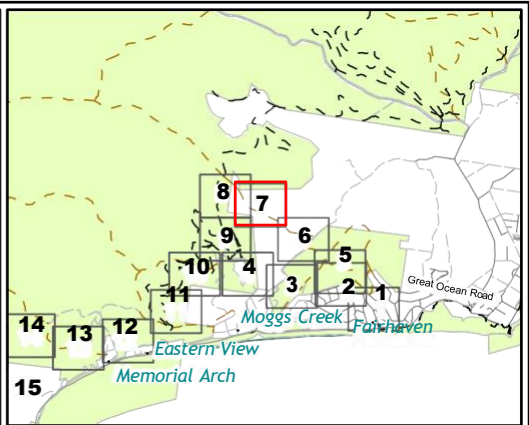




- Legend**
- Assessment corridor - Unassessed
 - Trail alignment**
 - Existing Informal Trail
 - Existing MVO Track

Figure 5.7 Ecological features of the Assessment area



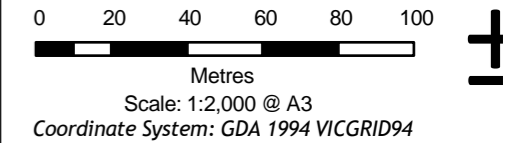


Legend

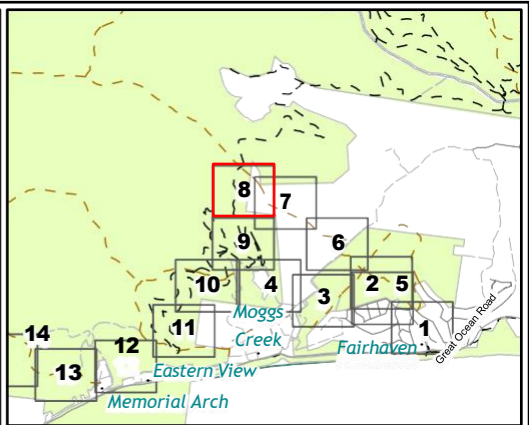
Trail alignment

--- Existing MVO Track

Figure 5.8 Ecological features of the Assessment area



Matter: 35990,
Date: 13 December 2022 ,
Prepared for: ML, Prepared by: MK, Last edited by: mknudsen
Layout: 35990_F4_Eco
Project: P:\35800s\35871\Mapping\
35990_GORT_WT_Ecology_Figures.aprx

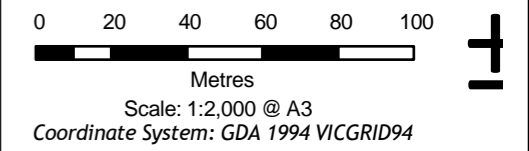


Legend

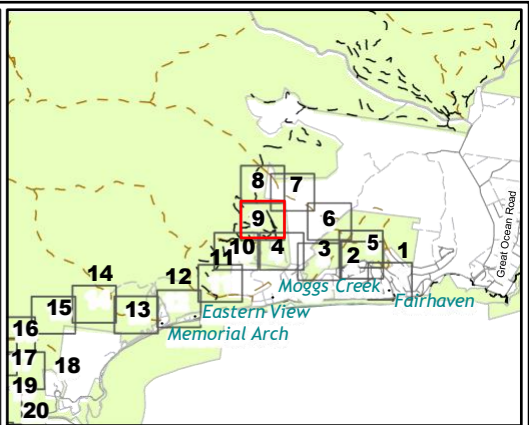
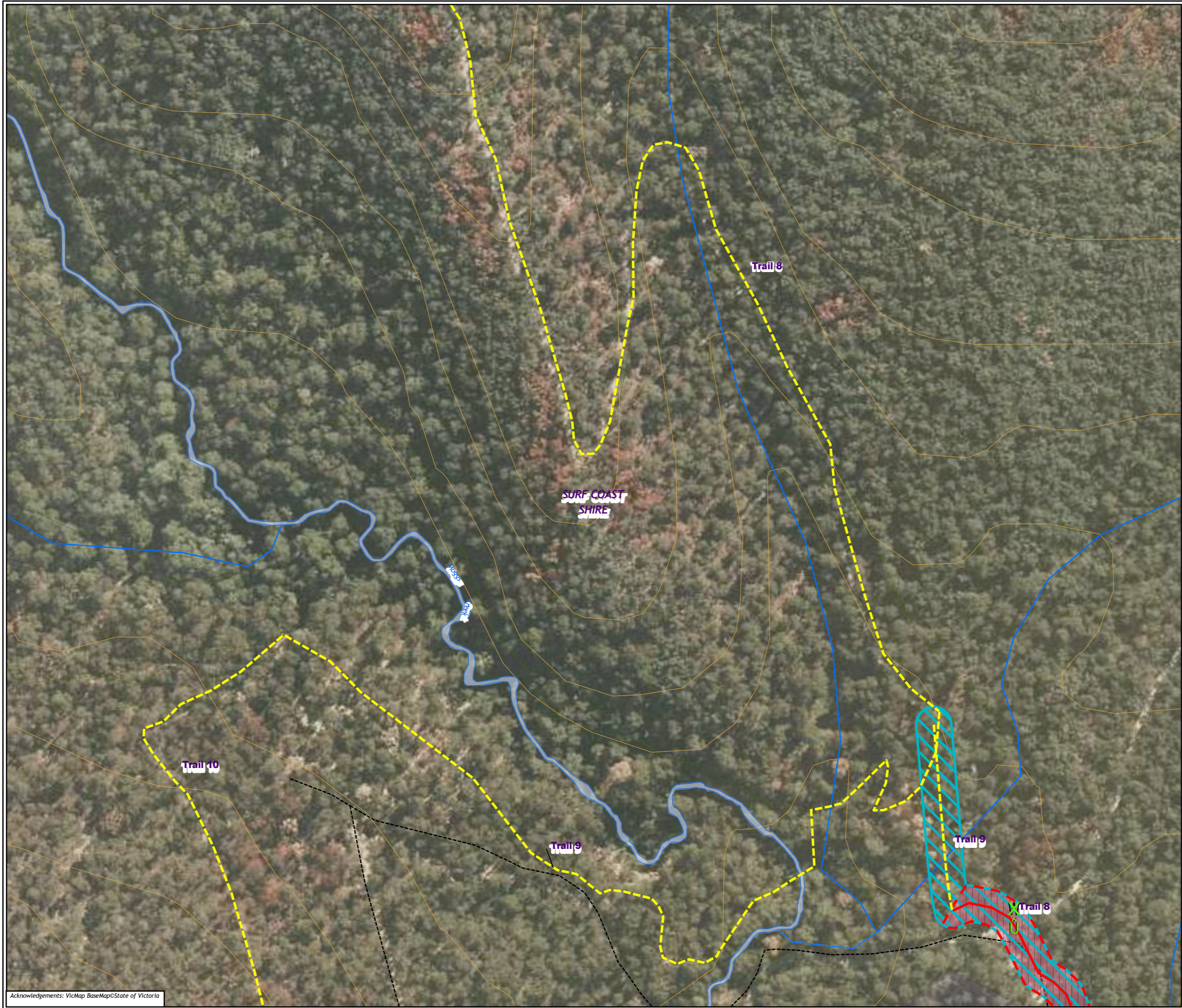
Trail alignment

- Existing MVO Track
- Existing Walking Trail


Figure 5.9 Ecological features of the Assessment area



Matter: 35990,
Date: 13 December 2022 ,
Prepared for: ML, Prepared by: MK, Last edited by: mknudsen
Layout: 35990_F4_Eco
Project: P:\35800s\35871\Mapping\
35990_GORT_WT_Ecology_Figures.aprx



Legend


 Assessed under ground truthed route 1 - Superseded by GTR 2


Trail alignment

 Existing Walking Trail

 New Walking Trail

Large trees in patch

 *Eucalyptus globulus* - Southern Blue-gum

 *Eucalyptus obliqua* - Messmate Stringybark

Habitat zone condition/quality

 High

Habitat Zone (EVC)


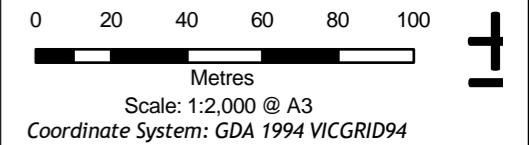
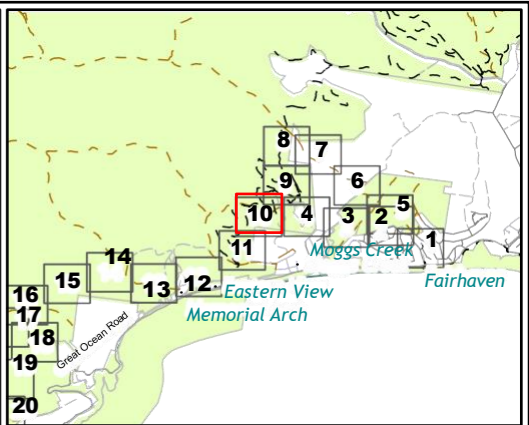
 (OtP_0021) Shrubby Dry Forest

Figure 5.10 Ecological features of the Assessment area



Matter: 35990,
Date: 13 December 2022 ,
Prepared for: ML, Prepared by: MK, Last edited by: mknudsen
Layout: 35990_F4_Eco
Project: P:\35800s\35871\Mapping\
35990_GORT_WT_Ecology_Figures.aprx

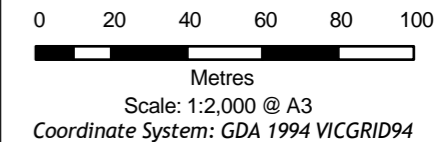


Legend

Trail alignment

--- Existing Walking Trail

Figure 5.11 Ecological features of the Assessment area



Matter: 35990,
Date: 13 December 2022 ,
Prepared for: ML, Prepared by: MK, Last edited by: mknudsen
Layout: 35990_F4_Eco
Project: P:\35800s\35871\Mapping\
35990_GORT_WT_Ecology_Figures.aprx