



MELBOURNE METROPOLITAN
PLANNING SCHEME 1954

Surveys and Analysis

Several books have been written about Melbourne, some kindly, others not so kindly, each reflecting the opinions of the author. This volume is yet another book on Melbourne, but with a difference. It is the first one ever compiled about this great city which explains just what is Melbourne.

Despite its rather formal and technical title, the reader will find it a fascinating story because it deals with people and their everyday lives, at home, at work and at play, and with all those things in a city which are familiar to its citizens, yet about which they generally know very little.

The information contained in these chapters was obtained as an essential background for drawing up the Planning Scheme. Before one can plan for the future of a great city, intelligently and in the best interests of its people, it is imperative to find out as many facts as possible about the city and its people, their needs and desires both now and for the future.

Much of the information has never previously been known. It will therefore be of immense interest to citizens of today and for generations to come it will provide a valuable record of Melbourne as it was in the middle of the 20th century.

Ch. H. J. McIvor. J. R.
M. H. R.

MELBOURNE METROPOLITAN
PLANNING SCHEME 1954

Photo-Lithographed in Australia.
by McLAREN & CO. PTY. LTD.
Melbourne - - - Victoria



The Heart of Melbourne



MELBOURNE METROPOLITAN PLANNING SCHEME 1954

Surveys and Analysis

REPORT SUBMITTED TO THE TOWN PLANNING COMMITTEE

BY E. F. BORRIE, M.C., M.C.E., M.I.E. Aust., F.A.P.I., CHIEF

PLANNER, ON BEHALF OF THE PLANNING STAFF

MELBOURNE AND METROPOLITAN BOARD OF WORKS

MEMBERS OF THE BOARD

Chairman

J. C. JESSOP, J.P.

Commissioners

F. ALWAY, J.P.	G. E. FURNELL, J.P.	J. B. NAUGHTON, J.P.	A. J. G. SINCLAIR, J.P.
W. F. ANGUS, J.P.	J. T. GRAY, M.C., B.C.E.	O. J. NILSEN, J.P.	H. R. SKINNER
W. P. BARRY, M.L.A.	F. HARVEY, J.P.	E. M. PARTON, J.P.	R. H. SOLLY
G. R. BOULTON, J.P.	J. C. HOGAN, J.P.	K. PARLON, J.P.	H. T. SPARKS, J.P.
R. B. CAMPBELL	C. E. HOSKEN, J.P.	W. O. J. PHILLIPS, J.P.	H. C. STANFORD, J.P.
W. G. COLE, LL.B.	A. E. IRELAND	K..G. PUTT	R. W. SYLVESTER, J.P.
W. R. CRICHTON, J.P.	T. KERR, J.P.	C. F. ROOKS	H. TATNALL
D. C. DON, J.P.	H. A. LAYFIELD, J.P.	K. J. ROBINSON, J.P.	L. T. THOMPSON, J.P.
T. I. DUFF	W. R. G. LONGMUIR, J.P.	J. T. RYAN, LL.B.	R. E. TRICKEY, J.P.
A. EDWARDS	H. F. MOGG, J.P.	J. RYAN, J.P.	T. F. WALSH, J.P.
W. ELLIOTT WELLS	J. E. MOORE, J.P.	C. T. R. SAMBELL, J.P.	M. T. WOODRUFF, J.P.
W. A. FORDHAM, J.P.	G. W. V. MINTY, J.P.	M. P. SHEEHY, J.P., M.L.C.	

TOWN PLANNING COMMITTEE

Deputy Chairman

L. T. THOMPSON, J.P.

F. ALWAY, J.P.	H. A. LAYFIELD, J.P.	E. M. PARTON, J.P.
W. P. BARRY, M.L.A.	W. R. G. LONGMUIR, J.P.	A. J. G. SINCLAIR, J.P.
W. G. COLE, LL.B.	O. J. NILSEN, J.P.	H. T. SPARKS, J.P.

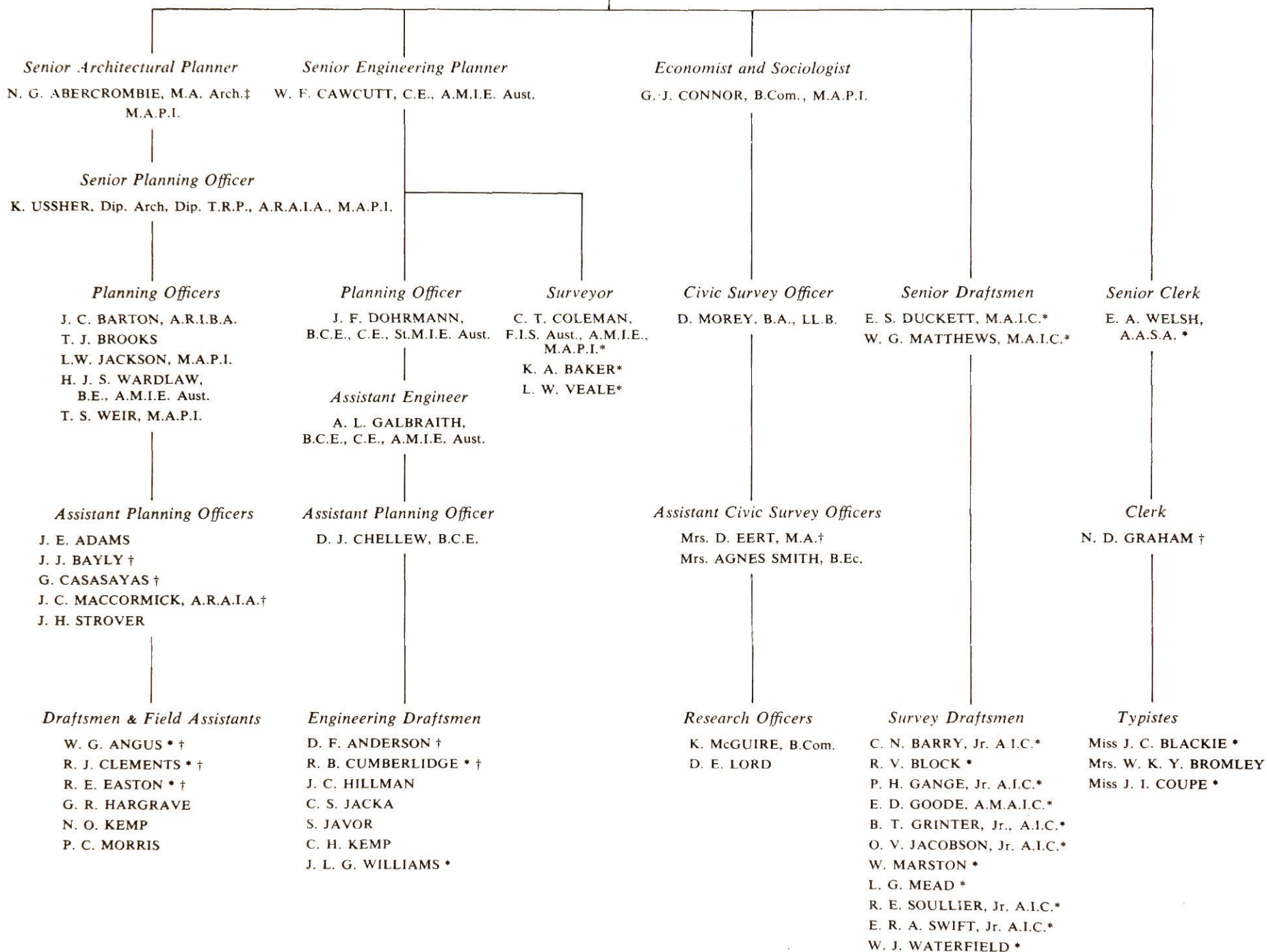
PLANNING ORGANISATION

Chief Planner

E. F. BORRIE, M.C., M.C.E., M.I.E. Aust., F.A.P.I.*

Deputy Chief Planner

G. R. McGOWAN, C.E., F.I.S. Aust., F.A.P.I.* ★



Board's Solicitor

C. G. HOOPER, B.A., LL.B.

Consulting Valuer

A. S. MURRAY, F.C.I.V.

Public Relations Consultants

JOHN and ESTA HANDFIELD

Layout Consultant

N. P. QUAINANCE

* Permanent officer.

† Part time appointment.

‡ Less than 12 months' service.

★ From 1st August, 1950, to 1st April, 1952, Mr. McGowan combined those duties together with those of his permanent position as Chief Surveyor.

The above chart shows all staff whose service exceeded six months. The average staff over the period was 33.