
BLUE HILLS QUARRY – WA7639 COMMUNITY CONSULTATION PLAN v2



	Title	Name	Date
Creator	Resource Development Advisor	A Mawson	14/01/2026

Contents

1	Introduction	3
1.1	Background	3
1.2	Site Description	4
2	Communication and Engagement Activities	5
2.1	Goals	5
2.2	Objectives.....	5
3	Stakeholders	6
3.1	Community Profile	6
3.2	Stakeholder Identification	7
3.3	Stakeholder Analysis.....	8
3.4	Consultation To Date.....	10
4	Consultation Methods	12
5	Schedule of Activities.....	12
6	Evaluation and Review of Community Engagement.....	13
7	Version Control	14

1 Introduction

The Environmental Effects Statement (EES) Consultation Plan for Blue Hills Quarry has been developed in response to item (vi) of the Minister for Planning's decision under Section 8B(3) (a) of the *Environmental Effects Act 1978* (Vic), which requires the proponent (E B Mawson & Sons Pty Ltd) 'to prepare and submit to DTP its proposed EES Consultation Plan for engaging with the public and stakeholders during the preparation of the EES. Once completed to the satisfaction of DTP, the EES consultation plan is to be implemented by the proponent, having regard to advice from DTP and the TRG.'

In October 2025, the Minister for Planning determined that the Blue Hills Quarry project required an EES to assess the potential environmental and social impacts of the project and provide an opportunity for community involvement.

Consultation is a key aspect of the environment assessment process in Victoria. It helps build understanding around the issues and implications of the project. Consultation allows stakeholders' knowledge and views to be considered in both project planning and formal decision making.

This Community Consultation Plan aims to identify key stakeholders, their issues, how they will be informed, consulted and involved during the preparation of the EES and how their views and input will be documented and responded to.

During the EES process there are both formal and informal opportunities for engagement with community and stakeholders.

1.1 Background

Blue Hills Quarry is a proposed hornfels quarry, located in Bradford in the Mount Alexander Shire LGA. The proponent, EB Mawson & Sons Pty Ltd (Mawsons), seeks to quarry high quality hornfels aggregate at Blue Hills to support the population growth and development of the Loddon Campaspe Region.

The proposed quarry would involve a:

- staged development of 34.5 ha;
- 3 ha area for processing, stockpiling, vehicle workshop and office area;
- 4.5 km access road from the quarry site to the Bridgewater-Maldon road via private land; and
- On-site power and water reticulation.

The quarry development would occur in three stages. This allows for a staged native vegetation clearing approach combined with planting across the broader property to minimise the loss of habitat for impacted species as the quarry development proceeds.

Over the life of the project, Mawsons expect to extract approximately 500,000 tonnes per annum (tpa) of hornfels aggregate and employ 6 full time staff. The operational life of the quarry would be 70 to 100 years.

Progressive rehabilitation will be undertaken over the successive operation stages, allowing the site to be re-purposed for environmental conservation.

1.2 Site Description

The proposed quarry is in central Victoria, within a land parcel (SPI: 9~11\PP2216) totalling approximately 345 hectares (ha) in area. Mawsons also own the adjacent 215 ha parcel (10~11\PP2216). The two allotments are locally known as Blue Hills and are located at 910 and 912 Lakeys Road Bradford, Victoria 3463, within the Mount Alexander Shire Local of the allotments, with most of the site to be used as buffer land to manage potential amenity impacts from quarrying activities.

Currently the land is zoned as farming, having historically been used as a timber plantation site, however recent exploration has indicated the presence of hard rock hornfels resources. The quarry is located within the surrounding hills, nearby to the Calder Highway, which links to the Loddon Valley Highway to the north and the Midland Highway to the south. The Wimmera Highway also provides good access to the western region, which means that the site is well placed to service a large market area. Figure 1 indicates the location of the Blue Hills Quarry site and proximately to closest occupied houses and the township of Maldon.

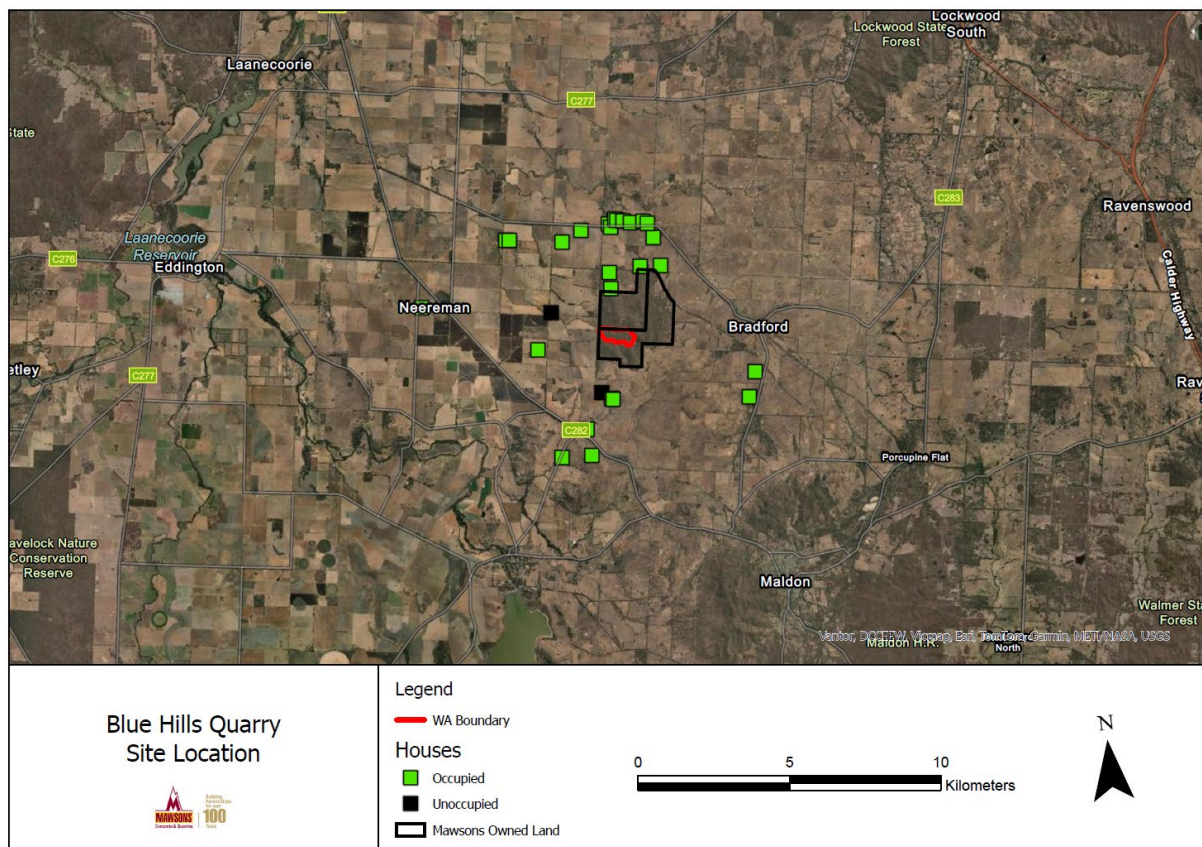


Figure 1 Blue Hills Quarry Site Location

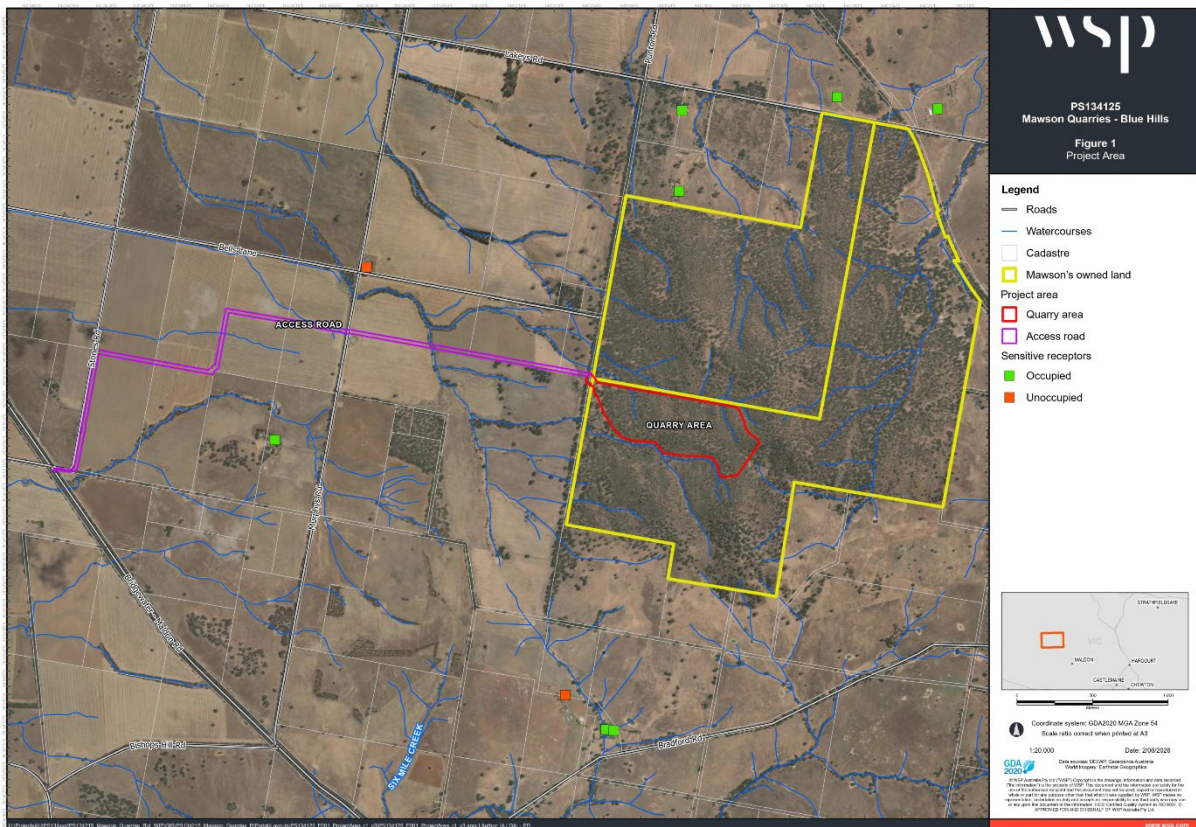


Figure 2 Blue Hills Quarry Project Area

2 Communication and Engagement Activities

The Consultation Plan aims to effectively engage with the community and stakeholders in an open and transparent manner to assist their understanding of and contribution to the project's progress and outcomes.

2.1 Goals

The goals of this plan are to understand and address community concerns while maintaining and improving Mawsons standing in the local community through,

- Identifying stakeholders and the wider community with an interest in the project
- Establishing and maintaining strategies for open and proactive communication by establishing linkages with stakeholders and the wider community and providing opportunities for them to be informed about the project
- Engaging with community and stakeholders to gain an understanding of stakeholder concerns by providing opportunities to capture their views and feedback, and
- Responding to enquiries and feedback in a timely manner

2.2 Objectives

To achieve the goals of this plan, the objectives are to:

- Establish and maintain, through regular review a stakeholder register
- Analyse stakeholder feedback regularly and use the results to modify design,

construction and operational activities and behaviours and rehabilitation outcomes where appropriate and practicable.

- Respond to all enquiries and feedback as soon as practicable after receiving them

3 Stakeholders

3.1 Community Profile

Blue Hills Quarry is located within postal area 3463 within the Mount Alexander Shire LGA, and its area of influence is expected to be within the LGA. The demographics of postal area 3463 and Mount Alexander LGA are summarised in Table 1.

Table 1 Postal Area 3463 and Mount Alexander Shire LGA demographic summary (ABS, 2021)

Area	Item	Response
Postal Area 3463	Population	2,588
	Median age	57
	Number of families	714
	Private dwellings	1,473
	Labour force participation rate	47.8%
	Median weekly household income	\$1,127
	Home ownership (outright or with a mortgage)	86.8%
Mount Alexander LGA	Population	20,253
	Area	1,530 km ²
	Population density	13.2 people/km ²
	Median age	51
	Number of families	5,449
	Private dwellings	10,124
	Labour force participation rate	51.2%
	Median weekly household income	\$1,252
	Home ownership (outright or with a mortgage)	81.9%

The main town in postal area 3463 is Maldon (population 1,665). The main towns in the wider Mount Alexander LGA are Castlemaine (population 7,506), Campbells Creek (population 2,071), and Harcourt (population 1,038).

3.2 Stakeholder Identification

As stated in the *Environment Effects Act 1978 EES Consultation Plan Advisory Note* stakeholders include all parties who are either affected by or have an interest in a project.

Stakeholders have been identified as follows:

Table 2 Stakeholder Identification

Agency	Community
Earth Resources Regulator Department of Transport & Planning DEECA North Central Catchment Management Authority Heritage Victoria Environmental Protection Authority (EPA) Goulburn Murray Water CFA	Adjacent landowners and residents CFA Dja Dja Wurrung Clans Aboriginal Corporation (DDWCAC) Baringhup Landcare Group Maldon Community (including local social media groups) Broader community within Mount Alexander Shire (including local social media groups) Tarrangower Times Baringhup News Local media (e.g. ABC, Central Vic)

3.3 Stakeholder Analysis

Table 3 Stakeholder Analysis

Stakeholder Group	Level of Engagement	Issues and Concerns, Areas of Interest
Adjacent Landholders and Residents	Inform/ Involve	Operational activities including noise, dust and truck routes, water availability, habitat removal, land values, rehabilitation process
Maldon community	Inform/ Involve	Truck routes, operational activities including noise and dust, water availability, habitat removal, land values, rehabilitation process
Mount Alexander Shire community	Inform/ Involve	Truck routes, operational activities including noise and dust, water availability, habitat removal, land values, rehabilitation process
Baringhup Landcare Group	Inform/Involve	Operational activities including noise, dust and truck routes, habitat removal, impacts on fauna, access to bird watching on property.
Dja Dja Wurrung Clans Aboriginal Corp.	Inform/ Involve	Heritage management
CFA	Inform/ Involve/	Access tracks for fire trucks, water, vegetation management, fire breaks, operational fire risk controls
Tarrangower Times	Inform	Publication of community information
Baringhup News	Inform	Publication of community information
Earth Resources Regulator	Inform/Involve/ Consult	Approvals and compliance Commitment to act on environmental compliance.
Dep Transport and Planning	Inform/Involve/ Consult	Approvals and compliance
Heritage Victoria	Inform/Involve/ Consult	Approvals and compliance, cultural heritage values
DEECA	Inform/Involve/ Consult	Approvals and compliance
North Central CMA	Inform/Involve/ Consult	Approvals and compliance Water, vegetation
EPA	Inform/Involve/ Consult	Approvals and compliance Pollution – Dust, Noise, Sediment runoff
Goulburn Murray Water	Inform/Involve/ Consult	Approvals and compliance Water
Mt Alexander Shire	Inform/Involve/ Consult	Land use and offsite impacts, truck routes, planning issues, local employment, economic benefits to region

3.4 Consultation To Date

Community Engagement for the Blue Hills Quarry began in July 2021 with an information session on site. Since then, community sessions have been run annually with presentations from technical experts and Mawsons staff who were on hand to answer any concerns raised. These sessions have been advertised in local newspapers *The Tarrangower Times* and the *Baringhup News*. Letter drops to landowners adjacent to the site also took place. Between sessions, Mawsons staff have spent time one-on-one with individuals who have expressed concerns about the impacts of the project. On several occasions, additional information sessions were run, for those who were unable to attend the community days, at Mawsons' office in Bendigo.

Table 4 Prior Engagement Activities

Stakeholder	What was discussed	Why were they engaged	When did engagement take place
The Mount Alexander Shire	Land use and offsite impacts Traffic, roads	Planning approvals EES	Commencement and at various occasions since
ERR	Approvals Compliance	Work Authority approvals EES	Commencement and at various occasions since EES site visit – 26/05/2026
DTP	Approvals Compliance	Planning Approvals, EES	Commencement and various occasions since EES kick-off meeting – 29/04/2026 EES site visit – 26/05/2026
Adjacent landowners and residents	Operational activities including noise, dust and truck routes	Proximity to activity and/or direct complaint or enquiry	Ongoing since operations commenced, community meetings, one-on-one conversations
North Central Catchment Management Authority	Water licencing – management of water supply catchment	Water licencing EES	Initial WA site meeting – 14/07/2021 Ongoing to discuss concern / solutions EES site visit – 26/05/2026
DEECA	WA -planning flora and fauna	WA application EES	Initial WA site meeting EES site visit – 26/05/2026
Heritage Victoria	WA – heritage management and protection	WA application EES	Apology for WA initial site meeting – 14/07/2021 EES site visit – 26/05/2026
Dja Dja Wurrung Clans Aboriginal Corporation (DDWCAC)	WA – heritage management and protection	Registered Aboriginal Corporation	At site visit during 2023, ongoing
Environmental Protection Agency (EPA)	WA – water discharge/noise/ dust	Discharge licencing EES	Initial WA site meeting – 14/07/2021 Ongoing to discuss concern / solutions EES site visit – 26/05/2026
Goulburn Murray Water	WA - water groundwater use or management	Water licencing	Initial WA site meeting - 14/07/2021 Ongoing to discuss concern / solutions
CFA	Fire Risk	Community concern EES	Commencement and various occasions since EES site visit – 26/05/2026
Baringhup Landcare Group	Habitat Loss, access to bird watching	Interested in the ecology of the site	Commencement and various occasions since
Maldon Community	Truck routes around Maldon	Expressed concerns	At community information session 2024

Table 5 Community Information Sessions to date.

Date/Venue/ Attendees	Topics Presented	Concerns raised
July 2021 On site 30+	Introduction to the project Description of the approval process	The timing of the project and the size of the proposed Quarry. Transport, questions were asked about what roads would be used. Public amenity.
December 2021 On site 30+	Approval process Haul road options Dust Management Ecology Surveys Geology Processing Plant Waterway Determination	Ground water Dust and noise, from northern landholders. One of the environmental groups had questions about our weed control mainly based around cactus.
November 2022 On site 40+	Pit Design Flora and Fauna Heritage Noise modelling Dust Deposition Rehabilitation Surface water	Silica Dust – not a risk to those outside the quarry Noise – modelling shows levels are below criteria. Ecology – ongoing ecological assessments Surface and Ground water
July 2023 On site 35+	EES / EPBC approval processes Land management activity-fencing, tree hollows, tree planting, weed control	At this meeting we discussed the approval process. Transport, truck routes, haul roads. Dust and noise modelling Land management, flora and fauna, weed control
December 2024 Baringhup Community Hall 50+	Changes to haul routes Transport routes through surrounding towns Ongoing Ecological surveys EES process, habitat offsets	Many concerns raised about transport routes through Maldon. Explanation of diversion routes for Mawsons trucks

4 Consultation Methods

A variety of engagement techniques and communications channels have been used and will continue to be in order to meet the goals and objectives of this plan. These will include:

- One on one engagement.
- Where appropriate the distribution of written information (letter drops, public notices, etc.).
- Routine meetings for groups of stakeholders, including the Shire.
- The scheduling of specific meetings or forums associated with individual issues when required.
- Responding to enquiries and complaints.
- Media Releases, including social media posts and engagement.
- Mawsons' Website.

During each engagement activity, Mawsons will clearly communicate:

- The purpose of the engagement.
- The aspects of the project that stakeholders can influence.
- The aspects that are prescribed or constrained.
- How stakeholder input can inform the project.

Feedback will be collected and recorded in a community feedback database, which will record:

- Stakeholder details.
- Key issues raised.
- Date and method of engagement.
- Any requested actions or follow-up.

The attitudes and issues recorded in the community feedback database will be regularly reviewed. Outcomes of stakeholder engagement will be communicated via:

- Direct responses to stakeholders where appropriate.
- Updates during subsequent engagement activities.
- Project communications (e.g. website updates, newsletters).
- Reporting to the Technical Reference Group (TRG) as part of regular project updates and EES documentation.

5 Schedule of Activities

The following stakeholder engagement plan has been developed to respond to the issues identified in the stakeholder issues analysis.

This plan has been developed in line with the International Association for Public Participation (IAP2) best practice.

Table 6 Scheduled Activities

Stakeholder	Issue	Level of engagement (IAP2)	Key message	Method of engagement	Timing (weekly, monthly, as required)
Community Groups,	Noise	Inform/Involve	Project updates, presentation of new	Community meetings	As required

adjacent land holders, Maldon Community, Media, Local government	Dust Blasting Habitat Removal Project timelines Truck routes		information gathered by consultants, plans	Mawsons website Media Release Phone calls	
State and Local Government, Dja Dja Wurrung Clans AC, CFA, Goulburn Murray Water	EES Process Environment Effects Compliance	Inform/ Consult/ Involve	Project Updates, ongoing technical studies and TRG review	Face to face meeting (including TRG meetings) Phone calls Email communications TRG review process	As required

Mawsons will facilitate key consultation activities for the EES, which will occur during key stages of the EES process as summarised in Table 7.

Table 7 EES consultation approach

EES stage	Key EES activities	Consultation	Method of engagement	Timing
EES scoping	Draft scoping requirements available for public comment for at least 15 business days Final scoping requirements published on DTP website	Provide information about the draft scoping requirements Provide opportunity for community and stakeholders to provide feedback on the scoping requirements.	Community meetings Mawsons website update Media release Phone calls and email communications	19 June – 10 July 2026
EES preparation	Preparation Completion of EES technical studies	Provide information about the project and Technical Studies including existing conditions, assessment methods, impacts and mitigation measures Provide opportunity for communities and stakeholders to discuss the project and give feedback.	Community meetings Mawsons website update Media release Phone calls and email communications	As required
Public review	Exhibition of EES Submissions made on EES. Independent Assessment Panel considers submissions.	Public Exhibition of EES Provide information about the EES exhibition and how to make submissions Receive submissions Support Independent Assessment Panel to consider submissions, public hearing	Community meetings Mawsons website update Media release Phone calls and email communications	TBC
Assessment	Preparation of inquiry report Minister's assessment	Provide update on EES progress, results and next steps	Community meetings Mawsons website update Media release Phone calls and email communications	TBC

6 Evaluation and Review of Community Engagement

The Consultation Engagement Plan will be treated as a live document and will be reviewed and updated at key project milestones, including:

- Following completion of key EES technical studies.
- Prior to major engagement phases (e.g. exhibition).
- Following TRG feedback.
- Where significant project changes or emerging issues arise.

Evaluation will consider:

- Level and diversity of stakeholder participation, as recorded in the community feedback database.
- Quality and relevance of feedback received.
- Responsiveness to stakeholder concerns.
- Stakeholder satisfaction with engagement processes (where practicable).

Findings from this evaluation will be used to refine the consultation processes and inform potential improvements. Any updates to the consultation processes will be:

- Included in this Community Engagement Plan. Updated versions to the Plan will be recorded in the Version Control table in Section 7.
- Communicated to stakeholders and the TRG as appropriate.

7 Version Control

Version	Date	Comments
V1	14 January 2026	Draft
V2	17 June 2026	Updated in response to TRG comments