

### Legend

#### Biosis Research Current Assessment

- Golden Sun Moth targeted survey
- Growling Grass Frog targeted survey
- Plains-wanderer, Fat-tailed Dunnart & Grassland Earless Dragon targeted survey

#### Study Area

- Site 1
- Site 2

#### Biosis Research Previous Assessment

- GSM records 2006
- GSM targeted search 2006

Figure 6a: Targeted fauna search areas, Site 1, Ravenhall

0 25 50 75 100 125

Metres

Scale: 1:2,500 @ A3

Coordinate System: GDA 1994 MGA Zone 55

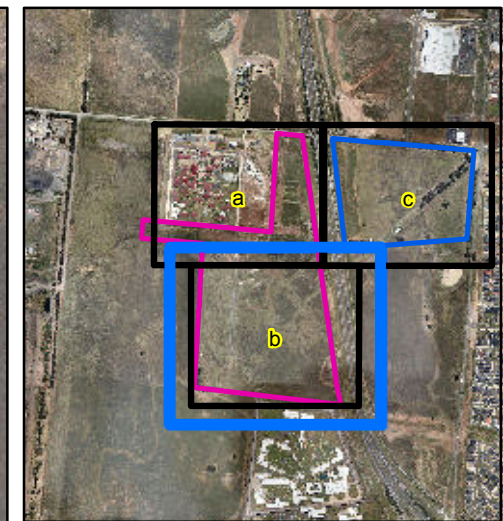


Biosis Research Pty. Ltd.  
38 Bertie Street  
(PO Box 489)  
Port Melbourne  
VICTORIA 3207

Offices also in: Ballarat, Sydney, Wollongong, Canberra, Wangaratta & Brisbane



Matter: 13993  
Date: 26 November 2012,  
Checked by: CPM, Drawn by: PJY/JMS  
Location: P:\13900s\13993\Mapping\ReferralMaps\13993\_Ref\_F6\_261112.mxd



**Legend**

**Biosis Research Current Assessment**

- Golden Sun Moth targeted survey
- Growing Grass Frog targeted survey
- Plains-wanderer, Fat-tailed Dunnart & Grassland Earless Dragon targeted survey

**Study Area**

- Site 1
- Site 2

**Biosis Research Previous Assessment**

- GSM records 2006
- GSM targeted search 2006

Figure 6b: Targeted fauna search areas, Site 1, Ravenhall

0 25 50 75 100 125  
Metres

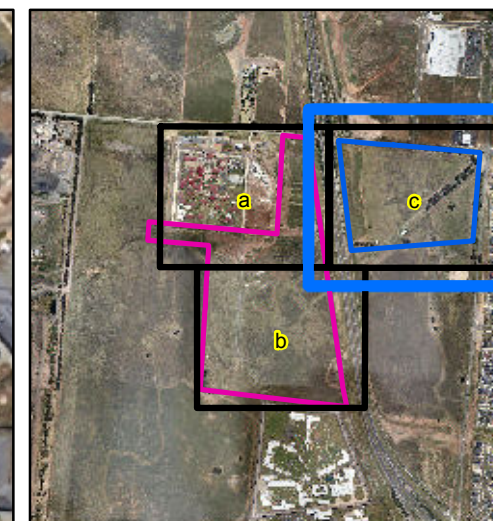
Scale: 1:2,500 @ A3  
Coordinate System: GDA 1994 MGA Zone 55

**Biosis Research Pty. Ltd.**  
38 Bertie Street  
(PO Box 489)  
Port Melbourne  
VICTORIA 3207

Offices also in: Ballarat, Sydney, Wollongong, Canberra, Wangaratta & Brisbane

**BIOSIS**  
RESEARCH

Matter: 13993  
Date: 26 November 2012,  
Checked by: CPM, Drawn by: PJY/JMS  
Location: P:\13900s\13993\Mapping\ReferralMaps\13993\_Ref\_F6\_261112.mxd



### Legend

#### Biosis Research Current Assessment

- Golden Sun Moth targeted survey
- Growling Grass Frog targeted survey
- Plains-wanderer, Fat-tailed Dunnart & Grassland Earless Dragon targeted survey

#### Study Area

- Site 1
- Site 2

#### Biosis Research Previous Assessment

- GSM records 2006
- GSM targeted search 2006

Figure 6c: Targeted fauna search areas, Site 2, Ravenhall

0 25 50 75 100 125

Metres

Scale: 1:2,500 @ A3

Coordinate System: GDA 1994 MGA Zone 55



Biosis Research Pty. Ltd.  
38 Bertie Street  
(PO Box 489)  
Port Melbourne  
VICTORIA 3207

Offices also in: Ballarat, Sydney, Wollongong,  
Canberra, Wangaratta & Brisbane



Matter: 13993  
Date: 26 November 2012,  
Checked by: CPM, Drawn by: PJY/JMS  
Location: P:\139008\13993\Mapping\Referral\13993\_Ref\_F6\_261112.mxd