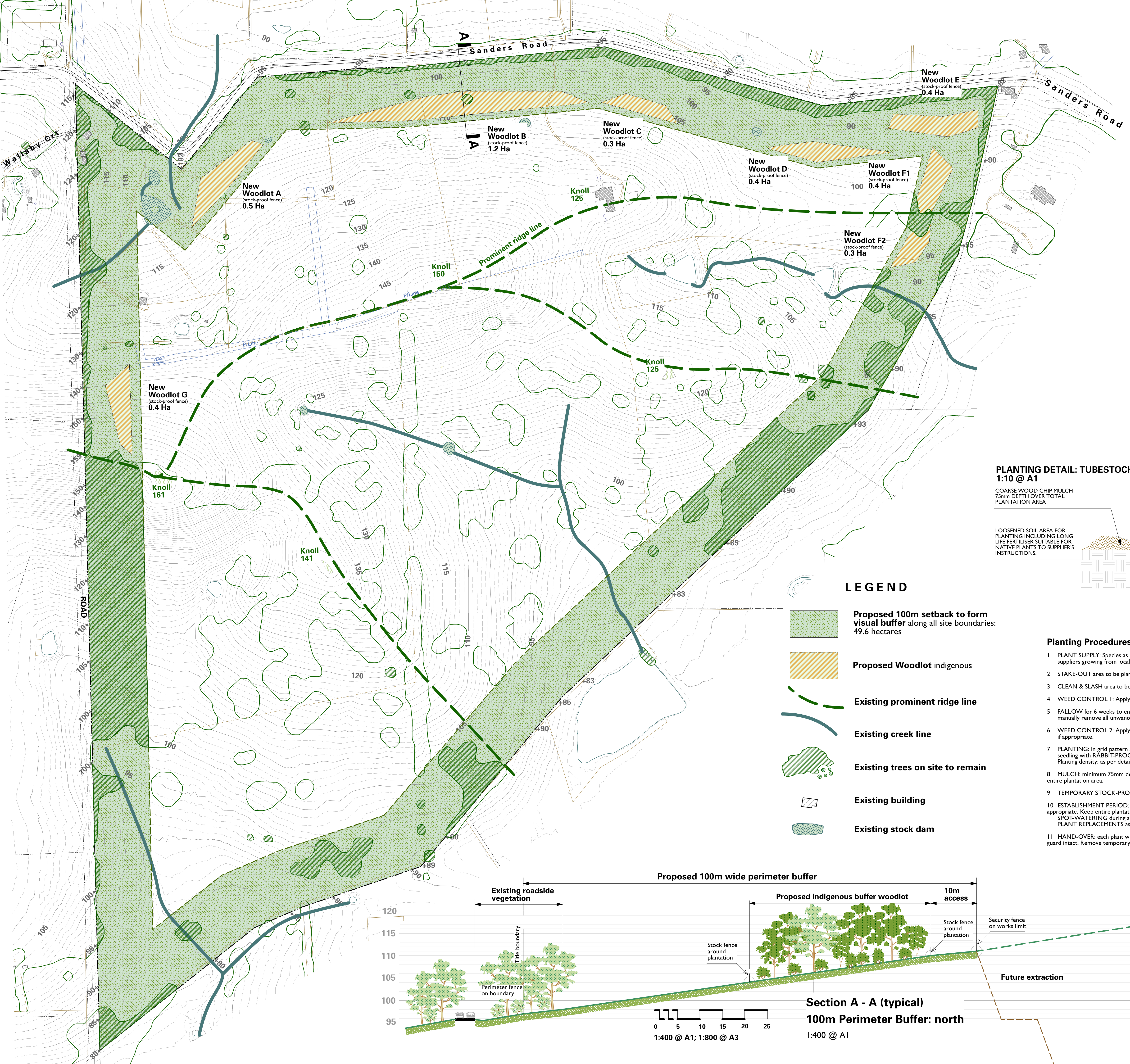


5. Attachment E – Indicative Landscape Buffer Plan of Extraction Site



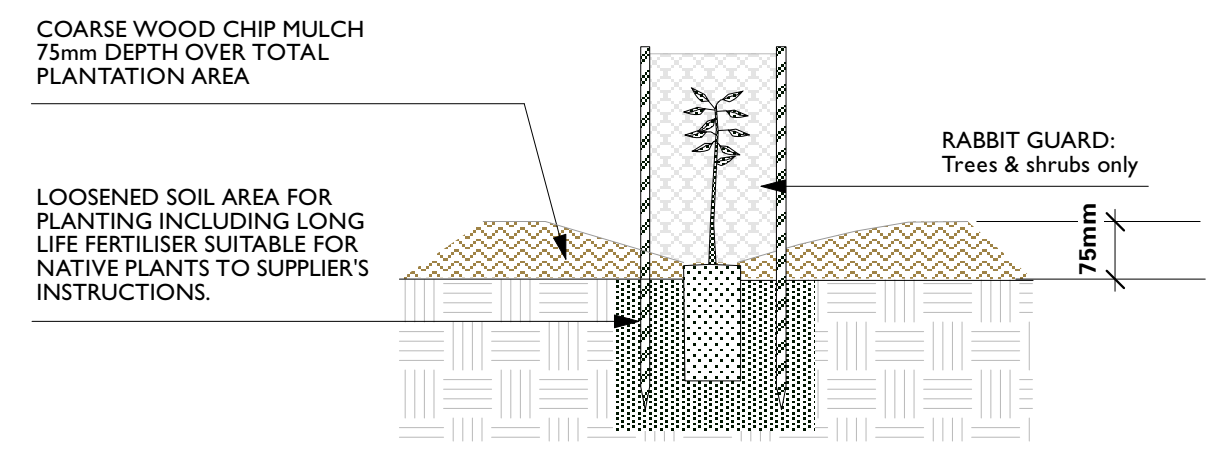
EVC 16: LOWLAND FOREST*: Garfield North
SPECIES SCHEDULE (2581/3)
 Plants for the woodlot plantations will be selected from among the following indigenous species, propagated from locally collected seed.

BOTANICAL NAME	Common Name	Approx mature Ht	Qty Spr	Qty
Upper Canopy (>5m mature height)				
ACACIA MELANOXYLON	Blackwood	8+	4+	85
EUCALYPTUS OBLIQUA	Messmate Stringybark	12+	8+	250
EUCALYPTUS RADIATA	Narrow-leaf Peppermint	12+	8+	250
				Total
585				
Middle Storey (2-4m mature height)				
ACACIA VERTICILLATA	Prickly Moses	4+	4+	130
KUNZEA ERICOIDES	Burgan	3+	3	130
LEPTOSPERMUM CONTINENTALE	Prickly Tea-tree	3	2+	130
				Total
390				
Lower shrubs & grasses (<1m mature height)				
EPACRIS IMPRESSA	Common Heath	1	0.8	400
LEUCOPOGON VIRGATUS	Common Beard-heath	1	0.5	400
LOMANDRA FILIFORMIS	Wattle Mat-rush	0.7	0.7	800
LOMANDRA LONGIFOLIA	Spiny-headed Mat-rush	0.7	0.7	920
MICROLAENA STIPOIDES	Weeping Grass	0.5	0.8	600
				Total
3,120				

* = occurs on lowland plains and lower foothill slopes on moderately fertile soils within drier areas on north and east-facing slopes in the Highlands - Southern Fall Bioregion.

WOODLOT No	Area (hectares)	Trees @ 150/ha	Shrubs @ 100/ha	Lower storey @ 800/ha
A	0.5 ha	75	50	400
B	1.2 ha	180	120	960
C	0.3 ha	45	30	240
D	0.4 ha	60	40	320
E	0.4 ha	60	40	320
F1	0.4 ha	60	40	320
F2	0.3 ha	45	30	240
G	0.4 ha	60	40	320
Total	3.9 ha	585	390	3120

PLANTING DETAIL: TUBESTOCK 1:10 @ A1

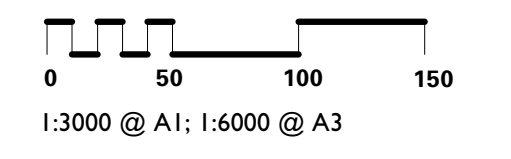


LEGEND

- Proposed 100m setback to form visual buffer along all site boundaries: 49.6 hectares
- Proposed Woodlot indigenous
- Existing prominent ridge line
- Existing creek line
- Existing trees on site to remain
- Existing building
- Existing stock dam

Planting Procedures (typical) Dwg. 2581/3

- 1 PLANT SUPPLY: Species as per Schedule; source tubestock from local suppliers growing from locally collected seed.
- 2 STAKE-OUT area to be planted.
- 3 CLEAN & SLASH area to be planted and its surrounds.
- 4 WEED CONTROL 1: Apply approved non-residual herbicide.
- 5 FALLOW for 6 weeks to encourage weed/grass germination; then manually remove all unwanted weed growth.
- 6 WEED CONTROL 2: Apply approved non-residual herbicide, if appropriate.
- 7 PLANTING: in grid pattern as per detail this sheet; each tree/shrub seedling with RABBIT-PROOF GUARD. No staking. No fertiliser. Planting density: as per detail this sheet.
- 8 MULCH: minimum 75mm depth 'Euca-mulch' or wood chips or approved similar over entire plantation area.
- 9 TEMPORARY STOCK-PROOF FENCE around plantation area if grazing is to occur.
- 10 ESTABLISHMENT PERIOD: 12 months. Continual weed control including herbicides if appropriate. Keep entire plantation mulched and weed-free. SPOT-WATERING during summer months. PLANT REPLACEMENTS as required.
- 11 HAND-OVER: each plant with healthy growth in weed-free mulched plantation. Each guard intact. Remove temporary fence.



Planning Permit Application
 (Shire of Cardinia)

Indicative Landscape Buffer Plan of Extraction Site

Granite Extraction Sanders Road Garfield North (Shire of Cardinia)

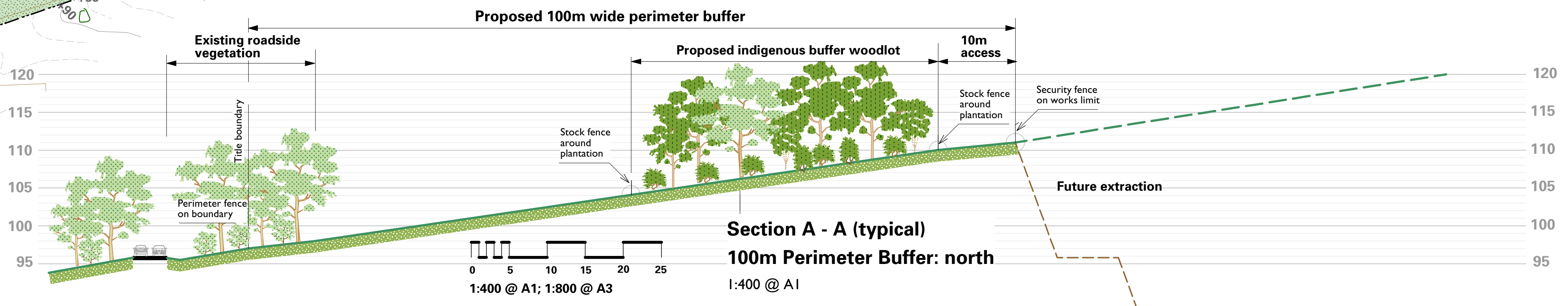
Client:
 Hanson Construction Materials Pty Ltd
 ph 9274 3700

Date 15/10/11
 Scale 1:3000 @ A1
 Drawn S.H.

CAROL Frank-MAS & associates



Landscape Architect
 526 Hawthorn Road,
 Caulfield South Vic 3162
 Tel: 03 9596 2817
 cfm@bigpond.net.au



Dwg.No.
2581/3