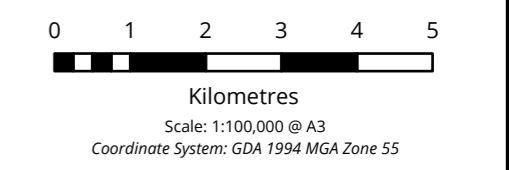


**Legend**

- Study area
- Precinct Structure Plan Boundary**
  - Complete & Approved
  - Yet to be Completed
- PSP Land Use**
  - Residential
  - Town Centre
  - Mixed Use
  - Commercial
  - Industrial
  - Education
  - Community Facilities
  - Local Open Space
  - Conservation
  - Heritage
  - Utility Easement/Corridor
  - Drainage
  - Existing Open Space
  - Rail
  - Government Services
  - Investigation Area
  - Municipal
  - Non-Arterial Road
  - Arterial Road; Existing Developed Land
  - Other
  - Utility Facility
  - Gas pipeline
  - Power transmission

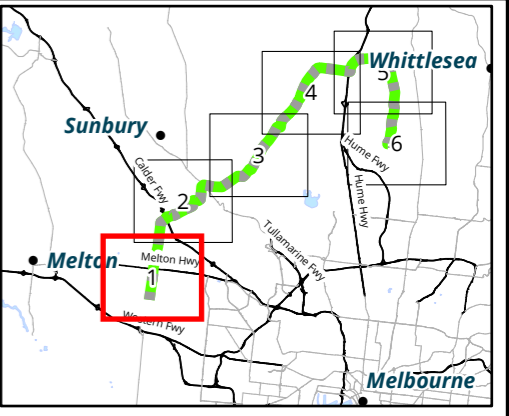
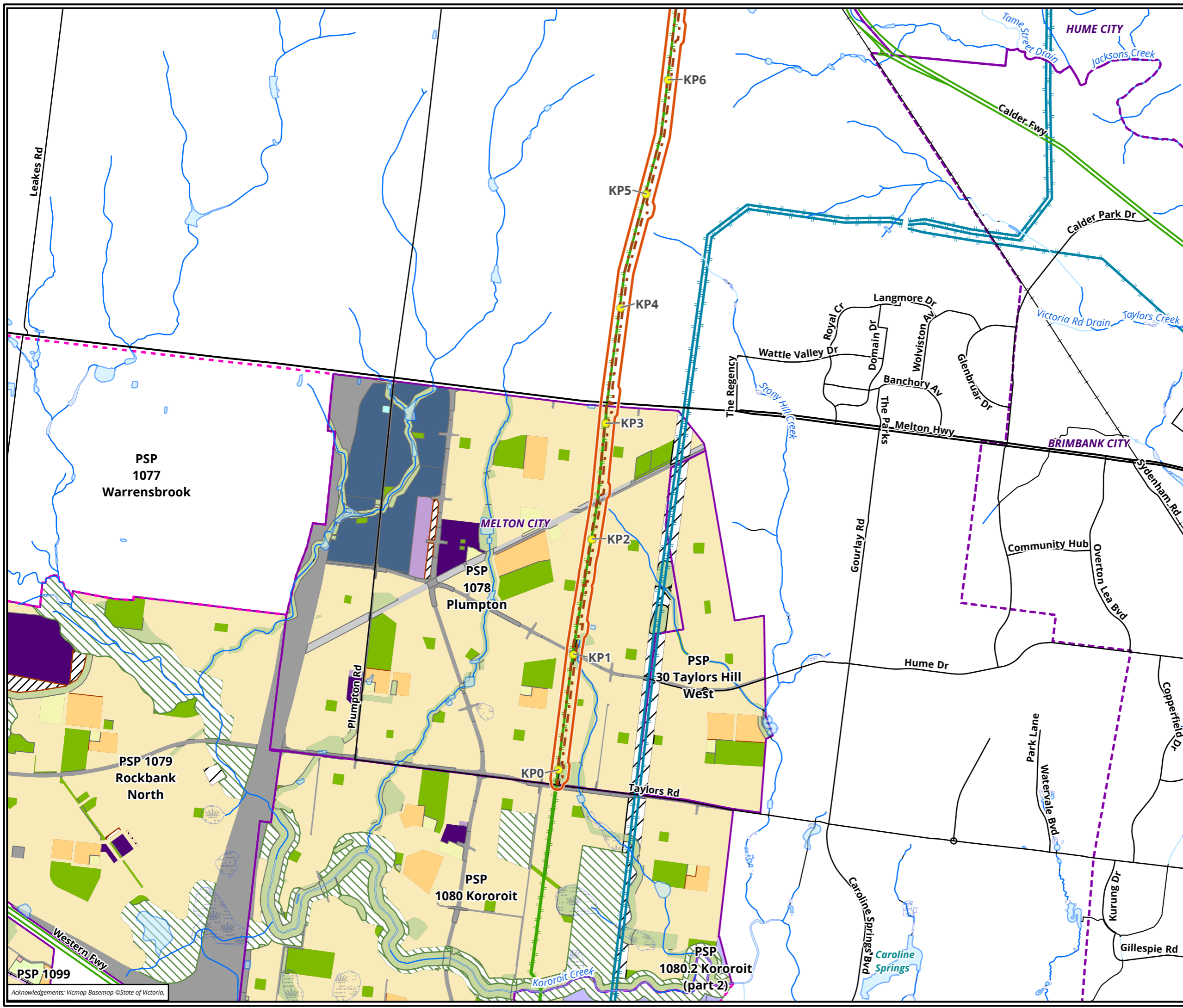
**Figure 3. Overview Study area, and Precinct Structure Plan Land Uses Western Outer Ring Main - Preliminary alignment**



**biosis**  
 Biosis Pty Ltd  
 Albury, Ballarat, Melbourne, Newcastle,  
 Sydney, Wangaratta & Wollongong

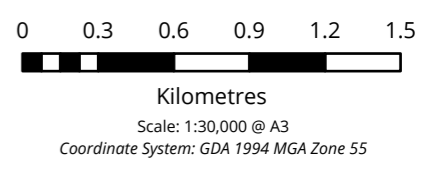
Matter: 29803,  
 Date: 06 June 2019,  
 Checked by: ERN/WH, Drawn by: , Last edited by: dkazemi  
 Location:\bio-data-01\matters5

Acknowledgements: Vicmap Basemap ©State of Victoria,



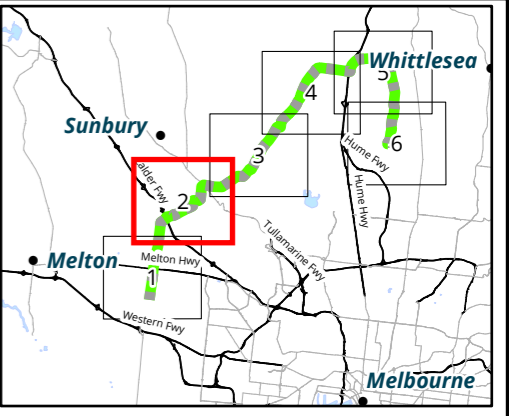
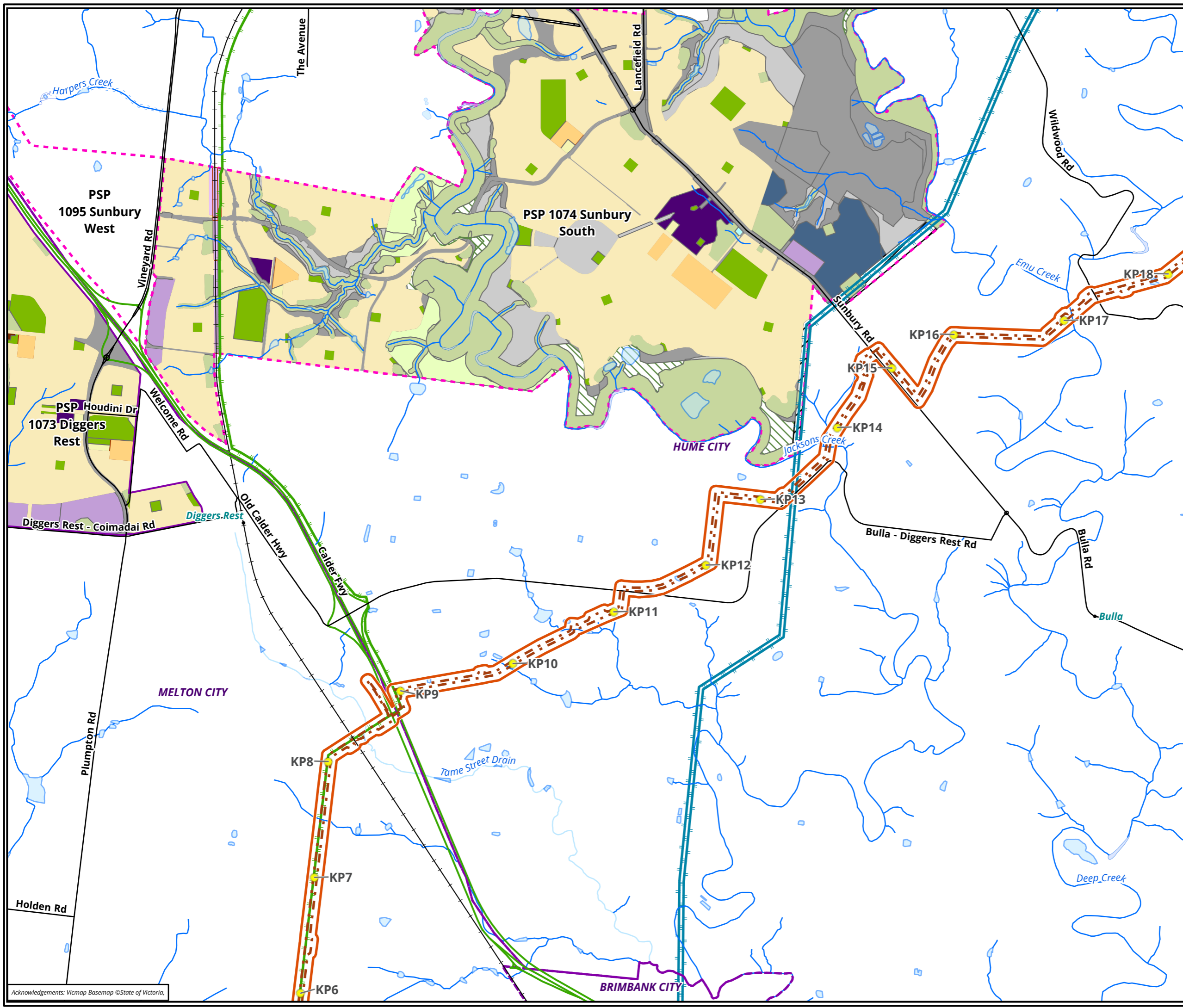
- Legend**
- Study area
  - Kilometre Point
  - Construction footprint
  - Precinct Structure Plan Boundary**
  - Complete & Approved
  - Yet to be Completed
  - PSP Land Use**
  - Residential
  - Town Centre
  - Mixed Use
  - Commercial
  - Industrial
  - Education
  - Community Facilities
  - Local Open Space
  - Conservation
  - Utility Easement/Corridor
  - Drainage
  - Existing Open Space
  - Rail
  - Government Services
  - Municipal
  - Non-Arterial Road
  - Arterial Road; Existing Developed Land
  - Other
  - Utility Facility
  - Gas pipeline
  - Power transmission

**Figure 3.1 Study area, and Precinct Structure Plan Land Uses**  
**Western Outer Ring Main - Preliminary alignment**



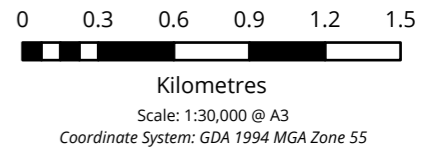
Matter: 29803,  
 Date: 06 June 2019,  
 Checked by: ERN/WH, Drawn by: , Last edited by: dkazemi  
 Location: \\bio-data-01\matters\5

Acknowledgements: Vicmap Basemap ©State of Victoria,



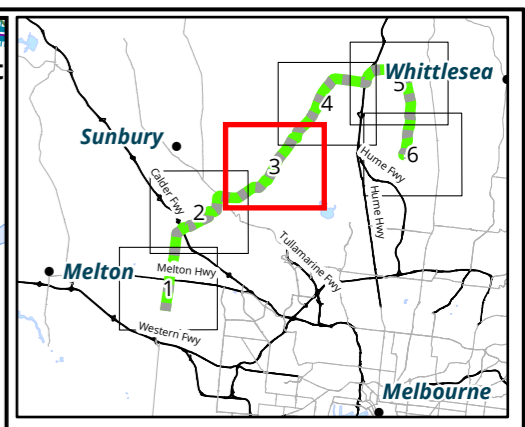
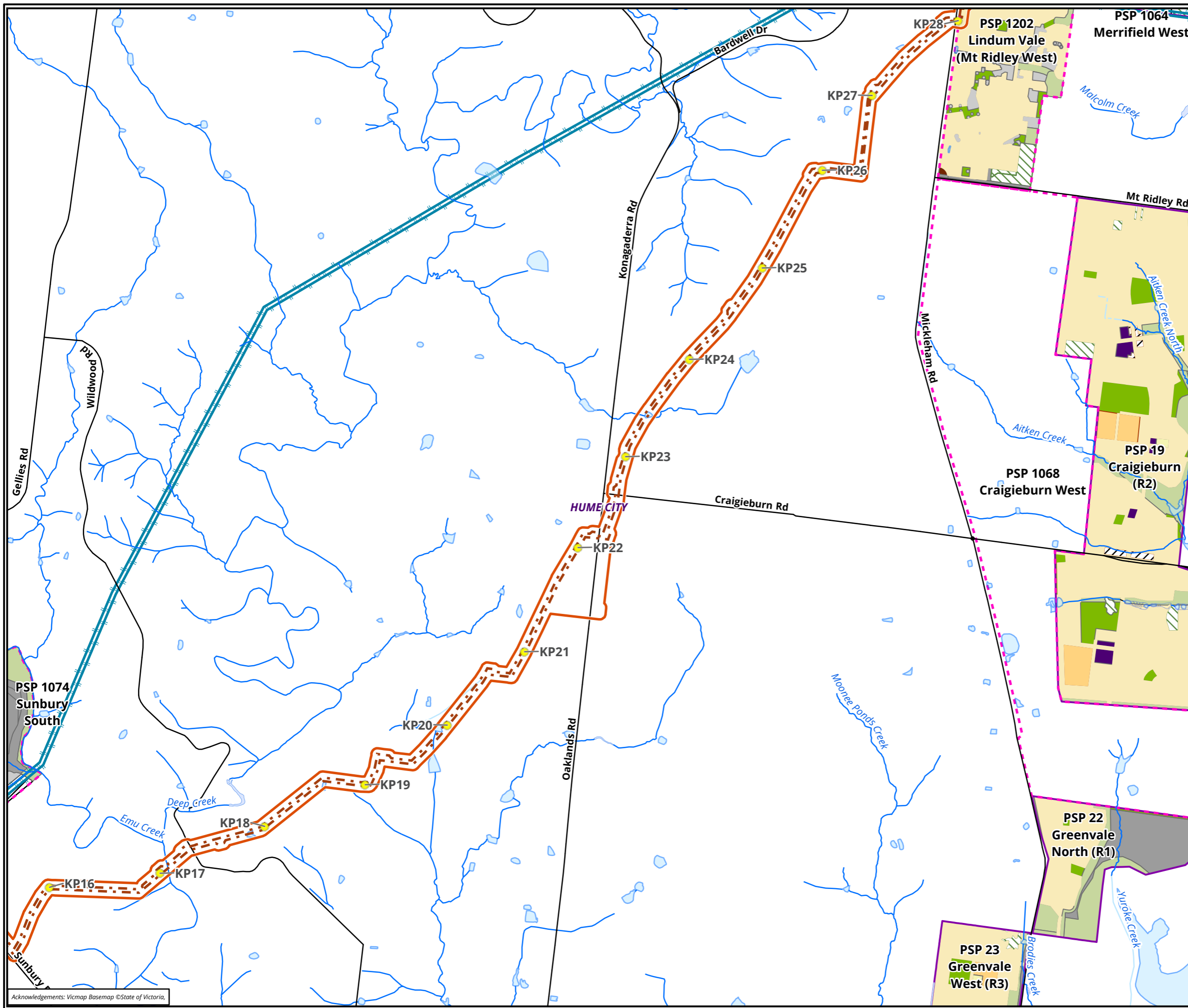
- Legend**
- Study area
  - Kilometre Point
  - Construction footprint
  - Precinct Structure Plan Boundary**
  - Complete & Approved
  - Yet to be Completed
  - PSP Land Use**
  - Residential
  - Town Centre
  - Commercial
  - Industrial
  - Education
  - Community Facilities
  - Local Open Space
  - Conservation
  - Heritage
  - Utility Easement/Corridor
  - Drainage
  - Existing Open Space
  - Rail
  - Investigation Area
  - Non-Arterial Road
  - Arterial Road; Existing Developed Land
  - Other
  - Utility Facility
  - Gas pipeline
  - Power transmission

**Figure 3.2 Study area, and Precinct Structure Plan Land Uses**  
**Western Outer Ring Main - Preliminary alignment**



Matter: 29803,  
 Date: 06 June 2019,  
 Checked by: ERN/WH, Drawn by: , Last edited by: dkazemi  
 Location: \\bio-data-01\matters\$

Acknowledgements: Vicmap Basemap ©State of Victoria,



**Legend**

- Study area
- Kilometre Point
- Construction footprint

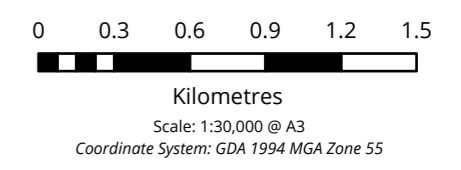
**Precinct Structure Plan Boundary**

- Complete & Approved
- Yet to be Completed

**PSP Land Use**

- Residential
- Town Centre
- Mixed Use
- Education
- Community Facilities
- Local Open Space
- Conservation
- Heritage
- Utility Easement/Corridor
- Drainage
- Investigation Area
- Arterial Road; Existing Developed Land
- Other
- Power transmission

**Figure 3.3 Study area, and Precinct Structure Plan Land Uses**  
**Western Outer Ring Main - Preliminary alignment**

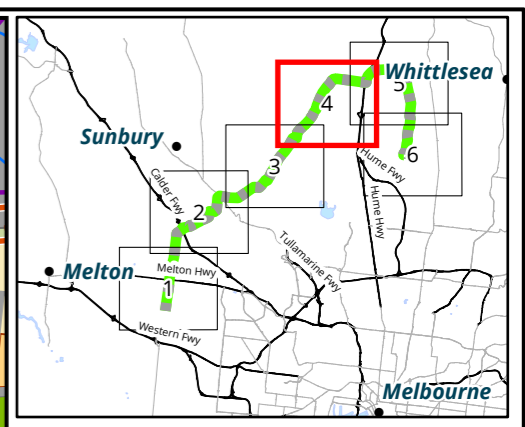
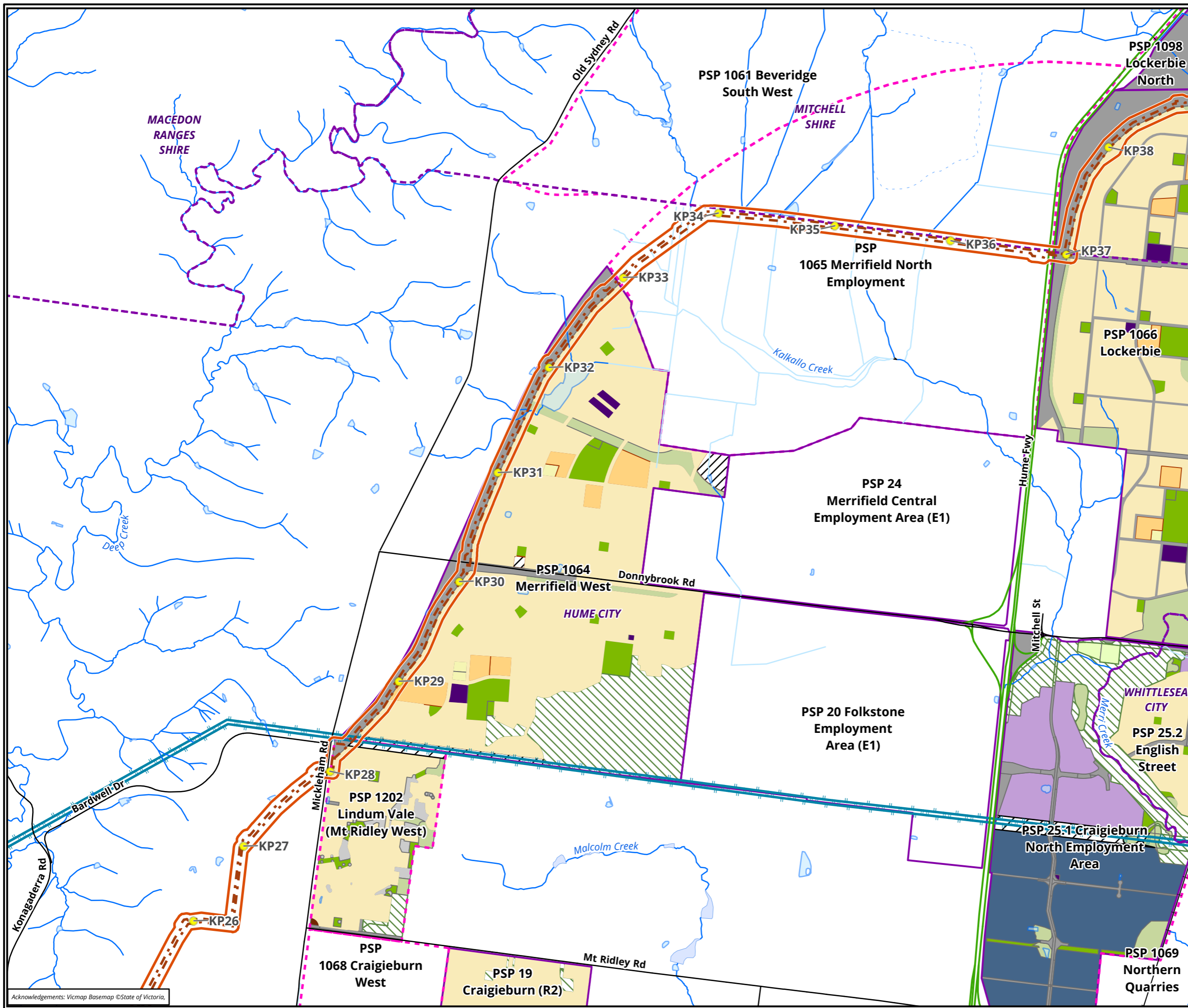


**biosis**

Biosis Pty Ltd  
 Albury, Ballarat, Melbourne, Newcastle,  
 Sydney, Wangaratta & Wollongong

Matter: 29803,  
 Date: 06 June 2019,  
 Checked by: ERN/WH, Drawn by: , Last edited by: dkazemi  
 Location: \bio-data-01\matters5

Acknowledgements: Vicmap Basemap ©State of Victoria,



**Legend**

- Study area
- Kilometre Point
- Construction footprint

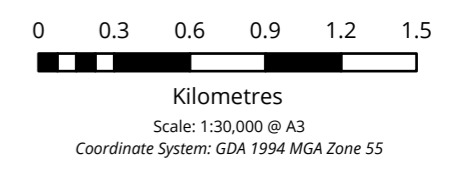
**Precinct Structure Plan Boundary**

- Complete & Approved
- Yet to be Completed

**PSP Land Use**

- Residential
- Town Centre
- Mixed Use
- Commercial
- Industrial
- Education
- Community Facilities
- Local Open Space
- Conservation
- Heritage
- Utility Easement/Corridor
- Drainage
- Existing Open Space
- Non-Arterial Road
- Arterial Road; Existing Developed Land
- Other
- Power transmission

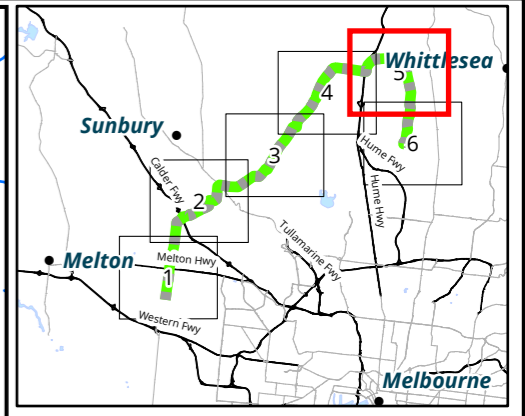
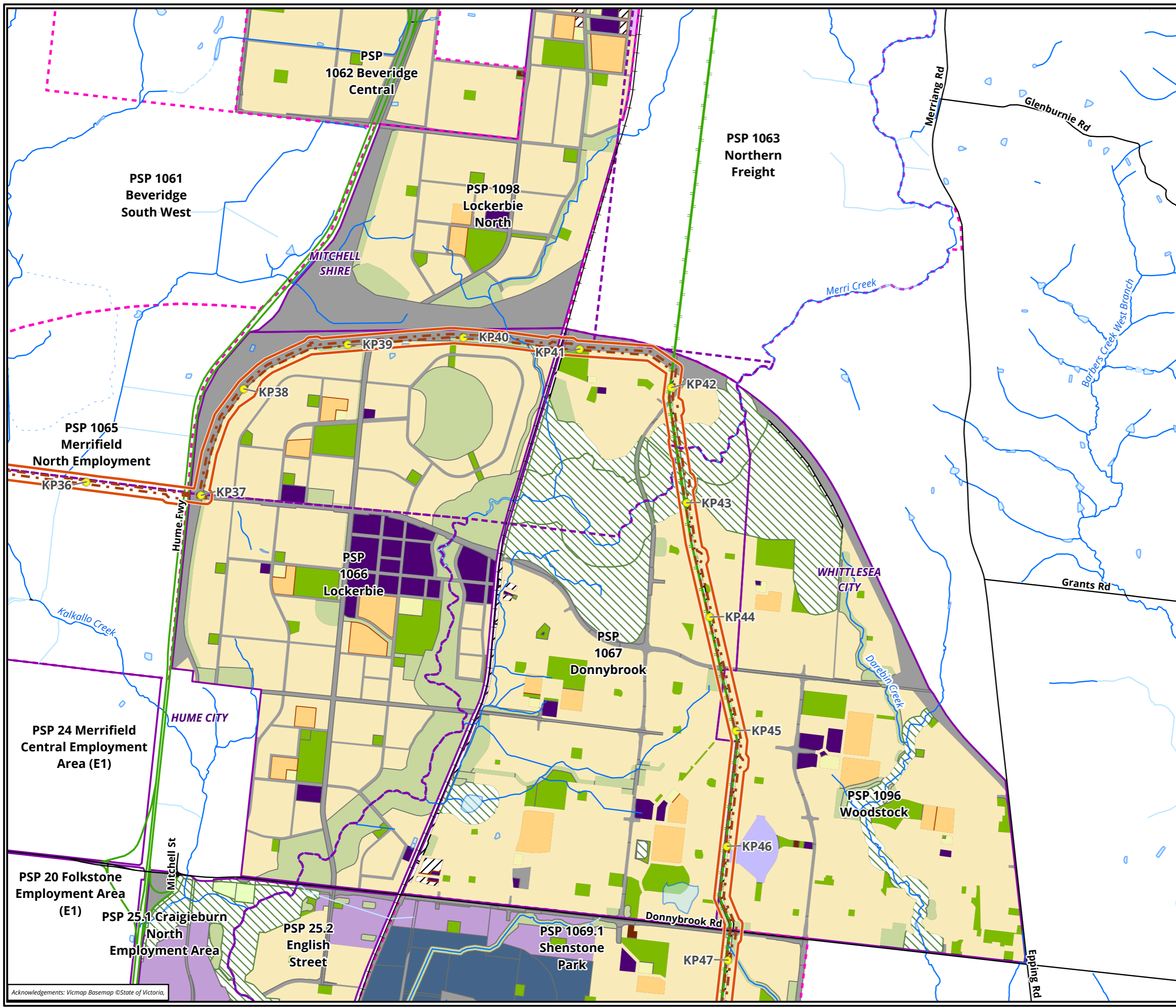
**Figure 3.4 Study area, and Precinct Structure Plan Land Uses**  
**Western Outer Ring Main - Preliminary alignment**



**biosis**  
 Biosis Pty Ltd  
 Albury, Ballarat, Melbourne, Newcastle,  
 Sydney, Wangaratta & Wollongong

Matter: 29803,  
 Date: 06 June 2019,  
 Checked by: ERN/WH, Drawn by: , Last edited by: dkazemi  
 Location: \\bio-data-01\matters5

Acknowledgements: Vicmap Basemap ©State of Victoria,



**Legend**

- Study area
- Kilometre Point
- Construction footprint

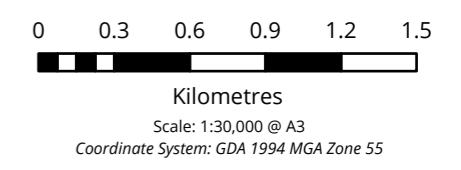
**Precinct Structure Plan Boundary**

- Complete & Approved
- Yet to be Completed

**PSP Land Use**

- Residential
- Town Centre
- Mixed Use
- Commercial
- Industrial
- Education
- Community Facilities
- Local Open Space
- Conservation
- Heritage
- Utility Easement/Corridor
- Drainage
- Existing Open Space
- Rail
- Municipal
- Non-Arterial Road
- Arterial Road; Existing Developed Land
- Utility Facility
- Gas pipeline

**Figure 3.5 Study area, and Precinct Structure Plan Land Uses**  
**Western Outer Ring Main - Preliminary alignment**

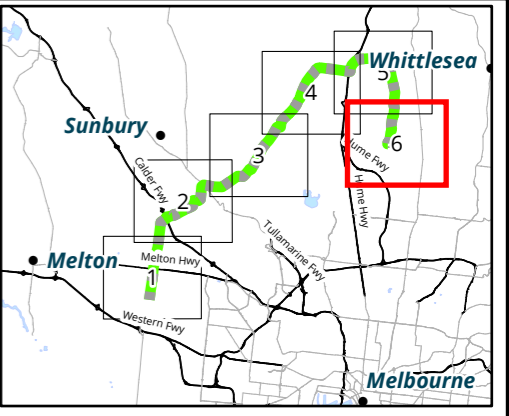
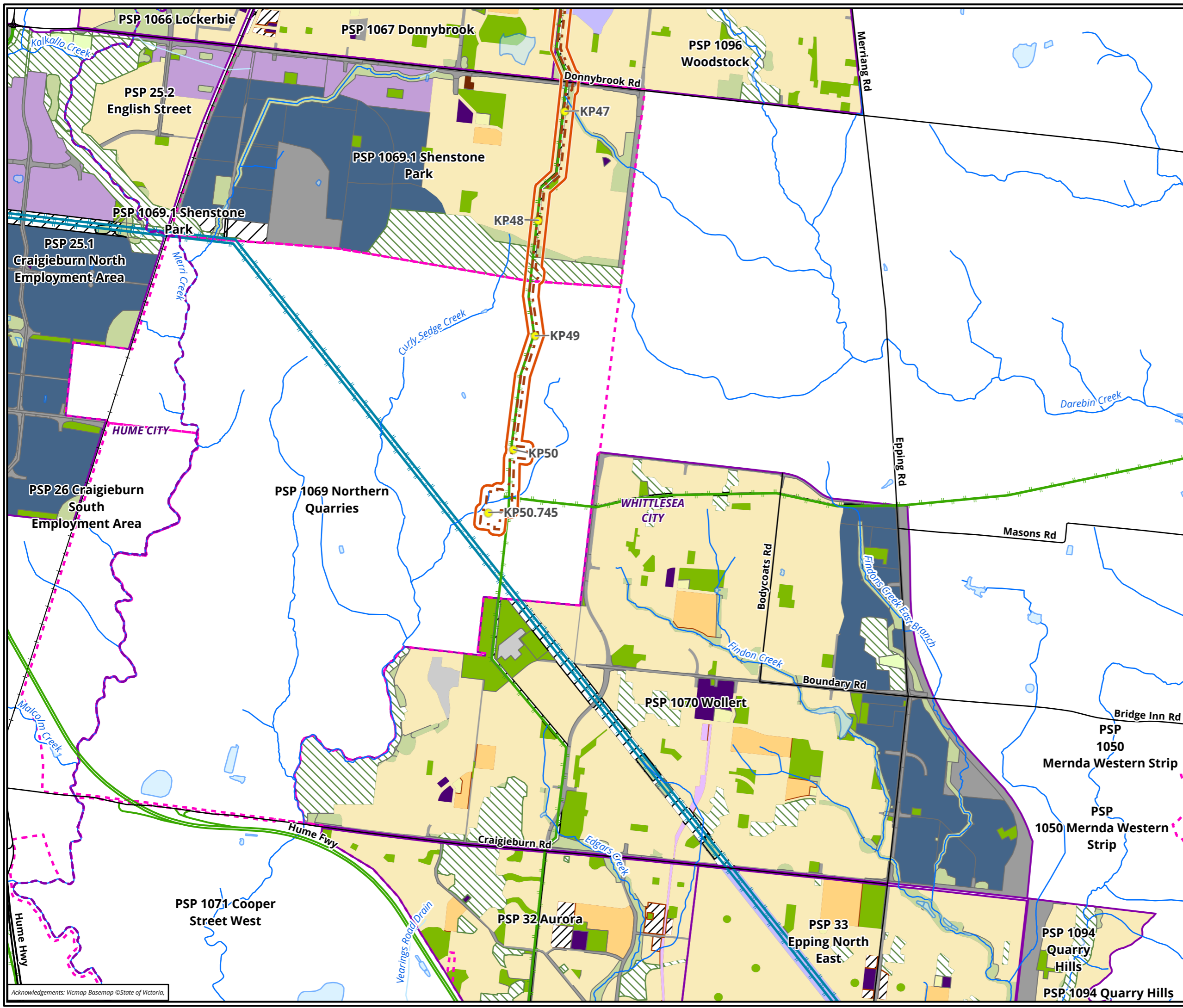


**biosis**

Biosis Pty Ltd  
 Albury, Ballarat, Melbourne, Newcastle,  
 Sydney, Wangaratta & Wollongong

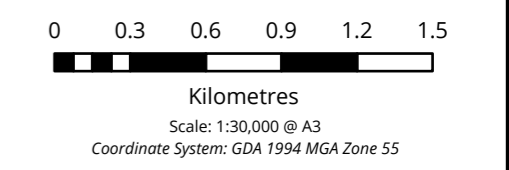
Matter: 29803,  
 Date: 06 June 2019,  
 Checked by: ERN/WH, Drawn by: , Last edited by: dkazemi  
 Location: \\bio-data-01\matters5

Acknowledgements: Vicmap Basemap ©State of Victoria,



- Legend**
- Study area
  - Kilometre Point
  - Construction footprint
  - Precinct Structure Plan Boundary**
  - Complete & Approved
  - Yet to be Completed
  - PSP Land Use**
  - Residential
  - Town Centre
  - Mixed Use
  - Commercial
  - Industrial
  - Education
  - Community Facilities
  - Local Open Space
  - Conservation
  - Heritage
  - Utility Easement/Corridor
  - Drainage
  - Existing Open Space
  - Rail
  - Municipal
  - Non-Arterial Road
  - Arterial Road; Existing Developed Land
  - Other
  - Utility Facility
  - Gas pipeline
  - Power transmission

**Figure 3.6 Study area, and Precinct Structure Plan Land Uses**  
**Western Outer Ring Main - Preliminary alignment**



Matter: 29803,  
 Date: 06 June 2019,  
 Checked by: ERN/WH, Drawn by: , Last edited by: dkazemi  
 Location: \\biosis-data-01\matters\5

Acknowledgements: Vicmap Basemap ©State of Victoria,