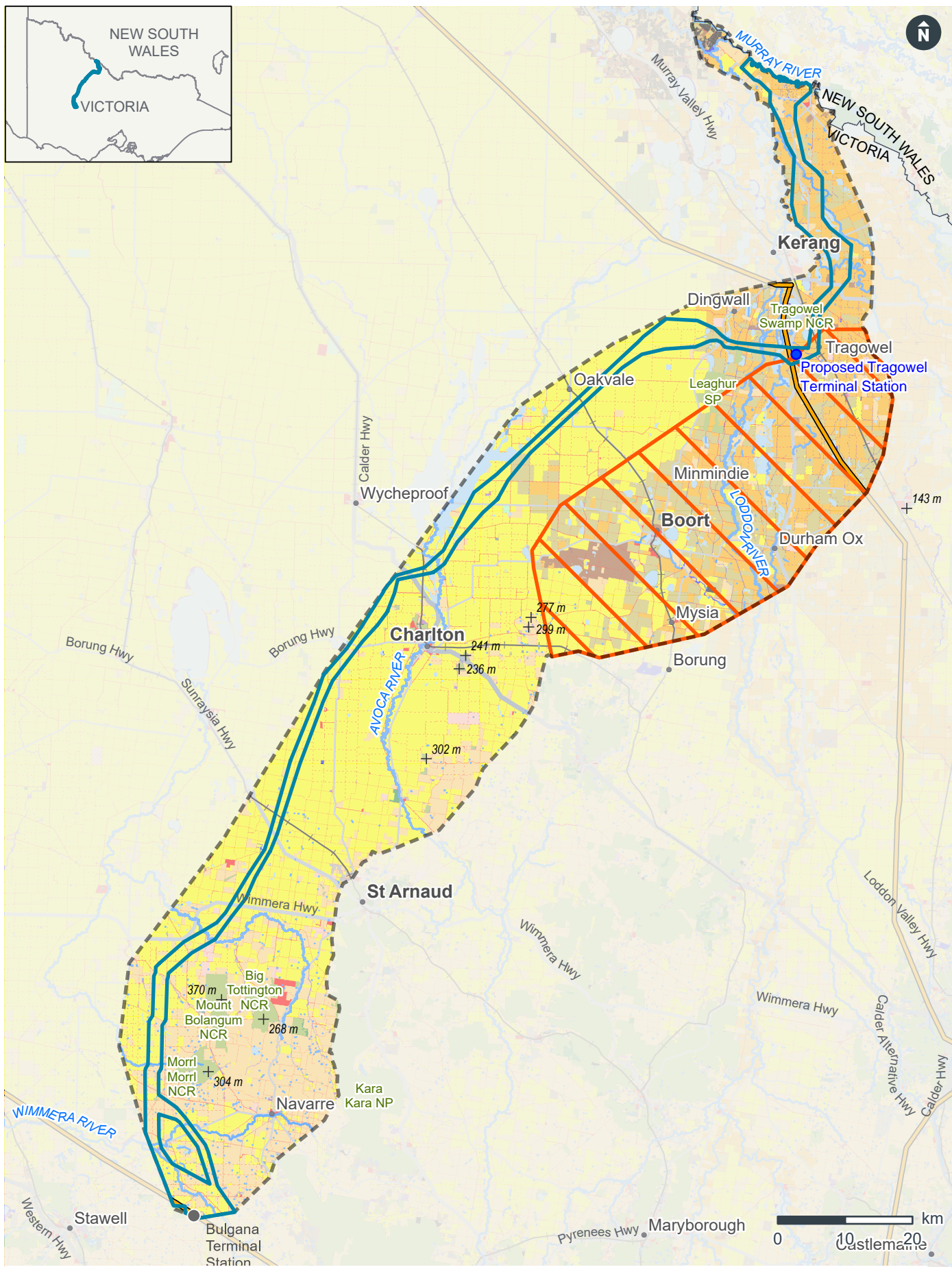


Figure 9 - Current Land Use

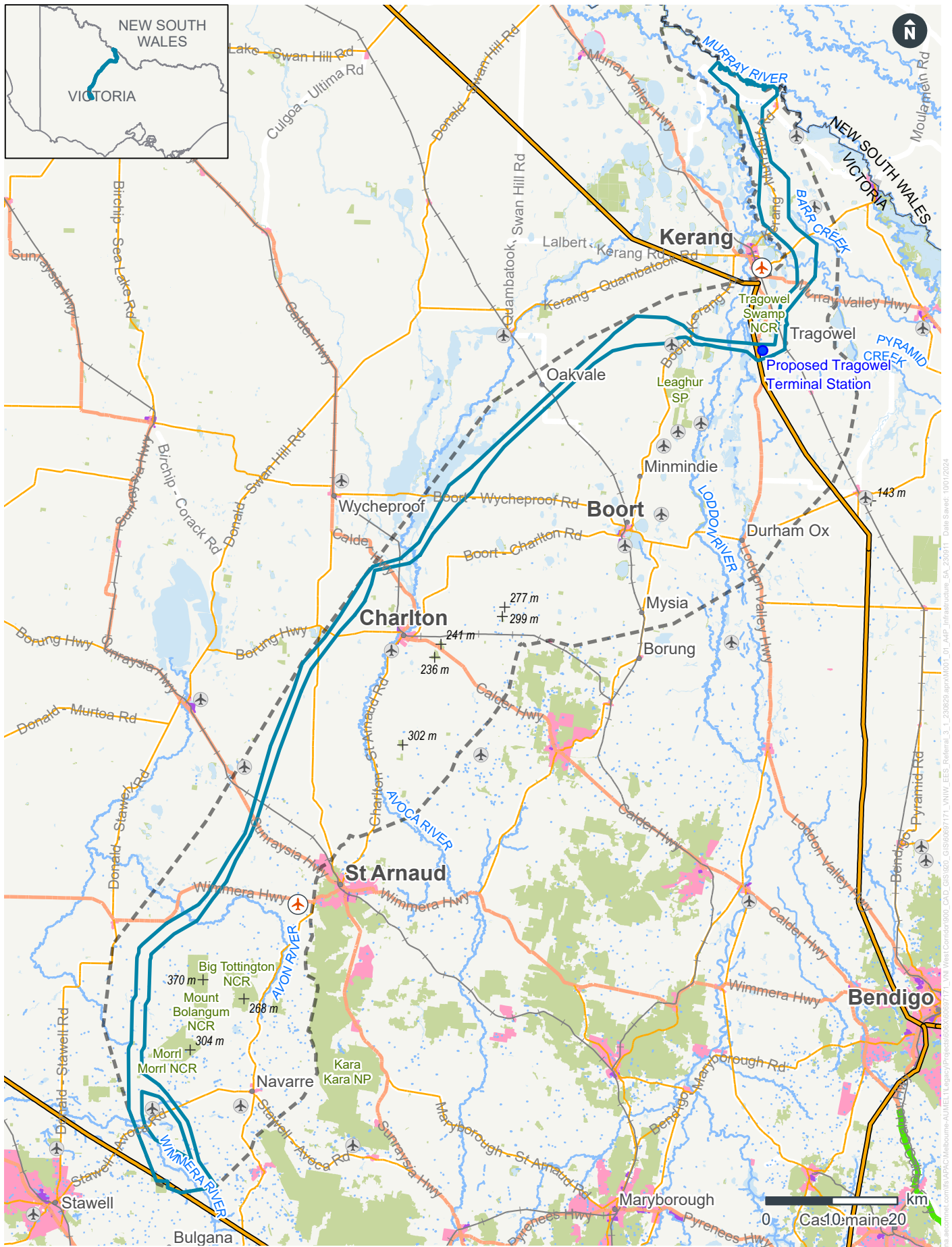


LEGEND

- | | | | |
|------------------------------------|---|------------------------|--|
| Draft Corridor | Managed resource protection | Dryland cropping | Urban intensive uses |
| Bulgana Terminal Station | Other minimal use | Dryland horticulture | Intensive horticulture and animal production |
| 5A Area of Interest | Grazing native vegetation | Land in transition | Rural residential and farm infrastructure |
| Power Transmission | Production native forests | Irrigated pastures | Mining and waste |
| Higher GMW Impact Area | Grazing modified pastures | Irrigated cropping | Water |
| Proposed Tragowel Terminal Station | Plantation forests (commercial and other) | Irrigated horticulture | Nature conservation |

via: aecomnet.com/ra/APAC/Melbourne-AUMEL/1Legacy/Projects/606X/6087171_VNI/West/Comdr/9000_CAC_GIS/920_GIS/07_APRX/0087171_VNI/W_03_Draft_Referral_Fig_231012_aprx/001_01_AAP_LandUse_SA_231013_Data_Saved: 11/01/2024

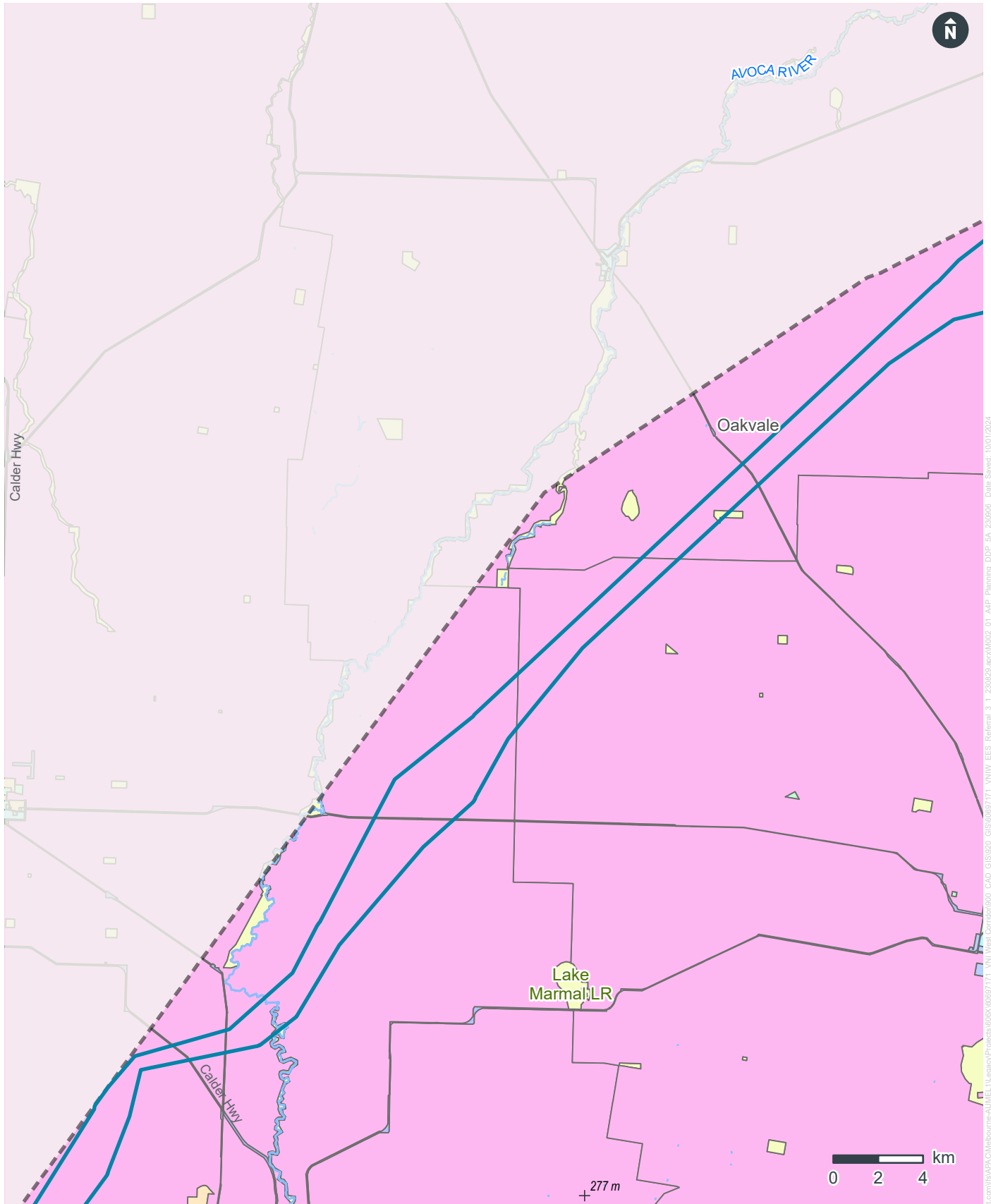
Figure 10 - Land Use Infrastructure



LEGEND

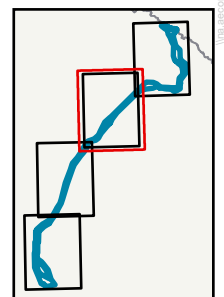
- ▬ Draft Corridor
- 5A Area of Interest
- ▬ Existing Power Transmission
- Railway lines
- Proposed Tragowel Terminal Station
- ⊕ CASA Certified Aerodromes
- ⊕ Aerodromes
- Planning Scheme Zones**
- Residential Zones
- Industrial and Commercial Zones
- VicRoads Declared Roads**
- ▬ Arterial Highway
- ▬ Arterial Other
- ▬ Freeway

Figure 13 - Victorian Planning Scheme Zones - North Central



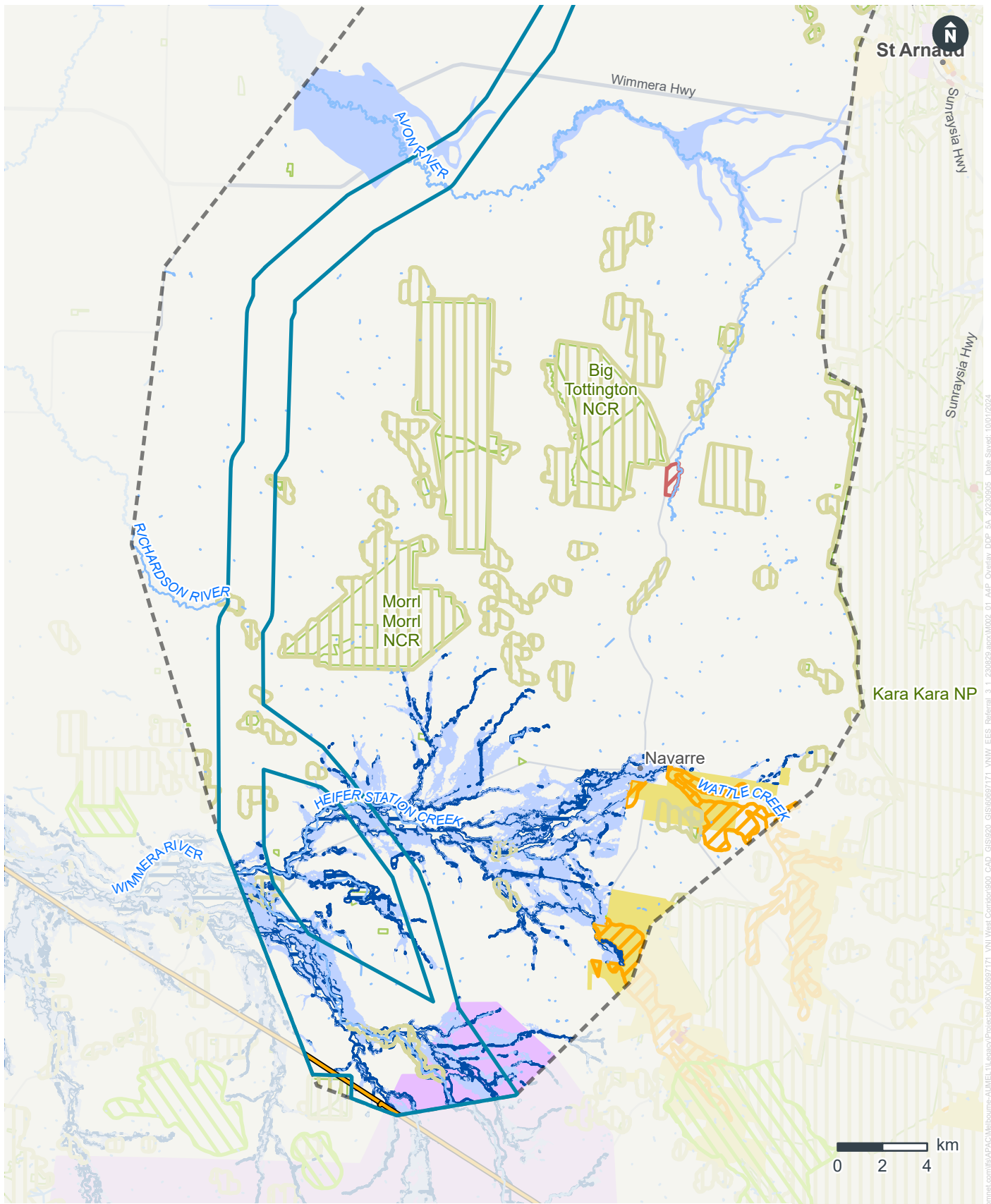
LEGEND

- | | | |
|--------------------------------|--|--|
| Draft Corridor | INZ - Industrial Zone | PPRZ - Public Park and Recreation Zone |
| 5A Area of Interest | PCRZ - Public Conservation and Resource Zone | PUZ - Public Use Zone |
| Victorian Planning Scheme Zone | TZ - Township Zone | TRZ - Transport Zone |
| FZ - Farming Zone | | |



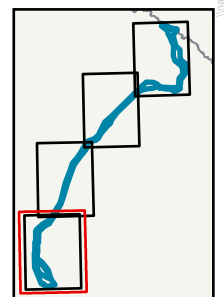
\\ms01\comnet\1160\AECOM\Melbourne-AU\IEE-1\Legacy\Projects\608X\6087171_VN1\Work\Conduct\900_CAD_GIS\920_GIS\6087171_VN1W_EES_Referral_3_1_230823.apr\M002_01_AAP_Planning_DDP_5A_230606 Date Saved: 10/01/2024

Figure 15 - Victorian Planning Scheme Overlays - South



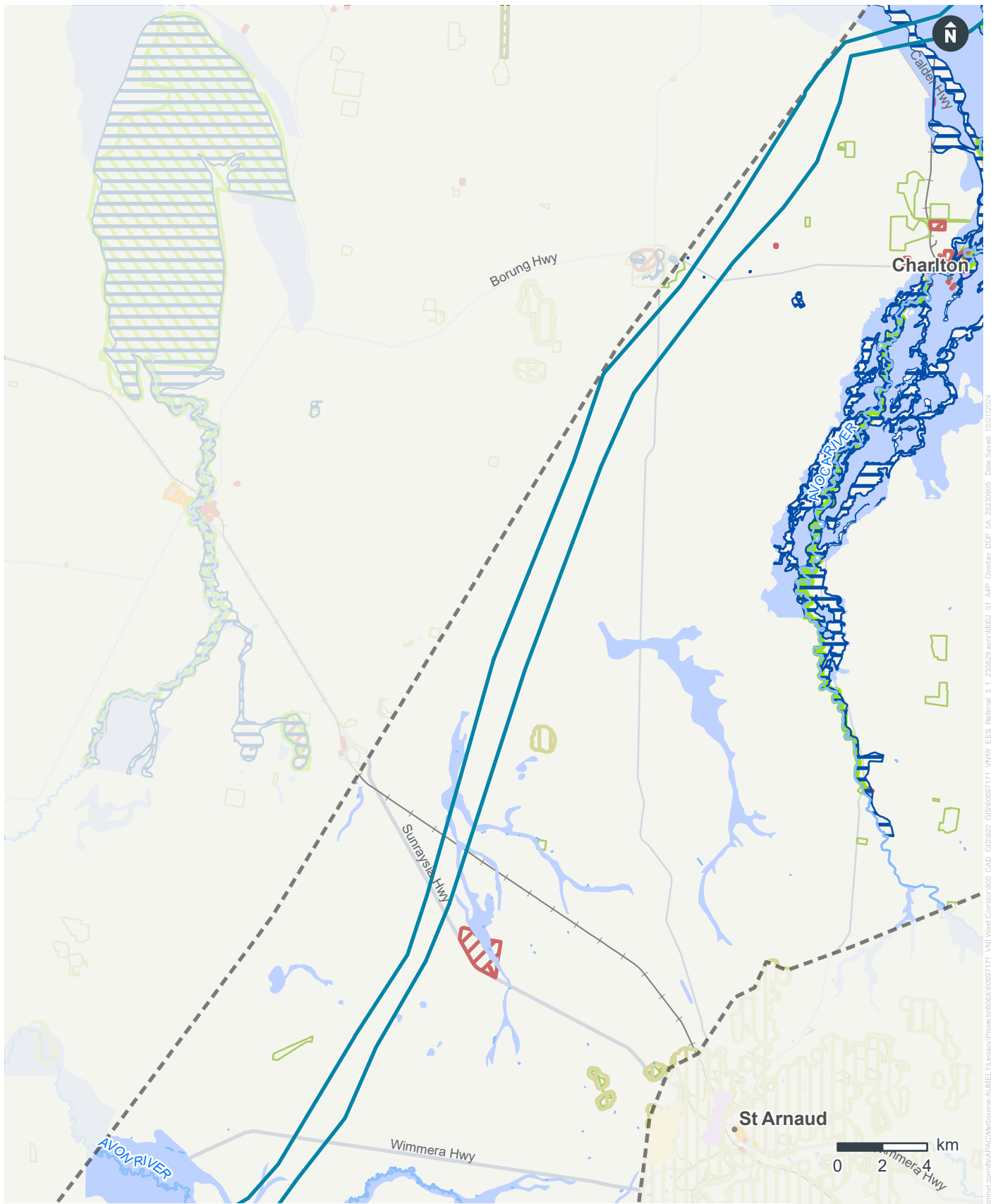
LEGEND

- | | | |
|-----------------------------|------------------------------------|------------------------------------|
| Draft Corridor | Design and Development Overlay | Erosion Management Overlay |
| 5A Area of Interest | Environmental Significance Overlay | Land Subject to Inundation Overlay |
| Power Transmission | Floodway Overlay | Restrictive Overlay |
| Planning Overlays ESO | Heritage Overlay | Specific Controls Overlay |
| Bushfire Management Overlay | Environmental Audit Overlay | |



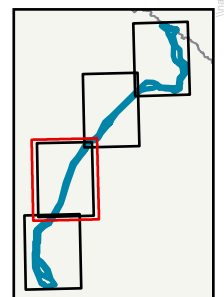
I:\aecomnet.com\66APAC\Melbourne-AUMEL_TL\Legacy\Projects\609X00897171_VNI West Corridor\900_CAD_GIS\920_GIS\60987171_VNI_EES_Referral_3_1_202029.aprx\W002_01_AAP_Overlay_DDP_SA_20230505 Date Saved: 10/11/2024

Figure 16 - Victorian Planning Scheme Overlays - South Central



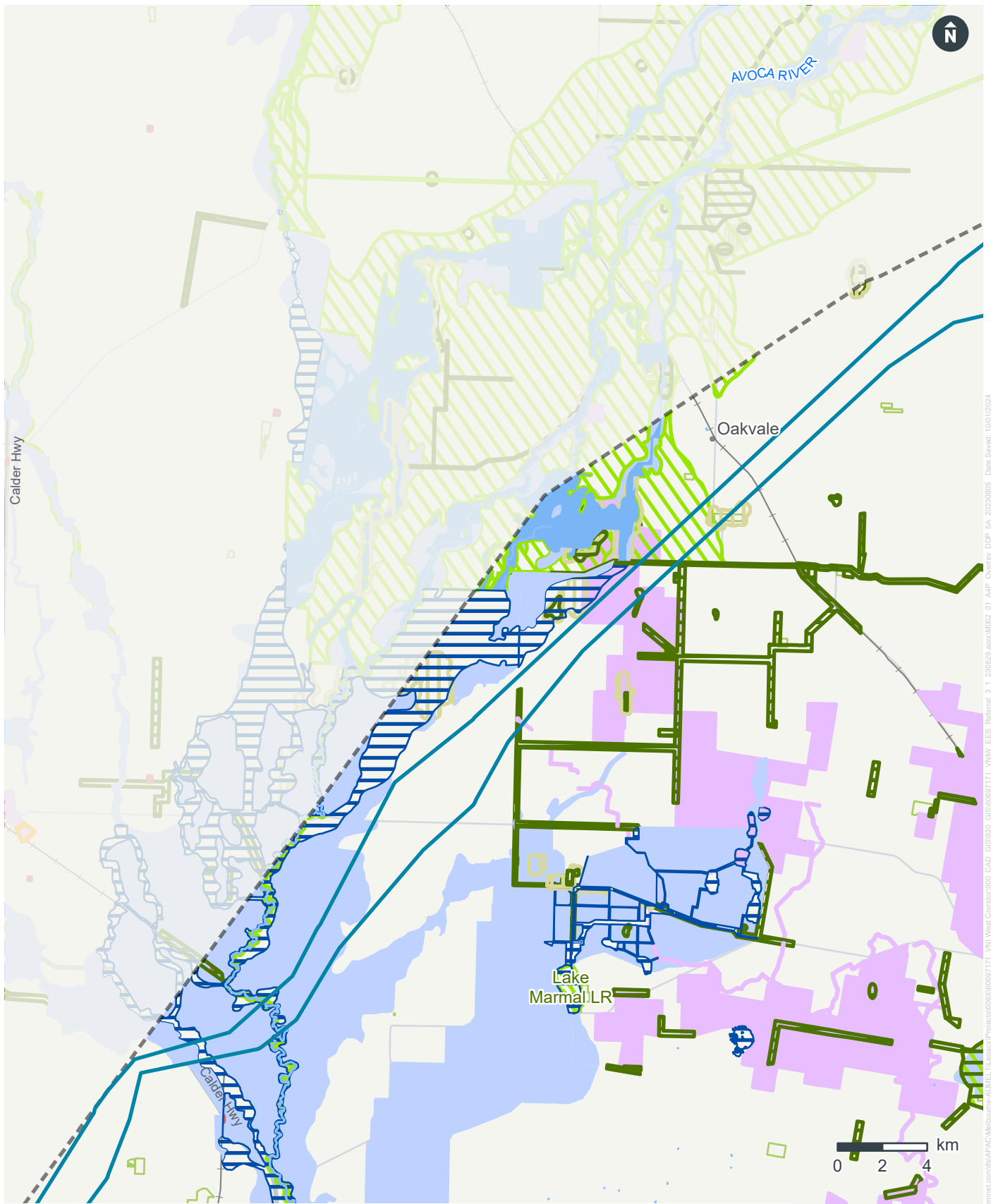
LEGEND

- | | | |
|------------------------------|--|--|
| | | |
| | | |
| Planning Overlays ESO | | |
| | | |
| | | |



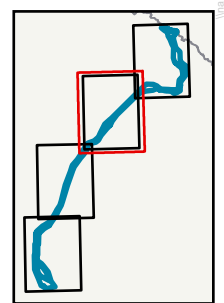
aecomet.com/65APAC/Melbourne-AUMEL/ILegacy/Projects/606X0089771_VN1 West Corridor/000_CAD_GIS/920_GIS/6089771_VN1W_EES_Referral_3_1_230829.aprx/W002_01_AAP_Overlay_DDP_5A_20220505 Date Saved: 10/12/2024

Figure 17 - Victorian Planning Scheme Overlays - North Central



LEGEND

- | | | |
|--------------------------------|------------------------------------|------------------------------------|
| Draft Corridor | Environmental Significance Overlay | Environmental Audit Overlay |
| 5A Area of Interest | Floodway Overlay | Land Subject to Inundation Overlay |
| Planning Overlays ESO | Heritage Overlay | Restrictive Overlay |
| Bushfire Management Overlay | Vegetation Protection Overlay | Rural Floodway Overlay |
| Design and Development Overlay | | Specific Controls Overlay |



I:\aecomnet.com\6APAC\Melbourne\MULE\GIS\Projects\609X0097171_VNI West Corridor\000_CAD_GIS\020_GIS\06087171_VNI West Corridor\002_01_AAP_Overlay_DDP_0A_20202005 Date Saved: 10/11/2024

