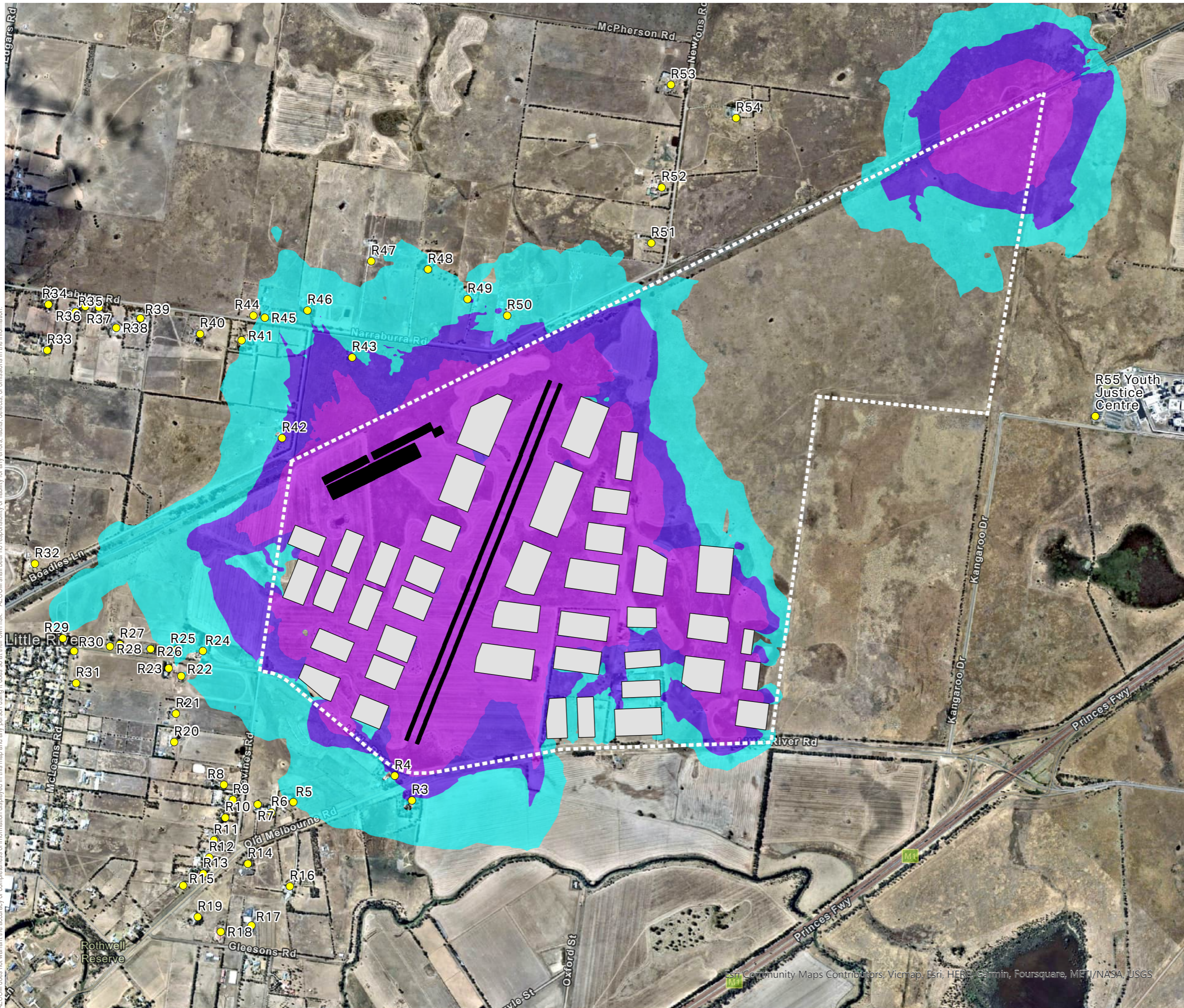
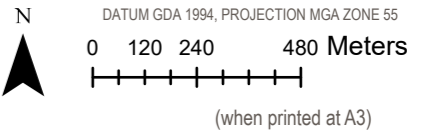


AECOM does not warrant the accuracy or completeness of information displayed in this map and any person using it does so at their own risk. AECOM shall bear no responsibility or liability for any errors, faults, defects, or omissions in the information.



**AECOM**



**Legend**

- Sensitive Receptor
- Buildings
- Shipping Containers (2050)
- Site Boundary

**Noise Levels**

- < 36 dB(A)
- 36 - 40 dB(A)
- 40 - 44 dB(A)
- > 44 dB(A)

**Little River Logistics Precinct**

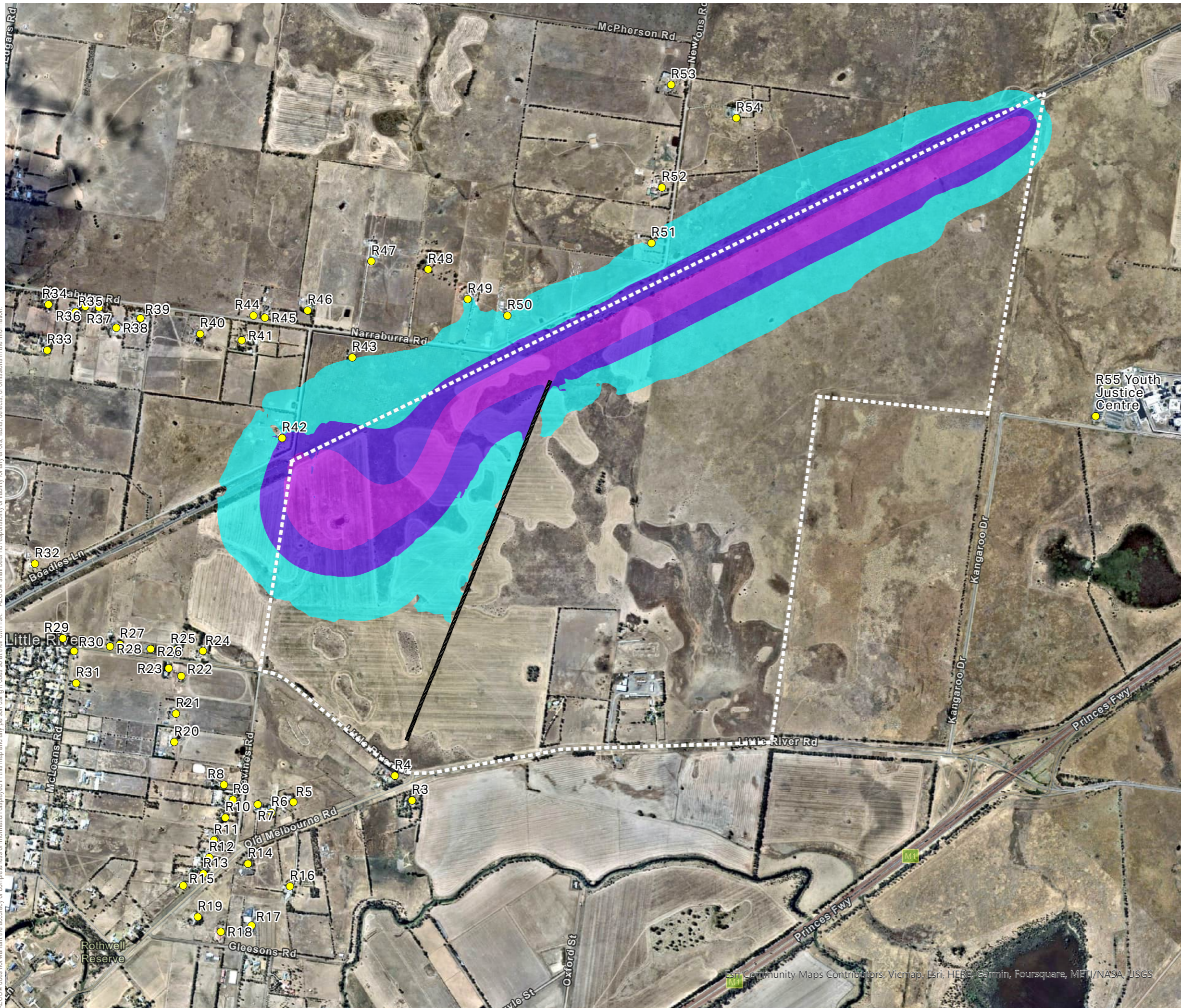
**Noise Contour Map - 2050 Operational**  
**L<sub>eq,30min</sub> Assessment Eve / Night period)**

PROJECT #: 60677282  
 CREATED BY: PD  
 LAST MODIFIED: 30/05/2023  
 VERSION: 3

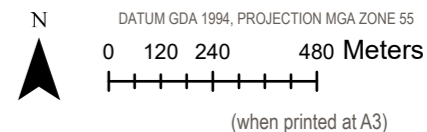
**G-4**

Esri Community Maps Contributors, Vicmap, Esri, HERE, Garmin, Foursquare, MIIT/NASA, USGS

AECOM does not warrant the accuracy or completeness of information displayed in this map and any person using it does so at their own risk. AECOM shall bear no responsibility or liability for any errors, faults, defects, or omissions in the information.



**AECOM**



**Legend**

- Sensitive Receptor
- Shipping Containers (2029)
- Site Boundary

**Noise Levels**

- < 36 dB(A)
- 36 - 40 dB(A)
- 40 - 44 dB(A)
- > 44 dB(A)

**Little River Logistics Precinct**

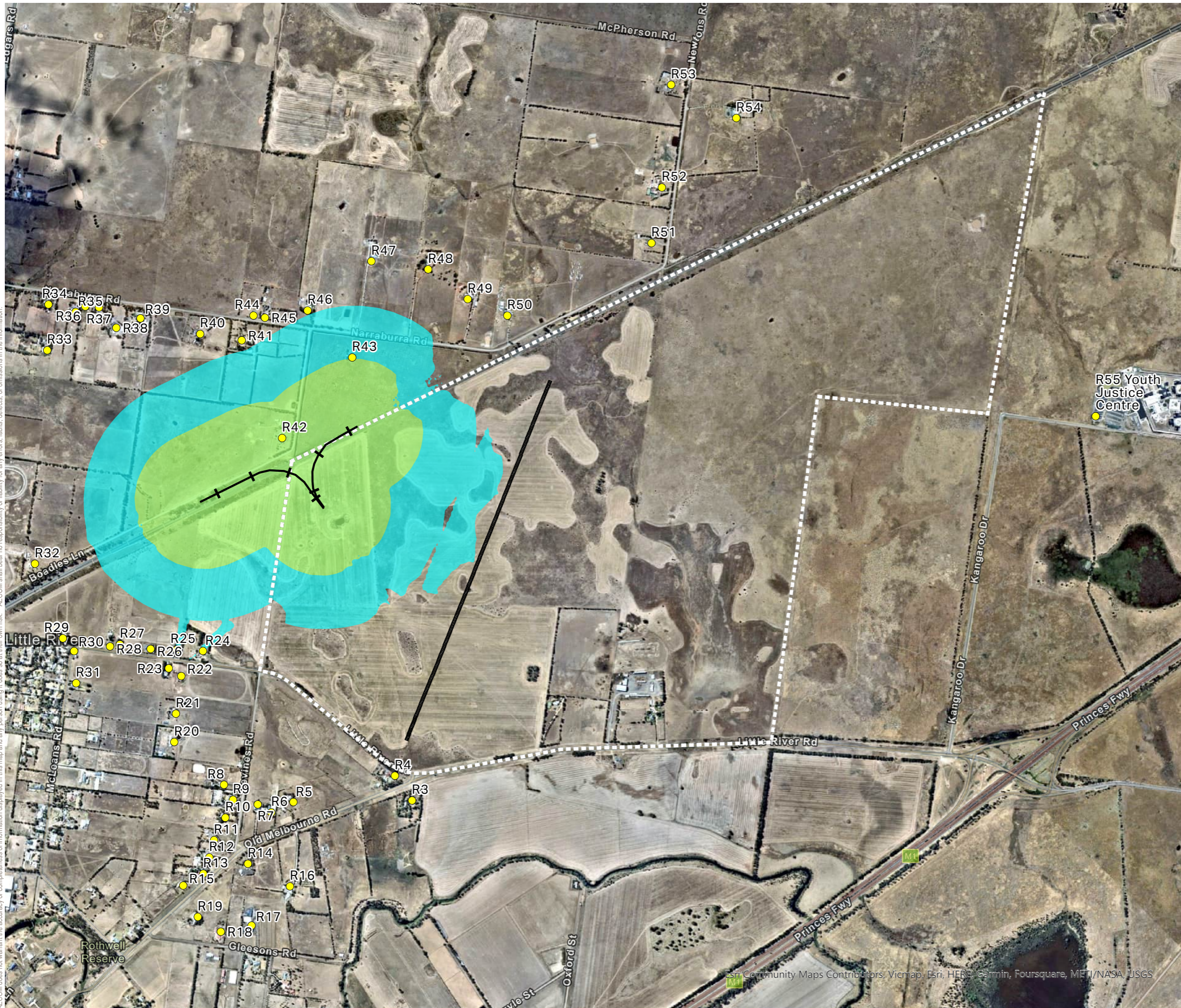
**Noise Contour Map**  
Leq,30min Rail Assessment

PROJECT #: 60677282  
 CREATED BY: PD  
 LAST MODIFIED: 30/05/2023  
 VERSION: 3

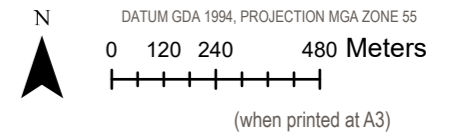
**G-5**

Esri Community Maps Contributors, Vicmap, Esri, HERE, Garmin, Foursquare, MIIT/NASA, USGS

AECOM does not warrant the accuracy or completeness of information displayed in this map and any person using it does so at their own risk. AECOM shall bear no responsibility or liability for any errors, faults, defects, or omissions in the information.



**AECOM**



**Legend**

- Sensitive Receptor
- Rail Flyover
- Shipping Containers (2029)
- Site Boundary

**Noise Levels**

- < 60 dB(A)
- 60 - 65 dB(A)
- > 65 dB(A)

**Little River Logistics Precinct**

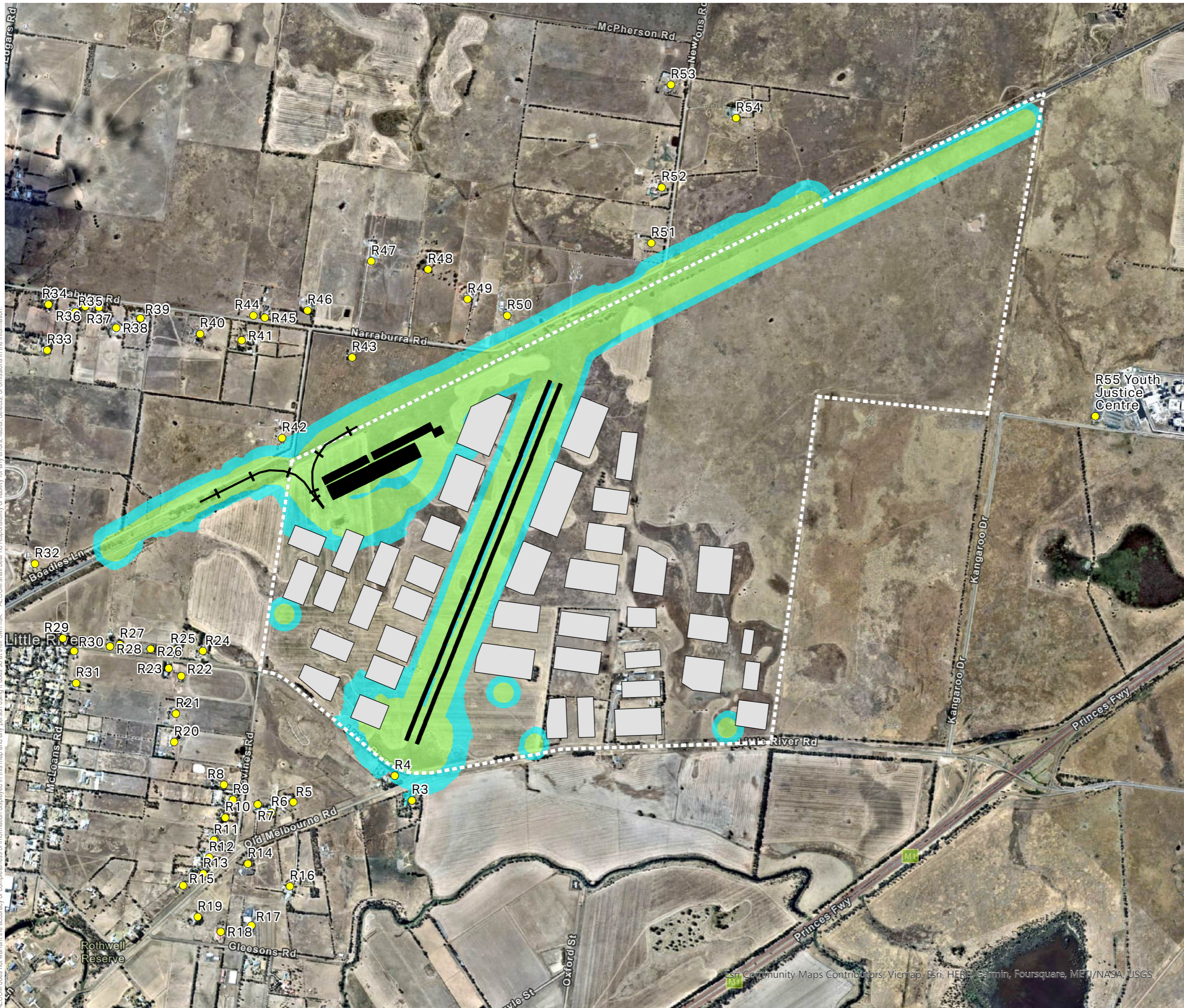
**Noise Contour Map - 2050 Operational  
L<sub>max</sub> Flyover Assessment**

PROJECT #: 60677282  
 CREATED BY: PD  
 LAST MODIFIED: 30/05/2023  
 VERSION: 3

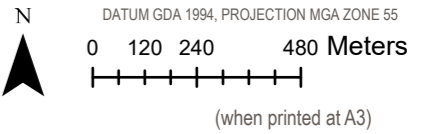
**G-6**

Esri Community Maps Contributors, Vicmap, Esri, HERE, Garmin, Foursquare, MIIT/NASA, USGS

AECOM does not warrant the accuracy or completeness of information displayed in this map and any person using it does so at their own risk. AECOM shall bear no responsibility or liability for any errors, faults, defects, or omissions in the information.



**AECOM**



**Legend**

- Sensitive Receptor
- Buildings
- Rail Flyover
- Shipping Containers (2050)
- Site Boundary

**Noise Levels**

- < 60 dB(A)
- 60 - 65 dB(A)
- > 65 dB(A)

**Little River Logistics Precinct**

**Noise Contour Map - 2050 Operational L<sub>max</sub> Assessment**

PROJECT #: 60677282  
 CREATED BY: PD  
 LAST MODIFIED: 30/05/2023  
 VERSION: 3

**G-7**

Esri Community Maps Contributors, Vicmap, Esri, HERE, Garmin, Foursquare, MIIT/NASA, USGS