

Attachment 1 – Project Overview Maps

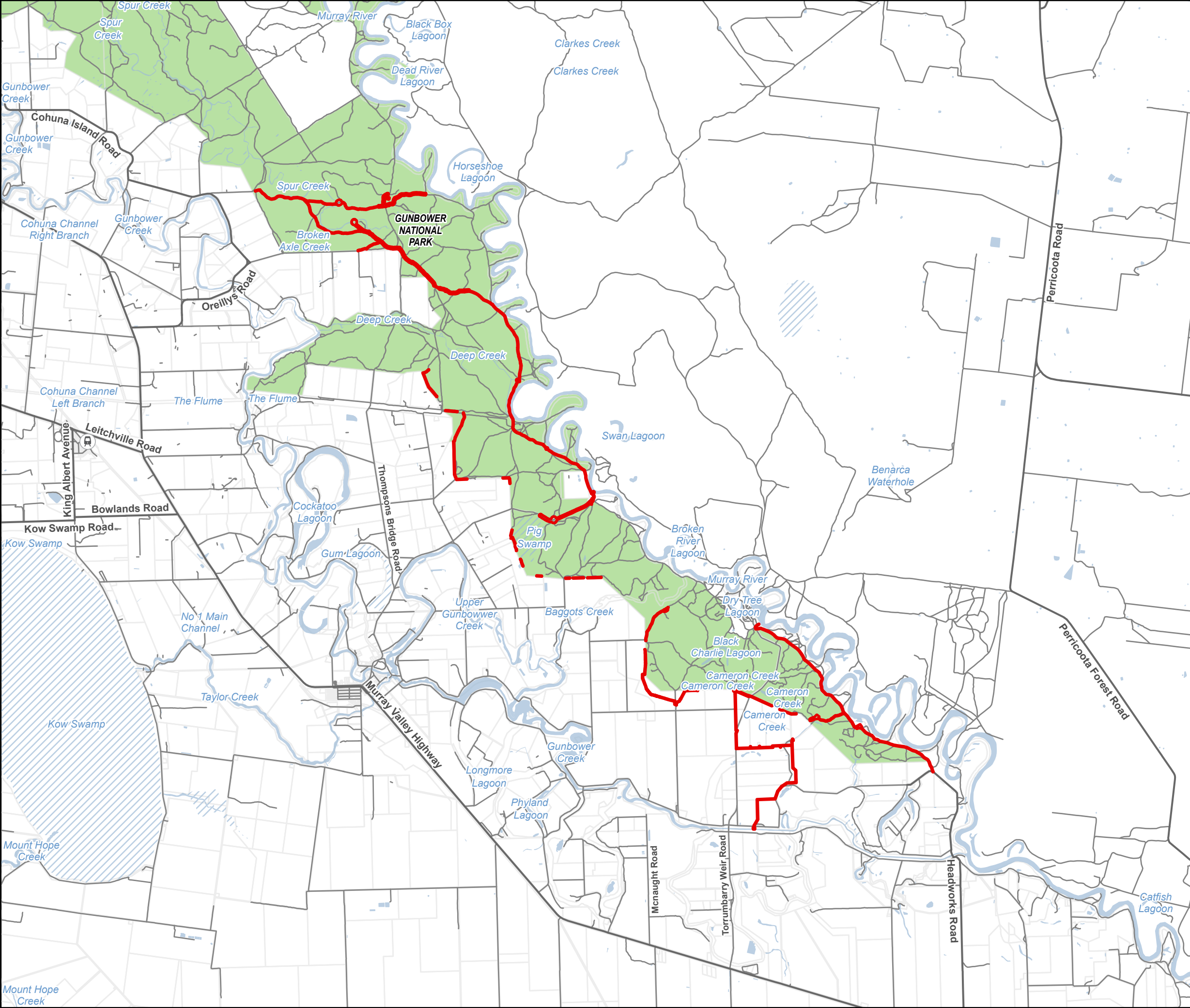
Map 1 - Project location map

Map 2 - Project structures, construction and access


Map 3 - Managed inundation area

Map 4 - Ramsar sites


Map 5 - VMFRP Project Overview



Legend

- Area of Investigation
-  Rail Station
- Major Road
- Minor Road
- Waterbody
- Wetland Swamp
- Cadastre
- NATIONAL PARK

N

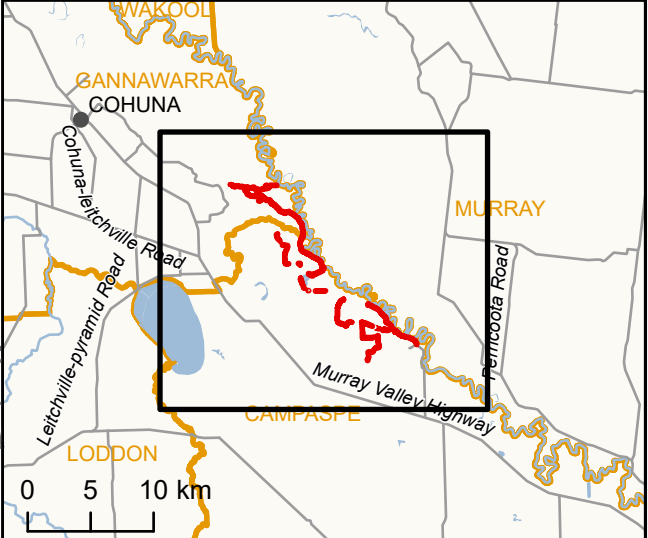


0 2 4
Kilometers


IS297705

DATA SOURCES
© Commonwealth of Australia (Geoscience Australia) 2006 Geodata Topo 250k Series 3; Vicmap Data © State of Victoria 2019; Jacobs 2019.

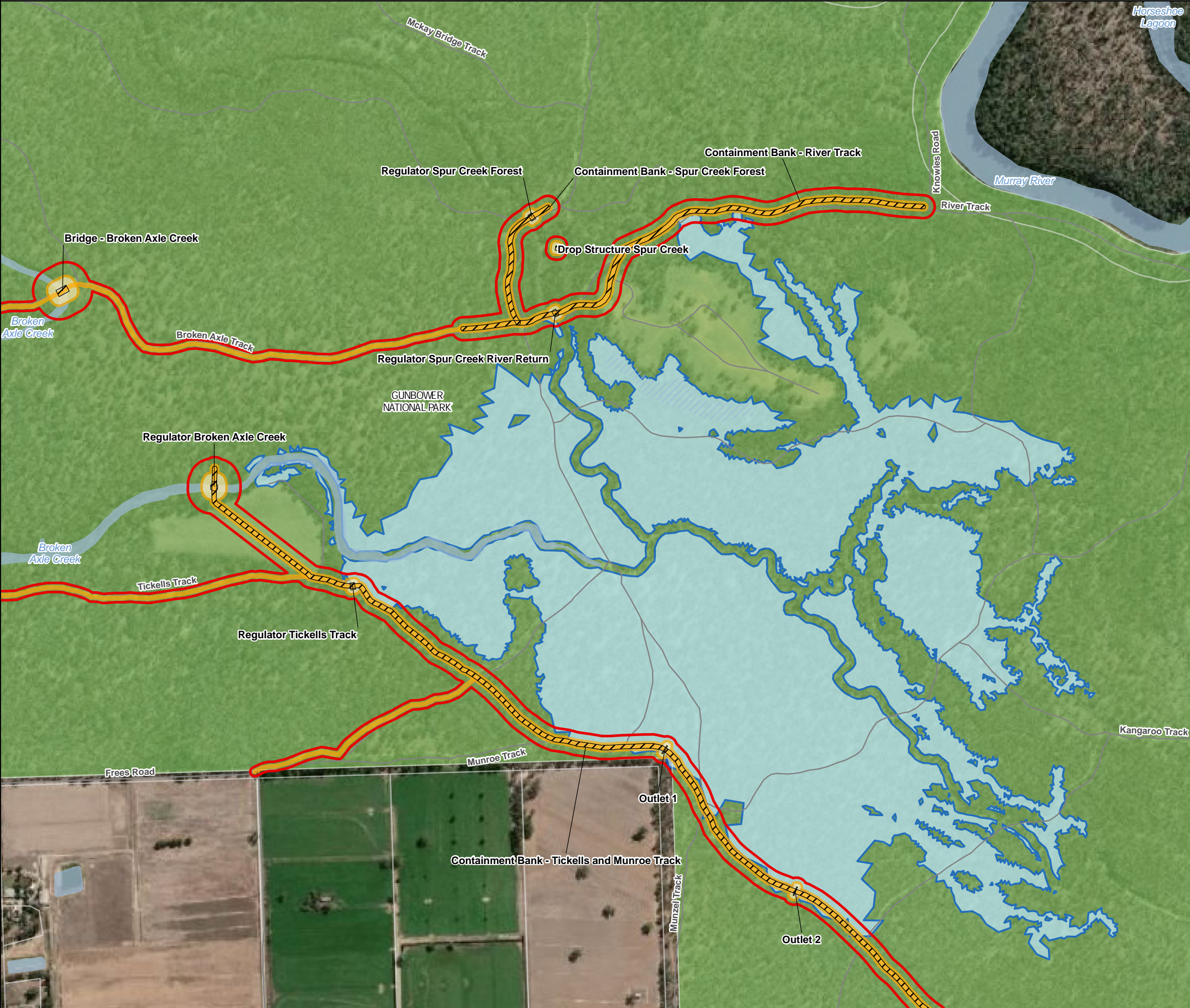
COPYRIGHT: The concepts and information contained in this document are the copyright of Jacobs. Use or copying of the document in whole or in part without the written permission of Jacobs constitutes an infringement of copyright. Jacobs does not warrant that this document is definitive nor free of error and does not accept liability for any loss caused or arising from reliance upon information provided herein.



0 5 10 km







Legend

- Area of Investigation
- Development Footprint
- Construction Footprint
- Inundation Area
- Minor Road
- Waterbody
- Wetland Swamp
- Cadastre
- Public Land Management
- NATIONAL PARK

IS297705

0 200 400

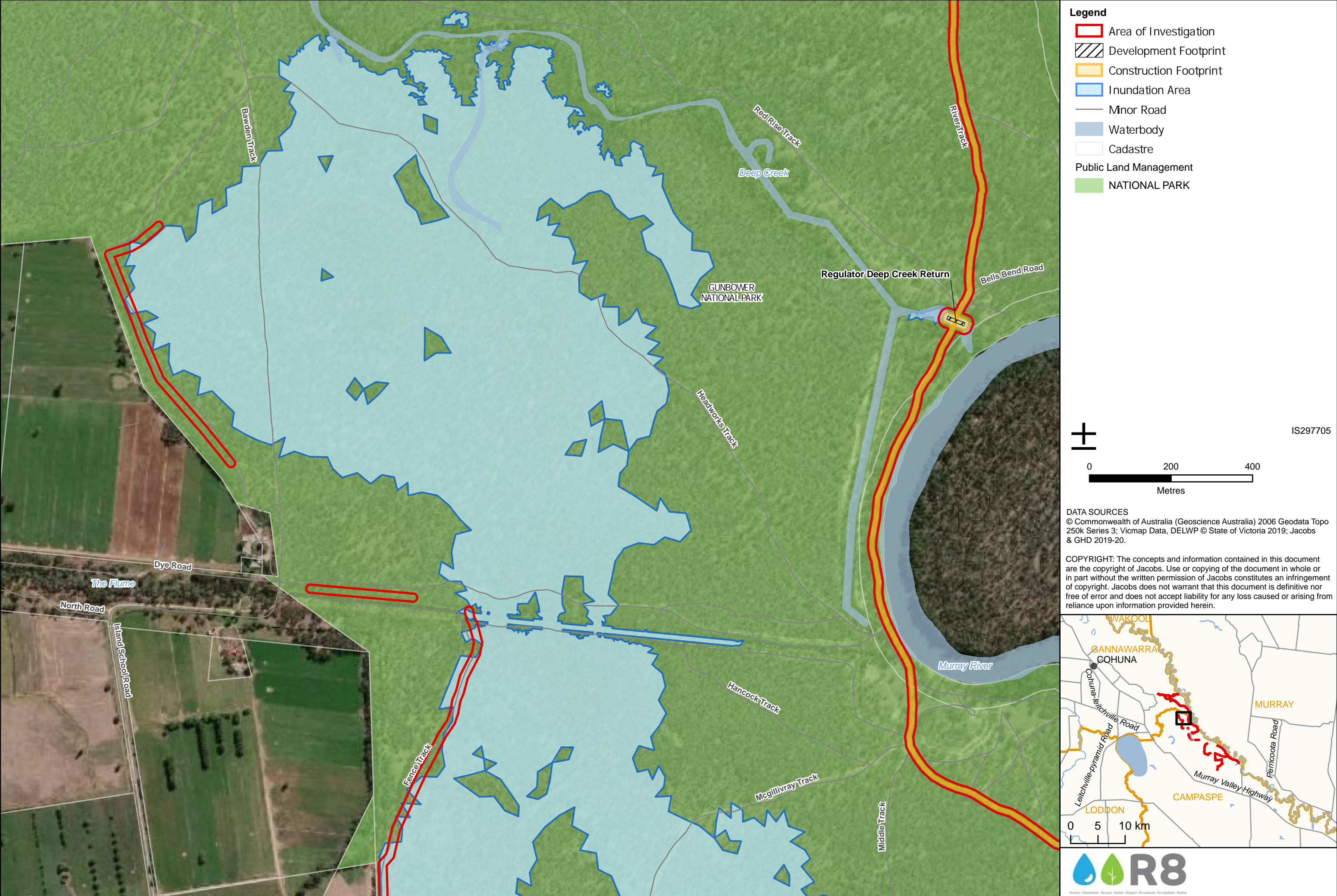
Metres

DATA SOURCES
© Commonwealth of Australia (Geoscience Australia) 2006 Geodata Topo 250k Series 3; Vicmap Data, DELWP © State of Victoria 2019; Jacobs & GHD 2019-20.

COPYRIGHT: The concepts and information contained in this document are the copyright of Jacobs. Use or copying of the document in whole or in part without the written permission of Jacobs constitutes an infringement of copyright. Jacobs does not warrant that this document is definitive nor free of error and does not accept liability for any loss caused or arising from reliance upon information provided herein.









Legend

- Area of Investigation
- Development Footprint
- Construction Footprint
- Inundation Area
- Minor Road
- Waterbody
- Cadastre
- Public Land Management
- NATIONAL PARK

IS297705

0 200 400
Metres

DATA SOURCES
© Commonwealth of Australia (Geoscience Australia) 2006 Geodata Topo 250k Series 3; Vicmap Data, DELWP © State of Victoria 2019; Jacobs & GHD 2019-20.

COPYRIGHT: The concepts and information contained in this document are the copyright of Jacobs. Use or copying of the document in whole or in part without the written permission of Jacobs constitutes an infringement of copyright. Jacobs does not warrant that this document is definitive nor free of error and does not accept liability for any loss caused or arising from reliance upon information provided herein.

