

PLAN OF
GENERAL
DEVELOPMENT

MELBOURNE

REPORT OF THE
METROPOLITAN
TOWN PLANNING
COMMISSION

1929





711.4099
451 MEL:M
(1929)

3849478
Plan of general
development, Melbourne
: report of the
Metropolitan Town
Planning Commission

19 JUL 1988

Plan of General Development

MELBOURNE

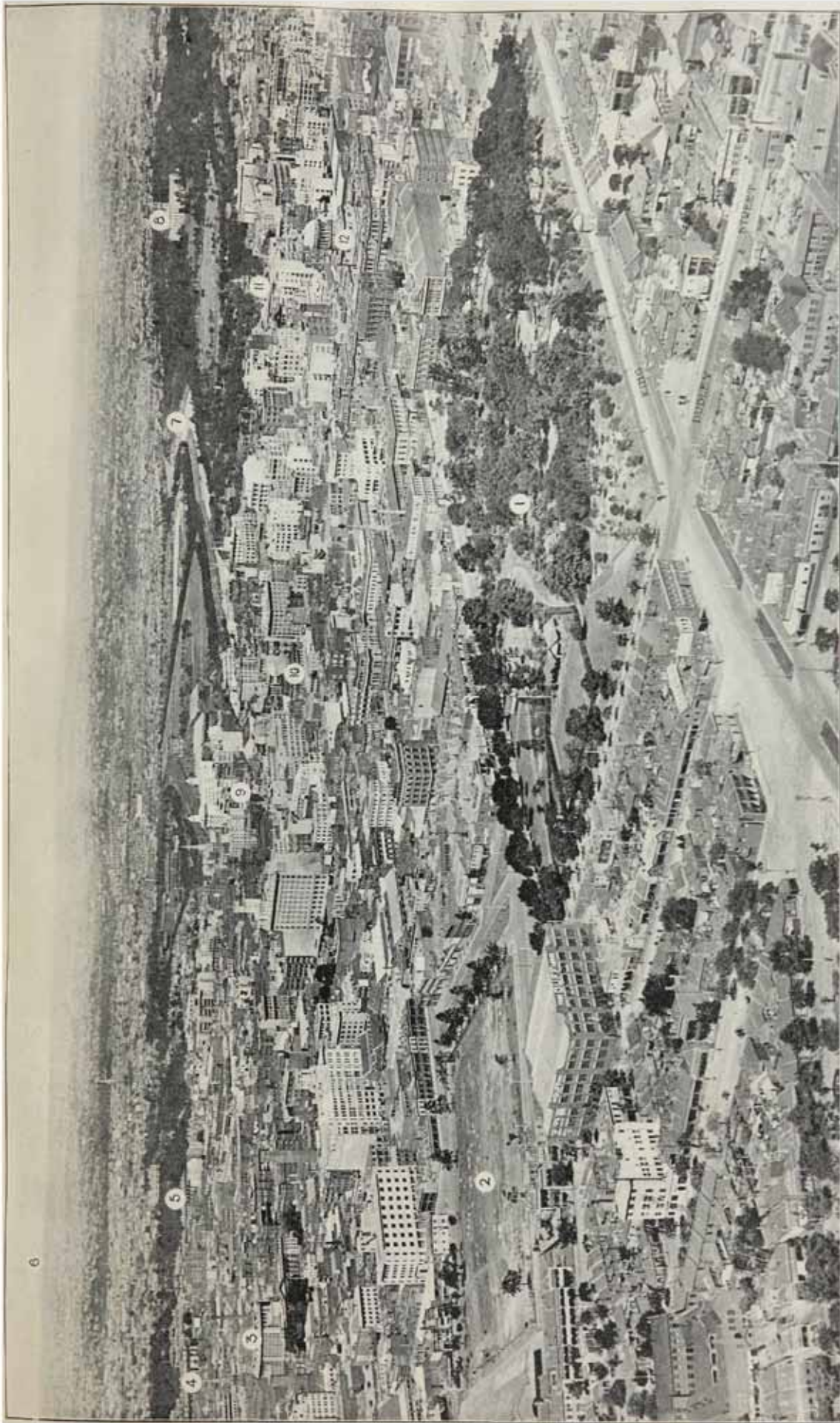


REPORT OF THE
METROPOLITAN TOWN PLANNING
COMMISSION

1929

MINISTRY FOR PLANNING
AND ENVIRONMENT LIBRARY

BY AUTHORITY :
H. J. GREEN, GOVERNMENT PRINTER, MELBOURNE



MELBOURNE—LOOKING EAST FROM WEST MELBOURNE, ACROSS THE CENTRAL BUSINESS DISTRICT.

- | | | | |
|-------------------------------|---|--|--------------------------------------|
| 1. Flagstaff Gardens. | 5. The Treasury. | 8. Federal Government House, surrounded by Botanic and Queen Victoria Gardens. | 10. Old General Post Office. |
| 2. Site of First Cemetery. | 6. The Dandenong Ranges. | 9. Town Hall. | 11. Flinders-street Railway Station. |
| 3. Public Library and Museum. | 7. River Yarra, Batman and Alexandra Avenues. | | 12. Law Courts. |

[Photo. by "Airsyde," Sharp Aviation Company.]

INDEX TO CONTENTS

	Page No.
THE TOWN PLANNING MOVEMENT IN MELBOURNE	1
PERSONNEL OF THE COMMISSION	5
APPOINTMENT AND DUTIES OF THE COMMISSION	7
REFERENCE TO EARLIER REPORTS	8
FOREWORD	13
LETTER TO THE HON. THE MINISTER	15
INTRODUCTION	19

PART I

SURVEYS AND STUDIES

THE AREA OF PLANNING	23
GROWTH OF THE METROPOLIS—	
Population Studies	24
GENERAL SURVEY OF METROPOLIS—	
Topography and Climate	26
THE VEHICULAR TRAFFIC SURVEY—	
The Suburban Traffic Census	27
The City Traffic Census	34
GENERAL TRAFFIC SURVEY—	
Vehicular, Tramway, and Railway Statistics	43
STREET ACCIDENTS	45

PART II

COMMUNICATIONS

ROADS	51
Early development, p. 51. Tramway routes, p. 52. Parking of vehicles, p. 54. Underground services, p. 57. Setting back of building lines, p. 58. Widening by acquisition of additional land, and the layout of roadways, p. 60	
ARTERIAL ROADS—IMPROVEMENT RECOMMENDATIONS—	
ROUTE No. 1—Port Melbourne—Melbourne Highway	62
The Water Gateway	64
City section as traffic relief scheme	64
ROUTE No. 2—South-Western Highway (Geelong—Melbourne)	64
ROUTE No. 3—Point Cook—Melbourne	65
ROUTE No. 4—Sunshine to Melbourne	67
New Melbourne—Footscray Road	68
ROUTE No. 5—Ballarat-road—Dynon-road	68
ROUTE No. 6—North-Western (Calder) Highway—Keilor to Melbourne	70
ROUTE No. 7—Lancefield Highway—new 198-ft. road connecting Mount Alexander and Flemington roads	71
Improvements at Moonee Ponds Junction	72
ROUTE No. 8—Hume (North-Eastern) Highway	72
Road through Royal Park and West Brunswick	73
ROUTE No. 9—To Locality of Broadmeadows Military Camp	74
ROUTE No. 10—Sydney road	75
ROUTE No. 11—St. George's-road—Epping-road	75
Plantations in St. George's-road	76
ROUTE No. 12—Fairfield and East Preston Highway	77
ROUTE No. 13—Ivanhoe—Bundoora—Whittlesea Highway : Waterdale-road and Extensions	77
ROUTE No. 14—Melbourne, Heidelberg, and Greensborough Highway	78
ROUTE No. 15—East Kew to Templestowe Highway	79

ARTERIAL ROADS—IMPROVEMENT RECOMMENDATIONS— <i>continued</i> .		
ROUTE No. 16—Fairfield to Doncaster Highway ; Outer Circle Railway Bridge	79	
ROUTE No. 17—Melbourne—Canterbury—Moutrose Highway	80	
Development of Eastern Suburbs	80	
Barker's-road to Rathmines-road	81	
Victoria-street scheme	82	
ROUTE No. 18—Melbourne—Ashburton and Ferntree Gully Highway	82	
Yarra Boulevard and Gardiner's Creek schemes	83	
ROUTE No. 19—Prince's Highway (Dandenong-road and Road through Prahran Valley)	84	
Chapel-street, Prahran	84	
Alexandra-avenue—Increased use of	84	
ROUTE No. 20—Morningside Peninsula Highway	86	
Widening of High-street, St. Kilda and Point Nepean roads	86	
ROUTE No. 21—Gardenvale to Heatherton and Keysborough Highway	88	
ROUTE No. 22—Eastern Foreshore Highway	88	
Relief of St. Kilda-street	88	
Continuous Foreshore Drive	89	
GENERAL MAIN ROADS SCHEME : RECOMMENDATIONS—		
Relative functions of various roads	91	
Economic factors in road scheme	91	
Tramline streets	91	
Outer suburban connexions	91	
Relationship to railway level crossings	92	
MAIN ROADS IN MUNICIPALITIES OF—		
Williamstown, Werribee (part), Footscray, and Braybrook (part)	93	
Keilor (part), Broadmeadows (part), Essendon, and Melbourne (part)	94	
Broadmeadows (part), Coburg, Brunswick, Melbourne (part), Fitzroy, Collingwood, and Richmond	96	
Preston, Coburg (part), Northcote, Heidelberg (part)	100	
Heidelberg, (part), Doncaster and Templestowe (part)	101	
Kew, Hawthorn, Camberwell (part), Box Hill, Blackburn and Mitcham, Mulgrave (part)	103	
Melbourne (part), Prahran, Malvern, Camberwell (part), St. Kilda (part), Brighton, Caulfield, Oakleigh (part), and Mulgrave (part)	106	
Brighton (part), Moorabbin, Dandenong (part), Sandringham, and Mordialloc	110	
Port Melbourne, South Melbourne, and St. Kilda (part)	113	
PARKWAYS—		
Their relationship to the Main Roads Scheme	115	
IMPORTANT FACTORS OF ROADS IMPROVEMENT SCHEME—		
Its possibilities ; future savings ; present accomplishments ; estimates of costs not supplied for other than urgent works	118	
TRAFFIC CONTROL AND REGULATION		118
Uniformity ; the right of way at intersections, p. 119. Prohibition of turning traffic ; dangerous curves, subways, &c. ; slow and heavy traffic ; one-way roads, p. 120. Safety zones, p. 121. Automatic traffic signals, p. 122. Speed ; passing stationary tramcars ; loading and unloading of vehicles, p. 123. Advertising vehicles and distractions ; bells, horns, &c. ; drivers' licences, p. 124. Pedestrian congestion in precincts of Flinders-street station ; road crossing by pedestrians ; wear of road surfaces, p. 125.		
ROAD AND INTERSECTION IMPROVEMENTS		126
Obstruction on footways, p. 126. Grades ; rounding of corners ; gyratory movement at junctions, p. 127.		
RAILWAYS		129
Flinders-street—Prince's Bridge Station	130	
Northern City Railway	130	
Darling to Glen Waverley Railway	131	
Proposed Kew to Doncaster Railway	132	
Port Melbourne and St. Kilda Lines	134	
Fisherman's Bend Railway Connexions	135	
Connexions with Live Stock Sale Yards, &c.	136	
RAILWAY LEVEL CROSSINGS		136
Financing abolitions, p. 136. Allocation of costs, p. 136. Present policy ; order of abolition, p. 137. Amended legislation required, p. 137.		
Heidelberg-road Level Crossing	137	
TRAMWAYS		139
Community services rendered ; the tramcar as an economical unit, p. 139. Tramways general scheme, p. 140.		
PORT AND HARBOUR FACILITIES		141
ONE TRANSPORT AUTHORITY		143

PART III

THE EXECUTION OF IMPROVEMENT SCHEMES—A PROGRAMME
OF URGENT WORKS

	Page No.
NECESSITY FOR ADOPTION OF A PLAN OF DEVELOPMENT	147
CLASSIFICATIONS OF URGENT WORKS	147
ESTIMATED COSTS—URGENT WORKS—CLASS "C"	149
FINANCING METROPOLITAN WORKS	150
Metropolitan contributions to State activities, p. 150. Metropolitan contributions; contributions by public authorities; betterment rating, p. 151	
A CENTRAL METROPOLITAN CONSTRUCTING AUTHORITY	152

PART IV

ZONING

DEFINITIONS AND GENERAL	155
An Analysis of Existing Conditions	156
Residential districts and by-laws, p. 156. Shopping and business areas, p. 158. Speculative land subdivision, p. 159. Mixed or decadent areas; noxious and offensive trades, p. 160. Industrial districts, p. 161. Unimproved areas, p. 163.	
BUILDING REGULATIONS—	
Structural regulations; regulations governing size and location of buildings; public buildings ..	163
Height of Buildings	164
Comparisons with other cities	166
THE ZONING SCHEME	168
Residential Districts "A", "B", and "C"	168
Business Districts "A" and "B"	173
Industrial Districts "A", "B", and "C"	177
Non-conforming Uses	182
Alterations or Changes of Use	183
CONCLUSION	184

PART V

PUBLIC RECREATION

INTRODUCTORY REMARKS	187
Ratio of open spaces to population; amount of open spaces required; children's playgrounds, p. 189. Playing fields; other recreation areas, p. 192. The ratio adopted; existing conditions compared, p. 193. The foreshore—beach bathing and recreation facilities, p. 196. Erosion and reclamation of foreshores; foreshore control, p. 197. Alienation of foreshores. Country parks, p. 198.	
THE PROPOSALS OF THE COMMISSION	199
Zoning and the park system	199
Conditions in each municipality examined	200
Statistical Statement	210
THE PARK SYSTEM	214
River Yarra Parks and Boulevard Improvement Scheme, p. 214. Yarra Lake Scheme, p. 215. Plenty River parkway, p. 217. Maribyrnong Valley parkway, p. 217. Rose Creek or Spring Gully parks, p. 218. Gardiner's Valley parkway, p. 219. Scotchman's Creek parks; Back Creek parkway to Wattle Park, p. 220. The Koonung Koonung Creek parks; Bushy Creek parks; Darebin Creek parks and parkways, p. 221. The Merri Creek parks and parkways, p. 222. Edgar's Creek parks; Moonee Ponds Creek parks; Kororoit Creek park; Stony Creek park, p. 224. Eastern Foreshore roads and parks; Western Foreshore drive and parks, p. 225.	
GENERAL OUTLINE OF THE PARK SYSTEM	225
Local parks and children's playgrounds; park roads and drives, p. 226. Access through reserves, p. 228.	
ALIENATION OF RESERVES	228
THE ACQUISITION OF PUBLIC OPEN SPACES	229
FINANCING THE ACQUISITION OF METROPOLITAN PARKS	229
Estimated cost of Metropolitan Park Scheme	230
Estimate of future requirements	230
Alternative loan methods and terms, p. 231. Leasing of purchased lands; betterment rating; contributions by sporting bodies; properties secured by "adverse possession"; Municipal Rates Recovery Act lands, p. 232. The acquisition of local parks, p. 233.	
THE ECONOMIC ASPECT	233
CONCLUSION	234

PART II—COMMUNICATIONS—(continued)

Page No.

ARTERIAL ROADS—IMPROVEMENT RECOMMENDATIONS— <i>continued</i> .		
ROUTE No. 16—Fairfield to Doncaster Highway; Outer Circle Railway Bridge	79	
ROUTE No. 17—Melbourne—Canterbury—Montrose Highway	80	
Development of Eastern Suburbs	80	
Barker's-road to Rathmines-road	81	
Victoria-street scheme	82	
ROUTE No. 18—Melbourne—Ashburton and Ferntree Gully Highway	82	
Yarra Boulevard and Gardiner's Creek schemes	83	
ROUTE No. 19—Prince's Highway (Dandenong-road and Road through Prahran Valley)	84	
Chapel-street, Prahran	84	
Alexandra-avenue—Increased use of	84	
ROUTE No. 20—Mornington Peninsula Highway	86	
Widening of High-street, St. Kilda and Point Nepean roads	86	
ROUTE No. 21—Gardenvale to Heatherton and Keysborough Highway	88	
ROUTE No. 22—Eastern Foreshore Highway	88	
Relief of St. Kilda-street	89	
Continuous Foreshore Drive	89	
GENERAL MAIN ROADS SCHEME: RECOMMENDATIONS—		
Relative functions of various roads	91	
Economic factors in road scheme	91	
Tramline streets	91	
Outer suburban connexions	91	
Relationship to railway level crossings	92	
MAIN ROADS IN MUNICIPALITIES OF—		
Williamstown, Werribee (part), Footscray, and Braybrook (part)	93	
Keilor (part), Broadmeadows (part), Essendon, and Melbourne (part)	94	
Broadmeadows (part), Coburg, Brunswick, Melbourne (part), Fitzroy, Collingwood, and Richmond	96	
Preston, Coburg (part), Northcote, Heidelberg (part)	100	
Heidelberg (part), Doncaster and Templestowe (part)	101	
Kew, Hawthorn, Camberwell (part), Box Hill, Blackburn and Mitcham, Mulgrave (part)	103	
Melbourne (part), Prahran, Malvern, Camberwell (part), St. Kilda (part), Brighton, Caulfield, Oakleigh (part), and Mulgrave (part)	106	
Brighton (part), Moorabbin, Dandenong (part), Sandringham, and Mordialloc	110	
Port Melbourne, South Melbourne, and St. Kilda (part)	113	
PARKWAYS—		
Their relationship to the Main Roads Scheme	115	
IMPORTANT FACTORS OF ROADS IMPROVEMENT SCHEME—		
Its possibilities; future savings; present accomplishments; estimates of costs not supplied for other than urgent works	118	
TRAFFIC CONTROL AND REGULATION		118
Uniformity; the right of way at intersections, p. 119. Prohibition of turning traffic; dangerous curves, subways, &c.; slow and heavy traffic; one-way roads, p. 120. Safety zones, p. 121. Automatic traffic signals, p. 122. Speed; passing stationary trams; loading and unloading of vehicles, p. 123. Advertising vehicles and distractions; bells, horns, &c.; drivers' licences, p. 124. Pedestrian congestion in precincts of Flinders-street station; road crossing by pedestrians; wear of road surfaces, p. 125.		
ROAD AND INTERSECTION IMPROVEMENTS		126
Obstruction on footways, p. 126. Grades; rounding of corners; gyratory movement at junctions, p. 127.		
RAILWAYS		129
Flinders-street—Prince's Bridge Station	129	
Northern City Railway	130	
Darling to Glen Waverley Railway	130	
Proposed Kew to Doncaster Railway	131	
Port Melbourne and St. Kilda Lines	132	
Fisherman's Bend Railway Connexions	134	
Connexions with Live Stock Sale Yards, &c.	135	
RAILWAY LEVEL CROSSINGS		136
Financing abolitions, p. 136. Allocation of costs, p. 136. Present policy; order of abolition, p. 137. Amended legislation required, p. 137.		
Heidelberg-road Level Crossing		137
TRAMWAYS		139
Community services rendered; the tramcar as an economical unit, p. 139. Tramways general scheme, p. 140.		
PORT AND HARBOUR FACILITIES		141
ONE TRANSPORT AUTHORITY		143

PART III

THE EXECUTION OF IMPROVEMENT SCHEMES—A PROGRAMME
OF URGENT WORKS

	Page No.
NECESSITY FOR ADOPTION OF A PLAN OF DEVELOPMENT	147
CLASSIFICATIONS OF URGENT WORKS	147
ESTIMATED COSTS—URGENT WORKS—CLASS "C"	149
FINANCING METROPOLITAN WORKS	150
Metropolitan contributions to State activities, p. 150. Metropolitan contributions; contributions by public authorities; betterment rating, p. 151	
A CENTRAL METROPOLITAN CONSTRUCTING AUTHORITY	152

PART IV

ZONING

DEFINITIONS AND GENERAL	155
An Analysis of Existing Conditions	156
Residential districts and by-laws, p. 156. Shopping and business areas, p. 158. Speculative land subdivision, p. 159. Mixed or decadent areas; noxious and offensive trades, p. 160. Industrial districts, p. 161. Unimproved areas, p. 163.	
BUILDING REGULATIONS—	
Structural regulations; regulations governing size and location of buildings; public buildings ..	163
Height of Buildings	164
Comparisons with other cities	166
THE ZONING SCHEME	168
Residential Districts "A", "B", and "C"	168
Business Districts "A" and "B"	173
Industrial Districts "A", "B", and "C"	177
Non-conforming Uses	182
Alterations or Changes of Use	183
CONCLUSION	184

PART V

PUBLIC RECREATION

INTRODUCTORY REMARKS	187
Ratio of open spaces to population; amount of open spaces required; children's playgrounds, p. 189. Playing fields; other recreation areas, p. 192. The ratio adopted; existing conditions compared, p. 193. The foreshore—beach bathing and recreation facilities, p. 196. Erosion and reclamation of foreshores; foreshore control, p. 197. Alienation of foreshores. Country parks, p. 198.	
THE PROPOSALS OF THE COMMISSION	199
Zoning and the park system	199
Conditions in each municipality examined	200
Statistical Statement	210
THE PARK SYSTEM	214
River Yarra Parks and Boulevard Improvement Scheme, p. 214. Yarra Lake Scheme, p. 215. Plenty River parkway, p. 217. Maribyrnong Valley parkway, p. 217. Rose Creek or Spring Gully parks, p. 218. Gardiner's Valley parkway, p. 219. Scotchman's Creek parks; Back Creek parkway to Wattle Park, p. 220. The Koonung Koonung Creek parks; Bushy Creek parks; Darebin Creek parks and parkways, p. 221. The Merri Creek parks and parkways, p. 222. Edgar's Creek parks; Moonee Ponds Creek parks; Kororoit Creek park; Stony Creek park, p. 224. Eastern Foreshore roads and parks; Western Foreshore drive and parks, p. 225.	
GENERAL OUTLINE OF THE PARK SYSTEM	225
Local parks and children's playgrounds; park roads and drives, p. 226. Access through reserves, p. 228.	
ALIENATION OF RESERVES	228
THE ACQUISITION OF PUBLIC OPEN SPACES	229
FINANCING THE ACQUISITION OF METROPOLITAN PARKS	229
Estimated cost of Metropolitan Park Scheme	230
Estimate of future requirements	230
Alternative loan methods and terms, p. 231. Leasing of purchased lands; betterment rating; contributions by sporting bodies; properties secured by "adverse possession"; Municipal Rates Recovery Act lands, p. 232. The acquisition of local parks, p. 233.	
THE ECONOMIC ASPECT	233
CONCLUSION	234

PART VI

PUBLIC UTILITIES

	Page No.
WATER SUPPLY	237
Reafforestation of catchment areas	238
MAIN DRAINAGE	239
SEWERAGE	239
Bacterial treatment; unsewered areas	240
OTHER PUBLIC SERVICES	240
Gas, Electricity, Lighting, Telephones	241
Relationship to Zoning	241
THE COSTS OF PUBLIC SERVICES	242
Population densities—comparison with other cities	242

PART VII

HOUSING AND LAND SUBDIVISION

HOUSING	247
Relationship of housing and town planning; cause of inferior housing conditions, p. 247. Existing legislation; encouragement of home ownership, p. 248. Prevailing housing conditions, p. 250.	
UNDESIRABLE HOUSING SITES	251
The Maidstone Replanning Scheme	251
Total replanning scheme, p. 251. Alternative method of treatment examined, p. 253. The legislation required; need for early action, p. 254.	
Housing Area and General Development of Fisherman's Bend	254
Williamstown Rifle Range Lands	257
LAND SUBDIVISIONS	258
Present practice; additional supervision &c.	258
Darling to Glen Waverley area; subdivisions in other areas, p. 260. The Brighton town planning scheme, p. 262. Uniformity in regulations, p. 263.	

PART VIII

CIVIC ART AND AMENITIES

THE LOCATION OF PROMINENT BUILDINGS—	
Existing conditions in this metropolis; relationship to town planning schemes	267
IMPROVEMENTS IN EASTERN HILL AREA—SUGGESTED "PARLIAMENT SQUARE"	268
HAYMARKET JUNCTION	270
SQUARE AT PRINCE'S BRIDGE	271
THE NATIONAL WAR MEMORIAL	272
TREATMENT OF RIVER YARRA BANKS BETWEEN QUEEN'S AND SPENCER-STREET (BATMAN) BRIDGES	273
ARCHITECTURAL CONTROL	274
THE PRESERVATION OF AMENITIES	275
Street beautification, p. 275. Prevention of unsightly street fixtures; cantilever or suspended verandahs, p. 276. Towers on high buildings; Spencer-street Railway Station; hoardings, signs, &c., p. 277.	

PART IX

MISCELLANEOUS

TREE PLANTING AND CROSS-SECTION OF GEELONG-ROAD	281
AIRPORT AND AERODROMES	283
STREET NAMING, NUMBERING, ETC.	283
SCHEMES SUBMITTED BY PRIVATE INDIVIDUALS	284
ROOFING JOLIMONT YARDS.. .. .	285
CROWN LANDS LEASES, ETC.	286
UNIFORM VALUATIONS	287

PART X
LEGISLATION

	Page No.
INTRODUCTORY REMARKS—NEED OF CENTRAL CONTROL	291
OUTLINES OF A TOWN PLANNING ACT OF VICTORIA	292
ACTION TAKEN BY GOVERNMENTS	297
STATEMENT OF TOWN PLANNING LEGISLATION	298
DESCRIPTION OF LEGISLATION RECOMMENDED	300
SCHEMES AFFECTING MORE THAN ONE MUNICIPALITY	301
REGIONAL AND JOINT SCHEMES	301
LOCAL GOVERNMENT ACT	301
OTHER LEGISLATION	302

PART XI
CONCLUSION

COLLECTION OF DATA	304
MUNICIPAL RECORDS ; UNIFORM SCALE OF PLANS	304
MEETINGS, CONFERENCES, &C.	304
STATEMENT OF MEMBERS' ATTENDANCES	305
ACKNOWLEDGMENTS	305
REQUESTS FROM BEYOND METROPOLIS	306
COST OF COMMISSION	306
CONCLUSION	307
STAFF	308
