

Character Area 2.7
You Yangs

2.7 YOU YANGS

The You Yangs are a granitic outcrop that is part of the southern reaches of the Great Dividing Range. The formation is a series of ridges which rise 364m from the flat volcanic plain, creating a distinctive silhouette that dominates the horizon. The landform can be seen clearly from Geelong and sometimes as far away as the Mornington Peninsula across Port Phillip Bay.

Tall native trees and a sparse undergrowth of native shrubs blanket the granite escarpments.

This Character Area also takes into account the Anakie Hills to the west. These are a series of volcanic rises that visually connect the You Yangs to the Brisbane Ranges. They form gently rising slopes which are partially vegetated.

The western side of the You Yangs Regional Park is subject to quarrying activity.

Key Features

- Distinctive landmark silhouette visible from a distance
- Exposed granite rocks and faces
- Eroded granite forms a blanket of sandy soil
- Undeveloped character

Settlements

- No notable settlements



The distinctive silhouette of the You Yangs



Looking north from Granite Road towards the upland rise which connects the You Yangs to the Brisbane Ranges



Exposed granite rocks within the You Yangs Park

Figure 1 You Yangs Overview

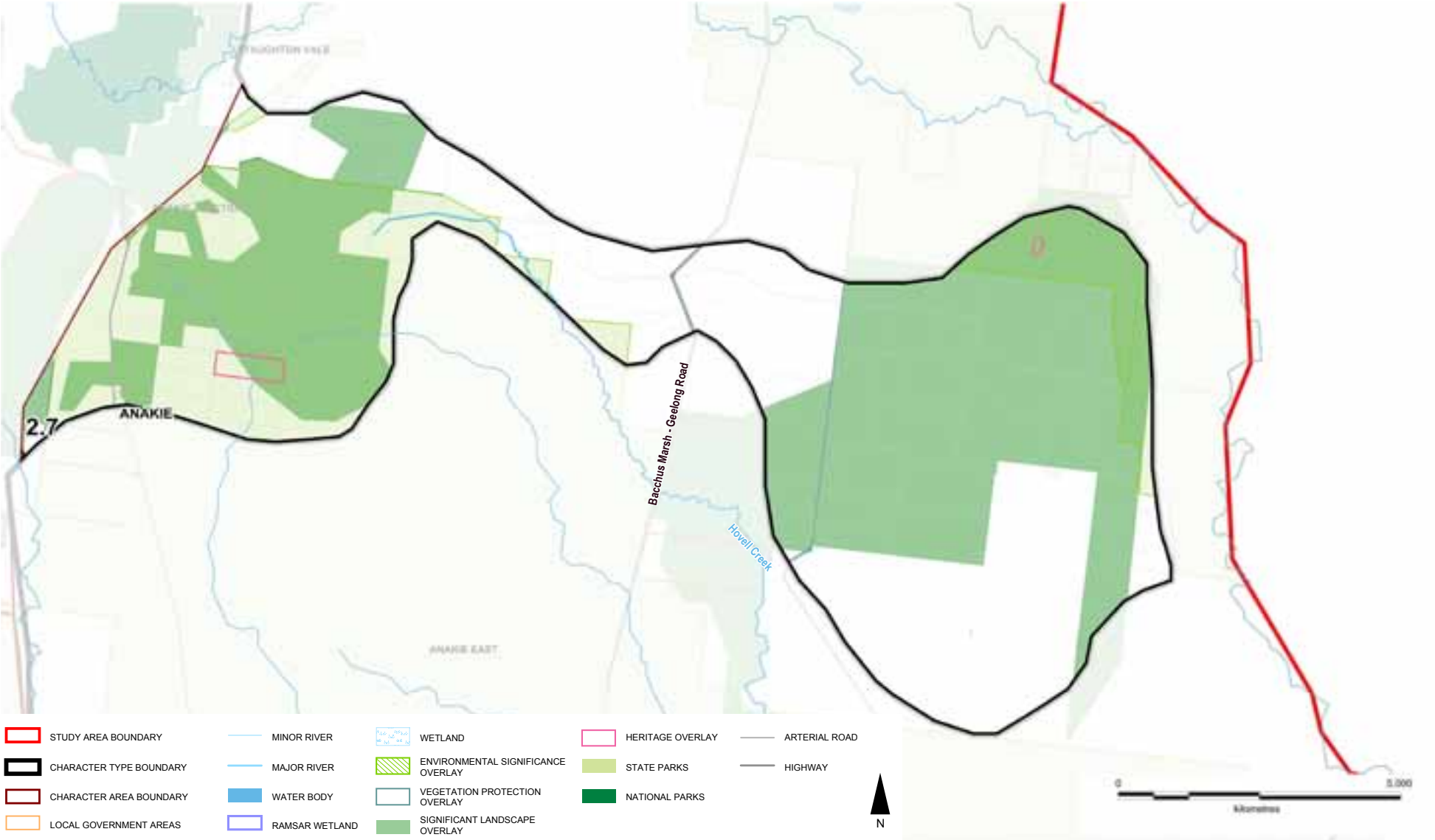


Figure 2 You Yangs Landform

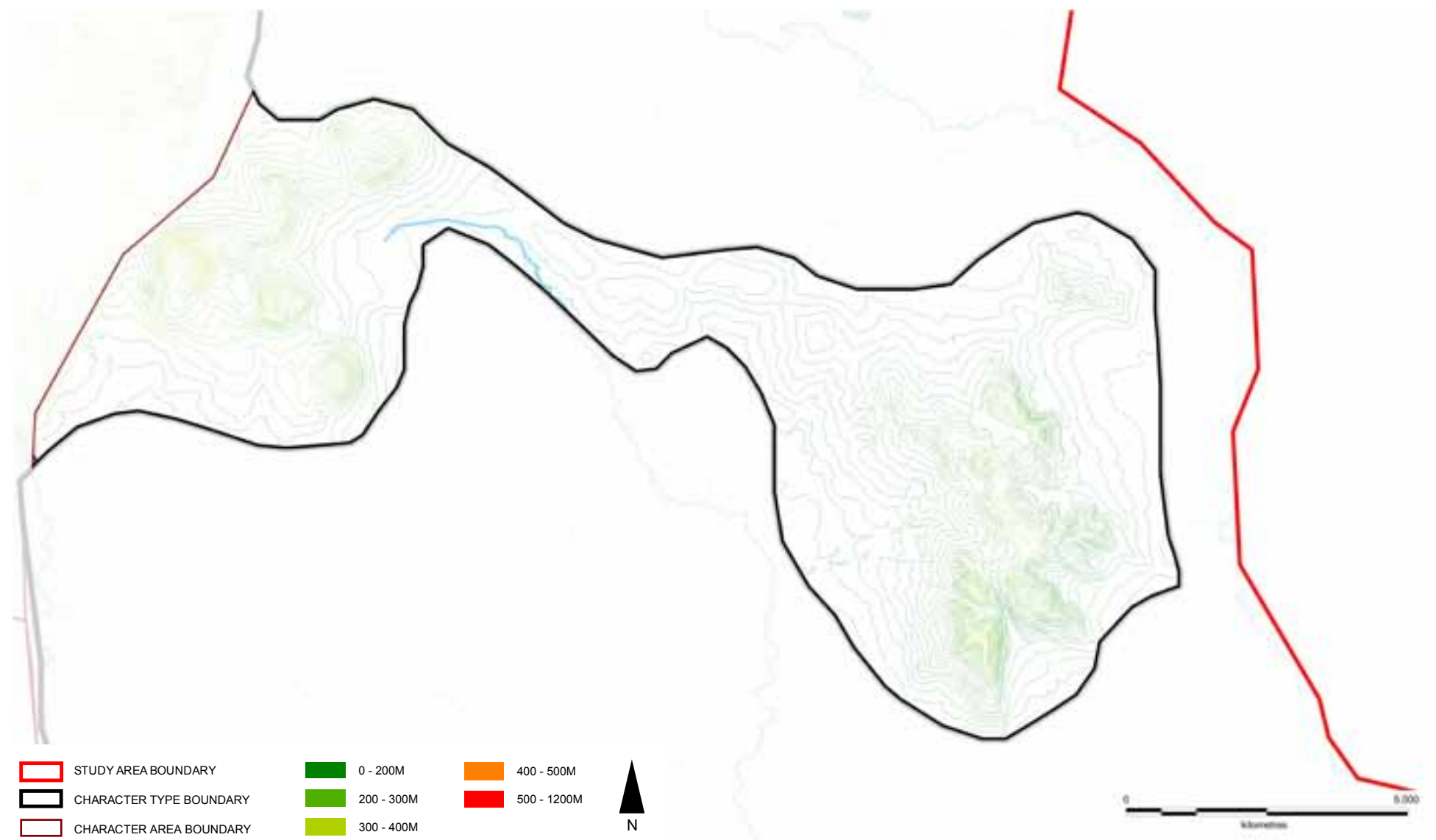
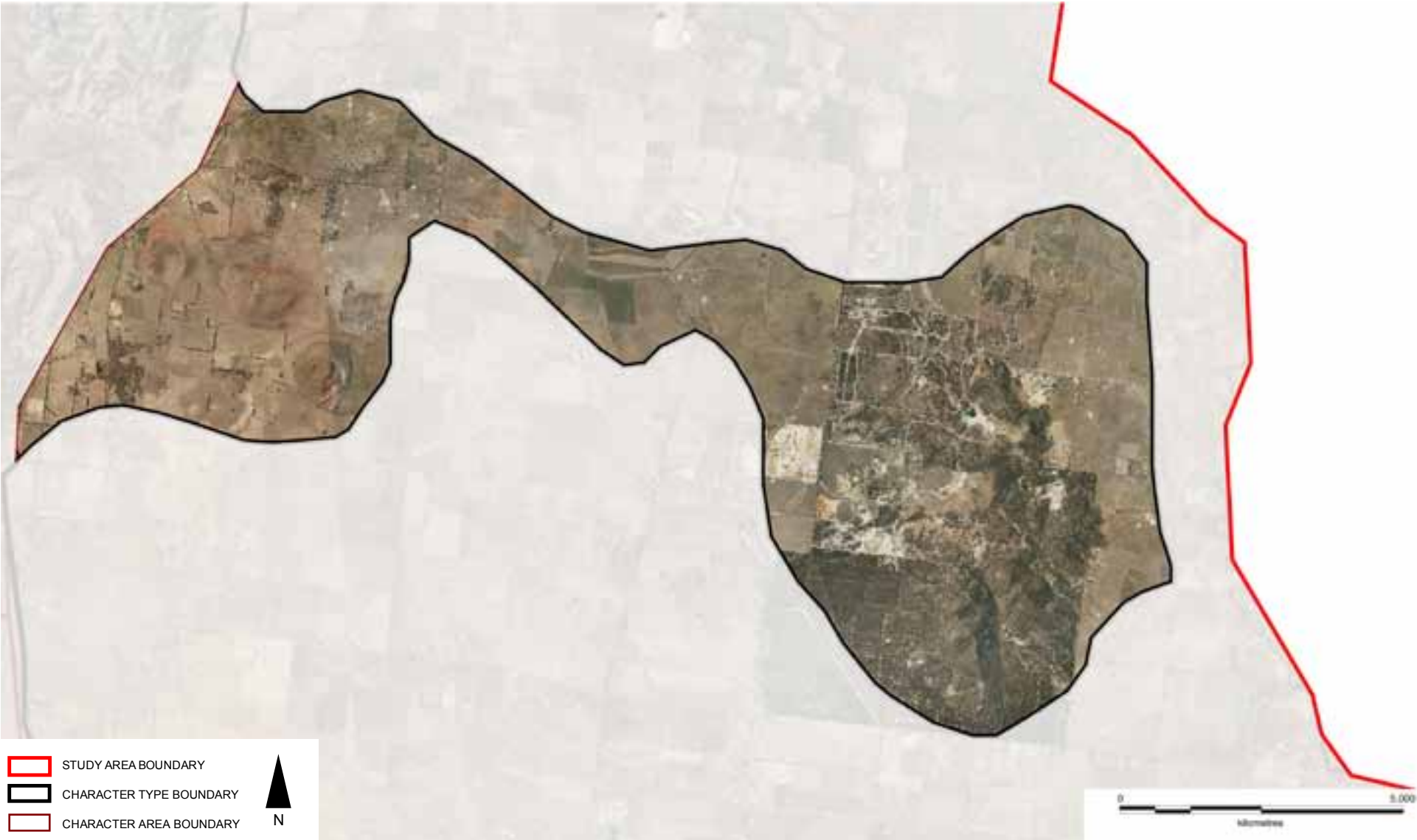


Figure 3 You Yangs Aerial



PATTERN OF VIEWING

The main viewing corridors for this Character Area are:

- Princes Freeway
- Sandy Creek Road
- Branch Road
- Bacchus Marsh - Geelong Road
- Granite Road
- Little River-Ripley Road
- You Yangs Road
- Ripley Road

The granite rises of the You Yangs can be seen on the horizon from as far away as Melbourne. The Bacchus Marsh - Geelong Road allows fantastic views of this jagged silhouette.

Within the You Yangs Regional Park views are narrow, contained by tall vegetation. Viewpoints within the park, such as the Flinders Peak Lookout, provide panoramic views over the volcanic plain and towards the Brisbane Ranges.

Granite Road runs through the centre of the connecting uplands ridge and follows the contours of the land. Views are consistently filtered by native roadside vegetation with longer views available at high points.



A typical view from within the You Yangs Regional Park



Looking east on Granite Road



Looking east towards the You Yangs from the Bacchus Marsh - Geelong Road



Looking west towards the You Yangs from the Brisbane Ranges



Looking west from the Princes Freeway

LANDSCAPE VALUES

Historic

- You Yangs, historically significant according to Parks Victoria's *You Yangs National Park's Park Notes* (2010)
 - name comes from the Aboriginal word 'Wurdi Youang' or 'Ude Youang' meaning big mountain in the middle of the plain
 - granitic rock wells, created by the Yawangi balug as permanent water storage
 - explorer Matthew Flinders & 3 of his crew were first Europeans to see the You Yangs & climbed to the highest point 'Flinders Peak' in 1 May 1802
 - remains of gravel pits which reflect how European settlers used the area as a source of gravel & timber

Environmental/Scientific

- You Yangs
 - Prominent landscape feature providing panoramic views of Geelong & highly visible from the surrounding area
- Eastern edges of the Brisbane Ranges, including the Rowsley Scarp and its foothills, and the granitic and scoria Anakie Hills, visually prominent and significant landscape features
- Mount Rothwell Biodiversity Interpretation Centre, largest predator free ecosystem in Victoria.
- Western Grasslands Reserves which cover a small part of this Character Area, contain the largest consolidated area of Natural Temperate Grassland remaining on the Victorian Volcanic Plain, and support and provide potential habitat for a range of threatened species on the EPBC Act list
 - supported species: Golden Sun Moth (critically endangered), Striped Legless lizard (vulnerable), Spiny Rice-flower (critically endangered), Large-headed Fireweed (vulnerable), Clover Glycine (vulnerable)
 - potential habitat for: Plains Wanderer (vulnerable), other specialist grassland species e.g. Button Wrinklewort (endangered), Grassland Earless-dragon (endangered)
- Grassland within the Werribee Plains Hinterland in Victorian Volcanic Plain Bioregion, bioregion's native vegetation is one of the most depleted in the State including some threatened species on the EPBC list mentioned above & Sunshine Duiris (endangered), Orange-bellied Parrot (critically endangered), Striped Legless Lizard (vulnerable), Swift Parrot (endangered)
- Mount Anakie Scenic Reserve, a protected areas on the IUCN list, Category III (Natural Monument or Feature)

Social

- Fairy Park, Anakie, tourist attraction
- Rock climbing destination
- Fred Williams, a famous Australian artist, painted a series of pictures of the You Yangs including:
 - You Yangs Landscape II (1963), held by National Gallery of Australia
 - You Yangs Landscape III (1963), held by National Gallery of Victoria
 - You Yangs Landscape (1967)
- Bunjil geoglyph, You Yangs Regional Park, spectacular stone structures which depict Bunjil, the traditional Creator Spirit of the Wthaurong Aboriginal people, created to commemorate the Melbourne 2006 Commonwealth Games



Bunjil Geoglyph by Andrew Rogers

LANDSCAPE PROTECTION & MANAGEMENT

Planning Scheme Policies & Controls

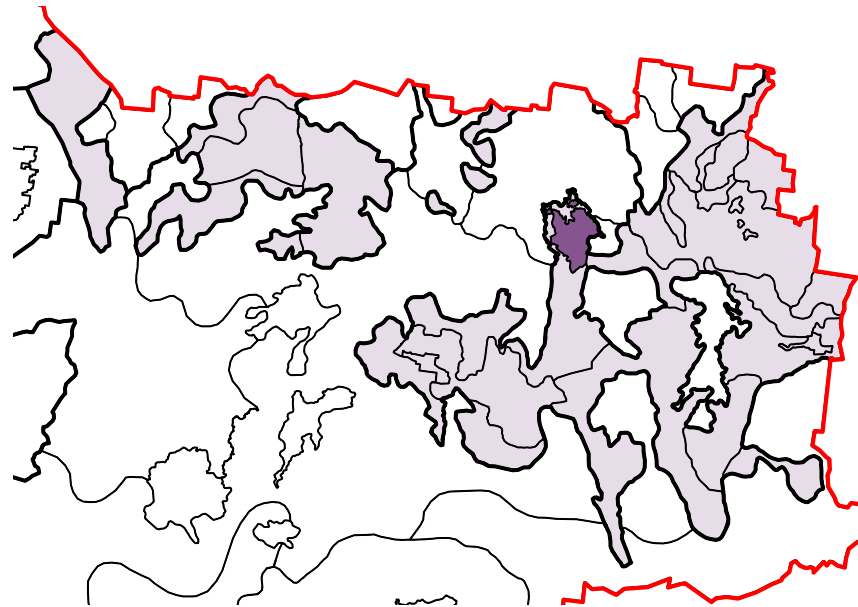
The Greater Geelong Planning Scheme applies to this Character Area.

Key Zones

- FZ
- PCRZ
- RCZ
- SUZ7: Earth & Energy Resources Industry

Key Overlays

- SLO1: Foothills of the You Yangs
- SLO5: Edges of the Brisbane Ranges and Anakie
- ESO3: Western Grassland Reserves
- ESO4: Grassland within the Werribee Plains Hinterland
- VPO1: Significant Roadsides & Linear Reserves
- HO2, HO295: Homesteads
- WMO / BMO



Character Area 2.8

Creswick Forests & Hills

2.8 CRESWICK FORESTS & HILLS

This Character Area is defined by a region of dense vegetation cover and hilly topography that contrasts with the surrounding open, agricultural areas. It stretches from the south of the township of Creswick to the outskirts of Ballarat.

The area contains the Creswick Regional Park, which is interspersed with a number of large timber plantations to the south. Much of this area features coppiced regrowth, which is a relic of the gold mining history when all the forests were decimated for timber production. While the production of timber is an important industry to this area, it is also known as the home of reforestation. Plantations are often screened from the roadside by native vegetation.

Key Features

- Plantations
- State forests
- Hilly topography
- Winding roads
- Mining remains
- Undeveloped character

Settlements

- Creswick



New plantation and native roadside vegetation



Native vegetation within the State Forest



Native vegetation with sparse understorey

Figure 1 Creswick Forests & Hills Overview

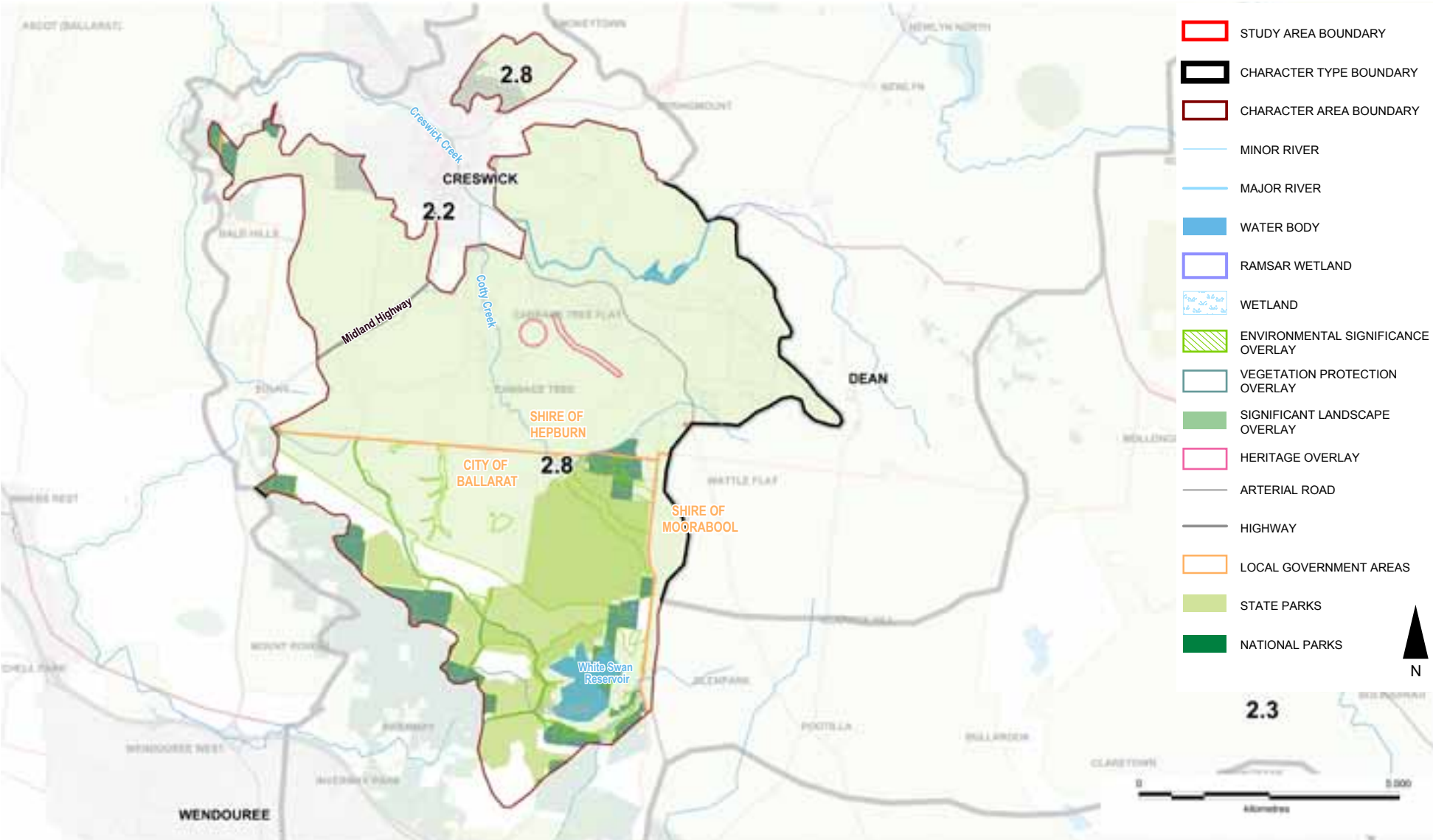


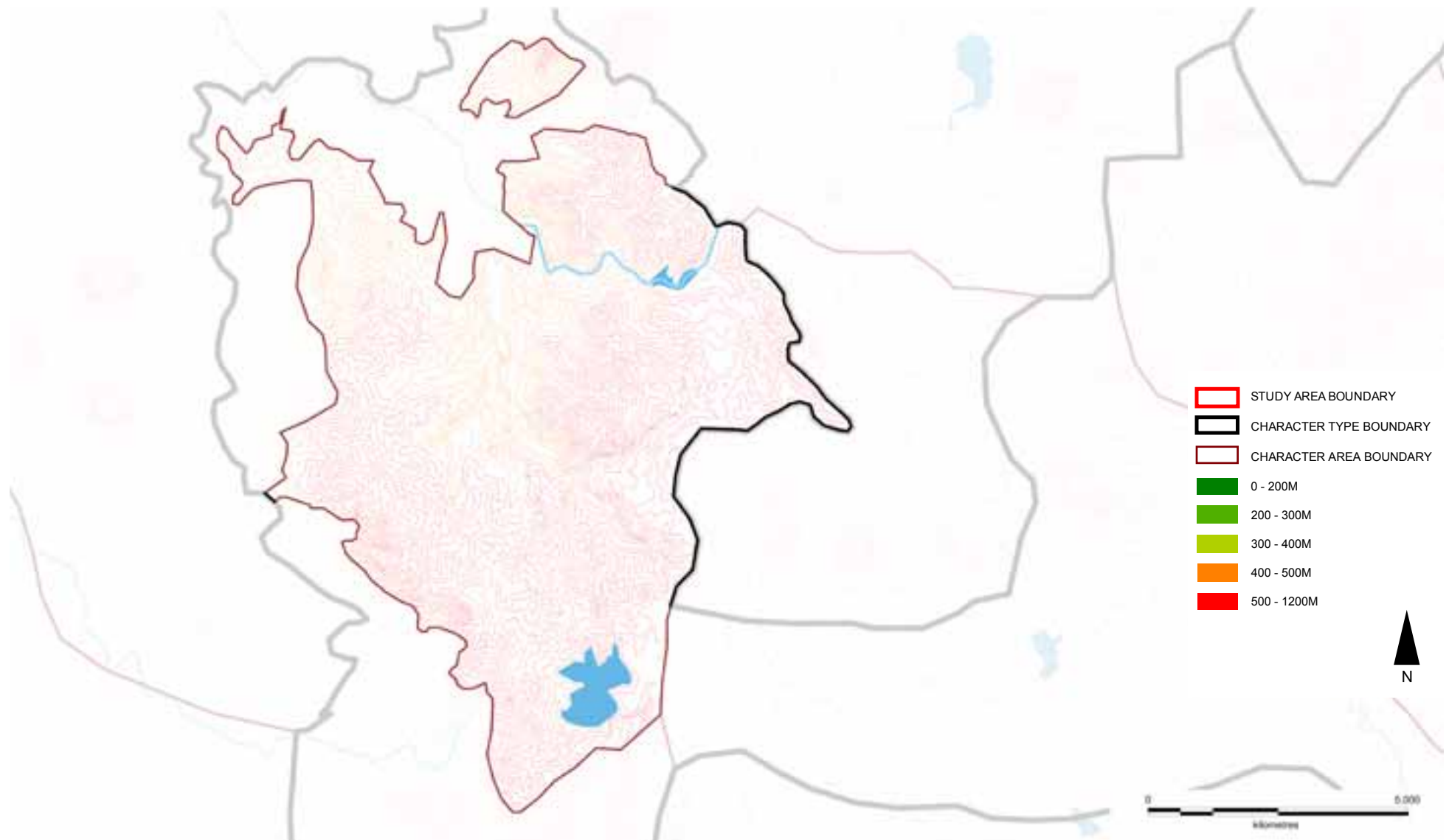
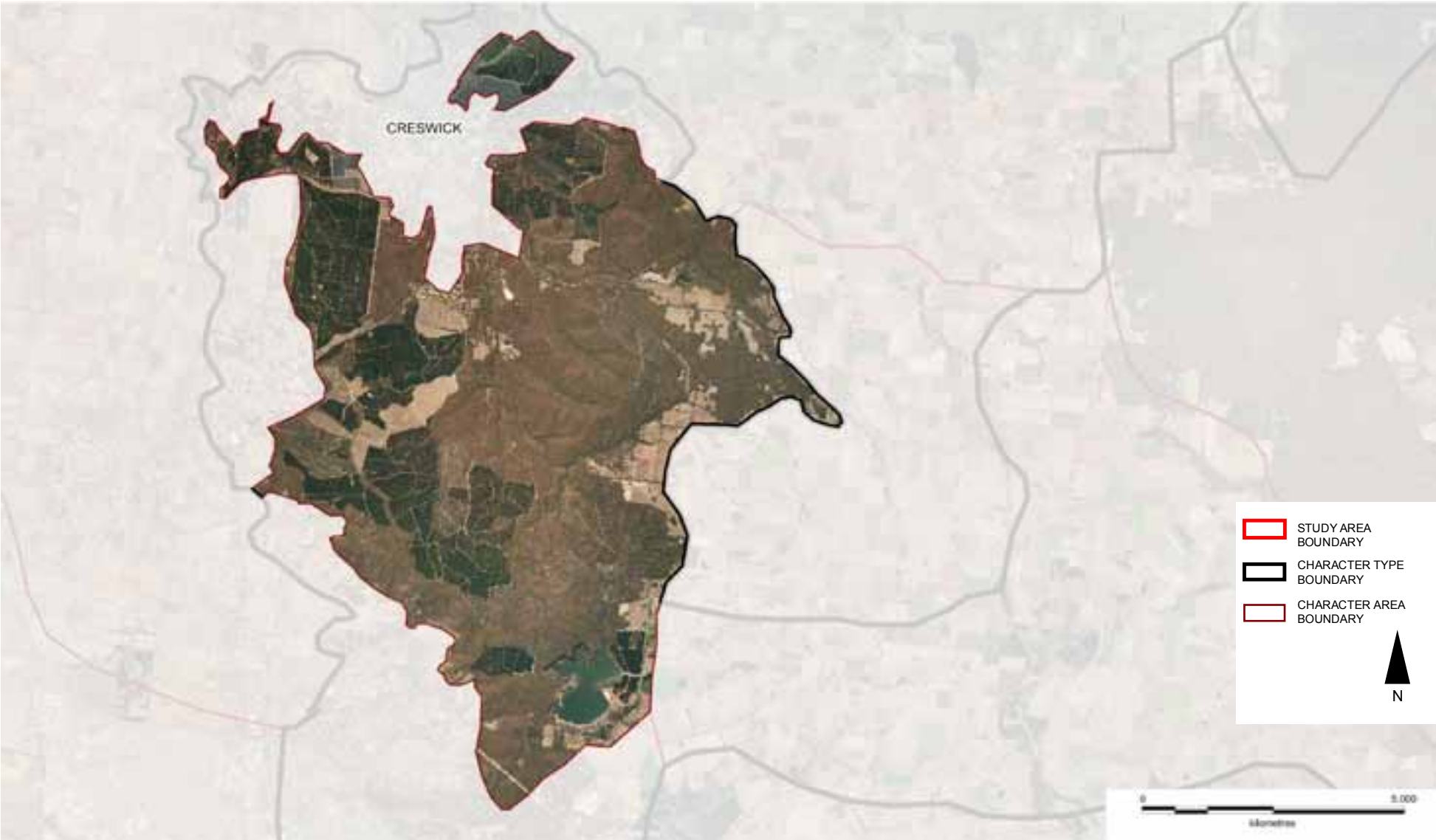
Figure 2 Creswick Forests & Hills Landform & Waterform

Figure 3 Creswick Forests & Hills Aerial



PATTERN OF VIEWING

The main viewing corridors for this Character Areas are:

- Midland Highway
- Melbourne Road

Views are narrow, contained by thick native roadside vegetation and bends in the road.

While these two viewing corridors dissect the area numerous smaller roads traverse the thickly vegetated hills. Again, on these roads, views are confined.



Looking south on Melbourne Road



Looking south on the Midland Highway



Contained view along Wrights Gully Road



Contained view from within a plantation on Standard Road

LANDSCAPE VALUES

Historic

- Mining remains, discovered underneath the forest understorey after a controlled burn
 - round shafts of Chinese mines
 - square shafts of European mines
- Berry Deep Leads Mine System, Cowies Road, Creswick
 - on file with National Trust
 - indicative place on Register of the National Estate for being a material relic of key phase in Victorian economy & key landform feature in central goldfields district

Environmental/Scientific

- Koalas, habitats protected by Ballarat ESO5
- Known as the 'home of reforestation' after John La Gerche began replanting forests that had been felled for timber getting during the gold mining years

Social

- The Lindsay family (born and raised in Creswick in the late 1800s and early 1900s) is considered one of Australia's most important artistic families. The Lindsay children were and continued to have connections with the town well into the 20th century. There are consistent references to the Lindsay's childhood home town in both the visual art and literature produced by the Lindsay siblings throughout their careers
- An interpretive walking trail themed around the Lindsay family (The Lindsay Arts Trail) is being developed as a cultural tourist attraction for the town.
- People can still fossick for gold in Slaty Creek within the Creswick Regional Park
- Recreational values of Regional Parks include picnicking, camping, bushwalking, nature appreciation
- St Georges Lake, an old mining dam, now provides opportunities for boating, swimming, fishing and picnicking

LANDSCAPE PROTECTION & MANAGEMENT

Planning Scheme Policies & Controls

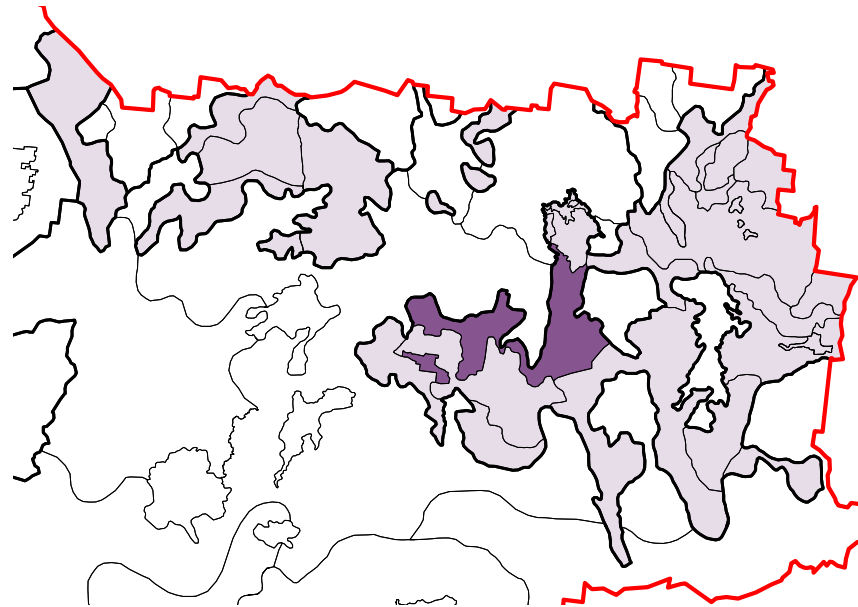
This Character Area is subject to the Ballarat, Hepburn and Moorabool Planning Schemes.

Key Zones

- FZ
- PCRZ (except Moorabool)
- RLZ at Cabbage Tree, Creswick, Sulky
- PUZ1 (except Moorabool)

Key Overlays

- Ballarat ESO1: Invermay Land Protection Area
- Ballarat ESO2: Streamside & Watercourse Protection
- Ballarat ESO3: Water Catchment Areas
- Ballarat ESO5: Koala & Koala Habitat Protection
- Hepburn ESO1: Proclaimed Catchment Protection
- Moorabool ESO1: Proclaimed Water Catchment Areas
- Hepburn HO976: Humbug Hill Hydraulic Gold Sluicing Site
- Ballarat VPO1: Native Vegetation Protection Areas
- WMO / BMO
- Moorabool DDO2: Visual Amenity & Building Design



Character Area 2.9

Rural Living

2.9 RURAL LIVING

This Character Area is defined by rural residential and hobby farm development that predominantly occurs outside the boundaries of larger towns and settlements such as Ballarat. It is characterised by numerous buildings and structures within the landscape, sited on lots of around 5-10 hectares. The area is highly modified with abundant exotic vegetation, built development and managed paddocks.

Subdivisions are smaller close to large towns and regional centres such as Ballarat, becoming larger as locations become more remote. The denser part of the Character Area is in proximity to Ballarat, and in the forested edges to the south of Creswick.

Buildings are generally single storey, with sheds and outbuildings located close by. Some are set within vegetation and are mostly screened from view. Others sit adjacent to viewing corridors and feature exotic planting to boundary edges.

Key Features

- Regular built form
- Residential subdivisions
- Exotic vegetation
- Mount Buninyong

Settlements

Settlements are numerous and include:

- | | |
|-------------------|----------------|
| ▪ Ballarat (part) | ▪ Linton |
| ▪ Buninyong | ▪ Pittong |
| ▪ Ross Creek | ▪ Snake Valley |
| ▪ Scarsdale | ▪ Happy Valley |



Residential dwelling within a bushland setting



Numerous properties are visible from the roadside



Dwellings visible from Mount Bunninyong

Figure 1 Rural Living Overview

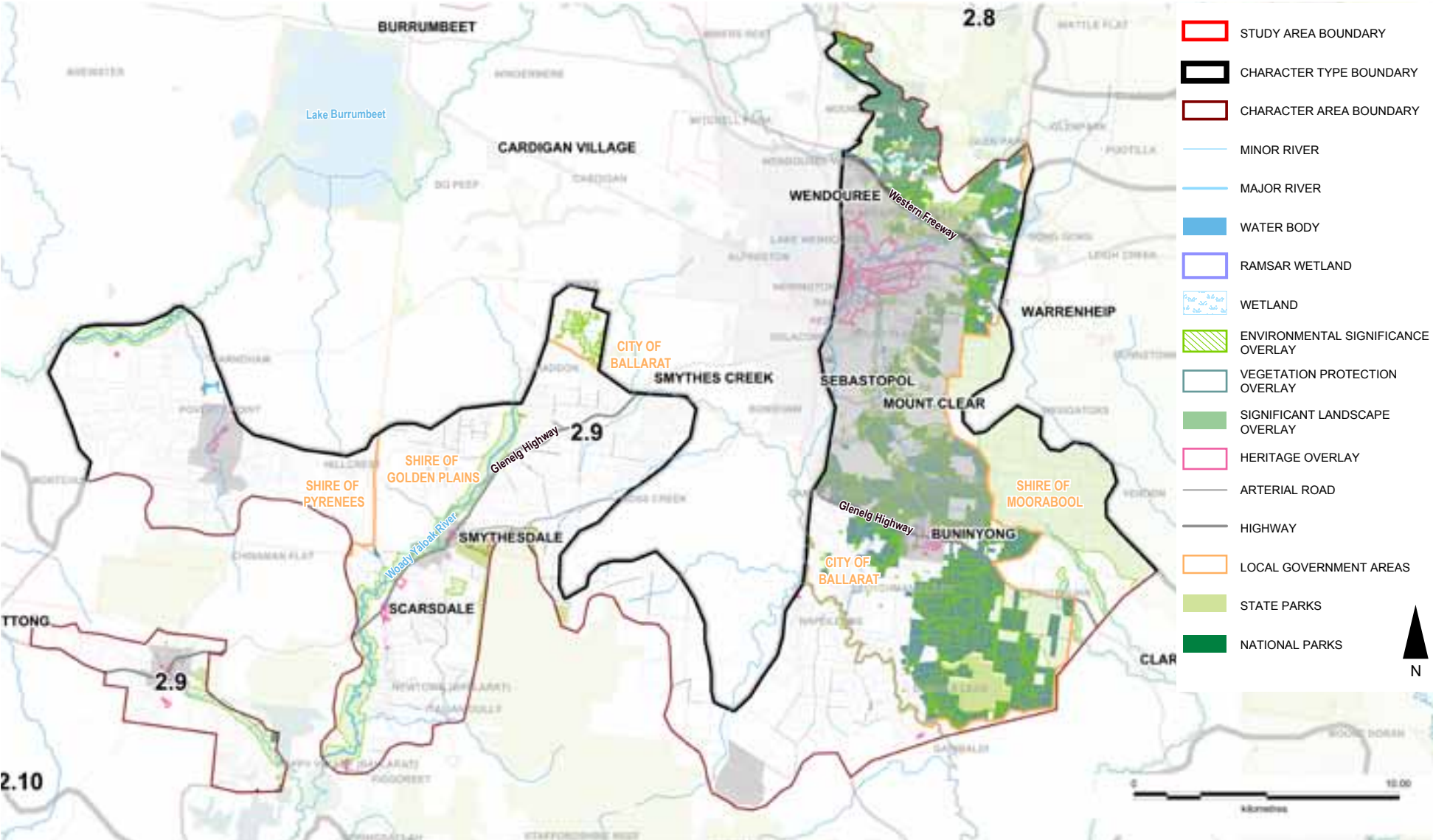


Figure 2 Rural Living Landform

Figure 3 Rural Living Aerial



PATTERN OF VIEWING

The main viewing corridors for this Character Area are:

- The Glenelg Highway
- The Midland Highway
- Ross Creek Road
- Colac-Ballarat Road
- Smythesdale - Snake Valley Road
- Buninyong - Mount Mercer Road

Where topography allows, views are medium to long in range, terminating in a wooded backdrop. Numerous properties are visible within the field of view at high points.

Where vegetation becomes more dense views are contained with single dwellings or structures visible.

Views across the Character Area are available from the summit of Mount Buninyong.



Looking south on the Glenelg Highway north of Scarsdale properties sit adjacent to viewing corridors with an avenue of exotic vegetation



Smaller subdivisions screened by vegetation on Heather Close east of Bunninyong



On larger subdivisions properties are set back from the roadside and often screened from view by topography or vegetation



View west from Mount Bunninyong



Large property sited on a high point is highly visible in the landscape

LANDSCAPE VALUES

Historic

- Mining remains, discovered underneath the forest understorey after a controlled burn
 - round shafts of Chinese mines
 - square shafts of European mines
- Mount Buninyong, registered on the Register of the National Estate due to its high geological & geomorphological significance and being an excellent example of a composite volcano
- Mount Clear mining landscape, characterised by ridge lines, creek banks, quartz veins & modifications due to gold mining, listed on the Heritage Inventory
- Eureka Stockade Gardens, listed on National Heritage List for its association with the Eureka Stockade Rebellion, 1854
- Reserve set aside at Chepstowe 1865-1901 for Aboriginal use

Environmental/Scientific

- Koalas, habitats protected by Ballarat ESO5
- Protected areas on the IUCN list
 - Mount Buninyong Scenic Reserve & Smythesdale Streamside Reserve, Category III (Natural Monument or Feature)
 - Buninyong H18, Carngham, Haddon Common, Scarsdale, Smythesdale H15 & H16 & Watsons Hill Bushland Reserves & Scarsdale Natural Features Reserve, Category IV (Habitat/Species Management Area)

LANDSCAPE PROTECTION & MANAGEMENT

Planning Scheme Policies & Controls

This Character Area is subject to the Ballarat, Golden Plains, Moorabool and Pyrenees Planning Schemes.

Key Zones

- FZ
- PCRZ (Golden Plains and Pyrenees only)
- RLZ at Brown Hill, Buninyong, Cambrian Hill, Canadian, Carngham / Chepstowe, Durham Lead, Hillcrest / Snake Valley, Invermay, Lal Lal, Linton, Haddon, Happy Valley, Magpie, Mount Clear, Mount Helen, Napoleons, Nerrina, Nintingbool, Newton, Ross Creek, Scotchmans Lead, Scarsdale, Smythes Creek, Smythesdale, Warrenheip
- RCZ (Ballarat & Golden Plains only)
- RAZ (Golden Plains only)
- PUZ (except Pyrenees)

Key Overlays

SLO

- Golden Plains SLO12: Former Smythesdale Botanic Gardens

ESO

- Ballarat ESO1: Invermay Land Protection Area
- Ballarat ESO2: Streamside & Watercourse Protection
- Ballarat ESO5: Koala & Koala Habitat Protection
- Golden Plains ESO2: Watercourse Protection
- Golden Plains ESO3: Mount Misery Creek, Surface Hill – Smythesdale, Klein & Swanston Road Area, Dereel, Swamp Road – Dereel, Yarrowee Creek, Teesdale Reserve, Moorabool Valley, Sutherland Creek, Meredith, Steiglitz
- Moorabool ESO1: Proclaimed Water Catchment Areas
- Moorabool ESO2: Waterway Protection
- Pyrenees ESO2: Watercourse Protection

HO

- Ballarat Ho133
- Golden Plains HO90, 102, 112, 143, 144, 152, 154, 155
- Pyrenees HO41, HO45

VPO

- Ballarat VPO1: Native Vegetation Protection Areas
- Golden Plains VPO2: Bushland Reserves & Roadside Vegetation Areas

WMO / BMO

DDO

- Golden Plains DDO7: Rural Living Zone Outbuildings & Sheds
- Moorabool DDO2: Visual Amenity & Building Design

RO

- Golden Plains RO2: Taylors Road, Haddon
- Pyrenees RO18: Former Townships of Snake Valley & Carngham Environs
- Pyrenees RO19: Former Township of Chepstowe & Baillies Creek Environs

Other

- Golden Plains LSIO
- Ballarat RFO
- Golden Plains SMO
- Pyrenees EAO

