

- Legend**
- Structure**
- Regulator
 - Culvert
 - Spillway
 - Hardstand
 - Containment Bank
 - Access Tracks
 - Inundation Area (26/04/2020)
 - Minor Road

DRAFT

Spatial Reference
 Name: GDA 1994 MGA Zone 54
 Datum: GDA 1994
 Projection: Transverse Mercator

Project No. IS297701

0 125 250 500
 Meters

DATA SOURCES
 © Commonwealth of Australia (Geoscience Australia) 2006 Geodata Topo 250k Series 3; Vicmap Data © State of Victoria 2020; GHD 2020.

COPYRIGHT: The concepts and information contained in this document are the copyright of JV:GHD-Jacobs. Use or copying of the document in whole or in part without the written permission of Jacobs constitutes an infringement of copyright. JV:GHD-Jacobs does not warrant that this document is definitive nor free of error and does not accept liability for any loss caused or arising from reliance upon information provided herein.

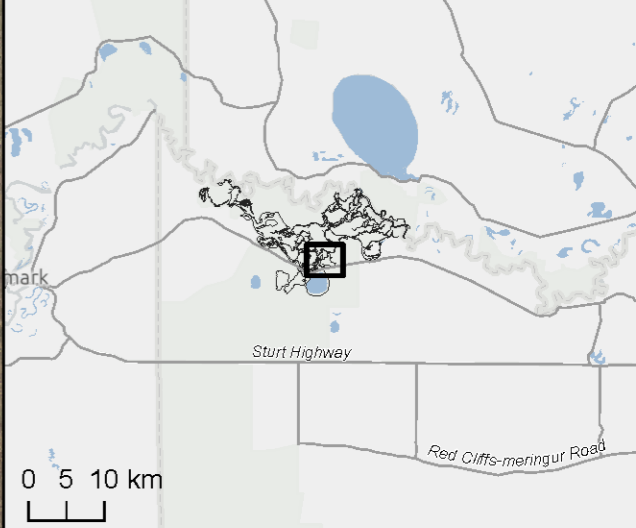


Figure 5: Lindsay Island - Summary of Works - Crankhandle West - Issued for Review Design



Legend

Structure

- Regulator
- Spillway
- ★ Drop Structure
- Containment Bank
- Channel
- Access Tracks
- Inundation Area (26/04/2020)
- Minor Road

DRAFT

N

Spatial Reference
 Name: GDA 1994 MGA Zone 54
 Datum: GDA 1994
 Projection: Transverse Mercator

Project No. IS297701

0 125 250 500
 Meters

DATA SOURCES
 © Commonwealth of Australia (Geoscience Australia) 2006 Geodata Topo 250k Series 3; Vicmap Data © State of Victoria 2020; GHD 2020.

COPYRIGHT: The concepts and information contained in this document are the copyright of JV:GHD-Jacobs. Use or copying of the document in whole or in part without the written permission of Jacobs constitutes an infringement of copyright. JV:GHD-Jacobs does not warrant that this document is definitive nor free of error and does not accept liability for any loss caused or arising from reliance upon information provided herein.

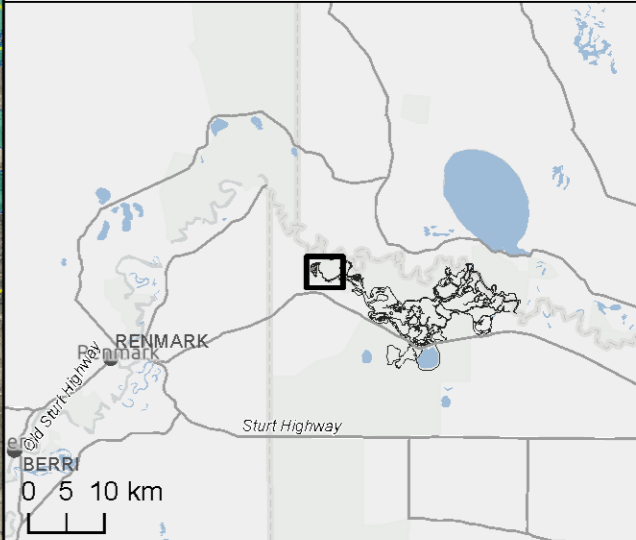


Figure 6: Lindsay Island - Summary of Works - Crankhandle - Issued for Review Design



- Legend**
- Structure**
- Regulator
 - Spillway
 - ★ Drop Structure
 - Containment Bank
 - Channel
 - Access Tracks
 - Inundation Area (26/04/2020)
 - Minor Road
 - Watercourse Stream

DRAFT

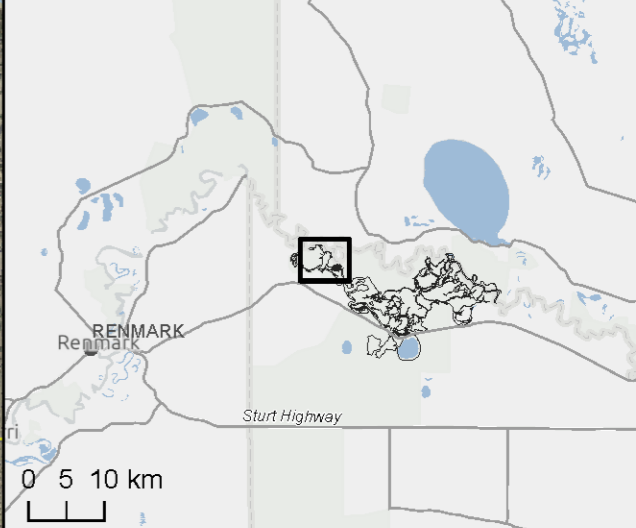
Spatial Reference
 Name: GDA 1994 MGA Zone 54
 Datum: GDA 1994
 Projection: Transverse Mercator

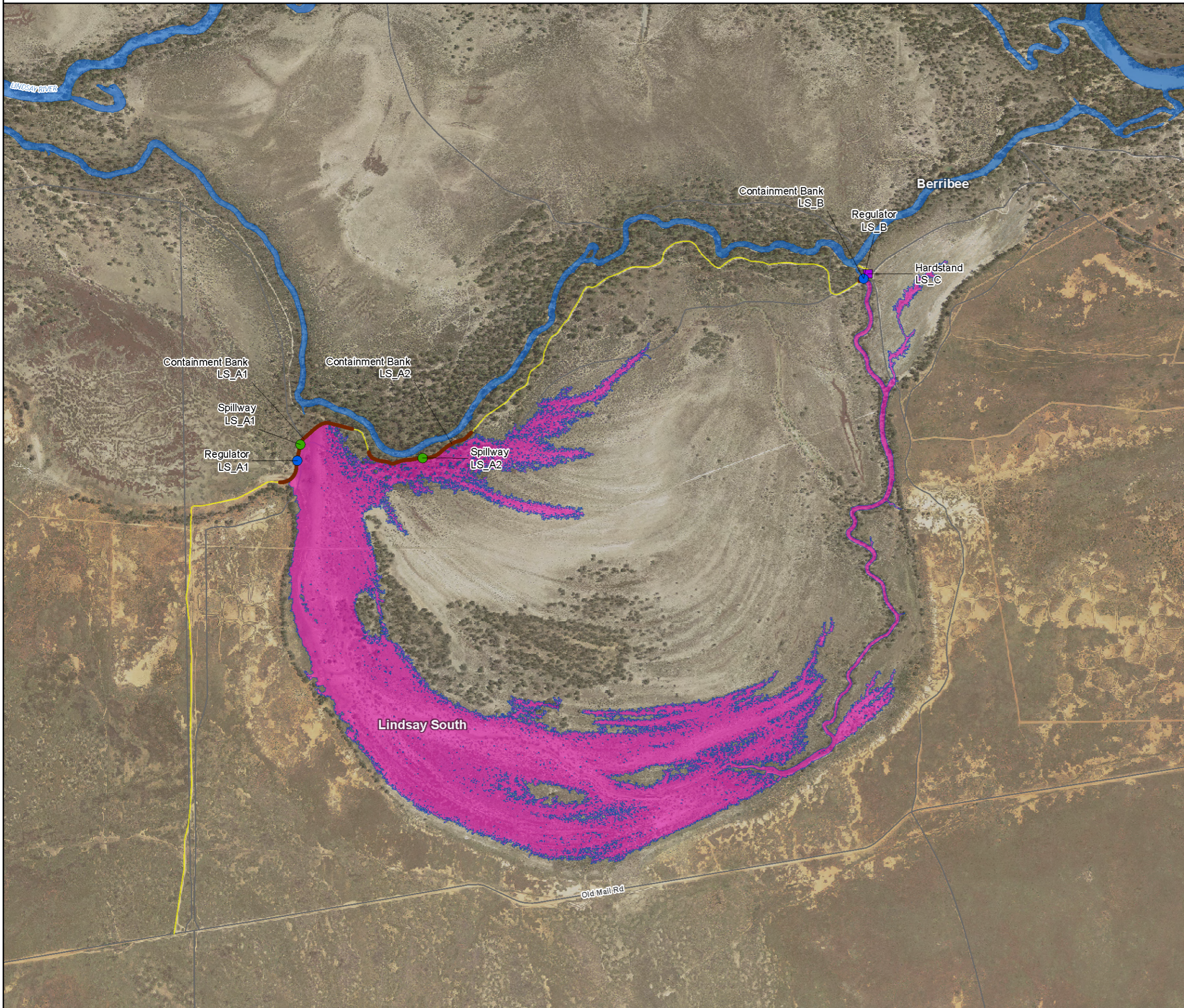
Project No. IS297701

0 125 250 500
 Meters

DATA SOURCES
 © Commonwealth of Australia (Geoscience Australia) 2006 Geodata Topo 250k Series 3; Vicmap Data © State of Victoria 2020; GHD 2020.

COPYRIGHT: The concepts and information contained in this document are the copyright of JV:GHD-Jacobs. Use or copying of the document in whole or in part without the written permission of Jacobs constitutes an infringement of copyright. JV:GHD-Jacobs does not warrant that this document is definitive nor free of error and does not accept liability for any loss caused or arising from reliance upon information provided herein.





- Legend**
- Structure
- Regulator
 - Spillway
 - Hardstand
 - Containment Bank
 - Access Tracks
 - Inundation Area (26/04/2020)
 - Minor Road

DRAFT

Project No. IS297701

Spatial Reference
 Name: GDA 1994 MGA Zone 54
 Datum: GDA 1994
 Projection: Transverse Mercator

Scale: 0 125 250 500 Meters

DATA SOURCES
 © Commonwealth of Australia (Geoscience Australia) 2006 Geodata Topo 250k Series 3; Vicmap Data © State of Victoria 2020; GHD 2020.

COPYRIGHT: The concepts and information contained in this document are the copyright of JV:GHD-Jacobs. Use or copying of the document in whole or in part without the written permission of Jacobs constitutes an infringement of copyright. JV:GHD-Jacobs does not warrant that this document is definitive nor free of error and does not accept liability for any loss caused or arising from reliance upon information provided herein.

