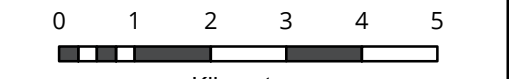


- Legend**
- Study area
  - Local government area
- Planning Zone**
- ACZ Activity Centre
  - BZ Commercial Zone (B1Z, B2Z, B3Z, B4Z, B5Z)
  - CZ Commercial 1 or 2 Zone (C1Z, C2Z)
  - CA Commonwealth Land Not Controlled
  - CDZ Comprehensive Development Zone
  - FZ Farming Zone
  - GRZ General Residential
  - GWAZ Green Wedge A Zone
  - GWZ Green Wedge Zone
  - IN1Z Industrial 1 Zone
  - IN3Z Industrial 3 Zone
  - LDRZ Low Density Residential Zone
  - MUZ Mixed Use Zone
  - NRZ Neighbourhood Residential Zone
  - PCRZ Public Conservation and Resource Zone
  - PDZ Priority Development Zone
  - PPRZ Public Park and Recreation Zone
  - PUZ Public Use Zone
  - R1Z General Residential
  - RCZ Rural Conservation
  - RDZ Road
  - RGZ Residential Growth
  - RLZ Rural Living Zone
  - SUZ Special Use Zone
  - TZ Township
  - UFZ Urban Floodway
  - UGZ Urban Growth

**Figure 2. Overview Planning zones**

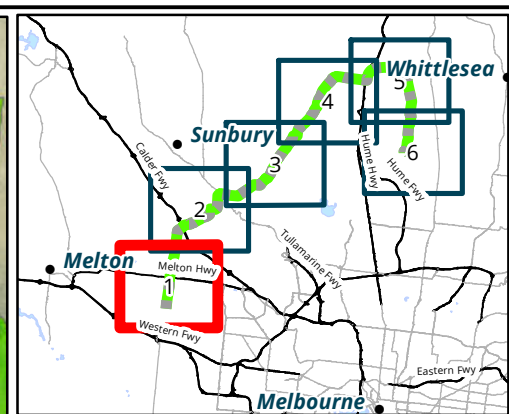
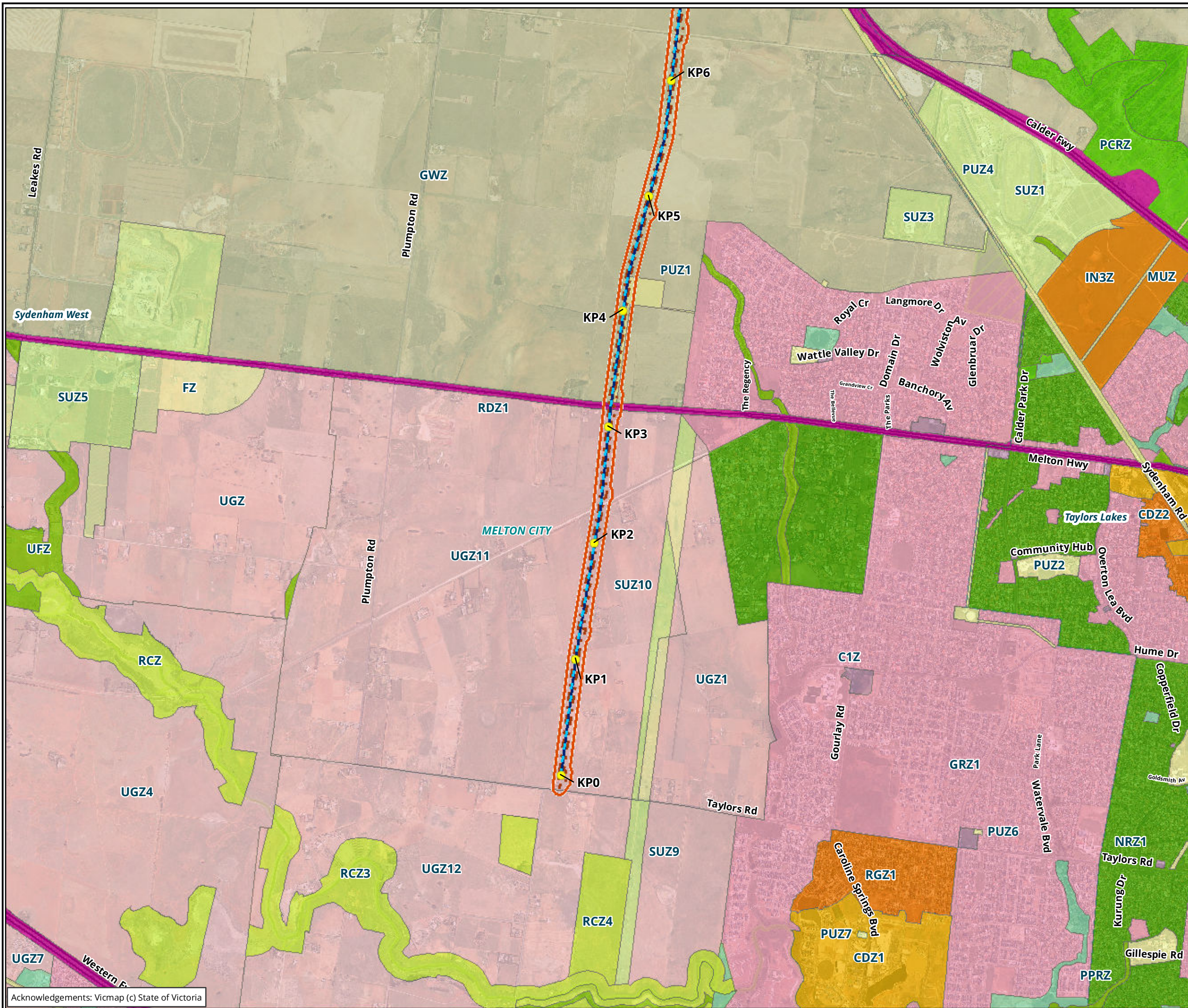


Kilometers  
Scale: 1:100,000 @ A3  
Coordinate System: GDA 1994 MGA Zone 55

**biosis**  
Biosis Pty Ltd  
Albury, Ballarat, Melbourne, Newcastle, Sydney, Wangaratta & Wollongong

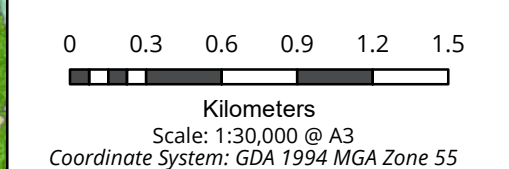
Matter: 29801, Date: 11 April 2019, Checked by: MD, Drawn by: DK, Last edited by: dkazemi  
Location: \\bio-data-01\matters\29800s\29801\mapping\29801\_F2\_Planning\_Zones

Acknowledgements: Vicmap (c) State of Victoria



- Legend**
- Study area
  - + Kilometre Point
  - Preliminary Pipeline Alignment
  - Construction footprint
  - Local government area
- Planning Zone**
- CZ Commercial 1 or 2 Zone (C1Z, C2Z)
  - CDZ Comprehensive Development Zone
  - FZ Farming Zone
  - GRZ General Residential
  - GWZ Green Wedge Zone
  - IN3Z Industrial 3 Zone
  - MUZ Mixed Use Zone
  - NRZ Neighbourhood Residential Zone
  - PCRZ Public Conservation and Resource Zone
  - PPRZ Public Park and Recreation Zone
  - PUZ Public Use Zone
  - RCZ Rural Conservation
  - RDZ Road
  - RGZ Residential Growth
  - SUZ Special Use Zone
  - UFZ Urban Floodway
  - UGZ Urban Growth

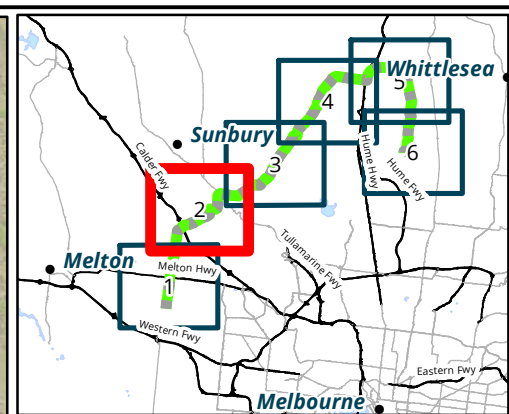
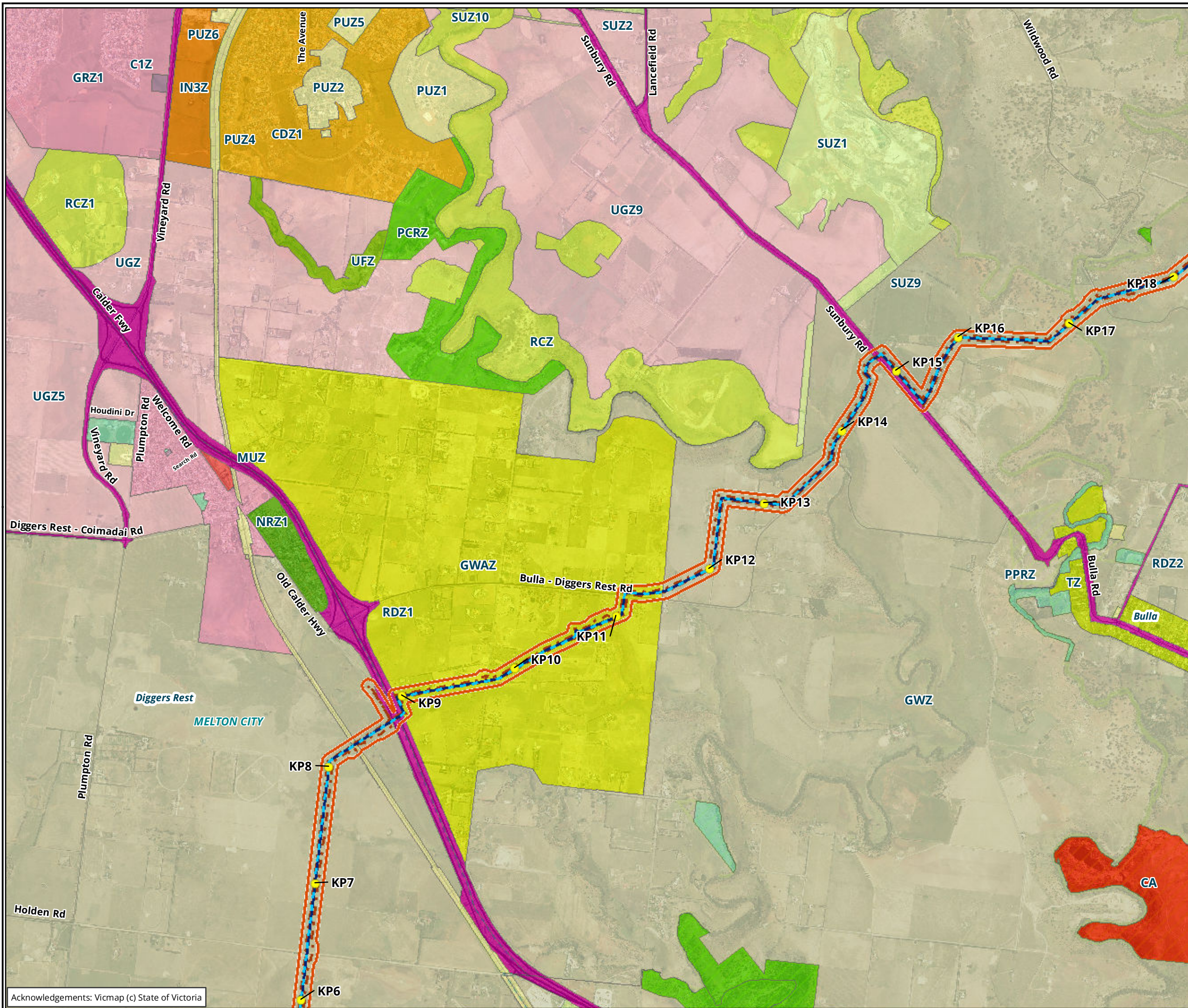
**Figure 2.1 Planning zones**



N  
 Biosis Pty Ltd  
 Albury, Ballarat, Melbourne,  
 Newcastle, Sydney, Wangaratta & Wollongong

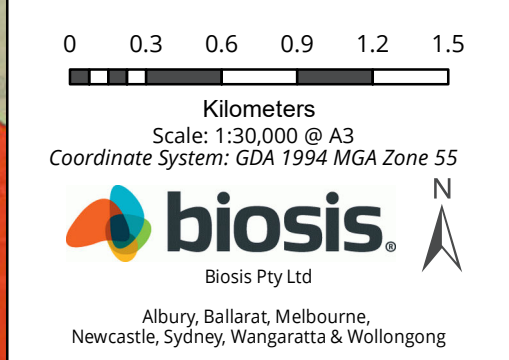
Acknowledgements: Vicmap (c) State of Victoria

Matter: 29801,  
 Date: 11 April 2019,  
 Checked by: MD, Drawn by: DK, Last edited by: dkazemi  
 Location: \\bio-data-01\matters\29800s\29801\mapping\29801\_F2\_Planning\_Zones



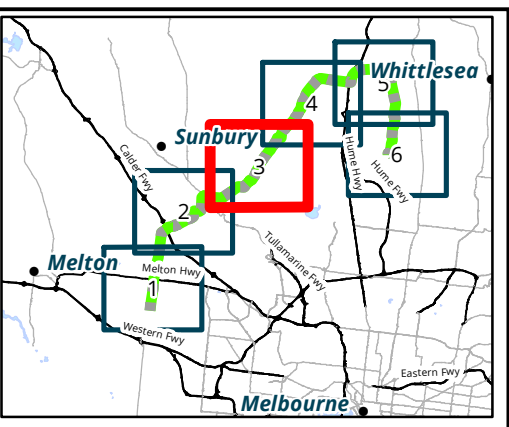
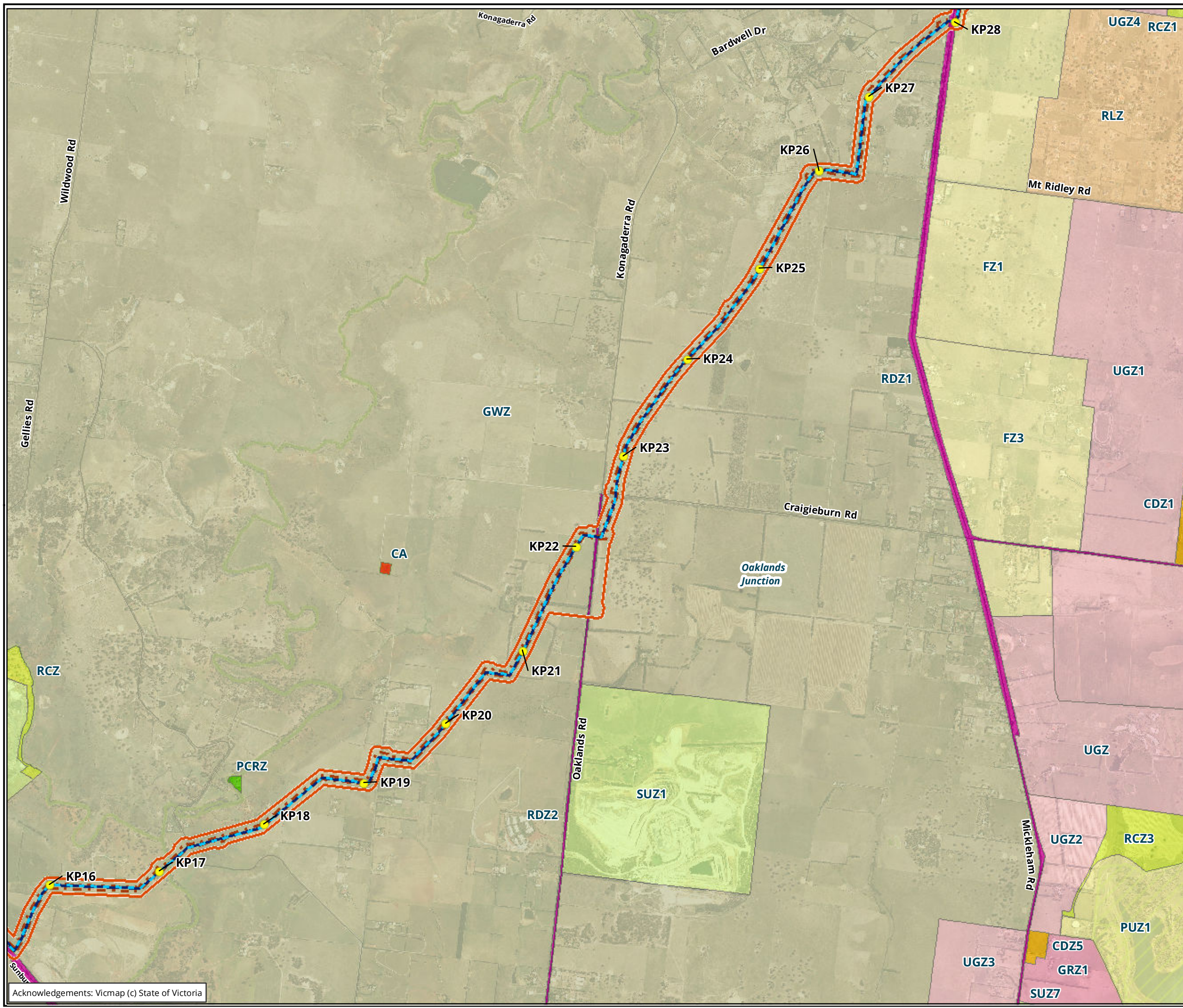
- Legend**
- Study area
  - + Kilometre Point
  - Preliminary Pipeline Alignment
  - Construction footprint
  - Local government area
- Planning Zone**
- CZ Commercial 1 or 2 Zone (C1Z, C2Z)
  - CA Commonwealth Land Not Controlled
  - CDZ Comprehensive Development Zone
  - GRZ General Residential
  - GWAZ Green Wedge A Zone
  - GWZ Green Wedge Zone
  - IN3Z Industrial 3 Zone
  - MUZ Mixed Use Zone
  - NRZ Neighbourhood Residential Zone
  - PCRZ Public Conservation and Resource Zone
  - PPRZ Public Park and Recreation Zone
  - PUZ Public Use Zone
  - RCZ Rural Conservation
  - RDZ Road
  - SUZ Special Use Zone
  - TZ Township
  - UFZ Urban Floodway
  - UGZ Urban Growth

**Figure 2.2 Planning zones**



Acknowledgements: Vicmap (c) State of Victoria

Matter: 29801,  
 Date: 11 April 2019,  
 Checked by: MD, Drawn by: DK, Last edited by: dkazemi  
 Location: \\bio-data-01\matters\29800s\29801\mapping\29801\_F2\_Planning\_Zones



**Legend**

- Study area
- + Kilometre Point
- Preliminary Pipeline Alignment
- Construction footprint

**Planning Zone**

- CA Commonwealth Land Not Controlled
- CDZ Comprehensive Development Zone
- FZ Farming Zone
- GRZ General Residential
- GWZ Green Wedge Zone
- PCRZ Public Conservation and Resource Zone
- PUZ Public Use Zone
- RCZ Rural Conservation
- RDZ Road
- RLZ Rural Living Zone
- SUZ Special Use Zone
- UGZ Urban Growth

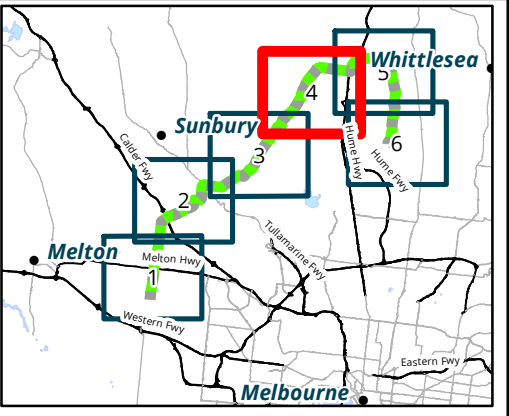
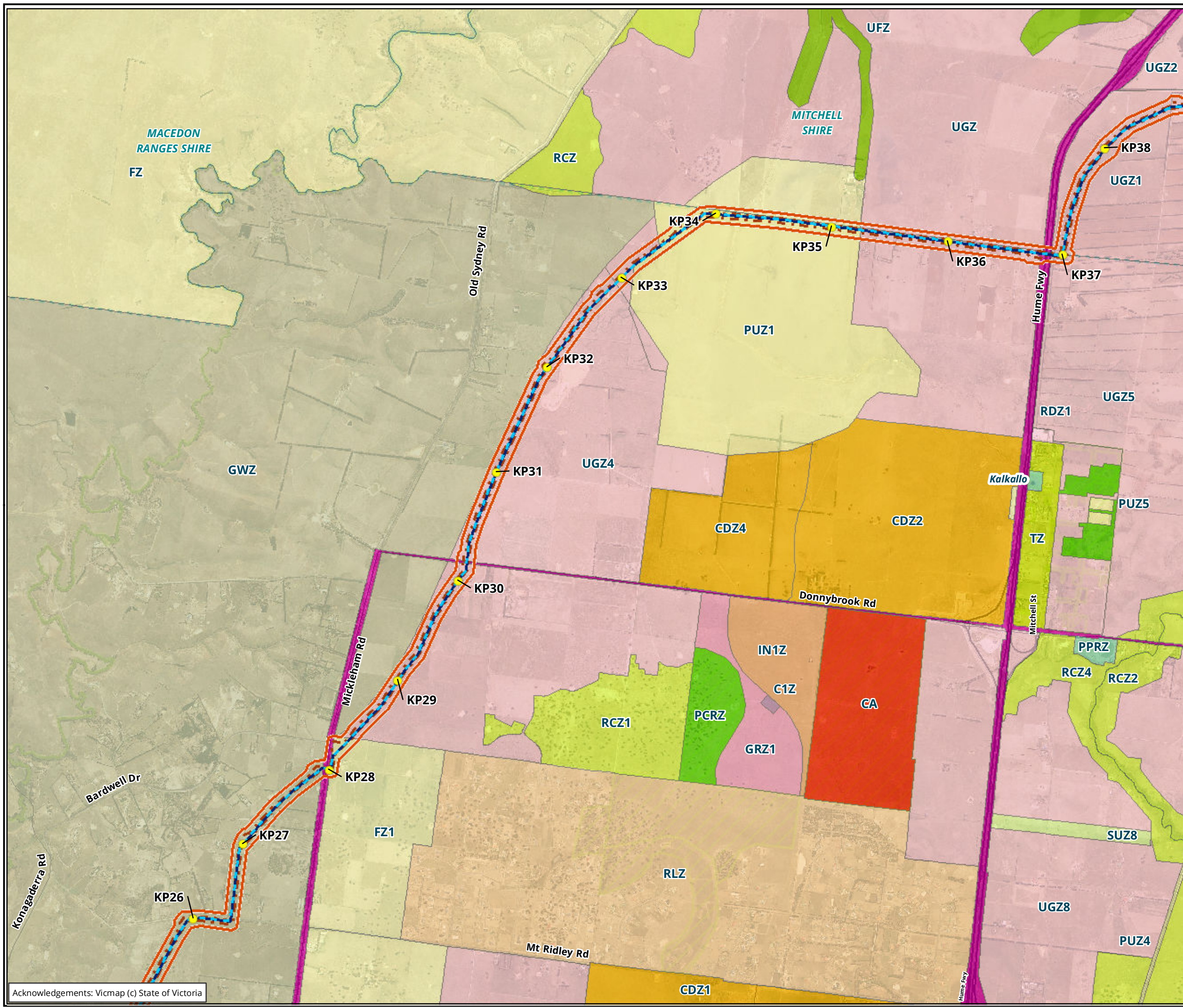
**Figure 2.3 Planning zones**

0 0.3 0.6 0.9 1.2 1.5  
 Kilometers  
 Scale: 1:30,000 @ A3  
 Coordinate System: GDA 1994 MGA Zone 55

Biosis Pty Ltd  
 Albury, Ballarat, Melbourne,  
 Newcastle, Sydney, Wangaratta & Wollongong

Acknowledgements: Vicmap (c) State of Victoria

Matter: 29801,  
 Date: 11 April 2019,  
 Checked by: MD, Drawn by: DK, Last edited by: dkazemi  
 Location: \\bio-data-01\matters\29800s\29801\mapping\29801\_F2\_Planning\_Zones



**Legend**

- Study area
- + Kilometre Point
- Preliminary Pipeline Alignment
- Construction footprint
- Local government area

**Planning Zone**

- CZ Commercial 1 or 2 Zone (C1Z, C2Z)
- CA Commonwealth Land Not Controlled
- CDZ Comprehensive Development Zone
- FZ Farming Zone
- GRZ General Residential
- GWZ Green Wedge Zone
- IN1Z Industrial 1 Zone
- PCRZ Public Conservation and Resource Zone
- PPRZ Public Park and Recreation Zone
- PUZ Public Use Zone
- RCZ Rural Conservation
- RDZ Road
- RLZ Rural Living Zone
- SUZ Special Use Zone
- TZ Township
- UFZ Urban Floodway
- UGZ Urban Growth

**Figure 2.4 Planning zones**

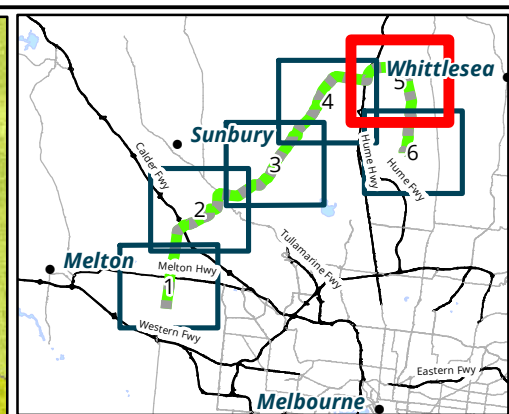
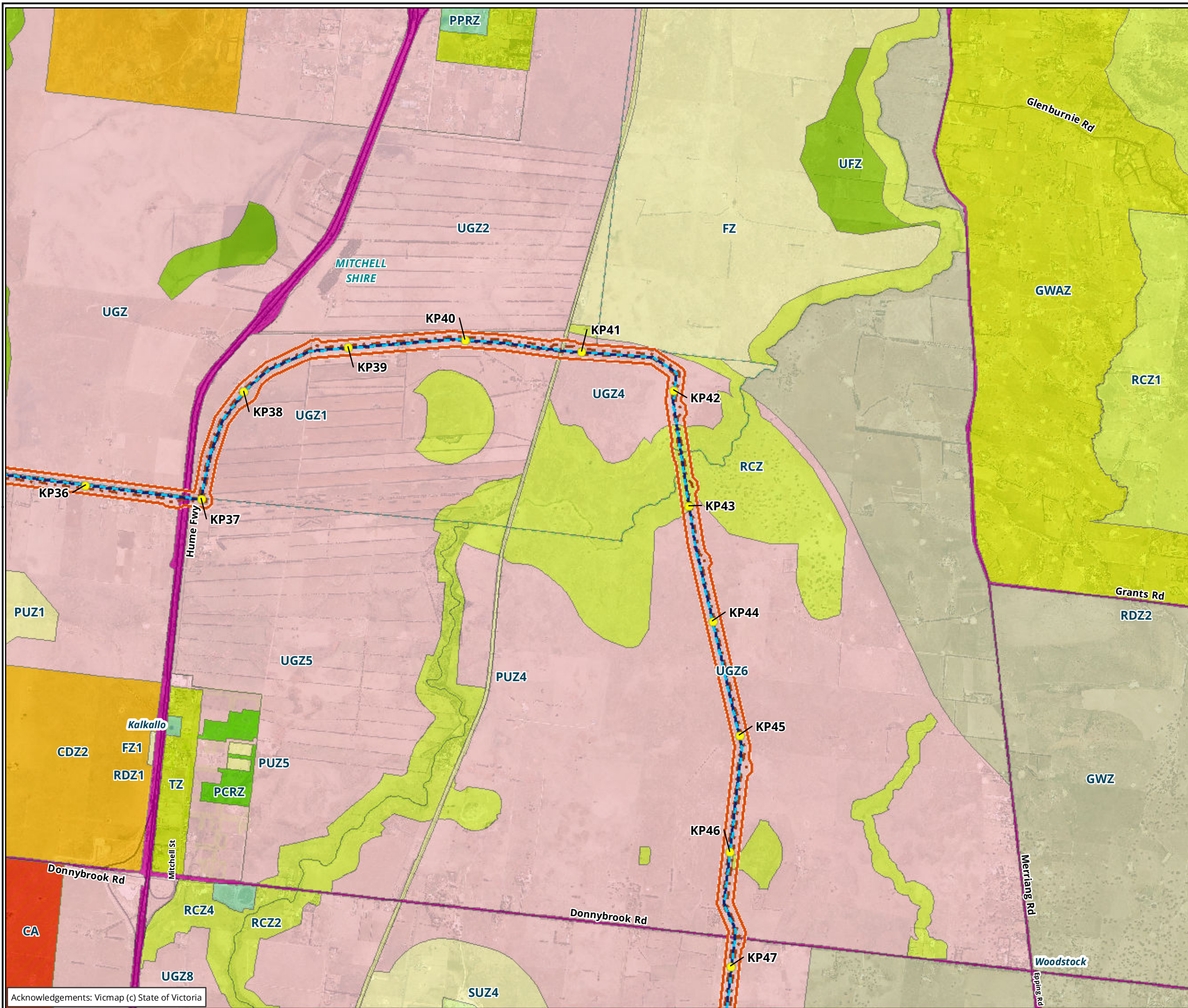


Scale: 1:30,000 @ A3  
 Coordinate System: GDA 1994 MGA Zone 55

**biosis**  
 Biosis Pty Ltd  
 Albury, Ballarat, Melbourne,  
 Newcastle, Sydney, Wangaratta & Wollongong

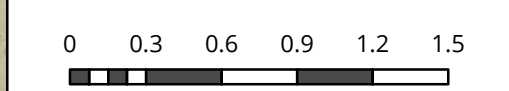
Matter: 29801,  
 Date: 11 April 2019,  
 Checked by: MD, Drawn by: DK, Last edited by: dkazemi  
 Location: \\bio-data-01\matters\29800s\29801\mapping\29801\_F2\_Planning\_Zones

Acknowledgements: Vicmap (c) State of Victoria



- Legend**
- Study area
  - + Kilometre Point
  - Preliminary Pipeline Alignment
  - Construction footprint
  - Local government area
- Planning Zone**
- CA Commonwealth Land Not Controlled
  - CDZ Comprehensive Development Zone
  - FZ Farming Zone
  - GWAZ Green Wedge A Zone
  - GWZ Green Wedge Zone
  - PCRZ Public Conservation and Resource Zone
  - PPRZ Public Park and Recreation Zone
  - PUZ Public Use Zone
  - RCZ Rural Conservation
  - RDZ Road
  - SUZ Special Use Zone
  - TZ Township
  - UFZ Urban Floodway
  - UGZ Urban Growth

**Figure 2.5 Planning zones**

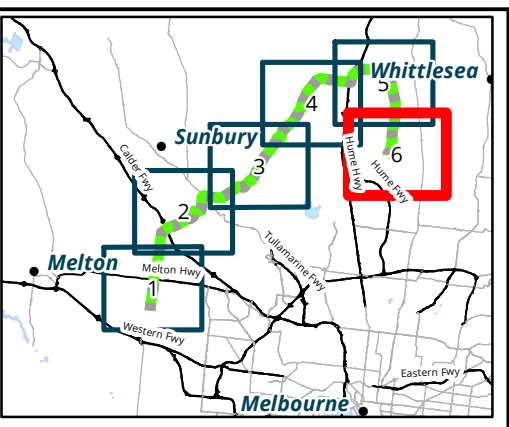
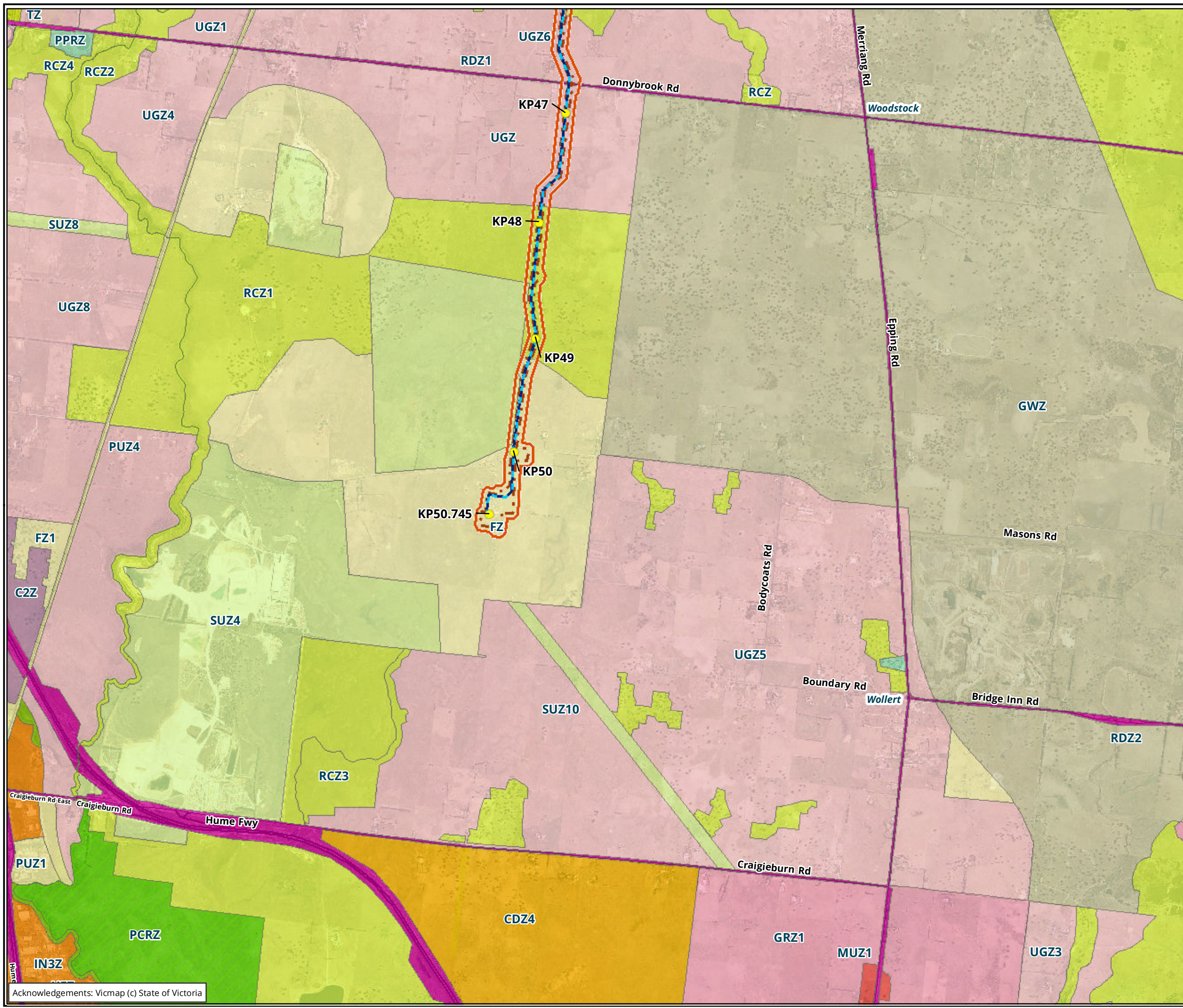


Scale: 1:30,000 @ A3  
 Coordinate System: GDA 1994 MGA Zone 55

**biosis**  
 Biosis Pty Ltd  
 Albury, Ballarat, Melbourne,  
 Newcastle, Sydney, Wangaratta & Wollongong

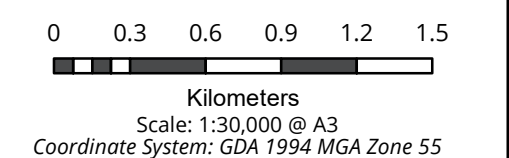
Matter: 29801,  
 Date: 11 April 2019,  
 Checked by: MD, Drawn by: DK, Last edited by: dkazemi  
 Location: \\bio-data-01\matters\29800s\29801\mapping\29801\_F2\_Planning\_Zones

Acknowledgements: Vicmap (c) State of Victoria



- Legend**
- Study area
  - + Kilometre Point
  - Preliminary Pipeline Alignment
  - Construction footprint
- Planning Zone**
- CZ Commercial 1 or 2 Zone (C1Z, C2Z)
  - CDZ Comprehensive Development Zone
  - FZ Farming Zone
  - GRZ General Residential
  - GWZ Green Wedge Zone
  - IN3Z Industrial 3 Zone
  - MUZ Mixed Use Zone
  - PCRZ Public Conservation and Resource Zone
  - PPRZ Public Park and Recreation Zone
  - PUZ Public Use Zone
  - RCZ Rural Conservation
  - RDZ Road
  - SUZ Special Use Zone
  - TZ Township
  - UFZ Urban Floodway
  - UGZ Urban Growth

**Figure 2.6 Planning zones**



**biosis**

Biosis Pty Ltd

Albury, Ballarat, Melbourne,  
Newcastle, Sydney, Wangaratta & Wollongong

Acknowledgements: Vicmap (c) State of Victoria

Matter: 29801,  
Date: 11 April 2019,  
Checked by: MD, Drawn by: DK, Last edited by: dkazemi  
Location: \\bio-data-01\matters\29800s\29801\mapping\29801\_F2\_Planning\_Zones