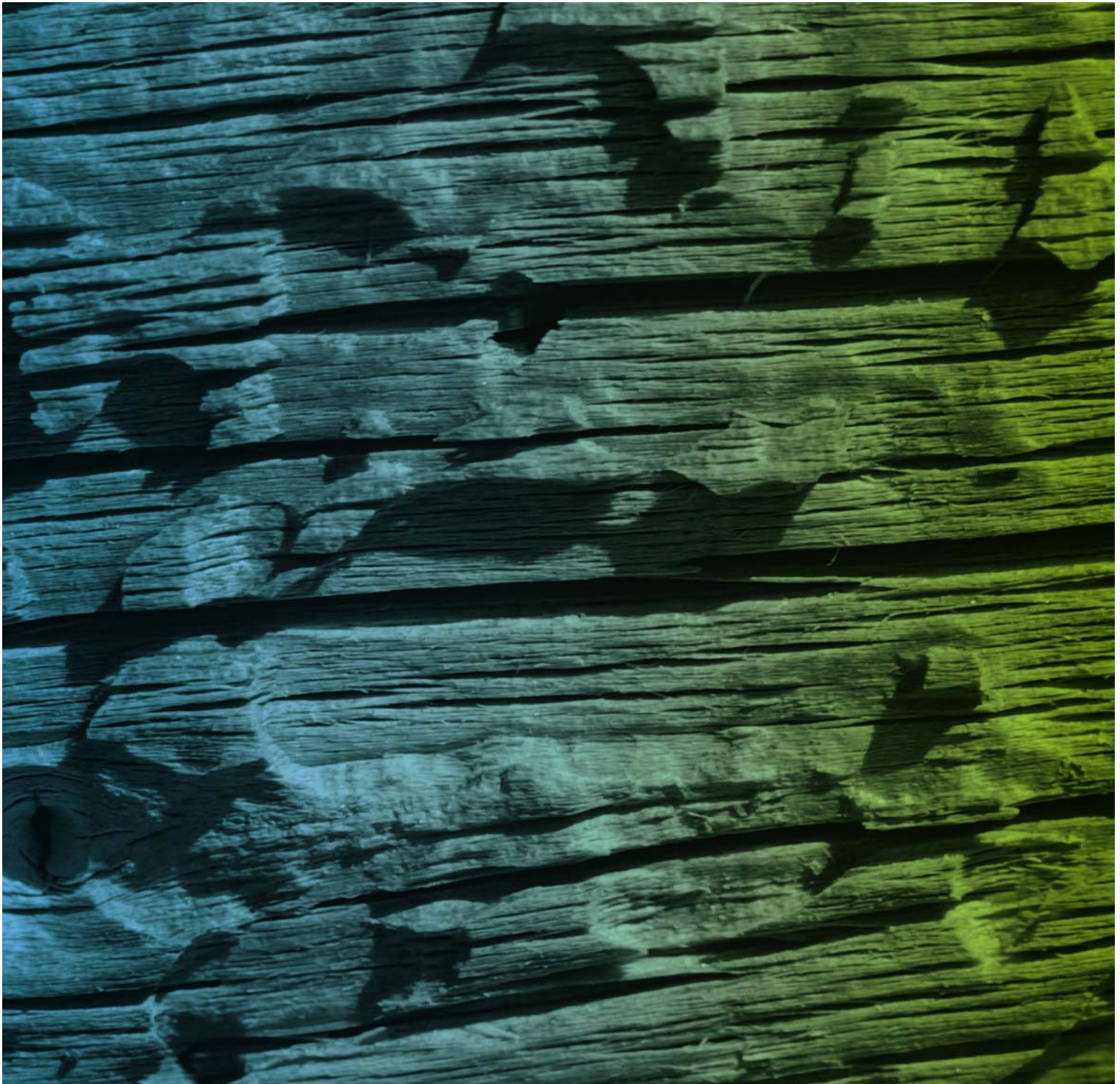


# Consultation Plan

Stockman Base Metals Mine - Environmental Effects Statement



## Consultation Plan

Stockman Base Metals Mine - Environmental Effects Statement

Prepared for

Jabiru Metals Limited

Prepared by

**AECOM Australia Pty Ltd**

Level 9, 8 Exhibition Street, Melbourne VIC 3000, Australia

T +61 3 9653 1234 F +61 3 9654 7117 [www.aecom.com](http://www.aecom.com)

ABN 20 093 846 925

10 March 2011

AECOM in Australia and New Zealand is certified to the latest version of ISO9001 and ISO14001.

© AECOM Australia Pty Ltd (AECOM). All rights reserved.

AECOM has prepared this document for the sole use of the Client and for a specific purpose, each as expressly stated in the document. No other party should rely on this document without the prior written consent of AECOM. AECOM undertakes no duty, nor accepts any responsibility, to any third party who may rely upon or use this document. This document has been prepared based on the Client's description of its requirements and AECOM's experience, having regard to assumptions that AECOM can reasonably be expected to make in accordance with sound professional principles. AECOM may also have relied upon information provided by the Client and other third parties to prepare this document, some of which may not have been verified. Subject to the above conditions, this document may be transmitted, reproduced or disseminated only in its entirety.

## Quality Information

Document      Consultation Plan

Ref              60147175

Date            10 March 2011

Prepared by    Rebecca Solomon

Reviewed by    Martin Juniper

### Revision History

Revision	Revision Date	Details	Authorised	
			Name/Position	Signature
1	22-Dec-2010	First Draft	Rebecca Solomon, Senior Consultant – Communication and Community	
2	11-Jan-2011	Review	Michael Cramer Associate Director - Environment	
3	12-Jan-2011	Review	Ian Blucher Approvals Manager Jabiru Metals Limited	
4	17-Jan-2011	Incorporate DPCD comments	Ian Blucher Approvals Manager Jabiru Metals Limited	
5	15-Feb-2011	Incorporate TRG comments	Ian Blucher Approvals Manager Jabiru Metals Limited	
6	18-Feb-2011	Document finalised with DPCD feedback.	Ian Blucher Approvals Manager Jabiru Metals Limited	
7	10-Mar-2011	Updated with DPCD comments	Ian Blucher Approvals Manager Jabiru Metals Limited	

## Table of Contents

Executive Summary		i		
1.0	Introduction	1		
	1.1	Project background	1	
	1.2	Consultation Approach	2	
	1.3	Consultation Objectives	3	
		1.3.1	Overall objectives	3
		1.3.2	Scoping and Preparing EES	3
		1.3.3	Statutory Exhibition Period	3
2.0	Stakeholders	4		
3.0	Stakeholder Issues	6		
	3.1	Maintaining and enhancing the natural environment	6	
	3.2	Contributing to the economic prosperity of the region	6	
	3.3	Operating safely	6	
	3.4	Being part of the community	6	
4.0	Methodology	7		
	4.1	Inform/Consult	7	
		4.1.1	Website	7
		4.1.2	Company office	7
		4.1.3	Newsletters	7
		4.1.4	Fact sheets	7
		4.1.5	Advertisements	7
		4.1.6	Community Events and Open Days	7
		4.1.7	Community Feedback	7
	4.2	Involve	7	
		4.2.1	Face to face meetings	7
		4.2.2	Community Reference Group	7
5.0	Consultation Program	8		
	5.1	Scoping and Preparing EES	8	
	5.2	Statutory Exhibition Period	9	
6.0	Contact Details	10		
7.0	Evaluation	10		
A1 –	Statutory Obligations	A		

## Executive Summary

This Consultation Plan demonstrates the transparent and deliberate approach of Jabiru Metals Limited (Jabiru) to effective engagement. It outlines the communication channels and activities being used to inform and consult with stakeholders in a clearly defined program.

The plan details both the statutory obligations required for consulting with the community through the Environmental Effects Statement (EES) process as well as additional activities Jabiru will be undertaking to keep stakeholders informed and to seek feedback.

Included in the Consultation Plan is a summary of identified stakeholders and a preliminary listing of stakeholder issues. Further to this initial listing, Jabiru has also developed a Community Response Register to record, monitor and take action on issues and feedback identified throughout the EES process.

This Consultation Plan provides a planned approach to consultation but also allows for flexibility throughout the EES to respond to stakeholder feedback. The document will be available on the Jabiru corporate website and at the community office that Jabiru has established in Omeo.

This Consultation Plan has also been prepared to meet the obligations outlined in the '*Ministerial guidelines for assessment of environmental effects under the Environmental Effects Act 1978*'.

In addition to and supporting this Consultation Plan which is specific to the EES process, Jabiru has developed an overarching Community Engagement Strategy that describes the ongoing framework for stakeholder relations for the life of the Stockman Base Metals Mine (Stockman Mine).

The Community Engagement Strategy provides extensive detail regarding the policy, standards, goals and extent of engagement that Jabiru has established for the project. Components of this document will be made publically available on the Jabiru Corporate Website throughout the project.

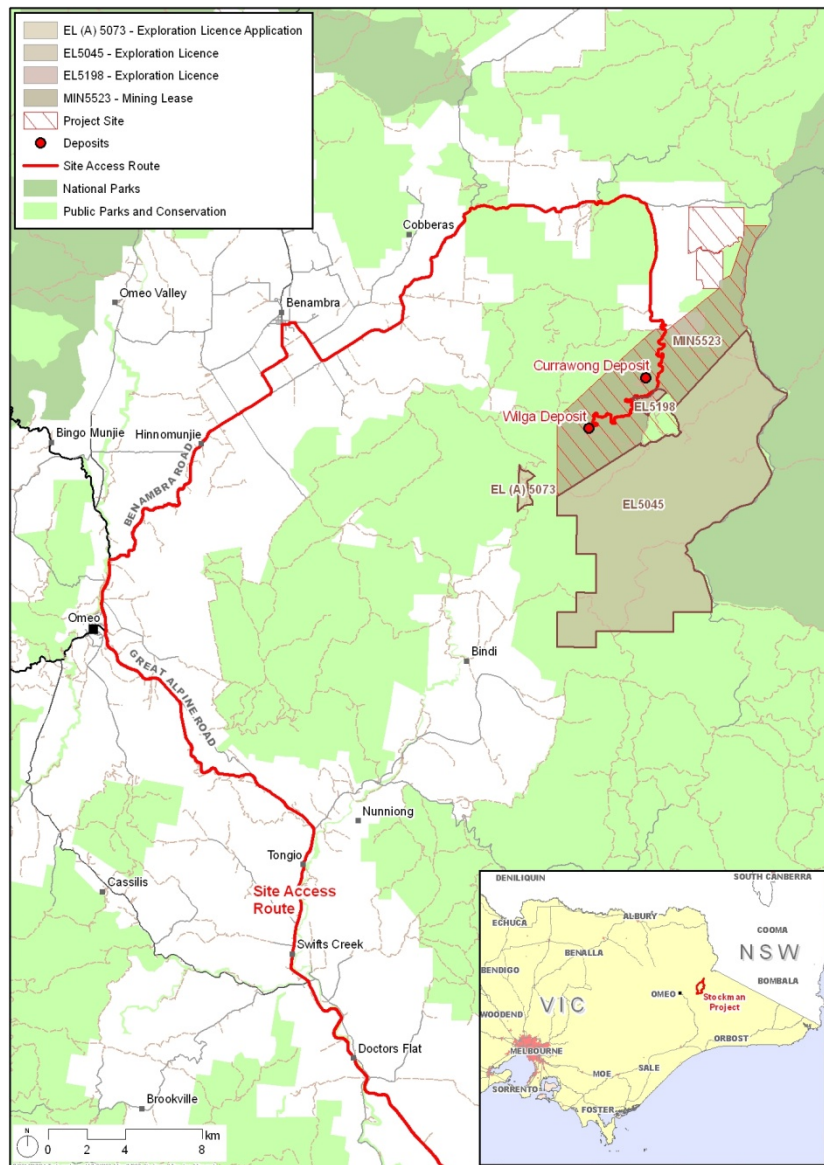
## 1.0 Introduction

### 1.1 Project background

Jabiru Metals Limited (Jabiru) is proposing to recommission the Wilga mine and establish a new mine four kilometres to the north (Currawong deposit). Both new mining operations will be underground and located in State Forest where Jabiru has tenements consisting of an existing mining licence MIN5523 and two exploration licences EL5054 and EL5198. Both deposits are copper-zinc-lead-silver-gold ‘volcanogenic massive sulphide’ (VMS) deposits which are to be treated to produce copper-sulphide and zinc sulphide rich concentrates for sale to export markets in South East Asia.

The nearest communities are located between 20 to 40 kilometres to the west and south and include the towns of Benambra, Omeo and Swifts Creek. Local industry includes farming, grazing and tourism. Potentially impacted communities also include the towns of Ensay, Bruthen and Bairnsdale which are located along or in the vicinity of the proposed trucking route.

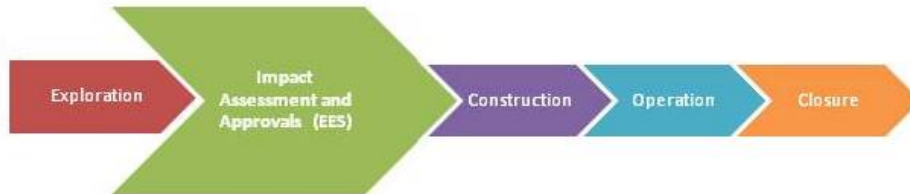
Map. 1- Tenement Location



## 1.2 Consultation Approach

Jabiru has developed a Community Engagement Strategy to guide community relations throughout the entire project life cycle. This extends beyond the EES to construction, operation and closure and has included engagement activities that were undertaken during project proposal phase. Figure 1 below highlights the current stage of the Stockman Base Metals Mine Project.

Figure 1 - Stockman Project Life Cycle



This Consultation Plan complements the overarching Community Engagement Strategy to demonstrate the consultation activities taking place during the impact assessment and approvals phase. This includes engaging and seeking feedback with the community and key stakeholders during both the scoping and preparation and the statutory exhibition period. Figure 2 below indicates key actions that form part of Jabiru’s communication and consultation approach for this phase of the project.

Figure 2 - EES Communications and Consultation Approach



## **1.3 Consultation Objectives**

The objectives of this Consultation Plan and Consultation Program are outlined below:

### **1.3.1 Overall objectives**

- Provide stakeholders with appropriate information and opportunities to encourage input into the process.
- Maintain stakeholder relationships throughout the life of the project.

### **1.3.2 Scoping and Preparing EES**

- Identify relevant stakeholders.
- Explain the planning and environmental approvals process.
- Provide opportunities for feedback and consider stakeholder views on the project proposal.
- Use feedback to develop the most appropriate project proposal and which best responds to stakeholder issues.
- Present and explain the findings of the technical investigations informing the EES.

### **1.3.3 Statutory Exhibition Period**

- Present and explain the findings of the EES.
- Explain the next steps of the project and opportunities for further consultation.



## 2.0 Stakeholders

This project has a number of key stakeholders all with varying levels of interest and influence on the project. Using the International Association for Public Participation spectrum (Figure 3), most engagement activities are planned at the inform/consult range with the local community. This approach aims to provide the public with balanced and objective information so that Jabiru can obtain public feedback on the EES findings.

Government Agencies and Regulatory Authorities and Traditional Owners and Registered Aboriginal party applicants, however, will be encouraged to be involved in the EES process. This is to help ensure their concerns and aspirations are both understood and considered in the decision making process. A Community Reference Group will also be engaged at the 'inform/consult' levels of the spectrum.

**Figure 3 – IAP2 Spectrum**



Table 1 below outlines identified stakeholders in more detail.

**Table 1 – Stakeholder Groups**

Group	Level of Engagement	Organisations/Members
Local Members, Government Ministers and Local Councillors	Inform/Consult	Tim Bull, Member for Gippsland East (State) and Darren Chester, Member for Gippsland (Federal) Relevant state and federal Ministers Local Councillors
Government agencies and regulatory authorities	Involve	<p><b>Federal Government Department</b></p> <p>Department of Sustainability, Environment, Water, Population and Community (DSEWPaC)</p> <p><b>State Government Departments</b></p> <p>Department of Primary Industries (DPI) Department of Sustainability and Environment (DSE) Environmental Protection Authority (EPA) Department of Planning and Community Development (DPCD) Regional Development Victoria (RDV) VicRoads Emergency Services</p> <p><b>Regional Authorities</b></p> <p>Southern Rural Water (SRW) Goulburn Murray Water Authority (GMWA) East Gippsland Catchment Management Authority (EGCMA) North East Catchment Management Authority (NECMA)</p> <p><b>Local Government</b></p> <p>East Gippsland Shire Council (EGSC) Alpine Shire (AS)</p>

Group	Level of Engagement	Organisations/Members
Traditional Owners and Registered Aboriginal Party applicants	Involve	Gurnai Kurnai Dhudhuroa Waywurru Nations Aboriginal Corporation Nindi-Ngujarn Ngarigo Monero Aboriginal Corporation Yaitmathang Indigenous Lands Incorporated
Local Community	Inform/Consult	<b>Located between 20km-40 km to the west and south of the project:</b> Benambra Omeo Swifts Creek Local graziers <b>Located along or in the vicinity of the proposed truck route</b> Ensay Bruthen Bairnsdale
Community and Interest Groups	Inform/Consult	Associations, environmental groups, tourism and heritage groups Omeo Region Business and Tourism Association Gippsland Environmental Group Environment East Gippsland Inc Friends of Gippsland Lakes East Gippsland Landcare Network
Regional Media	Inform	<b>Print</b> Bairnsdale Advertiser Bairnsdale East Gippsland News Kiewa Valley Observer <b>Radio</b> 3HCR High Country Radio (Omeo) Radio East Gippsland (Bairnsdale) The River 2DBR (Omeo) 3MT, ABC Gippsland
Local business and industry	Inform/Consult	Air charters Bus lines Trucking and construction contractors Other businesses
Local facilities and service providers	Inform/Consult	Hospitals, schools, education and employment providers.

## 3.0 Stakeholder Issues

The scoping and preparation of the EES will consider a range of potential environmental, social, economic and safety impacts. The following issues have been identified through consultation activities that have already taken place, including activities undertaken before the EES process began.

### 3.1 Maintaining and enhancing the natural environment

Consultation with the community and key stakeholders has highlighted that the natural environment (where the mine is proposed) is highly valued. Ensuring the ongoing preservation of the environment and river system and mitigating against potential pollution are important issues for the community.

The allocation and management of water resources and the maintenance of the Tambo River and Mitta Mitta River flows were also highlighted by local catchment authorities as critical in the operation of the mine. Concerns were also raised about the impact of trucks using the concentrate haulage route and the impact of noise and dust.

### 3.2 Contributing to the economic prosperity of the region

Consultation has highlighted that stakeholders do see considerable economic benefit in having the mine located nearby their communities. These benefits include generating local employment and reversing a current decline in population and local services. Maintaining the productive value of land was also highlighted as an issue.

### 3.3 Operating safely

Managing infrastructure and the interaction of project related vehicles with other road users, complying with safety regulations and monitoring traffic and other pollution were all raised as important operational activities.

### 3.4 Being part of the community

Stakeholder feedback also indicated that bringing employment into the town will have a significant impact because of the small populations of Omeo and Benambra. Overall the community sentiment has highlighted that the project should have a benefit to the community. Enhancing lifestyle opportunities and integrating with the local population were identified as important to the operation of the mine.

## 4.0 Methodology

### 4.1 Inform/Consult

#### 4.1.1 Website

Information regarding the Stockman Mine will be regularly updated on Jabiru's corporate website ([www.jabirumetals.com.au](http://www.jabirumetals.com.au)) and contact details for project representatives will be listed prominently to promote feedback from relevant stakeholders and the community.

#### 4.1.2 Company office

Jabiru has established an office in Omeo for local operations and it is open during business hours to respond to general enquiries directly and to provide access to the latest project information which is on display in the reception area.

#### 4.1.3 Newsletters

Newsletters are distributed throughout Omeo, Benambra and Swifts Creek to provide updates on the EES process and promote consultation opportunities. The updates will also be uploaded onto the project web page.

#### 4.1.4 Fact sheets

Fact sheets will be developed to explain the project and the opportunities available for public participation throughout the EES process.

#### 4.1.5 Advertisements

Where appropriate, information will be placed in local papers to promote consultation activities including the statutory public exhibition period.

#### 4.1.6 Community Events and Open Days

Project staff will seek opportunities to host manned public displays at local community events to provide up-to-date information on the project and seek feedback.

#### 4.1.7 Community Feedback

Contact and feedback from community members and other stakeholders will be recorded on a Community Response Register and shared among the project team to ensure that community issues are considered and responded to. This feedback will also be used to review this strategy on a regular basis to update as necessary to help ensure an appropriate and meaningful program of consultation is delivered.

### 4.2 Involve

#### 4.2.1 Face to face meetings

Face to face meetings will be conducted with relevant stakeholders to inform them of the project as well as to invite feedback and involve them, as appropriate, in project decision making.

#### 4.2.2 Community Reference Group

A Community Reference Group (CRG) has been established to help gain coordinated feedback on local issues. The CRG was initiated by Jabiru to seek more detailed input into community issues from a local perspective.

A Terms of Reference has been developed for the CRG which clearly outlines roles and responsibilities. The CRG is not a decision making group, its primary role is to provide advice and recommendations to Jabiru.

The CRG is made up of a facilitator, two Jabiru representatives and a selection of community representatives who individually and collectively represent a wide range of opinions and experience.

The CRG will become a vehicle for sensing community issues and disseminating project information to a wider public.

## 5.0 Consultation Program

### 5.1 Scoping and Preparing EES

Table 2 below outlines the program of activities Jabiru will be undertaking to inform and consult project stakeholders on the EES.

**Table 2 – EES preparation consultation program**

Action	Description/Purpose	Stakeholder groups	Target date
Scoping Requirements Public Exhibition Period.	Jabiru will promote DPCD's public exhibition period outlining the scoping requirements for the EES process.	All	COMPLETED
Community Reference Group (CRG) establishment	Terms of reference, invites send out and group established.	Local community members.	COMPLETED
Meetings with Elected Officials	Face to face meetings with Local, State and Federal Members.	Local State and Federal MPs.	Ongoing
Website	Provide information about the Stockman Mine proposal and contact information.	All.	Ongoing
Newsletter	Project newsletter providing update on EES process.	All.	Completed
Omeo show	Booth at Omeo Show explaining the proposal.	Omeo and district residents.	2010 and 2011
Tambo Valley Races	Booth at Tambo Valley Races explaining the proposal	Swifts Creek and district community.	2011
Open day	Open day at Benambra Core Shed to explain the proposal.	Benambra and district residents.	COMPLETED
Project fact sheets	Develop project fact sheets that explain the project proposal and timeframes.	All.	Early 2011
CRG administration	Regular meeting to seek advice from community members on relevant issues.	CRG members.	Ongoing (quarterly meetings)
Face to face meetings	Meet with relevant stakeholders to inform on project milestones and provide opportunities for feedback.	Local service providers, local business and industry, community and industry groups.  Government agencies and regulatory authorities.  Local politicians.	Ongoing
Jabiru Omeo Office	Provide details of opening hours and when established.	Local communities.	Ongoing

Action	Description/Purpose	Stakeholder groups	Target date
Community events and open days	Continue to seek opportunities to participate in local events to keep the local townships informed and provide opportunities for feedback.	Local communities.	Ongoing
Advertising	Advertise in local newspapers on project milestones and participation in community events.	Local communities.	Ongoing
Community feedback	Service standards have been developed to monitor, track and respond to stakeholder and community feedback including establishing acceptable timeframes for responses.	All.	Ongoing

## 5.2 Statutory Exhibition Period

The following program (Table 3) has been developed to encourage stakeholder participation in the public exhibition period of the EES, including the opportunity to provide written submissions. It includes activities required to meet statutory obligations (see Attachment 1) as stated *Ministerial guidelines for assessment of environmental effects under the Environmental Effects Act 1978*.

**Table 3 – Statutory Exhibition consultation program**

Action	Description/Purpose	Stakeholder groups	Target date
Summary document	Prepare summary document of the EES and make available on Jabiru corporate website and at the Jabiru Omeo office.	All	TBC
Open days	Open days held at Benambra and Omeo to explain the draft EES and explain how people can provide comment.	Local communities.	TBC
Newsletter	Content will be added to the project newsletter explaining the project milestone and inviting public submissions.  A newsletter will also be prepared announcing public exhibition period and opportunities to comment.	Local communities.	TBC
Public notice	Take out a public notice in local and state newspapers advising of public exhibition period.	All	TBC
EES document	Upload on Jabiru website and provide contact details for submissions. CDs will be available for a small fee.	All	TBC

## 6.0 Contact Details

To encourage feedback and promote a dialogue with stakeholders, all project communications will include a contact phone number, the address of the community hub, an email address and the Jabiru corporate website.

### Jabiru Metals Limited Stockman Base Metals Mine Project Office

2 Sebastopol Hill Road

Omeo 3858

Opening hours: Monday – Friday, 9am – 4pm

Phone: 03 5159 1300

Email: [info@jabirumetals.com.au](mailto:info@jabirumetals.com.au)

Website: [www.jabirumetals.com.au/discovery/stockman-project.html](http://www.jabirumetals.com.au/discovery/stockman-project.html)

## 7.0 Evaluation

Consultation Plan evaluation		
Objective	Community Engagement Measurement	Outcome
Develop a methodology for engaging with the local community.	Methodology developed and accepted by DPCD.	DPCD, Jabiru Metals Limited and the Technical Reference Group (TRG) have a clear understanding and endorse the consultation approach.
Identify key stakeholders and issues	Stakeholder list and preliminary issues identification completed and accepted by DPCD.	Relationships are developed with representatives from key stakeholder groups.
Implement activities outlined in Consultation Program.	Consultation Plan updated throughout EES process to indicate completion of prescribed actions.	Program implemented.
Consultation will inform EES	EES will describe the strategy and reporting mechanisms or issues raised and responses.	Responses from consultation inform ongoing operations.

## A1 – Statutory Obligations

The first required public exhibition period is for the scoping requirements of the EES. This will take place prior to the EES being prepared. Jabiru will promote this exhibition period through various communication channels.

The 'Ministerial guidelines for assessment of environmental effects under the Environmental Effects Act 1978' outline a specific process for promoting and facilitating the public exhibition period of the draft EES.

Figure 4 highlights the communication activities Jabiru will be undertaking during to promote public feedback on the draft EES while also meeting its statutory obligations.

**Figure 4 - Public Exhibition Process**

