

Melbourne Urban Vegetation Cover 2018 Inner Region



Environment,
Land, Water
and Planning



Date: 16/4/2019

Project: Metropolitan monitoring and analysis of vegetation cover, heat and land use

Client: Department of Environment, Land, Water and Planning, Victorian Government

Report: Melbourne Urban Vegetation Cover 2018, Inner Region

Project Team:

Associate Professor Joe Hurley, RMIT University

Mr Alex Saunders, University of Western Australia

Associate Professor Marco Amati, RMIT University

Dr Bryan Boruff, University of Western Australia

Dr Alan Both, RMIT University

Dr Chayn Sun, RMIT University

Dr Peter Caccetta, CSIRO Data 61

Dr John Duncan, University of Western Australia

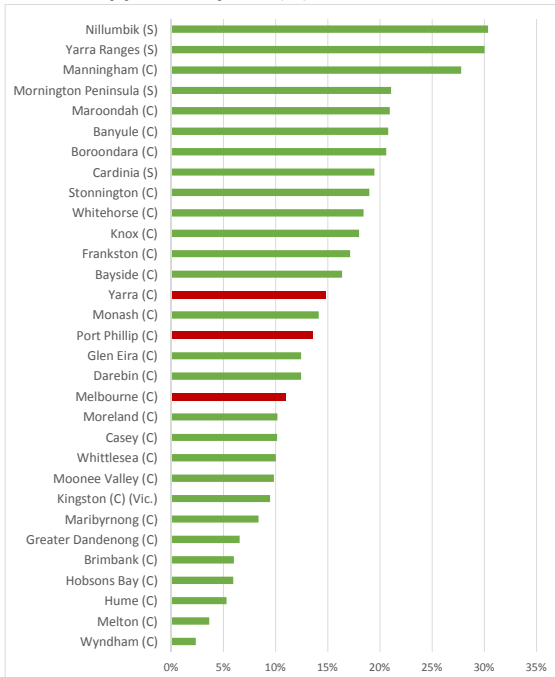
Reference: Hurley, J., Saunders, A., Amati, M., Boruff, B., Both, A., Sun, C., Caccetta, P., and Duncan, J. (2019) *Melbourne Vegetation Cover 2018, Inner Region*, Department of Environment, Land, Water and Planning, Melbourne, Australia.



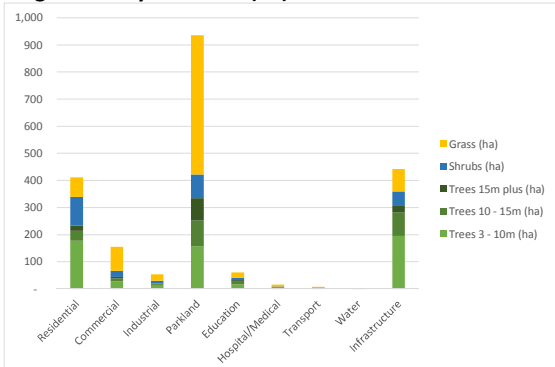
Vegetation Cover and Tree Canopy (2018)

Inner Region - Urban and Non-urban Areas

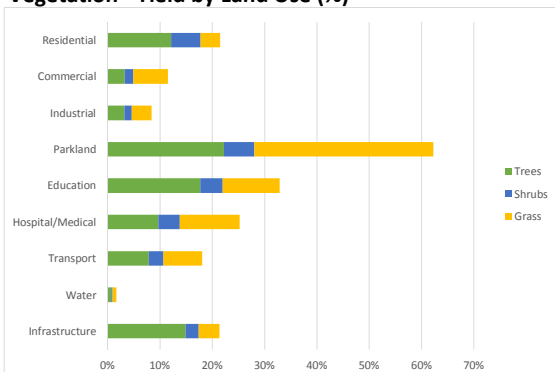
Tree Canopy Cover by LGA (%)



Vegetation by Land Use (ha)



Vegetation - Yield by Land Use (%)



Notes:

- Analysis based on the 2018 data capture (limited to features where data coverage is greater than 90%).
- Mesh Blocks classified as "other" are representative of land uses which could not be easily placed in one of the other nine categories due to the nature of the land use, or due to evidence of high mixed use.
- The inner and Inner South East Regions have no non-urban areas.

Melbourne Metropolitan Region

Vegetation and Tree Canopy (2018)

Highlights

High percentage of tree canopy on linear infrastructure (31.5% compared with 10.0% for the whole metropolitan region).

High percentage of total vegetation on linear infrastructure (21.2% compared with 7.0% for the whole metropolitan region).

High percentage of total vegetation on parkland (45.0% compared with 16.0% for the whole metropolitan region).

High percentage of total vegetation on residential and parkland collectively (64.8% compared with 33.4% for the whole metropolitan region).

Low total vegetation yield on industrial land (8.4% compared with 28.0% for the whole metropolitan region).

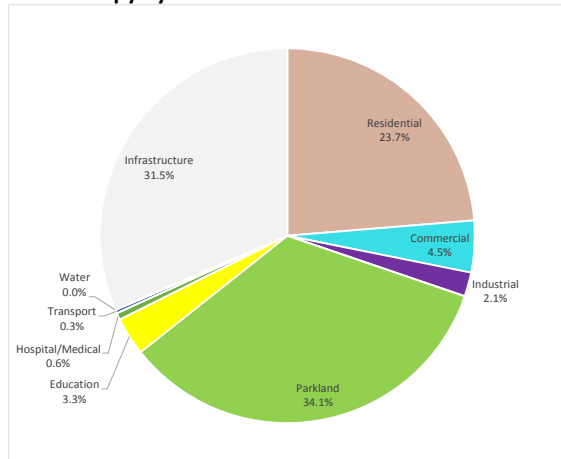
High percentage of tree canopy on parkland (34.1% compared with 20.1% for the whole metropolitan region).

Low total vegetation yield on commercial land (11.6% compared with 22.3% for the whole metropolitan region).

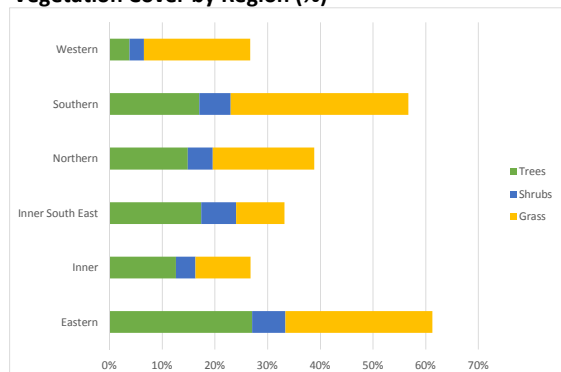
Low total vegetation yield on residential land (21.5% compared with 40.0% for the whole metropolitan region).

Low total vegetation yield (26.8% compared with 47.2% for the whole metropolitan region).

Tree Canopy by Land Use



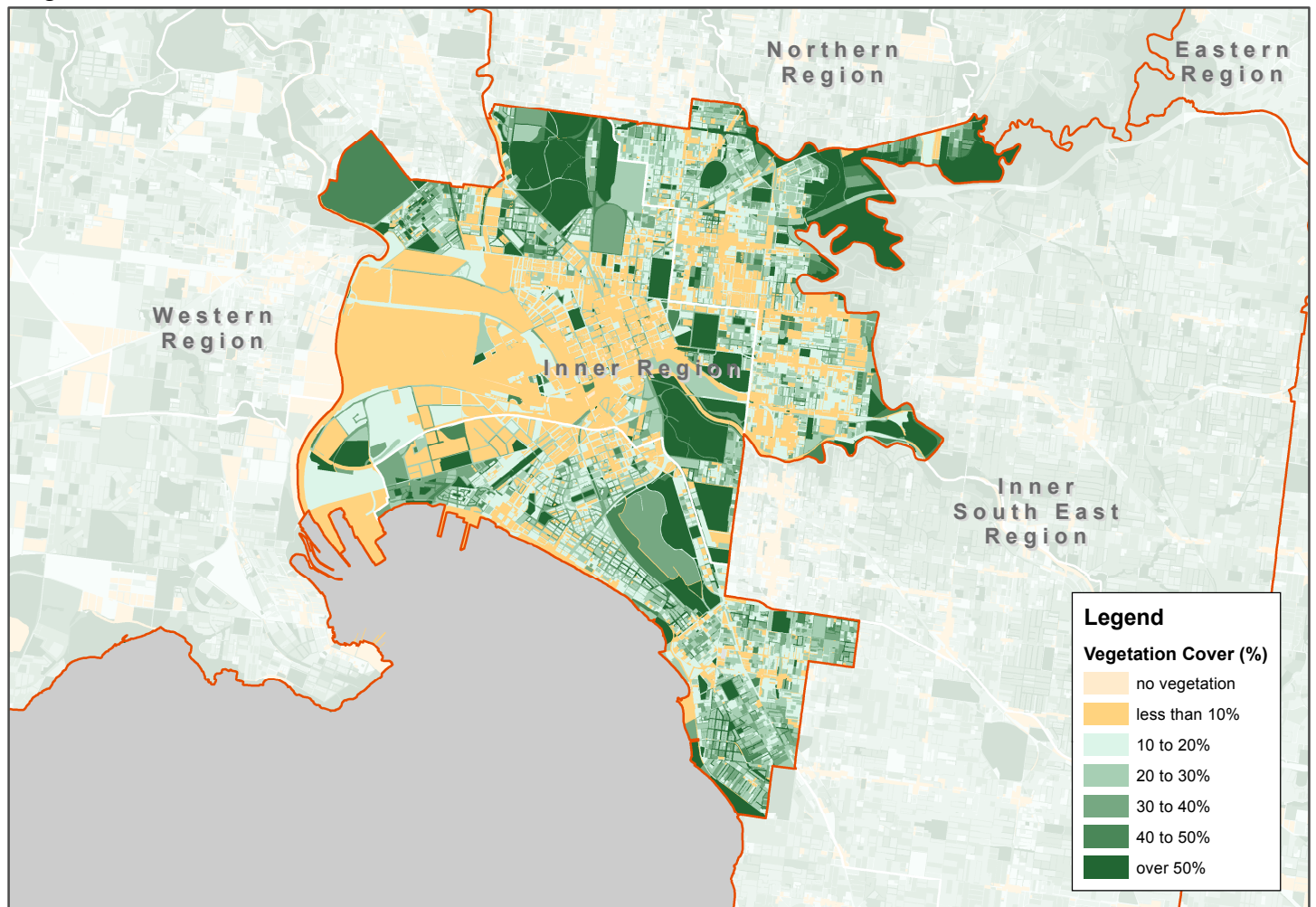
Vegetation Cover by Region (%)



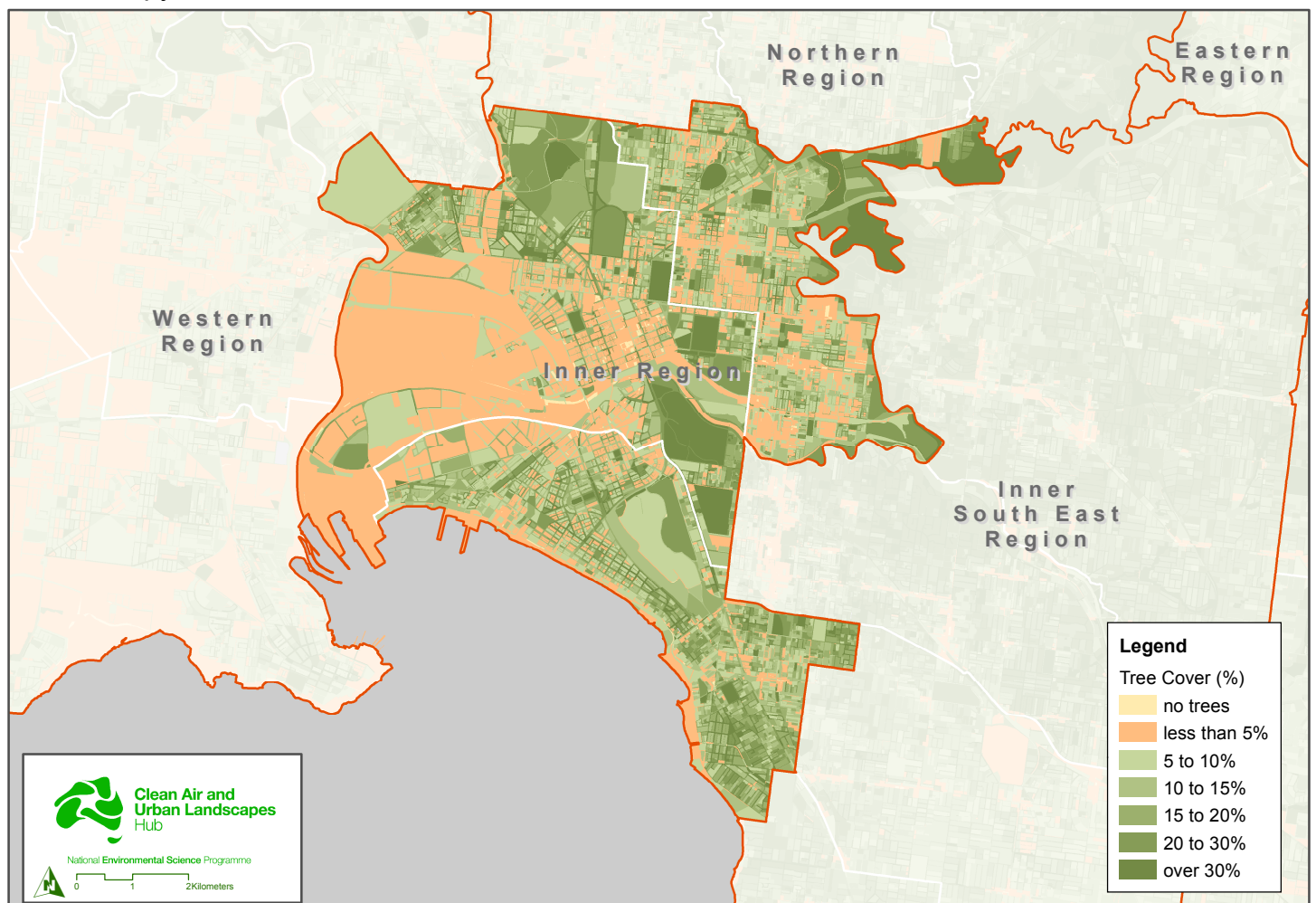
Inner Region

Vegetation Cover and Tree Canopy

Vegetation Cover - Modified Mesh Block



Tree Canopy - Modified Mesh Block



Inner Region - Data Tables

Land Use and Vegetation - Urban areas

Vegetation Area (ha)

Land Use	Grass (ha)	Shrubs (ha)	Trees 3 to 10m (ha)	Trees 10 to 15m (ha)	Trees 15m plus (ha)	Total Trees (ha)	Total Vegetation (ha)	Total Land Area within Study (ha)
Residential	71	107	177	37	18	232	411	1,908
Commercial	88	22	27	10	6	44	154	1,334
Industrial	24	9	14	5	2	20	53	633
Parkland	514	87	157	95	83	334	935	1,502
Education	20	8	17	9	6	32	60	183
Hospital/Medical	7	2	4	1	1	6	15	59
Transport	3	1	2	1	0	3	7	38
Water	0	0	0	0	0	0	1	40
Infrastructure	82	51	194	86	28	308	441	2,064
Total	809	287	592	245	145	981	2,077	7,761

Vegetation Cover (%)

Land Use	Grass (%)	Shrubs (%)	Trees 3 to 10m (%)	Trees 10 to 15m (%)	Trees 15m plus (%)	Total Trees (%)	Total Vegetation (%)
Residential	3.7%	5.6%	9.3%	1.9%	1.0%	12.2%	21.5%
Commercial	6.6%	1.7%	2.0%	0.8%	0.5%	3.3%	11.6%
Industrial	3.8%	1.4%	2.2%	0.7%	0.3%	3.2%	8.4%
Parkland	34.2%	5.8%	10.4%	6.3%	5.5%	22.2%	62.2%
Education	10.8%	4.3%	9.2%	5.0%	3.5%	17.8%	32.9%
Hospital/Medical	11.4%	4.1%	6.0%	2.3%	1.5%	9.7%	25.3%
Transport	7.3%	2.9%	5.2%	2.1%	0.6%	7.9%	18.1%
Water	0.8%	0.2%	0.5%	0.1%	0.1%	0.7%	1.7%
Infrastructure	4.0%	2.5%	9.4%	4.2%	1.4%	14.9%	21.4%
Total	10.4%	3.7%	7.6%	3.2%	1.9%	12.6%	26.8%

* Data tables on this page based on the 2018 data capture (limited to features where data coverage is greater than 90%). The inner and Inner South East Regions have no non-urban areas.

Inner Region - Data Tables

Urban and Non-urban Areas

Tree Canopy Cover by Local Government

Local Government	Region	Trees 3 to 10m (ha)	Trees 10 to 15m (ha)	Trees 15m plus (ha)	Total Trees (ha)	Trees 3 to 10m (%)	Trees 10 to 15m (%)	Trees 15m plus (%)	Total Trees (%)
Nillumbik (S)	Northern	6,173	4,072	2,860	13,105	14.3%	9.4%	6.6%	30.4%
Yarra Ranges (S)	Eastern	10,747	6,072	13,448	30,267	10.7%	6.0%	13.4%	30.0%
Manningham (C)	Eastern	1,493	914	744	3,151	13.2%	8.1%	6.6%	27.8%
Mornington Peninsula (S)	Southern	8,664	3,539	3,073	15,276	12.0%	4.9%	4.2%	21.1%
Maroondah (C)	Eastern	703	331	252	1,287	11.5%	5.4%	4.1%	20.9%
Banyule (C)	Northern	740	324	236	1,300	11.8%	5.2%	3.8%	20.8%
Boroondara (C)	Inner South East	851	262	127	1,241	14.1%	4.4%	2.1%	20.6%
Cardinia (S)	Southern	5,959	3,577	6,420	15,956	7.3%	4.4%	7.8%	19.5%
Stonnington (C)	Inner South East	348	102	37	488	13.6%	4.0%	1.5%	19.0%
Whitehorse (C)	Eastern	777	261	147	1,185	12.1%	4.1%	2.3%	18.4%
Knox (C)	Eastern	1,111	482	460	2,053	9.8%	4.2%	4.0%	18.0%
Frankston (C)	Southern	1,580	462	180	2,222	12.2%	3.6%	1.4%	17.2%
Bayside (C)	Inner South East	467	103	40	610	12.6%	2.8%	1.1%	16.4%
Yarra (C)	Inner	179	67	44	290	9.1%	3.4%	2.3%	14.8%
Monash (C)	Eastern	810	225	118	1,153	9.9%	2.8%	1.4%	14.2%
Port Phillip (C)	Inner	194	64	22	280	9.4%	3.1%	1.1%	13.5%
Glen Eira (C)	Inner South East	403	60	20	483	10.4%	1.5%	0.5%	12.5%
Darebin (C)	Northern	488	122	58	667	9.1%	2.3%	1.1%	12.5%
Melbourne (C)	Inner	219	113	79	411	5.9%	3.0%	2.1%	11.0%
Moreland (C)	Northern	395	89	35	519	7.8%	1.7%	0.7%	10.2%
Casey (C)	Southern	2,757	914	503	4,174	6.7%	2.2%	1.2%	10.2%
Whittlesea (C)	Northern	2,289	1,121	749	4,158	5.5%	2.7%	1.8%	10.0%
Moonee Valley (C)	Western	336	64	26	426	7.8%	1.5%	0.6%	9.9%
Kingston (C) (Vic.)	Southern	643	155	70	868	7.0%	1.7%	0.8%	9.5%
Maribyrnong (C)	Western	210	37	14	261	6.7%	1.2%	0.4%	8.4%
Greater Dandenong (C)	Southern	574	176	102	851	4.4%	1.4%	0.8%	6.6%
Brimbank (C)	Western	563	126	56	745	4.6%	1.0%	0.5%	6.0%
Hobsons Bay (C)	Western	309	57	16	383	4.8%	0.9%	0.3%	6.0%
Hume (C)	Northern	1,731	619	274	2,624	3.5%	1.3%	0.6%	5.3%
Melton (C)	Western	1,254	439	160	1,853	2.5%	0.9%	0.3%	3.7%
Wyndham (C)	Western	839	207	95	1,141	1.7%	0.4%	0.2%	2.4%
Total	-	53,808	25,155	30,465	109,427	8.0%	3.7%	4.5%	16.2%

* Data tables on this page based on the 2018 data capture (limited to features where data coverage is greater than 90%), combining both urban and non-urban areas. The inner and Inner South East Regions have no non-urban areas.

* Partial data coverage only for some outer LGAs including - Cardinia, Melton, Whittlesea, Wyndham and Yarra Ranges.