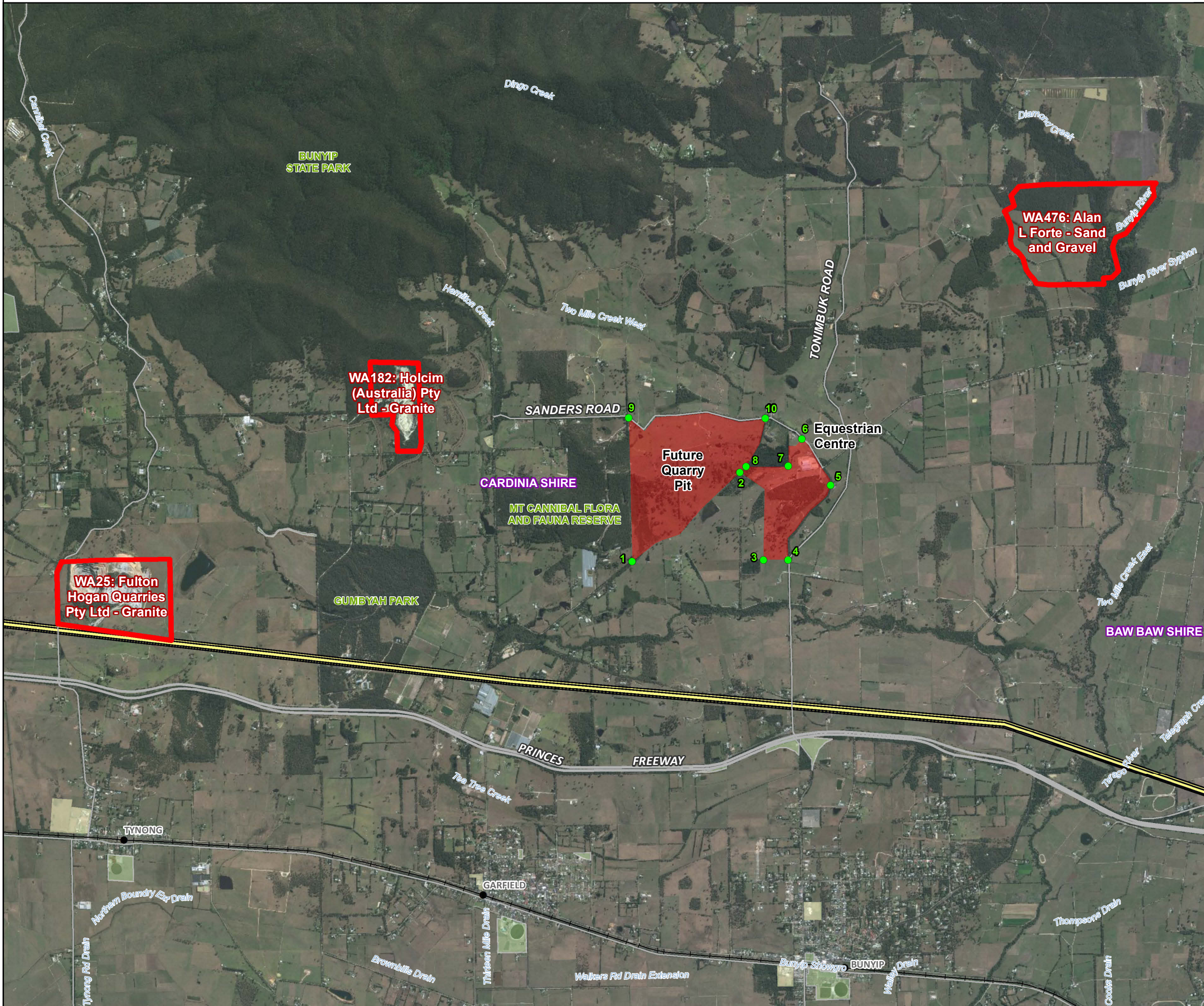


## **1. Attachment A – Regional and Site Context Figures**

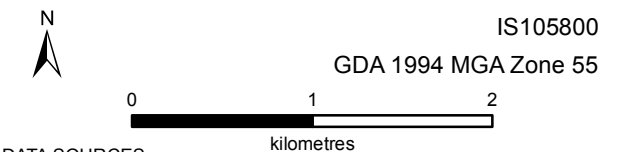




**Legend**

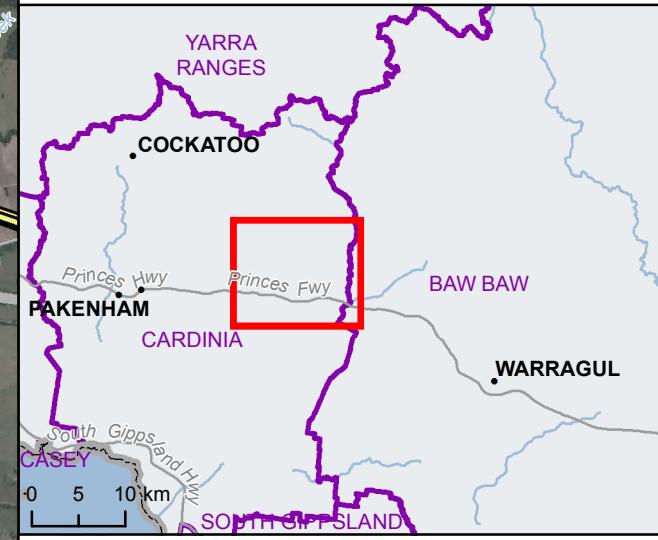
- Hanson Site
- Existing Quarry
- Transmission Line
- Major Road
- Minor Road
- Rail

Reference Points GDA94		
ID	Latitude	Longitude
1	-38.0574	145.6940
2	-38.0485	145.7080
3	-38.0575	145.7110
4	-38.0575	145.7140
5	-38.0499	145.7200
6	-38.0452	145.7160
7	-38.0480	145.7140
8	-38.0480	145.7090
9	-38.0428	145.6940
10	-38.0431	145.7120

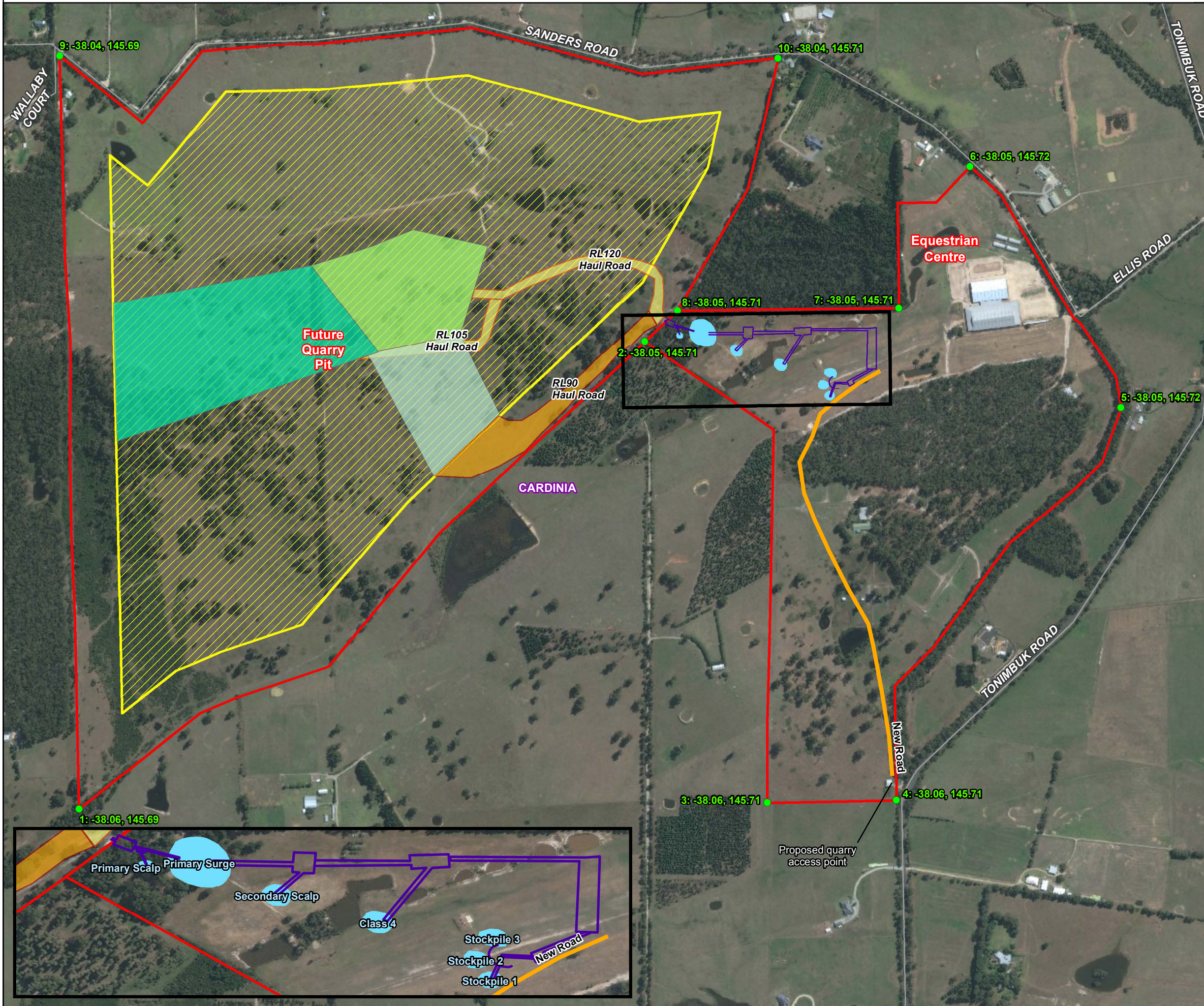


**DATA SOURCES**  
 © Commonwealth of Australia (Geoscience Australia) 2006 Geodata Topo 250k Series 3; Vicmap Data © State of Victoria, DELWP 2015  
 EWA © State of Victoria, DEDJTR 2015  
 ESRI Basemap

**COPYRIGHT:** The concepts and information contained in this document are the copyright of Jacobs. Use or copying of the document in whole or in part without the written permission of Jacobs constitutes an infringement of copyright. Jacobs does not warrant that this document is definitive nor free of error and does not accept liability for any loss caused or arising from reliance upon information provided herein.





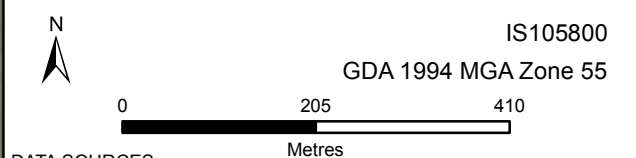


**Legend**

- Hanson Site
- Proposed Extraction Limit
- Future Areas
- Haul Roads - Stage 1
- Haul Roads - Stage 3
- Stockpiles

**Indicative Stages**

- Stage 1
- Stage 2
- Stage 3
- Processing Plant
- New Road
- Reference Points



**DATA SOURCES**  
 © Commonwealth of Australia (Geoscience Australia) 2006 Geodata Topo 250k Series 3; Vicmap Data © State of Victoria, DELWP 2015  
 EWA © State of Victoria, DEDJTR 2015  
 ESRI Basemap

**COPYRIGHT:** The concepts and information contained in this document are the copyright of Jacobs. Use or copying of the document in whole or in part without the written permission of Jacobs constitutes an infringement of copyright. Jacobs does not warrant that this document is definitive nor free of error and does not accept liability for any loss caused or arising from reliance upon information provided herein.

