



190° 200° 210° 220° SW 230° 240° 250° 260° 270° W 280° 290° 300° 310°

**Numbered turbines**



190° 200° 210° 220° SW 230° 240° 250° 260° 270° W 280° 290° 300° 310°

**Wireframe model**

**XURBAN**

Urban Design  
Landscape Architecture  
Visual Assessment

Suite 6, 60 Little Latrobe Street,  
Melbourne Victoria 3000

P: 61 3 9642 8040  
E: allan.wyatt@xurban.com.au

**Layout**

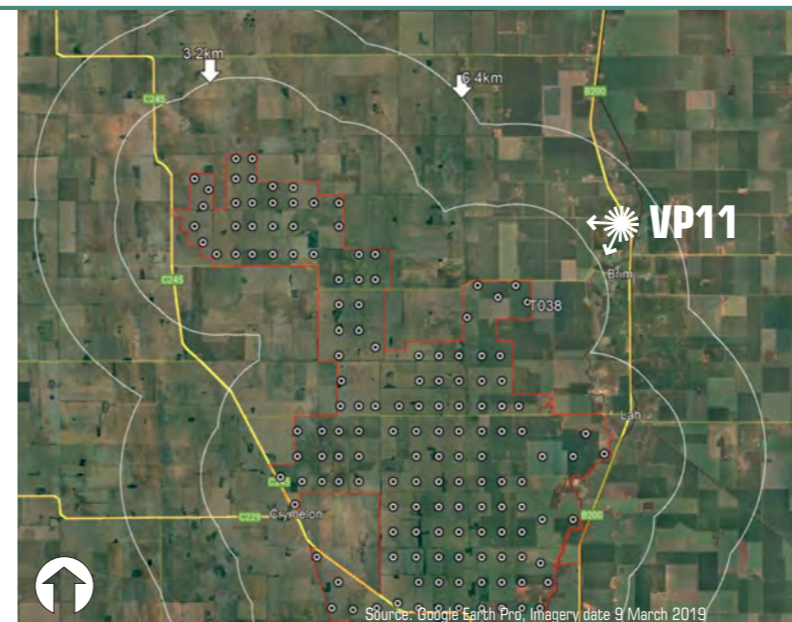
Wind turbine layout - V08-01

**Photography data**

Photography date: 12 May 2022 at 12:05 PM  
Camera: Nikon D5  
Lens: 60mm

**VP 11**

Location data reference: Grid Datum: GDA94 Zone 54  
Latitude: -36.056050°  
Longitude: 142.419650°  
Ground level: 98m  
Distance to nearest wind turbine: (T038) 5.1km  
Bearing 230° approx



Project:  
**Warracknabeal Energy Park**

Client:  
Warracknabeal Energy Park Pty Ltd

Location:  
**Henty Highway / Wardles Road  
North of Brim**

**Wireframe & numbered turbines**

Date: 19 May 2022 Project No: 15187  
Drawing: **Viewpoint 11** Sheet: **11.04**