

Legend

- Area of Investigation
- Inundation Area
- Major Road
- Minor Road
- Channel / Drain
- Watercourse Stream
- Waterbody
- Cadastre
- LGA Boundary

Geomorphology of Victoria

- Lakes and basins with lunettes (Kow Swamp, Lake Cooper, Kanyapella depression)
- Linear dunes sub-dominant (mostly south east of Big Desert, Millewa)
- Meander belt below plain level, sometimes source-bordering dunes (Mooroopna, Wangaratta)
- Plains without leveed channels (Tragowel, Pine Grove)

Additional Labels

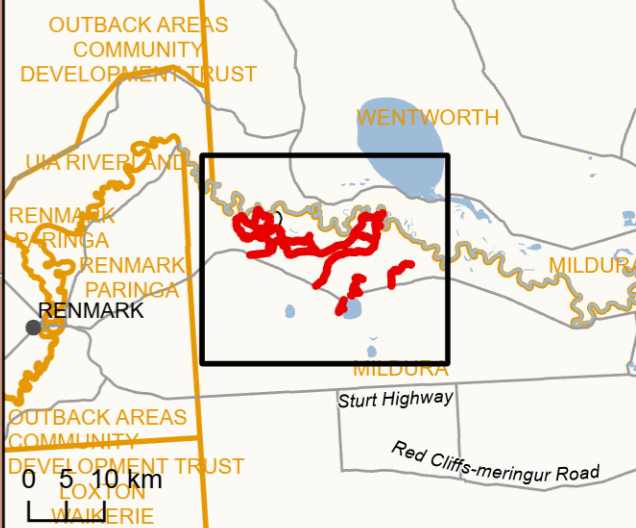
IS297705

N

0 2 4
Kilometers

DATA SOURCES
 © Commonwealth of Australia (Geoscience Australia) 2006 Geodata Topo 250k Series 3; Vicmap Data; DELWP © State of Victoria 2019-20; Jacobs & GHD 2019-20.

COPYRIGHT: The concepts and information contained in this document are the copyright of Jacobs. Use or copying of the document in whole or in part without the written permission of Jacobs constitutes an infringement of copyright. Jacobs does not warrant that this document is definitive nor free of error and does not accept liability for any loss caused or arising from reliance upon information provided herein.



0 5 10 km

R8