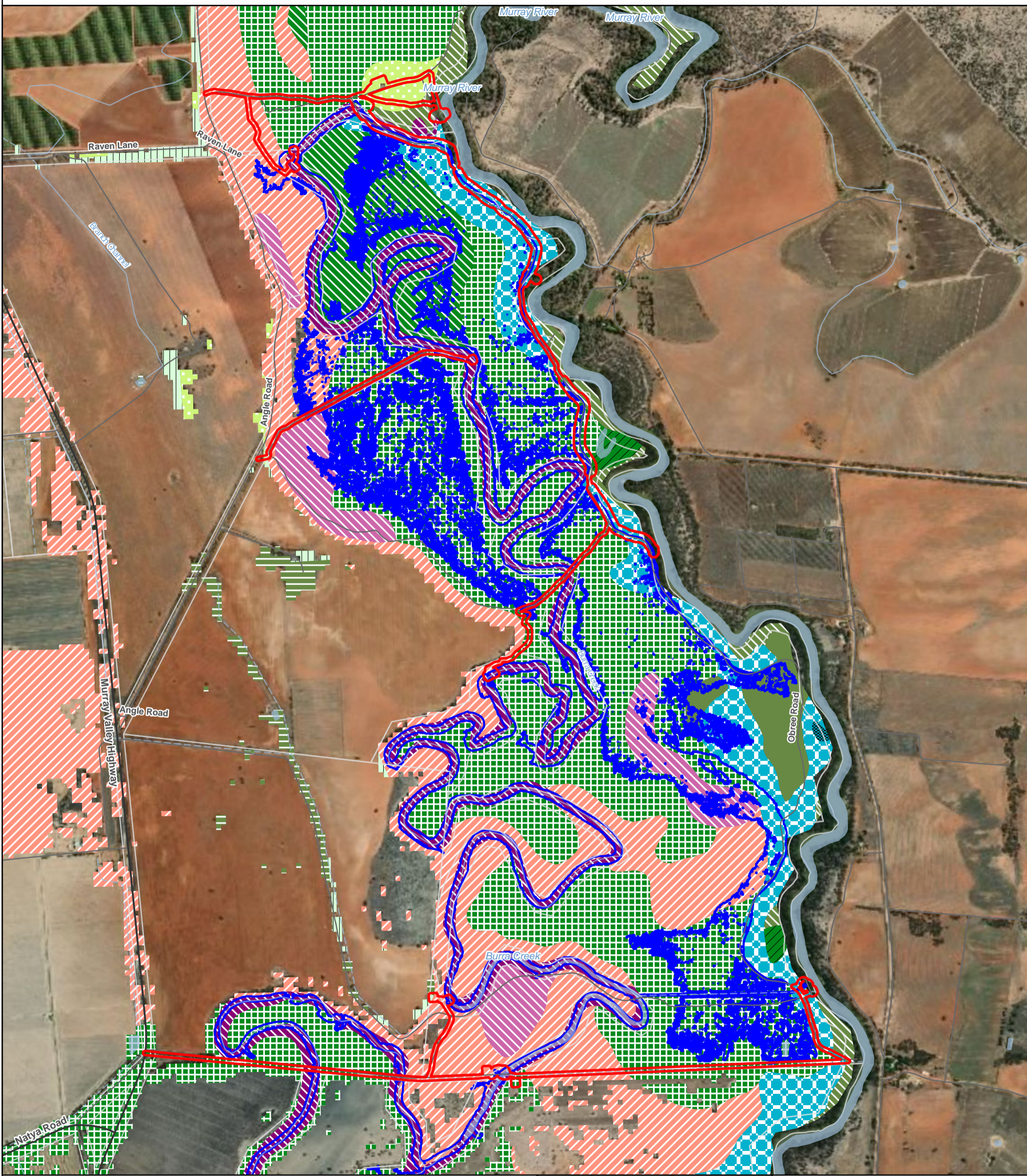


Figure 1.8 Burra Creek Floodplain Restoration Project - Managed Inundation Areas - EVCs, North

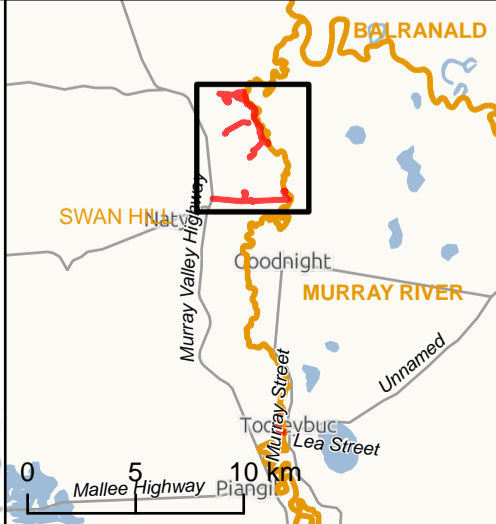


Legend

- Area of Investigation
- Inundation Area
- Major Road
- Minor Road
- Channel / Drain
- Watercourse Stream
- Waterbody
- Cadastre

Ecological Vegetation Classes - 2005

- | | |
|--|---|
| <ul style="list-style-type: none"> 97, Semi-arid Woodland 98, Semi-arid Chenopod Woodland 103, Riverine Chenopod Woodland 104, Lignum Swamp 106, Grassy Riverine Forest 158, Chenopod Mallee 295, Riverine Grassy Woodland | <ul style="list-style-type: none"> 808, Lignum Shrubland 810, Floodway Pond Herland 811, Grassy Riverine Forest/Floodway Pond Herland Complex 818, Shrubby Riverine Woodland 823, Lignum Swampy Woodland 992, Water Body - Fresh |
|--|---|



VMFRP IS297752

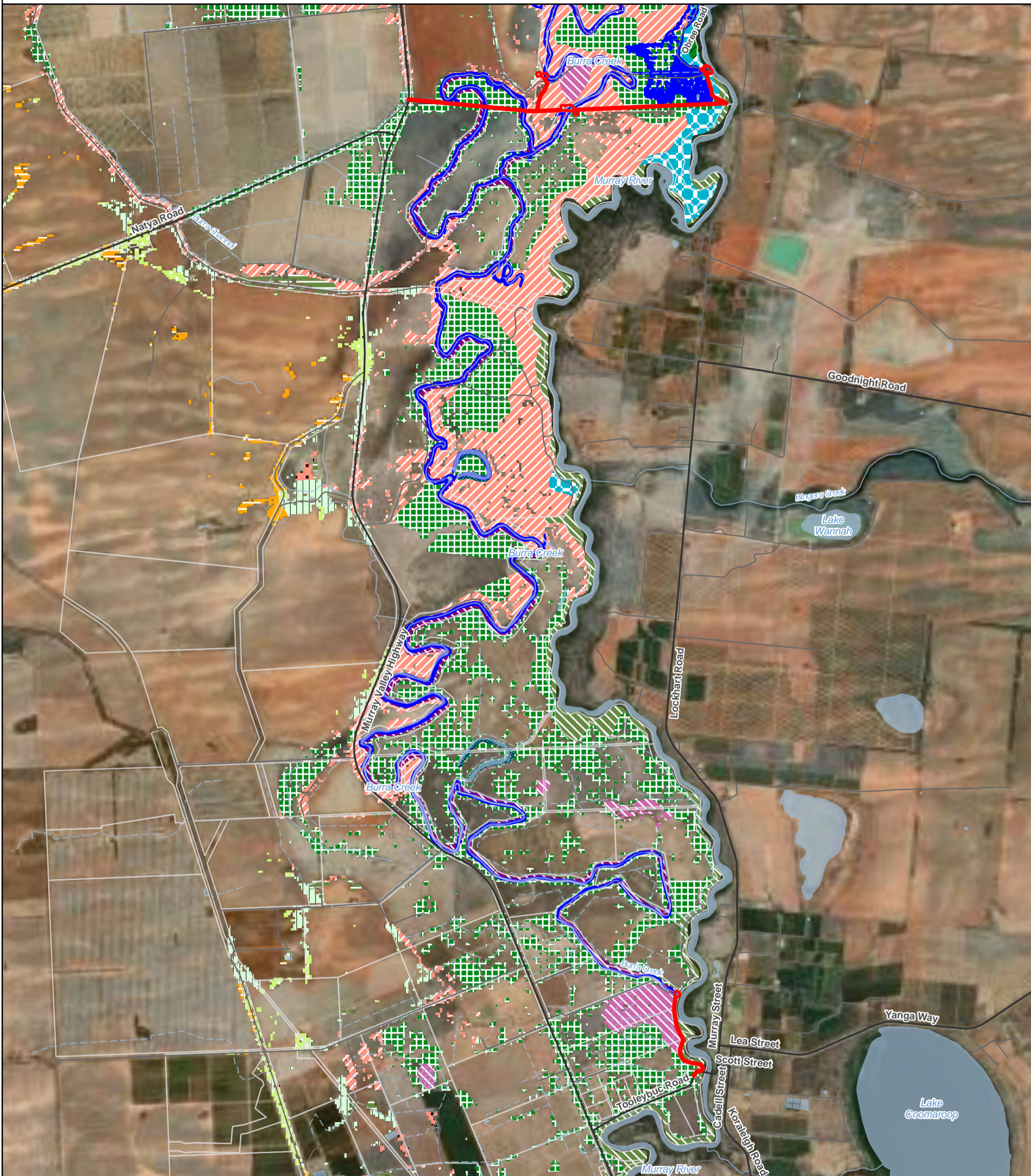
Name: GDA 1994 MGA Zone 55

0 400 800
Metres

DATA SOURCES
 © Commonwealth of Australia (Geoscience Australia) 2006
 Geodata Topo 250k Series 3; Vicmap Data © State of Victoria 2019; Jacobs 2019, GHD 2019.

COPYRIGHT: The concepts and information contained in this document are the copyright of Jacobs. Use or copying of the document in whole or in part without the written permission of Jacobs constitutes an infringement of copyright. Jacobs does not warrant that this document is definitive nor free of error and does not accept liability for any loss caused or arising from reliance upon information provided herein.

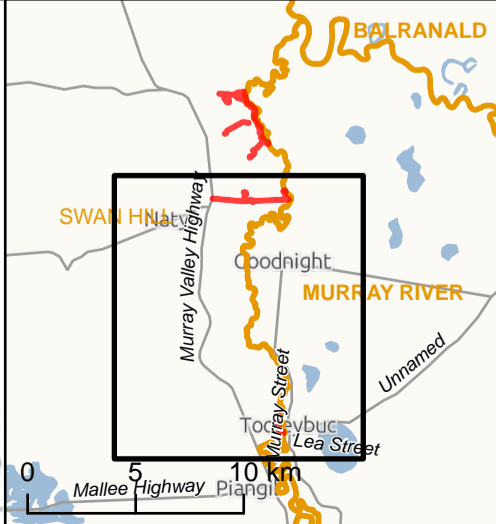
Figure 1.8 Burra Creek Floodplain Restoration Project - Managed Inundation Areas - EVCs, South



- Legend**
- Area of Investigation
 - Inundation Area
 - Major Road
 - Minor Road
 - Channel / Drain
 - Watercourse Stream
 - Waterbody
 - Wetland Swamp
 - Cadastre

- Ecological Vegetation Classes - 2005**
- 86, Woorinen Sands Mallee
 - 96, Ridged Plains Mallee
 - 97, Semi-arid Woodland
 - 98, Semi-arid Chenopod Woodland
 - 103, Riverine Chenopod Woodland
 - 104, Lignum Swamp
 - 106, Grassy Riverine Forest
 - 158, Chenopod Mallee

- 803, Plains Woodland
- 810, Floodway Pond Herbland
- 811, Grassy Riverine Forest/ Floodway Pond Herbland Complex
- 818, Shrubby Riverine Woodland
- 823, Lignum Swampy Woodland
- 824, Woorinen Mallee
- 992, Water Body - Fresh



VMFRP IS297752

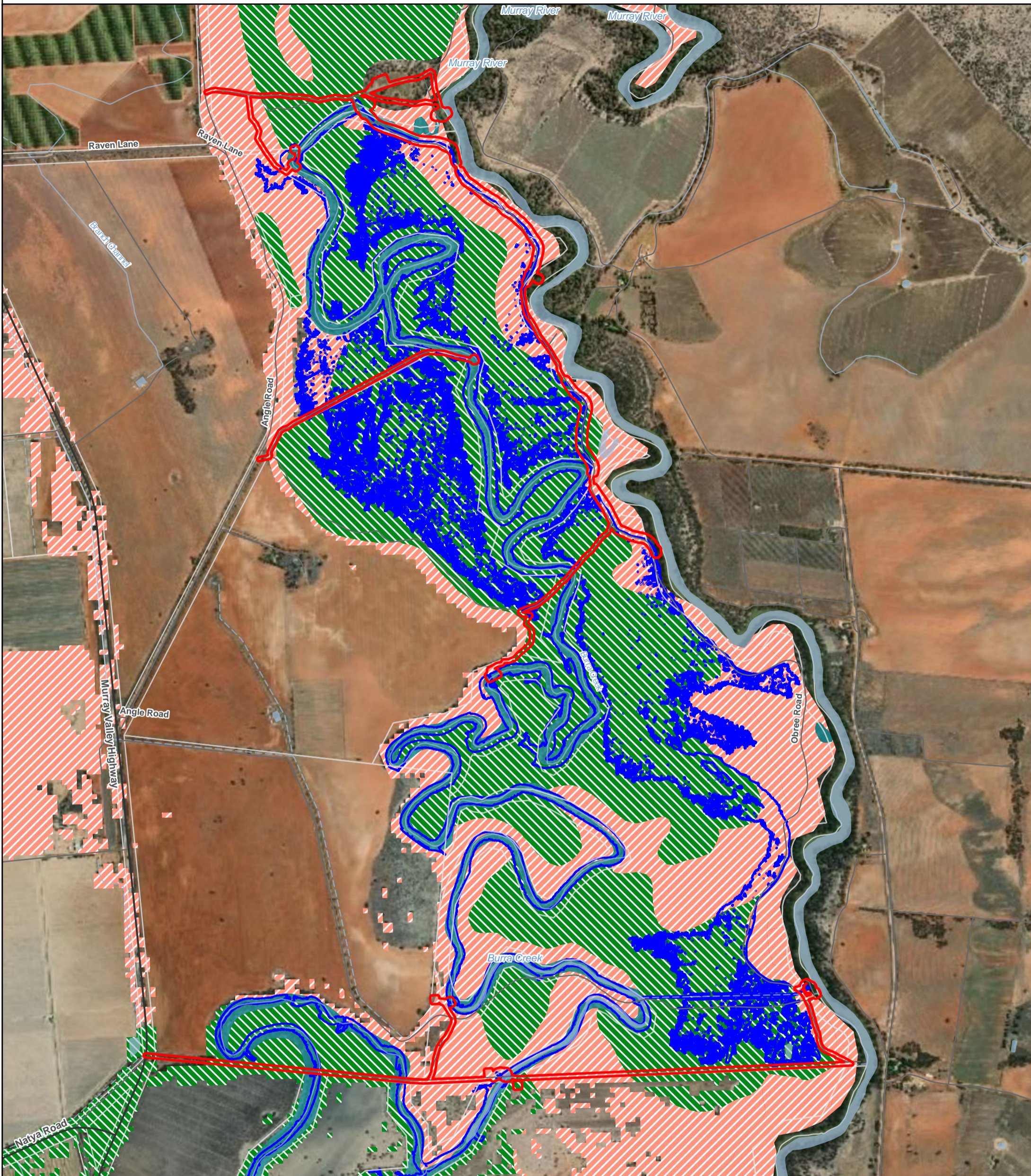
Name: GDA 1994 MGA Zone 55

0 400 800
Metres

DATA SOURCES
 © Commonwealth of Australia (Geoscience Australia) 2006
 Geodata Topo 250k Series 3; Vicmap Data © State of Victoria 2019; Jacobs 2019, GHD 2019.

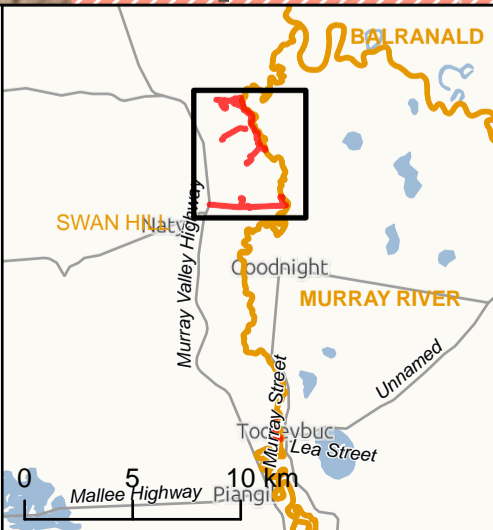
COPYRIGHT: The concepts and information contained in this document are the copyright of Jacobs. Use or copying of the document in whole or in part without the written permission of Jacobs constitutes an infringement of copyright. Jacobs does not warrant that this document is definitive nor free of error and does not accept liability for any loss caused or arising from reliance upon information provided herein.

Figure 1.8 Burra Creek Floodplain Restoration Project - Managed Inundation Areas - Water Regime Classes, North



Legend

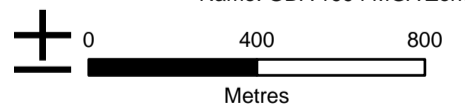
- Area of Investigation
- Inundation Area
- Major Road
- Minor Road
- Channel / Drain
- Watercourse Stream
- Waterbody
- Cadastre
- Water Regime Class**
- Black Box and Red Gum Woodland
- Lignum Shrubland and Woodland
- Seasonal Anabranch and Billabongs



VMFRP

IS297752

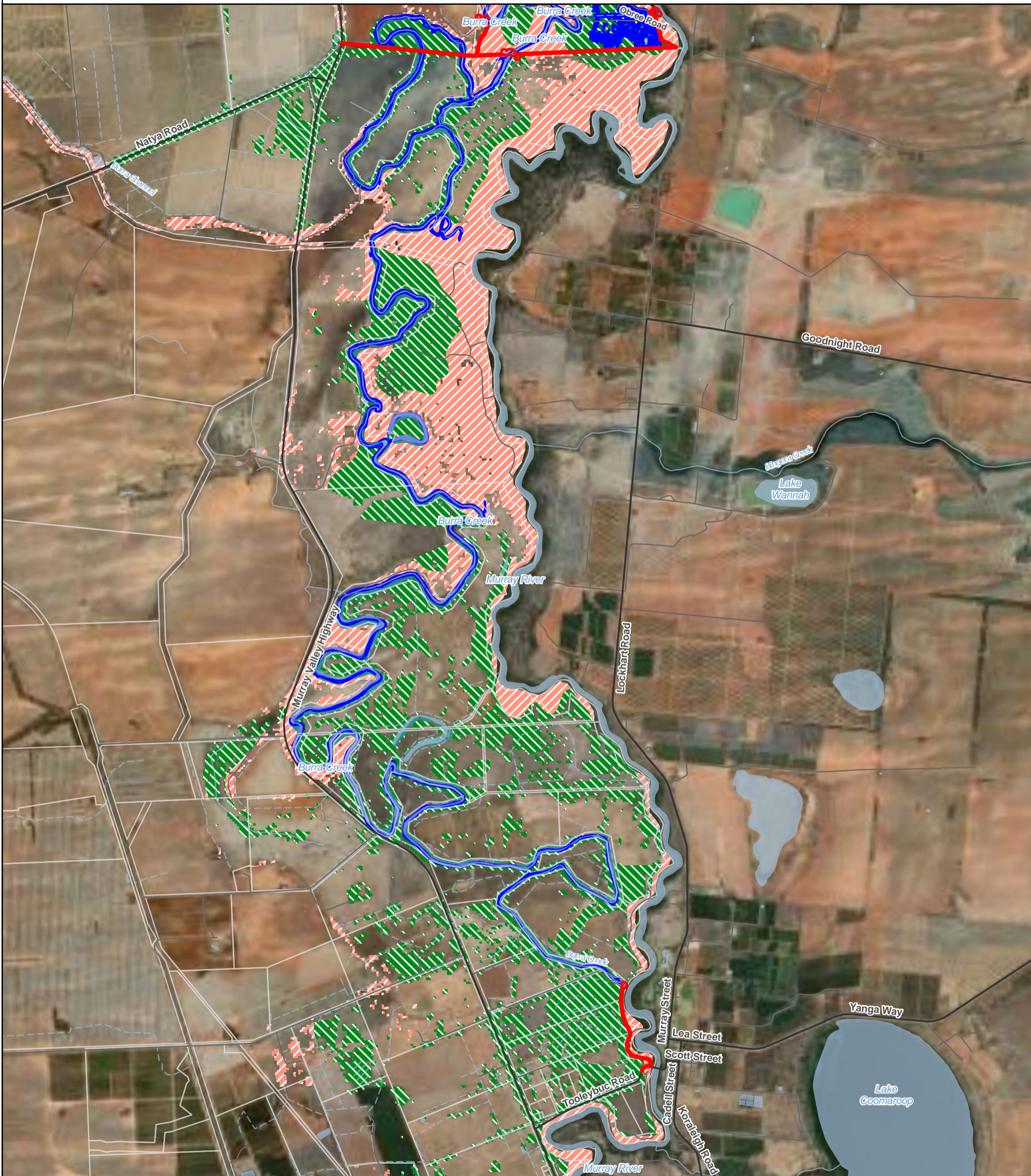
Name: GDA 1994 MGA Zone 55



DATA SOURCES
 © Commonwealth of Australia (Geoscience Australia) 2006
 Geodata Topo 250k Series 3; Vicmap Data © State of Victoria 2019; Jacobs 2019, GHD 2019.

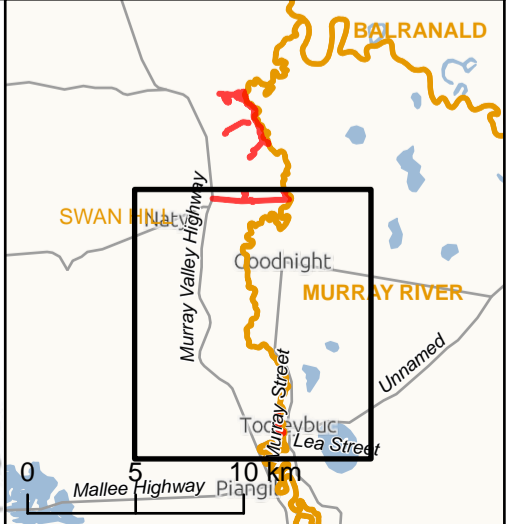
COPYRIGHT: The concepts and information contained in this document are the copyright of Jacobs. Use or copying of the document in whole or in part without the written permission of Jacobs constitutes an infringement of copyright. Jacobs does not warrant that this document is definitive nor free of error and does not accept liability for any loss caused or arising from reliance upon information provided herein.

Figure 1.8 Burra Creek Floodplain Restoration Project - Managed Inundation Areas - Water Regime Classes, South



- Legend**
- Area of Investigation
 - Inundation Area
 - Major Road
 - Minor Road
 - Channel / Drain
 - Watercourse Stream
 - Waterbody

- Wetland Swamp
 - Cadastre
- Water Regime Class**
- Black Box and Red Gum Woodland
 - Lignum Shrubland and Woodland
 - Seasonal Anabranch and Billabongs



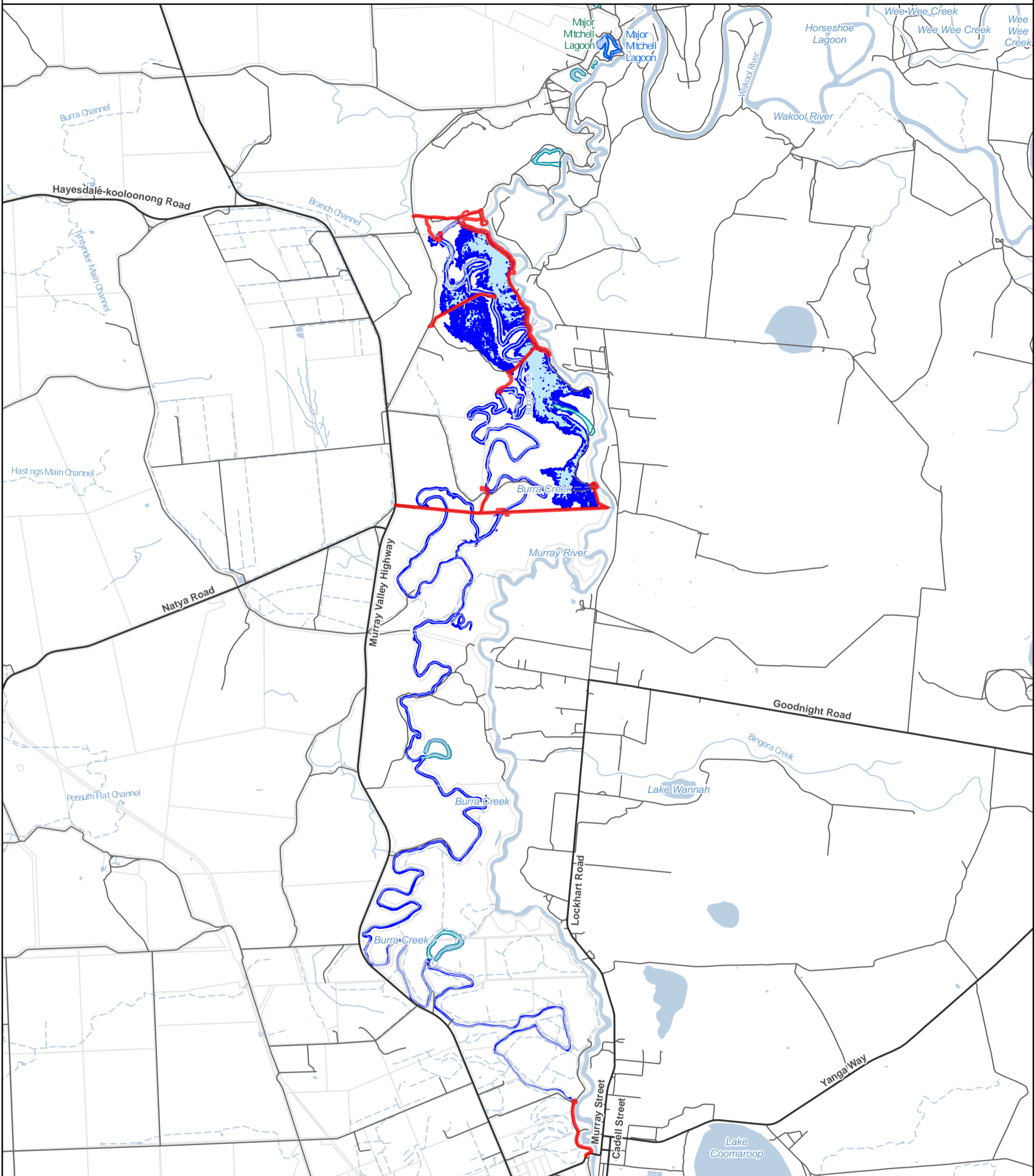
VMFRP IS297752

Name: GDA 1994 MGA Zone 55

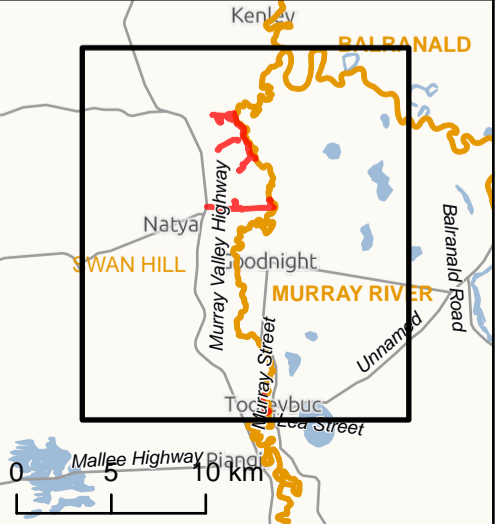
0 400 800
Metres

DATA SOURCES
 © Commonwealth of Australia (Geoscience Australia) 2006
 Geodata Topo 250k Series 3; Vicmap Data © State of Victoria 2019; Jacobs 2019, GHD 2019.

COPYRIGHT: The concepts and information contained in this document are the copyright of Jacobs. Use or copying of the document in whole or in part without the written permission of Jacobs constitutes an infringement of copyright. Jacobs does not warrant that this document is definitive nor free of error and does not accept liability for any loss caused or arising from reliance upon information provided herein.



- Legend**
- Area of Investigation
 - Inundation Area
 - Directory of Important Wetlands
 - Victorian Wetland Inventory (Current)
 - Major Road
 - Minor Road
 - Channel / Drain
 - Watercourse Stream
 - Waterbody
 - Wetland Swamp
 - Cadastre



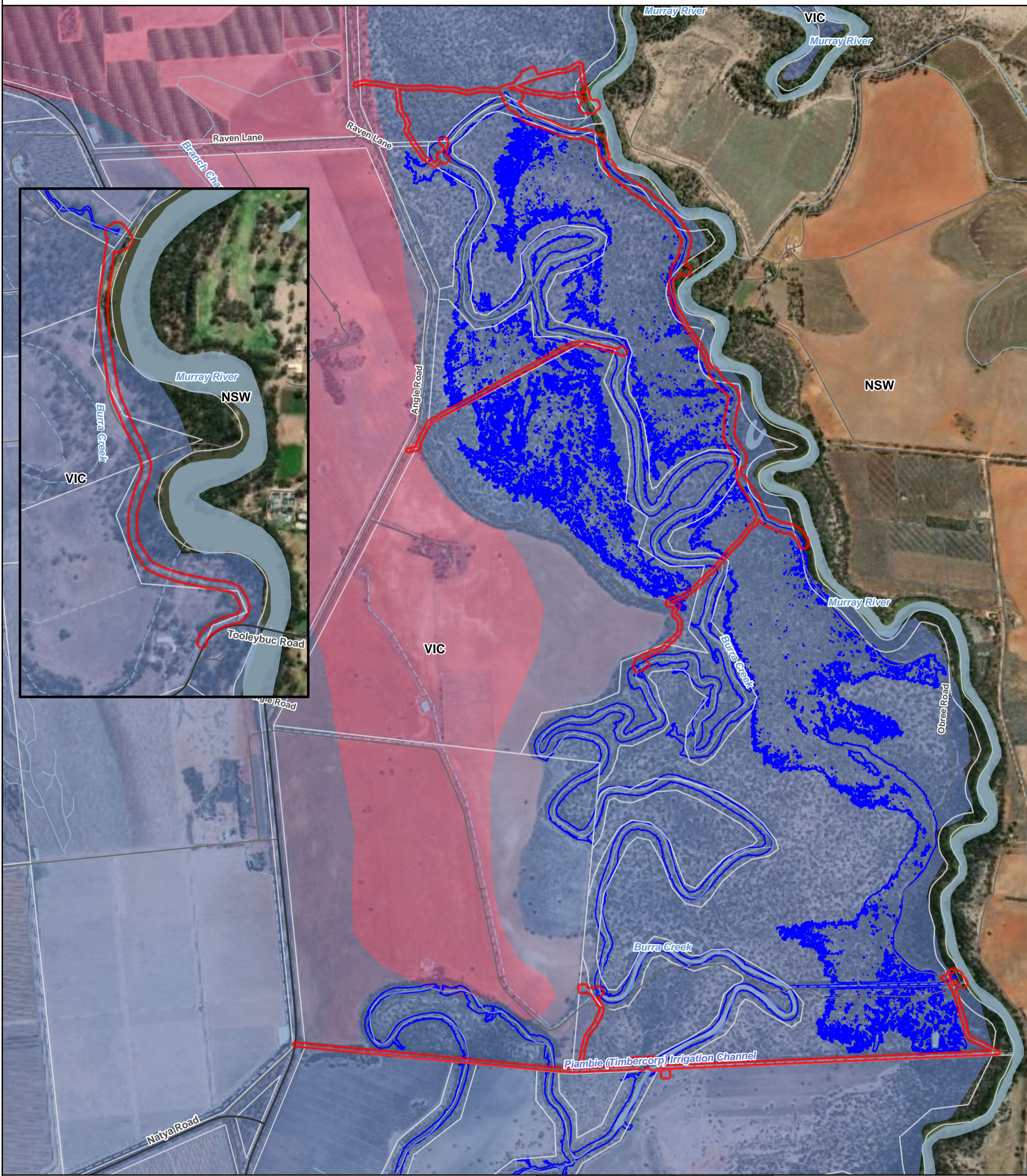
IS297753

Name: GDA 1994 MGA Zone 55

0 1,000 2,000
Metres

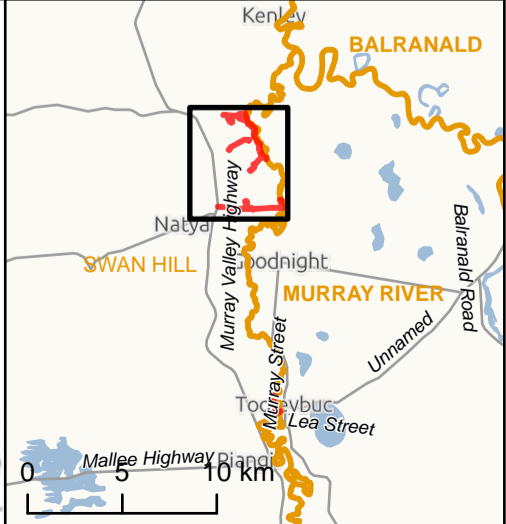
DATA SOURCES
 © Commonwealth of Australia (Geoscience Australia) 2006
 Geodata Topo 250k Series 3; Vicmap Data © State of Victoria 2019; Jacobs 2019, GHD 2019.

COPYRIGHT: The concepts and information contained in this document are the copyright of Jacobs. Use or copying of the document in whole or in part without the written permission of Jacobs constitutes an infringement of copyright. Jacobs does not warrant that this document is definitive nor free of error and does not accept liability for any loss caused or arising from reliance upon information provided herein.



- Legend**
- Area of Investigation
 - Inundation Area
 - Major Road
 - Minor Road
 - Channel / Drain
 - Watercourse Stream

- Waterbody
 - Cadastre
- Geomorphology of Victoria**
- North Western Dunefields and Plains (DP)
 - Northern Riverine Plain (RP)



IS297752

Name: GDA 1994 MGA Zone 55

0 400 800
Metres

DATA SOURCES
 © Commonwealth of Australia (Geoscience Australia) 2006
 Geodata Topo 250k Series 3; Vicmap Data © State of Victoria 2019; Jacobs 2019, GHD 2019.

COPYRIGHT: The concepts and information contained in this document are the copyright of Jacobs. Use or copying of the document in whole or in part without the written permission of Jacobs constitutes an infringement of copyright. Jacobs does not warrant that this document is definitive nor free of error and does not accept liability for any loss caused or arising from reliance upon information provided herein.

