

**Legend**

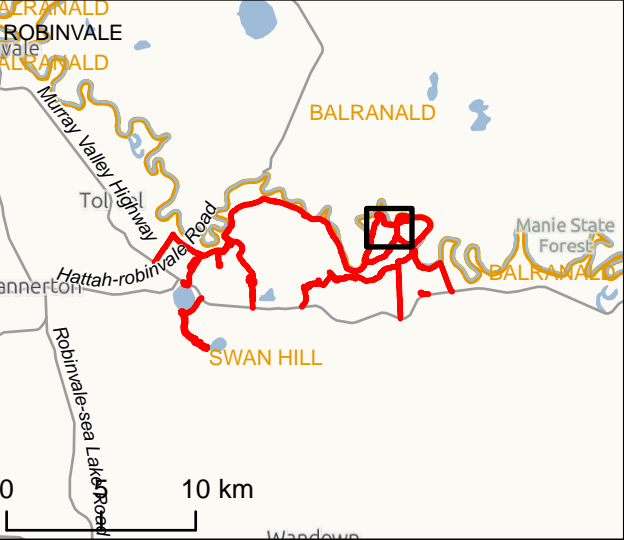
- Development Footprint
- Area of Investigation
- Construction Footprint
- Inundation Area
- Waterbody
- Cadastre
- Local Government Areas

IS297792

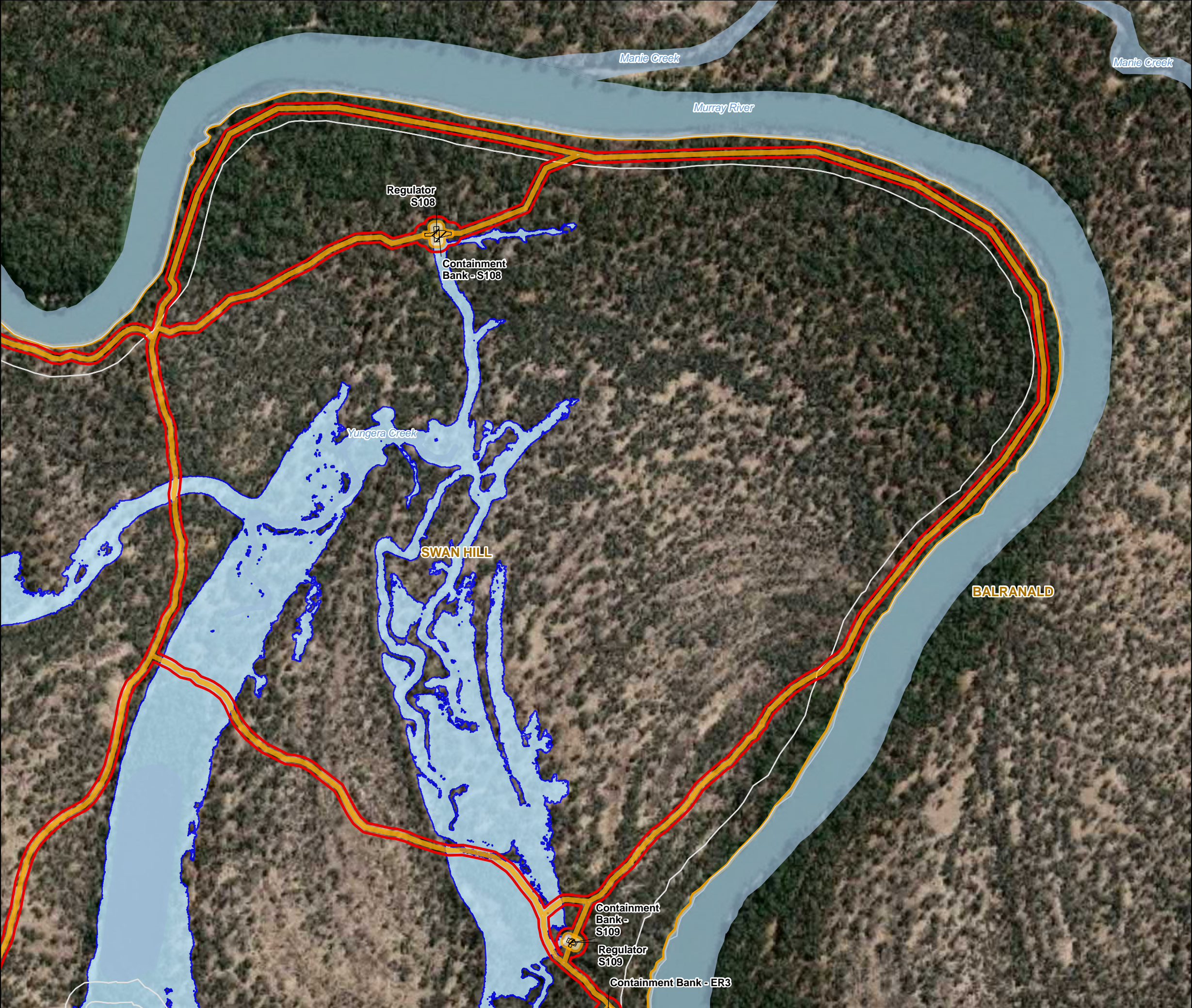
0 100 200  
Metres

**DATA SOURCES**  
© Commonwealth of Australia (Geoscience Australia) 2006 Geodata Topo 250k Series 3; Vicmap Data © State of Victoria 2019; Jacobs & GHD 2019 - 20.

**COPYRIGHT:** The concepts and information contained in this document are the copyright of Jacobs. Use or copying of the document in whole or in part without the written permission of Jacobs constitutes an infringement of copyright. Jacobs does not warrant that this document is definitive nor free of error and does not accept liability for any loss caused or arising from reliance upon information provided herein.







**Legend**

- Development Footprint
- Area of Investigation
- Construction Footprint
- Inundation Area
- Waterbody
- Cadastre
- Local Government Areas

IS297792

0 100 200  
Metres

**DATA SOURCES**  
© Commonwealth of Australia (Geoscience Australia) 2006 Geodata Topo 250k Series 3; Vicmap Data © State of Victoria 2019; Jacobs & GHD 2019 - 20.

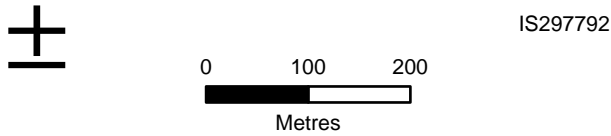
**COPYRIGHT:** The concepts and information contained in this document are the copyright of Jacobs. Use or copying of the document in whole or in part without the written permission of Jacobs constitutes an infringement of copyright. Jacobs does not warrant that this document is definitive nor free of error and does not accept liability for any loss caused or arising from reliance upon information provided herein.





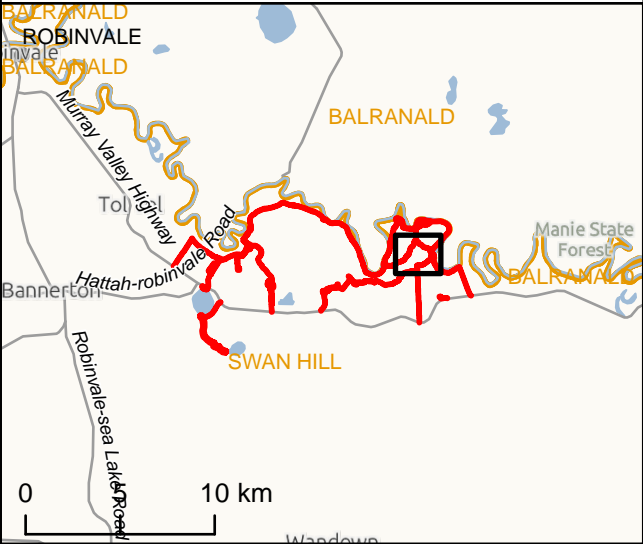


- Legend**
- Development Footprint
  - Area of Investigation
  - Construction Footprint
  - Inundation Area
  - Waterbody
  - Cadastre
  - Local Government Areas

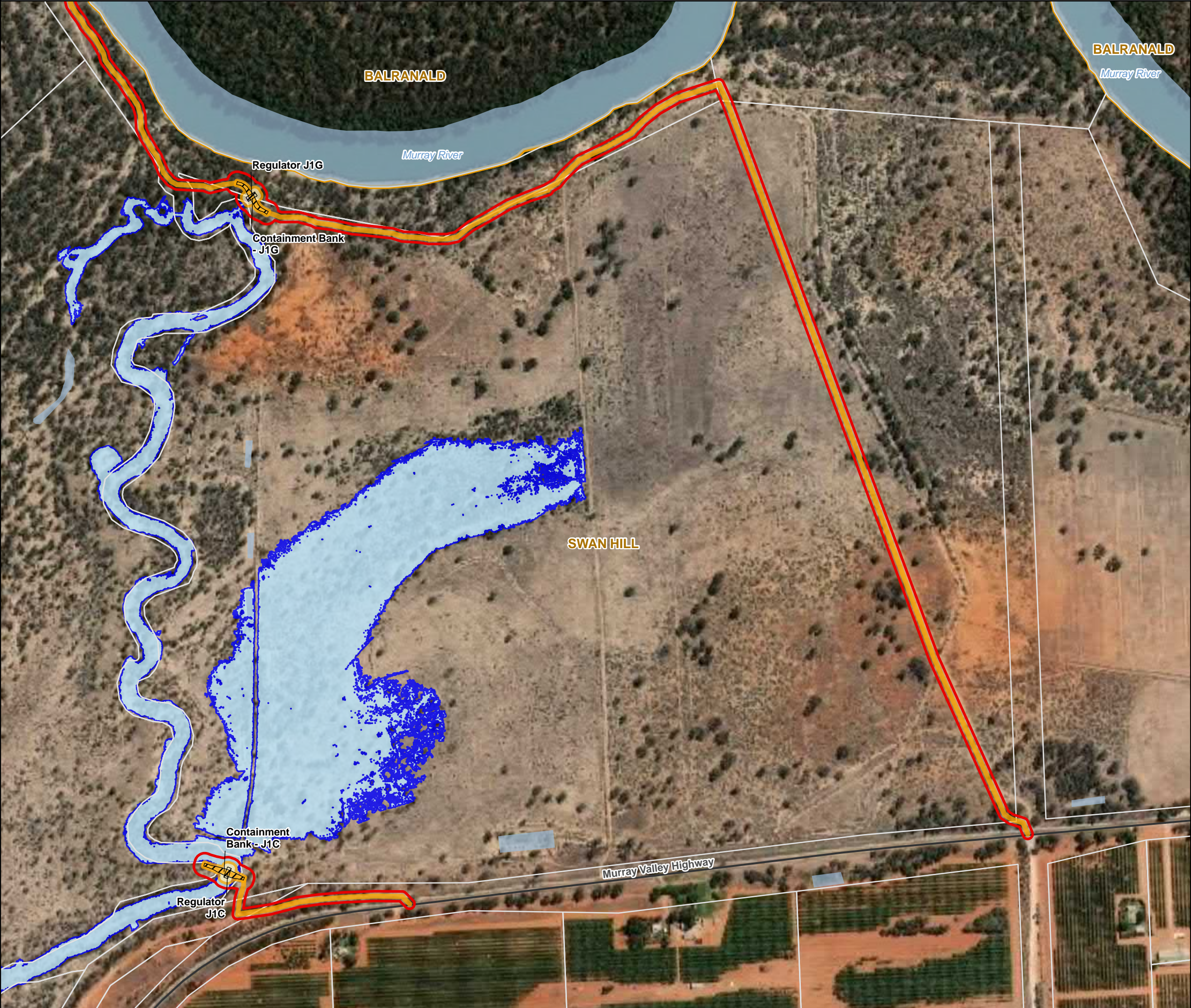


**DATA SOURCES**  
 © Commonwealth of Australia (Geoscience Australia) 2006 Geodata Topo 250k Series 3; Vicmap Data © State of Victoria 2019; Jacobs & GHD 2019 - 20.

**COPYRIGHT:** The concepts and information contained in this document are the copyright of Jacobs. Use or copying of the document in whole or in part without the written permission of Jacobs constitutes an infringement of copyright. Jacobs does not warrant that this document is definitive nor free of error and does not accept liability for any loss caused or arising from reliance upon information provided herein.







**Legend**

- Development Footprint
- Area of Investigation
- Construction Footprint
- Inundation Area
- Major Road
- Waterbody
- Cadastre
- Local Government Areas

±

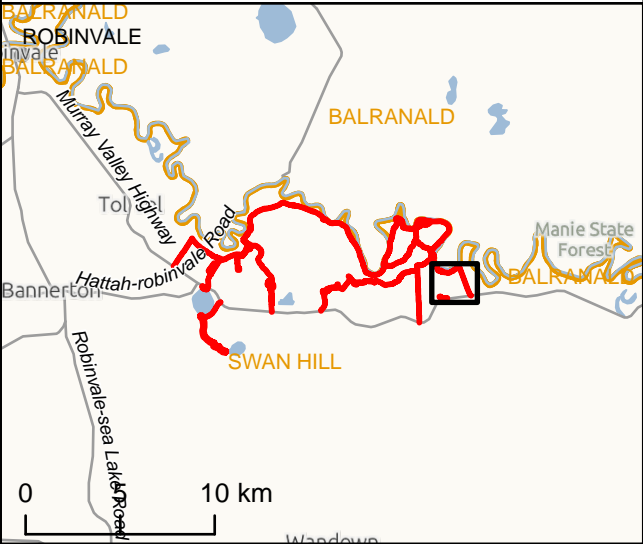
0 100 200

Metres

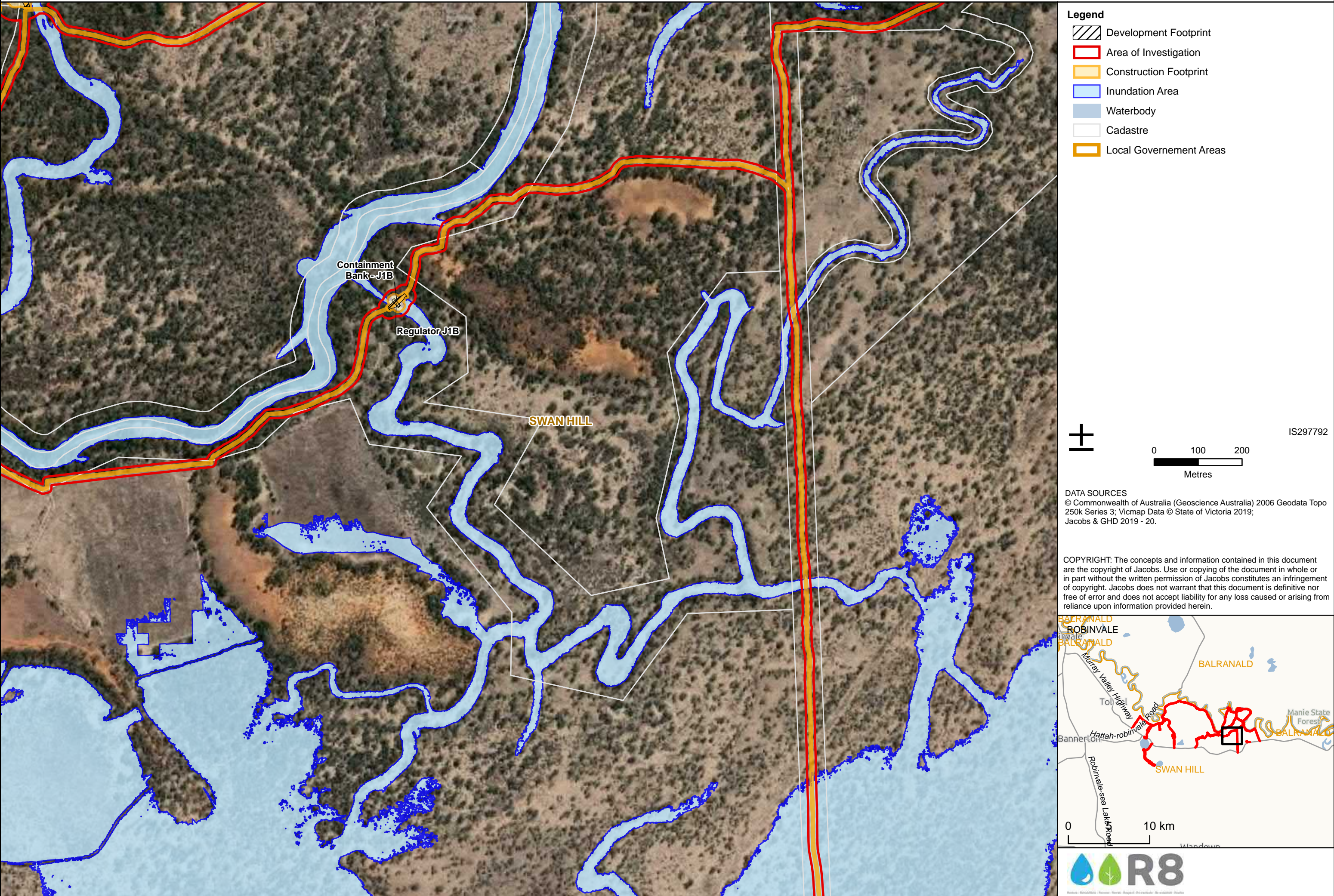
IS297792

**DATA SOURCES**  
© Commonwealth of Australia (Geoscience Australia) 2006 Geodata Topo 250k Series 3; Vicmap Data © State of Victoria 2019; Jacobs & GHD 2019 - 20.

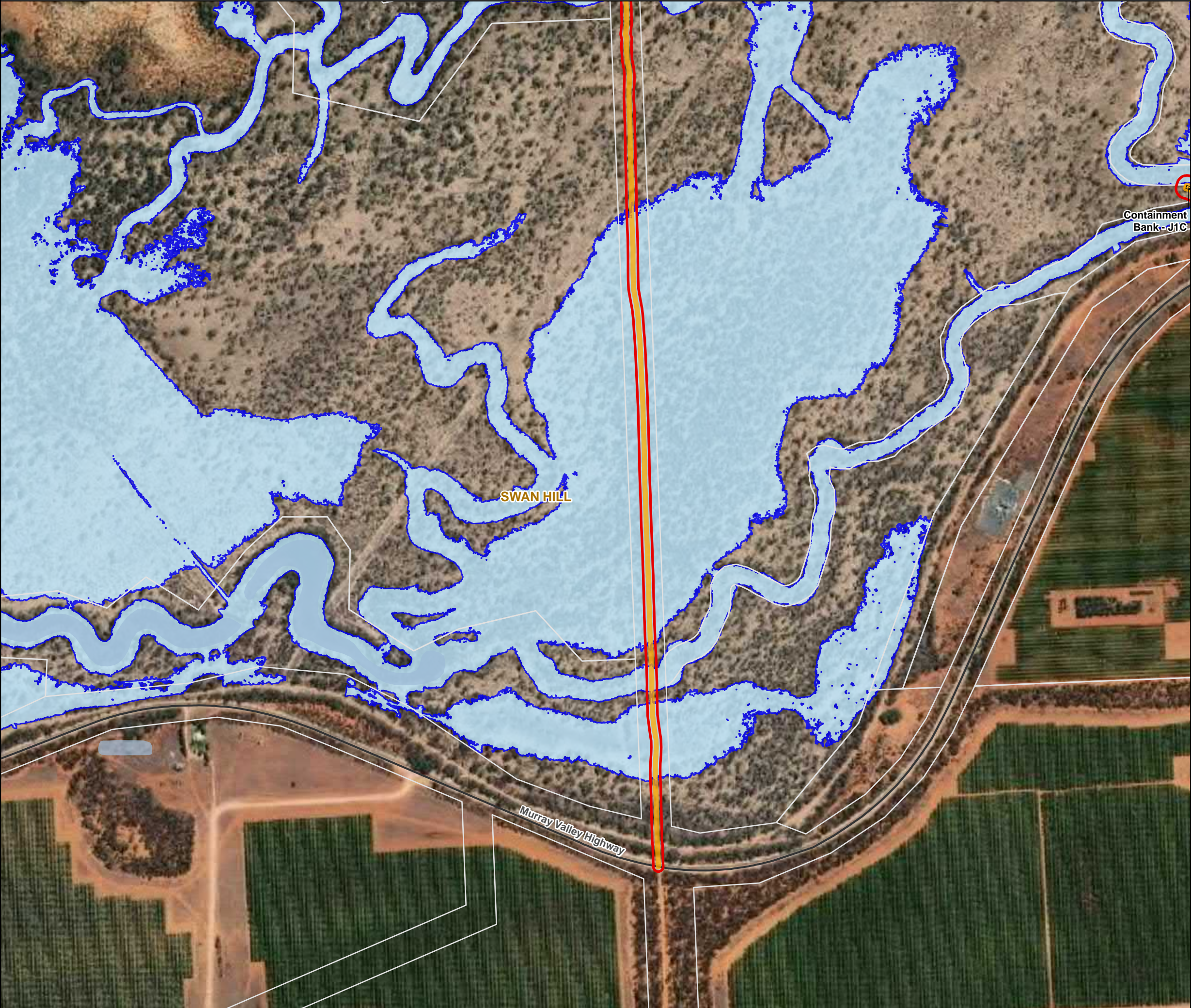
**COPYRIGHT:** The concepts and information contained in this document are the copyright of Jacobs. Use or copying of the document in whole or in part without the written permission of Jacobs constitutes an infringement of copyright. Jacobs does not warrant that this document is definitive nor free of error and does not accept liability for any loss caused or arising from reliance upon information provided herein.











**Legend**

- Development Footprint
- Area of Investigation
- Construction Footprint
- Inundation Area
- Major Road
- Waterbody
- Cadastre
- Local Government Areas

IS297792

0 100 200  
Metres

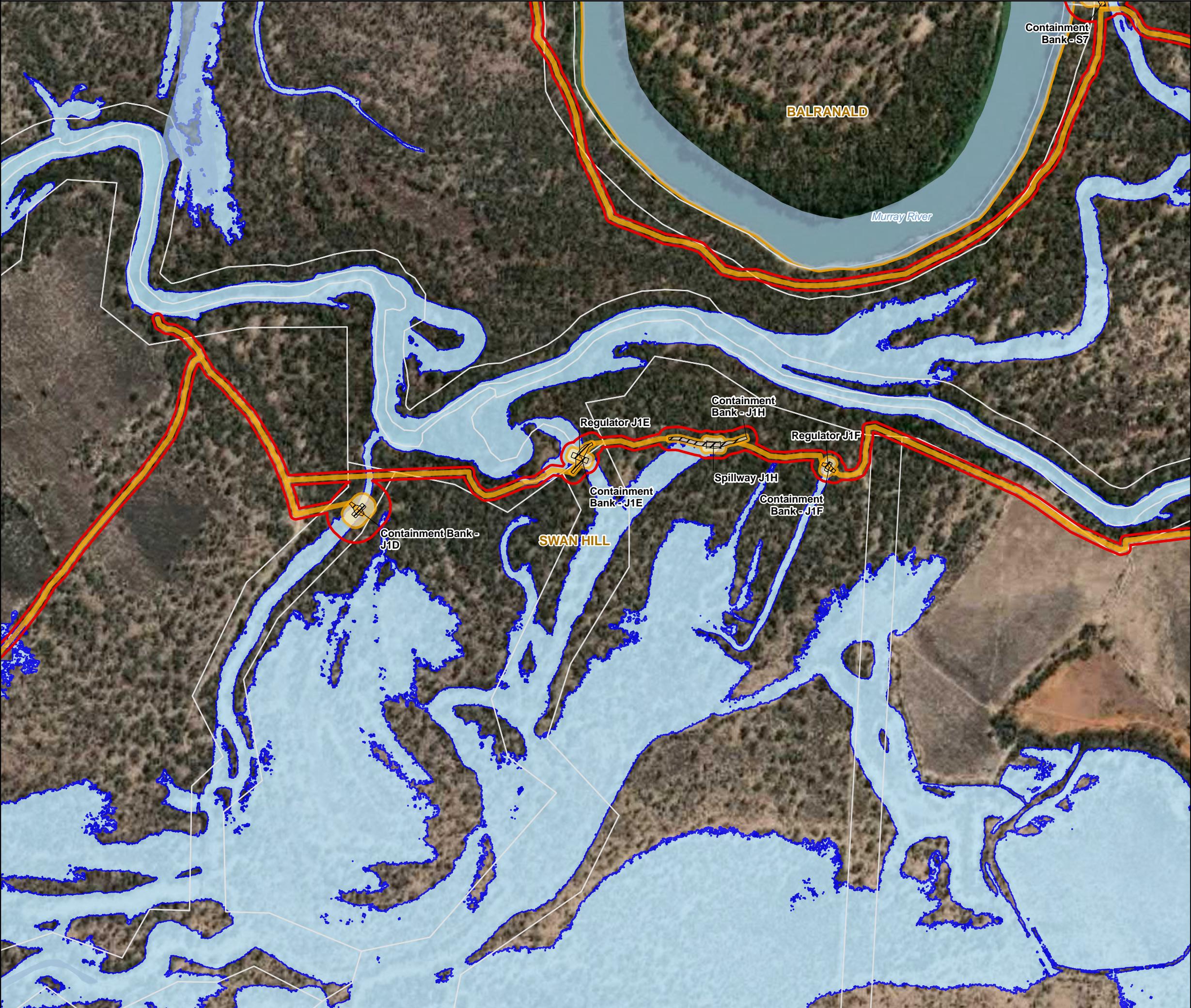
DATA SOURCES  
© Commonwealth of Australia (Geoscience Australia) 2006 Geodata Topo 250k Series 3; Vicmap Data © State of Victoria 2019; Jacobs & GHD 2019 - 20.

COPYRIGHT: The concepts and information contained in this document are the copyright of Jacobs. Use or copying of the document in whole or in part without the written permission of Jacobs constitutes an infringement of copyright. Jacobs does not warrant that this document is definitive nor free of error and does not accept liability for any loss caused or arising from reliance upon information provided herein.

0 10 km

**R8**





Legend

- Development Footprint
- Area of Investigation
- Construction Footprint
- Inundation Area
- Waterbody
- Cadastre
- Local Government Areas

IS297792

0 100 200

Metres

DATA SOURCES

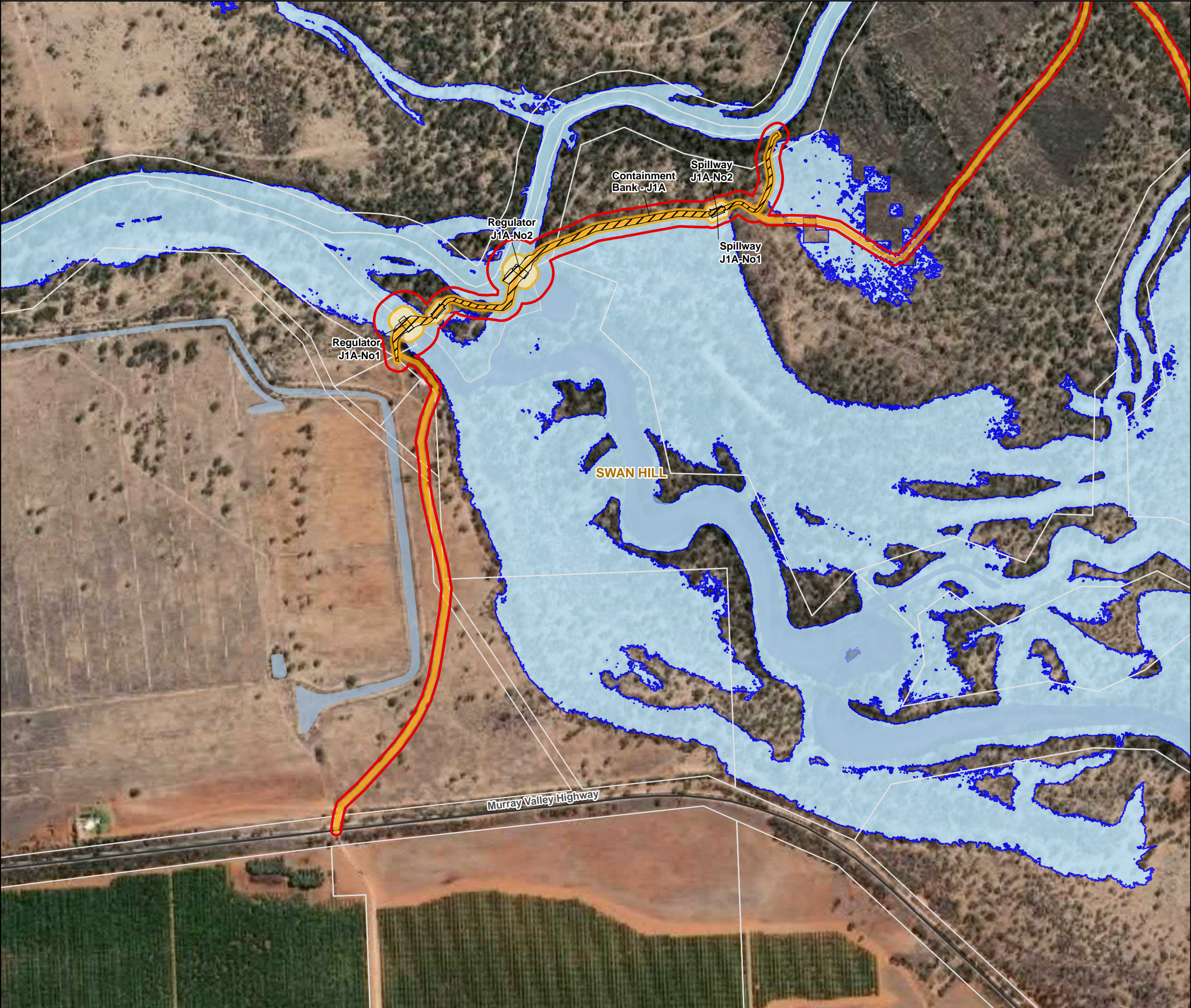
© Commonwealth of Australia (Geoscience Australia) 2006 Geodata Topo 250k Series 3; Vicmap Data © State of Victoria 2019; Jacobs & GHD 2019 - 20.

COPYRIGHT: The concepts and information contained in this document are the copyright of Jacobs. Use or copying of the document in whole or in part without the written permission of Jacobs constitutes an infringement of copyright. Jacobs does not warrant that this document is definitive nor free of error and does not accept liability for any loss caused or arising from reliance upon information provided herein.

Inset map showing the location of the study area within the broader region of Swan Hill, Balranald, and Robinvale. The map includes labels for BALRANALD, ROBINVALE, SWAN HILL, Murray Valley Highway, Hattah-robinvale Road, and Robinvale-sea Lake Road. A scale bar indicates 0 to 10 km.

R8  
Rural Resilience Research Network





**Legend**

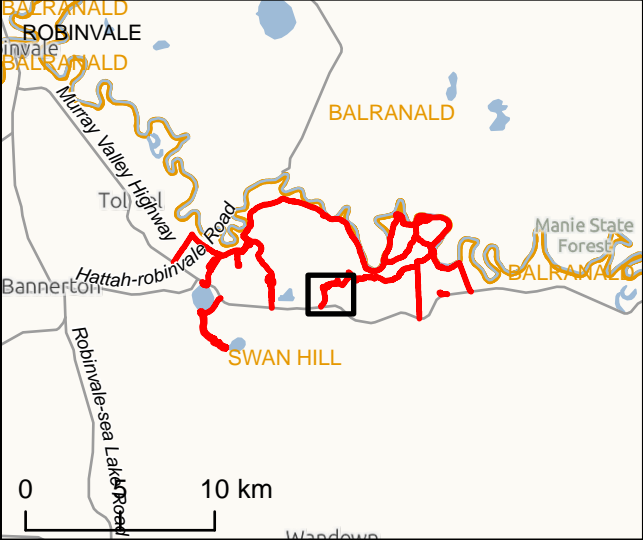
- Development Footprint
- Area of Investigation
- Construction Footprint
- Inundation Area
- Major Road
- Waterbody
- Cadastre
- Local Government Areas

IS297792

0 100 200  
Metres

DATA SOURCES  
© Commonwealth of Australia (Geoscience Australia) 2006 Geodata Topo 250k Series 3; Vicmap Data © State of Victoria 2019; Jacobs & GHD 2019 - 20.

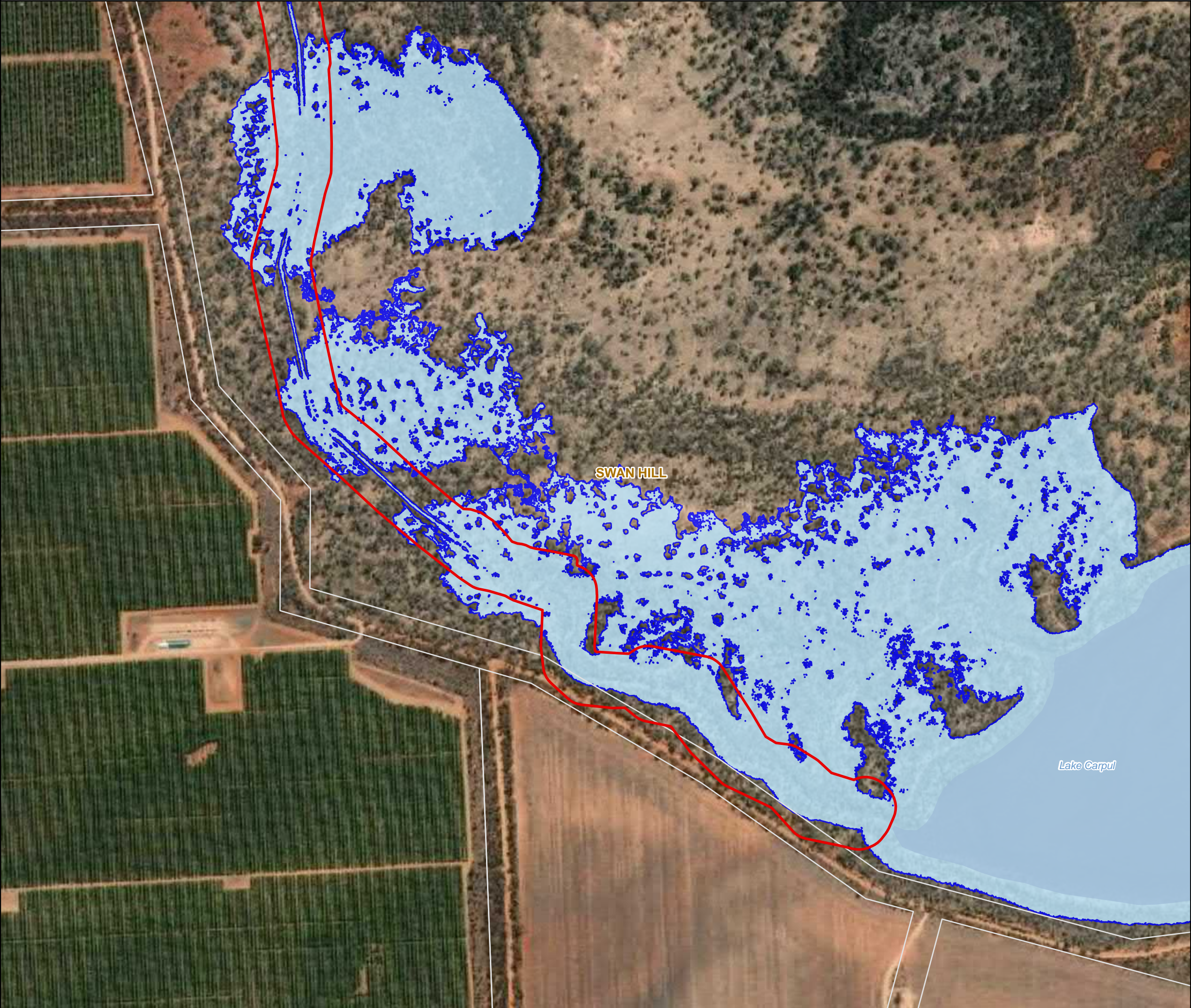
COPYRIGHT: The concepts and information contained in this document are the copyright of Jacobs. Use or copying of the document in whole or in part without the written permission of Jacobs constitutes an infringement of copyright. Jacobs does not warrant that this document is definitive nor free of error and does not accept liability for any loss caused or arising from reliance upon information provided herein.











**Legend**

- Area of Investigation
- Inundation Area
- Waterbody
- Cadastre
- Local Government Areas

IS297792

0 100 200  
Metres

DATA SOURCES  
© Commonwealth of Australia (Geoscience Australia) 2006 Geodata Topo 250k Series 3; Vicmap Data © State of Victoria 2019; Jacobs & GHD 2019 - 20.

COPYRIGHT: The concepts and information contained in this document are the copyright of Jacobs. Use or copying of the document in whole or in part without the written permission of Jacobs constitutes an infringement of copyright. Jacobs does not warrant that this document is definitive nor free of error and does not accept liability for any loss caused or arising from reliance upon information provided herein.

0 10 km