

Appendix 3—Conservation and Landscape Interest Zones

Plan 14 shows conservation zones (C) and landscape interest zones (L) included in the planning schemes. The more important features contained in each area are listed hereunder.

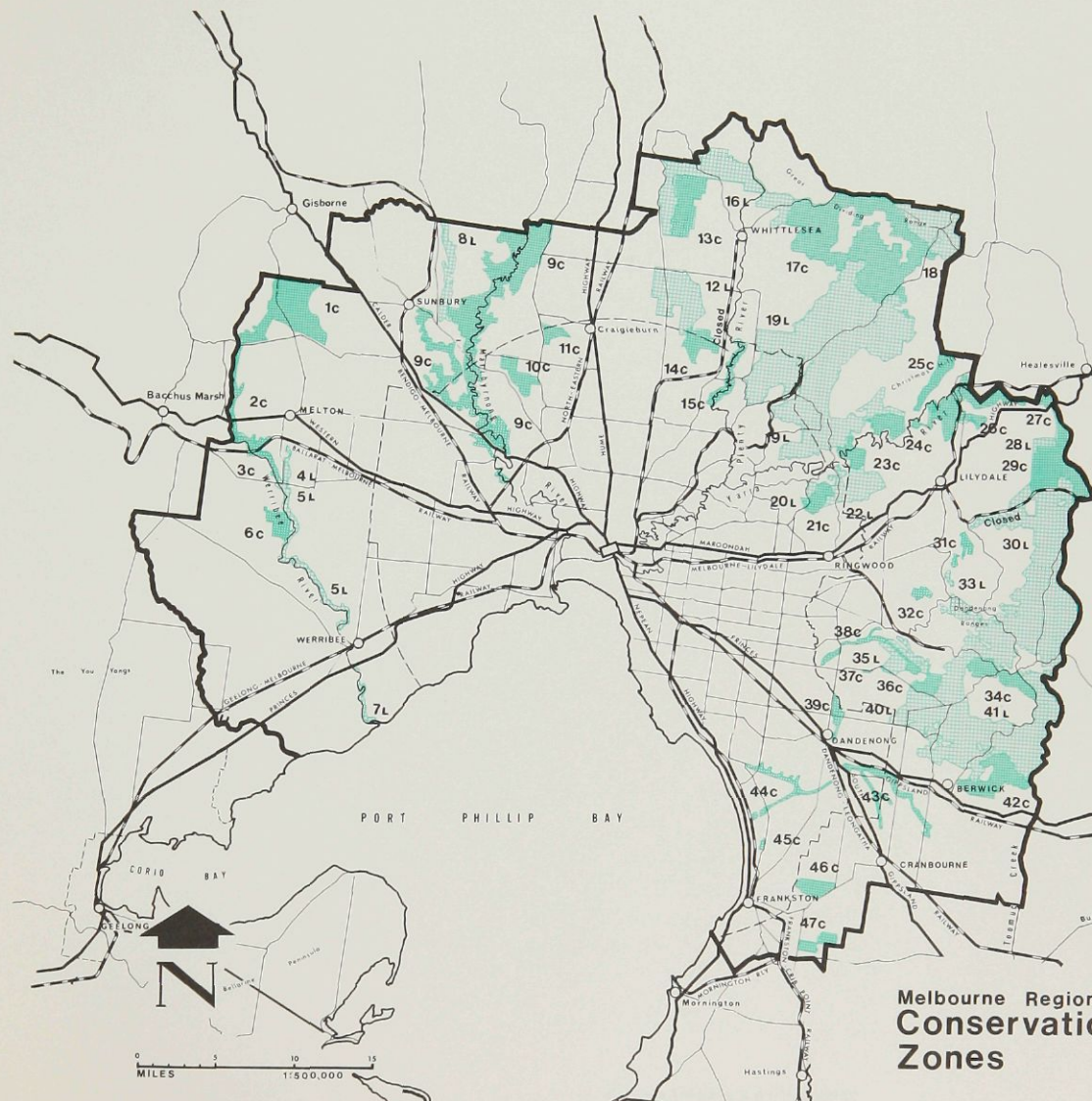
Area

- 1C. The Black Hills. Attractive tree covered area of broken terrain. Dry sclerophyll woodland type vegetation with iron bark as the predominant species.
- 2C. Djerriwarrh Creek. Attractive tree covered area including grey box, yellow box, bull mallee and associated communities; providing excellent habitat for birds and mammals including migrant birds, trillers, whistlers, woodswallows, wallaby, echidna and wombat.
- 3C. Exford Weir. Recreational potential and refuge for water birds.
- 4L. Toolern Creek. Small valley providing contrast to the generally flat terrain.
- 5L. Werribee River. The river cuts into basalt forming a small sheltered valley tract.
- 6C. Eynesbury Settlement. The only remaining area of extensive tree cover to the west of Melbourne. Open forest with grasslands, including high quality stands of grey box and buloke providing habitat for bush birds and mammals.
- 7L. South Werribee. Riverine landscape with recreational potential.
- 8L. Emu Creek. Attractive sheltered valley providing contrast in a generally flat terrain.
- 9C. Maribyrnong River and its tributaries (Deep and Jackson Creeks). Deeply incised river valleys provide a dramatic landscape contrast to an otherwise flat to undulating terrain. Open forest grassland type vegetation with dense understorey in places along the streams. Rare species include desert cassia and other mallee shrubs. The habitat provides cover for the platypus and native rats. Geologically the area forms the boundary between outcroppings of the ordovician and silurian periods, and fossils, conglomerates and granite plus the sydenham organ pipes are found here. Along the Maribyrnong, aboriginal artifacts, implements and remains have been found.
- 10C. Mt. Gellibrand and Greenvale. Commands extensive views of the metropolitan area. To the north has a park like appearance with high quality stands of red gum. Recreational potential.
- 11C. North of Greenvale Reservoir. Protects water quality.
- 12L. Woodstock. Scattered red gums and open savannah give a park like appearance and provide suitable habitat for hollow nesting birds such as owls, cockatoos and parrots.
- 13C. Eden Park. Park like character interspersed with wooded ridges and thick bush to the north. Red gums and open savannah provide an important habitat for birds and mammals, including the black wallaby.
- 14C. South Morang Hills. Lightly timbered upland area containing granodiorite intrusions.
- 15C. Plenty River Valley. River landscape including a steep gorge at Morang. Forest type vegetation with a deep understorey near the river includes red gum and red stringy bark. A breeding ground for the platypus and water rats and an important flyway for birds particularly bushbirds, migrants, bell minors and cockatoos.
- 16L. North and west of Whittlesea. Hill scenery with red gums and open savannah.
- 17C. Areas abutting Kinglake National Park. Wet to mid dense sclerophyll forest on steep slopes includes long leaf box, red stringy bark, yellow box and broadleaf peppermint, providing habitat for grey kangaroos, black wallaby, wombat, echidna and gliders. Associated with the adjoining areas in public ownership forms a large nature conservation area.
- 18L. Kinglake East. Partly tree covered gently undulating plateau containing agricultural activities.
- 19L. North-eastern hill country. Pleasant steep to undulating hill country, partly covered by scattered open forest with rural uses intermixed, grazing being the main activity.
- 20L. West of Warrandyte. Hilly country in which the predominant rural use is orchards. Remaining tree cover includes box and stringy bark.

6 Appendices

- 21C. South of Warrandyte. Broken tree covered landscape with mid dense mixed box stringybark forest.
- 22L. East of Warrandyte. Hilly country with mixed rural activities.
- 23C. West of Wonga Park. Broken terrain covered by mid dense forest with a dense shrub layer. Vegetation includes red gum, red stringy bark, longleaf box and yellow box, providing habitat for the rare tuan and sminthopsis mouse, grey kangaroo, black wallaby, platypus and many species of bush and water birds.
- 24C. Bend of Islands. Hill and bush landscape with flora and fauna characteristics generally similar to the preceding area.
- 25C. Yarra Fault Escarpment. A dominant landscape feature in the Yarra Valley and an important geological structure. Flora and fauna characteristics generally similar to the preceding area.
- 26C. Yering Floodplain. River flats forming natural storage essential to reducing downstream flooding.
- 27C. West of Healesville. Mixed scrub and dry sclerophyll woodland includes manna gums, messmate, peppermint and wattles providing habitat for black wallaby, wombat, bandicoot and gliders, as well as flyways and breeding grounds for bush and water birds. A ring dyke of granite and contiguous sediments are important geological features.
- 28L. North of Warramate Hills. Partly tree covered elevated area.
- 29C. Warramate Hills. Steep partially tree covered hills rising out of the plains adjoining the Yarra. Flora and fauna is generally similar to that in 27C.
- 30L. Woori Yallock Valley. Undulating terrain containing scattered tree cover intermixed with rural activities, principally grazing.
- 31C. Kalorama. Steep mountain slopes covered with rare wet sclerophyll forest with mountain ash as a principal species providing in conjunction with the adjoining state forest a complex and extensive habitat for mammals including koala and deer as well as bats.
- 32C. The Basin. Mixed eucalypt forest includes high quality stands of red stringybark, longleaf box, manna gum, grey gum, messmate and peppermint and in conjunction with adjoining open space and forest reserve provides important habitat for mammals including koalas.
- 33L. South and west of Olinda. Attractive landscape with rural uses.
- 34C. North of Cardinia Creek Reservoir. Part of the reservoir catchment in which development must be restricted so as to maintain water quality.
- 35L. North of Lysterfield Hills. Rural landscape with grazing as the principal use.
- 36C. North east of Lysterfield Hills. Tree covered area including high quality stands of messmate peppermint and red gum. Rich in orchid flora including caledonia and diuris.
- 37C. Northern face of Lysterfield Hills. The Hills are a significant landscape feature visible from a considerable distance.
- 38C. Floodway of Corhanwarrabul Creek. Flood prone land.
- 39C. Floodway of Dandenong Creek. Flood prone land.
- 40L. North of Narre Warren. Rural landscape with scattered tree cover, and grazing as the principal use.
- 41L. North of Berwick and Upper Beaconsfield. Broken country with scattered tree cover.
- 42C. Upper Beaconsfield. Steep broken terrain, the southern escarpment of which is a dominant landscape element for flat areas to the south. Various habitats range from dry to wet sclerophyll to open forest, containing a wide range of eucalypts, and heathlands.
- 43C. Hallam Floodway. Flood prone land.
- 44C. Floodway of Dandenong Creek. Flood prone land.
- 45C. Seaford Swamp. Habitat for waders and water birds.
- 46C. Sand quarries east of Frankston. Sand ridges with rare heathland and heath swamp communities. The heathland attracts rare birds including emu wrens, trillers and woodswallows.
- 47C. East and south east of Langwarrin. Scrub covered sandhills containing heathlands, yarra gum and swamp paperbark.

PLAN 14



- 1c Black Hills
- 2c Djerriwarrh Creek
- 3c Exford Weir
- 4L Toolern Creek
- 5L Werribee River
- 6c Eynesbury Settlement
- 7L South Werribee
- 8L Emu Creek
- 9c Maribyrnong River & its tributaries (Deep & Jacksons Cks)
- 10c Mount Gellibrand & Greenvale
- 11c North of Greenvale Reservoir
- 12L Woodstock
- 13c Eden Park
- 14c South Morang Hills
- 15c Plenty River Valley
- 16L North & west of Whittlesea
- 17c Areas abutting Kinglake National Park
- 18L Kinglake East
- 19L North-eastern hill country
- 20L West of Warrandyte
- 21c South of Warrandyte
- 22L East of Warrandyte
- 23c West of Wonga Park
- 24c Bend of Islands
- 25c Yarra Fault Escarpment
- 26c Yering Floodplain
- 27c West of Healesville
- 28L North of Warramate Hills
- 29c Warramate Hills
- 30L Woori Yallock Valley
- 31c Kalorama
- 32c The Basin
- 33L South & west of Olinda
- 34c North of Cardinia Creek Reservoir
- 35L North of Lysterfield Hills
- 36c North-east of Lysterfield Hills
- 37c Northern face of Lysterfield Hills
- 38c Floodway of Corhanwarrubul Creek
- 39c Floodway of Dandenong Creek
- 40L North of Narre Warren
- 41L North of Berwick & Upper Beaconsfield
- 42c Upper Beaconsfield
- 43c Hallam Floodway
- 44c Floodway of Dandenong Creek
- 45c Seaford Swamp
- 46c Sand Quarries east of Frankston
- 47c East & south-east of Langwarrin

Melbourne Region
**Conservation and Landscape
 Zones**

