

Character Area 2.13

Lower Pyrenees

2.13 LOWER PYRENEES

This Character Area is typified by a visibly productive landscape. Vines, plantations and open paddocks used for grazing create a patchwork of colour and texture across the hilly terrain.

A combination of cleared paddocks, forested areas, cropping and plantations enhance this patchwork effect.

Built form generally sits adjacent to the roadside within larger properties. Timber manufacturing plants are often sited within the forest edge and therefore screened from view.

Key Features

- Numerous State Forests
- Plantations
- Mount Lonarch
- Views towards Mount Cole
- Productive landscape

Settlements

- Beaufort



Pine plantations and native roadside vegetation near Mount Lonarch



A patchwork of plantations on the slopes of Mount Lonarch



Native roadside vegetation allows glimpsed views towards pine plantations and built form

Figure 1 Lower Pyrenees Overview

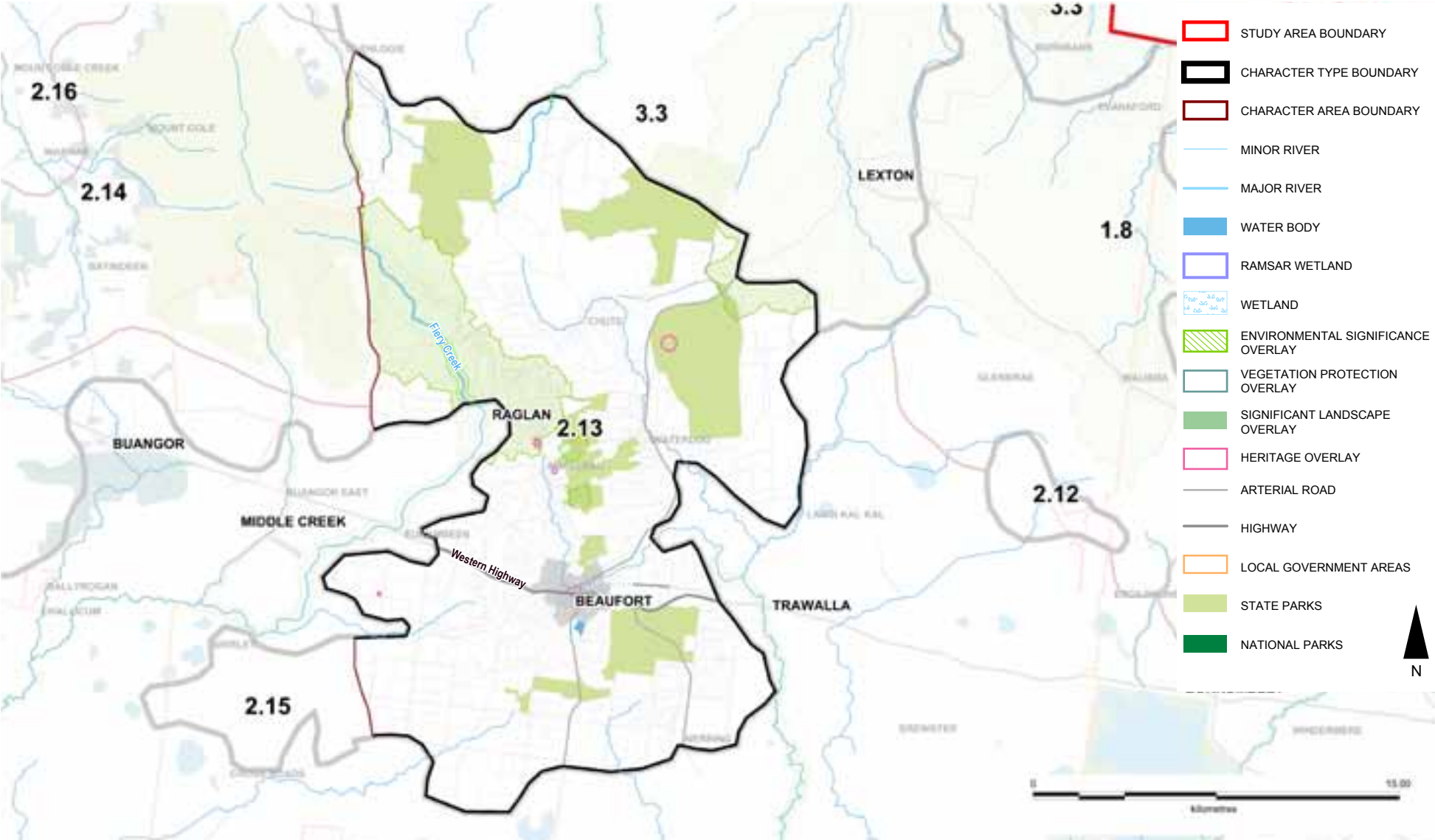


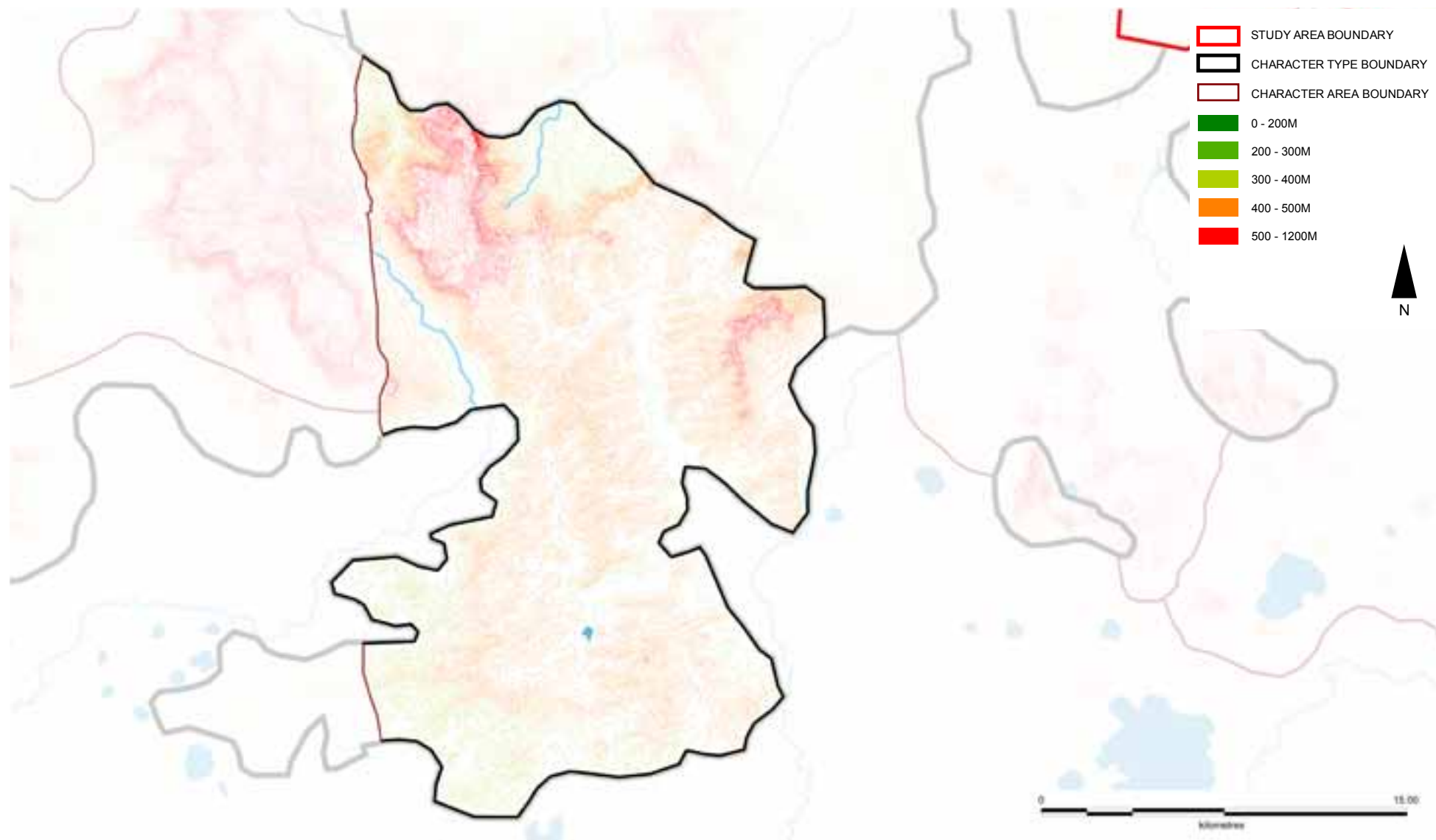
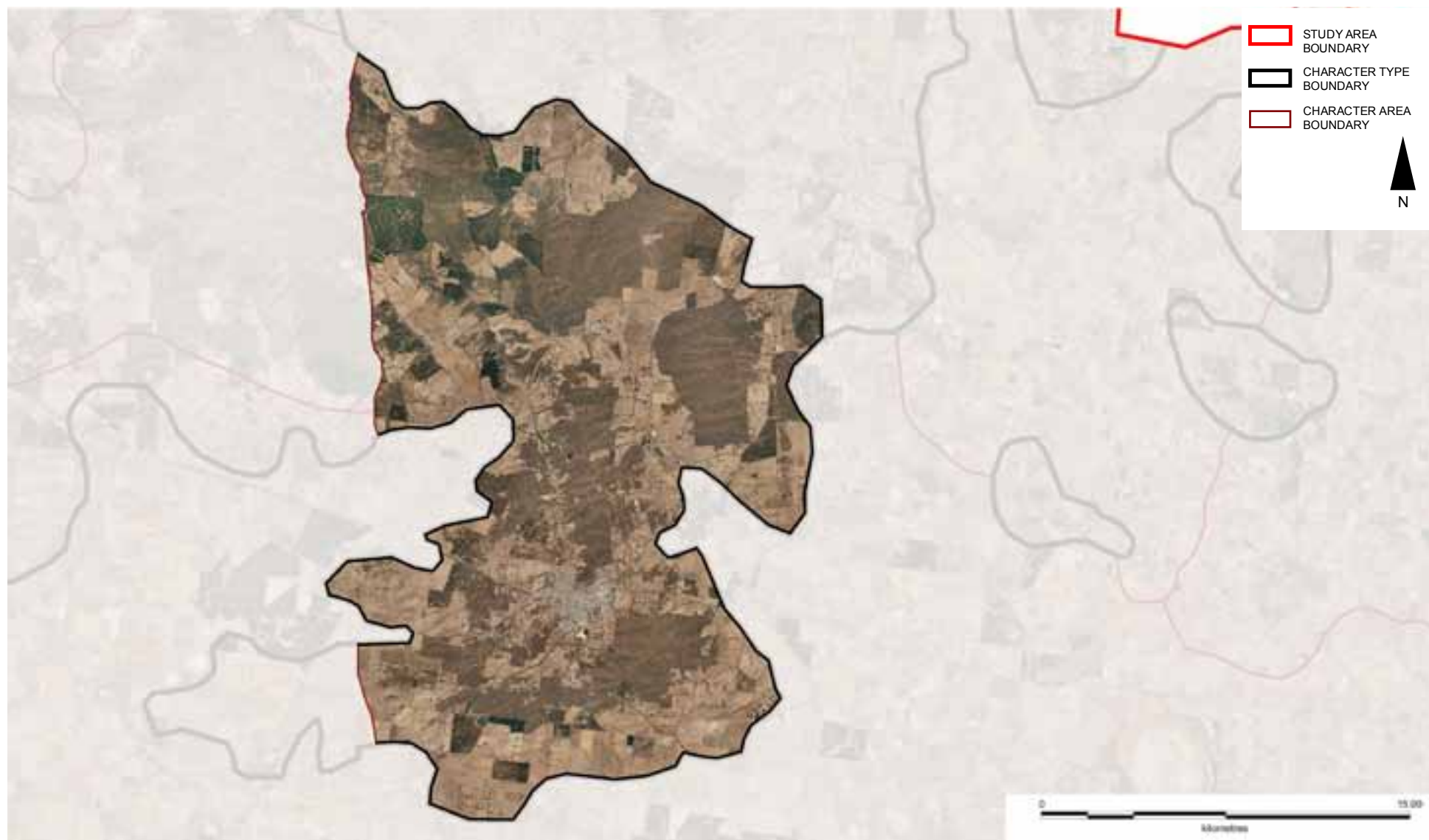
Figure 2 Lower Pyrenees Landform

Figure 3 Lower Pyrenees Aerial



PATTERN OF VIEWING

The main viewing corridors for this Character Area are:

- Western Highway
- Main Lead Road
- Raglan - Elmhurst Rd
- Chute - Waterloo Rd
- Beaufort - Lexton Rd
- Stockyard Hill Rd
- Ampitheatre Road

Views within this Character Area are consistently filtered by thick roadside vegetation.

Amphitheatre Road and the Beaufort-Lexton Road allow panoramic views of the patchwork of vegetation on Mount Lonarch.

Within the forested areas, views are tunnelled by tall trees on either side of the roadside. Occasionally where plantations have been harvested, views open out, revealing the hilly topography and scarring on the landscape.



Native roadside vegetation screens plantation views on the Beaufort - Lexton Road



Residential dwellings sit adjacent to roads and often have an element of productive land use



Tunnelled view on Musical Gully Road



A harvested plantation creates a scarred landscape in the Mount Lonarch State Forest



Views west towards Mount Lonarch from the Amphitheatre Road

LANDSCAPE VALUES

Environmental/Scientific

- Protected areas on the IUCN list
 - Ben Major Flora Reserve, Category IA (Strict Nature Reserve)
 - Main Lead, Raglan & Snowgums Bushland Reserves, Category IV (Habitat/Species Management Area)

LANDSCAPE PROTECTION & MANAGEMENT

Planning Scheme Policies & Controls

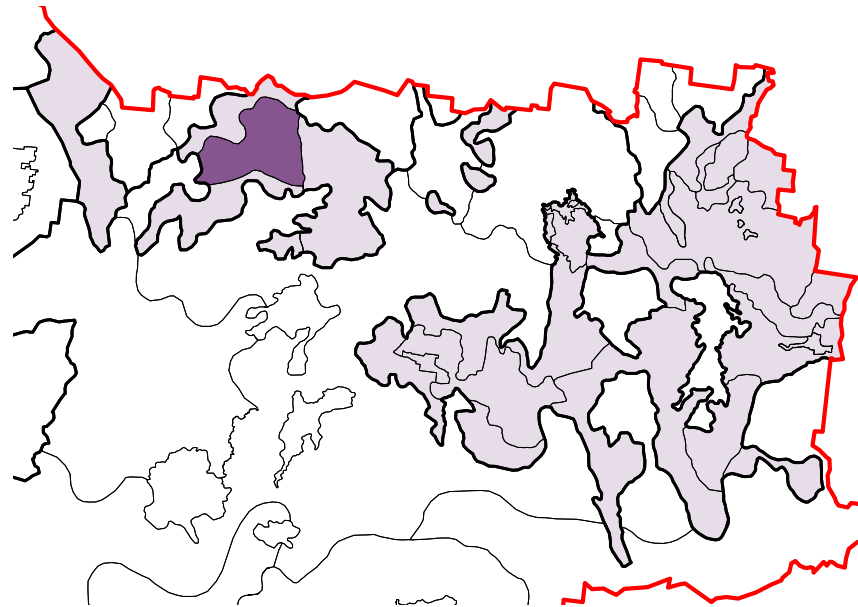
Only the Pyrenees Planning Scheme applies to this Character Area.

Key Zones

- FZ
- PCRZ
- RLZ at Beaufort, Trawalla
- RCZ
- PUZ

Key Overlays

- ESO1: Designated Water Supply Areas
- ESO2: Watercourse Protection
- HO
 - HO21: Belmont (Victorian Heritage Register)
 - HO22: Tipperary Gold Puddling Site (Victorian Heritage Register)
 - HO47: Eurambeen House & Woolshed (Local Significance)
 - HO48: Baxter Lead Alluvial Gold Mining Precinct (Victorian Heritage Register)
- VPO1: Roadside Grassland Protection & Conservation
- WMO / BMO
- DDO1: Potentially Flood-Prone Areas
- RO21: Raglan Environs
- RO22: Waterloo Environs
- RO27: Beaufort Environs



Character Area 2.14

Southern Pyrenees Rises

2.14 SOUTHERN PYRENEES RISES

The Pyrenees sit within the south western reaches of the Great Dividing Range and feature rugged granite peaks and sloping forested ranges with vineyards nestled in the foothills. This Character Area is dominated by the dramatic silhouettes of Mount Langi Ghiran, Mount Cole and Mount Buangor which sit at the southern point of these ranges.

The upper slopes of the mountains are contained within State Forest and flora and fauna reserves.

Key Features

- Mount Cole State Forest
- Langi Ghiran State Park
- Mount Buangor
- River Red Gums
- Vineyards
- Undeveloped character

Settlements

- Warrak



Mount Cole on the horizon with River Red Gums dotted throughout the foreground



The rugged peaks of Langi Ghiran with vineyards on the gently sloping lower elevations



The dramatic granite faces of Mount Cole

Figure 1 Southern Pyrenees Rises Overview

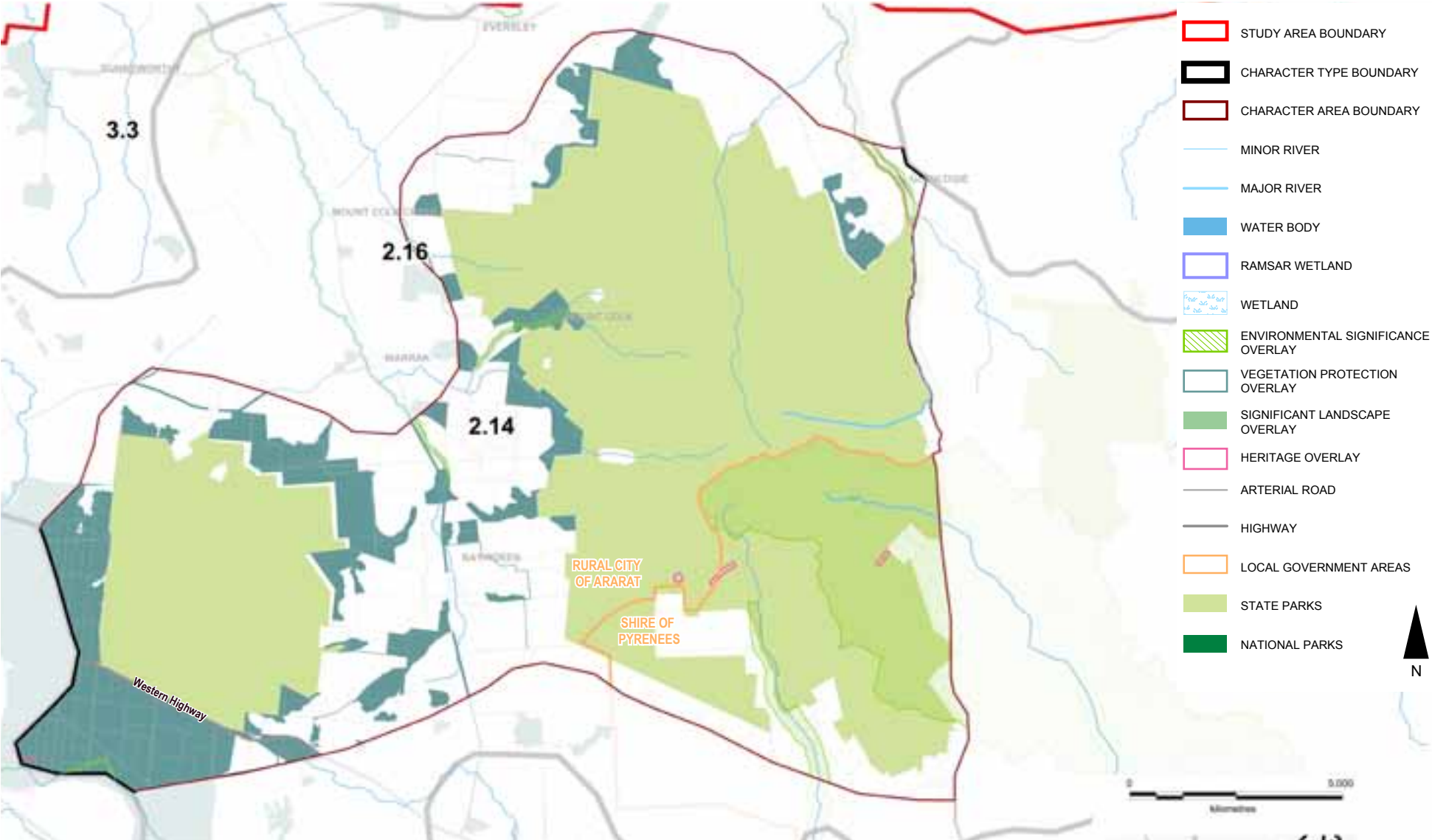


Figure 2 Southern Pyrenees Rises Landform

Figure 3 Southern Pyrenees Rises Aerial



PATTERN OF VIEWING

The main viewing corridors for this Character Area are:

- Western Highway
- Buangor-Ben Nevis Road
- Main Mount Cole Road
- Vine Road

Views of Langi Ghiran are generally filtered by thick roadside vegetation, however open vistas are available from some minor roads lacking roadside vegetation, such as Vine Road.

Within the State Forests views are narrow, constricted by tall trees.

Panoramic views over the area are available from the summit of Langi Ghiran and Mount Buangor.



Roadside vegetation screens views on the Buangor - Ben Nevis Road



Looking east from Langi Ghiran towards Mount Buangor



The impressive silhouette of Langi Ghiran, as seen from Vine Road



Looking north on the Chalicum Road, Mount Langi Ghiran looms behind the lower hills dominated by the Chalicum Hills Wind Farm and Mount Buangor sits to the east. Pine shelterbelt blocks views

LANDSCAPE VALUES

Historic

- Burrumbeep Aboriginal Reserve, Mount Cole, set aside in 1841, now demolished/removed
- Langi Ghiran, named 'Mount Mistake' by Major Thomas Mitchell on his 1836 'Australia Felix' expedition
- Langi Ghiran State Park
 - granite outcrops
 - eucalypt woodlands
 - unique Aboriginal rock art site
 - regionally significant Langi Ghiran Reservoir, identified by DSE
 - locally significant stone water race, identified by DSE

Environmental/Scientific

- Langi Ghiran & Mount Buangor State Parks
 - protected area on the IUCN list, Category
 - protected by National Parks Act 1975, Schedule 2B
- Significant vegetation, protected by Ararat VPO, including:
 - scattered Red Gums, an important habitat & links

LANDSCAPE PROTECTION & MANAGEMENT

Planning Scheme Policies & Controls

This Character Area is subject to the Ararat and Pyrenees Planning Schemes.

Key Zones

- FZ
- PCRZ
- RCZ (Pyrenees only)

Key Overlays

- Ararat ESO2: Watercourses, Waterbody & Wetland Protection Areas
- Ararat HO116, HO118
- Pyrenees HO50, HO51
- Ararat VPO1: Significant & Remnant Vegetation Areas
- Ararat VPO2: Roadside Vegetation Protection Areas
- Ararat WMO / BMO

