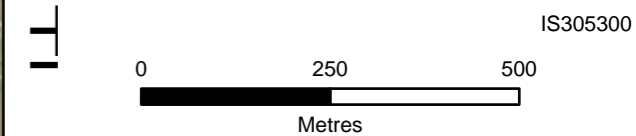
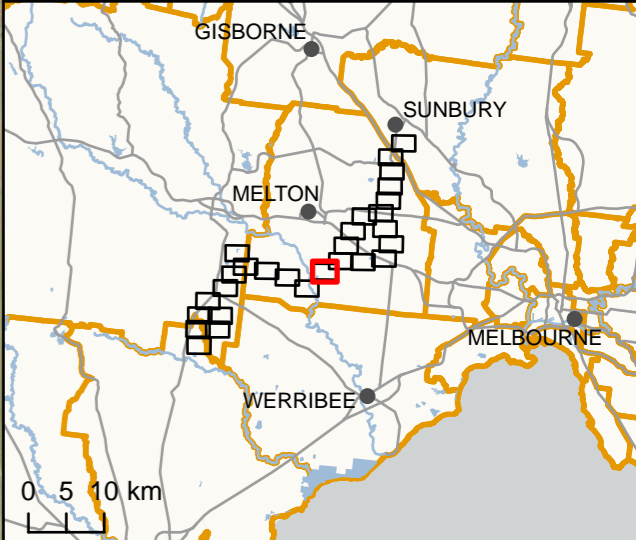


- Legend**
- ⋯ S2M Interconnector - Shared alignment
  - S2M Interconnector Indicative Assessment Area (Option A)
  - S2M Interconnector Indicative Assessment Area (Option B)
  - DELWP Current Wetlands Inventory
  - AWRC River Basins
  - CMA boundaries
  - Watercourse
  - Waterbody
  - Western Water Recycled Water Plants
  - LGA Boundary



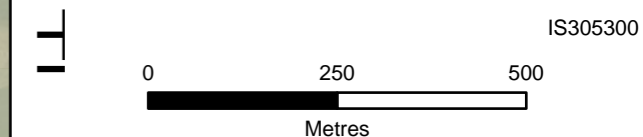
**DATA SOURCES**  
 © Commonwealth of Australia (Geoscience Australia) 2006 Geodata Topo 250k Series 3; Vicmap Data © State of Victoria 2021; CH2M Beca 2021. Aerometrex Metromap 2021; ESRI Basemap 2021

**COPYRIGHT:** The concepts and information contained in this document are the copyright of Jacobs. Use or copying of the document in whole or in part without the written permission of Jacobs constitutes an infringement of copyright. Jacobs does not warrant that this document is definitive nor free of error and does not accept liability for any loss caused or arising from reliance upon information provided herein.



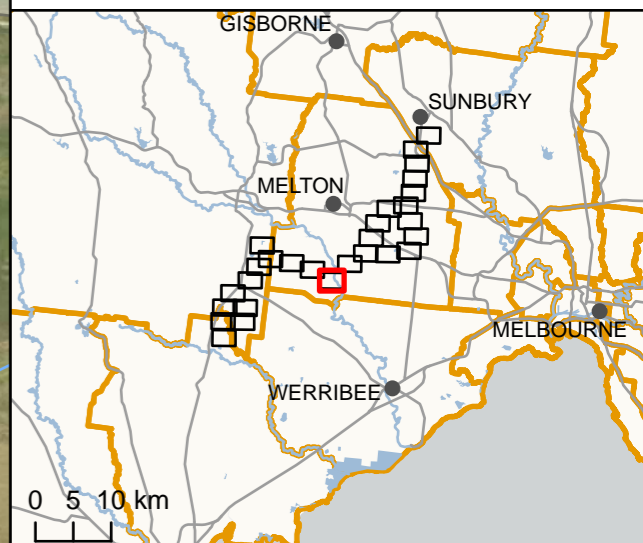


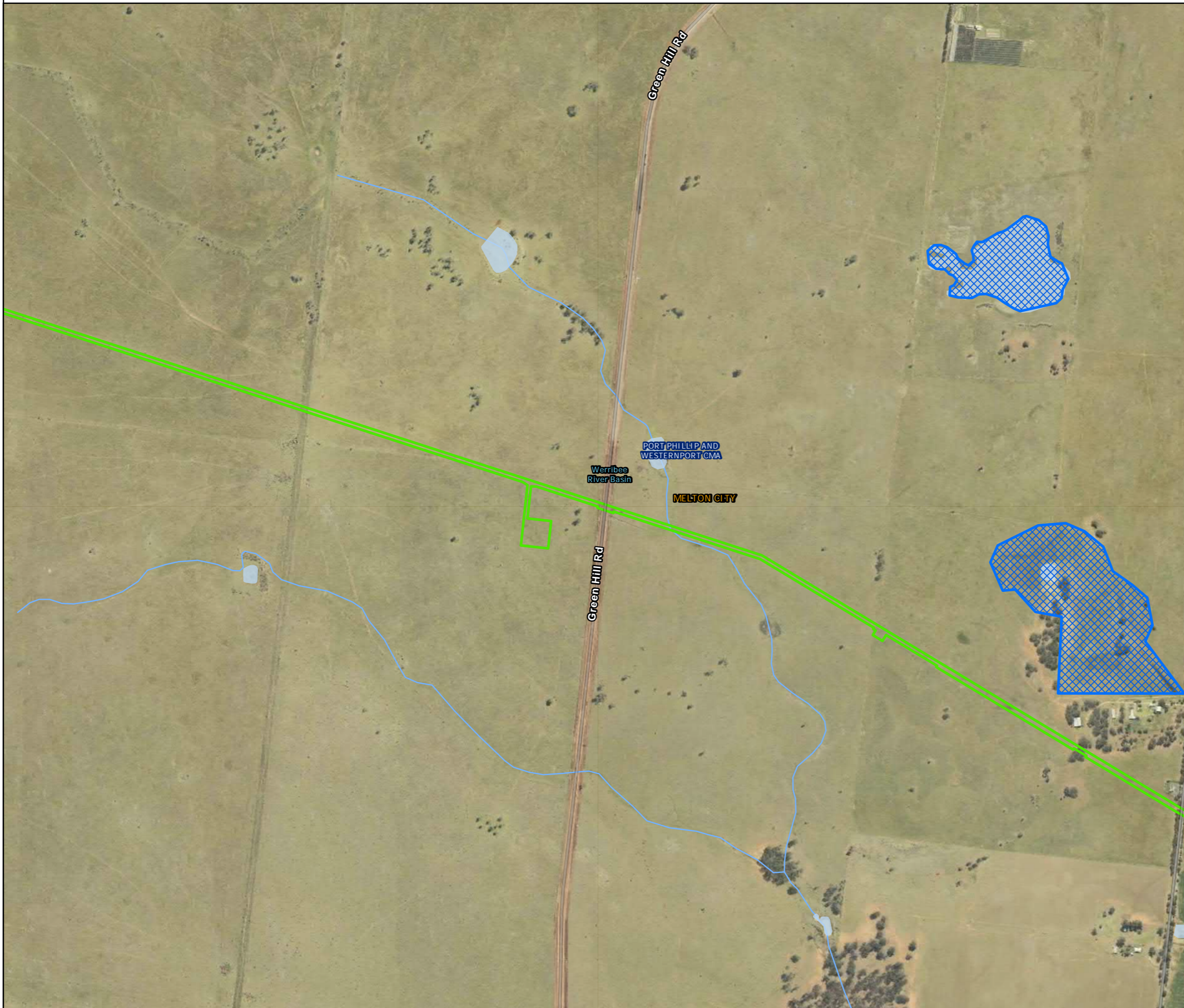
- Legend
- M2BM Interconnector Construction Area
  - DELWP Current Wetlands Inventory
  - AWRC River Basins
  - CMA boundaries
  - Watercourse
  - Waterbody
  - Western Water Recycled Water Plants
  - LGA Boundary



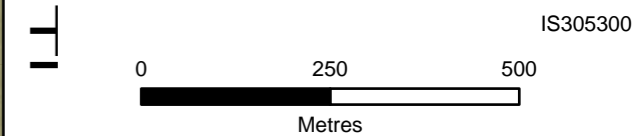
DATA SOURCES  
 © Commonwealth of Australia (Geoscience Australia) 2006 Geodata Topo 250k Series 3; Vicmap Data © State of Victoria 2021; CH2M Beca 2021. Aerometrex Metromap 2021; ESRI Basemap 2021

COPYRIGHT: The concepts and information contained in this document are the copyright of Jacobs. Use or copying of the document in whole or in part without the written permission of Jacobs constitutes an infringement of copyright. Jacobs does not warrant that this document is definitive nor free of error and does not accept liability for any loss caused or arising from reliance upon information provided herein.



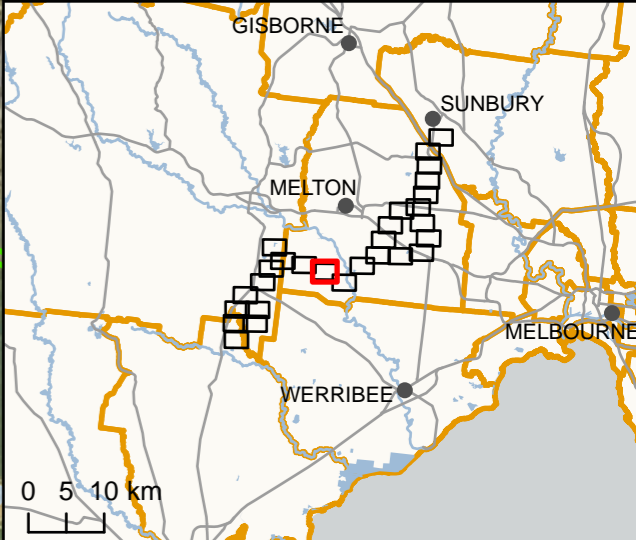


- Legend**
- M2BM Interconnector Construction Area
  - DELWP Current Wetlands Inventory
  - AWRC River Basins
  - CMA boundaries
  - Watercourse
  - Waterbody
  - LGA Boundary



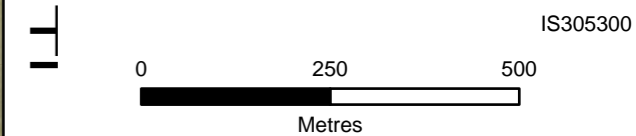
**DATA SOURCES**  
 © Commonwealth of Australia (Geoscience Australia) 2006 Geodata Topo 250k Series 3; Vicmap Data © State of Victoria 2021; CH2M Beca 2021. Aerometrex Metromap 2021; ESRI Basemap 2021

**COPYRIGHT:** The concepts and information contained in this document are the copyright of Jacobs. Use or copying of the document in whole or in part without the written permission of Jacobs constitutes an infringement of copyright. Jacobs does not warrant that this document is definitive nor free of error and does not accept liability for any loss caused or arising from reliance upon information provided herein.



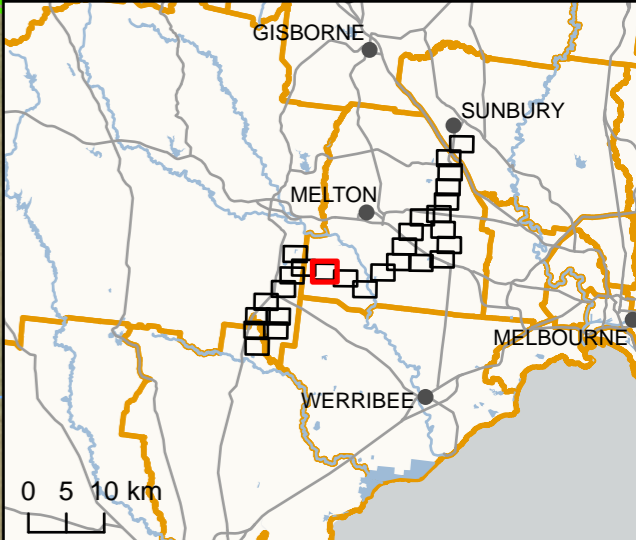


- Legend
- M2BM Interconnector Construction Area
  - AWRC River Basins
  - CMA boundaries
  - Watercourse
  - Waterbody
  - LGA Boundary



DATA SOURCES  
 © Commonwealth of Australia (Geoscience Australia) 2006 Geodata Topo 250k Series 3; Vicmap Data © State of Victoria 2021; CH2M Beca 2021. Aerometrex Metromap 2021; ESRI Basemap 2021

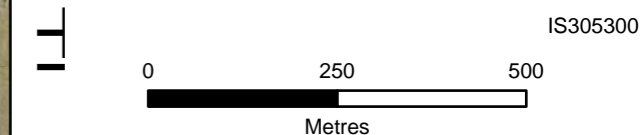
COPYRIGHT: The concepts and information contained in this document are the copyright of Jacobs. Use or copying of the document in whole or in part without the written permission of Jacobs constitutes an infringement of copyright. Jacobs does not warrant that this document is definitive nor free of error and does not accept liability for any loss caused or arising from reliance upon information provided herein.





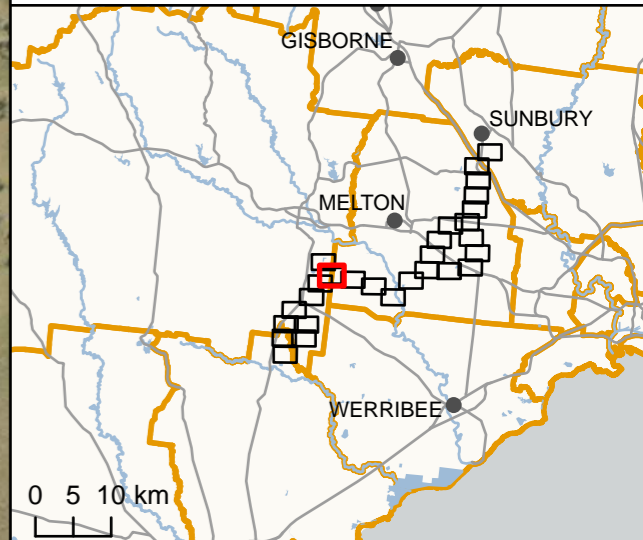
Legend

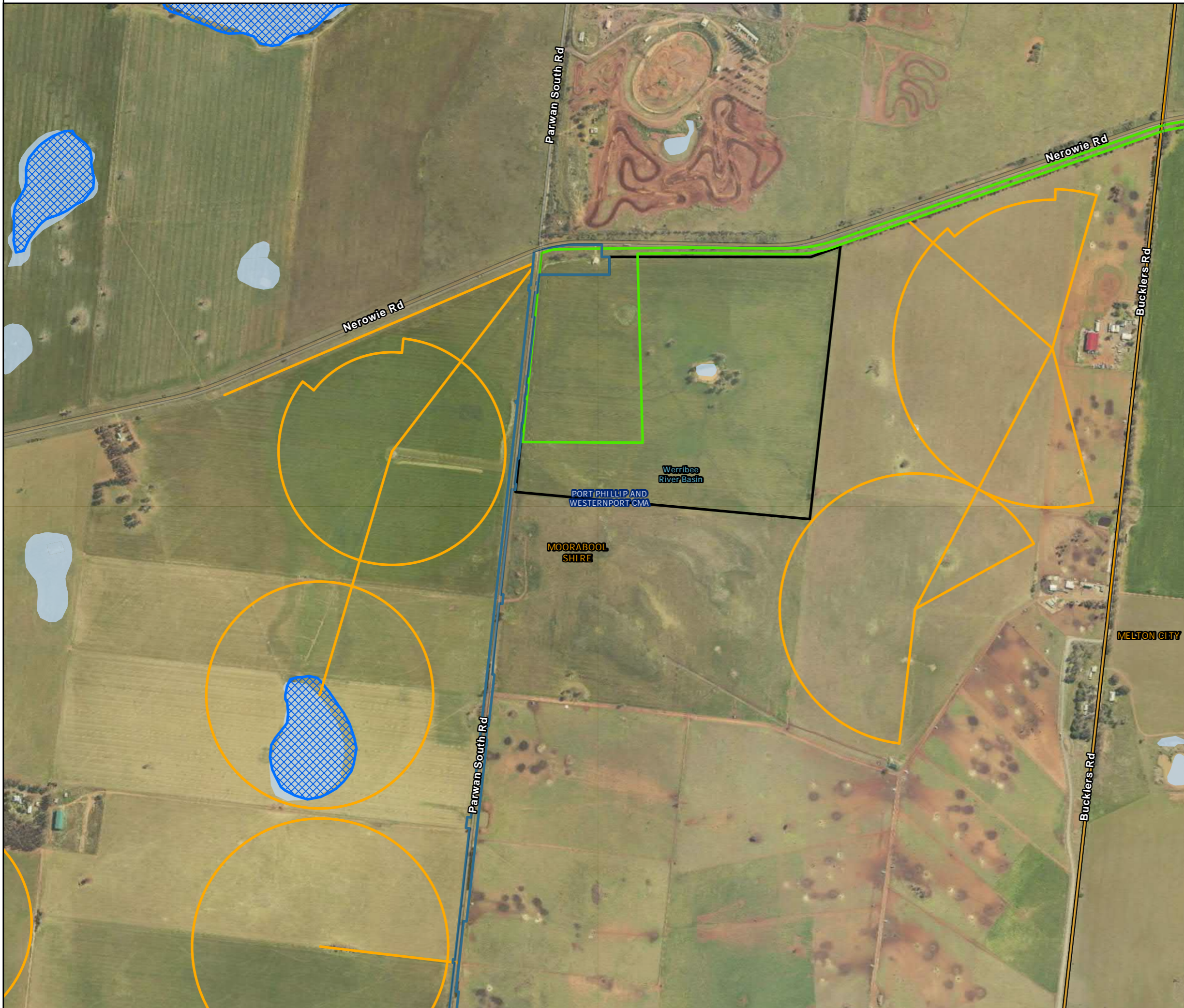
- PBID Supply Network Construction Area
- M2BM Interconnector Construction Area
- PBID Foundation Recycled Water Irrigation Areas
- AWRC River Basins
- CMA boundaries
- Waterbody
- Parwan Recycled Water Storage Assessment Area
- Western Water Recycled Water Plants
- LGA Boundary



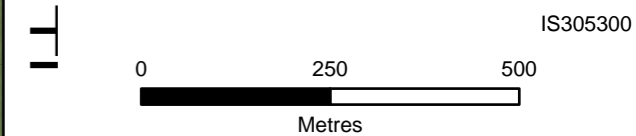
DATA SOURCES  
 © Commonwealth of Australia (Geoscience Australia) 2006 Geodata Topo 250k Series 3; Vicmap Data © State of Victoria 2021; CH2M Beca 2021. Aerometrex Metromap 2021; ESRI Basemap 2021

COPYRIGHT: The concepts and information contained in this document are the copyright of Jacobs. Use or copying of the document in whole or in part without the written permission of Jacobs constitutes an infringement of copyright. Jacobs does not warrant that this document is definitive nor free of error and does not accept liability for any loss caused or arising from reliance upon information provided herein.





- Legend**
- PBID Supply Network Construction Area
  - M2BM Interconnector Construction Area
  - PBID Foundation Recycled Water Irrigation Areas
  - ▨ DELWP Current Wetlands Inventory
  - ▭ AWRC River Basins
  - ▭ CMA boundaries
  - ▭ Waterbody
  - ▭ Parwan Recycled Water Storage Assessment Area
  - ▭ LGA Boundary







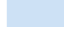



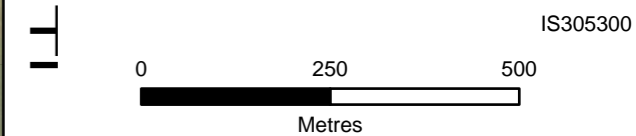
**DATA SOURCES**  
 © Commonwealth of Australia (Geoscience Australia) 2006 Geodata Topo 250k Series 3; Vicmap Data © State of Victoria 2021; CH2M Beca 2021. Aerometrex Metromap 2021; ESRI Basemap 2021

**COPYRIGHT:** The concepts and information contained in this document are the copyright of Jacobs. Use or copying of the document in whole or in part without the written permission of Jacobs constitutes an infringement of copyright. Jacobs does not warrant that this document is definitive nor free of error and does not accept liability for any loss caused or arising from reliance upon information provided herein.



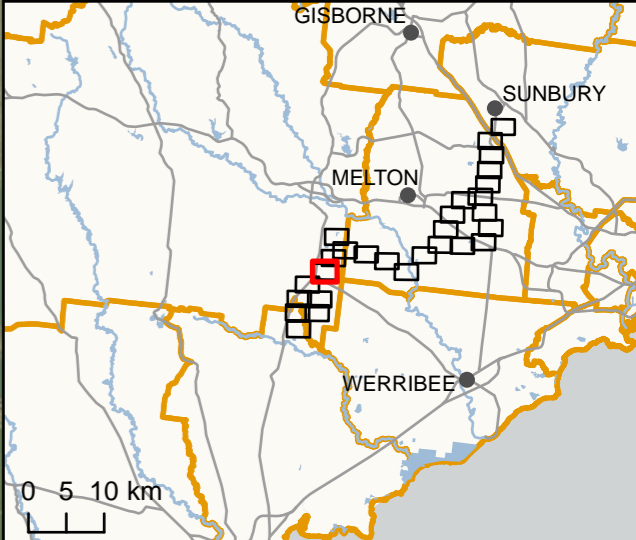


- Legend**
-  PBID Supply Network Construction Area
  -  PBID Foundation Recycled Water Irrigation Areas
  -  DELWP Current Wetlands Inventory
  -  AWRC River Basins
  -  CMA boundaries
  -  Watercourse
  -  Waterbody
  -  LGA Boundary



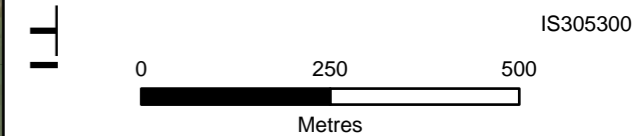
**DATA SOURCES**  
 © Commonwealth of Australia (Geoscience Australia) 2006 Geodata Topo 250k Series 3; Vicmap Data © State of Victoria 2021; CH2M Beca 2021. Aerometrex Metromap 2021; ESRI Basemap 2021

**COPYRIGHT:** The concepts and information contained in this document are the copyright of Jacobs. Use or copying of the document in whole or in part without the written permission of Jacobs constitutes an infringement of copyright. Jacobs does not warrant that this document is definitive nor free of error and does not accept liability for any loss caused or arising from reliance upon information provided herein.





- Legend**
- PBID Supply Network Construction Area
  - PBID Foundation Recycled Water Irrigation Areas
  - ▨ DELWP Current Wetlands Inventory
  - ▭ AWRC River Basins
  - ▭ CMA boundaries
  - Watercourse
  - ▭ Waterbody
  - ▭ LGA Boundary

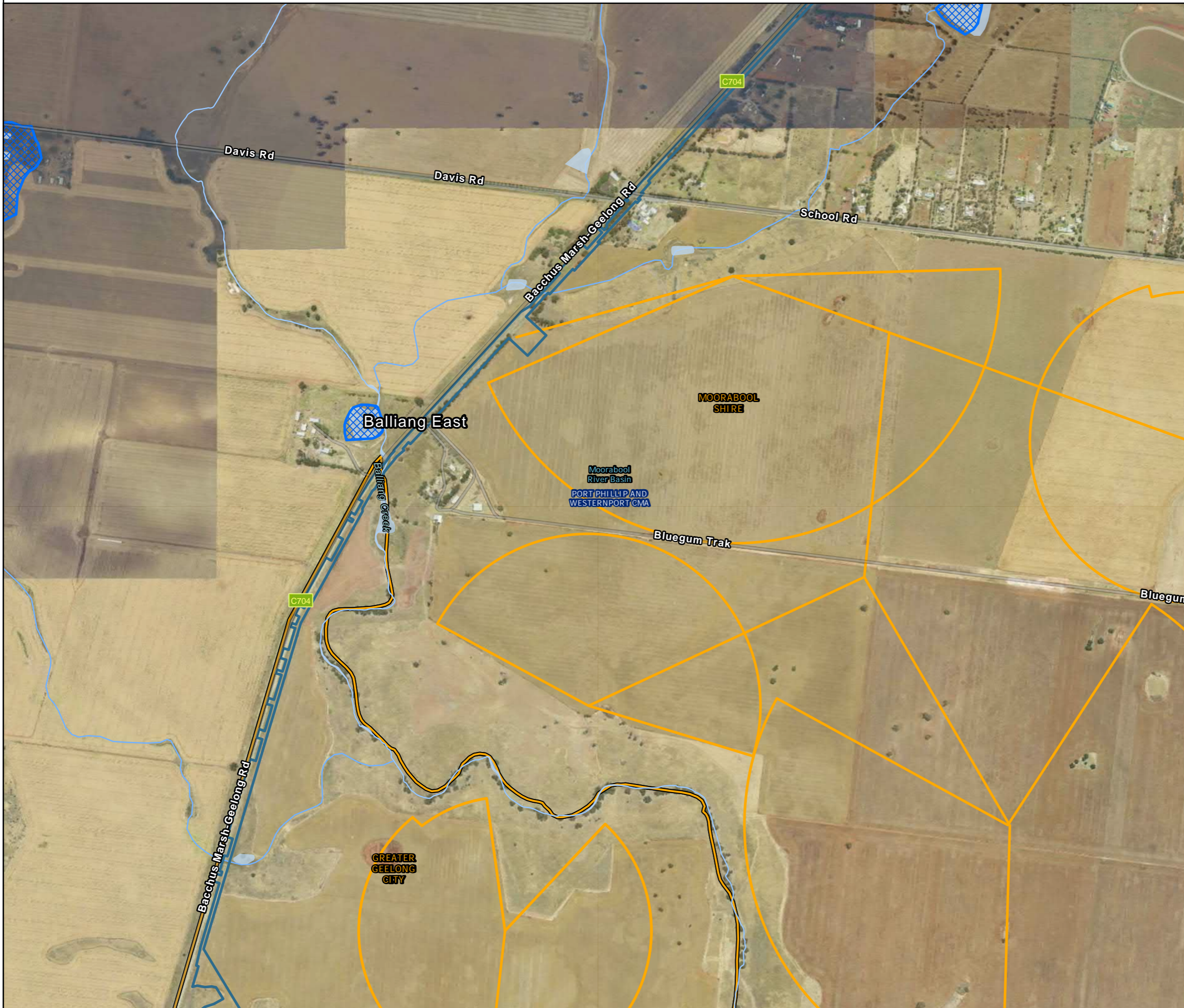


**DATA SOURCES**  
 © Commonwealth of Australia (Geoscience Australia) 2006 Geodata Topo 250k Series 3; Vicmap Data © State of Victoria 2021; CH2M Beca 2021. Aerometrex Metromap 2021; ESRI Basemap 2021

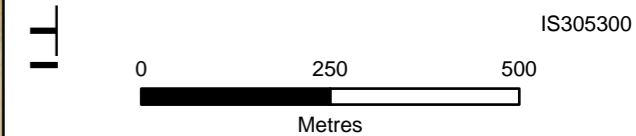
**COPYRIGHT:** The concepts and information contained in this document are the copyright of Jacobs. Use or copying of the document in whole or in part without the written permission of Jacobs constitutes an infringement of copyright. Jacobs does not warrant that this document is definitive nor free of error and does not accept liability for any loss caused or arising from reliance upon information provided herein.





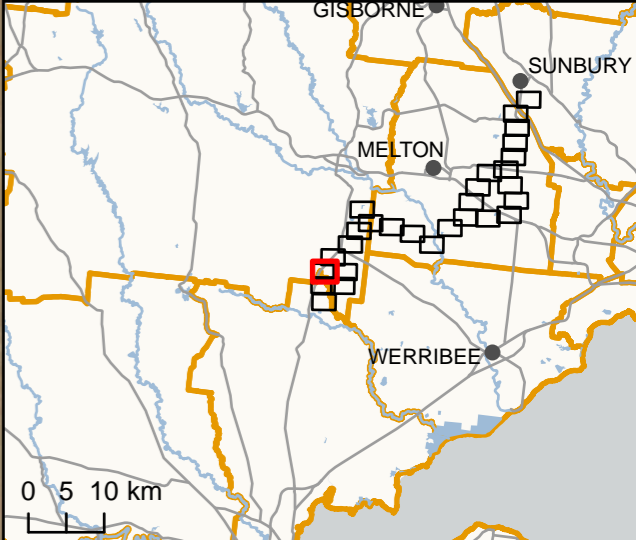


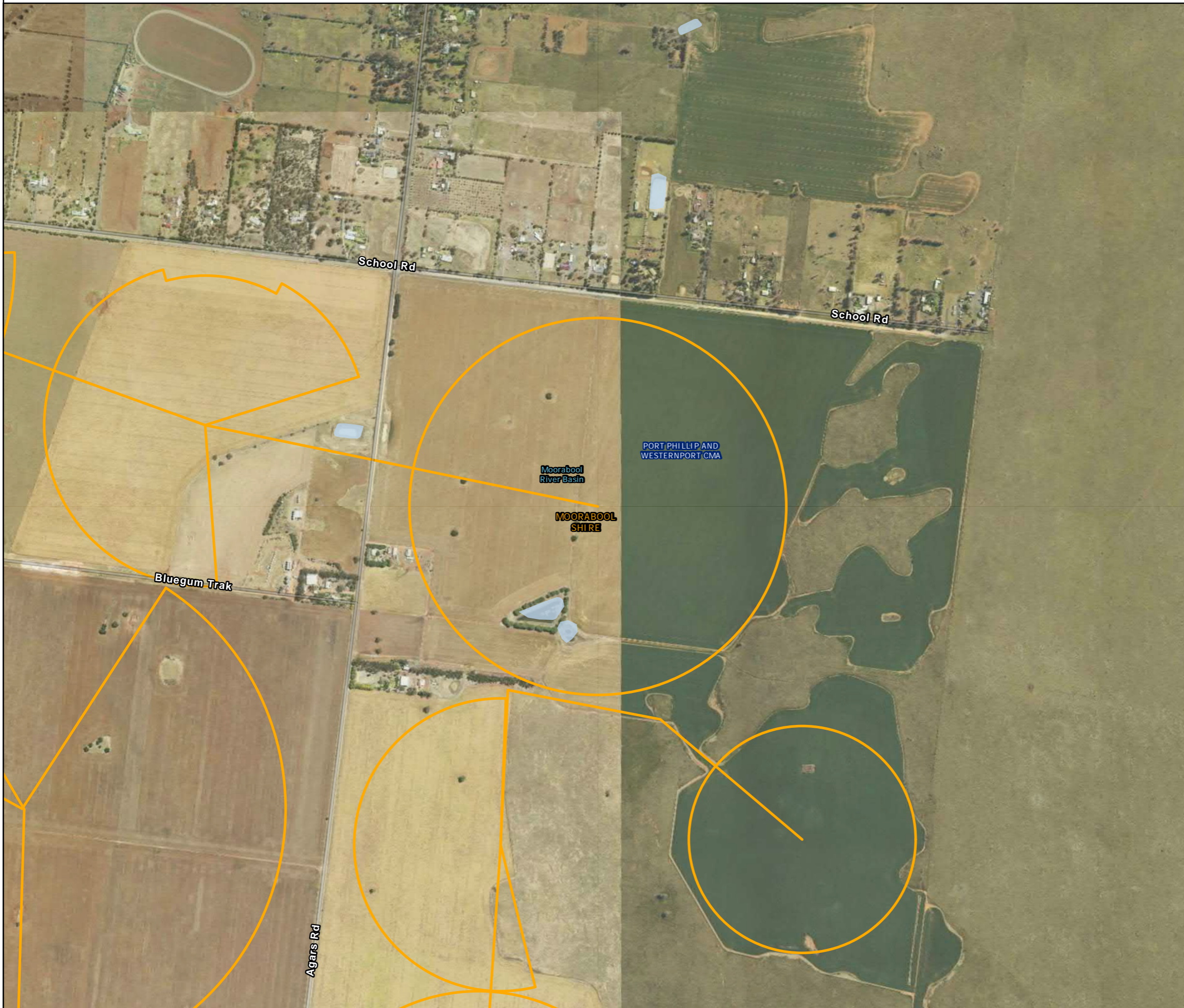
- Legend**
- PBID Supply Network Construction Area
  - PBID Foundation Recycled Water Irrigation Areas
  - ▨ DELWP Current Wetlands Inventory
  - AWRC River Basins
  - CMA boundaries
  - Watercourse
  - Waterbody
  - LGA Boundary




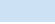
**DATA SOURCES**  
 © Commonwealth of Australia (Geoscience Australia) 2006 Geodata Topo 250k Series 3; Vicmap Data © State of Victoria 2021; CH2M Beca 2021. Aerometrex Metromap 2021; ESRI Basemap 2021

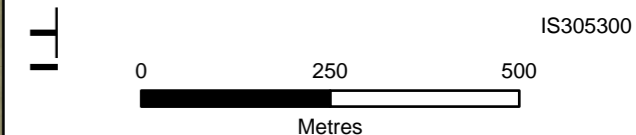
**COPYRIGHT:** The concepts and information contained in this document are the copyright of Jacobs. Use or copying of the document in whole or in part without the written permission of Jacobs constitutes an infringement of copyright. Jacobs does not warrant that this document is definitive nor free of error and does not accept liability for any loss caused or arising from reliance upon information provided herein.





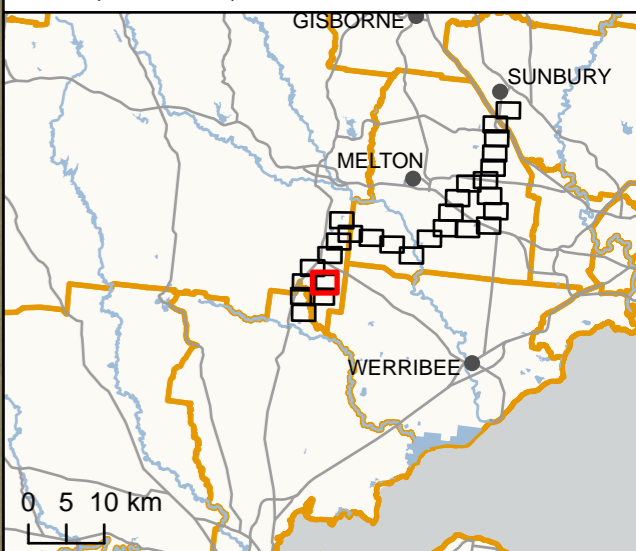
Legend

-  PBID Foundation Recycled Water Irrigation Areas
-  AWRC River Basins
-  CMA boundaries
-  Waterbody
-  LGA Boundary



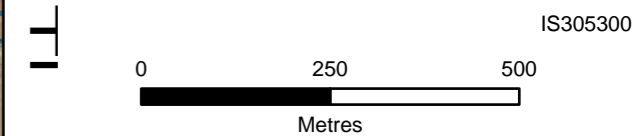
DATA SOURCES  
 © Commonwealth of Australia (Geoscience Australia) 2006 Geodata Topo 250k Series 3; Vicmap Data © State of Victoria 2021; CH2M Beca 2021. Aerometrex Metromap 2021; ESRI Basemap 2021

COPYRIGHT: The concepts and information contained in this document are the copyright of Jacobs. Use or copying of the document in whole or in part without the written permission of Jacobs constitutes an infringement of copyright. Jacobs does not warrant that this document is definitive nor free of error and does not accept liability for any loss caused or arising from reliance upon information provided herein.





- Legend
- PBID Supply Network Construction Area
  - PBID Foundation Recycled Water Irrigation Areas
  - AWRC River Basins
  - CMA boundaries
  - Watercourse
  - Waterbody
  - LGA Boundary







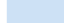



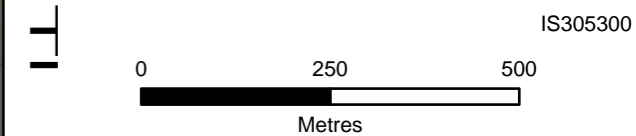
DATA SOURCES  
 © Commonwealth of Australia (Geoscience Australia) 2006 Geodata Topo 250k Series 3; Vicmap Data © State of Victoria 2021; CH2M Beca 2021. Aerometrex Metromap 2021; ESRI Basemap 2021

COPYRIGHT: The concepts and information contained in this document are the copyright of Jacobs. Use or copying of the document in whole or in part without the written permission of Jacobs constitutes an infringement of copyright. Jacobs does not warrant that this document is definitive nor free of error and does not accept liability for any loss caused or arising from reliance upon information provided herein.





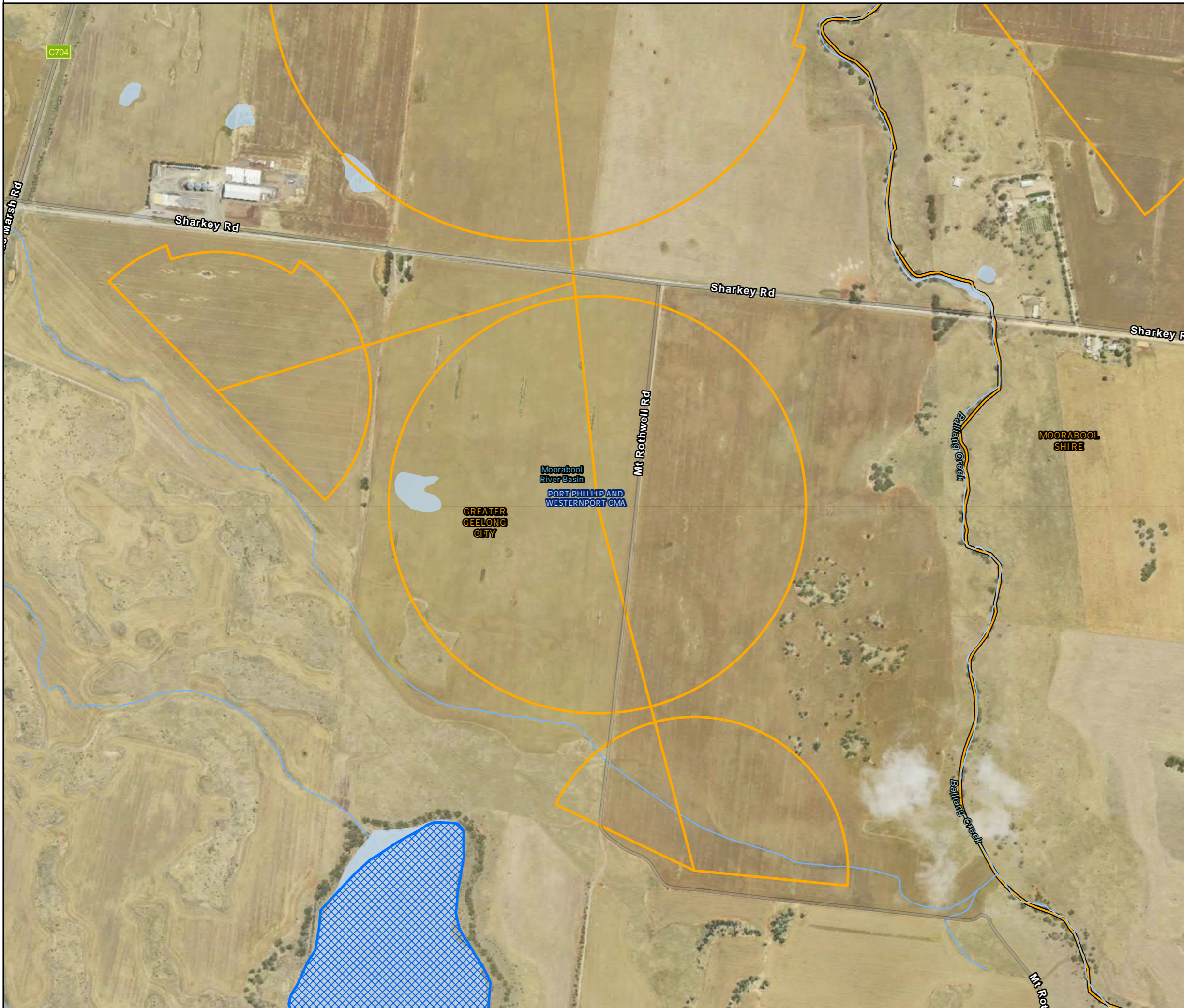
- Legend**
-  PBID Supply Network Construction Area
  -  PBID Foundation Recycled Water Irrigation Areas
  -  DELWP Current Wetlands Inventory
  -  AWRC River Basins
  -  CMA boundaries
  -  Watercourse
  -  Waterbody
  -  LGA Boundary



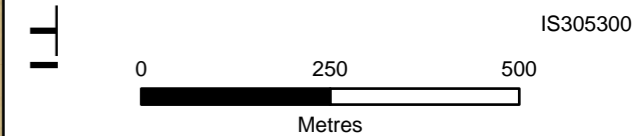
**DATA SOURCES**  
 © Commonwealth of Australia (Geoscience Australia) 2006 Geodata Topo 250k Series 3; Vicmap Data © State of Victoria 2021; CH2M Beca 2021. Aerometrex Metromap 2021; ESRI Basemap 2021

**COPYRIGHT:** The concepts and information contained in this document are the copyright of Jacobs. Use or copying of the document in whole or in part without the written permission of Jacobs constitutes an infringement of copyright. Jacobs does not warrant that this document is definitive nor free of error and does not accept liability for any loss caused or arising from reliance upon information provided herein.





- Legend
- PBID Foundation Recycled Water Irrigation Areas
  - DELWP Current Wetlands Inventory
  - AWRC River Basins
  - CMA boundaries
  - Watercourse
  - Waterbody
  - LGA Boundary





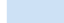




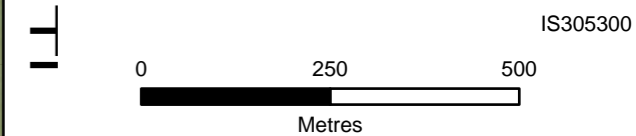
DATA SOURCES  
 © Commonwealth of Australia (Geoscience Australia) 2006 Geodata Topo 250k Series 3; Vicmap Data © State of Victoria 2021; CH2M Beca 2021. Aerometrex Metromap 2021; ESRI Basemap 2021

COPYRIGHT: The concepts and information contained in this document are the copyright of Jacobs. Use or copying of the document in whole or in part without the written permission of Jacobs constitutes an infringement of copyright. Jacobs does not warrant that this document is definitive nor free of error and does not accept liability for any loss caused or arising from reliance upon information provided herein.





- Legend**
-  Bacchus Marsh RWP Pump Station Assessment Area
  -  DELWP Current Wetlands Inventory
  -  AWRC River Basins
  -  CMA boundaries
  -  Waterbody
  -  Western Water Recycled Water Plants
  -  LGA Boundary



**DATA SOURCES**  
 © Commonwealth of Australia (Geoscience Australia) 2006 Geodata Topo 250k Series 3; Vicmap Data © State of Victoria 2021; CH2M Beca 2021. Aerometrex Metromap 2021; ESRI Basemap 2021

**COPYRIGHT:** The concepts and information contained in this document are the copyright of Jacobs. Use or copying of the document in whole or in part without the written permission of Jacobs constitutes an infringement of copyright. Jacobs does not warrant that this document is definitive nor free of error and does not accept liability for any loss caused or arising from reliance upon information provided herein.

