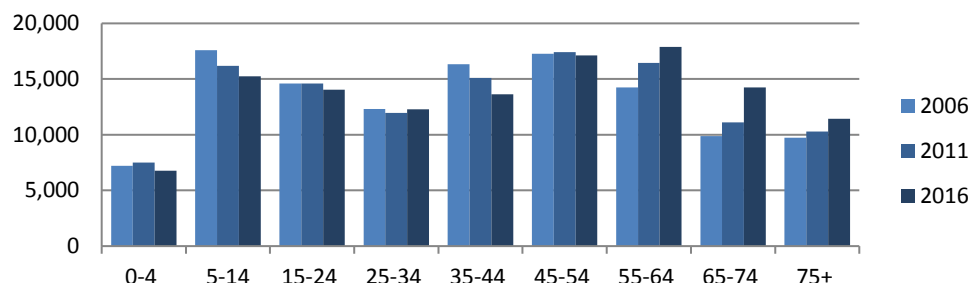


Warrnambool and South West (SA4)

Count of persons by Usual Residence	Total 2006	119,153	Period	5-year change	Annual rate
	Total 2011	120,659	2006-11	1,506 increase	0.3% p.a.
	Total 2016	122,701	2011-16	2,042 increase	0.3% p.a.

Age Structure, 2006 to 2016

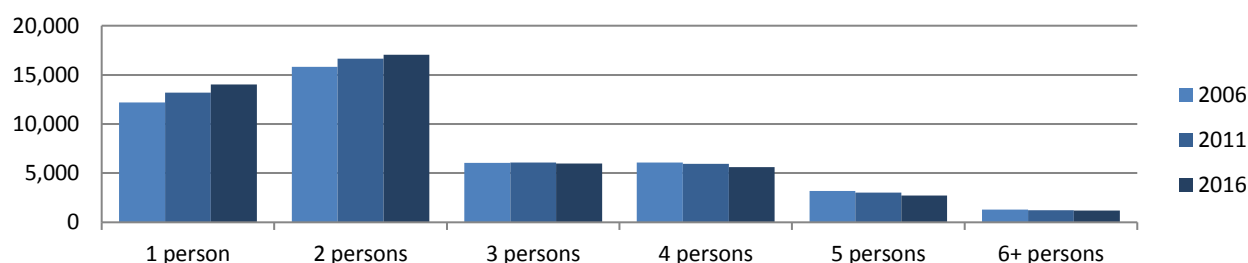


Proportions 2016

0-4 yrs	5.5%
5-14 yrs	12.4%
15-24 yrs	11.4%
25-34 yrs	10.0%
35-44 yrs	11.1%
45-54 yrs	14.0%
55-64 yrs	14.6%
65-74 yrs	11.6%
75+ yrs	9.3%

	2006	2011	2016
Median population age in years	40	41	44
Proportion indigenous persons	1.0%	1.3%	1.5%
Proportion Australian citizens	92.4%	92.0%	89.2%
Proportion born in Australia	88.0%	88.0%	83.8%
Proportion born elsewhere	6.3%	7.1%	7.7%
Proportion speaking English only at home	94.5%	93.7%	89.7%
Proportion speaking other language at home	1.8%	2.4%	3.1%

Number of households by number of persons usually resident, 2006 to 2016



	2006	2011	2016
Average household size	2.5	2.4	2.4
Average persons per bedroom	0.8	0.8	0.8
Proportion of households with children	39.1%	37.1%	34.1%
Proportion couple-only households	27.1%	27.9%	27.4%
Proportion lone person households	26.3%	27.5%	28.0%
Proportion group households	2.8%	2.7%	2.7%
Proportion of dwellings rented	22.8%	23.9%	23.2%
Proportion owned with mortgage	41.7%	40.0%	37.9%
Proportion owned outright	29.2%	29.8%	29.3%