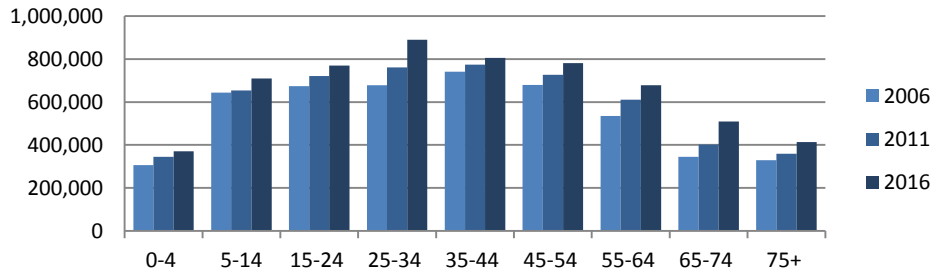


Victoria

Count of persons by Usual Residence

	Total 2006	4,932,422	Period	5-year change	Annual rate
	Total 2011	5,354,039	2006-11	421,617 increase	1.7% p.a.
	Total 2016	5,926,624	2011-16	572,585 increase	2.1% p.a.

Age Structure, 2006 to 2016

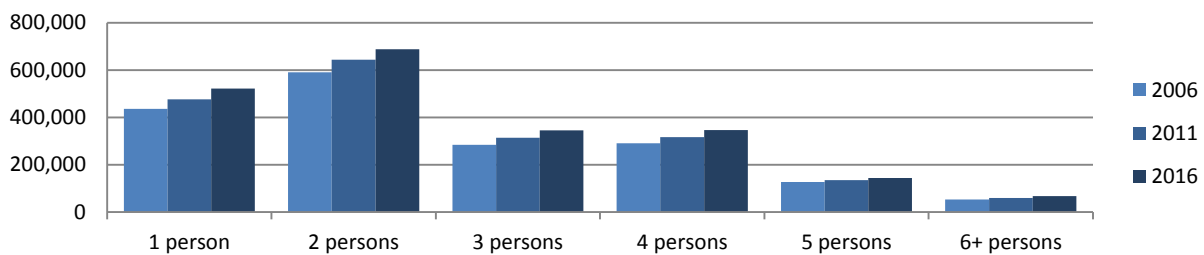


Proportions 2016

0-4 yrs	6.3%
5-14 yrs	12.0%
15-24 yrs	13.0%
25-34 yrs	15.0%
35-44 yrs	13.6%
45-54 yrs	13.2%
55-64 yrs	11.4%
65-74 yrs	8.6%
75+ yrs	7.0%

	2006	2011	2016
Median population age in years	37	37	37
Proportion indigenous persons	0.6%	0.7%	0.8%
Proportion Australian citizens	86.3%	85.0%	81.6%
Proportion born in Australia	69.6%	68.6%	64.9%
Proportion born elsewhere	23.8%	26.2%	28.4%
Proportion speaking English only at home	74.4%	72.4%	67.9%
Proportion speaking other language at home	20.4%	23.1%	26.0%

Number of households by number of persons usually resident, 2006 to 2016



	2006	2011	2016
Average household size	2.6	2.6	2.6
Average persons per bedroom	0.8	0.8	0.9
Proportion of households with children	42.7%	42.3%	41.4%
Proportion couple-only households	24.2%	24.6%	24.0%
Proportion lone person households	23.3%	23.5%	23.3%
Proportion group households	3.8%	4.1%	4.3%
Proportion of dwellings rented	23.9%	25.9%	27.5%
Proportion owned with mortgage	34.7%	33.0%	30.7%
Proportion owned outright	34.0%	34.5%	33.5%

