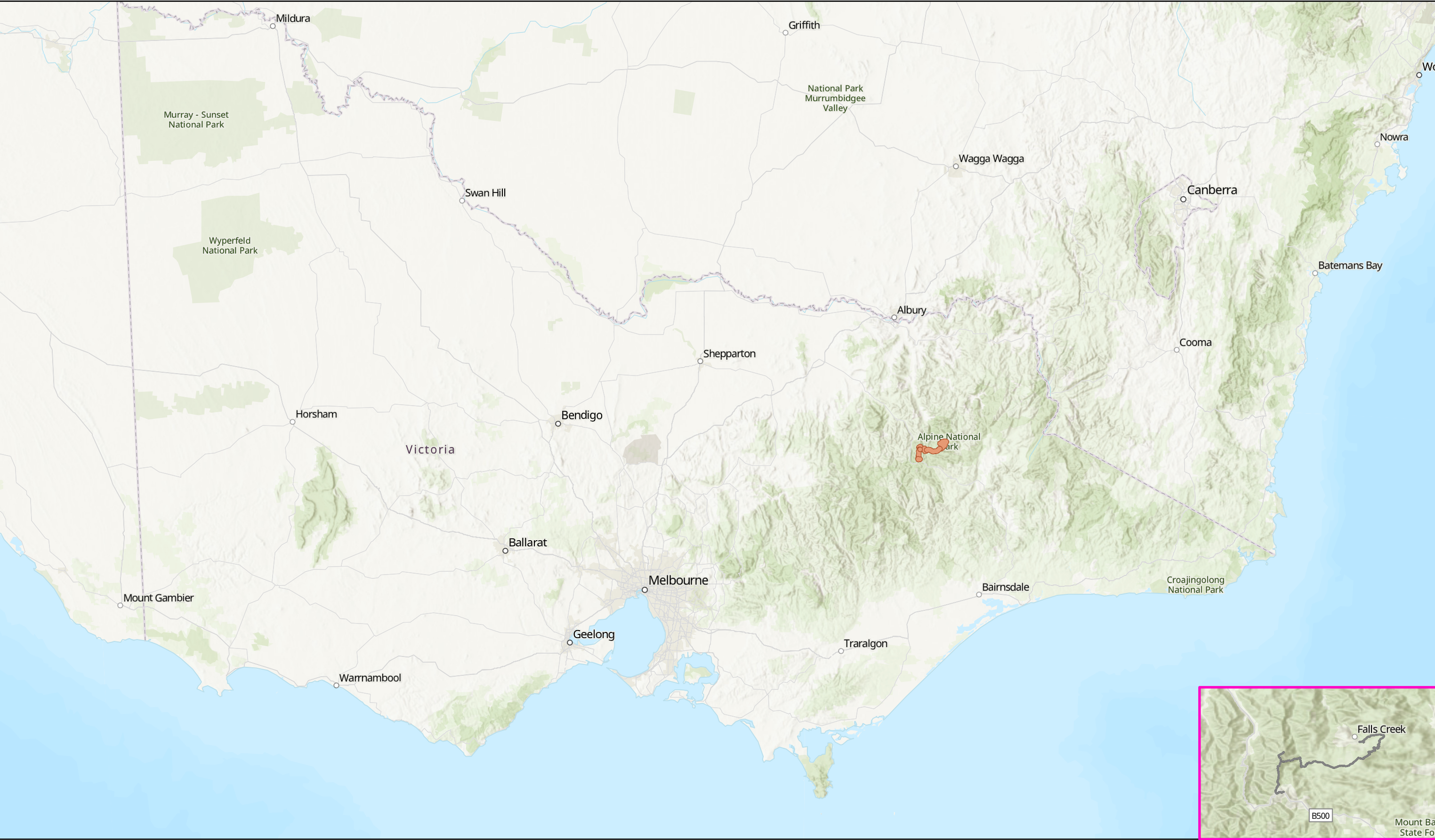


# Falls to Hotham Alpine Crossing - Location



## Legend

FHAC Trail - Final

FHAC Trail - Final

0 62.5 125 250 Km

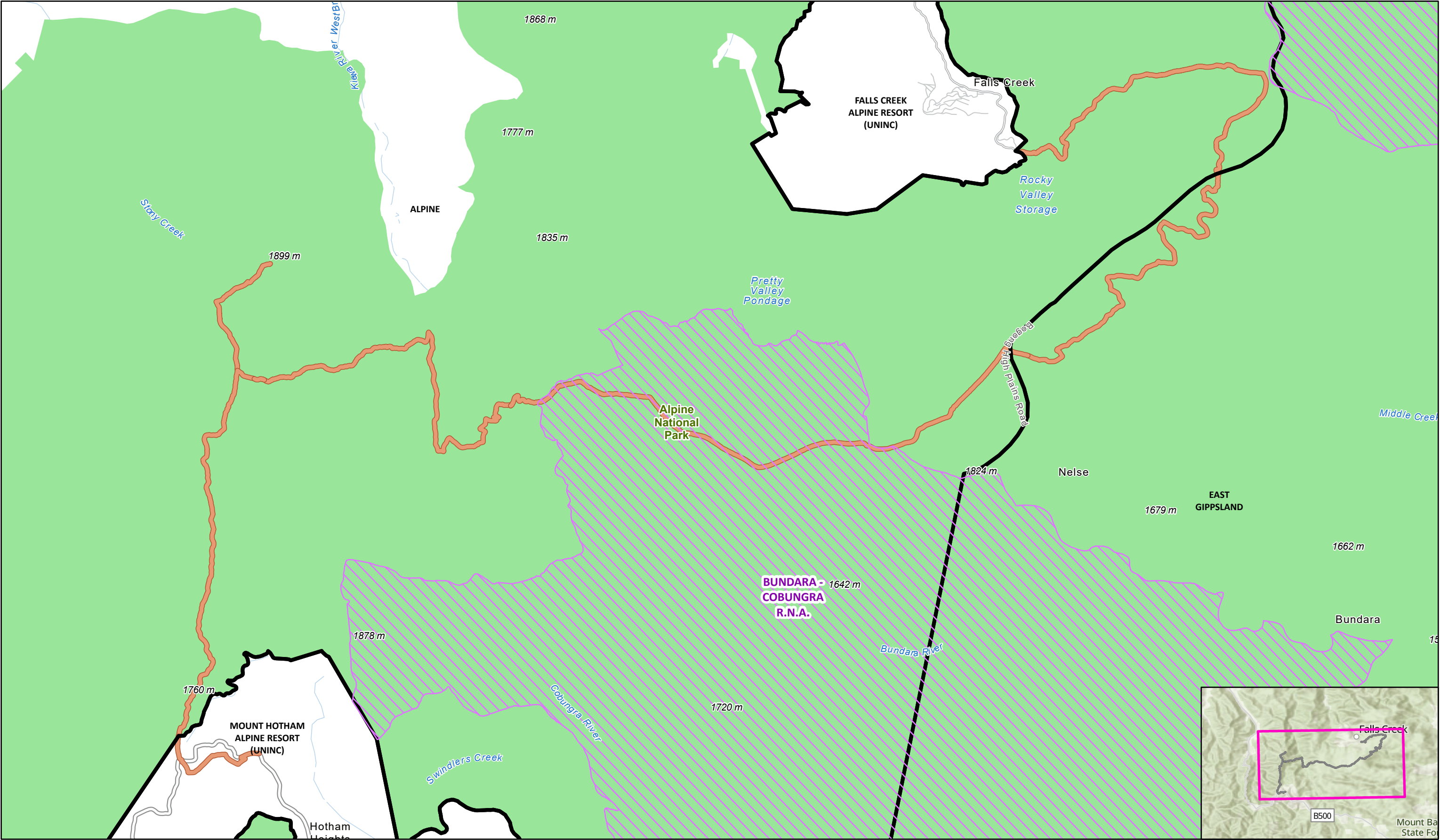


Map Created : 24/09/2025

Disclaimer: Parks Victoria does not guarantee that this data is without flaw of any kind and therefore disclaims all liability which may arise from you relying on this information.  
Data source acknowledgements: State Digital Mapbase. The State of Victoria and the Department of Environment, Energy and Climate Action.



# Falls to Hotham Alpine Crossing - Management Areas and Overlays



## Legend

### FHAC Trail - Final

FHAC Trail - Final

Local Government Area

### Parks and Reserves

National Parks

### Public Land

Remote and Natural Area

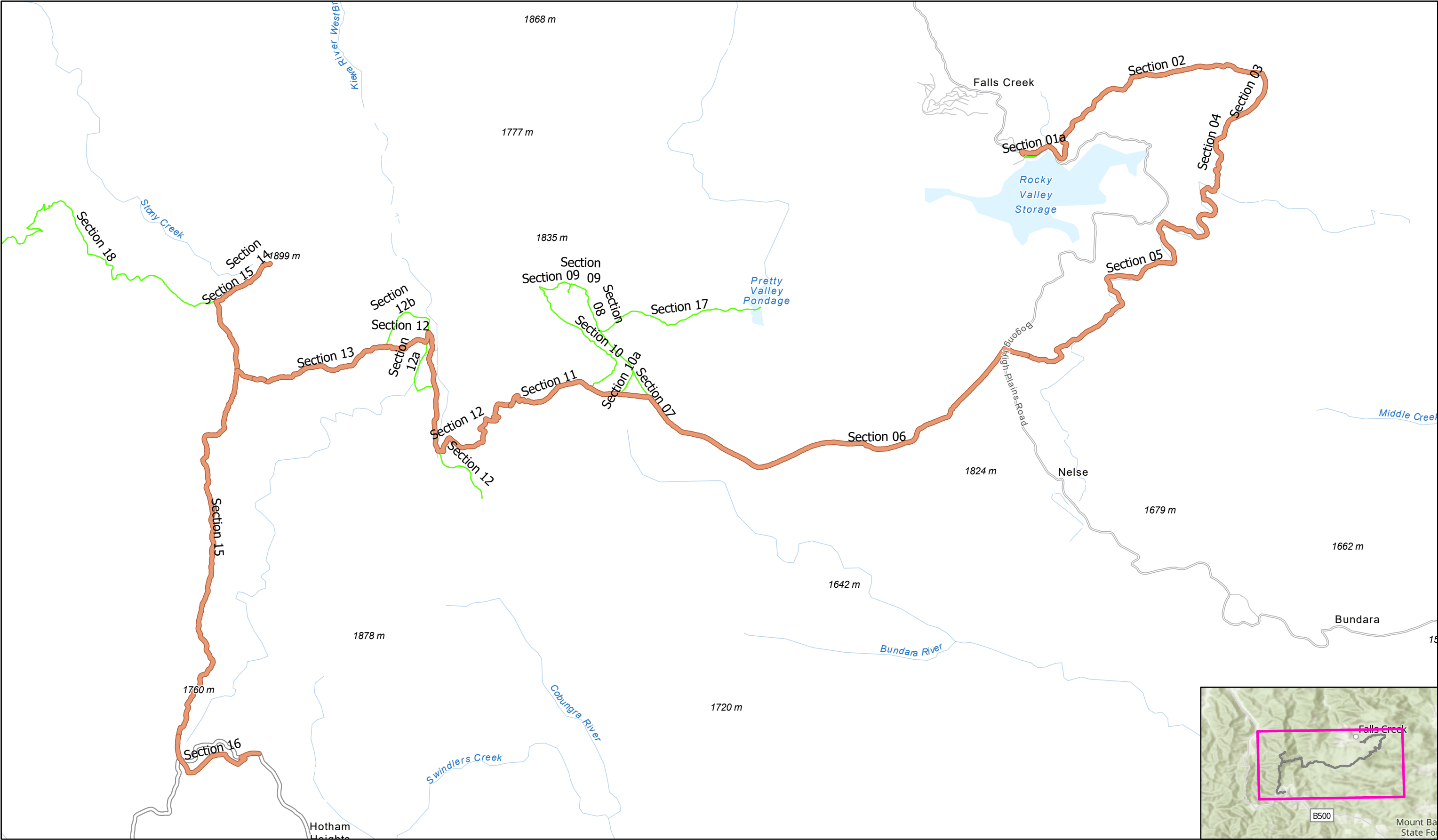
0 1.5 3 6 Km



Map Created : 25/09/2025

Disclaimer: Parks Victoria does not guarantee that this data is without flaw of any kind and therefore disclaims all liability which may arise from you relying on this information.  
Data source acknowledgements: State Digital Mapbase. The State of Victoria and the Department of Environment, Energy and Climate Action.

# Falls to Hotham Alpine Crossing - Trail Sections



## Legend

- FHAC Trail - Final**
- FHAC Trail - Final
  - Surveyed trails - Not in final scope

0 1.5 3 6 Km

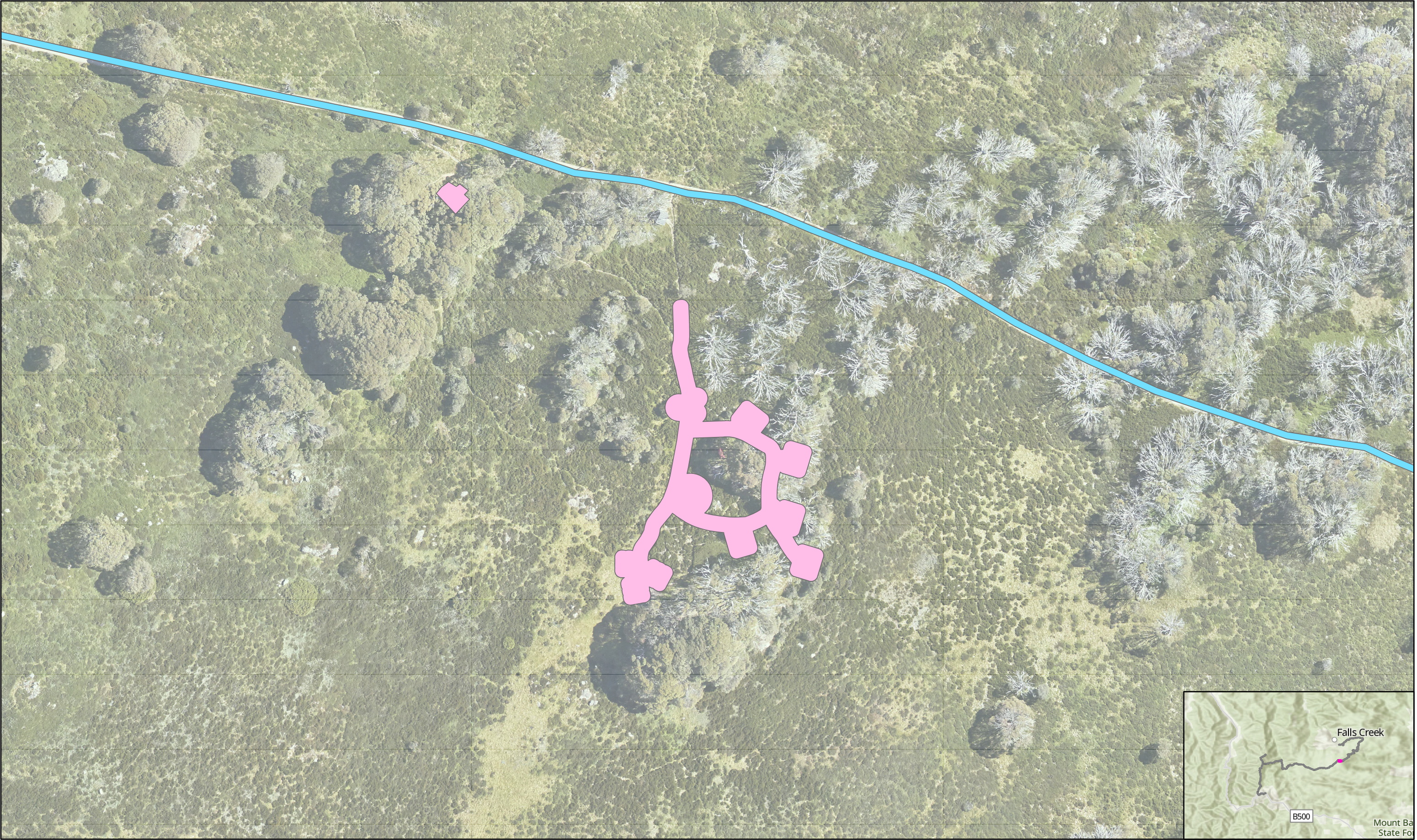


Map Created : 25/09/2025

Disclaimer: Parks Victoria does not guarantee that this data is without flaw of any kind and therefore disclaims all liability which may arise from you relying on this information.  
Data source acknowledgements: State Digital Mapbase. The State of Victoria and the Department of Environment, Energy and Climate Action.



# Falls to Hotham Alpine Crossing - Cope Hut Overnight



## Legend

### FHAC Trail - Final

— FHAC Trail - Final

### Type

— Avoidance Area

— Disturbance Area

0 0.02 0.04 0.09 Km



Map Created : 23/09/2025

Disclaimer: Parks Victoria does not guarantee that this data is without flaw of any kind and therefore disclaims all liability which may arise from you relying on this information.  
Data source acknowledgements: State Digital Mapbase. The State of Victoria and the Department of Environment, Energy and Climate Action.



# Falls to Hotham Alpine Crossing - Westons Hut Overnight



## Legend

### FHAC Trail - Final

— FHAC Trail - Final

### Type

— Avoidance Area

— Disturbance Area

0 0.02 0.04 0.09 Km

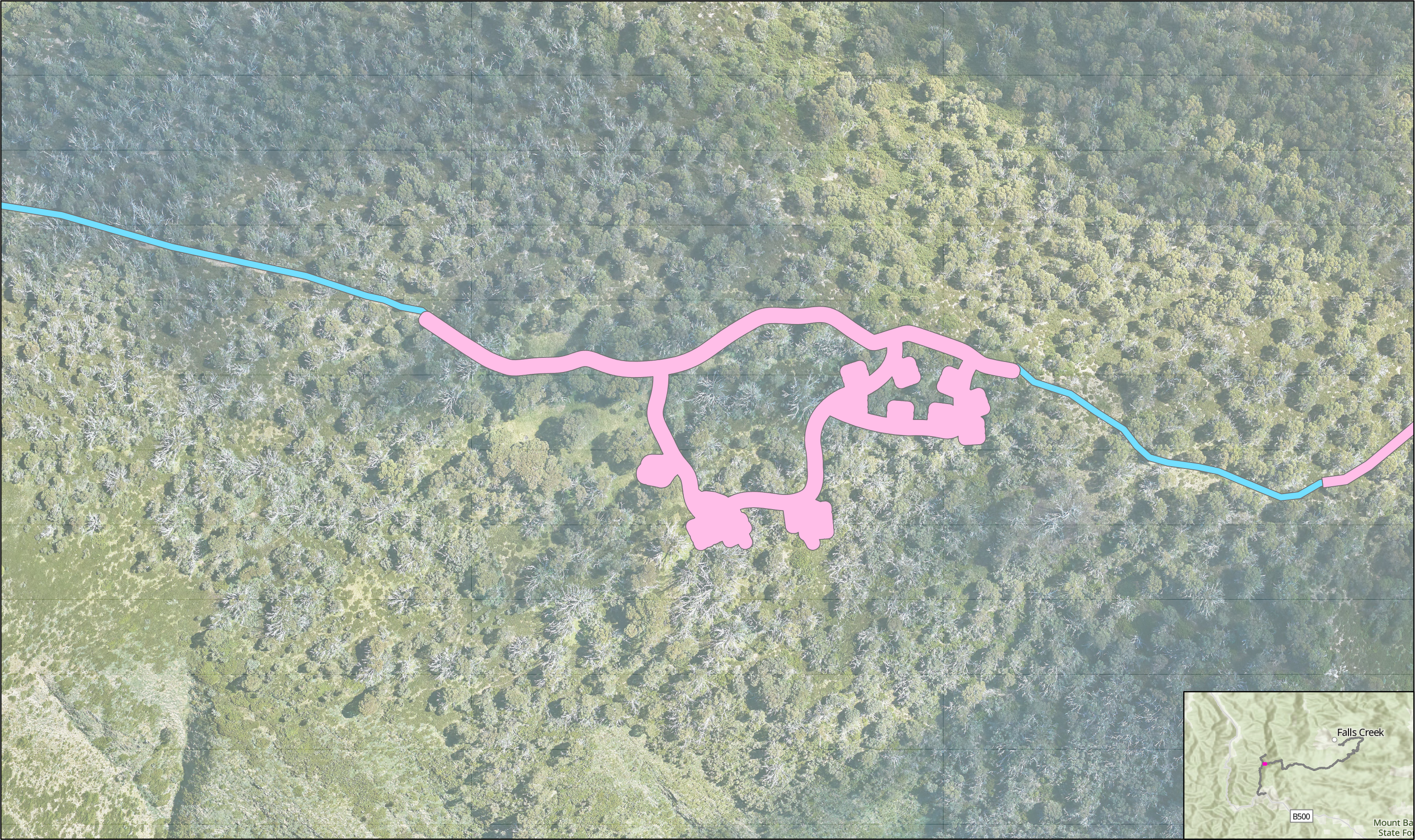


Map Created : 23/09/2025

Disclaimer: Parks Victoria does not guarantee that this data is without flaw of any kind and therefore disclaims all liability which may arise from you relying on this information.  
Data source acknowledgements: State Digital Mapbase. The State of Victoria and the Department of Environment, Energy and Climate Action.



# Falls to Hotham Alpine Crossing - High Knob Overnight



## Legend

### FHAC Trail - Final

— FHAC Trail - Final

### Type

— Avoidance Area

— Disturbance Area

0 0.02 0.04 0.09 Km



Map Created : 23/09/2025

Disclaimer: Parks Victoria does not guarantee that this data is without flaw of any kind and therefore disclaims all liability which may arise from you relying on this information.  
Data source acknowledgements: State Digital Mapbase. The State of Victoria and the Department of Environment, Energy and Climate Action.