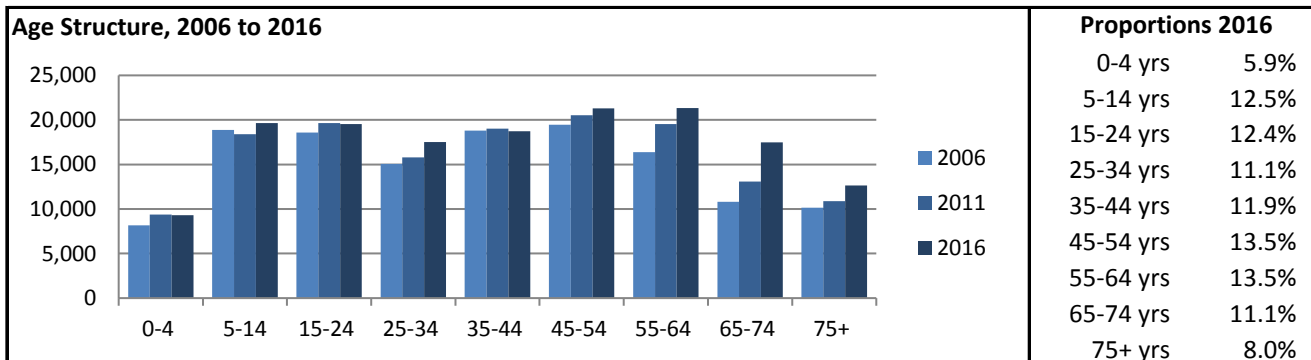
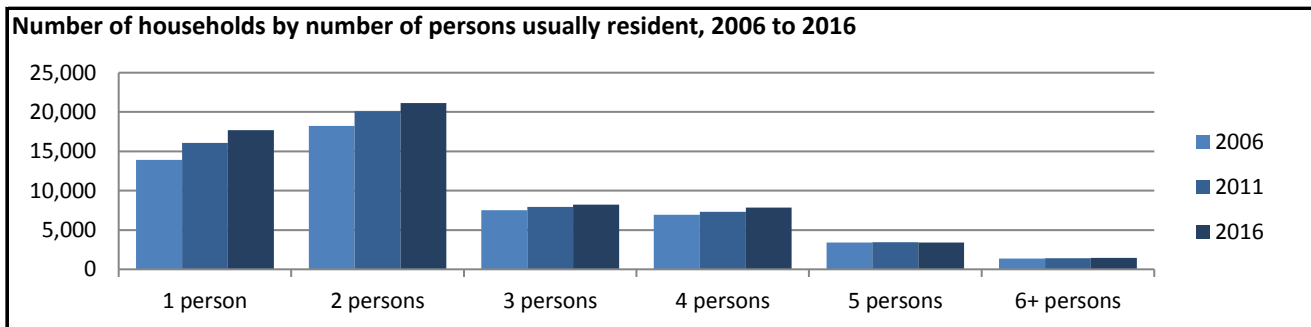


Ballarat (SA4)

| Count of persons by Usual Residence | Total 2006 | 136,264 | Period | 5-year change | Annual rate |
|--|------------|---------|---------|-----------------|-------------|
| | Total 2011 | 146,234 | 2006-11 | 9,970 increase | 1.4% p.a. |
| | Total 2016 | 157,485 | 2011-16 | 11,251 increase | 1.5% p.a. |



| | 2006 | 2011 | 2016 |
|--|-------|-------|-------|
| Median population age in years | 39 | 40 | 42 |
| Proportion indigenous persons | 0.9% | 1.1% | 1.4% |
| Proportion Australian citizens | 91.5% | 91.4% | 89.1% |
| Proportion born in Australia | 85.5% | 85.6% | 82.4% |
| Proportion born elsewhere | 8.6% | 9.4% | 9.9% |
| Proportion speaking English only at home | 92.6% | 92.1% | 88.5% |
| Proportion speaking other language at home | 3.0% | 3.7% | 4.6% |



| | 2006 | 2011 | 2016 |
|--|-------|-------|-------|
| Average household size | 2.5 | 2.4 | 2.4 |
| Average persons per bedroom | 0.8 | 0.8 | 0.8 |
| Proportion of households with children | 39.3% | 37.6% | 35.9% |
| Proportion couple-only households | 26.4% | 26.4% | 25.7% |
| Proportion lone person households | 26.1% | 27.5% | 27.8% |
| Proportion group households | 3.6% | 4.0% | 3.7% |
| Proportion of dwellings rented | 22.2% | 23.9% | 24.5% |
| Proportion owned with mortgage | 38.2% | 36.3% | 34.3% |
| Proportion owned outright | 33.1% | 33.6% | 32.5% |