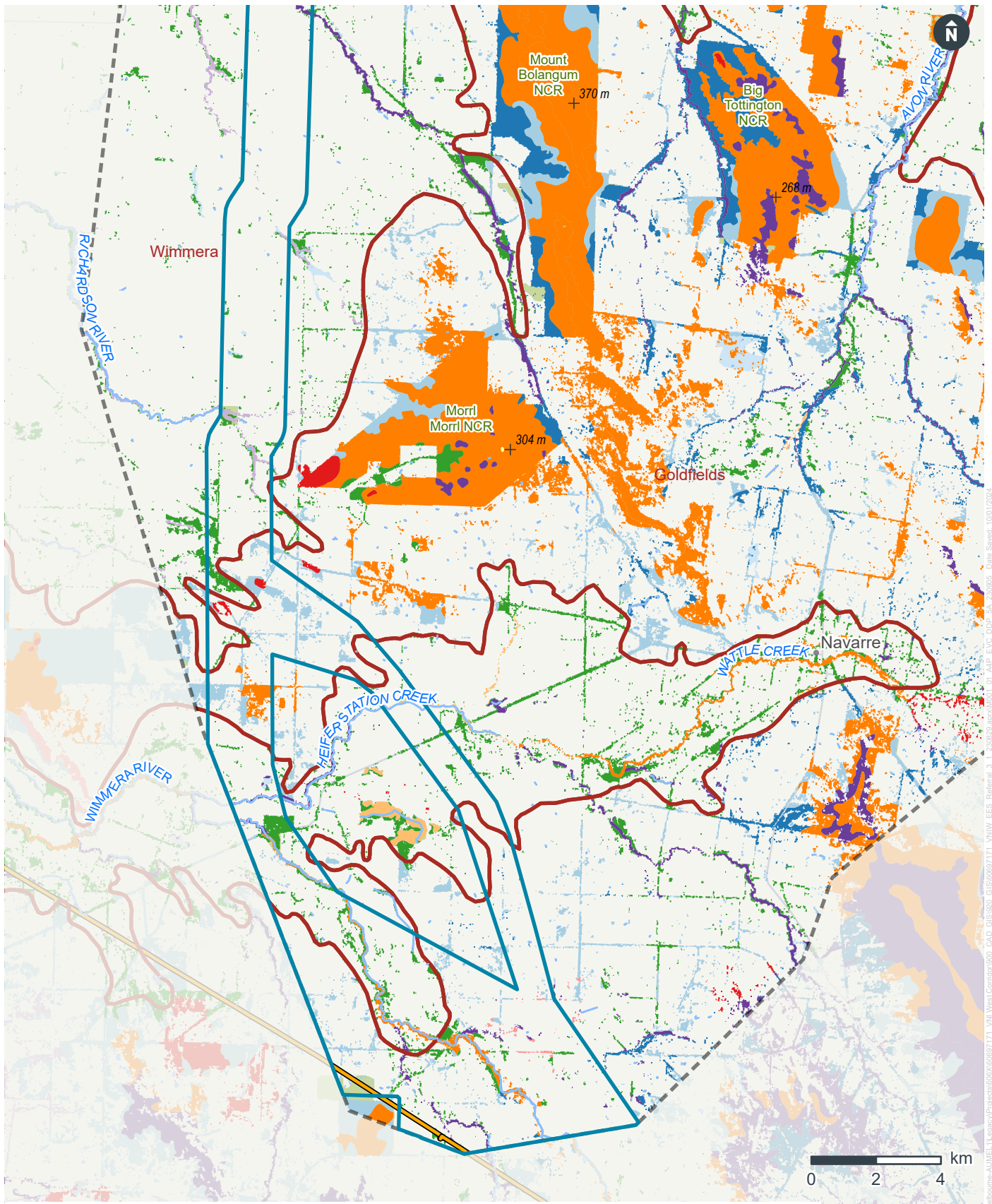


Figure 29 - 2005 Modelled Ecological Vegetation Classes (1/7)



LEGEND

- | | | | |
|---|---------------------------------|--|---|
| Draft Corridor | 175 Grassy Woodland | 640 Creekline Sedgy Woodland | 70 Hillcrest Herb-rich Woodland |
| 5A Area of Interest | 20 Heathy Dry Forest | 641 Riparian Woodland | 71 Hills Herb-rich Woodland |
| Power Transmission | 22 Grassy Dry Forest | 67 Alluvial Terraces Herb-rich Woodland | 74 Wetland Formation |
| Victorian Ecological Vegetation Classes | 23 Herb-rich Foothill Forest | 679 Drainage-line Woodland | 76 Grassy Woodland/ Alluvial Terraces Herb-rich Woodland Mosaic |
| 125 Plains Grassy Wetland | 292 Red Gum Swamp Woodland | 68 Creekline Grassy Woodland | 803 Plains Woodland |
| 132 Plains Grassland | 48 Heathy Woodland | 697 Grassy Woodland/ Alluvial Terraces Herb-rich Woodland Mosaic | 83 Swampy Riparian Woodland |
| 152 Alluvial Terraces Herb-rich Woodland/Plains Grassy Woodland Complex | 55 Plains Grassy Woodland | 61 Box Ironbark Forest | 982 No EVC assigned - need editing |
| | 56 Floodplain Riparian Woodland | | |

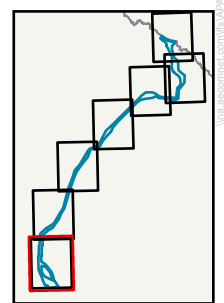
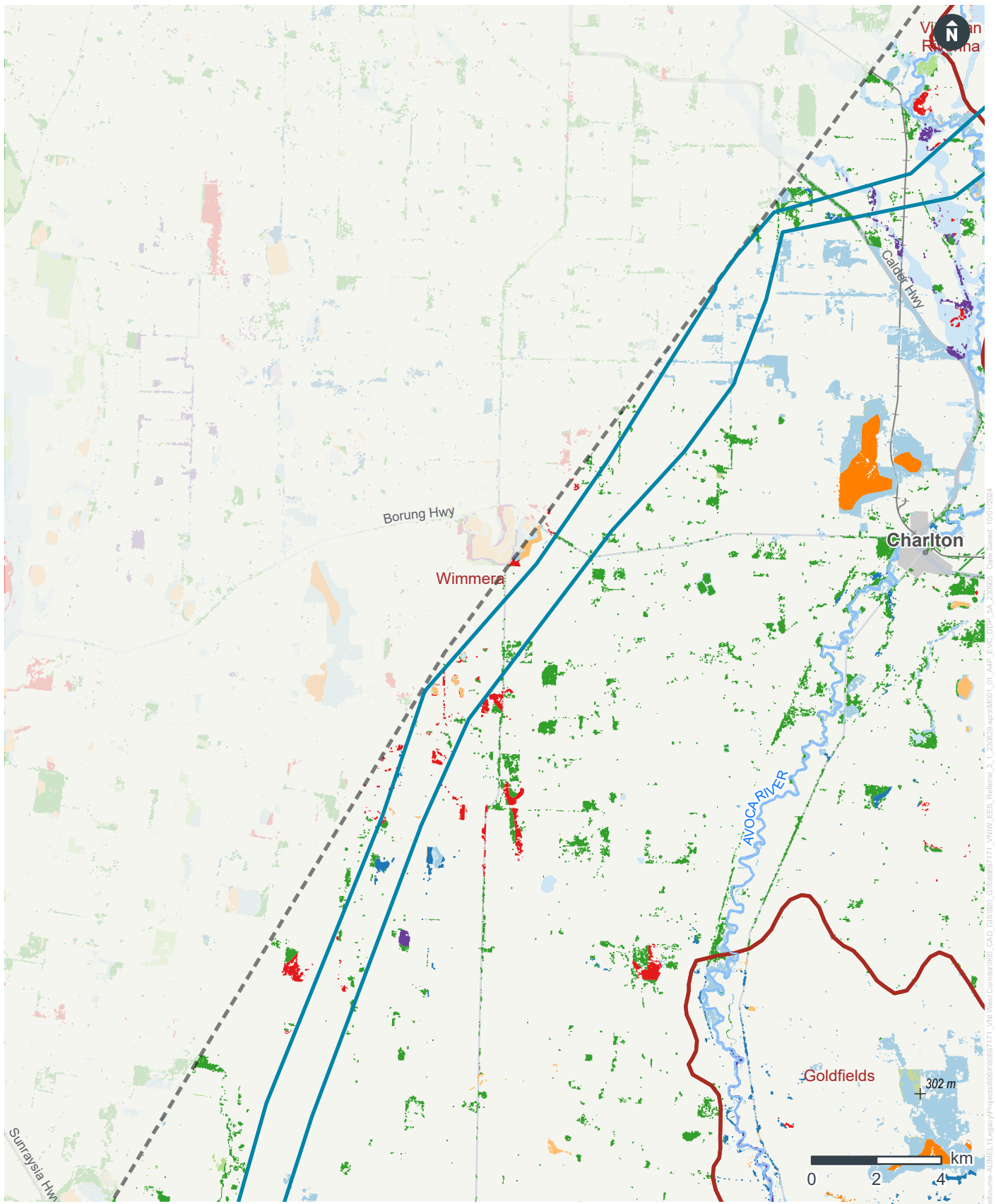


Figure 31 - 2005 Modelled Ecological Vegetation Classes (3/7)



LEGEND

- | | | | |
|---|--|--|--|
| Draft Corridor | 292 Red Gum Swamp | 694 Sandstone Ridge Shrubland/Low Rises Woodland Mosaic | 803 Plains Woodland |
| 5A Area of Interest | 321 Riverine Chenopod Woodland/Lignum Swamp Mosaic | 696 Grassy Woodland/Riverine Grassy Woodland Mosaic | 812 Grassy Riverine Forest/Riverine Swamp Forest Complex |
| Victorian Ecological Vegetation Classes | 56 Floodplain Riparian Woodland | 70 Hillcrest Herb-rich Woodland | 823 Lignum Swampy Woodland |
| 103 Riverine Chenopod Woodland | 66 Low Rises Woodland | 74 Wetland Formation | 826 Plains Savannah |
| 104 Lignum Swamp | 68 Creepline Grassy Woodland | 76 Grassy Woodland/Alluvial Terraces Herb-rich Woodland Mosaic | 829 Chenopod Grassland |
| 132 Plains Grassland | 69 Metamorphic Slopes Shrubby Woodland | | 96 Ridged Plains Mallee |
| 175 Grassy Woodland | | | 97 Semi-arid Woodland |
| 291 Cane Grass Wetland | | | |

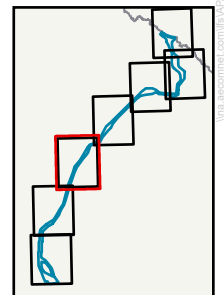
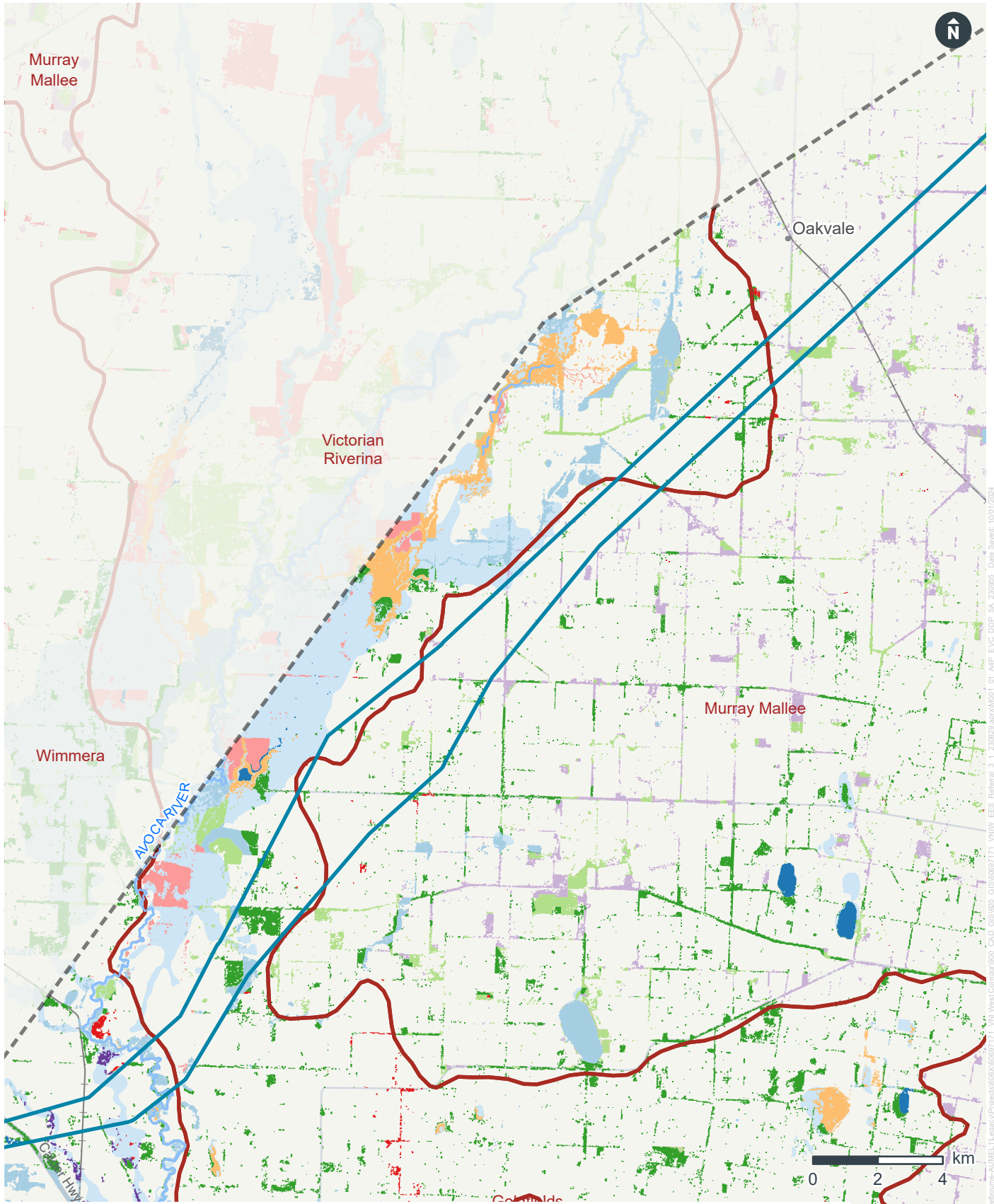


Figure 32 - 2005 Modelled Ecological Vegetation Classes (4/7)



LEGEND

- | | | | |
|---|---|--|--|
| Draft Corridor | 292 Red Gum Swamp | 74 Wetland Formation | 829 Chenopod Grassland |
| 5A Area of Interest | 295 Riverine Grassy Woodland | 803 Plains Woodland | 943 Lignum Swampy Woodland/Plains Grassland Mosaic |
| Victorian Ecological Vegetation Classes | 56 Floodplain Riparian Woodland | 812 Grassy Riverine Forest/Riverine Swamp Forest Complex | 946 Riverine Swampy Woodland/Lignum Swamp Mosaic |
| 103 Riverine Chenopod Woodland | 66 Low Rises Woodland | 823 Lignum Swampy Woodland | 96 Ridged Plains Mallee |
| 104 Lignum Swamp | 694 Sandstone Ridge Shrubland/Low Rises Woodland Mosaic | 824 Woorinen Mallee | 97 Semi-arid Woodland |
| 132 Plains Grassland | 175 Grassy Woodland | 826 Plains Savannah | |

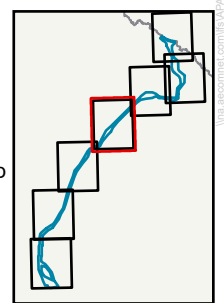
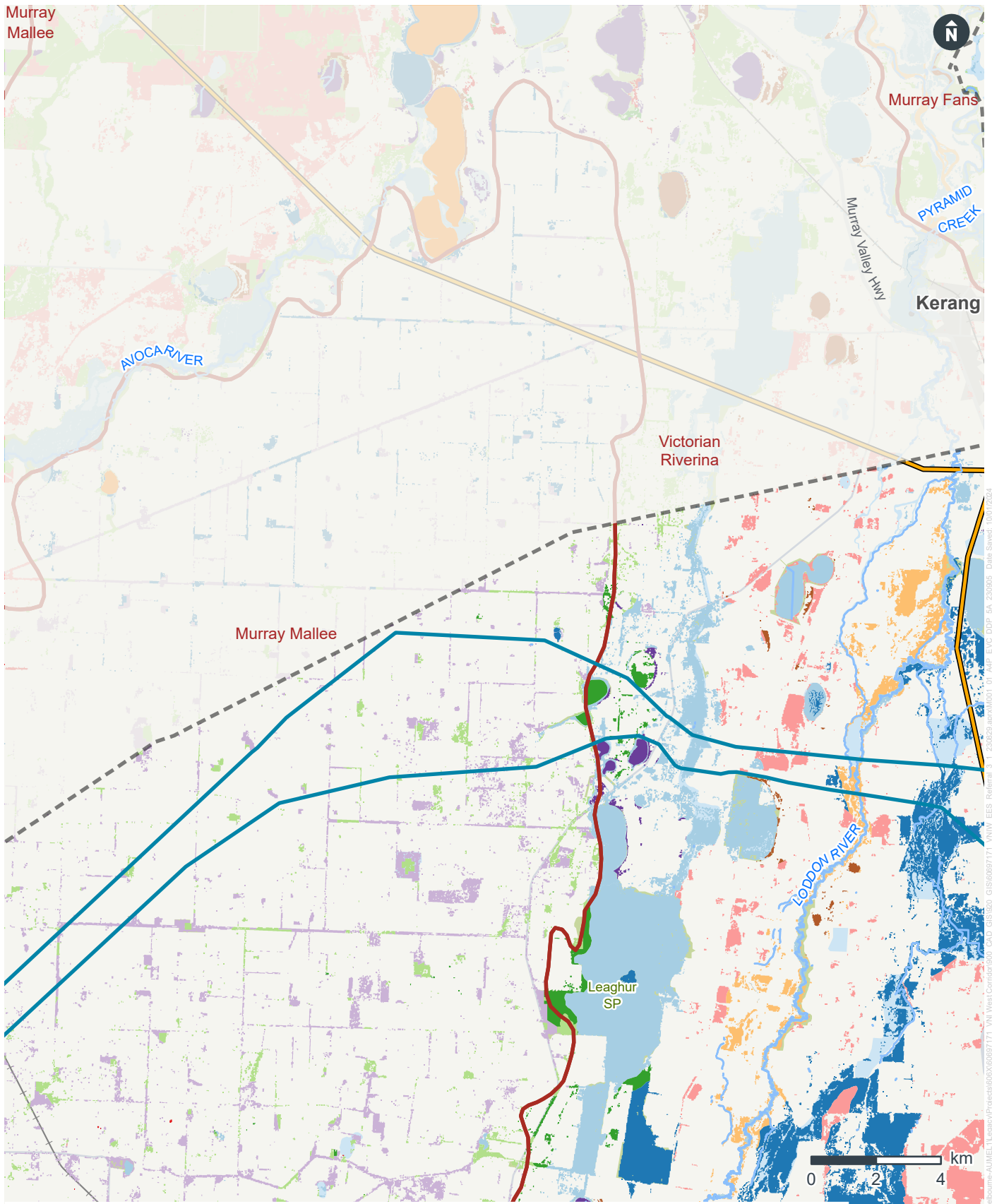


Figure 33 - 2005 Modelled Ecological Vegetation Classes (5/7)



LEGEND

- | | | | |
|--|---------------------------------|--|--|
| Draft Corridor | 158 Chenopod Mallee | 718 Freshwater Lake Aggregate | 829 Chenopod Grassland |
| 5A Area of Interest | 28 Rocky Outcrop Shrubland | 803 Plains Woodland | 942 Lignum Swampy Woodland/Lake Bed Herland Mosaic |
| Power Transmission | 292 Red Gum Swamp | 812 Grassy Riverine Forest/Riverine Swamp Forest Complex | 946 Riverine Swampy Woodland/Lignum Swamp Mosaic |
| Victorian Ecological Vegetation Classes | 295 Riverine Grassy Woodland | 813 Intermittent Swampy Woodland | 96 Ridged Plains Mallee |
| 101 Saphire Shrubland | 56 Floodplain Riparian Woodland | 823 Lignum Swampy Woodland | 97 Semi-arid Woodland |
| 103 Riverine Chenopod Woodland | 66 Low Rises Woodland | 824 Woorinen Mallee | 98 Semi-arid Chenopod Woodland |
| 104 Lignum Swamp | 717 Saline Lake Aggregate | 826 Plains Savannah | 992 Water Body - Fresh |
| 107 Lake Bed Herland | | | |
| 132 Plains Grassland | | | |

